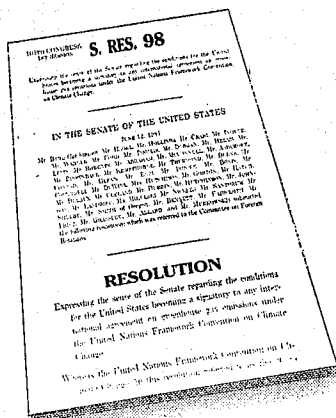


# Mr. President:

## Why Are More Than 60 U.S. Senators Concerned About The United Nations Climate Treaty?



Senators Byrd and Hagel introduced a Senate Resolution, now signed by more than 60 U.S. Senators, that any global climate proposal must apply to all countries of the world – not just America and a handful of others – and that we shouldn't sign any proposals that would result in serious harm to the U.S. economy.

The Resolution states that leaving developing countries like China, India, Mexico, and Brazil free from any restrictions

*"... is inconsistent with the need for global action on climate change and is environmentally flawed ..."*

and because of this disparity, the proposals *"... could result in serious harm to the United States economy, including significant job loss, trade disadvantages, increased energy and consumer costs..."*

The Resolution opposes signing any proposals that would limit greenhouse gas emissions for the U.S. unless

*"...the agreement also mandates new specific scheduled commitments to limit or reduce greenhouse gas emissions for Developing Country Parties within the same compliance period ..."*

We agree.

American Automobile Manufacturers Association  
 American Farm Bureau Federation  
 American Highway Users Alliance  
 American Iron and Steel Institute  
 American Petroleum Institute

American Road and Transportation Builders Association  
 Edison Electric Institute  
 National Grange  
 National Lumber and Building Material Dealers Association

National Mining Association  
 United Agribusiness League  
 United Mineworkers of America – AFL/CIO  
 The Association of American Railroads  
 The Fertilizer Institute

For information, write 1401 H St., N.W., Suite 900, Washington, DC 20005 (202) 326-5500

**HOMAGE TO MOTHER**

Schoolchildren line up outside St. Thomas's Catholic Church in Calcutta to file past the coffin of Mother Teresa, whose funeral is scheduled for Saturday.



BY JOHN MOORE—ASSOCIATED PRESS

**N. Korean Killed After Crossing Border**

By Mary Jordan  
Washington Post Foreign Service

TOKYO, Sept. 9—In the first deadly shooting in a year between the armies facing each other on the Korean Peninsula, South Korean soldiers today killed a North Korean soldier who had crossed the border, rifle in hand.

South Korean government officials said an unknown number of North Korean soldiers crossed the mountainous border, which is laced with land mines, and that the soldier had come within yards of a South Korean guard post.

The border between communist North Korea and capitalist South Korea is one of the world's most dangerous, and gunfire erupts there sporadically. North Korea sent mortar shells across the border in July, and Pyongyang said several of its soldiers were wounded in the ensuing exchange of fire. But not since a North Korean submarine ran aground off South Korea last September, leading to a manhunt and the killings of two dozen North Korean commandos and crewmen, have there been any fatalities.

"Our side fired about 10 rounds" today, killing the soldier, a Defense Ministry spokesman said in Seoul. It was not immediately known if the

body was returned or was kept in South Korea.

"A human life was lost and we always take that seriously," said Jim Coles, a spokesman for the U.S. forces in Korea. There are 37,000 U.S. troops stationed in Korea, and none of them was involved in the shooting.

The killing came on the same day as a breakthrough in diplomatic relations between North Korea and Japan. Red Cross officials from both countries signed an agreement in Beijing that for the first time will allow some Japanese women married to North Korean men to return home for short visits with their families. In return, North Korea, which is suffering from a devastating famine, hopes that Japan will resume food aid.

About 1,800 Japanese wives in North Korea have been barred from traveling outside the country, as all ordinary North Koreans are. The Japanese public and government have grown increasingly hostile toward North Korea over this issue. As a result, usually generous Japan has stopped giving food aid to its impoverished neighbor.

Today's agreement allows 10 to 15 women to visit Japan for one week in October. Because the agreement was so difficult to reach, some Japanese officials expressed doubt today

that the visits will actually take place. But Japanese officials said they have a written agreement on the issue and that North Korea said this would only be the first group of wives to be allowed home for a visit. As part of the deal, Japan will pay the women's travel expenses.

"This is a significant step. The Japanese have been after this for a long time," said a U.S. official closely watching the negotiations. "Now we will have to see what this means in terms of Japanese food aid."

North Korea marked the 49th anniversary of its founding today, and in celebration the official newspaper Rodong Shinmun praised de facto leader Kim Jong Il as "the ever victorious, iron-willed commander" who has turned North Korea into an "invincible country."

Kim has still not assumed the formal titles of state president and Communist Party chief that were held by his father, Kim Il Sung, who died three years ago, but U.S. officials believe the son is in control of the country.

Who is calling the shots in reclusive North Korea, and how firmly that leader is in charge, are key questions as the United States tries to facilitate four-nation talks aimed at securing a lasting peace on the Korean Peninsula.

**China's Party Expels Ex-Beijing Chief**

By Steven Mufson  
Washington Post Foreign Service

BEIJING, Sept. 9—China's ruling Communist Party has expelled from its ranks a disgraced former Beijing party chief and backed a major policy address by the president and party general secretary, Jiang Zemin, that sources say will endorse the large-scale privatization of state enterprises.

The moves were announced today at the end of a four-day closed-door session attended by 182 members and 123 alternate members of the party's Central Committee. The session was held to prepare for the important 15th party congress, which begins Friday.

The session's communique also said that the party's constitution has been amended, but it gave no details. Speculation focused on the possibility that the party has created a new post for Premier Li Peng, who must step down next March under the constitution's two-term limit.

Jiang's policy address, according to sources who have seen early drafts, will gloss over political reform and focus on efforts to reduce the cost of money-losing state-owned enterprises by turning them into companies with privately owned or employee-owned shares. The early drafts avoided the term "privatization," using instead the phrase "public ownership." That message has been already been floated recently in the government-run media.

Although the government has already been engaged in the reform of state enterprises, Jiang's speech may provide new impetus. The party leadership's backing for the address represents a major defeat for its Marxist ideologues, who have warned bitterly that the erosion of state control over the economy—a majority of which is already in private hands—would be fatal for the party's political power.

Today's communique gave few hints of the debates behind the scenes. "In an atmosphere of democracy and solidarity, the [Central Committee] had a warm discussion on a number of key issues concerning China's reform and opening-up," said the communique, issued by the official New China News Agency.

Jiang also appeared to have scored a victory with the expulsion from the party of Chen Xitong, a former Beijing Communist Party chief and mayor. The case involving Chen, a long-time rival and critic of Jiang, has been handed over to prosecutors who will press charges against him for alleged involvement in China's biggest corruption scandal since the 1949 Communist takeover. The scandal involved the obtaining of more than \$25 million through kickbacks for construction projects and the stealing of municipal funds for private use, including the alleged payment of costs for Cheng's mistress and favors for his son.

The Chinese Communist watchdog group, the Central Commission for Discipline Inspection, said today that Chen, 67, "seriously violated the party's discipline and caused extremely severe damage to the prestige of the party and state, thus completely discrediting himself as a Communist."

Although Chen was stripped of his position on the Politburo on April 29, 1995, his case has languished under investigation ever since. For many Chinese, the party's failure to expel Chen or put him on trial had become a symbol of its unwillingness to act vigorously against corruption. While many ordinary citizens face the death penalty for less serious offenses, Chen has been kept under house arrest in Inner Mongolia, an autonomous region of China, according to government sources.

A novel published earlier this year called "The Wrath of God: A Mayor's Severe Crime," bore an uncanny similarity to the Chen case. The novel recounts an anti-corruption campaign that gradually fades away because corruption is endemic to the system.

The party's discipline inspection group said, "It has been established that Chen, taking advantage of his position, had accepted and embezzled a large number of valuable items and had squandered large amounts of public funds to support a corrupt and decadent life."

The watchdog Central Commission for Discipline Inspection said

that Chen had also "abused his power to help his relatives and aides to run businesses and seek illicit interests, and seriously neglected his duty, being responsible to a grave extent for the law-breaking and criminal activities of Wang Bao-

sen, a former deputy mayor of Beijing."

Wang committed suicide in early 1995, drawing attention to the scandal. Chen's son was recently sentenced to a long jail term. Chen's mistress has fled the country.



**THE U.N. GLOBAL CLIMATE TREATY ISN'T GLOBAL**

**Americans Will Pay the Price**

The United Nations is negotiating a climate treaty that will require severe restrictions on the amount of energy we use. And it puts the entire burden on the U.S. and a few other countries.

CHECK IT OUT FOR YOURSELF: 1-888-54FACTS or [www.climatefacts.org](http://www.climatefacts.org)



**50 Cents More for Every Gallon of Gasoline**

Economists predict that reducing our energy use by more than 20% will require price increases for most types of energy. Natural gas could go up 45%, electricity costs could increase by 20%, and gasoline prices could go up by 50 cents a gallon.

**Most Countries Are Exempt**

Americans will pay more for everything that requires energy to transport or manufacture, while 132 of 166 countries, including India, China and Mexico, are exempt.

**It's Not Global and It Won't Work.**

Paid for by: Air Transport Association of America, American Automobile Manufacturers Association, American Corn Growers Association, American Farm Bureau Federation, American International Automobile Dealers Association, American Plastics Council, American Portland Cement Alliance, American Trucking Association, Association of American Railroads, Center for Energy and Economic Development, Coalition for Vehicle Choice, The Fertilizer Institute, National Association of Farmer Elected Committees, National Association of Manufacturers, National Automobile Dealers Association, National Black Chamber of Commerce, Inc., National Cattlemen's Beef Association, National Grange, National Mining Association, National Rural Electric Cooperative Association, The Seniors Coalition, The Small Business Survival Committee

# At 25th Reunion, VMI Pioneers Recall How, With Little Fanfare, School Was Integrated

VMI, From B1

In 1967, then-Superintendent George R.E. Shell announced that VMI would accept black applicants. The U.S. Department of Health, Education and Welfare had threatened the state with a loss of federal funds if its colleges did not integrate, and one by one through the 1960s, they did.

Frank Easterly, First Class president of VMI's Class of 1969, held a series of meetings with groups of students to stress that the tough initiation of freshmen, known as the Rat Line, would continue without favor or discrimination—a tiny forerunner of the mass meetings held this year to prepare students and staff for the arrival of women.

"There was a minority, a small minority, who had a strong negative reaction, and they were rather strident and not very tactful in the way they expressed their opinion," said Easterly, now a Richmond businessman. "But there were no incidents, if that's the word. It became pretty clear early on that it wasn't going to be a problem."

Valentine, who now lives in Jacksonville, Fla., and runs a consulting business, says integration at VMI, for the most part, "turned out to be a non-event."

"In the Rat Line, everyone was treated [harshly], and you don't think it's racially motivated because the white guy next to you is getting it too," said Valentine, who grew up in Newport News, Va., and spent most of his career after VMI as an engineer at AT&T Corp.

But beyond the leveling rigors of the Rat Line, VMI was also an institution adorned with troubling symbols for a black cadet, as well for as some of its white students.

At a ceremony held in New Market, Va., each May to commemorate the valor of VMI men in a Civil War battle, the Confederate flag was flown, and cadets were expected to salute it. The regimental band played "Dixie."

Confederate flags and the playing of "Dixie" also were common at sporting events. And cadets were obliged to salute as they passed Lee Chapel on the campus of neighboring Washington and Lee University, where Robert E. Lee, the Confederate general, is buried.

Gore and Valentine balked at those traditions. Gore, who later spent 24 years in the Air Force and retired at the rank of lieutenant colonel, was then a drummer in the regimental band. When it came time to play "Dixie," he simply stopped drumming—every time.

For all four years they were at VMI, Gore and Valentine refused to salute the Confederate flag. In fact, Valentine, as a First Class lieutenant, remembers giving the order to salute to his company and then not saluting himself. When they could, they took guard duty to avoid ceremonies replete with Confederate symbols. And they always avoided Lee Chapel so they would not have to salute.

"I had never in my life saluted a Confederate flag, and I was never going to," said Valentine, adding that the school chose to ignore their civil disobedience.

Wilkerson, on the other hand, said he swallowed his resentments for the sake of military cohesion. By his senior year, he was a captain and company commander.

"In a ceremony, if the order was to salute, I saluted," said Wilkerson, now an Army colonel who is moving to the Washington area from Fort Rucker, Ala., because of a transfer to the Pentagon. "Did I like it? No. But there were more pros than cons at VMI, many more. . . . VMI, in many ways, shaped the person I became."

After 1968, as increasing numbers of black students enrolled, addressing the issue of Confederate symbols became more and more pressing. A growing number of black cadets tired of the administration's nod-and-a-wink approach to their protests, and in 1973 they threatened to go AWOL for the New Market ceremony. The entire student body, in response, voted narrowly to eliminate the playing of "Dixie" and the display of the Confederate flag.

The VMI Board of Visitors then voted to change nothing in the ceremony. But the school nonetheless dropped "Dixie" and found ways to make it easier for black cadets to avoid saluting the Confederate flag. In 1974, for instance, the New Market ceremony was held after graduation when only a voluntary corps remained on post.

By the late 1970s, VMI had quietly and completely abandoned the Confederate flag. The New Market ceremony endures, and the tradition of saluting at Lee Chapel continues on a voluntary basis. Of the 460 freshmen who enrolled this fall, 34 were African Americans.

The other two black cadets to integrate VMI in 1968 were Larry Foster, who died in a drowning accident in the summer after his freshman year, and Adam Lawrence Randolph, who dropped out in 1970 and could not be reached last week for comment.

Gore, Wilkerson and Valentine all confess to having had qualms about whether women would disrupt VMI's core traditions, which had seemed so bound up with the school's all-male character.

"I wasn't flat opposed to women going, but VMI has a system that works and nothing about the system changes when black men are intro-

duced," Valentine said. "VMI can adapt. It's adapted before. I was just hoping that the arrival of women wouldn't change the fundamental things, like the Rat Line."

The three look back on their year in the Rat Line with the glory-days fondness of all its survivors. All three have stayed in touch over the years, although today was only the second time since 1972 that they have been together on post. Wilkerson, who grew up in Hampton, Va., and is the first black VMI graduate to make colonel in the Army, held his promotion ceremony at VMI two years ago to demonstrate his affection for the institute.

"VMI was an incredible bonding experience, and not just for the three of us," said Gore, also from Hampton, who now lives in O'Fallon, Ill., and works for a defense contractor. "My roommate, Tom Hathaway, became like my second brother, and we're still very close."

And today was a day for laughter, bearhugs and old stories. Hathaway recalled how he once suggested to Gore that they sneak across the parade ground, a privilege reserved for upperclassmen. "It was getting dark, and I said to Harry, 'They'll never be able to tell we're rats,'" Hathaway said. "And Harry looks at

me with this look on his face, and he says, 'Fool, there ain't no [blacks] in the upper classes,'" Hathaway said as Gore roared with laughter.

The black cadets were in different companies at VMI and never roomed together, but they still had a sense of brotherhood beyond the ties that all freshmen form. Wilkerson remembers how with a glance across the courtyard they would steel each other as they endured the humiliations of the Rat Line. And on weekends, in a welcome respite from the din of barracks, they attended one of the two black churches in town.

"There was a lot of curiosity about us in the town, and in the black community, there was a lot of pride at finally seeing our faces in those uniforms," Valentine said.

Today, as they toured the barracks, the three marveled at a new set of pioneers.

"They look like rats," said Valentine, after spotting some female cadets. "And that's good."

Added Wilkerson: "There are two words on our class ring: 'Tradition' and 'Change.' That says it all. VMI changed for the better when it accepted African Americans. And I believe it is going to change again, and I believe for the better."



Philip Wilkerson, with daughter Lois, talks to Richard Valentine and Harry Gore, right. They were among the first blacks at VMI. BY STEPHANIE GROSS FOR THE WASHINGTON POST



## THE U.N. GLOBAL CLIMATE TREATY ISN'T GLOBAL

### Americans Will Pay the Price

The United Nations is negotiating a climate treaty that will require severe restrictions on the amount of energy we use. And it puts the entire burden on the U.S. and a few other countries.

### 50 Cents More for Every Gallon of Gasoline

Economists predict that reducing our energy use by more than 20% will require price increases for most types of energy. Natural gas could go up 45%, electricity costs could increase by 20%, and gasoline prices could go up by 50 cents a gallon.

### Most Countries Are Exempt

Americans will pay more for everything that requires energy to transport or manufacture, while 132 of 166 countries, including India, China and Mexico, are exempt.

**It's Not Global and It Won't Work.**

CHECK IT OUT FOR YOURSELF: 1-888-54FACTS or [www.climatefacts.org](http://www.climatefacts.org)

Paul for by A. Philip Randolph Institute, American Automobile Manufacturers Association, American Corn Growers Association, American Farm Bureau Federation, American International Automobile Dealers Association, American Petroleum Institute, American Plastics Council, American Portland Cement Alliance, American Trucking Associations, American Sheep Industry Association, Association of American Railroads, Center for Energy and Economic Development, Chemical Manufacturers Association, Coalition for Vehicle Choice, The Fertilizer Institute, Global Climate Coalition, National Association of Farmer Elected Committees, National Association of Manufacturers, National Automobile Dealers Association, National Black Chamber of Commerce, Inc., National Cattlemen's Beef Association, National Farmers Union, National Grange, National Mining Association, National Rural Electric Cooperative Association, The Seniors Coalition, The Small Business Survival Committee, United Brotherhood of Carpenters, AFL-CIO, United Mine Workers of America, AFL-CIO, United States Hispanic Chamber of Commerce, United Transportation Union, AFL-CIO.

# 95 U.S. SENATORS AND MORE IN ALL 50 STATES

**Alabama**  
Alabama AFL-CIO  
Alabama Coal Association  
Alabama Coalition for Vehicle Choice  
Alabama Farm Bureau Federation  
Alabama Forestry Association  
Alabama Industry & Manufacturers Association  
Alabama Petroleum Council  
Alabama Traffic Safety Center  
Automobile Dealers Association of Alabama  
Business Council of Alabama  
Diamond Company Inc.  
GM Athens Delphi Saginaw Steering  
GM Tuscaloosa Delphi Packard Electric  
Gulf States Steel  
Joe Wheeler Electric Membership Cooperative  
North Shelby Chamber of Commerce  
Tombigbee Electric Cooperative, Inc.  
Tuscaloosa Steel Corporation  
United Mine Workers, District 20

**Alaska**  
AK Steel Corporation  
Alaska Boating Association  
Alaska Coalition for Vehicle Choice  
Alaska Farm Bureau  
Alaska Forest Association  
Alaska Highway Users Federation  
Alaska Manufactured Housing Association  
Alaska Miners Association  
Alaska Rural Electric Cooperative Association  
Alaska State Chamber of Commerce  
Alaska State Chapter, National Motorists Association  
Alaska State Grange  
Alaska Trucking Association  
Alaskans for Tax Reform  
Anchorage Chamber of Commerce  
Arctic Power  
Associated General Contractors, Alaska Chapter  
Concerned Alaska Citizens  
Federated Women in Timber  
Haknek Electric Association  
Northern Knowledge  
Resource Development Council for Alaska, Inc.  
The Alaska Support Industry Alliance  
United Four Wheel Drive Association  
Women's Mining Coalition  
Yakutat Power, Inc.

**Arizona**  
Agri-Business Council of Arizona  
AMIGOS  
Arizona Automobile Dealers Association  
Arizona Automobile Trade Organization  
Arizona Builders Alliance  
Arizona Cattle Growers Association  
Arizona Chamber of Commerce  
Arizona Coalition for Vehicle Choice  
Arizona Electric Power Cooperative, Inc.  
Arizona Farm Bureau Federation  
Arizona Mining Association  
Arizona Motor Transport Association  
Arizona Pork Producers  
Arizona State AFL-CIO  
Arizona State Chapter, National Motorists Association  
Arizona Wholesale Beer & Liquor Association  
Associated Builders & Contractors  
Associated General Contractors - Building Chapter  
BHP (USA) Inc.  
GM Mesa Proving Ground  
Navapache Electric Co-op, Inc.  
South West Strategies  
Tohono O'odham Utility Authority  
Women's Mining Coalition

**Arkansas**  
Arkansas AFL-CIO  
Arkansas Automobile Dealers Association  
Arkansas Automotive Aftermarket Association  
Arkansas Coalition for Vehicle Choice  
Arkansas Electric Cooperative Corporation  
Arkansas Environmental Federation  
Arkansas Farm Bureau Federation  
Arkansas Farmers Union  
Arkansas Highway Users Conference  
Arkansas Nurserymen's Association  
Arkansas Petroleum Council  
Arkansas Railroad Association  
Arkansas State Chamber of Commerce  
Arkansas Valley Electric Cooperative Corporation  
Ashley-Chicot Electric Cooperative, Inc.  
Associated Builders & Contractors of Arkansas  
Associated Industries of Arkansas  
C. L. Electric Cooperative Corporation  
Carder Buick-Olds-Mazda, Inc.  
Carroll Electric Cooperative Corporation  
Clay County Electric Cooperative Corporation  
Craighead Electric Cooperative Corporation  
HomeCraft Builders of Arkansas  
Mechanical Contractors Association of Arkansas, Inc.  
New Directions of Arkansas  
North Arkansas Electric Cooperative, Inc.  
Ouachita Electric Cooperative Corporation  
Ozark Electric Cooperative Corporation  
Pettit Jean Electric Cooperative Corporation  
Rich Mountain Electric Co-op  
River View Paradise Resort  
South Central Arkansas Electric Co-op  
Southwest Arkansas Electric Cooperative Corporation  
Woodruff Electric Cooperative Corporation

**California**  
BHP (USA) Inc.  
California Association of Nurserymen  
California Chamber of Commerce  
California Coalition for Vehicle Choice  
California Farm Bureau Federation  
California Manufacturers Association  
California Motor Car Dealers Association  
California Motorcycle Dealers Association  
California Service Station & Automotive Repair Association  
California State Grange  
California Steel Industries, Inc.  
California Travel Parks Association  
California Women in Timber  
Federated Women in Timber  
Fresno Co-op Raisin Growers  
GM Anaheim Delphi Energy and Engine  
GM Brea Delphi Interior & Lighting  
GM Hughes Electronics  
Imperial Valley Vegetable Growers Association  
Kampgrounds Enterprises  
Kings County Pomona Grange #28  
Olive Growers Council  
Painting and Decorating Contractors of California  
Sacramento Builders' Exchange  
San Diego County Farm Bureau  
Southland Motor Car Dealers Association's Superior Industries Intl. Inc.  
The Seniors Coalition  
Tulare County Cattlemen's Association  
United Agribusiness League  
United Four Wheel Drive Association  
West Coast United Egg Producers  
Women's Mining Coalition

**Colorado**  
ARCO Coal Company  
Associated General Contractors of Colorado  
Colorado  
Colorado AFL-CIO  
Colorado Association of Commerce & Industry  
Colorado Association of Wheat Growers  
Colorado Auto Dealers Association  
Colorado Coalition for Vehicle Choice  
Colorado Contractors Association  
Colorado Farm Bureau  
Colorado Highway Users Conference  
Colorado Independent Auto Dealers Association  
Colorado Land Improvement Contractors Association  
Colorado Marine Dealers Association  
Colorado Mining Association  
Colorado Motor Carriers Association  
Colorado Motorcycle Dealers Association  
Colorado Recreational Vehicle Dealers Association  
Colorado Rural Electric Association  
Colorado Snowmobile Association  
Colorado State Grange  
Colorado Timber Industry Association  
Colorado Trappers Association  
GM Denver Service Parts Operations  
Highline Electric Association  
Mountain Parks Electric, Inc.  
Poudre Valley Rural Electric Association  
Rocky Mountain Oil & Gas Association  
San Isabel Electric  
San Luis Valley Rural Electric  
San Miguel Power Association, Inc.  
Sangre De Cristo Electric Association, Inc.  
Southeast Colorado Power  
The Pittsburg & Midway Coal Mining Co.  
The Seniors Coalition  
Trapper Mining, Inc.  
Tri-State Generation & Transmission Association  
United Four Wheel Drive Association  
Women's Mining Coalition

**Connecticut**  
Associated General Contractors of Connecticut  
Connecticut Automotive Trades Association, Inc.  
Connecticut Construction Industries Association  
Connecticut Farm Bureau Association, Inc.  
Connecticut Ready Mixed Concrete Association  
Connecticut Road Builders Association  
Connecticut Small Business Federation  
Connecticut State Grange  
GM Commerce Electric-Motive  
The Seniors Coalition  
Utility Contractors Association of Connecticut

**Delaware**  
Delaware Asphalt Pavement Association  
Delaware Building & Construction Trades  
Delaware Contractors Association  
Delaware Farm Bureau  
Delaware Manufacturers Association  
Delaware Motor Transport Association  
Delaware Petroleum Council  
Delaware Retail Council  
Delaware State Chamber of Commerce  
Delaware State Grange  
Delaware Utility and Transportation Contractors Association  
GM Wilmington Assembly Plant  
Homebuilders Association of Delaware  
The Seniors Coalition  
Union Park Inc.  
United Four Wheel Drive Association

**District of Columbia**  
American Automobile Manufacturers Association  
American Coalition for Traffic Safety  
American Farm Bureau Federation  
American Frozen Food Institute  
American Highway Users Alliance  
American Meat Institute  
American Petroleum Institute  
American Road & Transportation Builders Association  
Association of American Railroads  
Citizens for a Sound Economy  
Coalition for Vehicle Choice  
Coalitions for America  
Consumers Energy  
CSX Corporation  
Edison Electric Institute  
ENTERGY  
Farmers Against the Climate Treaty  
LTV Steel Company  
National Association of Manufacturers  
National Association of Plumbers, Heating & Cooling Contractors  
National Association of Wheat Growers  
National Food Processors Association  
National Grange  
National Mining Association  
National Steel  
Polomac Electric Power Company  
Small Business Survival Committee  
The American Legislative Exchange Council  
The Fertilizer Institute  
United Mine Workers/BCOA Labor Management Positive Change Process  
United States Chamber of Commerce  
USX Corporation  
Washington Area New Automobile Dealers Association  
Washington Service Station and Automotive Repair Association

**Florida**  
Associated Industries of Florida  
Citizens for Constitutional Property Rights, Inc.  
CSX Transportation  
Electric Fuels Corporation  
Florida Association of Plumbing, Heating & Cooling Contractors  
Florida Automobile Dealers Association  
Florida Citrus Mutual  
Florida Citrus Processors Association  
Florida Coalition for Vehicle Choice  
Florida Concrete & Products Association  
Florida Electric Cooperatives Association  
Florida Electrical Workers Association  
Florida Farm Bureau Federation  
Florida Fire Equipment Dealers Association  
Florida Forestry Association  
Florida Fruit & Vegetable Association  
Florida Petroleum Council  
Florida Poultry Federation, Inc.  
Florida Power Corporation  
Florida Professional Firefighters  
Florida RV Trade Association  
Florida Transportation Builders Association  
GM Jacksonville Electro-Motive  
GM Jacksonville Service Parts Operations

Marine Industries Association of South Florida  
Peace River Electric Cooperative, Inc.  
Saint Petersburg Automobile Dealers Association  
Seminole Electric Cooperative, Inc.  
Talquin Electric Cooperative, Inc.  
TECO Energy, Inc.  
The Seniors Coalition  
West Florida Electric Cooperative Association, Inc.

**Georgia**  
Adams Container Corporation  
Apple Country Auto Club  
Atlantic Engineered Products Inc.  
Atlantic Steel Industries Inc.  
Cady Bag Company  
Canochee Electric Membership Corporation  
Chemical Products Corporation  
Cobb Electric Membership Corporation  
DBK Minerals, Inc.  
Ferro Corporation  
Filler Products Inc.  
Flitzgard Chamber of Commerce  
Flint Electric Membership Corporation  
Ford Atlanta Assembly Plant  
Formetco Inc.  
General Time Corporation  
Georgia Agribusiness Council, Inc.  
Georgia Automobile Dealers Association  
Georgia Beer Wholesalers Association, Inc.  
Georgia Coalition for Vehicle Choice  
Georgia Electrical Membership Corporation  
Georgia Farm Bureau Federation  
Georgia Mining Association  
Georgia Textile Manufacturers Association  
Georgians For Better Transportation  
GM Doraville Assembly Plant  
Goldens' Foundry & Machine Co.  
Habersham Electric Membership Corporation  
Harmony Group  
Heaton Erecting Inc.  
Laborers' International Union of North America  
Little Ocmulgee Electric Membership Corporation  
National Show Horse Registry  
Oglethorpe Power Corporation  
Pascoe Building Systems, Inc.  
Slash Pine Electric Membership Corporation  
Southeastern Label & Graphic Standardsbred Pleasure Horse Organization  
Sterling Pulp Chemicals, Inc.  
The Seniors Coalition  
Thele Kaolin Company  
Wilkinson Kaolin Associates, LTD.

**Hawaii**  
BHP (USA) Inc.  
Hawaii Automobile Dealers Association  
Hawaii Farm Bureau Federation  
United Four Wheel Drive Association

**Idaho**  
Blueribbon Coalition  
Fall River Rural Electric Cooperative, Inc.  
Federated Women in Timber  
Hells Canyon Alliance  
Idaho Association of Commerce & Industry  
Idaho Association of Realtors  
Idaho Automobile Dealers Association  
Idaho Farm Bureau Federation  
Idaho Service Station Association, Inc.  
Idaho State Grange  
Idaho State Snowmobile Association  
Independent Miners  
Inland 465  
Multiple Land Use  
United Four Wheel Drive Association  
Western Partners

**Illinois**  
Acme Metals, Inc.  
American Agriculture/American Corn Growers Association of Illinois  
Central Illinois Light Company  
Central Illinois Public Service Company  
Chemical Industry Council of Illinois  
Chicago Automobile Trade Association  
Chrysler Belvidere Assembly Plant  
CITGO Petroleum Corporation  
Clinton County Electric Cooperative, Inc.  
Eastern Illini Electric Cooperative  
Egypt Electric Co-op  
Egyptian Electric Cooperative Association  
Ford Chicago Assembly Plant  
Ford Chicago Stamping Plant  
Illinois Association of Convenience Stores  
Illinois Automobile Dealers Association  
Illinois Citizens for a Sound Economy  
Illinois Coal Association  
Illinois Coalition for Vehicle Choice  
Illinois Farm Bureau  
Illinois Fertilizer & Chemical Association  
Illinois Highway Users Association  
Illinois Manufacturers' Association  
Illinois Oil & Gas Association  
Illinois Petroleum Council  
Illinois Petroleum Marketers Association  
Illinois Power Company  
Illinois Road Builders Association  
Illinois Transportation Association  
Marisa Mine Labor Management Positive Change Process Committee  
Mid West Truckers Association  
Midwest Dairy Foods Association, Inc.  
Monroe County Electric Co-Operative, Inc.  
Partnership for Environmental Progress  
Rural Electric Convenience Cooperative Company  
Southern Illinois Electric  
Southern Illinois Electric Cooperative  
The Seniors Coalition  
Thrall Car Manufacturing Co.  
Tri-County Electric Cooperative, Inc.  
United Mine Workers of America/Illinois  
Wayne-White Counties Electric Cooperative  
Zeigler Coal Holding Company

**Indiana**  
Benham Press Inc.  
Black Beauty Coal  
Carroll County Rural Electric Membership Cooperative  
Chrysler Indiana Transmission Plant  
Chrysler Indianapolis Foundry  
Chrysler Kokomo Casting Plant  
Chrysler Kokomo Transmission Plant

Chrysler New Castle Machining and Forge Plant  
Decatur County Rural Electric Membership Corporation  
Dubois Rural Electric Cooperative  
Duke Energy  
East Chicago/Horth Lake County Chamber of Commerce  
Ford Automotive Products Operations, Indianapolis Plant  
Ford Vistion Automotive Services  
GM Anderson Operations  
GM Ft. Wayne Assembly Plant  
GM Indianapolis Operations  
GM Kokomo Delco Electronics  
Harrison County Rural Electric Membership Cooperative  
Hendrick County Rural Electric Membership Cooperative  
Homecrest Corporation  
Hoosier Energy Rural Electric Cooperative, Inc.  
Indiana Association of Cities & Towns  
Indiana Chamber of Commerce  
Indiana Coal Council, Inc.  
Indiana Coalition for Vehicle Choice  
Indiana Farm Bureau, Inc.  
Indiana Land Improvement Contractors Association  
Indiana Manufactured Housing Association  
Indiana Manufacturers Association  
Indiana Petroleum Council  
Indiana State AFL-CIO  
Indiana State Grange  
Indianapolis Chamber of Commerce  
Inland Steel Industries Inc.  
Jackson County Rural Electric Membership Corporation  
Jasper County Rural Electric Membership Corporation  
Kosciusko Rural Electric Membership Corporation  
National Steel  
Noble Rural Electric Membership Co-op  
Orange County Rural Electric Membership Corporation  
Recreation Vehicle Indiana Council  
Southern Indiana Rural Electric Cooperative  
Steel Dynamics, Inc.  
United Mineworkers of America Indiana COMPAC  
United Rural Electric Membership Corporation  
Utilities District of Western Indiana Rural Electric Membership Corporation  
Western Indiana Energy

**Iowa**  
Agri-Business Association of Iowa  
Algona Municipal Utilities  
Associated General Contractors of Iowa  
Eastern Iowa Light and Power Cooperative  
Hancock County Rural Electric Cooperative  
Harrison County Rural Electric Cooperative  
Hawkeye Tri-County Electric Cooperative  
Heartland Carwash Association  
Interstate Power Company  
Iowa Association of Business & Industry  
Iowa Farm Bureau  
Iowa Good Roads Association  
Iowa Limestone Producers Association  
Iowa Motor Truck Association  
Iowa Petroleum Council  
Iowa Retail Federation  
Iowa State Grange  
La Casa Latina, Inc.  
Northwest Iowa Power Cooperative  
Osceola Electric Co-op  
Plumbing Heating Cooling Contractors of Iowa  
South East Iowa Cooperative Electric  
The Seniors Coalition  
Western Iowa Power Cooperative  
Wright County Rural Electric Cooperative

**Kansas**  
Automobile Dealers Association of Greater Kansas City  
Butler Rural Electric Cooperative, Inc.  
Farmers Co-op Shipping  
Ford Motor Credit Corporation, Kansas Regional Office  
Ford Motor Company Distribution Center  
GM Dlathe Delphi Energy & Engine  
GM-Fairfax Assembly Plant  
Jim Allen & Associates  
John C. Boltenberg & Associates  
Kansas AFL-CIO  
Kansas Aggregate Producers' Association  
Kansas Air Quality Coalition  
Kansas Association of Wheat Growers  
Kansas Automobile Dealers Association  
Kansas Chamber of Commerce & Industry  
Kansas Coalition for Vehicle Choice  
Kansas Cooperative Council  
Kansas Corn Growers Association  
Kansas Farm Bureau  
Kansas Fertilizer & Chemical Association  
Kansas Grain & Feed Association  
Kansas Grain Sorghum Producers Association  
Kansas Highway Users Association  
Kansas Independent Automobile Dealers Association  
Kansas Independent Oil & Gas Association  
Kansas Lawn & Garden, Inc.  
Kansas Livestock Association  
Kansas Motor Carriers Association  
Kansas Oil Marketers Association  
Kansas Petroleum Council  
Kansas Pork Producers Council  
Kansas Ready Mixed Concrete Association  
Kansas Skeet Shooting Association  
Kansas Society of Professional Engineers  
Kansas Soybean Association  
Lane-Scott Electric Cooperative  
Lincoln Mercury - Kansas Regional Office  
Lyon Coffey Electric Cooperative, Inc.  
Mid-America Lumbermen Association  
Midland Marketing, Inc.  
National Cooperative Refinery Association  
Ninnescah Electric Cooperative  
Pat Hubbell Associates, Inc.  
Pioneer Electric Cooperative, Inc.  
Prairie Land Electric Cooperative  
S & L Industries, Inc.  
Sedgwick County Electric Co-op

Shepherd Team Auto Plaza  
Sublette Co-op  
Sumner-Cowley Electric Cooperative  
Sunflower Electric Power Corporation  
The Ark Valley Electric Cooperative Association, Inc.  
The Jewell Mitchell Cooperative Electric Co., Inc.  
The Victory Electric Cooperative Association, Inc.  
Western Cooperative Electric Association, Inc.  
Wheatland Electric Cooperative, Inc.  
Zenith Cooperative Grain Company

**Kentucky**  
Blue Grass Rural Electric Cooperative Corporation  
Clark Energy Cooperative  
Coal Operators & Associates, Inc.  
East Kentucky Power Cooperative, Inc.  
Farmers Rural Electric Cooperative Corporation  
Ford Louisville Assembly Plant  
Fox Creek Rural Electric Cooperative Corporation  
Grayson Rural Electric Cooperative Corporation  
Greater Louisville Automobile Dealers Association  
Henderson Union Electric Cooperative  
Inter-County Rural Electric Cooperative Corporation  
Jackson Energy Cooperative  
Kentucky Automobile Dealers Association  
Kentucky Chamber of Commerce  
Kentucky Coal Association  
Kentucky Coal Marketing and Export Council  
Kentucky Farm Bureau Federation  
Kentucky Petroleum Council  
Kentucky Safety Council  
Kentucky United Mine Workers  
Meade County Rural Electric Co-op Corporation  
Nolin Rural Electric Cooperative  
Shelby Energy Cooperative  
South Kentucky Rural Electric Co-op Corporation  
Taylor County Rural Electric Cooperative Corporation  
Warren Rural Electric Co-op  
West Kentucky Rural Electric Cooperative Corporation

**Louisiana**  
American Sugar Cane League  
Association of Louisiana Electric Co-ops  
Bob Post Chrysler-Jeep  
Bossier Chamber of Commerce  
Coalition for a Competitive Louisiana Economy  
Concordia Electric Co-op, Inc.  
Dixie Electric Membership Corporation  
GM Monroe Delphi Interior & Lighting  
Louisiana AFL-CIO  
Louisiana Ag Industries Association  
Louisiana Agriculture Consultants  
Louisiana Ammonia Producers  
Louisiana Association of Business & Industry  
Louisiana Association of Waterway Operators  
Louisiana Automobile Dealers Association  
Louisiana Branch, American Road and Transportation Builders Association  
Louisiana Citizens for a Sound Economy  
Louisiana Coalition for Vehicle Choice  
Louisiana Farm Bureau Federation, Inc.  
Louisiana Homebuilders Association  
Louisiana Landowners Association  
Louisiana Marine & Motorcycle Trades Association  
Louisiana Pulp & Paper Association  
Louisiana Railroad Association  
Louisiana Realtors Association  
Pointe Coupee Electric Membership Corporation  
Washington-St. Tammany Electric Co-op, Inc.

**Maine**  
Maine Automobile Dealers Association  
Maine Conservation Rights Institute  
Maine Environmental Perspectives, Inc.  
Maine Farm Bureau Association  
Maine Motor Transport Association  
Maine Petroleum Association  
Maine Sovereignty International  
New England Service Station & Auto Repair Association  
United Four Wheel Drive Association

**Maryland**  
Calhoun Electric Cooperative  
Choptank Electric Cooperative, Inc.  
GM Baltimore Assembly Plant  
Maryland Farm Bureau, Inc.  
Maryland Highway Contractors Association  
Maryland Petroleum Council  
Maryland State Grange  
Polomac Edison  
The Seniors Coalition  
United Four Wheel Drive Association

**Massachusetts**  
Construction Industries of Massachusetts  
Frost Motors, Inc.  
Massachusetts Farm Bureau Federation, Inc.  
Massachusetts State Automobile Dealers Association  
Massachusetts State Grange  
New England Service Station & Auto Repair Association  
United Four Wheel Drive Association

**Michigan**  
Cherryland Electric Cooperative  
Chrysler Corporation  
Consumers Energy  
Detroit Auto Dealers Association  
Detroit Edison Company  
Federated Women in Timber  
First Independence National Bank

Ford Motor Company  
General Motors Corporation  
Michigan Agri-Business Association  
Michigan Electric Cooperative Association  
Michigan Farm Bureau  
Michigan Manufacturers Association  
Michigan Petroleum Association  
Michigan State Chapter, National Motorists Association  
Michigan State Grange  
National Truck Equipment Association  
Ontonagon County Rural Electric Association  
Southeastern Energy Cooperative  
Thumb Electric Co-op  
United Four Wheel Drive Association  
Wolverine Power Supply Cooperative

**Minnesota**  
Bellrami Electric Cooperative  
Clearwater-Polk Electric Cooperative  
Federated Women in Timber  
Ford Twin Cities Assembly Plant  
GM Edina Service Parts Operations  
Minnesota Service Station Association  
Minnesota Automobile Dealers Association  
Minnesota Environmental Coalition of Labor and Industry  
Minnesota Farm Bureau Federation  
Minnesota Petroleum Council  
Minnesota Power  
Minnesota Rural Electric Association  
Minnesota Valley Cooperative Light & Power Association  
Nobles Service Parts Operations  
North Star Electric Cooperative  
Northwest Airlines  
Otter Tail Power Company  
P.K.M. Electric Cooperative, Inc.  
Red Lake Electric Co-op  
Renville Sibley Co-op Power Association  
Roseau Electric Cooperative  
Steele Waseca Co-op Electric  
The Seniors Coalition  
Traverse Electric Cooperative, Inc.  
Tri-County Electric Cooperative  
United Four Wheel Drive Association  
United Power Association  
Wild Rice Electric Cooperative, Inc.

**Mississippi**  
Coast Electric Power Association  
Delta Electric Power Association  
East Ford, Inc.  
Mississippi County Electric Cooperative, Inc.  
Mississippi Farm Bureau Federation  
Mississippi Manufacturers Association  
Prentiss County Electric Power Association  
United Four Wheel Drive Association

**Missouri**  
American Agriculture Movement Inc.  
Arch Coal, Inc.  
Associated Electric Cooperative  
Associated Industries of Missouri  
Association of Missouri Electric Cooperative  
Atchison-Holt Electric Cooperative  
Central Electric Power Cooperative  
Consolidated Electric Cooperative  
Don Wessel Olds-Honda-GMC, Inc.  
Farmers & Commercial Bank  
Ford Kansas City Assembly Plant  
Ford St. Louis Assembly Plant  
G W Composites, Inc.  
GM Hazelwood Service Parts Operations  
GM Wentzville Assembly Plant  
Goebel Group  
Kansas City Southern Railroad  
Mazco Prods, Inc.  
MFA Incorporated  
Mining Industry Council of Missouri  
Missouri Ag Industries Council, Inc.  
Missouri Automobile Dealers Association  
Missouri Chamber of Commerce  
Missouri Coalition for Vehicle Choice  
Missouri Dairy Association  
Missouri Farm Bureau Federation  
Missouri Highway Users Association  
Missouri Oil Council  
Missouri Pork Producers Association  
Missouri Soybean Association  
Missouri State Grange  
North Central Missouri Electric  
Peabody Holding Company, Inc.  
Regulatory Environmental Group for Missouri  
Roland Industries, Inc.  
SAC Osage Electric Cooperative  
SeMaHo Electric Cooperative  
Senior Living Newspaper  
Stone Hill Winery  
Sunnen Products Co.  
The Empire District Electric Co.  
The Frick Company  
Union Electric Company  
West Central Electric Cooperative, Inc.  
Women's Mining Coalition

**Montana**  
American Stud Company  
American Timber  
Communities for a Great Northwest  
Federated Women in Timber  
Great Northern Properties Limited Partnership  
Hill County Electric Cooperative, Inc.  
Montana 4 x 4 Association  
Montana Farm Bureau Federation  
Montana Forest Owners Association  
Montana Mining Association  
Montana State Grange

**Montana Women Involved in Farm Cooperatives**  
Montana Wood Products Association  
Montana Woolgrowers Association  
Montanans for Multiple Use  
Montanans for Private Property Rights  
Owens & Hurst Lumber Company

# MILLIONS OF AMERICANS - CAN'T BE WRONG.

Sheridan Electric Co-op, Inc.  
Tri-County Montanans for Multiple Use  
United Four Wheel Drive Association  
Women's Mining Coalition  
Yellowstone Valley Electric Co-op

**Nebraska**  
Albion Chamber of Commerce  
Albion Development Corporation  
Associated Builders & Contractors,  
Cornhuskers Chapter  
Burt County Public Power District  
Butler County Rural Public Power District  
Chimney Rock Public Power District  
Cornhusker Public Power District  
DWI Smart, Inc.  
Greater Omaha Chamber of Commerce  
Hartington Telephone Co., Inc.  
Holdrege Police Department  
Loup River Public Power District  
Lyman-Richey Corporation  
Nebraska Bulk Transports, Inc.  
Nebraska Chamber of Commerce &  
Industry  
Nebraska Coalition for Vehicle Choice  
Nebraska Conservatives for Freedom  
Nebraska Farm Bureau Federation  
Nebraska Grain and Feed Association  
Nebraska Independent Oil & Gas  
Association  
Nebraska Licensed Beverage Association  
Nebraska New Car & Truck Dealers  
Association  
Nebraska Petroleum Council  
Nebraska Rifle and Shotgun Association  
Nebraska Rural Electric Association  
Nebraska State AFL-CIO  
North Central Public Power District  
Polk County Rural Public Power District  
Professional Insurance Agents of  
Nebraska  
Regency Homes  
Roberts Dairy Company  
Roe Buick Oldsmobile Pontiac Inc.  
Roosevelt Public Power District  
Seward County Rural Public Power  
District  
South Central Public Power District  
Southwest Public Power District  
The Seniors Coalition  
Twin Valleys Public Power District  
Union Pacific Railroad  
York County Rural Public Power District

**Nevada**  
BHP (USA) Inc.  
GM Reno Service Parts Operations  
Nevada Farm Bureau Federation  
Nevada Franchised Auto Dealers  
Association  
The Seniors Coalition  
United Four Wheel Drive Association  
Women's Mining Coalition

**New Hampshire**  
Draper Energy Company, Inc.  
New England Service Station & Auto  
Repair Association  
New Hampshire Automobile Dealers  
Association  
New Hampshire Farm Bureau Federation  
New Hampshire Petroleum Council  
United Four Wheel Drive Association

**New Jersey**  
Express Marine, Inc.  
GM Delphi Interior & Lighting  
GM Linden Assembly Plant  
GM New Brunswick Delphi Energy &  
Engine  
Maguire Automotive Group  
New Jersey Farm Bureau  
New Jersey Petroleum Council  
New Jersey State Chapter, National  
Motorists Association  
New Jersey State Grange  
The Seniors Coalition  
United Four Wheel Drive Association

**New Mexico**  
Albuquerque Production Credit  
Association  
BHP (USA) Inc.  
Burlington Northern Santa Fe  
Chines Corners Operating Company  
Coalition of Arizona/New Mexico  
Counties  
Continental Divide Electric Cooperative,  
Inc.  
Galles Motor Company  
Las Vegas-San Miguel Chamber of  
Commerce  
Mason Contractors Association of New  
Mexico  
New Mexico AFL-CIO  
New Mexico Automobile Dealers  
Association  
New Mexico Cattle Growers Association  
New Mexico Chapter American Fire  
Sprinkler Association  
New Mexico Coalition for Vehicle Choice  
New Mexico Council of Car Clubs  
New Mexico Farm & Livestock Bureau  
New Mexico Grocers Association  
New Mexico Highway Users Conference  
New Mexico Horse Breeders Association  
New Mexico Horsemen's Association  
New Mexico Motor Carriers Association  
New Mexico Oil & Gas Association  
New Mexico Petroleum Marketers  
Association  
New Mexico R V Dealers Association  
New Mexico Ready Mix Concrete and  
Aggregates Association  
New Mexico Restaurant Association  
New Mexico Retail Association  
New Mexico Rural Electric Cooperatives

New Mexico Sheet Metal Contractors  
Association  
New Mexico Wheat Growers Association  
New Mexico Wool Growers  
Northern Rio Arriba Electric Co-op, Inc.  
Plains Electric Generation &  
Transmission Cooperative  
Rich Ford  
Rio Grande Underground Contractors  
Association  
Springer Electric Cooperative, Inc.  
Watson Truck & Supply, Inc.  
Women's Mining Coalition

**New York**  
A. T. Massey Coal Co., Inc.  
Campground Owners of New York  
Chrysler New Process Gear Plant  
Delaware County Electric Cooperative,  
Inc.  
Empire State Forest Products Association  
Ford Buffalo Stamping Plant  
GM Lockport Delphi Harrison  
GM Rochester Delphi Energy & Engine  
GM Tonawanda Powertrain Plant  
IUOE Local 832  
J. Andrew Lange Inc.  
New York Citizens for a Sound Economy  
New York Coalition for Transportation  
Safety  
New York Coalition for Vehicle Choice  
New York Farm Bureau, Inc.  
New York Good Roads Association  
New York State Association of Service  
Stations, Inc.  
New York State Auto Dealers Inc.  
New York State Grange  
New York State Petroleum Council  
New York State Rural Electric  
Cooperative Association  
New York State Snowmobile Association  
New York State Used Car Dealers  
Association  
Northeastern Loggers Association  
Northeastern Lumber Manufacturers  
Association  
Northeastern Retail Lumber Association  
Oneida-Madison Electric Cooperative,  
Inc.  
Olsego Electric Cooperative, Inc.  
Reid Petroleum Corporation  
Rochester Automobile Dealers  
Association  
Route 16 Association  
Steubert Rural Electric Cooperative  
Suit-Kote  
The Seniors Coalition

**North Carolina**  
AAA Carolinas  
Brunswick Electric Membership  
Cooperative  
Carolina Power & Light  
GS Industries  
Manufacturers & Chemical Industry  
Council  
North Carolina Auto Dealers Association  
North Carolina Citizens for Business and  
Industry  
North Carolina Electric Membership  
Corporation  
North Carolina Farm Bureau Federation,  
Inc.  
North Carolina Petroleum Council  
North Carolina State Grange  
North Carolina Textile Manufacturers  
Association  
North Carolina Trucking Association  
South River Electric Membership  
Corporation  
United Four Wheel Drive Association

**North Dakota**  
Basin Electric Power Cooperative  
Cass County Electric Cooperative  
Cavalier Rural Electric Cooperative, Inc.  
Greater North Dakota Manufacturers  
Association  
James Valley Electric Co-op, Inc.  
KEM Electric Cooperative, Inc.  
McLean Electric Cooperative, Inc.  
Minnkota Power  
Montana Dakota Utilities Resources  
Group, Inc.  
Mountrail-Williams Electric Cooperative  
North Dakota Electric Cooperative  
North Dakota Automobile Dealers  
Association  
North Dakota Farm Bureau  
North Dakota Petroleum Council  
Oliver-Mercer Electric Co-op  
Sheyenne Valley Electric  
United Four Wheel Drive Association  
West Plains Electric Co-op

**Ohio**  
Adams Rural Electric Co-op, Inc.  
American Iron Ore Association  
Buckeye Industrial  
Buckeye Power, Inc.  
Buckeye Rural Electric Co-operative  
Cambridge Area Chamber of Commerce  
Chrysler Dayton Thermal Products Plant  
New Mexico Grocers Association  
Chrysler Toledo Assembly Plant  
Chrysler Twinsburg Stamping Plant  
Cleveland-Cliffs, Inc.  
Fairborn Area Chamber of Commerce  
GM Dayton Operations  
GM Lordstown Operations  
GM Moraine Operations  
Greater Cleveland Automobile Dealers  
Association  
Lorain-Medina Rural Electric  
Cooperative, Inc.  
Marietta Coal Company  
Marton Rural Electric Co-op, Inc.

Midland Enterprises  
Monongahela Power  
North Central Electric Cooperative, Inc.  
North Western Electric Co-op  
Ohio B.A.S.S. Chapter Federation  
Ohio Cast Metals Association  
Ohio Chamber of Commerce  
Ohio Coalition for Vehicle Choice  
Ohio Edison Company  
Ohio Farm Bureau Federation, Inc.  
Ohio Manufacturers Association  
Ohio Mining & Reclamation Association  
Ohio Petroleum Council  
Ohio Small Business Council  
Ohio Vegetable & Potato Growers  
Association  
Paulding-Putnam Electric Coop., Inc.  
Republic Engineered Steels, Inc.  
Stillpass-Lincoln-Mercury-Volvo-Honda  
TDI, Inc.  
The Frontier Power Company  
The Seniors Coalition  
Toledo Automobile Dealers Association  
United Mine Workers of America,  
District 6  
Washington Electric Cooperative, Inc.  
WCI Steel Inc.  
West Penn Power  
Williams Ford

**Oklahoma**  
AAA Oklahoma  
Alfalfa Electric Cooperative  
East Central Oklahoma Electric Co-op  
Inc.  
Environmental Federation of Oklahoma  
Ford Tulsa Glass Plant  
GM Oklahoma City Assembly Plant  
Greater Oklahoma City Chamber of  
Commerce  
Kerr McGee Coal Corporation  
Oklahoma Automobile Dealers  
Association  
Oklahoma Automotive Aftermarket  
Association  
Oklahoma Citizens for a Sound Economy  
Oklahoma Electric Co-op  
Oklahoma Farm Bureau  
Oklahoma Highway Users Federation  
Oklahoma State Chamber/Association of  
Business & Industry  
Oklahoma Trucking Association  
Rural Electric Cooperative, Inc.  
Tri-County Electric Cooperative, Inc.

**Oregon**  
Associated Oregon Industries  
Federated Women in Timber  
Oregon Automobile Dealers Association  
Oregon Farm Bureau Federation  
Oregon Lands Coalition  
Oregon State Chapter, National Motorists  
Association  
Oregon State Grange  
Pacific Northwest Generaling Co-op  
The Seniors Coalition  
United Four Wheel Drive Association  
Wasco Electric Co-op  
Women's Mining Coalition

**Pennsylvania**  
Allegheny Power  
ARMCO Inc.  
Associated Pennsylvania Constructors  
Associated Petroleum Industries of  
Pennsylvania  
Bethlehem Steel Corporation  
Brown-Daub, Inc.  
Carpenter Technology Corporation  
Claverack Rural Electric Cooperative  
Commission for Delivery of Effective  
Public Service  
Conrail  
CONSOL Coal Group  
Consolidated Association of Western  
Pennsylvania  
Davies Ford, Inc.  
East Penn Manufacturing Company, Inc.  
Ford North Penn Electronics Plant  
GM Bensalem Service Parts Operations  
GM Pittsburgh Metal Fabrication Plant  
Graft Chrysler Plymouth Dodge Jeep  
Eagle Inc.  
Harrisburg Automotive Trade  
Association  
Hepburnia Coal  
Johnstown America Corporation  
Lebanon Valley Chamber of Commerce  
Lukens, Inc.  
Main Line Chamber of Commerce  
Pennsylvania Anthracite Council  
Pennsylvania Association of Non-Profit  
Organizations  
Pennsylvania Chamber of Business and  
Industry  
Pennsylvania Coal Association  
Pennsylvania Coalition for Vehicle  
Choice  
Pennsylvania Farm Bureau  
Pennsylvania Farmers Union  
Pennsylvania Highway Information  
Association  
Pennsylvania Highway Users Conference  
Pennsylvania RV Camping Association  
Pennsylvania State Grange  
Pittsburgh Airport Area Chamber of  
Commerce  
Polomac Edison  
Shenango Incorporated  
The Hondru Dealerships  
The Seniors Coalition  
USS-POSCO Industries  
Vision North Penn Electronics Facility  
West Penn Power  
Woltz & Wind Ford  
York County Chamber of Commerce

**Rhode Island**  
Rhode Island Farm Bureau Federation,  
Inc.  
Rhode Island State Chapter, National  
Motorists Association  
United Four Wheel Drive Association

**South Carolina**  
Alken Electric Cooperative, Inc.  
Coastal Electric Cooperative  
Edisto Electric Cooperative  
Fairfield Electric Cooperative, Inc.  
Horry Electric Cooperative, Inc.  
Marlboro Electric Cooperative  
South Carolina Chamber of Commerce  
South Carolina Farm Bureau Federation  
South Carolina Petroleum Council  
South Carolina State Grange  
The Seniors Coalition  
United Four Wheel Drive Association

**South Dakota**  
Cherry-Todd Electric Co-op  
East River Electric Power Cooperative  
Inc.  
Gr. -d Electric Cooperative, Inc.  
H-D Electric Cooperative, Inc.  
Heartland Consumers Power District  
Kingsbury Electric Cooperative  
McCook Electric Cooperative, Inc.  
Moreau Grand Electric Cooperative, Inc.  
Robinsone-Enhet Ford  
Rosebud Electric Cooperative, Inc.  
South Dakota AFL-CIO  
South Dakota Automobile Dealers  
Association  
South Dakota Farm Bureau Federation  
South Dakota Petroleum Council  
United Four Wheel Drive Association  
Women's Mining Coalition

**Tennessee**  
Amalgamated Transit Union Local 1235  
AmeriSteel's West Tennessee Steel Mill  
Division  
Associated Builders & Contractors  
Automotive Wholesalers Association  
Bakers, Confectionery & Tobacco Local  
25  
Colonial Diversified Polymer Products  
Fischer Construction Company  
Ford Nashville Glass Plant  
Four Ridge Homes  
Home Builders Association of Greater  
Kingsport  
Home Builders Association of Middle  
Tennessee  
Iron Workers Local Union 492  
Johnson City Area Home Builders  
Association  
Nashville Central Labor Council  
Old Hickory Employees Council  
Perfect Equipment Corporation  
Phillips Builders  
Powell Valley Electric Cooperative  
Saturn Corporation  
Southland Associated, Inc.  
Tennessee AFL-CIO Labor Council  
Tennessee Association of Business  
Tennessee Association of Marine  
Dealers, Resorts & Marinas  
Tennessee Cattlemen's Association  
Tennessee Coalition for Vehicle Choice  
Tennessee Environmental Conservation  
Organization  
Tennessee Farm Bureau Federation  
Tennessee Farmers Co-op  
Tennessee Forage & Grassland Council  
Tennessee Forestry Association  
Tennessee Horse Council  
Tennessee Petroleum Council  
Tennessee Road Builders Association  
Tennessee Soybean Association  
Tennessee State Grange  
Tennessee Trucking Association  
Tennessee Valley Electric Cooperative,  
Inc.  
The Seniors Coalition  
Tri-County Electric Membership  
Corporation  
UAW Local 737  
UAW Local 737 Retiree Chapter  
UAW Local 1832  
UAW Local 1853, Saturn Corporation  
United Mine Workers Association  
West Tennessee Chapter of Associated  
Builders & Contractors, Inc.

**Texas**  
Agricultural Workers Mutual Auto  
Insurance Company  
American Land Foundation  
BHP (USA) Inc.  
Bowie-Cass Electric Cooperative, Inc.  
Burlington Northern Santa Fe  
Central & South West Corporation  
Davis Mountains Trans-Pecos Heritage  
Association  
Federal Land Bank Association of Mason  
Gillman Companies  
GM Arlington Assembly Plant  
Golden Spread Electric Cooperative  
Hill Country Heritage Association  
Houston Auto Dealers Association  
Independent Cattlemen's Association of  
Texas  
Jackson Electric Cooperative, Inc.  
Jasper-Newton Electric Cooperative, Inc.  
Johnson Country Electric Cooperative  
Lamar County Electric Co-op  
Livestock Marketing Association of Texas  
Magic Valley Electric  
Mid-South Electric Cooperative  
Association  
National Association of Trailer  
Manufacturers  
Navisota Valley Electric Co-op

North Plains Electric Cooperative  
Northeast Texas Electric Cooperative,  
Inc.  
Rio Grande Electric Cooperative, Inc.  
Rusk County Electric Cooperative, Inc.  
Small Business United of Texas  
South Texas Cotton and Grain  
Association  
Southeast Texas Independent  
Cattlemen's Association  
Southwest Meal Association  
Swisher Electric Cooperative, Inc.  
Teadt H. A., Inc.  
Tenth District Farm Credit Council  
Texas Ag Industry Association  
Texas Agricultural Cooperative Council  
Texas Association of Agricultural  
Consultants  
Texas Association of Business &  
Chamber of Commerce  
Texas Automobile Dealers Association  
Texas Cattle Feeders Association  
Texas Citizens for a Sound Economy  
Texas Coalition for Vehicle Choice  
Texas Farm Bureau  
Texas Farmers Union  
Texas Grain and Feed Association  
Texas Grain Sorghum Association  
Texas Poultry Federation  
Texas Produce Association  
Texas Public Policy Foundation  
Texas Quarter Horse Association  
Texas Seed Trade Association  
Texas State Chapter, National Motorists  
Association  
Texas State Grange  
Texas Turkey Federation  
Texas Wildlife Association  
The Chair of Free Enterprise, University  
of Texas, Austin  
The Seniors Coalition  
Trans Texas Heritage Association  
United Four Wheel Drive Association  
Upshur-Rural Electric Cooperative  
Corporation  
Victoria Crossroads Independent  
Cattlemen's Association  
Wharton County Electric Cooperative,  
Inc.

**Utah**  
Ganone Power Association, Inc.  
Geneva Steel  
Savage Industries, Inc.  
The Seniors Coalition  
United Four Wheel Drive Association  
Utah AFL-CIO  
Utah Automobile Dealers Association  
Utah Farm Bureau Federation  
Utah Rural Electric Association  
Western States Coalition  
Women's Mining Coalition

**Vermont**  
Associated Industries of Vermont  
New England Service Station & Auto  
Repair Association  
The Car Store, Inc.  
United Four Wheel Drive Association  
Vermont Automobile Dealer Association  
Vermont Chamber of Commerce  
Vermont Farm Bureau, Inc.  
Vermont Petroleum Council  
Vermont State Grange

**Virginia**  
AAA of Tidewater  
Adams Construction Company  
American Rental Association  
AMVEST Corporation  
Anderson Brothers Lumber Company,  
Inc.  
Aquia Pines RV Park  
Atlantic Coast Chapter, National Electric  
Contractors Association, Inc.  
Beach Ford/Barton Ford Lincoln Mercury  
Candler Oil Co.  
Car Club Council of Central Virginia  
Carter Myers Automotive  
Chariot, Inc.  
Chesapeake Cove Marina  
Community Electric Cooperative  
Concrete Precast Structures Inc.  
Dana Corporation  
Delta Boat Sales  
Dick Keller Automobiles, Inc.  
Dick Strauss Ford  
Ford Norfolk Assembly Plant  
Friendly Lincoln-Mercury Inc.  
Frontiers of Freedom  
GM Fredericksburg Powertrain Plant  
GM Martinsburg Service Parts Operations  
Hampton Roads RV Association  
Homer Cox Ford  
Humphreys Enterprises  
James River Coal Company  
Jaymar Enterprises/Classic Cars  
Corporation  
Lee Highway Paving Corporation  
Mecklenburg Electric Cooperative  
National Concrete Masonry Association  
Northern Neck Electric Cooperative  
Old Dominion Electric Cooperative  
Permatite Concrete Products Company  
Pittston Coal Co.  
Potomac Edison, Virginia  
Pre-Owned Auto Sales  
Prince George Electric Cooperative  
Rappahannock Electric Cooperative  
Shenandoah Valley Electric Cooperative  
Spotts, Smith, Fain & Buis  
The Center for Energy & Economic  
Development  
The Seniors Coalition  
Tidewater Horse Council  
UAW Local 919  
UMWA District 28

Virginia Agribusiness Council  
Virginia Automobile Dealers Association  
Virginia Building Material Association  
Virginia Campground Association  
Virginia Chamber of Commerce  
Virginia Chemical Manufacturers  
Association  
Virginia Citizens for a Sound Economy  
Virginia Coal Association  
Virginia Coalition for Vehicle Choice  
Virginia Eye Institute  
Virginia Farm Bureau Federation, Inc.  
Virginia Manufacturers Association  
Virginia Motor Vehicle Conference  
Virginia Petroleum Council  
Virginia Petroleum Jobbers Association  
Virginia State Chapter, National  
Motorists Association  
Women's Mining Coalition

**Washington**  
American Land Rights Association  
American Reporting Corporation  
Association of Washington Business  
BHP (USA) Inc.  
Elmhurst Mutual Power & Light  
Federated Women in Timber  
Inland Power & Light Company  
Northwest Business & Labor Alliance  
Northwest Mining Association  
Pacific Rim Forestry  
Recreational Gaming Association  
The Balance Council  
Triple D Construction  
United Four Wheel Drive Association  
Washington Car Club Council  
Washington Coalition for Vehicle Choice  
Washington Farm Bureau  
Washington Rural Electric Co-op  
Association  
Washington State Building and  
Construction Trades Council, AFL-CIO  
Washington State Grange  
Washington State License Beverage  
Association  
Washington Women in Timber  
Women's Mining Coalition  
World Organization of Automotive  
Hobbyists

**West Virginia**  
Arch Coal, Inc.  
Buffalo Coal Company  
Eastern Associated Coal Corporation  
Harrison Rural Electric Cooperative  
Labor Management Postive Change  
Process Harris Mine & Plant  
Monongahela Power  
United Four Wheel Drive Association  
United Mine Workers of America,  
District 17  
United Mine Workers of America,  
District 6  
Weirton Steel Corporation  
West Virginia AFL-CIO  
West Virginia Coal Association  
West Virginia Coal Forum  
West Virginia Farm Bureau, Inc.  
West Virginia Forestry Association  
West Virginia Gasoline Dealers &  
Automotive Repair  
West Virginia Mining and Reclamation  
Association  
West Virginia Petroleum Council  
West Virginia State Grange  
Wheeling Pittsburgh Steel Corporation

**Wisconsin**  
Carlson's Pontiac, Cadillac, Oldsmobile,  
GMC Truck  
Clark Electric Cooperative  
Crawford Electric Cooperative  
Federated Women in Timber  
GM Janesville Assembly Plant  
GM Milwaukee Delphi Energy & Engine  
Harnischfeger Industries  
Independent Business Association of  
Wisconsin  
National Motorists Association  
P & H Mining Equipment  
St. Croix Electric Co-op  
The Seniors Coalition  
United Four Wheel Drive Association  
Wisconsin Electric Cooperative  
Association  
Wisconsin Farm Bureau Federation  
Wisconsin Petroleum Council  
Wisconsin Public Service Resources  
Corporation  
Wisconsin Road Builders Association  
Wisconsin State Grange  
Women's Mining Coalition

**Wyoming**  
Bear Lodge Multiple Use Association  
Big Horn Rural Electric Co-op  
Bridger Valley Electric Association, Inc.  
Federated Women in Timber  
Frontiers-Wyoming  
Hot Springs R.E.A., Inc.  
Powder River Energy Corporation  
Riverton Valley Electric Association  
United Four Wheel Drive Association  
Women's Mining Coalition  
Wyoming Farm Bureau Federation  
Wyoming Heritage Society  
Wyoming Mining Association

**MR. PRESIDENT: DON'T RUSH INTO AN UNWISE AND UNFAIR UNITED NATIONS AGREEMENT THAT'S BAD FOR AMERICA.**

**LET'S TAKE TIME AND GET THIS ONE RIGHT. FOR MORE INFORMATION,**

**WRITE TO: 818 CONNECTICUT AVE., N.W., 2ND FLOOR,**

**WASHINGTON, DC 20006.**

**202-628-5164**

## Leaders Reach Deal in Congress On D.C. Budget

DISTRICT, From A1

Del. Eleanor Holmes Norton (D-D.C.) said provisions under consideration yesterday that would have blocked efforts at management reform in the city had been eliminated from the bill. The legislation at one time also included a highly controversial school voucher provision—providing funds for poor students to pay private school tuition—that was deleted and will be voted on by the House at an unspecified date.

Norton noted that the budget bill, which was approved by the House late last night, ultimately had bipartisan support. She said the president would sign the measure this week, after it has been voted on by the Senate.

"I expect an instant signature," Norton said. "All of the red flag language is out of the bill. The District needs its bill out, and this is a fair bill. The real unfairness here has been in the delay that caused the District to borrow prematurely."

Rep. James P. Moran Jr. (Va.), the ranking Democrat on the House Appropriations subcommittee on the District, said Congress should have adopted the city's budget months ago, when it was submitted.

Rep. Charles H. Taylor (R-N.C.), the subcommittee's chairman, had proposed numerous changes that would have restricted the control board's flexibility on spending and prevented it from replacing the city's computerized financial management system. After Taylor refused to back down, House leaders took the unusual step of shifting authority over the bill to another Republican, Rep. Thomas M. Davis III (Va.), who worked with other legislators to reach a compromise.

Moran said the lengthy delay and disorderly process have convinced him that Congress should relinquish its authority to review the city's budget and leave fiscal decisions up to the control board and locally elected officials.

"This whole process makes a strong argument for abolishing the D.C. appropriations subcommittee," Moran said. "It is really thrilling to be the ranking Democrat, but I think the public would be better served if we abolished the whole subcommittee."

Davis said: "When appropriators look at the D.C. budget, a lot of things can happen. All of them bad."

The White House proposed eliminating the subcommittee and the annual congressional review of the city's budget as part of a District rescue package last summer. But congressional Republicans rejected the idea.

Yesterday, House leaders attempted to give Taylor a larger say in the final District budget bill by incorporating some provisions he had sought. For example, Taylor wanted to mandate that any savings from management reforms be dedicated to deficit reduction or local tax cuts. He also wanted to prevent the control board from spending interest earned on money in escrow accounts without congressional approval, a change Brimmer vigorously opposed.

Under a compromise, the control board will be required to report to Congress quarterly on its spending of non-appropriated funds but will be able to spend the money without legislative approval. One change favored by Taylor that was incorporated in the bill was an additional \$7 million in federal funds for the U.S. Park Police, who are providing helicopters and other assistance to the city's police department, congressional officials said.

A proposal that would have required the city's public school system to lease vacant buildings to new charter schools for \$1 a year was not included after Sen. Edward M. Kennedy (D-Mass.) objected. The proposal, designed to foster the establishment of charter schools, which operate outside the public school system's rules and bureaucracy, would have cost the school system tens of millions of dollars, Davis said.

District school officials want to sell vacant buildings to the highest bidder and then use the proceeds to repair school facilities that are in use. Davis said the bill does permit a \$5 million charter school building fund to carry funding over from one year to the next.

The bill also includes language, sought by the Justice Department, that would permit some retired federal employees to go to work for the D.C. government without giving up their federal pensions.

"It looks like we finally have completed work on a District of Columbia budget that will keep the management reform effort on track," said Sen. Lauch Faircloth (R-N.C.), chairman of the Senate Appropriations subcommittee on the District. "We have got a bill. Now, let's see some results."

Staff writer Debbi Wilgoren contributed to this report.

## Long Island Educator to Head Fairfax County Schools

SCHOOLS, From A1

and quit the post in September after the board declined to renew his contract. Spillane was admired by many parents, teachers and business leaders for making Fairfax schools more rigorous and innovative. But he lost the support of School Board members by launching initiatives without consulting them and by sometimes openly criticizing them.

Some community residents have said they are concerned that Domenech, known to be brash and confrontational at times, will have the same problems as Spillane in getting along with the School Board.

Domenech, however, in his appearances this week before groups of teachers, students, PTA officials, business leaders and other county residents, said he would be comfortable implementing the board's policies and seeking advice from all segments of the school community.

"I am not Bud Spillane," Domenech said after last night's vote. "Bud Spillane has a large pair of shoes and I do not intend to fill them—I intend

to bring my own. While I would certainly agree that we have similar management styles and philosophies, we have very different personalities. I think my personality will early on show those differences."

School Board Chairman Kristen J. Amundson (Mount Vernon) said Domenech "understands and respects the appropriate role of the School Board and the superintendent." She said the system needed a strong, take-charge leader.

"You cannot have at the helm of a system this large someone who wants to go around taking a poll before making a decision," Amundson said. "People had suggested that the board did not want someone strong. We did. Look who we brought in."

Domenech's supporters also said that he would be a charismatic leader and salesman for Fairfax schools, much like Spillane, and that he would be a role model for the growing number of Latino and immigrant students in the 150,000-pupil Fairfax school system. Domenech, who speaks fluent Spanish, moved to New

York from Cuba with his parents when he was 9, and he often describes himself as an example of the success American immigrants can achieve through education.

The four Republican board members said they backed Wilhoite because of her experience in running a medium-size school district, her innovative ideas and her reputation as a consensus-builder.

"I thought she could have been a unifying force—not just for this board but for the entire community," said board member Mychele B. Brickner (At Large).

Last night's divided vote reflected the deep philosophical disagreements on the elected School Board. The board's Democrats are generally satisfied with the county's teaching and curriculum programs, while the panel's Republicans want a more traditional curriculum and greater use of techniques such as phonics instruction in reading classes.

Among Domenech's innovations at South Huntington were alternative math courses and a special high school for dropouts and under-

achieving students. He also instituted mixed-age classrooms and day care for the children of high school students.

He became regional superintendent in Western Suffolk County in 1994. He left that job this summer to become an executive with Voyager Expanded Learning, a Dallas-based company that develops curriculum guides and other materials for after-school programs for elementary children.

In 1995, Domenech, along with Spillane, was a finalist for the New York City superintendent's job. The New York school board chose Domenech, but the offer was rescinded a day later after Mayor Rudolph Giuliani said Domenech was unacceptable because he would not promise to make deep cuts in the city's school budget.

Domenech was a finalist for the Los Angeles school superintendent job last spring. He is president-elect of the American Association of School Administrators.

A 1967 graduate of Hunter College in New York, he received his doctor-



DANIEL A. DOMENECH  
... "I'm absolutely thrilled"

ate in education research from Hofstra University in 1977. He and his wife, Lori, have a child in kindergarten, and Domenech has three children—two of them grown and one a high school senior—from a previous marriage.



## The Only Thing This Treaty Cools Down Is America's Economy.

**This could really hurt.**

On December 1st there will be a United Nations meeting in Kyoto, Japan. The U.S. will be asked to sign a global climate treaty that could increase our energy costs by 20% or more. According to independent economic analysts we could pay 50 cents more for every gallon of gasoline and 25 to 50% more for electricity and natural gas.

Higher energy prices mean higher costs for manufacturing, farming, and transportation. American goods would be more expensive, here and abroad. This treaty could make us less competitive in the global economy and cost America jobs.

**If it's not global, it won't work.**

If they get their way, countries responsible for almost half the world's greenhouse gas emissions won't cut back on energy use at all. 134 of 168 countries, including China, India and Mexico, would be entirely exempt. So we'll pay the price for reducing emissions while countries with rapidly growing economies get a free ride.

That won't help the environment, but it will hurt America's economy.

**Mr. President, don't sign a treaty that hurts our economy.**

The U.S. doesn't have to rush into signing this treaty. We can continue negotiations, and come up with an agreement that requires the whole world to be involved and doesn't hurt our economy.

To get more information and find out how you can get involved, call toll free or log on today:

**1-888-54 FACTS**  
**www.climatefacts.org**

Paid for by: A. Philip Randolph Institute, American Automobile Manufacturers Association, American Corn Growers Association, American Farm Bureau Federation, American International Automobile Dealers Association, American Iron and Steel Institute, American Petroleum Institute, American Plastics Council, The American Portland Cement Alliance, American Sheep Industry Association, American Trucking Associations, Association of American Railroads, The Center for Energy and Economic Development, Chemical Manufacturers Association, Coalition for Vehicle Choice, Edison Electric Institute, The Fertilizer Institute, Global Climate Coalition, National Association of Farmer Elected Committeemen, National Association of Manufacturers, National Automobile Dealers Association, National Black Chamber of Commerce, Inc., The National Cattlemen's Beef Association, National Farmers Union, National Grange, National Mining Association, National Rural Electric Cooperative Association, The Seniors Coalition, The Small Business Survival Committee, Texas Conference of Black Mayors, Inc., United Brotherhood of Carpenters, AFL-CIO, United Mine Workers of America, AFL-CIO, United States Hispanic Chamber of Commerce, United Transportation Union, AFL-CIO, U.S. Chamber of Commerce

# Yeltsin Fires 2 More Chubais Aides, Dealing Further Blow to Economic Reform

By David Hoffman  
Washington Post Foreign Service

**YEKATERINBURG, Russia, Nov. 15**—President Boris Yeltsin fired two more top aides to Deputy Prime Minister Anatoly Chubais today but refused to accept Chubais's resignation, leaving Russia's leading economic reformer still in office but dealing a major setback to the prospects for further liberalization of Russia's economy.

Chubais survived because Russia's economy is fragile, its capital markets severely weakened by recent global economic turmoil, analysts said. The Interfax news agency quoted a Kremlin official as saying that Chubais was not dismissed because of "an extremely critical social and economic situation in Russia."

But the dismissal of two of his top aides, coupled with two earlier firings, raised questions about how effective Chubais will be in the future. "It's very bad," said Alexander Oslon, a pollster who has worked closely with Chubais. "Even if Chubais stays, it will be a different Chubais. It will be a Chubais without a team, a weaker Chubais. This Chubais will be less capable of achieving his goals."

Yeltsin fired the federal privatization chief, Maxim Boiko, and the head of Russia's bankruptcy commission, Pyotr Mostovoi, both close Chubais allies. On Friday, he dumped Alexan-

der Kazakov, a Chubais lieutenant who was deputy Kremlin chief of staff. In August, Alfred Kokh, then privatization boss, also was forced out.

The firings followed disclosure earlier this week that Chubais and several co-authors—including Boiko, Mostovoi and Kazakov—had received payments of \$90,000 each for a book on the history of Russia's massive privatization of state assets. Chubais acknowledged the payment was large and said most of the money was to be donated to a foundation overseen by Yegor Gaidar, a former prime minister and fellow free-market reformer. But the uproar grew more intense because the source of the payments appears to be one of the most influential and wealthy of the Russian tycoons who have been feuding with each other and Chubais in recent months.

According to Russian news reports, Yeltsin telephoned Chubais and warned him to avoid such transactions in the future, but refused to accept his resignation.

Chubais is one of the few real survivors of the rough-and-tumble of Russian domestic politics. He has served almost continuously in Yeltsin's governments since the new Russian state was born in 1992 out of the Soviet collapse. He was fired in early 1996, then brought back a few months later as a result of a strong push by some



FILE PHOTO/REUTERS  
His aides' dismissal could weaken Anatoly Chubais, a top reformer.



FILE PHOTO/ASSOCIATED PRESS  
Privatization chief Maxim Boiko was fired in a growing book-fee scandal.

politically well-connected business magnates.

Since March, he and Boris Nemtsov, both first deputy prime ministers, have taken the lead on Russian economic and domestic policy and have often been described, inside and outside Russia, as running the most reform-minded government since Gaidar's in 1992. Now, hopes that Chubais and Nemtsov could score major gains in

their drive to reshape Russia's economy have been dimmed, at best.

Chubais always has been surrounded by a coterie of extremely loyal aides, and Yeltsin's latest action all but strips him of his high command. Although he has long been unpopular in the eyes of the public, he remained strong inside government because of his skills as a bureaucratic fighter.

"These dismissals are a blow to

Chubais and his team," said Lilia Shevtsova, an analyst with the Carnegie Endowment for International Peace in Moscow. "Clearly, it will be very difficult for Chubais to restore the former balance. His loneliness and political isolation are obvious."

The firings had their origins in an intense battle last summer for 25 percent of Svyazinvest, a telephone holding company put up for auction. The winning bid went to Vladimir Potanin, whose Uneximbank is one of Russia's largest private banks. His victory enraged the losing bidders, led by Vladimir Gusinsky, head of the Media-Most group, who alleged collusion between the government and Potanin.

The outcome of the Svyazinvest deal touched off an acrid fight between the tycoons, with some of them pitted against Chubais. Each side used its allies in the news media to sling mud at the other in leaked documents and smear campaigns.

"Nobody has the right to compromise the president, the government and the reform program itself," Prime Minister Viktor Chernomyrdin said after the sackings. Alexander Shokhin, leader of the pro-government faction in the lower house of parliament, the State Duma, said the scandal "doesn't increase the government's prestige."

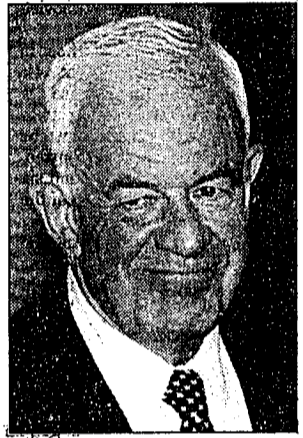
Chubais and his team have claimed the attacks were motivated by the dissatisfied financial clans. "The differ-

ent political forces involved in the attacks on Chubais understood that this is a team which is preventing stealing public money and stops unfair rules of the game," said Leonid Gorkov, a Moscow State University political psychology professor who has been close to Chubais and Gaidar.

Analysts said the impact on Russia's hopes for economic recovery could be significant. Investors in recent weeks have been losing confidence in Russia and fleeing for more stable, developed markets. The full impact of the capital flight has not yet been measured because it takes several weeks for stock market trades to be cleared through Russia's system. The wounding of Chubais—a favorite of Western financial institutions—could further rattle investors.

Moreover, many of Chubais and Nemtsov's goals have been frustrated because of a lack of support in parliament. They have put off plans for a new tax code until next year. And a series of important oil company privatizations now might be delayed as a new boss takes over from Boiko.

Chubais and Nemtsov have claimed they are champions of a new, more transparent form of Russian capitalism, opposed to the corrupt oligarchy that has been taking root here. One possible outcome of the latest firings is that some tycoons will try to again change the rules to favor their own interests.



BY MAKIKAZU OGINUMA—ASSOCIATED PRESS  
Former House speaker Thomas S. Foley has visited Japan many times.

## Japanese Welcome New U.S. Envoy

### Foley's Arrival Ends 11-Month Vacancy

By Kevin Sullivan  
Washington Post Foreign Service

**TOKYO, Nov. 15**—Former U.S. House Speaker Thomas S. Foley arrived here today as the new U.S. ambassador to Japan, following the longest vacancy in that job since World War II.

Foley, 68, replaces former ambassador Walter F. Mondale, who left Japan 11 months ago.

Foley arrives at a time of relative harmony in U.S.-Japan relations. While many trade disputes in areas such as aviation continue to strain relations, the two nations recently completed a successful renegotiation of their bilateral security agreement. That pact, pressed by President Clinton and Prime Minister Ryutaro Hashimoto, expands Japan's responsibilities to assist the United States in the event of military conflicts in East Asia.

Things are less harmonious in Japan's economy. Economic crises that have plagued many Asian nations in recent months have taken their toll on Japan, which saw its stock market plunge Friday to its lowest point in two years. Japanese banks are burdened with bad debt, and corporate bankruptcies are at record levels.

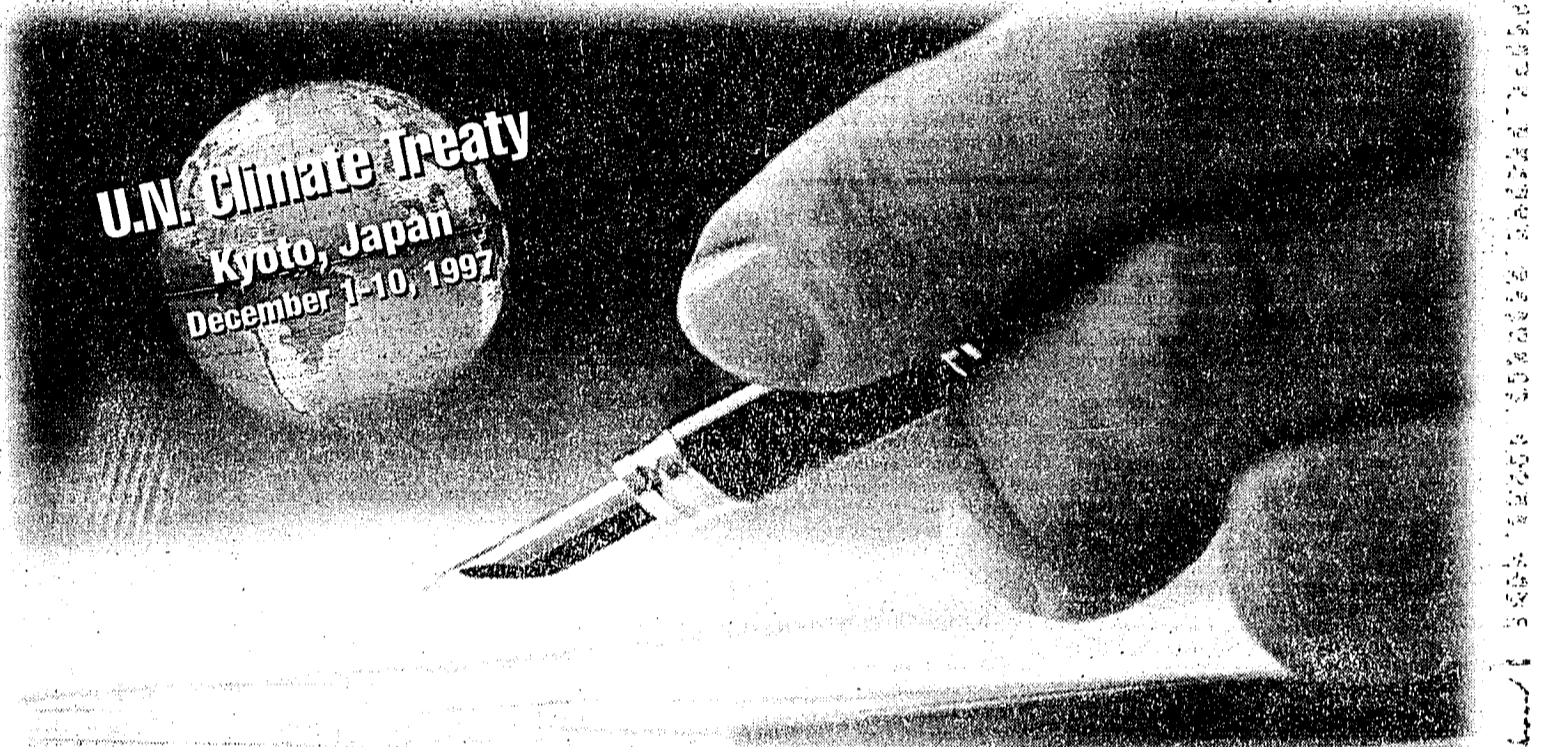
While Foley will not have to grapple with those issues, he will be pressing the United States' interests while the Japanese government is preoccupied with domestic problems.

Foley, who has visited Japan many times, has been criticized by some, especially those in the U.S. business community here, as an apologist for Japan. Critics note that Foley was recently given one of Japan's highest awards, one given to few foreigners. They argue that he is the wrong person to be pushing Japan on prickly trade matters.

However, the American Chamber of Commerce in Japan issued a statement recently welcoming Foley. It said the group is confident that Foley will display "a strong commitment to support the efforts of American business... in the dynamic Japanese market."

Arriving at Tokyo's Narita Airport, Foley addressed a large gathering of Japanese reporters.

"Whatever field we consider—trade, security, research and technology, the sciences, the environment, education or economic development—there is, indeed, no cooperative, bilateral partnership more important than that between the United States and Japan," he said. "Our partnership is the key to a peaceful and prosperous 21st century in Asia and the rest of the world."



# The Only Thing This Treaty Cools Down Is America's Economy.

**This could really hurt.**

On December 1st there will be a United Nations meeting in Kyoto, Japan. The U.S. will be asked to sign a global climate treaty that could increase our energy costs by 20% or more. According to independent economic analysts we could pay 50 cents more for every gallon of gasoline and 25 to 50% more for electricity and natural gas.

Higher energy prices mean higher costs for manufacturing, farming, and transportation. American goods would be more expensive, here and abroad. This treaty could make us less competitive in the global economy and cost America jobs.

**If it's not global, it won't work.**

If they get their way, countries responsible for almost half the world's greenhouse gas emissions won't cut back on energy use at all. 134 of 168 countries, including China, India and Mexico, would be entirely exempt. So we'll pay the price for reducing emissions while countries with rapidly growing economies get a free ride.

That won't help the environment, but it will hurt America's economy.

**Mr. President, don't sign a treaty that hurts our economy.**

The U.S. doesn't have to rush into signing this treaty. We can continue negotiations, and come up with an agreement that requires the whole world to be involved and doesn't hurt our economy.

To get more information and find out how you can get involved, call toll free or log on today:

**1-888-54 FACTS**  
**www.climatefacts.org**

Partly by: A. Philip Randolph Institute, American Automobile Manufacturers Association, American Corn Growers Association, American Farm Bureau Federation, American International Automobile Dealers Association, American Iron and Steel Institute, American Petroleum Institute, American Plastics Council, The American Portland Cement Alliance, American Sheep Industry Association, American Trucking Associations, Association of American Railroads, The Center for Energy and Economic Development, Chemical Manufacturers Association, Coalition for Vehicle Choice, Eastern Electric Institute, The Fertilizer Institute, Global Climate Coalition, National Association of Farmer Elected Committeemen, National Association of Manufacturers, National Automobile Dealers Association, National Black Chamber of Commerce, Inc., The National Cattlemen's Beef Association, National Farmers Union, National Gun Owners' National Mining Association, National Rural Electric Cooperative Association, The Service Center, The Small Business Survival Committee, Texas Conference of Business Leaders, Inc., United Brotherhood of Carpenters, AFL-CIO, United Mine Workers of America, AFL-CIO, United States Hispanic Chamber of Commerce, United Transportation Union, AFL-CIO, U.S. Chamber of Commerce

# Critics Cite Dangers of Multiple Births

FERTILITY, From A1

They said, the prudent move would have been to withhold addition of the husband's sperm and try again in another month or two, when a more modest number of eggs could be produced.

"Here we had a nice ending," said Mark Sauer, chief of reproductive endocrinology at Columbia-Presbyterian Medical Center in New York. "However, if she would have died or the babies had lifelong problems with cerebral palsy or some other complications, it would be a nightmare. Even now, with the potential for psychosocial problems, it may still become a nightmare. And society certainly has the right to ask why did this happen and were there alternatives."

Roger Kempers, medical director of the American Society for Reproductive Medicine in Birmingham, said the society's guidelines call for doctors to avoid large-scale multiple births. One problem is that ovarian overstimulation can cause swelling and bleeding of the ovaries and severe fluid retention that can lead in rare cases to heart failure.

Women carrying multiple fetuses also are at risk for potentially fatal blood clots and other complications during pregnancy and delivery, and the children often require expensive follow-up care for many years. A set of Indiana sextuplets born in 1993 required three years of state-funded special care, for example, and several sextuplets born last year in Albany, N.Y., have serious medical problems, including one case of partial blindness.

Kempers said Germany recently passed legislation prohibiting doctors from using a common fertility technique to create more than three offspring per mother. But he said there are many ways to avoid multiple births without legislation and without having to resort to aborting one or several of the fetuses—an option the McCaugheys said they opposed on religious grounds.

"We think it's better if we can self-regulate this rather than having the federal government coming in," Kempers said.

Other experts said they were concerned that if fertility specialists do not rein themselves in, their credibility as advocates for their patients will plummet and the profession may find itself the subject of congressional attention.

Reproductive medicine is unregulated in this country, in large part because the government, under pressure from opponents of abortion, has banned the federal funding of research involving human embryos. That ban has meant that fertility research has been conducted primarily at independent, profit-seeking clinics instead of by federal researchers, whose proposed experiments must first pass muster with scientific and ethical review boards.

"By and large, infertility treatment in this country has grown up as an entrepreneurial field rather than as a scientific field, so many of the things doctors are doing in the way of fertility treatments have not met the same standards of scientific scrutiny that we think," said Thomas Murray, director of the Center for Biomedical Ethics at Case Western Reserve University.

Murray said he was gratified that the McCaughey children are doing well, however, and does not begrudge the parents' decision to carry all seven fetuses to term.

Like most women, Bobbi McCaughey was born with ovaries full of immature eggs. But the pituitary gland in her brain produces too little of a substance called follicle stimulating hormone (FSH), which normally spurs a few of those eggs to mature each month.

Her doctors prescribed a drug called Metrodin, rich in that key hormone. It is made from urine collected daily from 100,000 postmenopausal women in Europe. (Postmenopausal women produce only small amounts of estrogen, which normally suppresses the production of FSH, so their urine is rich in the egg-maturing hormone.)

Typically doctors track the egg maturation process in fertility patients with ultrasound imaging, which allows them to see the small eruptions that develop on the surface of the ovaries as eggs mature. When three or four or more are ripe, doctors give an injection of another hormone, human chorionic gonadotropin (HCG), to release those eggs from their ovarian nests and make them available to sperm, which are injected into the vicinity with a syringe or through intercourse.

Sauer said it would have been obvious that McCaughey's ovaries had overreacted to the drug. "She must have had a dozen or more eggs going, and if she was being monitored correctly, they had to know she was grossly overstimulated before she got her HCG shot," he said. "That's not even a borderline call; it's a cavalier decision to give a woman like that a shot of HCG. If we see more than four or five, we cancel those cycles."

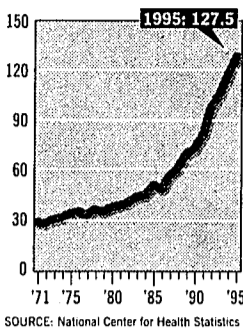
It was not clear yesterday whether Hauser was aware of the number of stimulated eggs and, if so, whether she had considered canceling the fertility cycle. She said she had treated hundreds of patients with the drug in the past 18 years and no mother had given birth to more than triplets.

Canceling a treatment cycle means the patient is out several thousand dollars, and sometimes women insist on going forward. "There's a tremendous pressure to deliver the goods, but doctors have to draw the line," Sauer said. Otherwise, "you get the backlash. Peo-

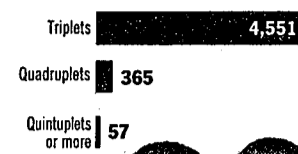
## SPECIAL DELIVERIES

Though fertility treatments have rapidly boosted the number of higher-order multiple births, they remain rare. In 1995, 2.6 percent of births were of more than one baby—but only one in 1,000 were of triplets or more.

Triplets and higher-order births per 100,000 live births



Of the 3.9 million live births in the U.S. in 1995:



THE WASHINGTON POST

ple say. "Those damn fertility doctors. What won't they do?"

"You can never have perfect control" over the number of eggs produced by fertility treatments, said Richard Paulson, director of the division of reproductive endocrinology and infertility at the University of Southern California. But overstimulation can be avoided, he said, by using a less potent drug called clomiphene, which has the drawback of

lower success rates, or in some cases by giving Metrodin in "low, slow doses."

In the December issue of *Fertility and Sterility*, Paulson and his colleagues describe a new method of egg stimulation and retrieval that helps limit the number of eggs released.

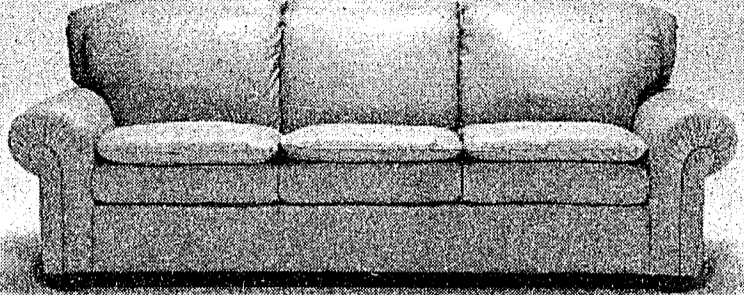
Staff writer Sue Anne Pressley contributed to this report.

**Fireplace Glass Doors**  
From the Fireplace People  
2821 Main St. Falls Church, VA (703) 207-4900  
11720 Parkside Dr. Rockville, MD (301) 209-4100  
**BROMWELLS**  
CUSTOM & STOCK • IMMEDIATE DELIVERY

**Music Box Center**  
36th Anniversary Sale - Up To 30% Discount!  
Choice of 300 Melodies and 1300 Styles.  
918 F ST., N.W. (Nat'l. Union Bldg.)  
(202) 783-9399

**SHIP'S HATCH**  
THE UNDERGROUND  
Arlington, VA (703) 413-NAVY  
10376 Main St., Fairfax, VA (703) 691-1670  
• USN Ship Ball Caps  
• Ship's Wheels & Bells  
• Nautical & Military Gifts  
• Lamps & Lanterns  
• Ships Clocks

Meet The Manufacturer. Only We Give You 35,000 Choices, The Best Quality And Two Weeks Delivery!



The Lexington

SHOWROOMS #75 & #76  
**OPENING TOMORROW!**

Leather Center is America's No. 1 Manufacturer/retailer of fine leather furniture. No One Beats Our...

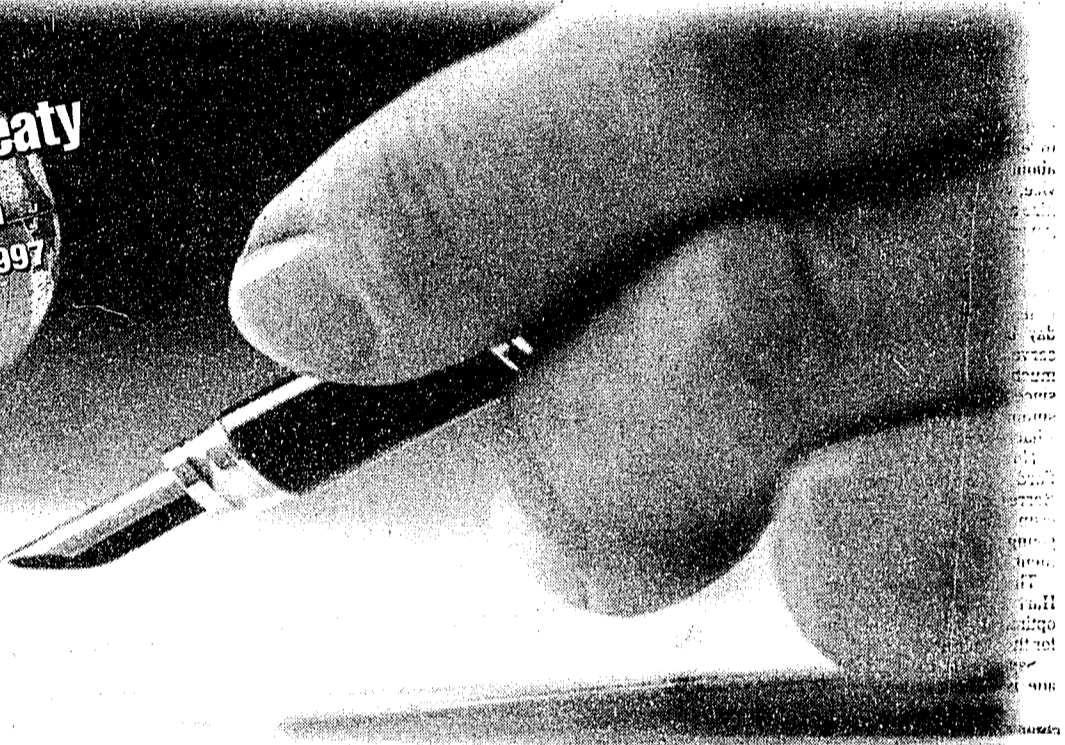
- 50 Furniture styles, 70 Colors and 10 Leather Grades
- Handcrafted To Order Service
- 100% Full Top-Grain Premium Leathers
- Limited Lifetime Guarantee
- Two Week Delivery

**LEATHER CENTER**  
No. 1 In Leather Seating!

Annapolis • 2315-D Forest Dr. • 410.897.9414

Kensington • 5200 Nicholson Lane • 301.231.7301

**U.N. Climate Treaty**  
Kyoto, Japan  
December 1-10, 1997



# The Only Thing This Treaty Cools Down Is America's Economy.

**This could really hurt.**

On December 1st there will be a United Nations meeting in Kyoto, Japan. The U.S. will be asked to sign a global climate treaty that could increase our energy costs by 20% or more. According to independent economic analysts we could pay 50 cents more for every gallon of gasoline and 25 to 50% more for electricity and natural gas.

Higher energy prices mean higher costs for manufacturing, farming, and transportation. American goods would be more expensive, here and abroad. This treaty could make us less competitive in the global economy and cost America jobs.

**If it's not global, it won't work.**

If they get their way, countries responsible for almost half the world's greenhouse gas emissions won't cut back on energy use at all. 134 of 168 countries, including China, India and Mexico, would be entirely exempt. So we'll pay the price for reducing emissions while countries with rapidly growing economies get a free ride.

That won't help the environment, but it will hurt America's economy.

**Mr. President, don't sign a treaty that hurts our economy.**

The U.S. doesn't have to rush into signing this treaty. We can continue negotiations, and come up with an agreement that requires the whole world to be involved and doesn't hurt our economy.

To get more information and find out how you can get involved, call toll free or log on today:

**1-888-54 FACTS**  
[www.climatefacts.org](http://www.climatefacts.org)

Paid for by: A. Philip Randolph Institute, American Automobile Manufacturers Association, American Corn Growers Association, American Farm Bureau Federation, American International Automobile Dealers Association, American Iron and Steel Institute, American Petroleum Institute, American Plastics Council, The American Portland Cement Alliance, American Sheep Industry Association, American Trucking Associations, Association of American Railroads, The Center for Energy and Economic Development, Chemical Manufacturers Association, Coalition for Vehicle Choice, Edison Electric Institute, The Fertilizer Institute, Global Climate Coalition, National Association of Farmer Elected Committeemen, National Association of Manufacturers, National Automobile Dealers Association, National Black Chamber of Commerce, Inc., The National Cattlemen's Beef Association, National Farmers Union, National Grange, National Mining Association, National Rural Electric Cooperative Association, The Seniors Coalition, The Small Business Survival Committee, Texas Conference of Black Mayors, Inc., United Brotherhood of Carpenters, AFL-CIO, United Mine Workers of America, AFL-CIO, United States Hispanic Chamber of Commerce, United Transportation Union, AFL-CIO, U.S. Chamber of Commerce



# Crisis Wounds S. Koreans' National Pride

News of IMF Bailout Plan Shocks, Saddens People Who Were Accustomed to Prosperity

By Kevin Sullivan  
Washington Post Foreign Service

SEOUL, Nov. 22—All over this city today, cranes were busy swinging bright-orange steel girders into place over the skeletons of new office buildings. An army of construction workers in hard hats spent their day hammering away on an extension of Seoul's subway system, while South Korean yuppies in \$150 jeans whiled away the afternoon sipping espresso and chatting on their cell phones in trendy downtown coffee shops.

It still looked like the old South Korea, the Asian Tiger where there never seemed to be enough cement and steel to satisfy the construction juggernaut, or enough designer gaudies to satisfy the newly rich.

But everything was different today. South Koreans awoke to the news that the national economy is so badly crippled that the government is asking for a \$20 billion bailout from the International Monetary Fund. President Kim Young Sam went on national television to acknowledge that the economy needs major restructuring and that all South Koreans should get ready for a dose of "bone-aching pain." The South Korean stock market closed down 4 percent today.

The response throughout the nation was shock and anger. Until hours before it asked for the bailout, the government had been insisting the funds would not be needed. But for many people, the overwhelming reaction to the news was sadness, tinged with a touch of shame.

"We thought we were rich, and that's not true," said H.S. Paek, who runs an antiques shop in Seoul's Itaewon market district. "We have to change our thinking. It is too early for us to act like rich people."

Few countries have a deeper—or more easily bruised—sense of national pride than South Korea. Many here had come to regard the national economy as invincible, and the idea that it needs a bailout is humiliating. Despite the splashy displays of Christmas lights blinking happily on Seoul's glitzy department stores, Seoul was a dark place today.

The mood changed virtually overnight. Following Friday's IMF announcement, a South Korean television network devoted a lengthy portion of its evening programming to explaining how the financial crisis had happened and what might be expected in the future.

"Last week people didn't know anything about the IMF, they didn't know anything about the dollar, but now they see this is a big problem," said Kang Jin, who also owns an antiques shop in Itaewon. "Our country is bankrupt. It's crazy."

The economic crisis comes less than a month before the Dec. 18 presidential election. Until now, the

three main candidates had barely discussed the economic crisis. Nobody wanted to break the bad news. But now that it is out, the issue is expected to dominate the rest of the campaign. Analysts said it is too soon to tell if any of the candidates will benefit politically.

South Korea also is preparing to begin peace talks with North Korea, with the United States and China also participating. South Korea's trump card with the Stalinist North always has been its booming economy. Admitting its woes to its arch-rival in the North will be humiliating. And many here say the situation could pose a military threat: If North Korea senses that the South is weakened, it might be tempted into military provocations.

South Korea is in for some serious belt-tightening. Already the country has experienced a record string of bankruptcies, and many fear the worst is yet to come. As the government and industry are restructured, South Korean workers likely will face layoffs—something that has been virtually unheard of here. When that happens, powerful trade unions are likely to strike, causing further turmoil.

Average people already have shown their willingness to cut back on foreign goods, which have become a symbol of excess. Paek, the shop owner, said that from the government to industry to individuals, too many South Koreans have been spending beyond their means. Much is unnecessary, be it massive public works projects designed to flaunt South Korea's economic muscle, or cell phones and designer clothes that cost young South Koreans most of their income, Paek said.

"They were trying to do everything quickly; they wanted to show everyone what they had," Paek said. "But if you are rich and smart and good, you don't have to be showy. Everyone will know." In his somber speech this morning, Kim asked businesses to curb borrowing and workers to forgo pay raises. He said the nation must respond by "tightening our belts once again and sharing pain, rather than blaming others or demanding responsibility."

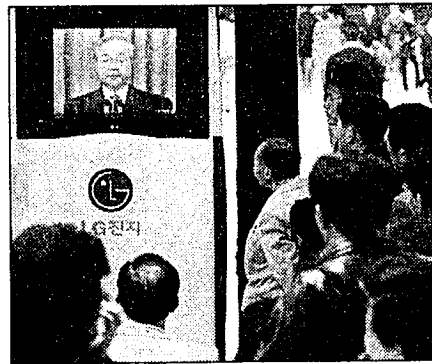
But perhaps nothing that Kim said struck home more than the warning "The world is watching every move we make." People here are intensely concerned about how they are viewed by the outside world. In the past two years, the government has threatened legal action against at least two major

U.S. newspapers over relatively minor errors. In recent weeks, a top government official has written to several Western newspapers complaining that news stories about the South Korean economy were unfairly pessimistic, stories that now have been proven essentially correct.

Certainly, South Korea is a long way from ruin. The economy is far larger than the ailing economies in Thailand and Indonesia. And analysts say the South Korean economy has strong fundamental underpinnings: Economists still predict at least 6 percent annual growth for the next few years.

The economic troubles have had their silver linings, too—perhaps the most visible has been the somewhat incongruous presence in Seoul this week of American pop star Michael Jackson. Only a couple of years ago, the South Korean government banned Jackson from performing here, saying allegations of child molestation against the singer made him a less than positive influence on South Korean youth.

But this week, Jackson reportedly has been negotiating to buy a \$1 billion ski resort from an ailing South Korean company. Not only is Jackson now a welcome investor, but he was pictured on the front page of a newspaper this



BY AHN YOUNG JOON—ASSOCIATED PRESS

South Koreans watch an address by President Kim Young Sam who apologized for economic crisis and warned of the prospect of "bone-aching" pain.

morning in a warm embrace with presidential candidate Kim Dae Jung. Jackson said he admired Kim's long struggle to promote democracy in South Korea. Even Jackson's hotel bill was news this week: according to the Korea Herald, Jackson and his entourage spent \$9,700 for a one-day stay at Seoul's Shilla Hotel.

The devalued South Korean currency, the won, has brought bargain hunters to Seoul. All flights from Tokyo to Seoul today were booked; Monday is a holiday in Japan, and some people were coming to Seoul for a long weekend of shopping.

Airport currency-exchange counters were so busy that clerks had prepared stacks of envelopes filled with won, ready for customers eager to trade in dollars or yen. Hand over \$100, get an envelope immediately. Hand

over 20,000 Japanese yen, get an envelope from a different stack.

Jerome Ducanois, a currency trader for Lehman Brothers Inc. in Tokyo, said he and a friend planned to fly to Seoul to stock up on snowboarding gear. They had planned to buy their equipment in the United States to go snowboarding on a Japanese mountain, but the devalued won made South Korea too attractive to pass up, even with the cost of the flight to Seoul figured in.

But that's small comfort to most South Koreans.

"I am so mad about what happened to our economy that I want to kick those responsible in the groin," said businessman Lee Moon Hee told the Associated Press today, jerking his right foot into the air.



## Bosnian Serb Parliamentary Vote Begins

By Lee Hockstader  
Washington Post Foreign Service

PALE, Bosnia, Nov. 22—Under raw, rainy skies, hundreds of thousands of Bosnian Serbs voted today in parliamentary elections that the West hopes will loosen the stranglehold on power exercised by unyielding nationalists.

The elections for a new 83-member parliament for the Serb-controlled part of Bosnia are being closely watched in Washington and European capitals, which have accused hard-line Bosnian Serbs of blocking their attempts to consolidate the peace here. The hard-liners in the Serbian Democratic Party (SDS) are loyal to former Bosnian Serb president Radovan Karadzic, who is under indictment for war crimes for his role in the 1992-95 war in Bosnia.

If the hard-liners fare well in the voting today and Sunday, it would deal a serious blow to Western policy in the region. The Organization for Security and Cooperation in Europe, which is running the elections, expects to announce results in mid-December.

Here in Pale, where Karadzic lives, the hard-liners were expected to do well. "Everyone is voting for the SDS," said a young man who voted this morning, referring to Karadzic's party. "Either them or the Radicals." The Serbian Radical Party is an ideological ally of the SDS.

The elections were called last summer after Bosnian Serb President Biljana Plavsic broke with Karadzic and dissolved the hard-line parliament.

Determined to weaken Karadzic and his allies, the West channeled money and advice to Plavsic, who has expressed support for the U.S.-brokered peace process.

NATO troops also have shut down the main television transmitters used by the hard-liners and helped to wrest a number of local police stations from Karadzic's control.

"I expect our people to vote this time for those who are able to provide them with a better standard of living and, of course, a better future," Plavsic said after voting in the northwestern town of Banja Luka.

# The Only Thing This Treaty Cools Down Is America's Economy.

**This could really hurt.**

On December 1st there will be a United Nations meeting in Kyoto, Japan. The U.S. will be asked to sign a global climate treaty that could increase our energy costs by 20% or more. According to independent economic analysts we could pay 50 cents more for every gallon of gasoline and 25 to 50% more for electricity and natural gas.

Higher energy prices mean higher costs for manufacturing, farming, and transportation. American goods would be more expensive, here and abroad. This treaty could make us less competitive in the global economy and cost America jobs.

**If it's not global, it won't work.**

If they get their way, countries responsible for almost half the world's greenhouse gas emissions won't cut back on energy use at all. 134 of 168 countries, including China, India and Mexico, would be entirely exempt. So we'll pay the price for reducing emissions while countries with rapidly growing economies get a free ride.

That won't help the environment, but it will hurt America's economy.

**Mr. President, don't sign a treaty that hurts our economy.**

The U.S. doesn't have to rush into signing this treaty. We can continue negotiations, and come up with an agreement that requires the whole world to be involved and doesn't hurt our economy.

To get more information and find out how you can get involved, call toll free or log on today:

**1-888-54 FACTS**  
**www.climatefacts.org**

Paid for by: A. Philip Randolph Institute, American Automobile Manufacturers Association, American Corn Growers Association, American Farm Bureau Federation, American International Automobile Dealers Association, American Iron and Steel Institute, American Petroleum Institute, American Plastics Council, The American Portland Cement Alliance, American Sheep Industry Association, American Trucking Associations, Association of American Railroads, The Center for Energy and Economic Development, Chemical Manufacturers Association, Coalition for Vehicle Choice, Edison Electric Institute, The Fertilizer Institute, Global Climate Coalition, National Association of Farmer Elected Committeemen, National Association of Manufacturers, National Automobile Dealers Association, National Black Chamber of Commerce, Inc., The National Cattlemen's Beef Association, National Farmers Union, National Grange, National Mining Association, National Rural Electric Cooperative Association, The Seniors Coalition, The Small Business Survival Committee, Texas Conference of Black Mayors, Inc., United Brotherhood of Carpenters, AFL-CIO, United Mine Workers of America, AFL-CIO, United States Hispanic Chamber of Commerce, United Transportation Union, AFL-CIO, U.S. Chamber of Commerce