



IOWA

STATE REPORT | 07.26.2020

SUMMARY

- Iowa is in the red zone for cases, indicating more than 100 new cases per 100,000 population last week, and the yellow zone for test positivity, indicating a rate between 5% to 10%.
- Iowa has seen stability in new cases and an increase in testing positivity over the past week.
- The following three counties had the highest number of new cases over the past 3 weeks: 1. Polk County, 2. Scott County, and 3. Dubuque County. These counties represent 36.9 percent of new cases in Iowa.
- Iowa had 106 new cases per 100,000 population in the past week, compared to a national average of 140 per 100,000.
- The federal government has deployed the following staff as assets to support the state response: 14 to support medical activities from VA.
- During Jul 18 - Jul 24, on average, 30 patients with confirmed COVID-19 and 28 patients with suspected COVID-19 were reported as newly admitted each day to hospitals in Iowa. An average of 84 percent of hospitals reported each day during this period; therefore, this may be an underestimate of the actual total number of COVID-related hospitalizations. Underreporting may lead to a lower allocation of critical supplies.*

RECOMMENDATIONS

- Continue to promote social distancing and wearing of cloth face masks when outside the home, especially in indoor environments and in counties with high (>100 cases/100K population) or increasing case rates.
- Protect those in nursing homes and long-term care facilities by testing all staff each week and requiring staff to wear face masks while on duty.
- Continue to identify and aggressively investigate outbreaks early, especially in localities with increasing transmission and large populations. Intensify contact tracing, quarantine of contacts, and isolation for documented or suspected cases.
- Meatpacking plants and other crowded workplaces should ensure social distancing, the wearing of face masks, and regular testing. Workplaces should implement clear protocols for early and thorough case investigations and contact tracing.
- Increase volume of testing and move to community-led testing in localities with elevated or increasing transmission. Consider pooled testing as directed below to increase access and reduce turnaround times.
- In localities with 7-day average test positivity greater than 10%, close bars and gyms, require strict social distancing in restaurants (restrict indoor dining and promote outdoor dining), and restrict gatherings to fewer than 10 people.
- Specific, detailed guidance on community mitigation measures can be found on the [CDC website](#).

The purpose of this report is to develop a shared understanding of the current status of the pandemic at the national, regional, state and local levels. We recognize that data at the state level may differ from that available at the federal level. Our objective is to use consistent data sources and methods that allow for comparisons to be made across localities. We appreciate your continued support in identifying data discrepancies and improving data completeness and sharing across systems. We look forward to your feedback.

** This figure may differ from state data due to differences in hospital lists between federal and state systems or inclusion of hospitals that are not admitting COVID-19 patients. We are working to incorporate feedback on an ongoing basis to update these figures. These data exclude psychiatric, rehabilitation, and religious non-medical hospitals.*



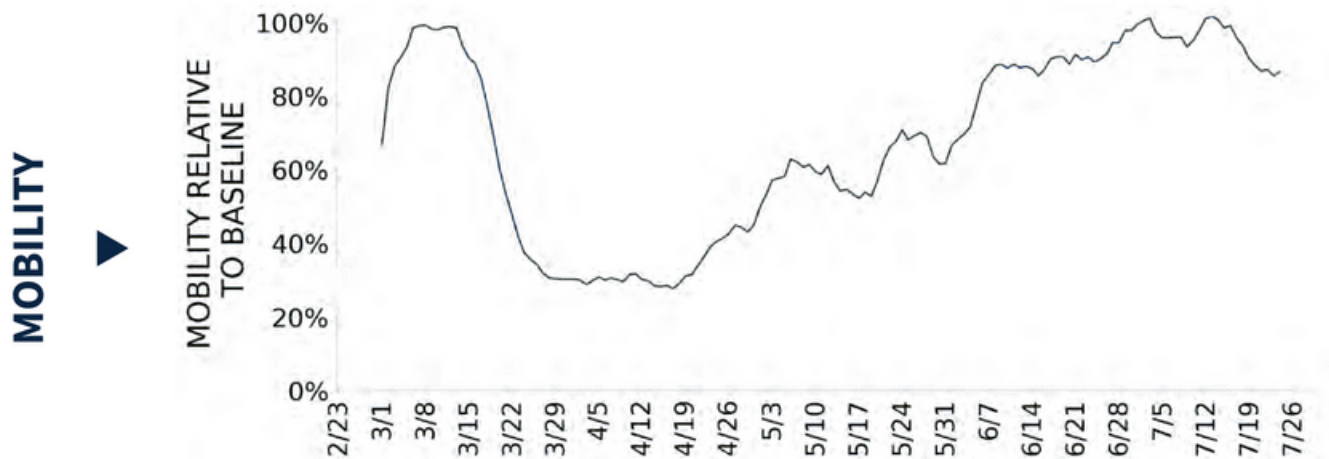
COVID-19



IOWA

STATE REPORT | 07.26.2020

	STATE, LAST WEEK	STATE, % CHANGE FROM PREVIOUS WEEK	FEMA/HHS REGION, LAST WEEK	UNITED STATES, LAST WEEK
NEW CASES (RATE PER 100,000)	3,330 (106)	-8.9%	16,495 (117)	460,137 (140)
DIAGNOSTIC TEST POSITIVITY RATE	6.9%	-0.3%*	8.2%	8.5%
TOTAL DIAGNOSTIC TESTS (TESTS PER 100,000)	63,686** (2,019)	-0.5%**	201,537** (1,425)	5,437,404** (1,657)
COVID DEATHS (RATE PER 100,000)	38 (1)	-2.6%	141 (1)	6,434 (2)
SNFs WITH AT LEAST ONE COVID-19 CASE	4.7%	+1.1%*	5.2%	12.1%



* Indicates absolute change in percentage points.

** Due to delayed reporting, this figure may underestimate total diagnostic tests and week-on-week changes in diagnostic tests.

DATA SOURCES

Cases and Deaths: State values are calculated by aggregating county-level data from USAFacts; therefore, the values may not match those reported directly by the state. Data is through 7/24/2020; last week is 7/18 - 7/24, previous week is 7/11 - 7/17.

Testing: State-level values calculated by using 7-day rolling averages of reported tests. Regional- and national-level values calculated by using a combination of CELR (COVID-19 Electronic Lab Reporting) state health department-reported data and HHS Protect laboratory data (provided directly to Federal Government from public health labs, hospital labs, and commercial labs) through 7/22/2020. Last week is 7/16 - 7/22, previous week is 7/9 - 7/15. Testing data are inclusive of everything received and processed by the CELR system as of 19:00 EDT on 07/25/2020. Some dates may be incomplete due to delays in reporting. Testing data may be backfilled over time, resulting in changes week-to-week in testing data. It is critical that states provide as up-to-date testing data as possible.

Mobility: Descartes Labs. This data depicts the median distance moved across a collection of mobile devices to estimate the level of human mobility within a county; 100% represents the baseline mobility level. Data is anonymized and provided at the county level. Data through 7/24/2020.

SNFs: Skilled nursing facilities. National Healthcare Safety Network. Last week is 7/13-7/19, previous week is 7/6-7/12.



IOWA

STATE REPORT | 07.26.2020

COVID-19 COUNTY AND METRO ALERTS

LOCALITIES IN RED ZONE

LOCALITIES IN YELLOW ZONE

METRO AREA (CBSA) LAST WEEK

3

Dubuque
Marshalltown
Ottumwa

14

Top 12 shown (full list below)

Des Moines-West Des Moines
Waterloo-Cedar Falls
Cedar Rapids
Fort Dodge
Mason City
Omaha-Council Bluffs
Sioux City
Ames
Muscatine
Clinton
Spirit Lake
Storm Lake

COUNTY LAST WEEK

8

Dubuque
Marshall
Franklin
Wapello
Hardin
Emmet
Lyon
Montgomery

53

Top 12 shown (full list below)

Polk
Scott
Black Hawk
Linn
Dallas
Webster
Cerro Gordo
Woodbury
Pottawattamie
Story
Warren
Muscatine

All Yellow CBSAs: Des Moines-West Des Moines, Waterloo-Cedar Falls, Cedar Rapids, Fort Dodge, Mason City, Omaha-Council Bluffs, Sioux City, Ames, Muscatine, Clinton, Spirit Lake, Storm Lake, Carroll, Spencer

All Yellow Counties: Polk, Scott, Black Hawk, Linn, Dallas, Webster, Cerro Gordo, Woodbury, Pottawattamie, Story, Warren, Muscatine, Jasper, Clinton, Dickinson, Sioux, Plymouth, Jackson, Bremer, Buena Vista, Boone, Tama, Carroll, Guthrie, Jones, Wright, Hancock, Washington, Benton, Madison, Kossuth, Mitchell, Buchanan, Winnebago, Clay, Worth, Clayton, Clarke, Palo Alto, O'Brien, Page, Harrison, Pocahontas, Chickasaw, Lee, Louisa, Monroe, Monona, Taylor, Greene, Decatur, Ringgold, Ida

Red Zone: Those core-based statistical areas (CBSAs) and counties that during the last week reported both new cases above 100 per 100,000 population, and a diagnostic test positivity result above 10%.

Yellow Zone: Those core-based statistical areas (CBSAs) and counties that during the last week reported both new cases between 10-100 per 100,000 population, and a diagnostic test positivity result between 5-10%, or one of those two conditions and one condition qualifying as being in the "Red Zone."

Note: Top 12 locations are selected based on the highest number of new cases in the last three weeks.

DATA SOURCES

Cases and Deaths: State values are calculated by aggregating county-level data from USAFacts; therefore, the values may not match those reported directly by the state. Data is through 7/24/2020; last week is 7/18 - 7/24, three weeks is 7/4 - 7/24.

Testing: CELR (COVID-19 Electronic Lab Reporting) state health department-reported data through 7/22/2020. Last week is 7/16 - 7/22. Testing data may be backfilled over time, resulting in changes week-to-week in testing data. It is critical that states provide as up-to-date testing data as possible.

POLICY RECOMMENDATIONS FOR COUNTIES IN THE RED ZONE

Public Messaging

- Wear a mask at all times outside the home and maintain physical distance
- Limit social gatherings to 10 people or fewer
- Do not go to bars, nightclubs, or gyms
- Use take out or eat outdoors socially distanced
- Protect anyone with serious medical conditions at home by social distancing at home and using high levels of personal hygiene, including handwashing and cleaning surfaces
- Reduce your public interactions and activities to 25% of your normal activity

Public Officials

- Close bars and gyms, and create outdoor dining opportunities with pedestrian areas
- Limit social gatherings to 10 people or fewer
- Institute routine weekly testing of all workers in assisted living and long-term care facilities. Require masks for all staff and prohibit visitors
- Ensure that all business retailers and personal services require masks and can safely social distance
- Increase messaging on the risk of serious disease for individuals in all age groups with preexisting obesity, hypertension, and diabetes mellitus, and recommend to shelter in place
- Work with local community groups to provide targeted, tailored messaging to communities with high case rates, and increase community level testing
- Recruit more contact tracers as community outreach workers to ensure all cases are contacted and all positive households are individually tested within 24 hours
- Provide isolation facilities outside of households if COVID-positive individuals can't quarantine successfully

Testing

- Move to community-led neighborhood testing and work with local community groups to increase access to testing
- Surge testing and contact tracing resources to neighborhoods and zip codes with highest case rates
- **Diagnostic pooling:** Laboratories should use pooling of samples to increase testing access and reduce turnaround times to under 12 hours. Consider pools of 2-3 individuals in high incidence settings and 5:1 pools in setting where test positivity is under 10%
- **Surveillance pooling:** For family and cohabitating households, screen entire households in a single test by pooling specimens of all members into single collection device

POLICY RECOMMENDATIONS FOR COUNTIES IN THE YELLOW ZONE IN ORDER TO PREEMPT EXPONENTIAL COMMUNITY SPREAD

Public Messaging

- Wear a mask at all times outside the home and maintain physical distance
- Limit social gatherings to 25 people or fewer
- Do not go to bars or nightclubs
- Use take out, outdoor dining or indoor dining when strict social distancing can be maintained
- Protect anyone with serious medical conditions at home by social distancing at home and using high levels of personal hygiene
- Reduce your public interactions and activities to 50% of your normal activity

Public Officials

- Limit gyms to 25% occupancy and close bars until percent positive rates are under 3%; create outdoor dining opportunities with pedestrian areas
- Limit social gatherings to 25 people or fewer
- Institute routine weekly testing of all workers in assisted living and long-term care facilities. Require masks for all staff and prohibit visitors
- Ensure that all business retailers and personal services require masks and can safely social distance
- Increase messaging on the risk of serious disease for individuals in all age groups with preexisting obesity, hypertension, and diabetes mellitus, and recommend to shelter in place
- Work with local community groups to provide targeted, tailored messaging to communities with high case rates, and increase community level testing
- Recruit more contact tracers as community outreach workers to ensure all cases are contacted and all positive households are individually tested within 24 hours
- Provide isolation facilities outside of households if COVID-positive individuals can't quarantine successfully

Testing

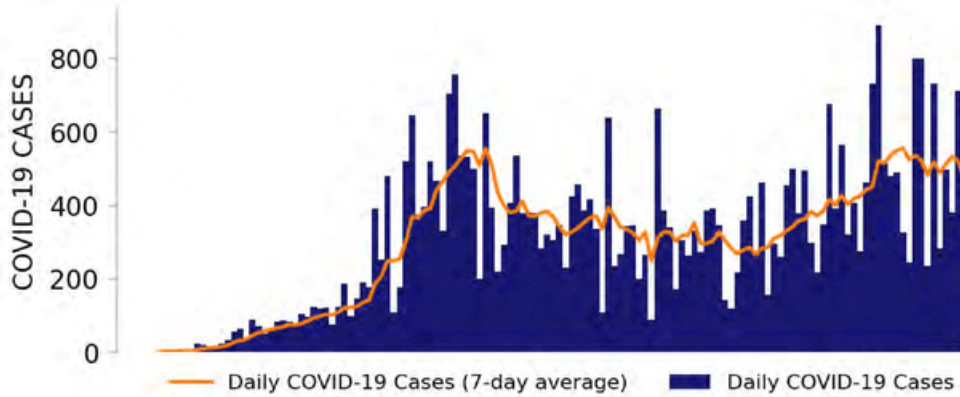
- Move to community-led neighborhood testing and work with local community groups to increase access to testing
- Surge testing and contact tracing resources to neighborhoods and zip codes with highest case rates
- **Diagnostic pooling:** Laboratories should use pooling of samples to increase testing access and reduce turnaround times to under 12 hours. Consider pools of 3-5 individuals
- **Surveillance pooling:** For family and cohabitating households, screen entire households in a single test by pooling specimens of all members into single collection device



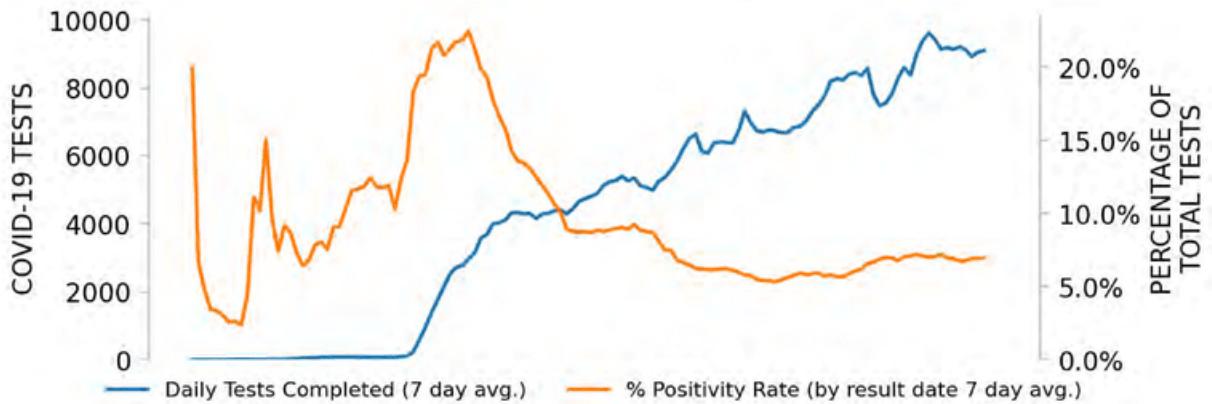
IOWA

STATE REPORT | 07.26.2020

NEW CASES

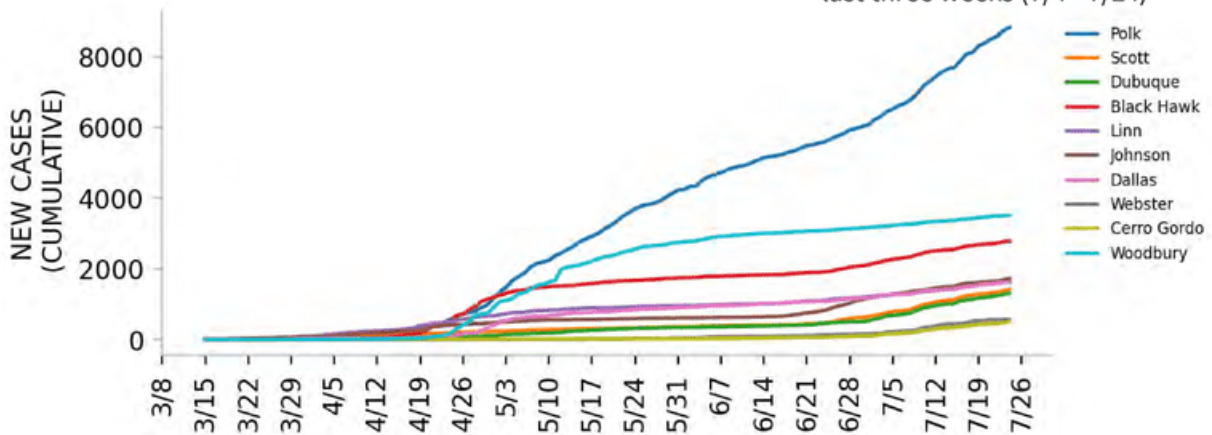


TESTING



Top counties based on greatest number of new cases in last three weeks (7/4 - 7/24)

TOP COUNTIES



DATA SOURCES

Cases: County-level data from USAFacts. State values are calculated by aggregating county-level data from USAFacts; therefore, the values may not match those reported directly by the state. Data is through 7/24/2020.

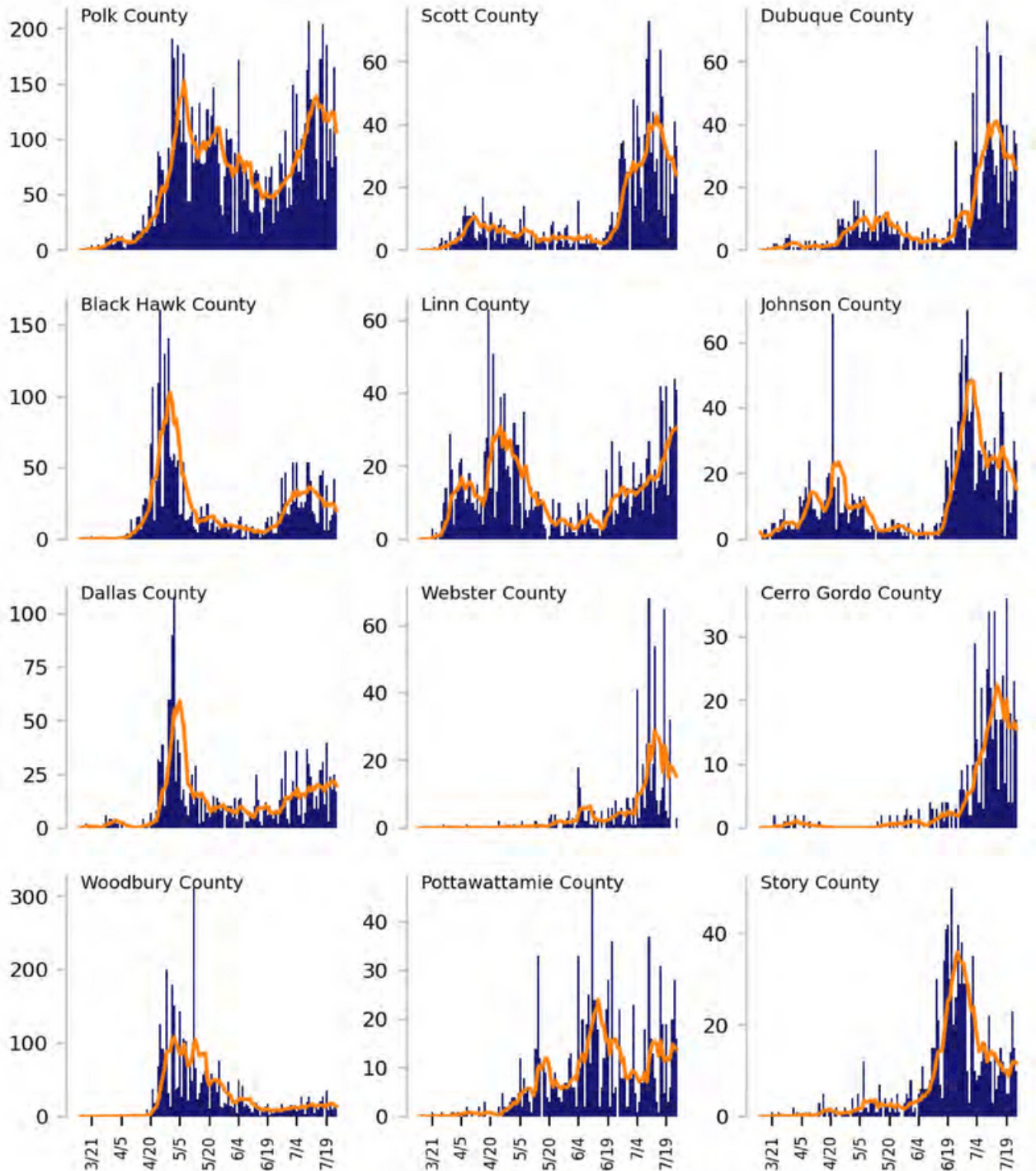
Testing: CELR (COVID-19 Electronic Lab Reporting) state health department-reported data through 7/22/2020.



Top 12 counties based on number of new cases in the last 3 weeks

— Daily COVID-19 Cases (7-day average) ■ Daily COVID-19 Cases

TOTAL DAILY CASES



DATA SOURCES

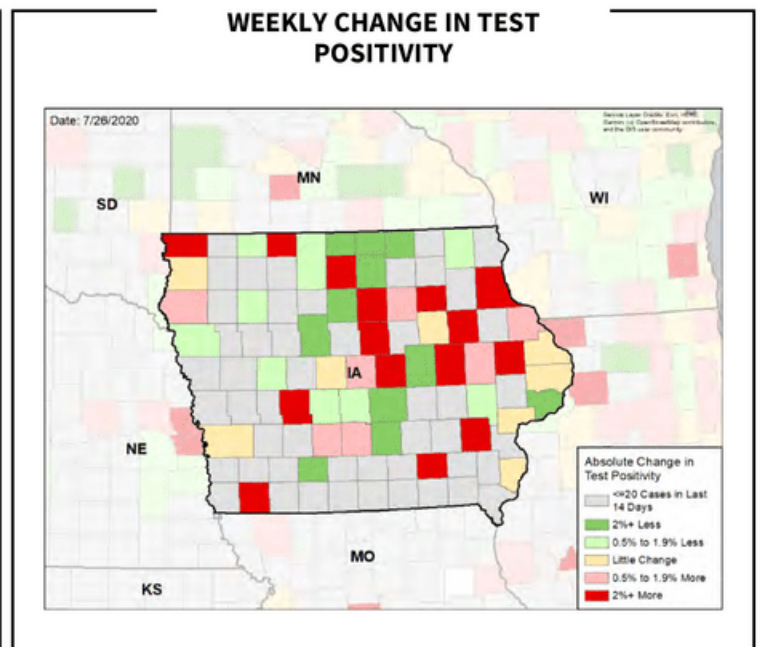
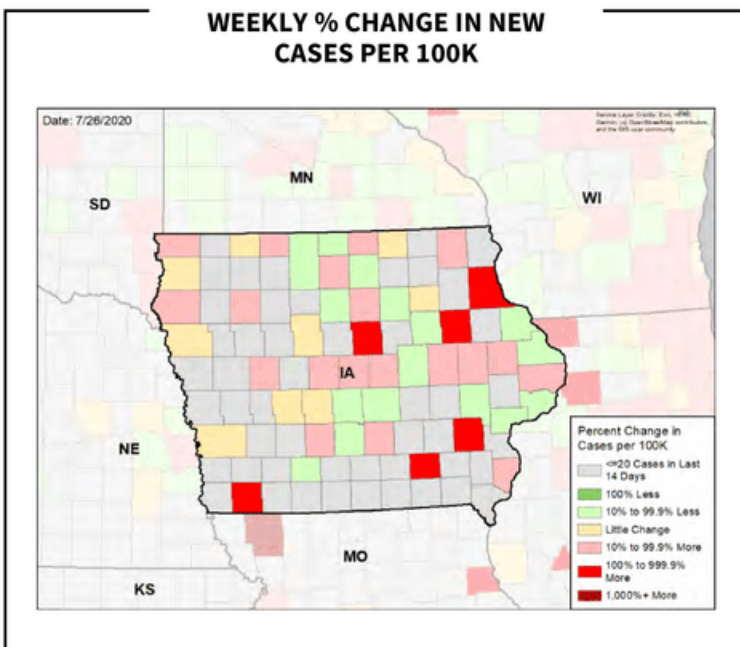
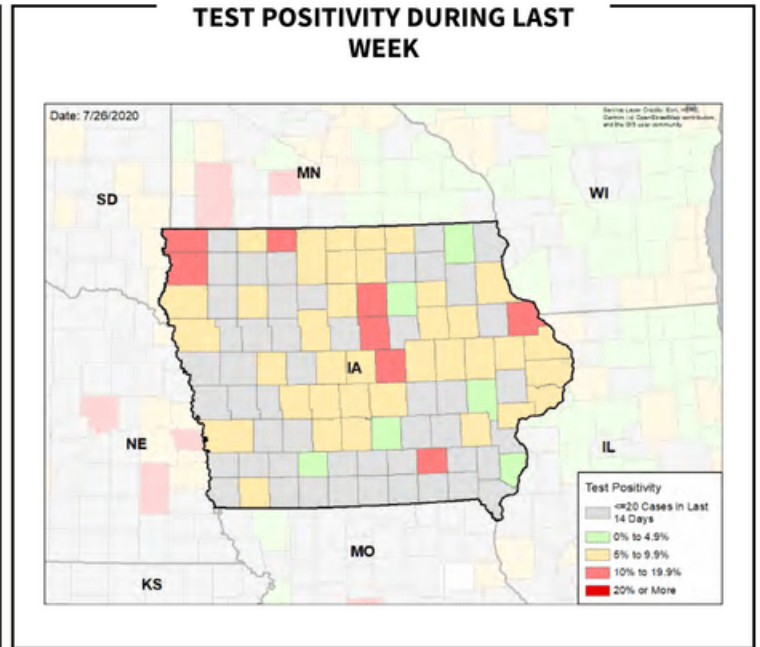
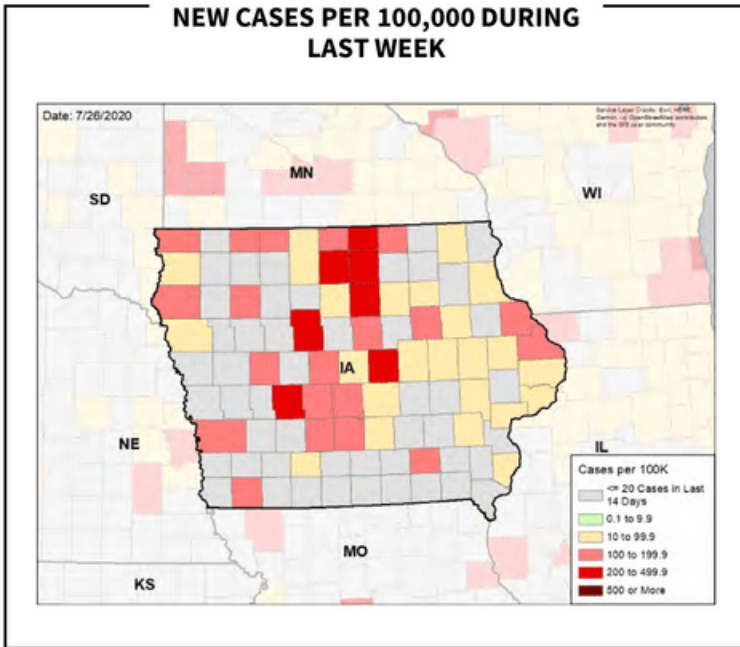
Cases: County-level data from USAFacts through 7/24/2020. Last 3 weeks is 7/4 - 7/24.



IOWA

STATE REPORT | 07.26.2020

CASE RATES AND DIAGNOSTIC TEST POSITIVITY DURING THE LAST WEEK



DATA SOURCES

Cases: County-level data from USAFacts through 7/24/2020. Last week is 7/18 - 7/24, previous week is 7/11 - 7/17.

Testing: CELR (COVID-19 Electronic Lab Reporting) state health department-reported data through 7/22/2020. Last week is 7/16 - 7/22, previous week is 7/9 - 7/15. Testing data may be backfilled over time, resulting in changes week-to-week in testing data. It is critical that states provide as up-to-date testing data as possible.