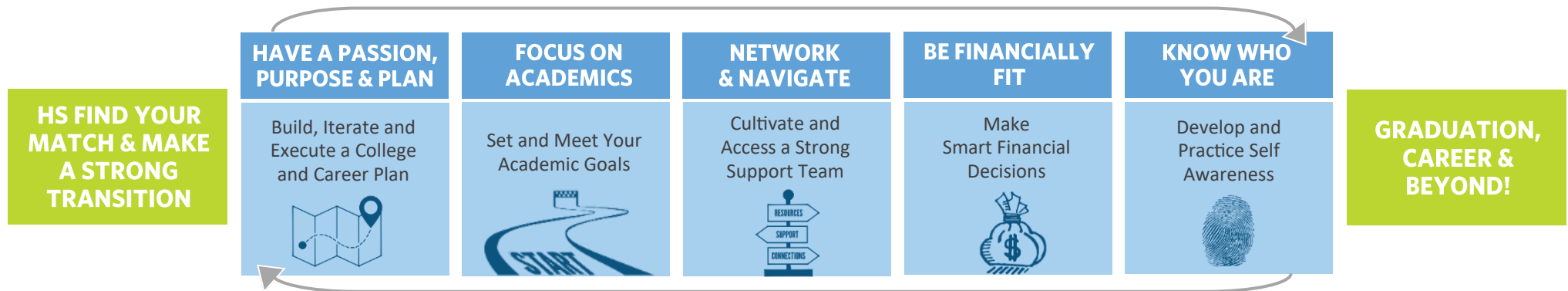


College Persistence Strategy Framework

KEYS TO STUDENT SUCCESS



KEY ADVISOR COACHING PRACTICES

<p>Execute a Strong Transition with every rising first-year college student on your caseload.</p> <ul style="list-style-type: none"> • Build relationships with alumni • College counselors and persistence advisors collaborate on transition • Complete pre-college benchmarks • Complete strategic outreach to students most at-risk for summer melt 	<p>Complete Persistence Benchmarks to drive insight-driven, personalized, transformational coaching.</p> <ul style="list-style-type: none"> • Connect with 1st and 2nd year college students (virtually/ in-person) to strengthen and maintain relationships and sense of belonging throughout the term • Collect and input transcript and financial aid data 	<p>Conduct a Data Deep Dive following each benchmark/transcript period to prioritize caseloads and strategize interventions for the next semester.</p> <ul style="list-style-type: none"> • Analyze benchmark and transcript trends • Identify next steps and create a plan for follow-up • Prioritize group and individual interventions 	<p>Execute Strategic Interventions with students at-risk of stopping out.</p> <ul style="list-style-type: none"> • Execute follow-up plan from Data Deep Dive • Provide effective coaching on the keys to student success • Foster and support self-advocacy and help-seeking behaviors in students • Develop partnerships with colleges and complementary service providers
--	--	---	---

ENABLING CONDITIONS

<p>ONGOING, RIGOROUS PROGRESS MONITORING</p> <ul style="list-style-type: none"> • Rigorous and realistic bottoms-up goals • Weekly metric tracking using the Strong Transition & Persistence Dashboards • Regular communication on progress towards goals with regional teams and stakeholders 	<p>COUNSELING & ADVISING FEEDBACK LOOP</p> <ul style="list-style-type: none"> • College counselors and persistence advisors collaborate on strong transition • Regular and open communication and data sharing between counseling and advising teams—sharing persistence challenges/successes with high schools 	<p>EXTERNAL PARTNERSHIPS</p> <ul style="list-style-type: none"> • Formal and informal partnerships with higher ed. to enable data sharing and service coordination • Leverage KIPP college partner liaisons to support student persistence • Partnerships with other service providers (e.g. mental health, career readiness) to amplify and complement our services 	<p>CONTINUOUS ADVISOR COMPETENCY DEVELOPMENT</p> <ul style="list-style-type: none"> • Align JD, performance review, and PD to Persistence Strategy Framework • Cross-region peer support and coaching • Attendance at national KTC webinars and in-person retreats • Regional PD days; professional memberships and conferences
--	--	--	--