



Special Collection Service

Pacific SIGDEV Conference  
March 2011

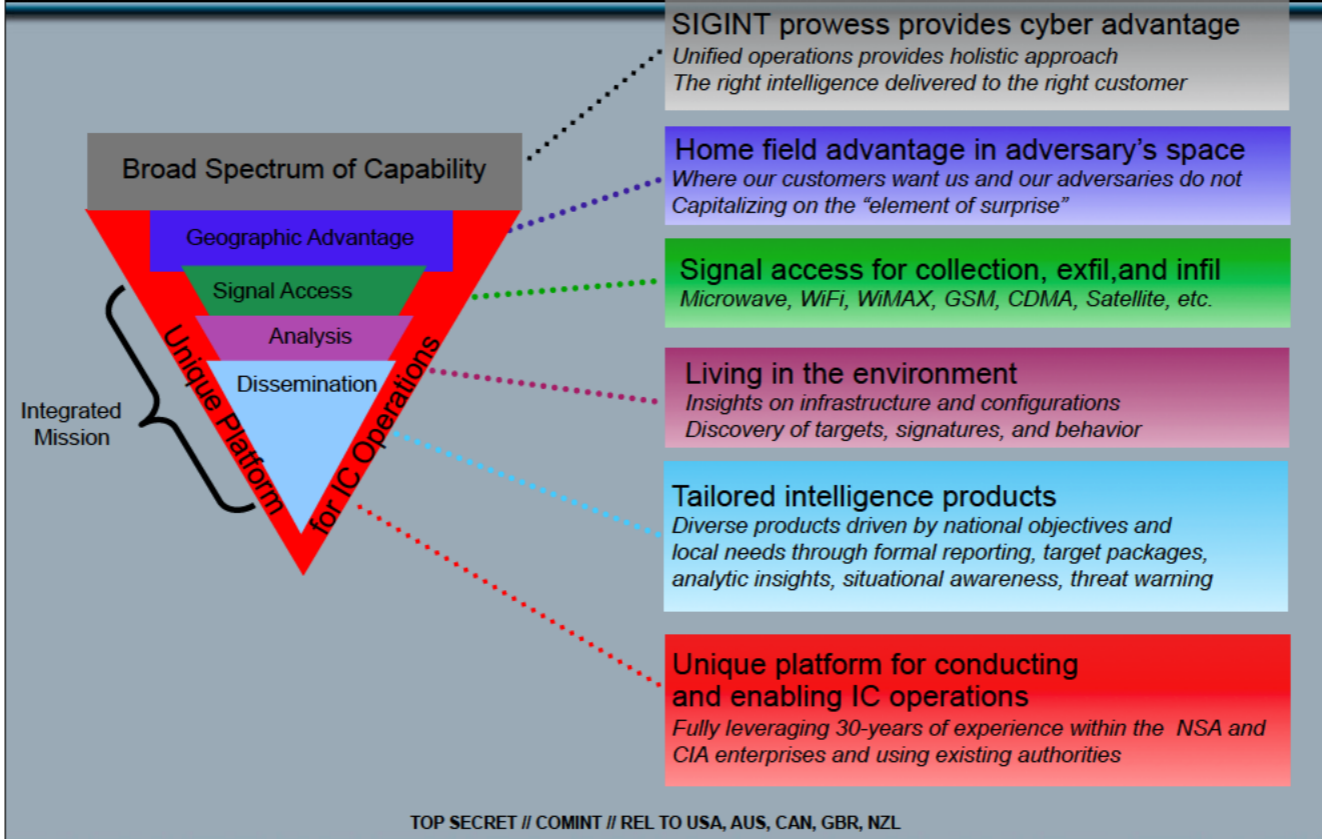
The Overall Classification of this Briefing:

TOP SECRET//COMINT//REL USA, AUS, CAN, GBR, NZL

Derived From: NSA/CSSM 1-52  
Dated: 20070108  
Declassify On: 20360301



# The SCS Cyber Advantage



## Human enabled SIGINT

Employ all the capabilities of the SCS to gain access to the targets – Maybe use a SIGINT focused mission to highlight how it can easily contribute to a cyber focus in the CNE/CNA/CND world? Make the use of SIGINT information operations a liability for our adversaries in cyber operations

Unique place within the Intelligence Community where we can and do blend CIA and NSA operations to further IC intelligence needs

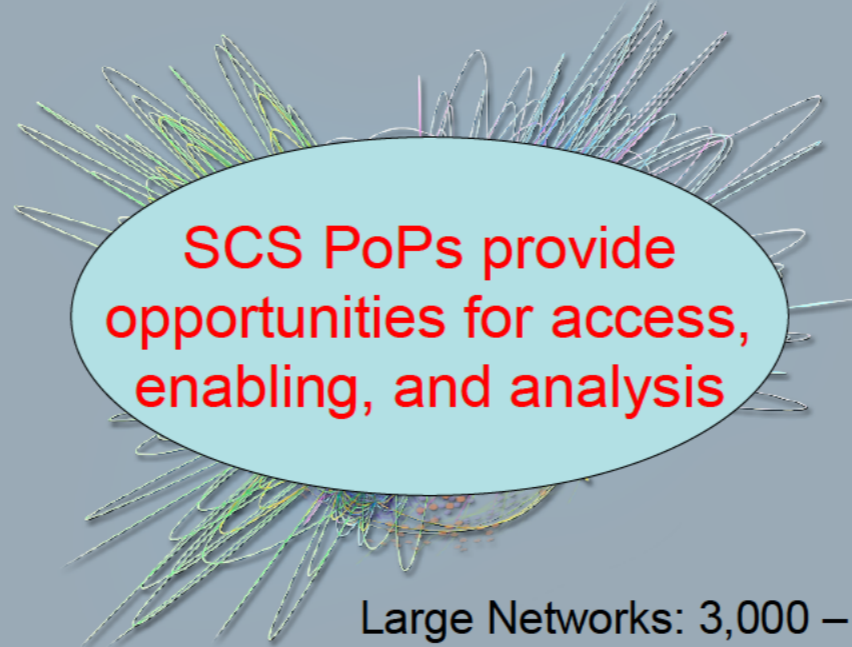


Special Collection Service

TOP SECRET // COMINT // REL TO USA, AUS, CAN, GBR, NZL

# 80 Points of Presence 1000s of Opportunities on the Net

*SCS lives on the Net* at worldwide Points of Presence

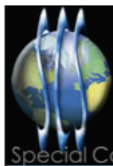


Large Networks: 3,000 – 5,000

WLANs: 10,000 – 30,000

TOP SECRET // COMINT // REL TO USA, AUS, CAN, GBR, NZL

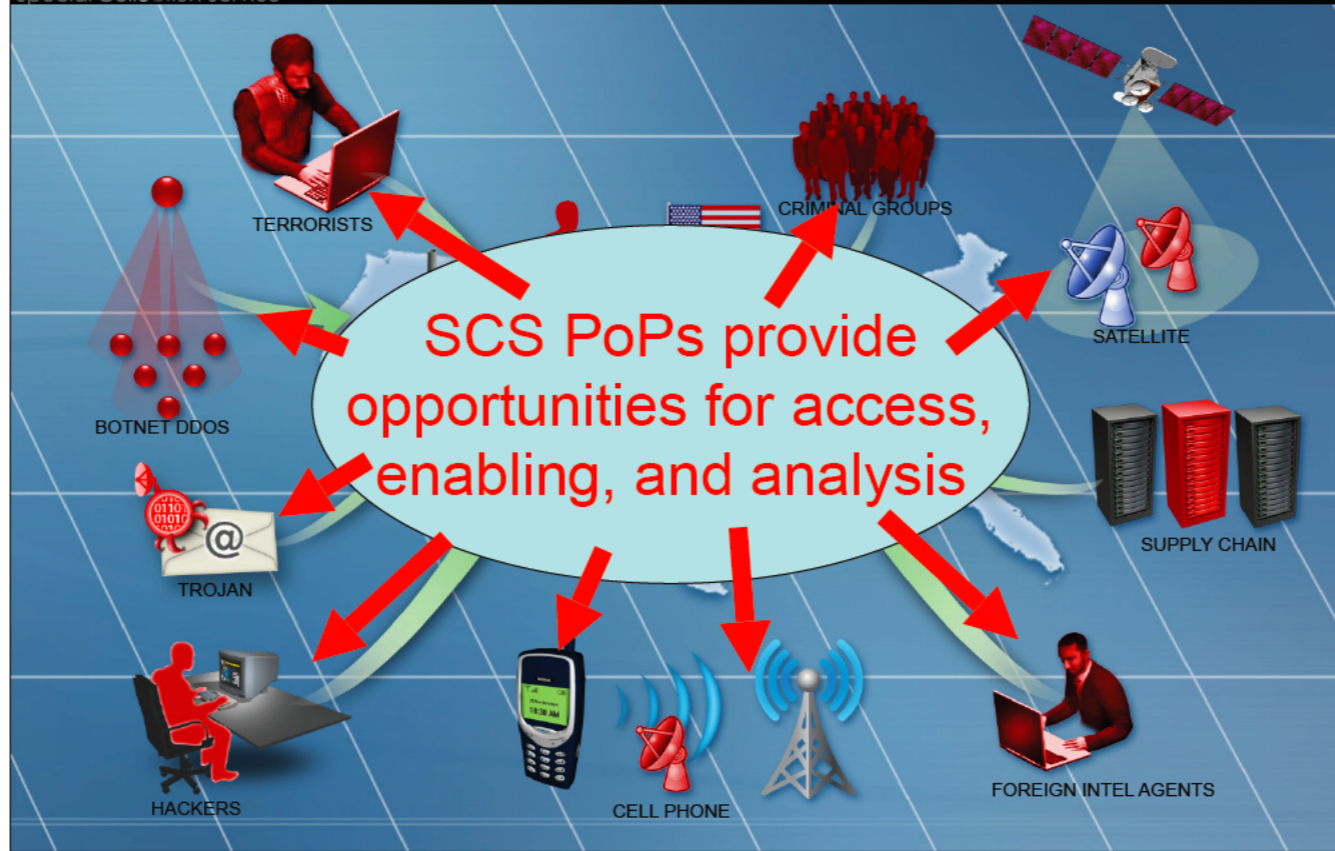
Need to know how to better survey, populate databases, and understand what accesses we have 1 guy – 4 systems  
Significant diversity in the parts of the network that we see, not just fiber and router access



Special Collection Service

TOP SECRET // COMINT // REL TO USA, AUS, CAN, GBR, NZL

# SCS Opportunities



Look at what we are doing with a cyber viewpoint, not just SIGINT