



Injuries in Licensed Child Care Facilities

Licensed child care facilities are required by law to complete an [Online Injury Report](#) within 24 hours of any injury in which a child received emergency medical attention or has been hospitalized. In **Calendar Year 2017** (January 1, 2017 - December 31, 2017), 1,200 injuries requiring medical attention or hospitalization were reported by licensed child care facilities in Colorado.

Additionally, the graph below shows the **rate of injuries per 100,000 licensed capacity slots** (the point-in-time maximum number of children a licensed facility may legally serve) by month, over the course of the last two full calendar years.

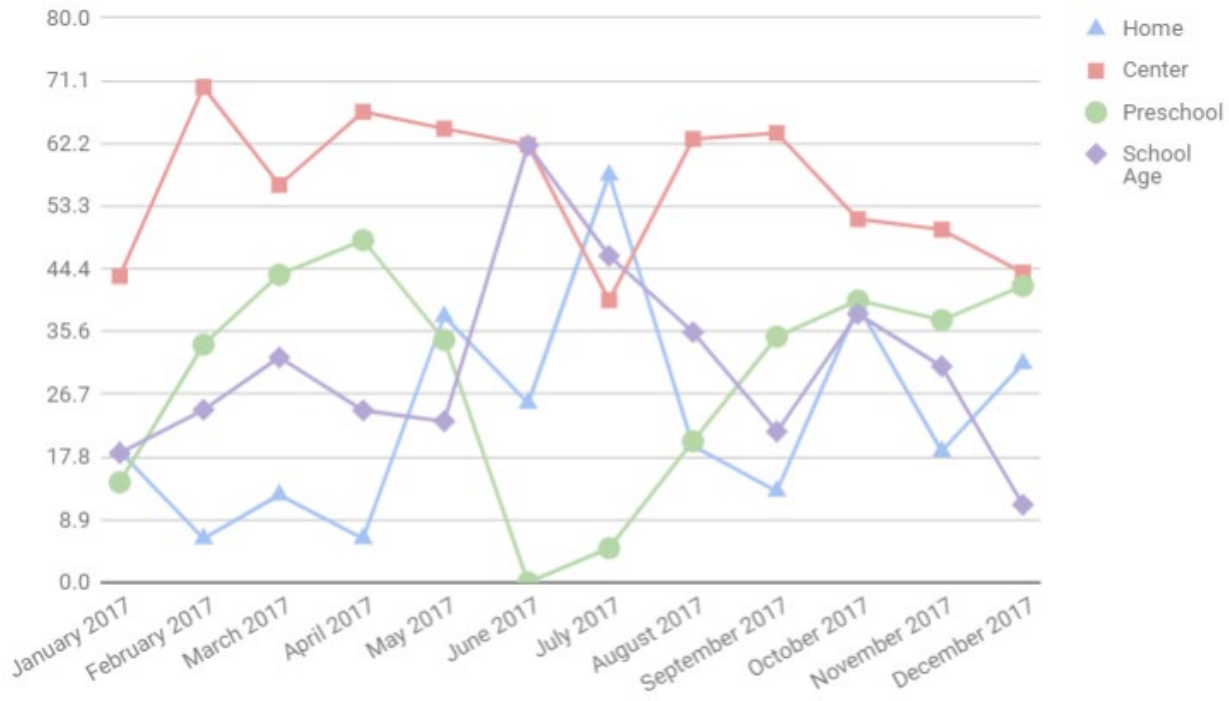
Rate of Reported Injuries in Licensed Facilities Requiring Medical Attention or Hospitalization
Per 100,000 Licensed Capacity



These data are also provided by license type on the next page.



Rate of Reported Injuries in Licensed Facilities by License Type
Per 100,000 Licensed Capacity





Fatalities in Licensed Child Care Facilities

The Colorado Child Fatality Prevention System (CFPS) within the Colorado Department of Public Health and Environment (CDPHE) oversees child fatality reviews each year in Colorado. CFPS conducts individual reviews of childhood deaths (ages 0-17 years) using a public health approach. This includes a review of about 200 child fatalities per year, including:

- Undetermined causes.
- Unintentional injury (e.g., drowning, falls, fires).
- Violence (e.g., homicide, any firearm death).
- Motor vehicle or other transport-related- crashes.
- Child abuse and neglect.
- Sudden unexpected infant death (SUID).
- Suicide.

Data collected from the reviews are aggregated into an annual report presented to the Colorado General Assembly each State Fiscal Year (July 1st to June 30th), which can be found [here](#).

As part of the reviews, the CFPS identifies the location of these fatalities, including those that occurred within licensed child care facilities. The table below displays the number of child fatalities of any cause reviewed by the CFPS for each State Fiscal Year.

Number of Fatalities in Licensed Child Care Facilities by State Fiscal Year

State Fiscal Year*	Number of Fatalities in Licensed Facilities**
2011-12	Fewer than 3***
2012-13	5
2013-14	Fewer than 3***
2014-15	Fewer than 3***
2015-16	4

* NOTE: State Fiscal Years run from July 1 to June 30.

** In this context, licensed facilities include non-24 hour facilities such as homes and centers. This does NOT include facilities that provide foster care or group homes.

*** To protect the privacy of the family and loved ones associated with these child fatalities, numbers are not reported for any particular data point with fewer than three fatalities.