

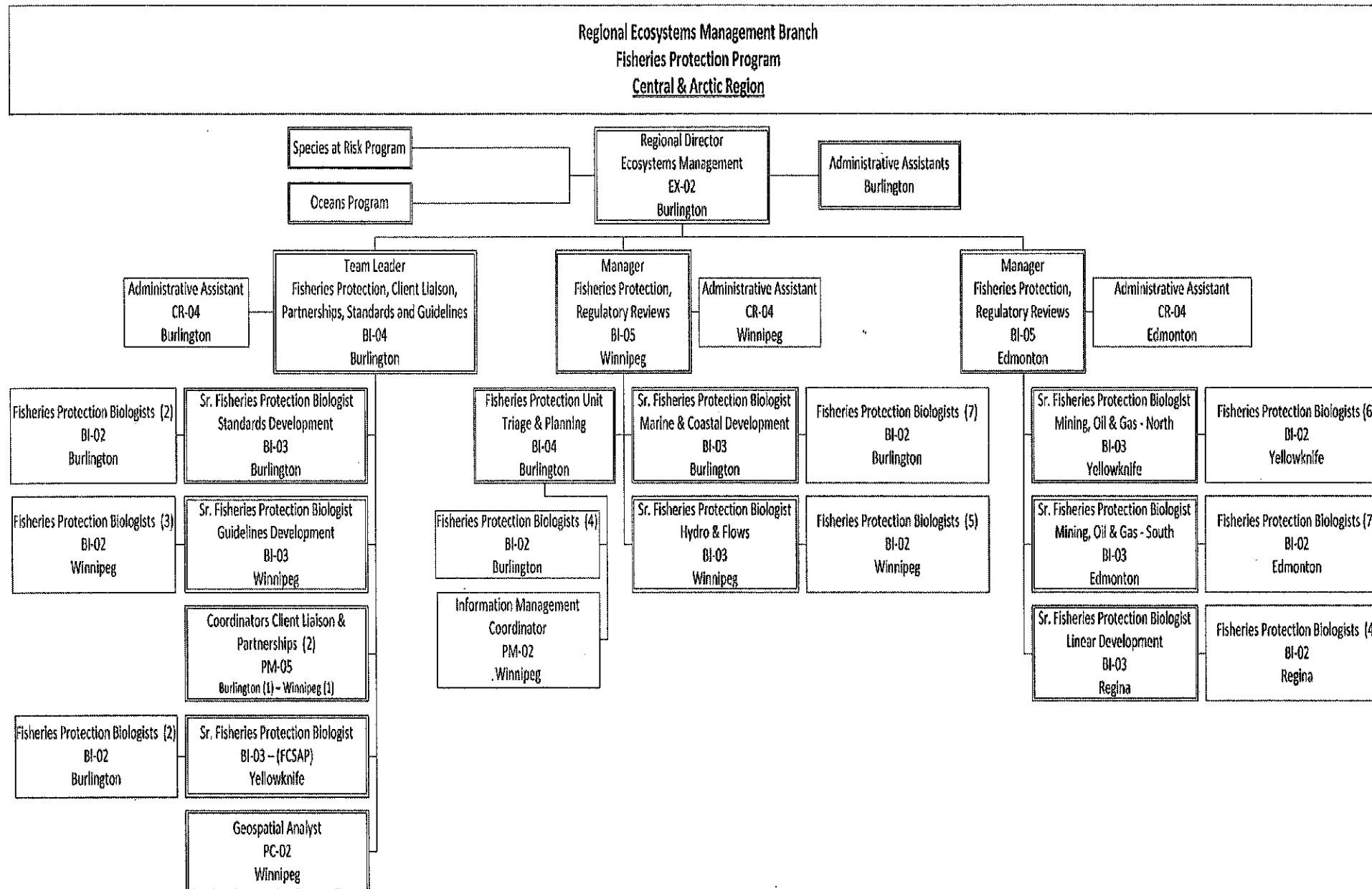
**NOTES TO READER**

- Unit members will work from a model work description and can shift between units according to workload ebbs and flows.
- Employees in regional service delivery points will have direct reporting relationships with regional headquarters.
- Regional Director of Ecosystems Management will continue to report to Regional Director General.
- In Pacific Region, the establishment of the Fisheries Protection Program will necessitate some minor changes to reporting relationships in the Salmonid Enhancement Program because the two programs are integrated at the Area Manager level and they share a management position in each Area. There will be no program changes to the Salmonid Enhancement Program, simply an adjustment to reporting relationships at the manager level. Over the next 3 months, the Region will lead and undertake the necessary work to implement the classification changes in the Salmonid Enhancement Program, and an approved organizational chart showing the new reporting relationship.

I approve,

OCT 19 2012

Claire Dansereau, Deputy Minister



**NOTES TO READER**

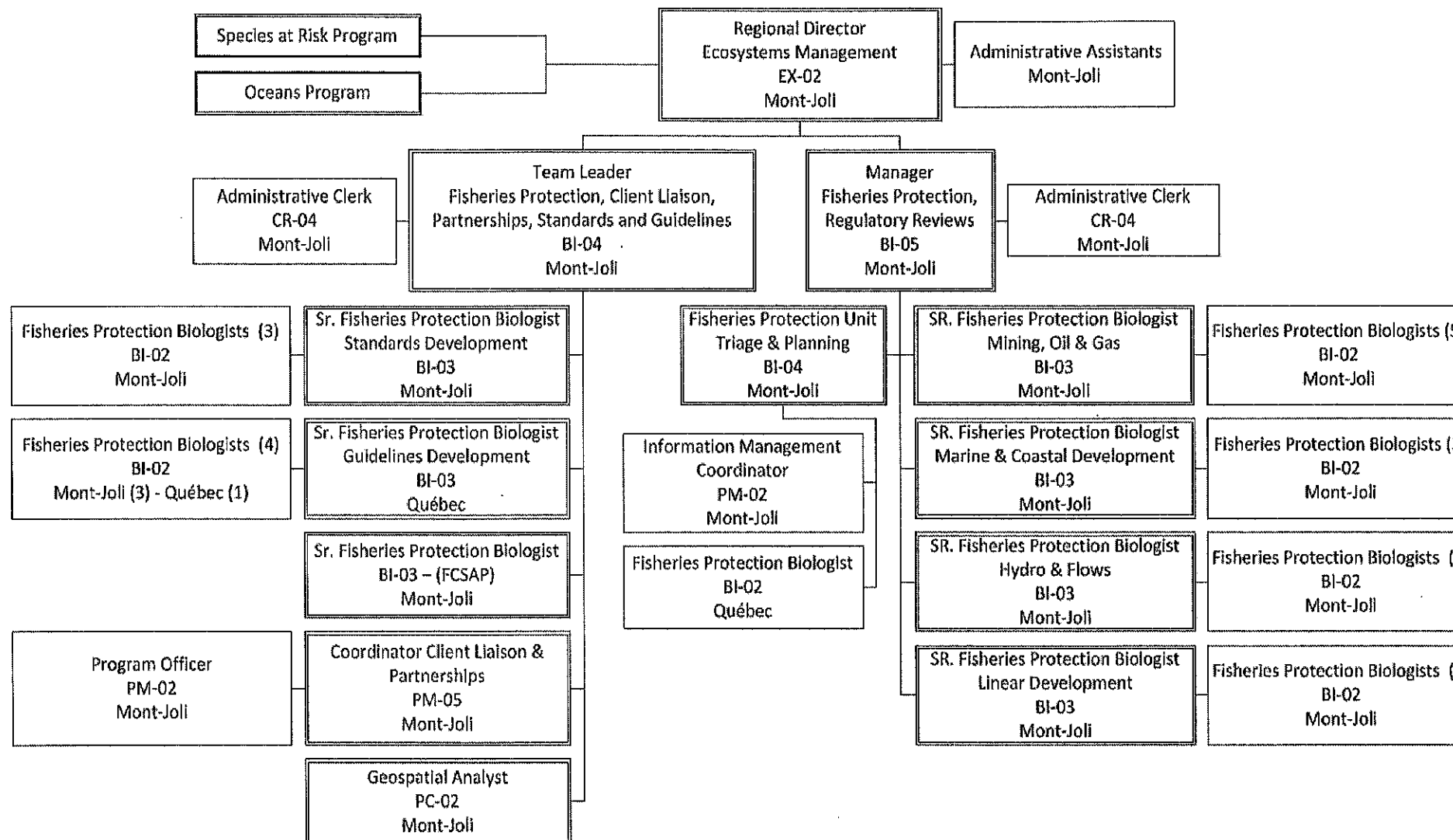
- Unit members will work from a model work description and can shift between units according to workload ebbs and flows.
- Employees in regional service delivery points will have direct reporting relationships with regional headquarters.
- Regional Director of Ecosystems Management will continue to report to Regional Director General.

I approve,

**OCT 19 2012**

Claire Dansereau, Deputy Minister

**Regional Ecosystems Management Branch  
Fisheries Protection Program  
Québec Region**



**NOTES TO READER**

- Unit members will work from a model work description and can shift between units according to workload ebbs and flows.
- Employees in the Québec service delivery point will have direct reporting relationships with regional headquarters.
- Regional Director of Ecosystems Management will continue to report to Regional Director General.

I approve,

OCT 19 2012

Claire Dansereau, Deputy Minister