



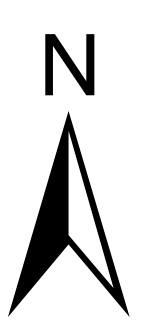
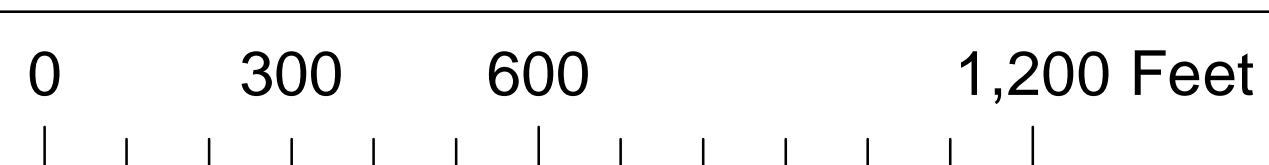
Total Project
Project Length: 1 mile

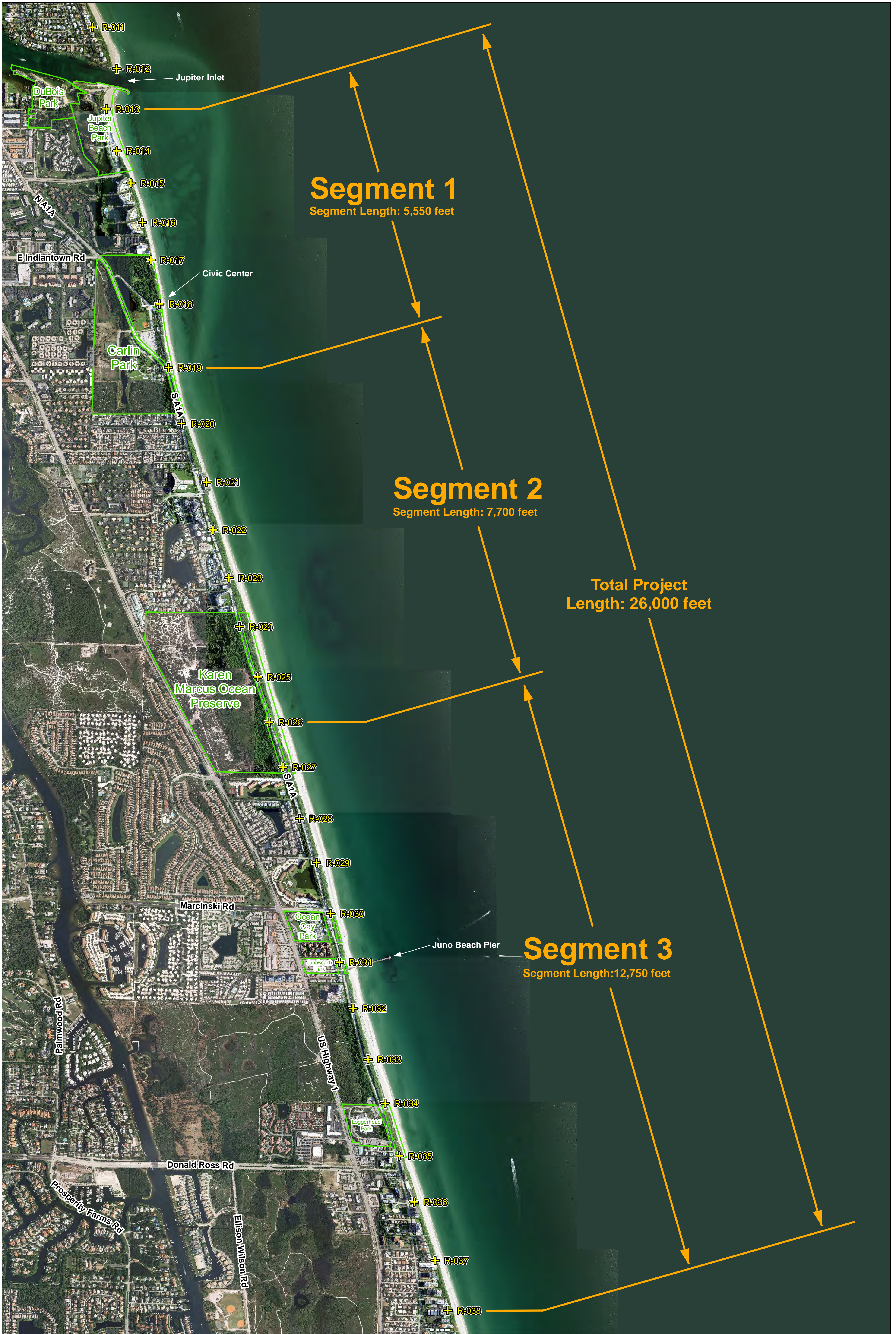


Palm Beach County Department of Environmental Resources Management
2300 North Jog Road, 4th Floor
West Palm Beach, Florida 33411-2741
(561) 233-2400

Coral Cove Shore Protection Project

6/1/2016





Segment 1
Segment Length: 5,550 feet

Segment 2
Segment Length: 7,700 feet

Total Project
Length: 26,000 feet

Segment 3
Segment Length: 12,750 feet

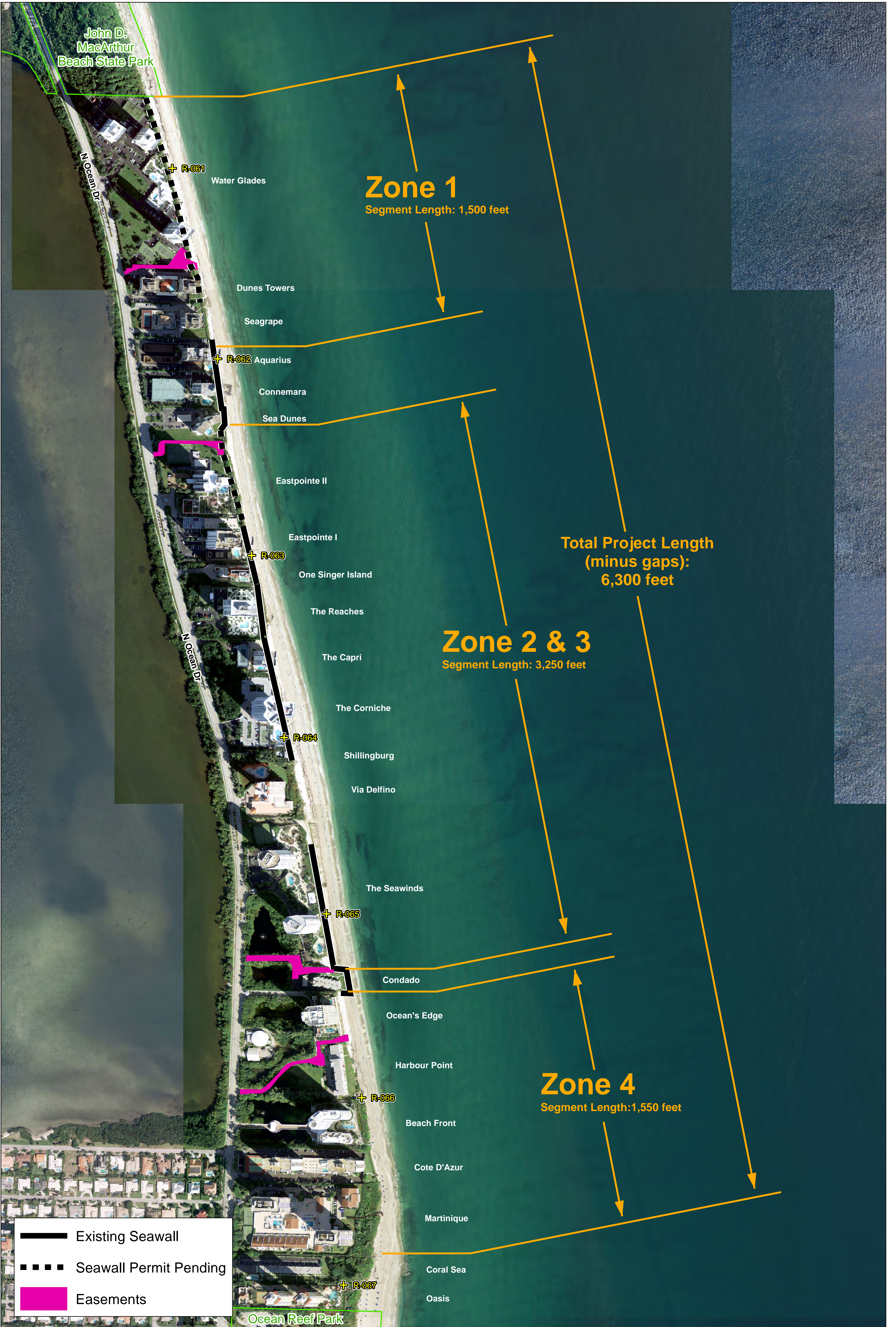


Palm Beach County Department of Environmental Resources Management
2300 North Jog Road, 4th Floor
West Palm Beach, Florida 33411-2741
(561) 233-2400

North County Comprehensive Shore Protection Project

6/1/2016





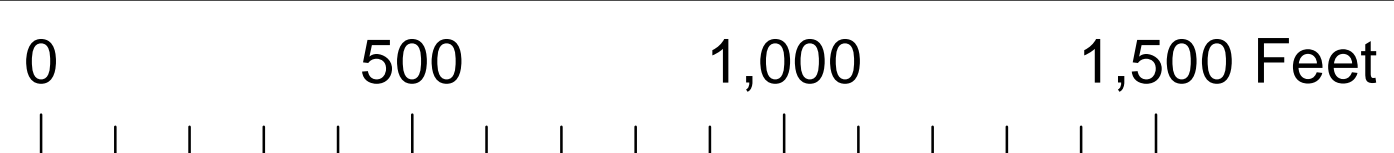
- Existing Seawall
- Seawall Permit Pending
- Easements

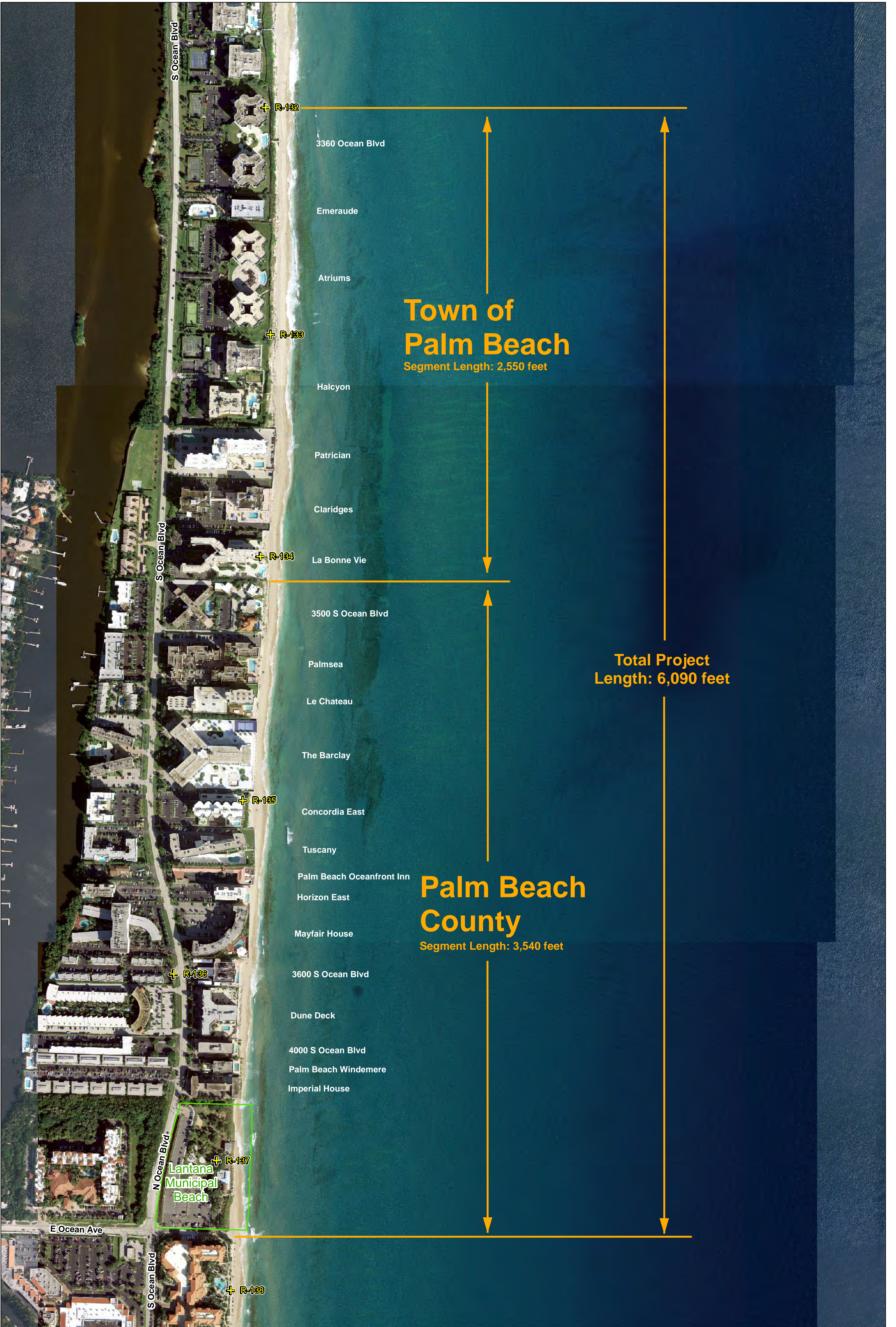


Palm Beach County Department of Environmental Resources Management
 2300 North Jog Road, 4th Floor
 West Palm Beach, Florida 33411-2741
 (561) 233-2400

Singer Island Shore Protection Project

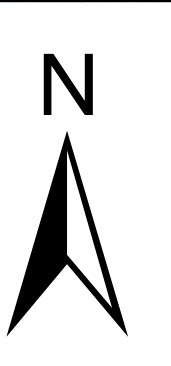
6/1/2016





Palm Beach County Department of Environmental Resources Management
2300 North Jog Road, 4th Floor
West Palm Beach, Florida 33411-2741
(561) 233-2400

Southern Palm Beach Island Comprehensive Shore Stabilization Project			
7/14/2017	0	500	1,000
	1,500 Feet		





Total Project
Project Length: 5,950 feet



Palm Beach County Department of
Environmental Resources Management
2300 North Jog Road, 4th Floor
West Palm Beach, Florida 33411-2743
(561) 233-2400

Ocean Ridge Shore Protection Project

6/1/2016

