

LEGEND

- Grab Sample Location
- ⊕ Monitoring Well
- ⊕ Municipal Well
- ⊕ Private Well
- TCE Not Detected
- TCE Detected Below the MCL
- TCE Exceeded the MCL in One or More Samples
- Road
- TCE Plume (>5 µg/L)
- Former Kiel Brothers Property
- Miller Salvage Property
- Parcel Boundary

- Notes:**
1. 2014 ESRI World Imagery Basemap
 2. Parcel boundaries were obtained through the Indiana Department of Homeland Security database publication dated June 2015
 3. S/I/D - indicates the sample interval(s) collected at each boring where S is shallow, I is intermediate, and D is deep
 4. Sample locations collected on private (residential or commercial) property are approximate
 5. TCE MCL - EPA Maximum Contaminant Level of 5 micrograms per liter (µg/L)
 6. EPA - U.S. Environmental Protection Agency

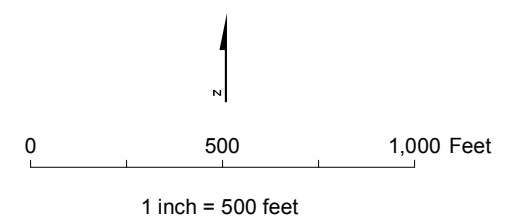
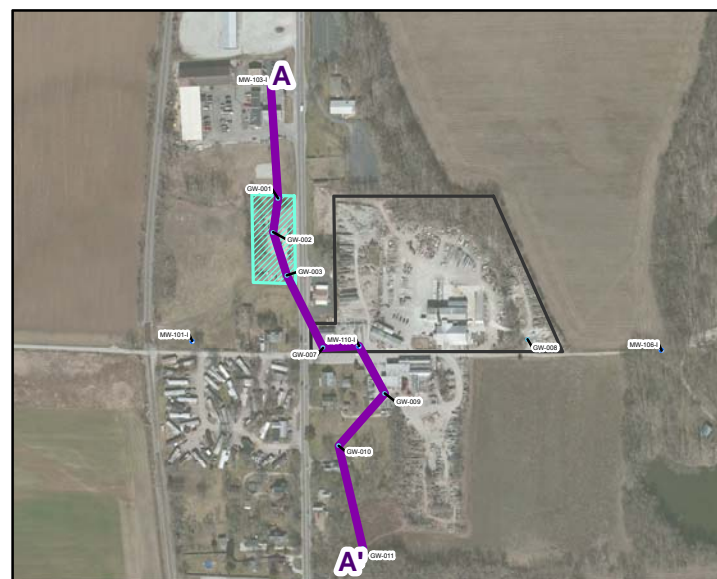
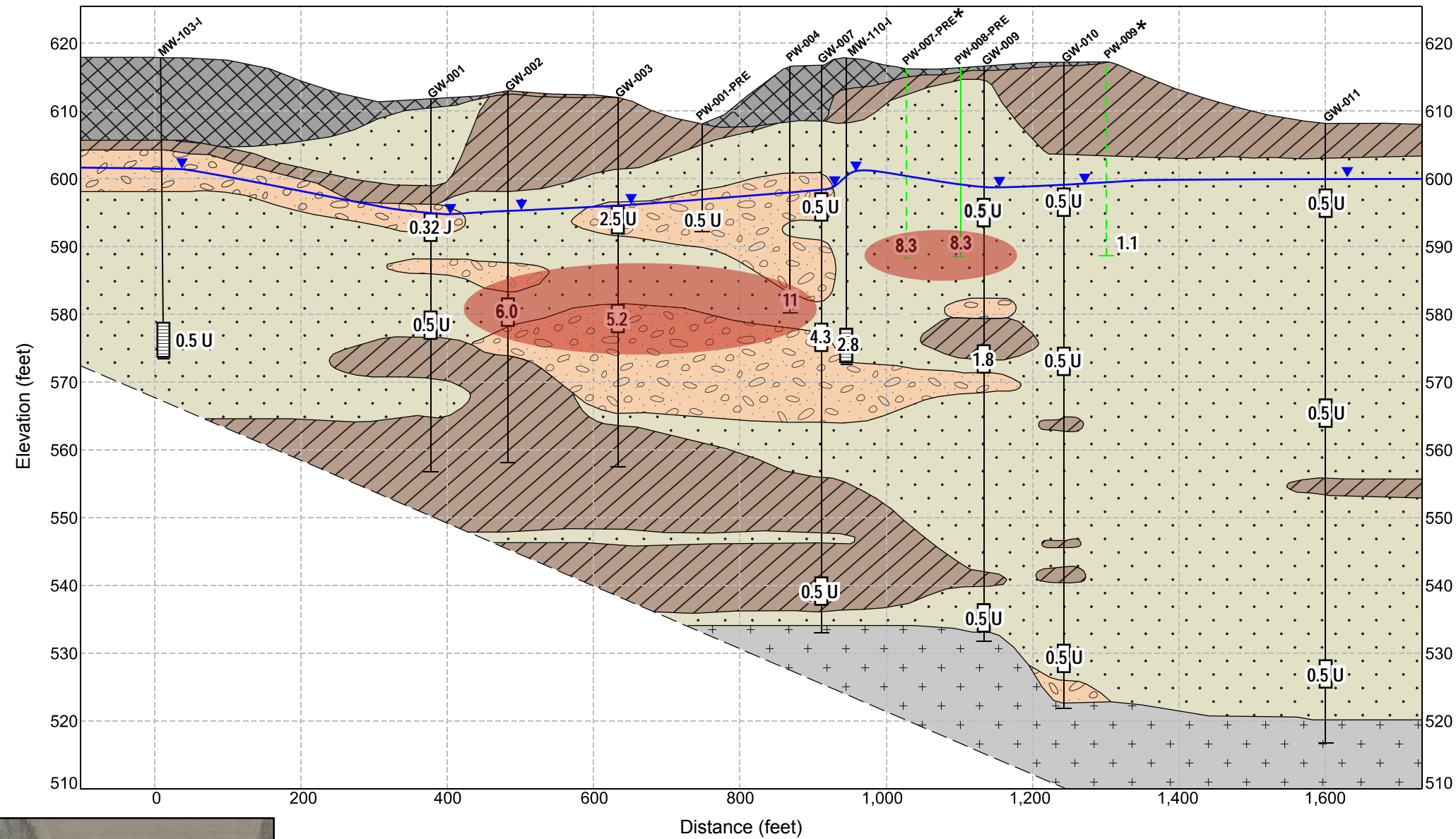


FIGURE 1-7
Summary of Trichloroethene Results
 Garden City Groundwater Plume Site
 Feasibility Study Report
 Garden City, Indiana



North
A

South
A'



LEGEND

- Potentiometric Surface
- Fill
- Sand
- Gravel
- Clay/Silt
- Bedrock
- Well Screen Interval
- Grab Sample Interval
- Private Well (dashed where depth is estimated)
- 5.0 µg/L isoconcentration contour

Notes:

1. Lithologic contacts dashed where inferred.
2. Potentiometric surface based on the September 2015 synoptic water level event.
3. Private wells added to show distribution of TCE but were not used for lithologic interpretation.
4. *The depth of the locations PW-007-PRE and PW-008-PRE are estimated based on adjacent well installations.
5. Trichloroethene (TCE) results shown in micrograms per liter (µg/L).
6. At locations where more than one sample was collected, the highest detected concentration is shown (Table 4-5).
7. U = result not detected
8. J = estimated detected result

FIGURE 1-8
Distribution of TCE along Cross Section A-A'
Garden City Groundwater Plume Site
Feasibility Study Report
Garden City, Indiana

