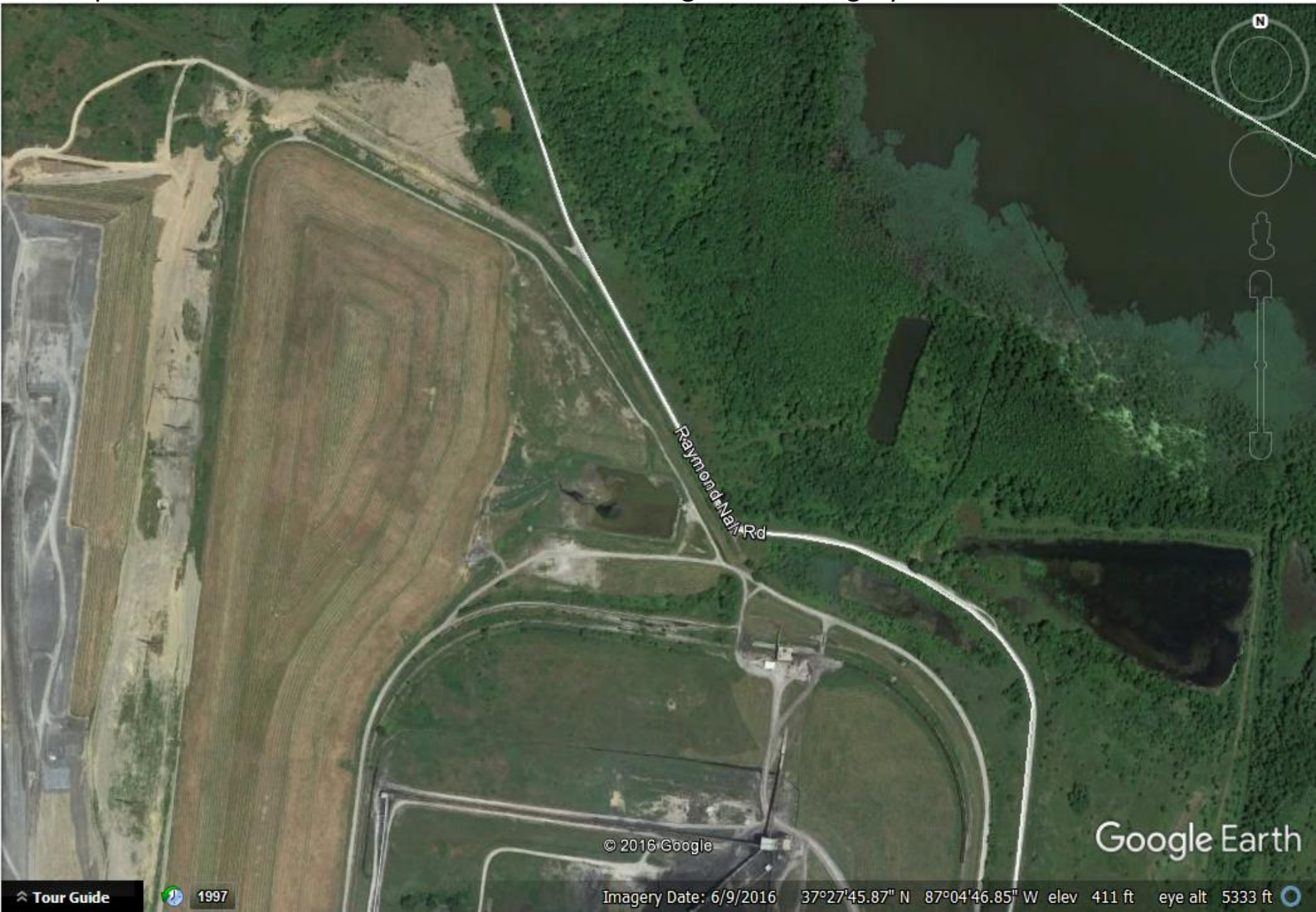


North portion of the closed Phase I Waste Area. Google Earth imagery date = 6-9-16.

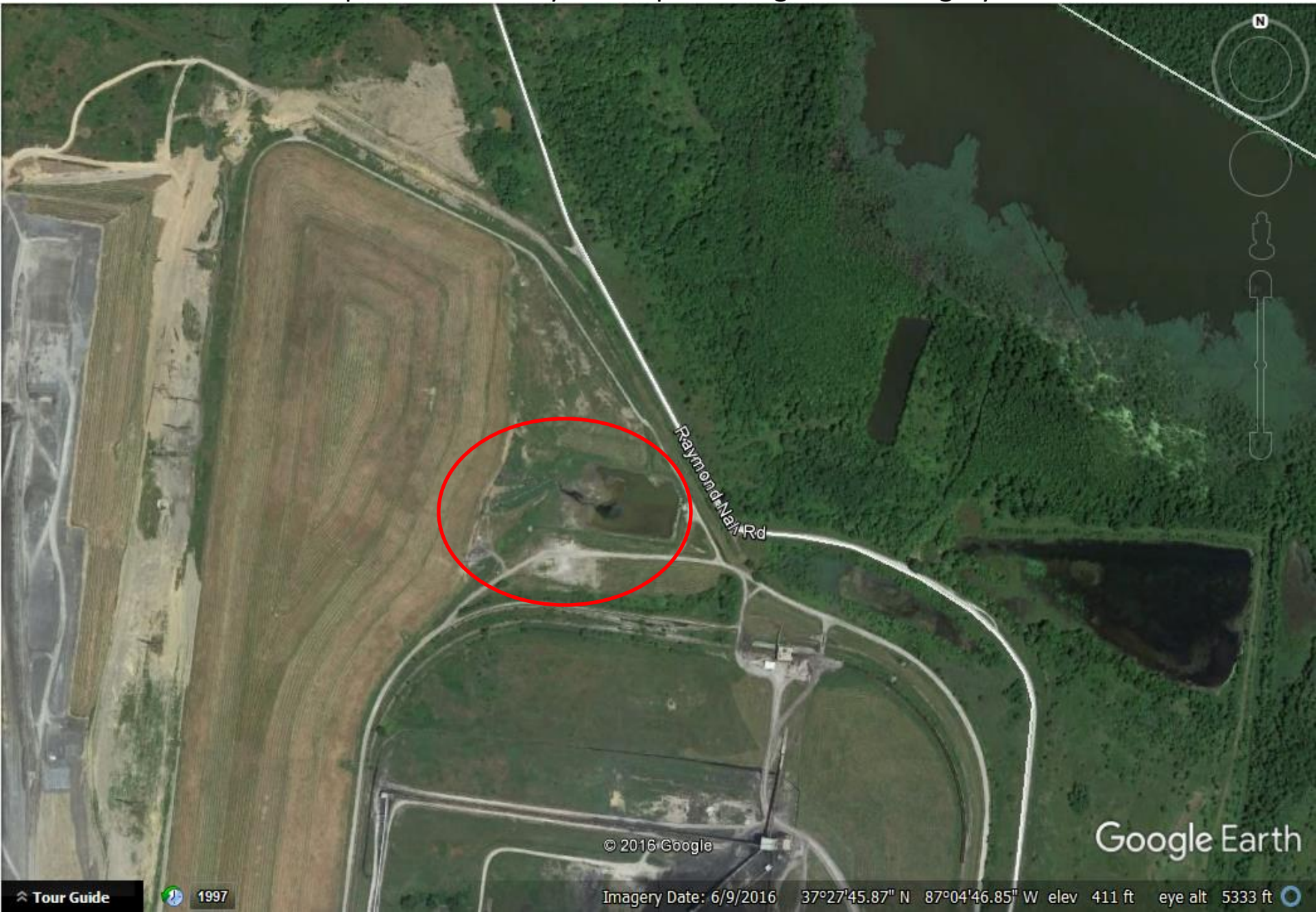


© 2016 Google

Google Earth



Area of visible leachate impacts denoted by red ellipse. Google Earth imagery date = 6-9-16.



© 2016 Google

Google Earth

Imagery Date: 6/9/2016 37°27'45.87" N 87°04'46.85" W elev 411 ft eye alt 5333 ft

Tour Guide

1997



Google Earth imagery from 2016 showing leachate draining from north-east portion of Phase I Waste Area into sediment pond associated with KPDES Outfall 002. Google Earth imagery date = 6-9-16.



© 2016 Google

Google Earth



AI 3319—Big Rivers Electric Company (D B Wilson Station).

Red curved line shows approximate area where multiple small leachate outbreaks were observed. Red star = approximate location where sample was collected – the water elevation in the pond was higher during the inspection on 10-3-16. Google Earth imagery date = 6-9-16.





Google Earth imagery from 2013 showing leachate draining from north-east portion of Phase I Waste Area into sediment pond associated with KPDES Outfall 002. Google Earth imagery date = 10-7-13.

