



ST. JOHNS COUNTY SCHOOL DISTRICT





AGENDA

- School District Accolades
- St. Johns County Growth
- School Funding
- November Referendums
 - Half-Cent Sales Tax
 - School Millage

St. Johns County School District

- “A” grade since 2004
- ACT & SAT scores above state & national level
- 94% graduation rate



- Certificate of Excellence in financial reporting 2016 – 2023
- 97% of ALL funds are spent in schools
- \$77M cost avoidance with comprehensive energy management plan



Returned children to in person learning quickly and safely during COVID



Keep Our Children Safe

St. Johns County has DOUBLED in population over the last 18 years.



Residents

160,266 in 2005

320,110 in 2023



Students

23,273 in 2005

51,826 in 2023

So have the number of students in our schools.

There are TWO school funding silos

Capital Outlay Budget

- New Construction
- Security Improvements
- Maintenance
- Technology

Supported by Half-Cent

Operating Budget

- Salaries & Benefits
- Utilities
- Instructional Materials
- Consumable Supplies

Supported by School Millage

In 2015, Voters Approved a Half-Cent Sales Tax for Capital Outlay

“Promises Made, Promises Kept”

Safety

- ❑ Mobile Panic Alarm Systems
- ❑ Single Point of Entry Improvements

Growth

- ❑ One New Elementary
- ❑ One New K-8 School
- ❑ Partially Funded Two K-8s

Maintenance

- ❑ 13 Roof Replacements
- ❑ Covered PE Areas, Restrooms and other site improvements

Technology

- ❑ 12,000 Computers
- ❑ 1,420 LED Panels
- ❑ Wi-Fi upgrades in Schools



HALFCENTSUCCESS.COM

Half-Cent SUNSETS in 2025

\$37M Annual Revenue Loss

- **Keeping our children safe remains #1 priority**
- **Growth Continues**
 - Still one of the fastest growing counties in Florida
 - Projected to add 13,600 students by 2033
 - 600 portables for 13,000 students - **Not a long-term solution**
 - Construction costs are up 63%
- **Must maintain, replace and upgrade critical systems**
- **Technology continues to rapidly advance**

We Can't Afford to Lose the Half-Cent!

Half-Cent RENEWAL will be on the November '24 ballot

- **Sales tax STAYS at 6.5%**
- **Lowest sales tax in Northeast FL**
- **Half-cent sales tax collected stays in St. Johns County**
- **Up to 38% paid for by out-of-county visitors**
- **Citizens Advisory Committee will continue to monitor and advise**



Safety



Growth



Maintenance



Technology

“TWO Votes, ONE Decision”

Capital Outlay Budget



Supported by Half-Cent

Operating Budget



Supported by School Millage

“For Our **STUDENTS**”

School district is facing operational challenges

- Largest employer in St. Johns County – 6,438 employees
- St. Johns has a higher cost of living
- **Historic vacancy levels** for both instructional and support positions
- Duval, Clay & Nassau have passed millage increases

Avg. Teacher Salary

Flagler \$58,369

Duval \$55,282

Putnam \$55,000

▶ St. Johns \$53,484

We must offer competitive compensation!

Millage increase for TEACHER and STAFF pay will be on the November '24 ballot

What is Millage?

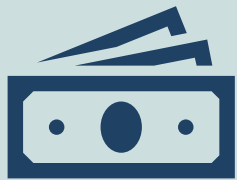
- One mill equals \$1 per \$1,000 of assessed value, less homestead

What does it cost?

- Avg. tax value in St. Johns County is \$360,000 which means \$1 day, per household

How will it be spent?

- Recruit and retain high-quality teachers and staff, invest in school safety and student welfare, and preserve and enhance educational programs, including science, technology, art, music and athletics



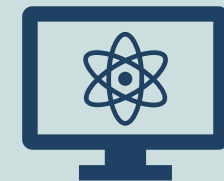
**Recruit &
Retain**



**School
Safety**



**Student
Welfare**



**Enhanced
Programs**

“TWO Votes, ONE Decision”

Half-Cent for Schools

- Growth, Safety, Maintenance & Technology
- No additional cost to residents
- Up to 38% paid by visitors
- 100% of half-cent stays in St. Johns
- Citizens Advisory Committee

10 Years

One Mill for Teachers & Staff

- Recruit and retain high-quality teachers and staff in a safe and secure learning environment, with enhanced student programs
- \$1/day for average household
- 100% of one-mill stays in St. Johns
- Citizens Advisory Committee

4 Years

For our STUDENTS!