

Rogue River Organics

Sample 150-073123-169 Gush Mints

Batch/Lot # BG.628.59

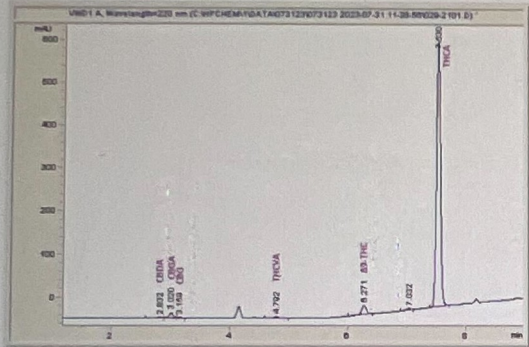
Sample Submitted: 07-31-2023; Report Date: 07-31-2023

Gush Mints

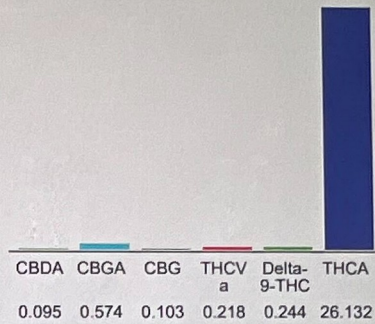
Batch/Lot # BG.628.59

Plant Material: Flower

Chromatogram



Cannabinoid Profile



Cannabinoid Profile by HPLC

0.24%
Delta-9-THC

0.00%
CBD

27.37%
Total Cannabinoids

Cannabinoid	% wt	mg/g
CBDA	0.095	0.95
CBGA	0.574	5.74
CBG	0.103	1.03
THCVa	0.218	2.18
Delta-9-THC	0.244	2.44
THCA	26.13	261.32
Total Cannabinoids	27.37	273.7
Calculated Total THC	23.16	231.62
Calculated CBD Yield	0.08	0.83

Calculated Total THC = Delta-9-THC + 0.877 * THCA
 Calculated Maximum CBD Yield = CBD + 0.877 * CBDA

Marin Analytics, LLC
 250 Bel Marin Keys Blvd, Suite D4
 Novato, CA 94949
 833-321-TEST / info@marinanalytics.com

Sara Biancalana
Sara Biancalana
 Chief Scientist

This sample has been tested by Marin Analytics, LLC using valid testing methodologies and a quality system. Values reported relate only to the sample tested. Marin Analytics, LLC makes no claims as to the efficacy, safety, or other risks associated with any detected or non-detected levels of any compounds reported herein. This Certificate shall not be reproduced except in full without the written approval of Marin Analytics, LLC. Copyright 2023 Marin Analytics, LLC All Rights Reserved.