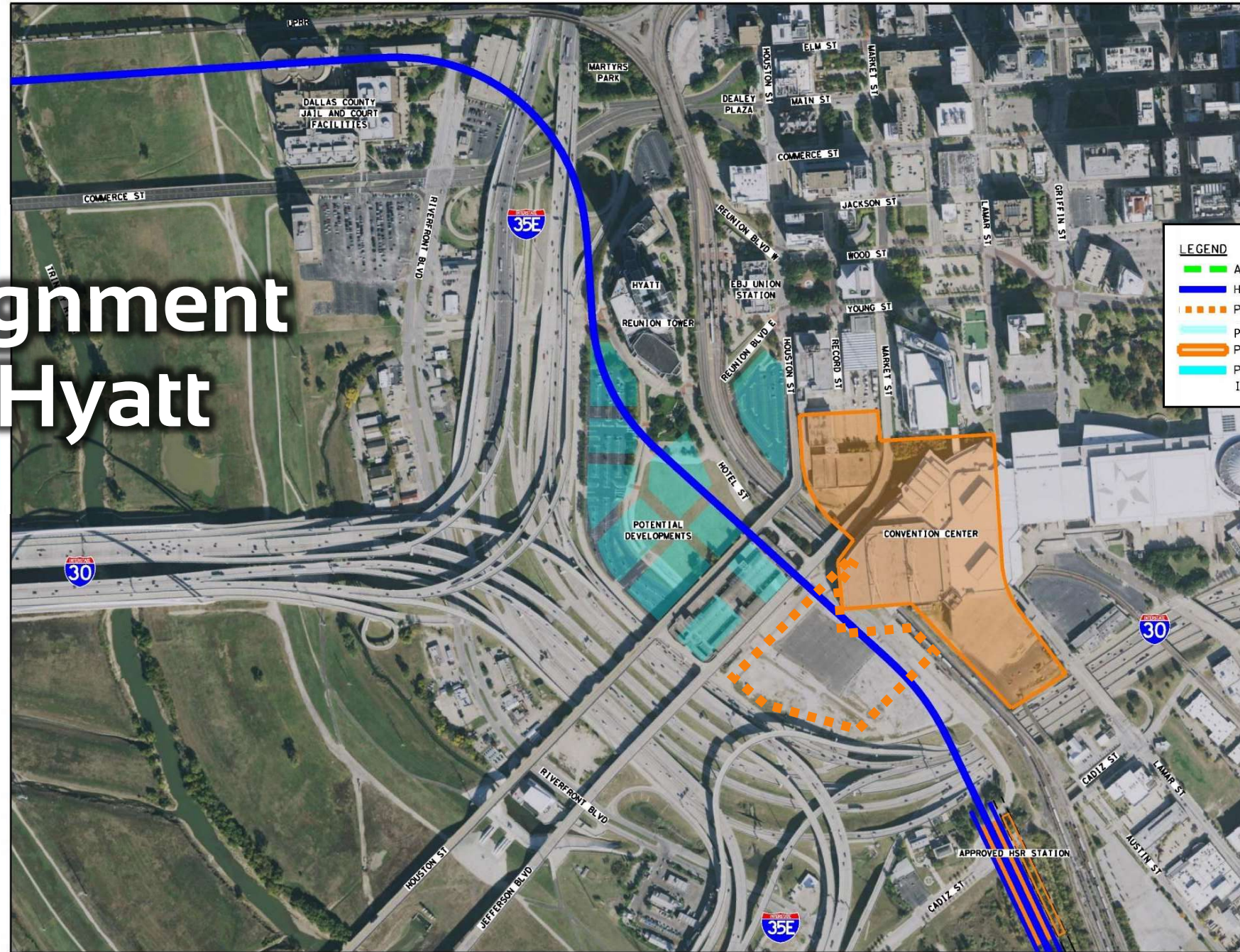


# HSR Alignment West of Hyatt



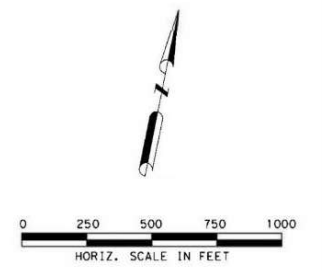
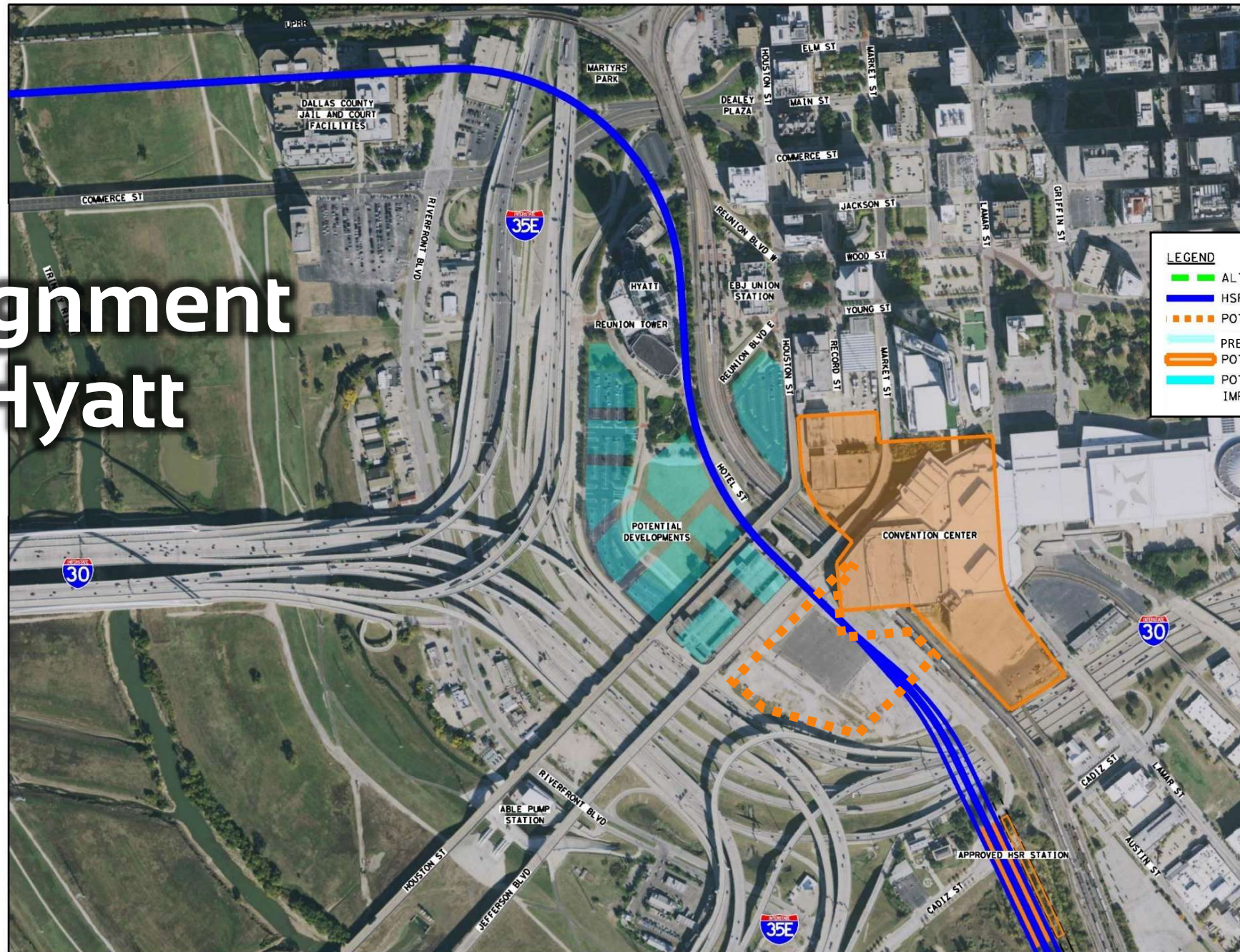
Alignment 1 Elevated -  
West of Hyatt Regency  
(Shown at 3/6/24 Dallas City  
Council)

 North Central Texas  
Council of Governments

DALLAS-FORT WORTH  
HIGH-SPEED  
TRANSPORTATION CONNECTIONS  
I-30 CORRIDOR ALTERNATIVES

URBAN CENTER CONNECTION  
DALLAS 4B ALTERNATIVE  
ALIGNMENT

# HSR Alignment East of Hyatt



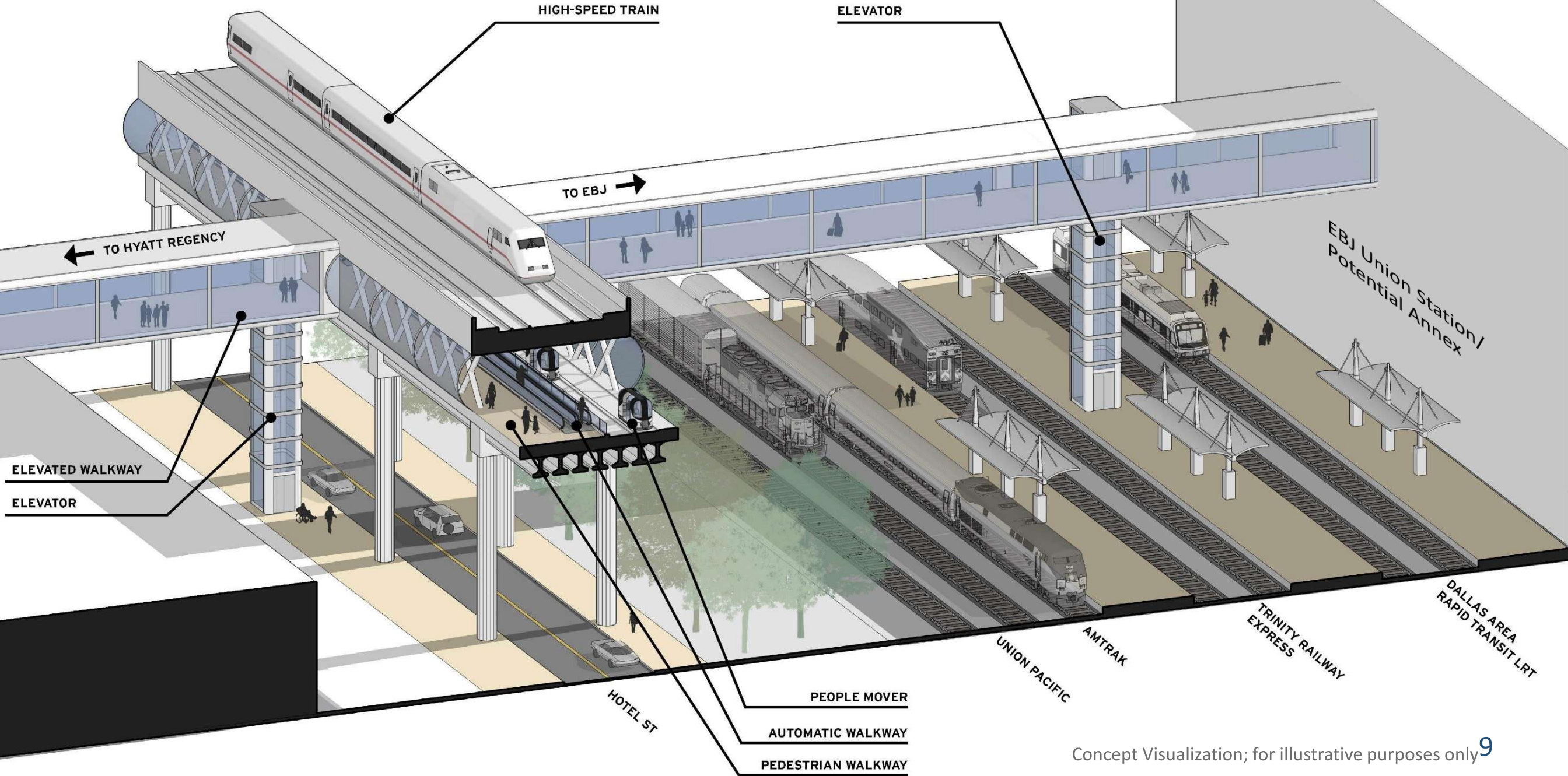
Alignment 2A Elevated - East of Hyatt Regency (Shown at 3/6/24 Dallas City Council)

**North Central Texas Council of Governments**

DALLAS-FORT WORTH HIGH-SPEED TRANSPORTATION CONNECTIONS I-30 CORRIDOR ALTERNATIVES

URBAN CENTER CONNECTION DALLAS 23 ALTERNATIVE ALIGNMENT

# Leveraging HSR to Create Connections

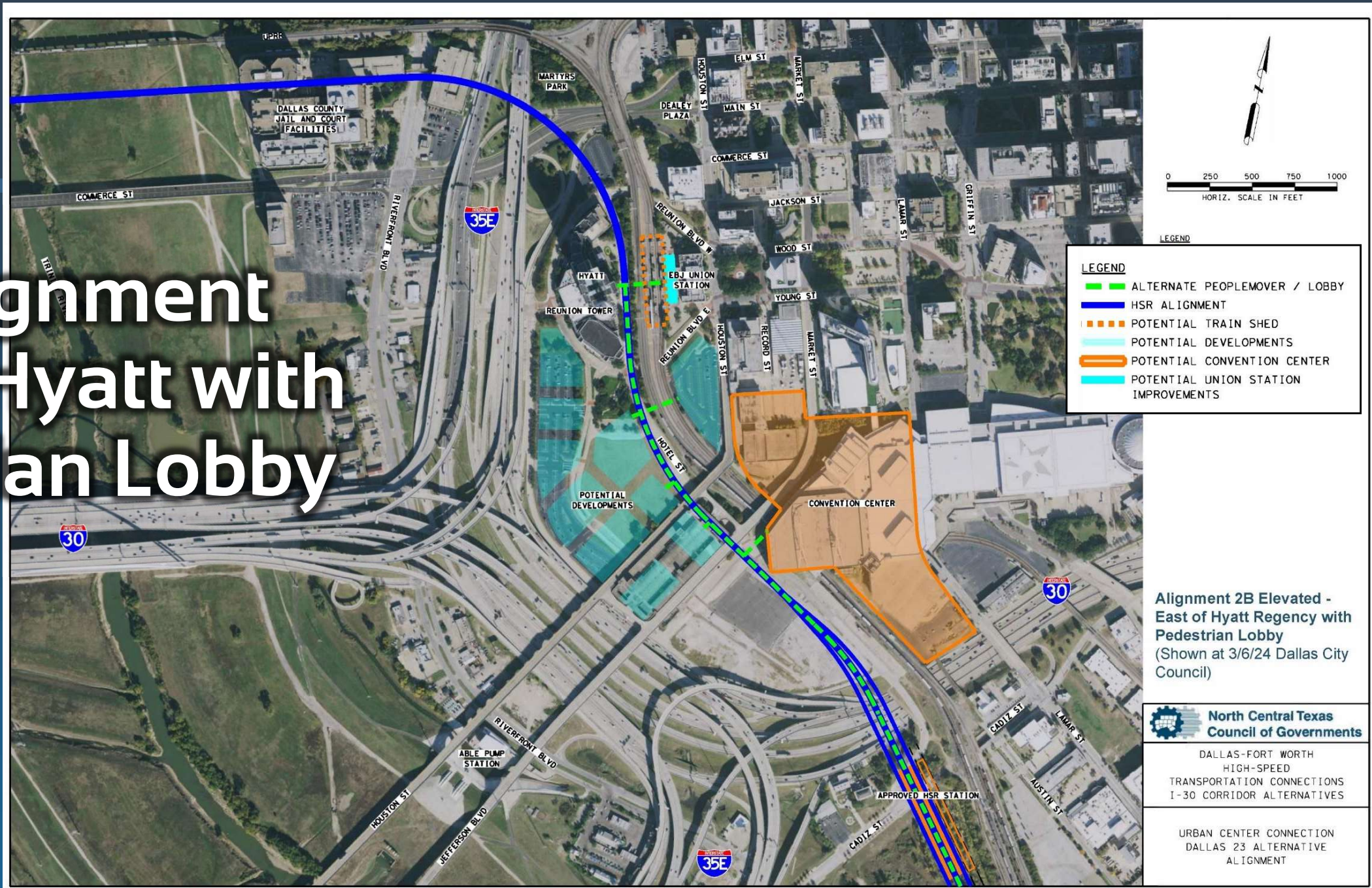


# Leveraging HSR to Create Connections



Concept Visualization; for illustrative purposes only

# HSR Alignment East of Hyatt with Pedestrian Lobby

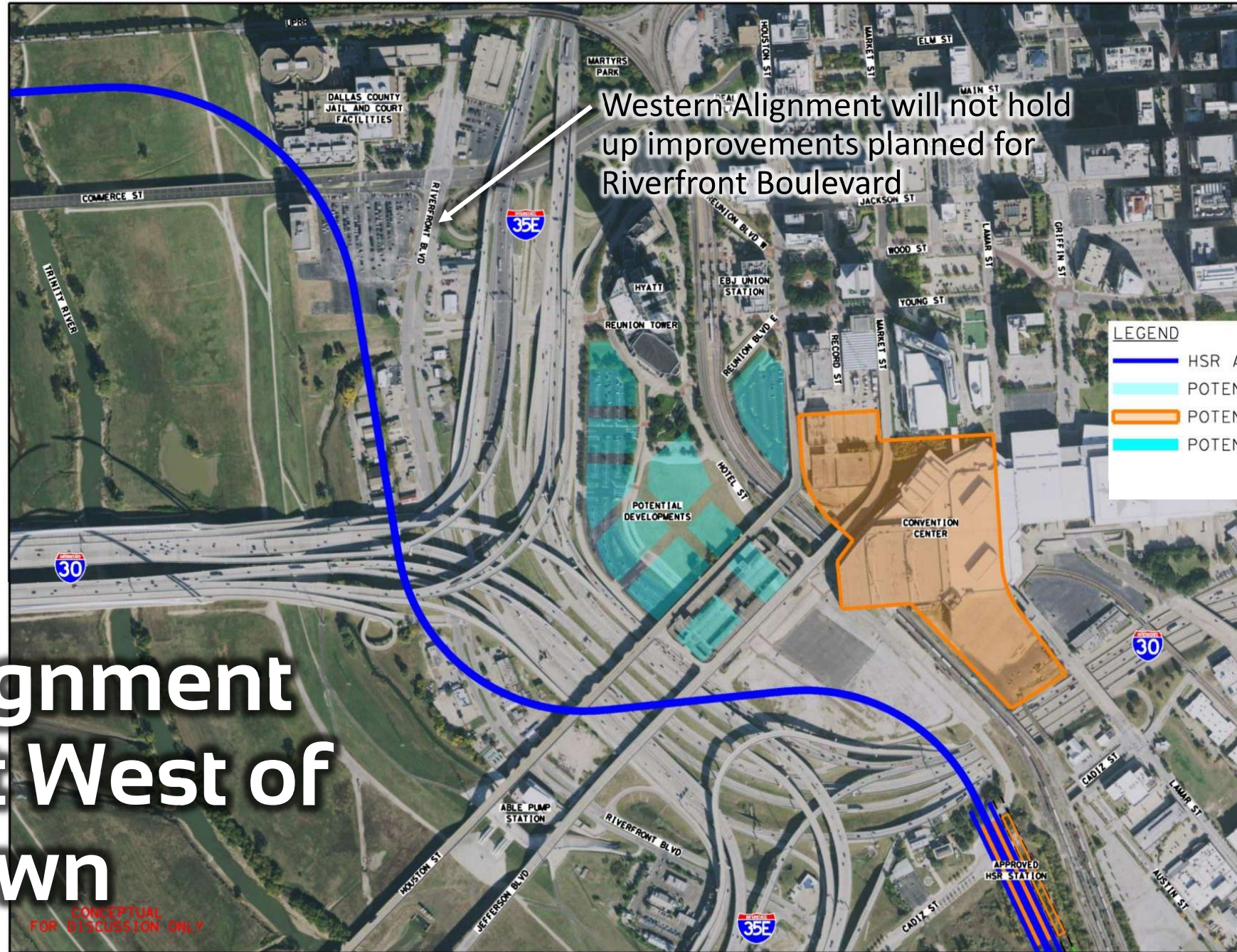


# Potential Connections between Points of Interest in Downtown Dallas

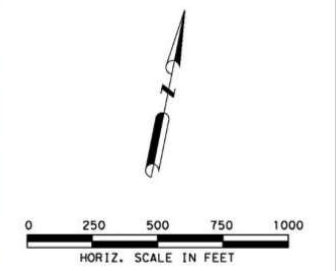
<b>Connections between Points of Interest</b>		<b>2B. Elevated - East of Hyatt Regency Hotel with Pedestrian Lobby (Shown at 3/6/24 Dallas City Council)</b>	<b>Family of Elevated Alignments West of Downtown (7/11/24 RTC Workshop)</b>
6	Hyatt Regency Hotel to Union Station	✓	✗
5	Convention Center to Union Station	✓	✗
4	Convention Center to Convention Center Hotels	✓	✗
3	High Speed Rail to Union Station	✓	✗
2	High Speed Rail to Convention Center Hotels	✓	✗
1	High Speed Rail to Convention Center	✓	?

Note: Connections between points of interest considered to be direct, air conditioned/comfortable, and ADA accessible

# HSR Alignment Concept West of Downtown



Western Alignment will not hold up improvements planned for Riverfront Boulevard



- LEGEND**
- HSR ALIGNMENT
  - POTENTIAL DEVELOPMENTS
  - POTENTIAL CONVENTION CENTER
  - POTENTIAL UNION STATION

CONCEPTUAL FOR DISCUSSION ONLY

CONCEPTUAL FOR DISCUSSION ONLY

North Central Texas Council of Governments

DALLAS-FORT WORTH HIGH-SPEED TRANSPORTATION CONNECTIONS I-30 CORRIDOR ALTERNATIVES

URBAN CENTER CONNECTION DALLAS 4H.11A ALTERNATIVE ALIGNMENT