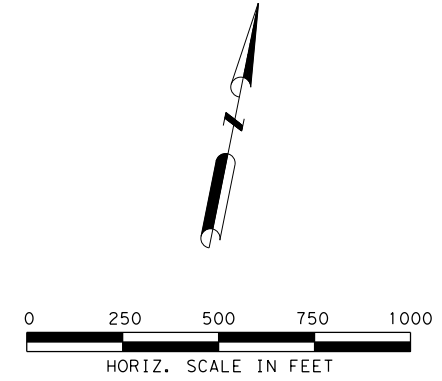
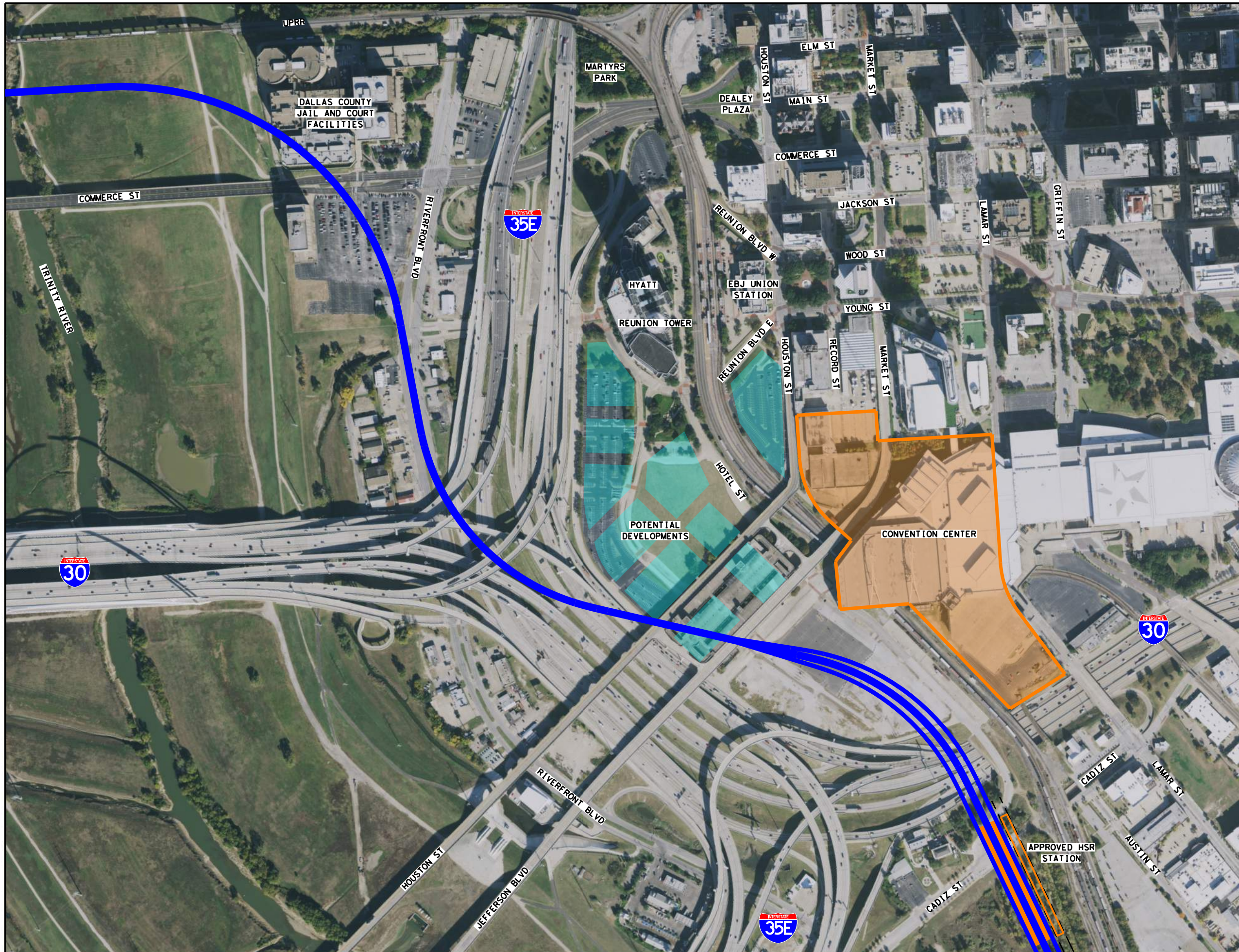




Conceptual High-Speed Rail Alignments near Downtown Dallas

Initial preparations by the North Central Texas Council of Governments
in advance of Regional Transportation Council Workshop on July 11, 2024

June 2024



- LEGEND**
- █ ALTERNATE PEOPLEMOVER / LOBBY
 - █ HSR ALIGNMENT
 - █ POTENTIAL TRAIN SHED
 - █ POTENTIAL DEVELOPMENTS
 - █ POTENTIAL CONVENTION CENTER
 - █ POTENTIAL UNION STATION IMPROVEMENTS



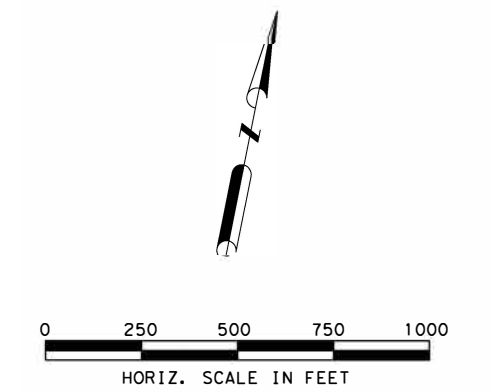
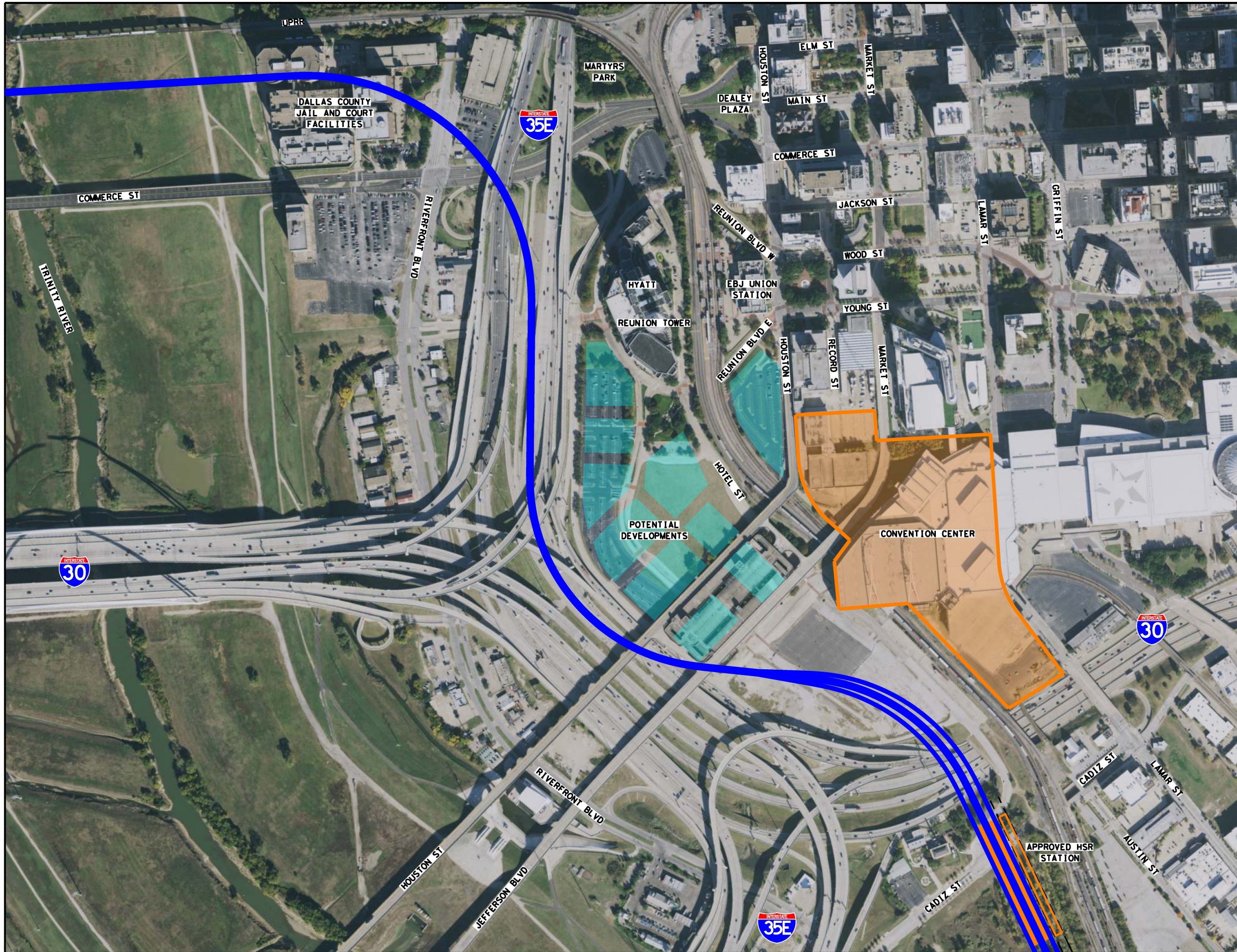
Not recommended for advancement as shown (6/26/2024)

Concept Alignment Only:
Further engineering refinement and partner coordination required to confirm feasibility



DALLAS-FORT WORTH
HIGH-SPEED
TRANSPORTATION CONNECTIONS
I-30 CORRIDOR ALTERNATIVES

URBAN CENTER CONNECTION
DALLAS 4H.4 ALTERNATIVE
ALIGNMENT



- LEGEND**
- █ ALTERNATE PEOPLEMOVEOVER / LOBBY
 - █ HSR ALIGNMENT
 - POTENTIAL TRAIN SHED
 - POTENTIAL DEVELOPMENTS
 - POTENTIAL CONVENTION CENTER
 - POTENTIAL UNION STATION IMPROVEMENTS

Concept Alignment Only:
 Further engineering refinement
 and partner coordination
 required to confirm feasibility



DALLAS-FORT WORTH
 HIGH-SPEED
 TRANSPORTATION CONNECTIONS
 I-30 CORRIDOR ALTERNATIVES

URBAN CENTER CONNECTION
 DALLAS 4H.1 ALTERNATIVE
 ALIGNMENT

**CONCEPTUAL
IN-PROGRESS
06/26/2024**

**CONCEPT NOT YET
ASSESSED FOR
ENGINEERING
FEASIBILITY AND
CONSTRUCTABILITY**

Google Earth

2000 ft

