



FORWARD OPERATING BASE EAGLE PASS SOUTH, TX



TEAM HOUSING
SOLUTIONS®

www.teamhousing.com

PRESENTED BY:

KATE CAVANAUGH

kcavanaugh@teamhousing.com

830.237.2461



Agenda

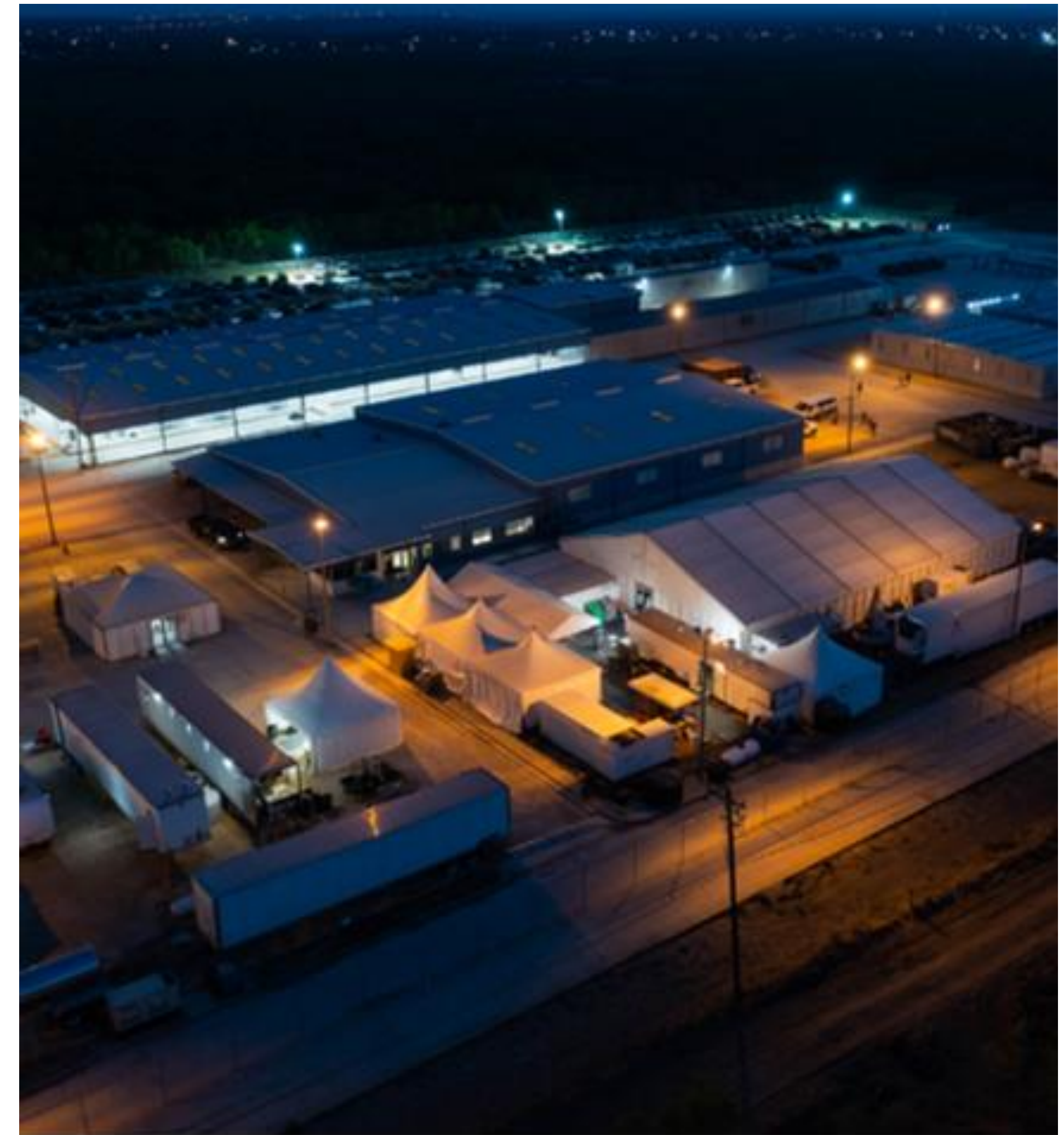
- **Objective**
- **Eagle Pass South Highlights**
- **Site Plan**
- **Proposed Buildings**





Objective:

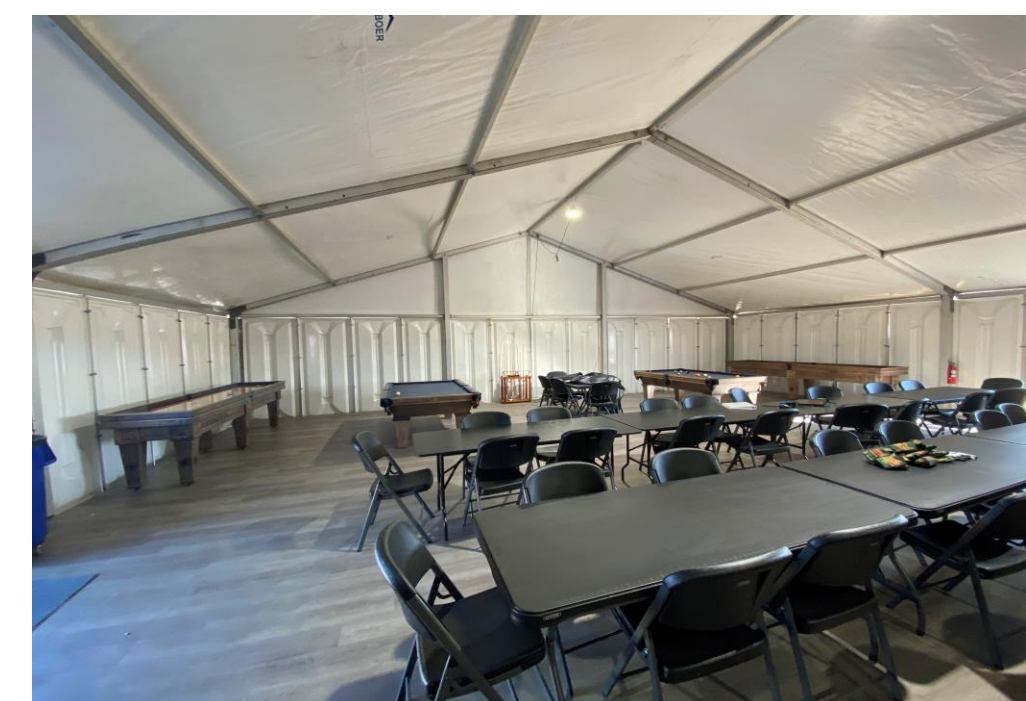
Relay the concept of the proposed Basecamp Buildings in Eagle Pass.





Eagle Pass South Highlights

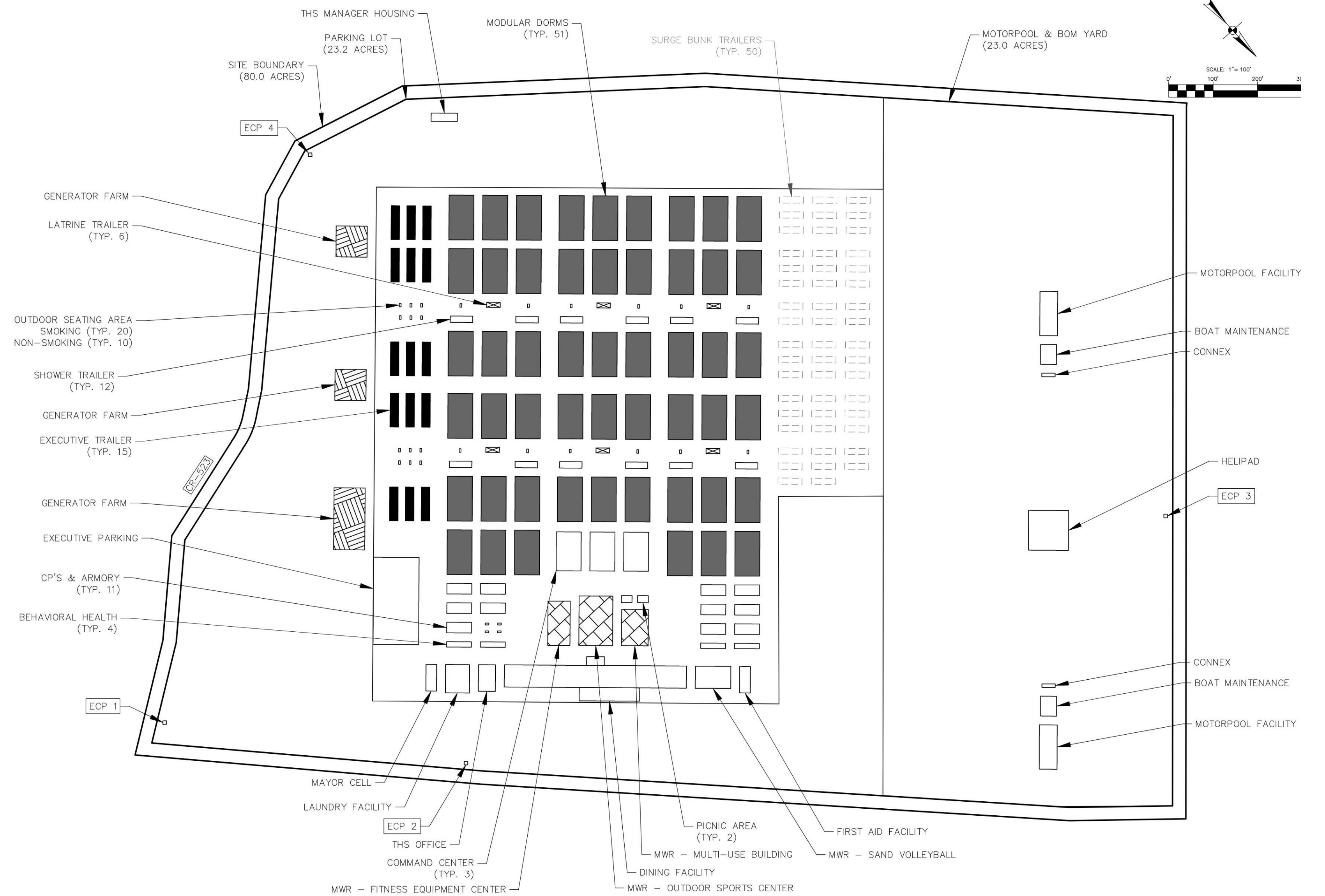
- 80 Acre Site
- 1800 PAX with 500 Surge Capability (3x Camp Walker)
- Single Occupancy Rooms (118 sq ft approx. per person)
- City Water, Sewer, and Shore Power
- Contingency Power Solution (Back Up Generators)
- 24/7 Meal Options
- Multi-Purpose Pavilion
- Office Capacity (3x Camp Alpha)





Site Plan

Updated 2.8.24





Proposed Buildings

- **Living Quarters**
 - Qty 51 Barracks/Dorms - 1,734 Total Rooms
 - Qty 15 - Executive Sleepers – 75 Total Rooms
- **Ablution Trailers**
 - Qty 6 Latrine Trailers
 - Qty 12 Shower Trailers
- **Command Center**
 - Qty 3 - 72'x60' Office Spaces
- **Dining Facility (DFAC)**
 - Qty 1 – 700 PAX Sitting Capacity at 15 SF/PAX
- **MWR**
 - Qty 1 – Fitness Equipment Center
 - Qty 1 - Multiuse Building (Lounge, Library, Arcade)
- **Outdoor Recreation**
 - Qty 1: Outdoor Shaded Pavilion (Basketball Hoop, Pickle Ball, Grills, Picnic Tables)
 - Qty 1: Volleyball Court
- **Behavioral & Health + Chaplains**
 - Qty 4 – 12' x 60' Office Space
- **Mayor Cell**
 - Qty 1 – 24' x 60'
- **CPs & Armory**
 - Qty 11 – 24' x 60' Office Space
- **First Aid**
 - Qty 1 – 24' x 60'
- **Laundry Facility**
 - Qty 1 – 48' x 60'
- **Motorpool**
 - Qty 2 – 100' x 40' (3 Bays, Concrete Pad)
 - Qty 2 – 36' x 45' Boat Maintenance
- **Helipad**
 - Qty 1 – Concrete Pad



Timeline

Phase 1 IOC	Phase 2	Phase 3	Phase 4	Phase 5	Phase 6 FOC
4/25/2024	5/30/2024	7/5/2024	8/11/2024	9/16/2024	10/22/2024
73	108	144	181	217	253
302	604	925	1,231	1,537	1,809
On Day 73, 302 PAX can move into EPS.					
8 Dorms (34 rooms each) 6 Executive Suites (5 rooms each) DFAC 1 Command Center 1 First Aid Facility 2 CP's 1 Mayor Cell 1 Outdoor Shaded Pavillion 2 Shower Trailers 2 Restroom Trailers 1 Laundry Trailer (temp.) 1 THS Office	16 Dorms (34 rooms each) 12 Executive Suites (5 rooms each) 2 Command Centers 4 CP's 1 Weights + Cardio 4 Shower Trailers THS Manager Housing	25 Dorms (34 rooms each) 15 Executive Suites (5 rooms each) 3 Command Centers 6 CP's 1 Multiuse MWR 1 Laundry Facility 6 Shower Trailers 3 Restroom Trailers	34 Dorms (34 rooms each) 15 Executive Suites (5 rooms each) 1 Motor Pool (3 bays) 8 CP's 4 Behavioral & Health - Chaplains 8 Shower Trailers 4 Restroom Trailers	43 Dorms (34 rooms each) 15 Executive Suites (5 rooms each) 10 CP's 1 Volleyball Court 1 Boat Maintenance 10 Shower Trailers 5 Restroom Trailers	51 Dorms (34 rooms each) 15 Executive Suites (5 rooms each) 11 CP's 2 Boat Maintenance 2 Motor Pool 1 Helipad 12 Shower Trailers 6 Restroom Trailers



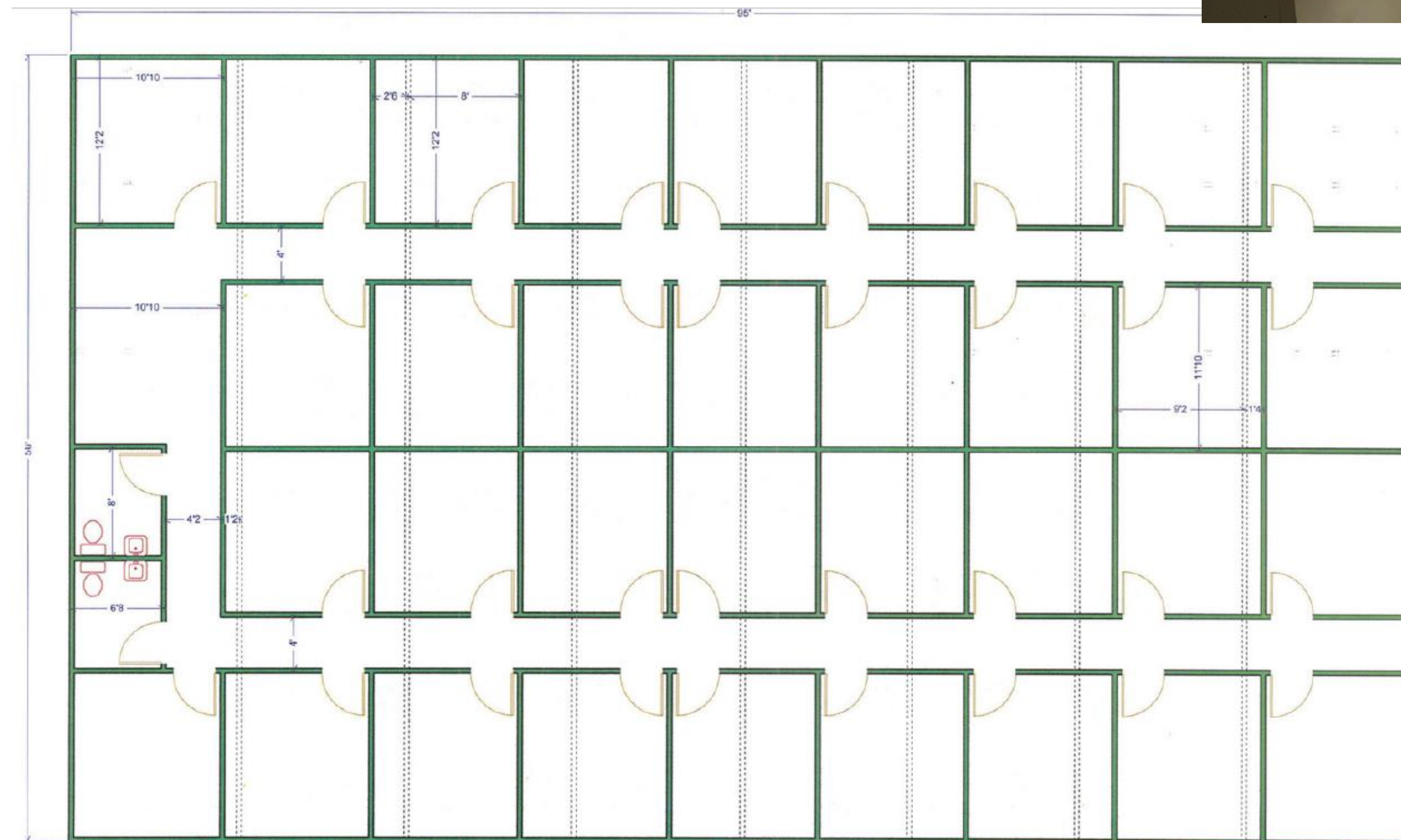
Modular Dorms – Living Quarters

Qty 51 - 8-plex Modular Dorm

- 34 rooms per dorm
- 2 Restrooms per dorm
- Single Occupancy
- 118 SF min per room

Room Specs

- Single Occupancy
- Security Door Lock
- Twin Bed
- Clothing Rack

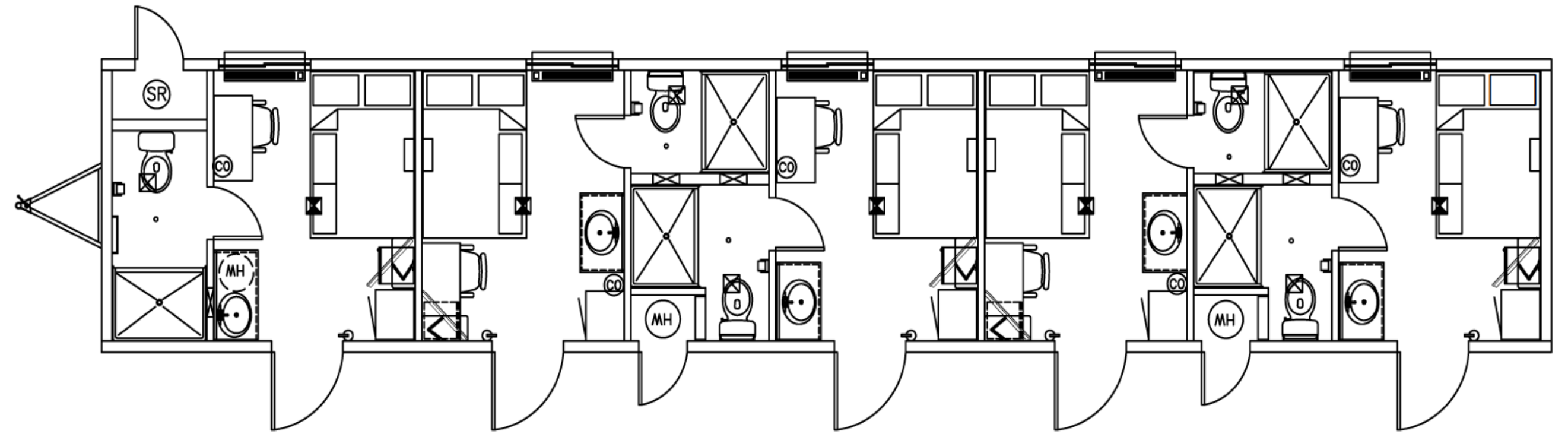




Executive Trailer – Living Quarters

**Qty 15 - Single Wide Modular with 5 Bedrooms
(75 Bedrooms Total Proposed)**

- Security Door Locks
- In-suite Bathroom (5 Restrooms per Building)
- Workstation





Ablution Trailers

6 Latrine Trailers

- 10 toilets per trailer
- Climate Controlled
- Security Door Locks
- 7:1 Soldier to Toilet Ratio (Ratio includes all restrooms)

12 Shower Trailers

- 16 showers per trailer
- Climate Controlled
- Security Door Locks
- 9.3:1 Soldier to Shower Ratio

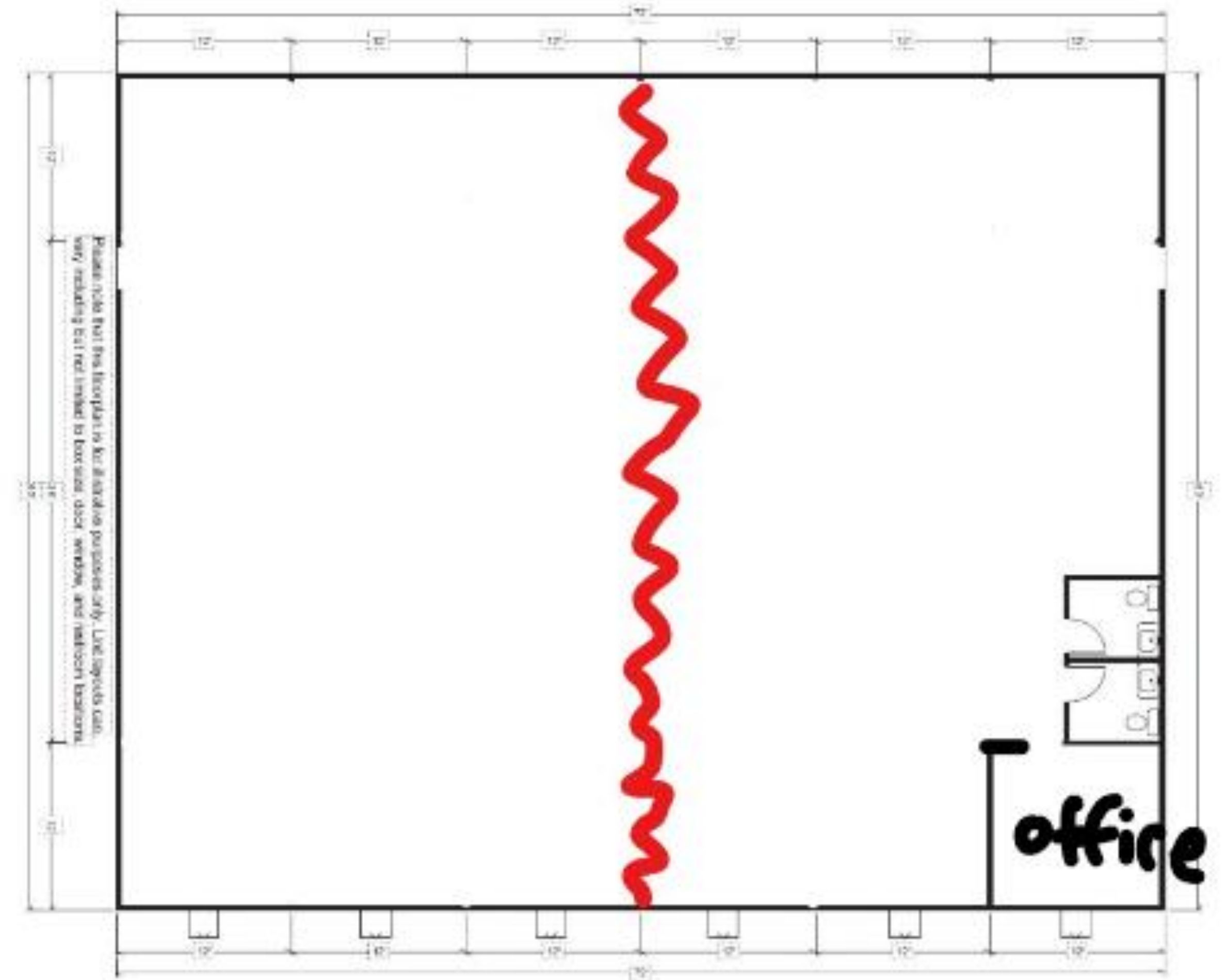




Command Center - Type 1

Qty 1 - Command Center

- Specs: 6-plex modular buildings
- 1 Office
- 2 Restrooms per Building
- Accordion Wall
- Dimensions: 72' x 60'

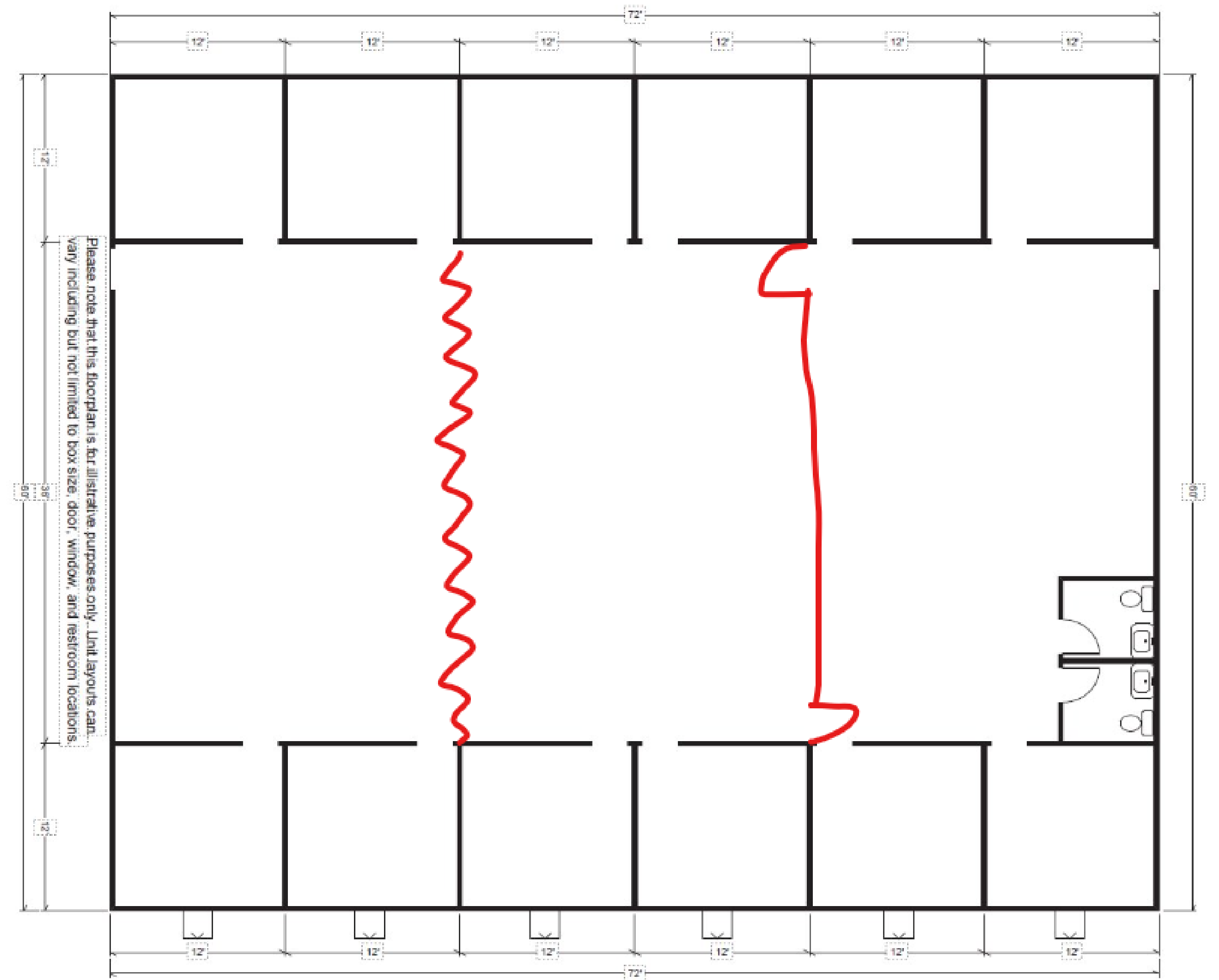




Command Center - Type 2

Qty 2 - Command Center

- Specs: 6-plex modular buildings
- 12 Offices
- 2 Restrooms per Building
- 1 Accordion Wall
- 1 Dividing Wall
- Dimensions: 72' x 60'

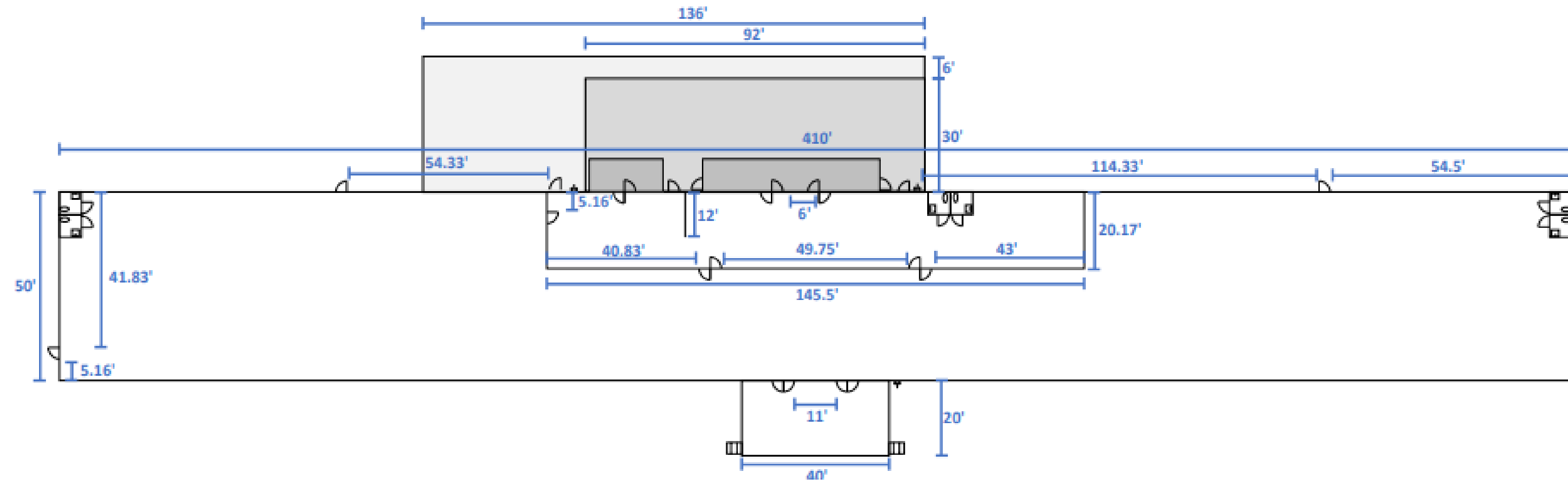




Dining Facility

Qty 1 – DFAC

- Specs: Modular Building
- Dimensions: 15,000 sq ft sitting area approx.
- Includes a wooden deck
- 700 Sitting Capacity
- Chef Driven Meals
- Buffet Style Meals



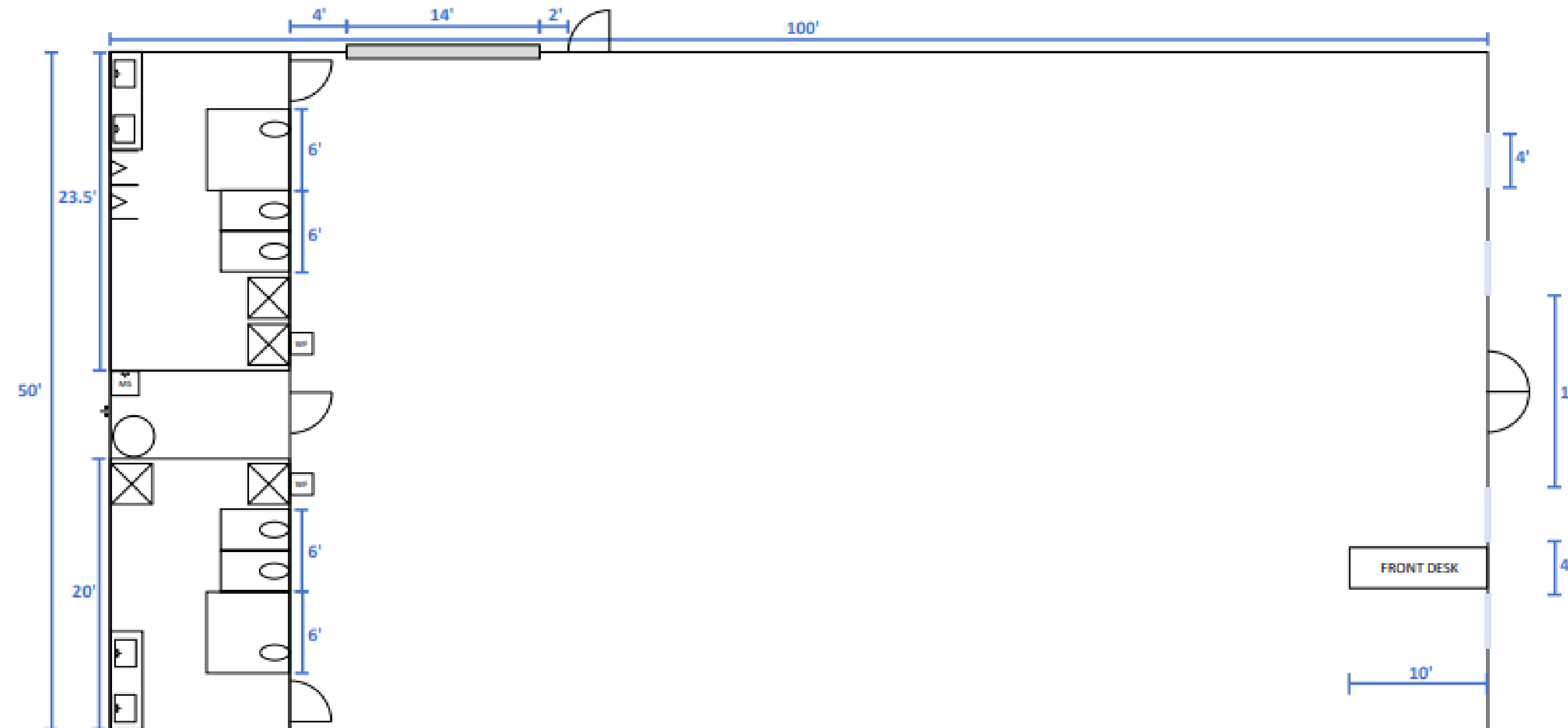
*Floorplan is conceptual. The DFAC will include straight tables instead of round.



MWR - Fitness Equipment Center

Qty 1 - Weights + Cardio Center

- Tent Facility or Permanent Structure
- Dimensions: 50' x 100'
- Industrial Fitness Equipment



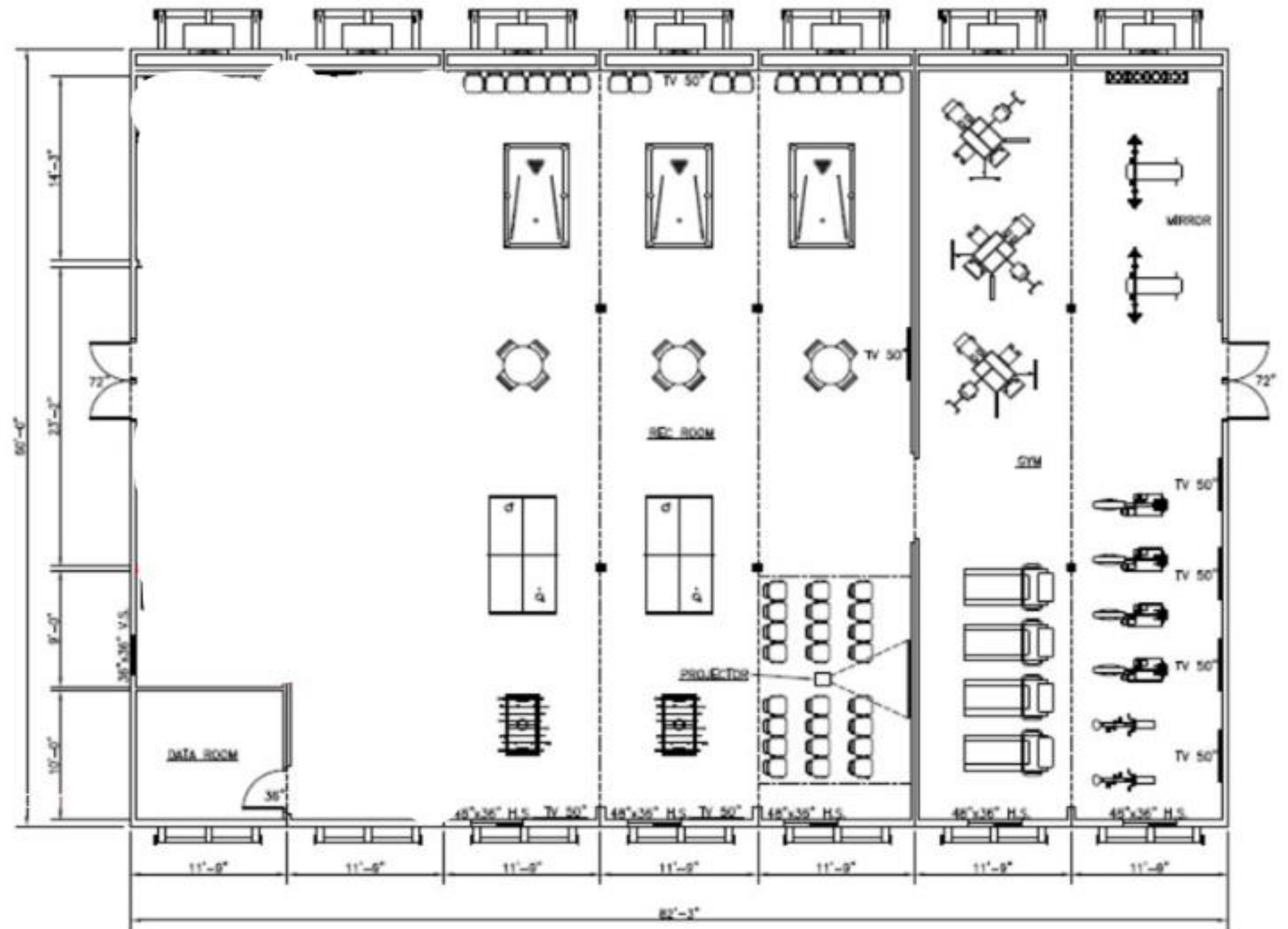


MWR - Multiuse Building

Qty 1 – Lounge/ Library / Arcade

- Specs: 7-plex modular building
- Dimensions: 82' x 60'
- Incorporates Table Games, Movie

*Floorplan is conceptual. The MWR Multiuse Building will not include cardio equipment.



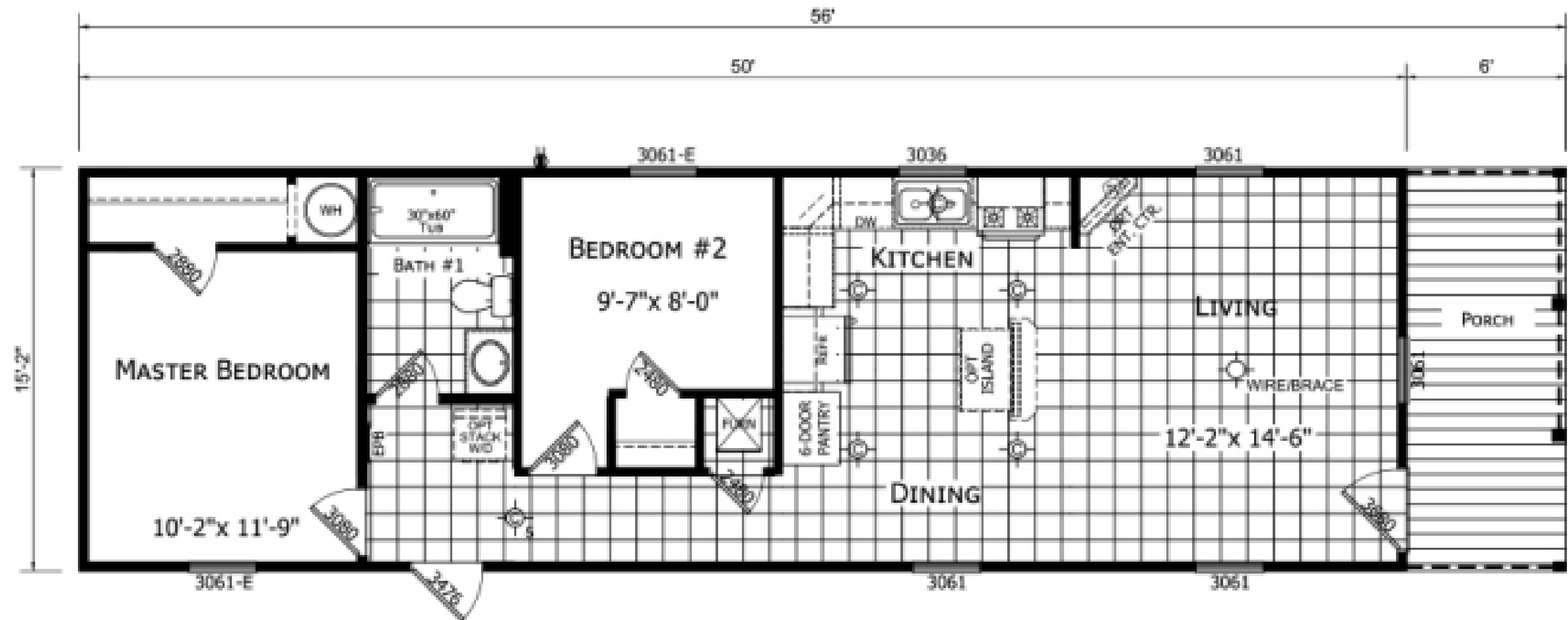


THS Manager Housing

Qty 1 –

Specs: 1-plex modular building

- Dimensions: 12' x 60'





MWR - Outdoor Sports Center

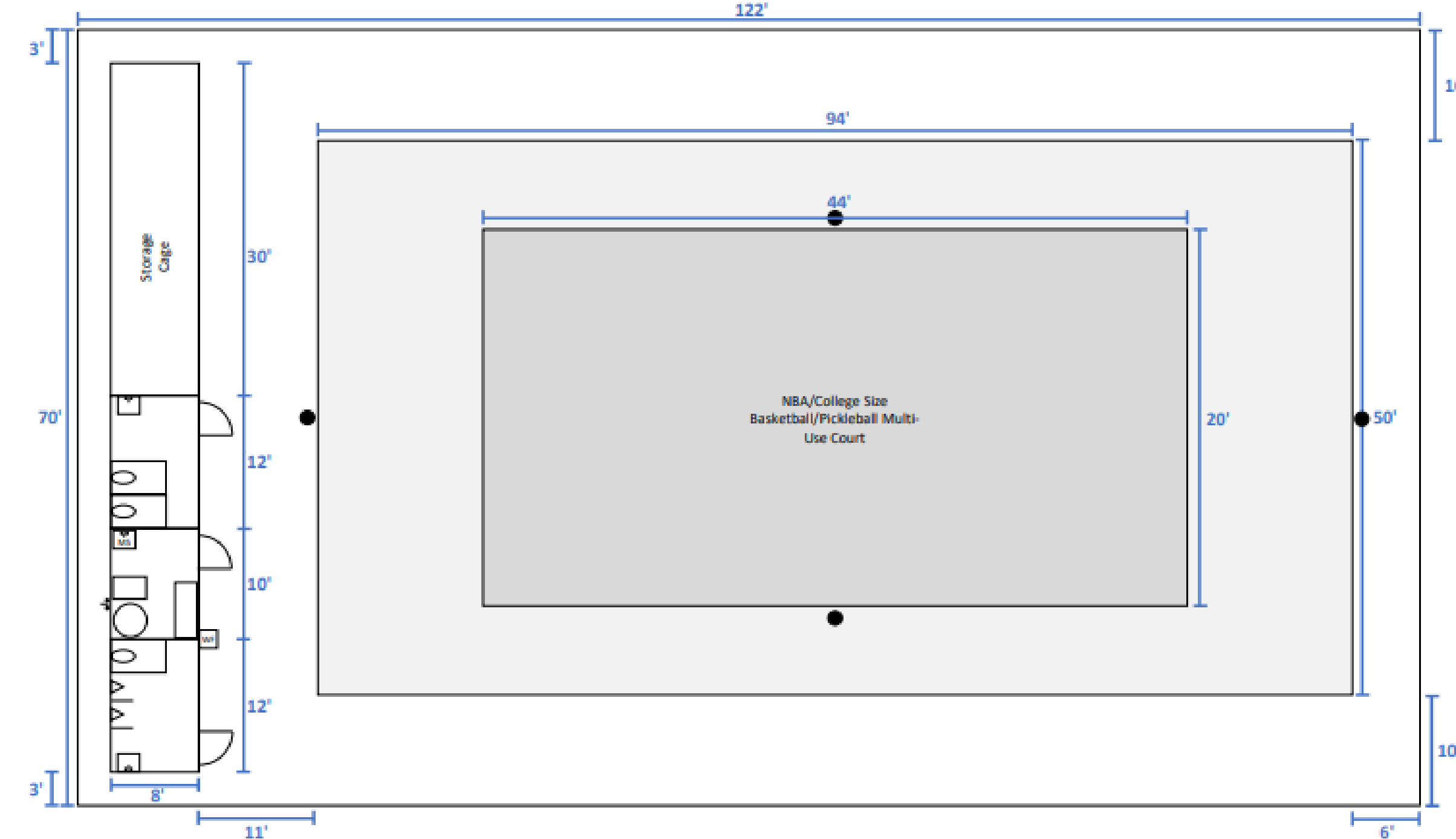
Qty 1 – Sports Center / Outdoor Shaded Pavilion

- Dimensions: 76' x 112'
- High Ceilings for Basketball
- Grills
- Picnic Tables



Qty 1 – Outdoor Volleyball

- Sand Volleyball Court



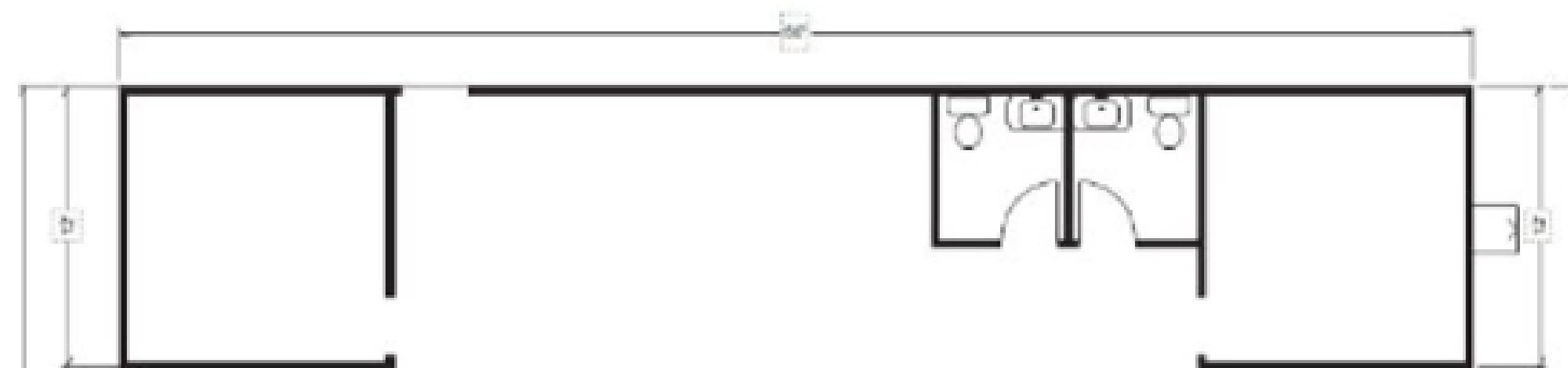


Behavioral Health

Qty 4 – Behavioral, Health, & Chaplains

Office

- Specs: 1-plex modular building
- 2 Private Offices, each approx. 144 SF
- Dimensions: 12' x 60'
- 2 Restrooms

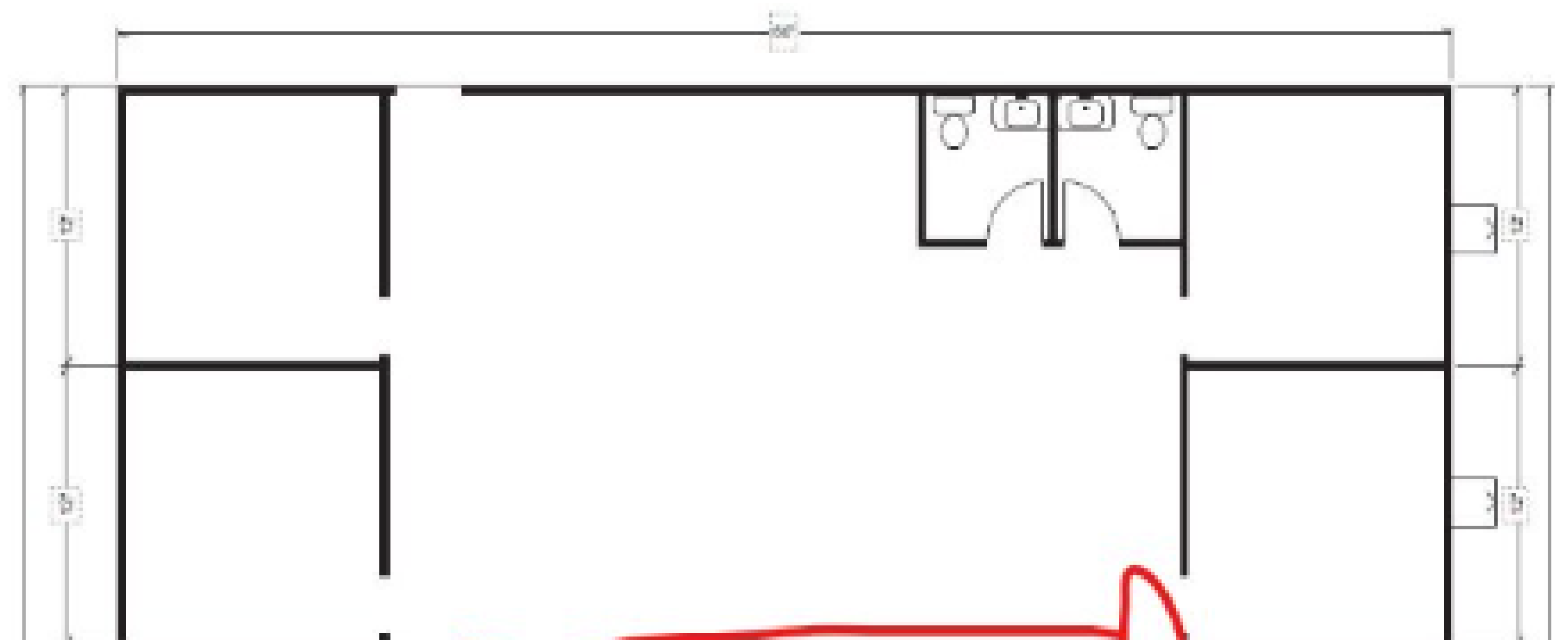




Mayor Cell

Qty 1 – Mayor Cell

- Specs: 2-plex modular building
- 2 Private Offices, each approx. 144 SF
- Dimensions: 24' x 60'
- 2 Restrooms

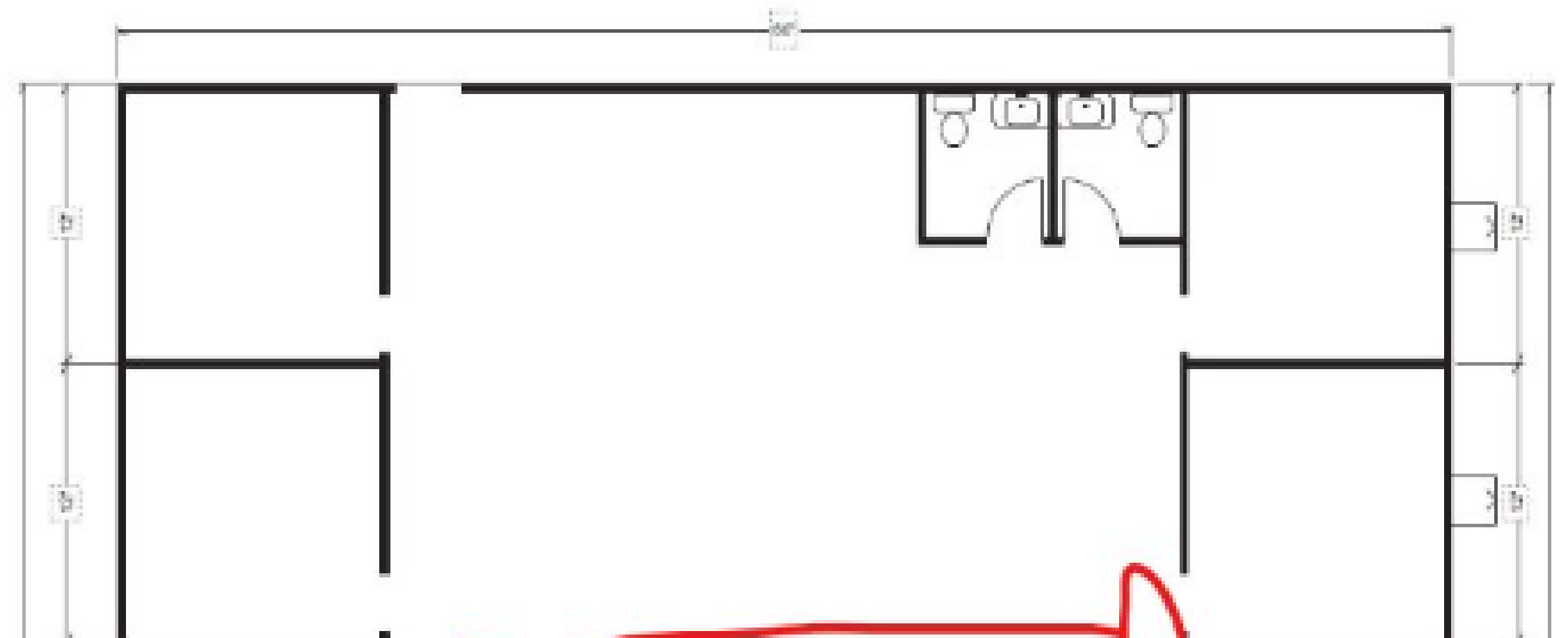




CP's & Armory

Qty 11 – CP's & Armory

- Specs: 2-plex modular building with reinforced floors.
- 4 Private Offices per building, each approx. 144 SF
- Dimensions: 24' x 60'
- 2 Restrooms

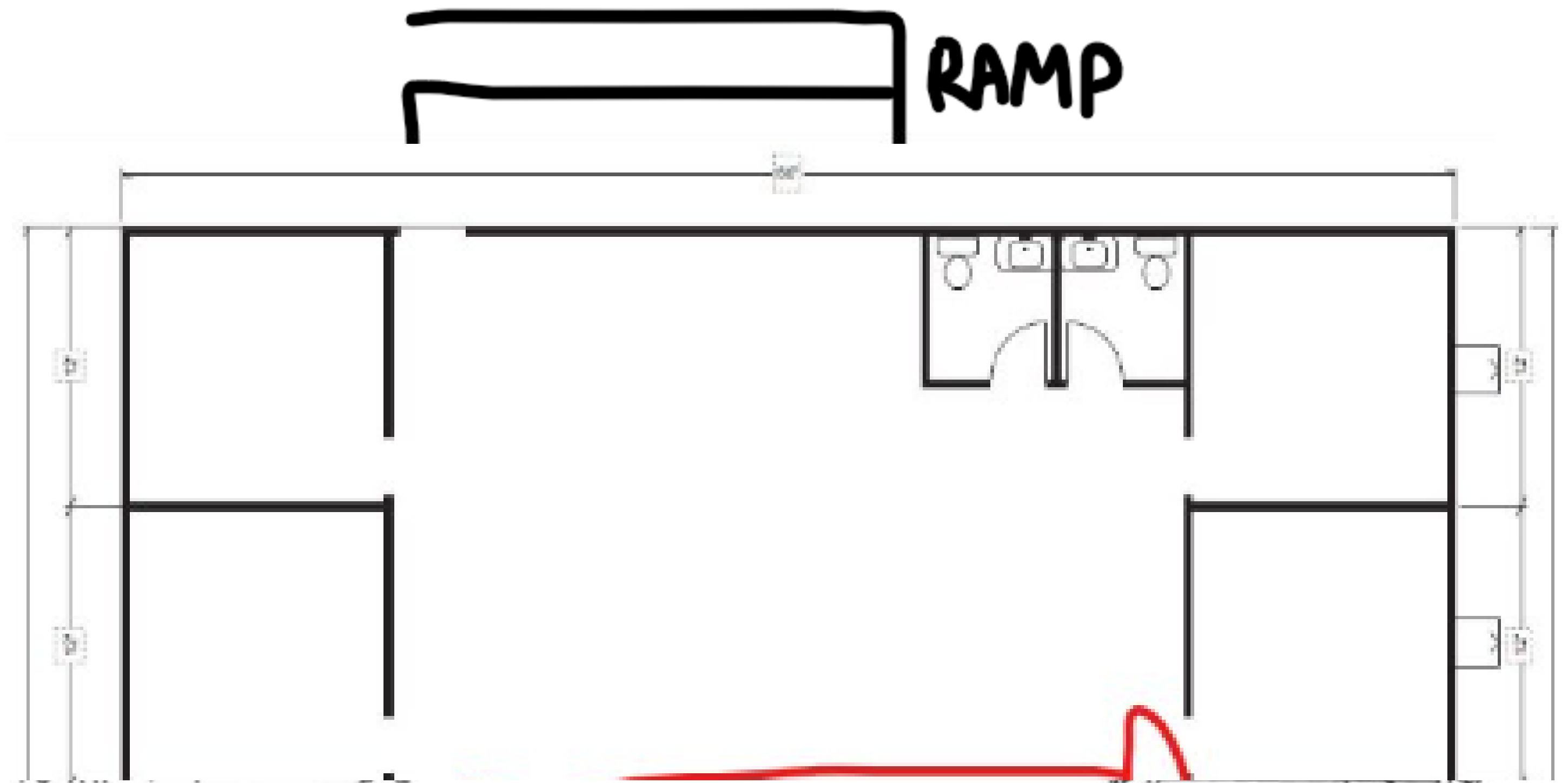




First Aid Facility

Qty 1 – First Aid Facility

- Specs: 2-plex modular building
- 4 Private Offices, each approx. 144 SF
- Ramp Entrance Included
- Dimensions: 24' x 60'
- 2 Restrooms





Laundry Facility

Qty 1 – Laundry Facility

- Specs: 4-plex modular building
- Dimensions: 48' x 60'



Fluff & Fold

- Daily 8 hr. Laundry Service
- 48 washers / 48 dryers

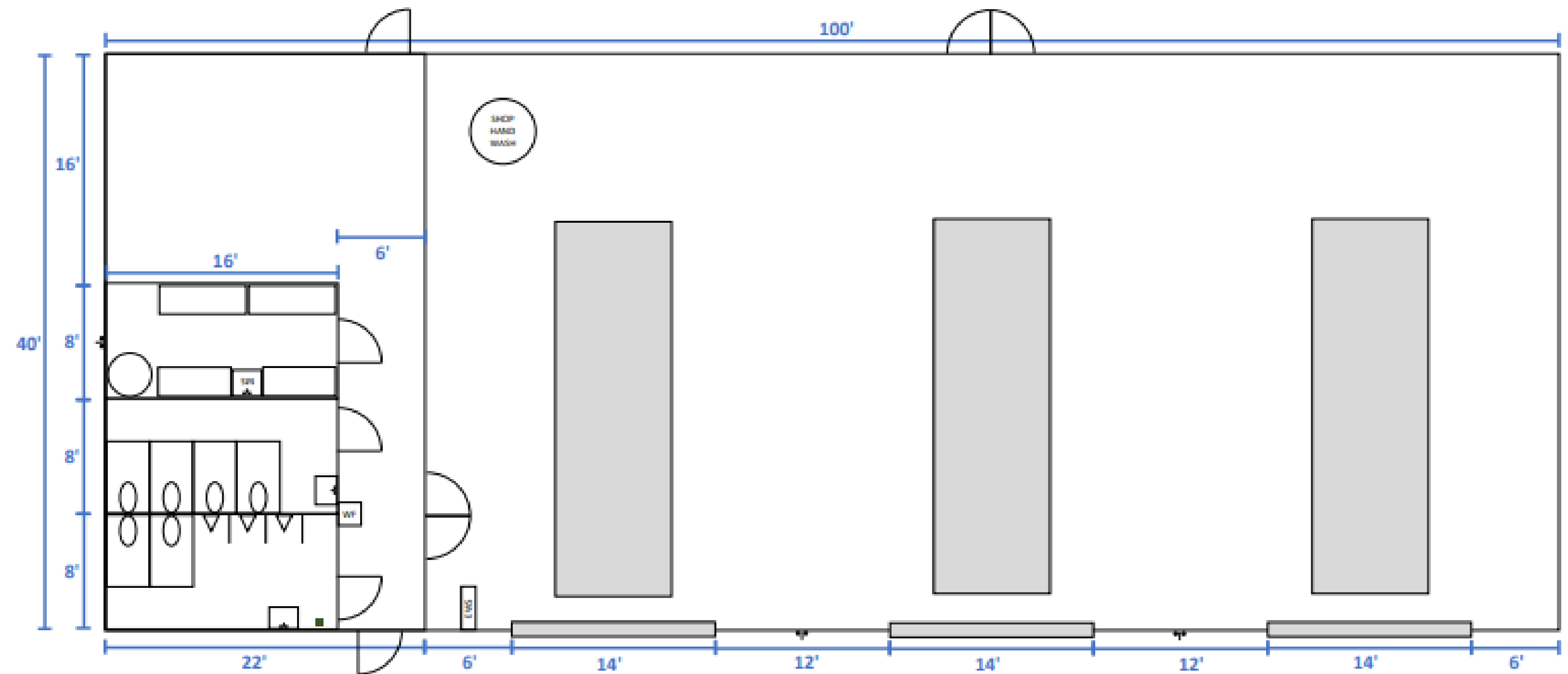




Motorpool Facility

Qty 2 – Large Motorpool

- Specs: 3 bays, 8" Concrete Pad
- Permanent Structure Proposed
- Indoor Bathrooms
- Eye Wash Station
- Approx. 10 Lockers & Benches
- Dimensions: 40' x 100' x 20'
- 3 Doors 14' wide



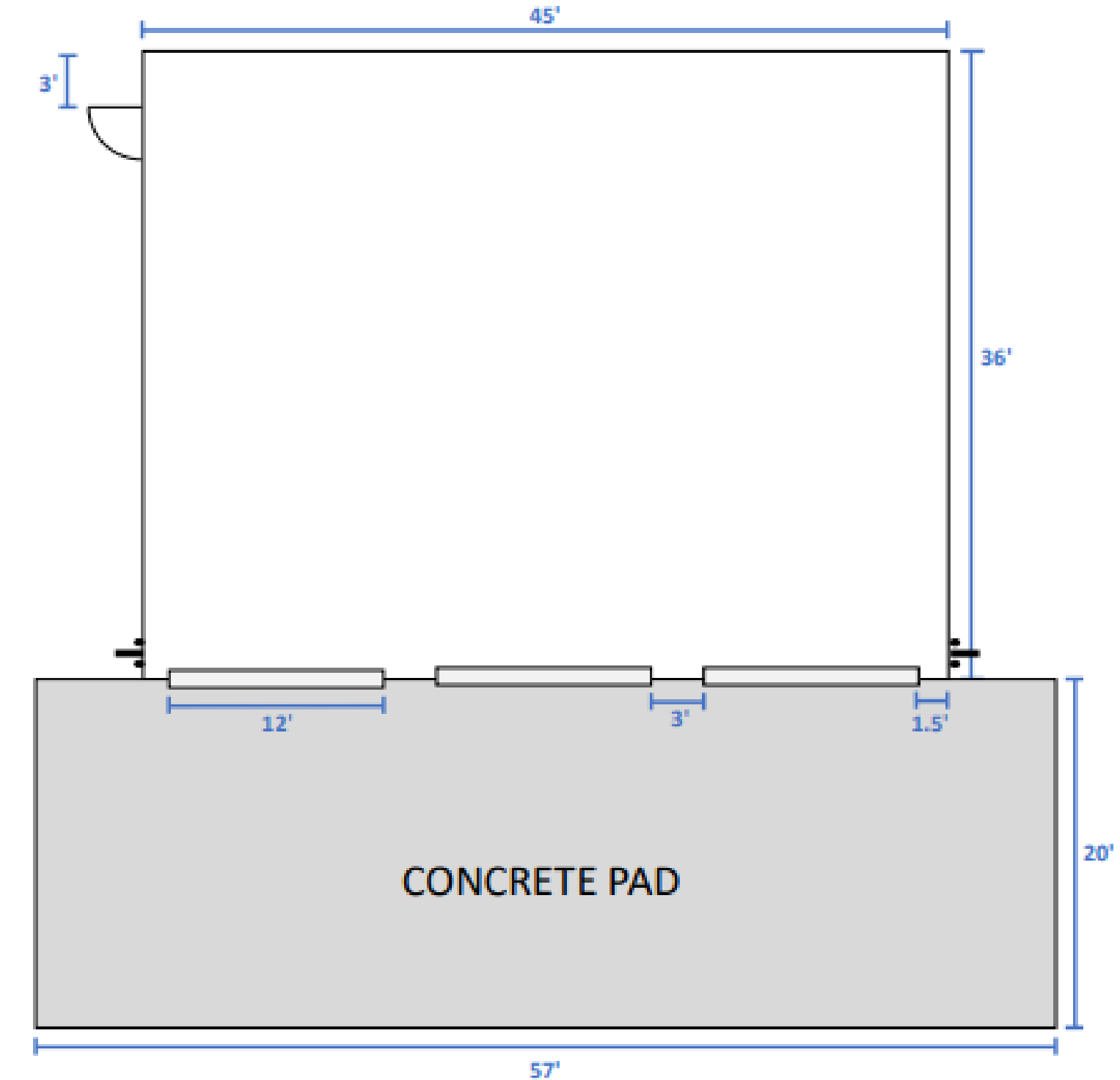


Motorpool Facility & BOM Yard

Qty 2 – Boat Maintenance

- Specs: 3 bays, 8" Concrete Pad
- Permanent Structure Proposed
- Dimensions: 36' x 45' x 18'
- 3 Door 12'x15'

23 Acres for
Motorpool & BOM
Yard

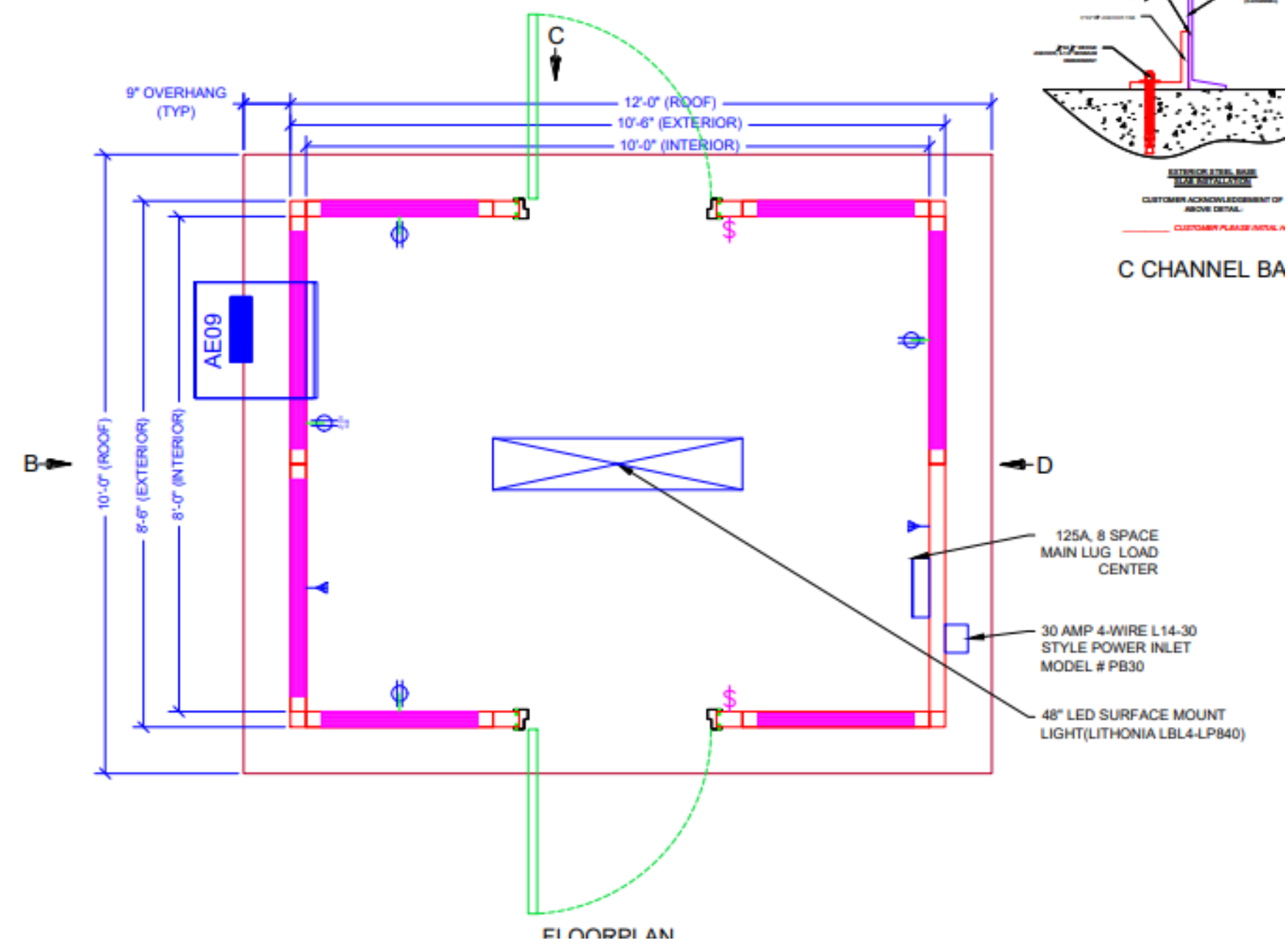




Guard Shacks

Qty 4 – Guard Shack Concrete Pads

- TMD is providing Guard Shacks



Qty 8 – Guard Shack Port A Cans



Parking Lot

Parking Lot

- 23.5 Acres
- Railroad Ties
- VIP Parking Section
- General Parking Section
- Motor Pool Parking Section





Helipad

Qty 1 – FAA Regulation Helipad

- Specs: Concrete Pad
- 90'x90' Pad
- Green FAA perimeter lights
- Perimeter downward flood lighting
- LED lighted Windcone
- LED 3 color Heliport Beacon.
- Painted “H” and weight markings and rotor diameter markings.





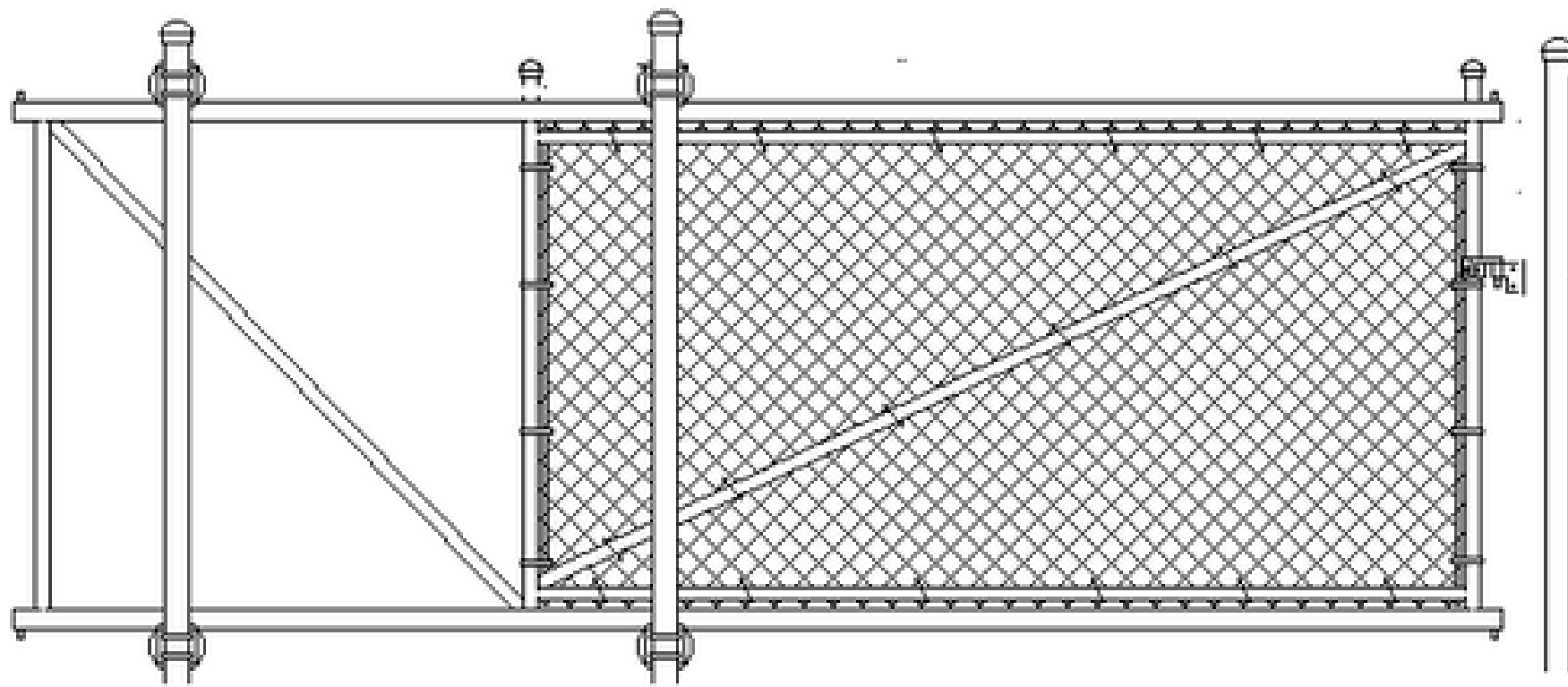
Comparison- Walker and Eagle Pass South

			WALKER			EAGLE PASS SOUTH
Acres	✓	22		✓	80	70 + 10 for BOM yard & Helipad
Engineered Site Prep	✓	1	Caliche base	✓	1	Engineered drainage Crushed limestone base
Capacity	✓	700		✓	1800	Extra 500 PAX surge capability
Dorms	✓	10	7-plex 260 rooms total	✓	51	8-plex 1,734 rooms total
Executive Suites	✓	3	15 rooms total	✓	15	75 rooms total
Dorms Occupancy	✓	Double	120 sf rooms 275 rooms total	✓	Single	118 sf rooms 1,809 Total Rooms
Shower Heads	✓	88	11 Shower Trailers 8 heads	✓	192	12 Shower Trailers 16 heads Individual Shower Stalls
Restroom Holes	✓	80	8 Restroom Trailers 10 holes	✓	293	11 Restroom Trailers 10 holes + Dorms & Executive Suites Other indoor restrooms
DFAC	✓	1	Tent	✓	1	Modular with lounge deck 20' x 40'
Motor Pool	✓	1	Existing Permanent Structure	✓	2	Permanent Enclosed Structure with indoor storage
First Aid Facility	✓	1	Tent	✓	1	Modular 2-plex with private offices
MWR Weights + Cardio	✓	1	Tent	✓	1	Permanent Structure with indoor restrooms
MWR Lounge, Library, Arcade	✓	2	Tent	✓	1	Modular Multiuse Floorplan with indoor restrooms
MWR Outdoor Shaded Pavilion	✓	1	Existing Permanent Structure	✓	1	Multiuse Design Permanent Structure with Basketball Hoops, Pickle ball
Command Center	✓	1	Existing Permanent Structure	✓	3	Modular 6-plex Custom floorplan
Office Space (Behavioral, Health, Chaplains)	✓	3	Modular 1-plex	✓	4	Modular 1-plex
Laundry Facility	✓	1	Trailer 12 washers / 12 dryers	✓	1	Modular 4-plex 48 washers / 48 dryers
CP's	✓	1	Existing Permanent Structure	✓	11	Modular 2-plex with private offices reinforced floors climate controlled
ECP	✓	1		✓	4	Concrete pads TMD provides Guard Shacks
City Water	✓	1		✓	1	
Engineered Water	✓	1		✓	1	
City Sewer	✗			✓	1	
Engineered Sewer	✗			✓	1	
Shore Power	✗			✓	1	
Boat Ramp Access	✗			✓	1	Road access available to boat ramp located on the Rio Grande River
Helipad	✗			✓	1	Concrete Helipad
Boat Maintenance / Specialized Equipment Building	✗			✓	2	Roll Up Door Concrete pad Hose Bibb
ECP Sliding Gate	✗			✓		à la carte
ECP Lift Arm	✗			✓		à la carte
Camera Surveillance System	✗			✓		à la carte



A la carte

ECP Sliding Gate



THS proposes Qty. 2 sliding gates on the main ECPs to enhance security.

ECP Lift Arm



THS proposes Qty. 2 lift arms on the main ECPs to enhance security.

Security Cameras Surveillance



THS propose installing surveillance cameras to enhance the security.



We look forward to hearing your feedback.



TEAM HOUSING
— SOLUTIONS® —