

Appendix – Examples of Truss and Roof Failures and Deficiencies



Item A: Incomplete plate connection.



Item B: Fully detached plates.



Item C: Web chord broken (likely during construction).



Item D: Bottom chord failure at large knot.



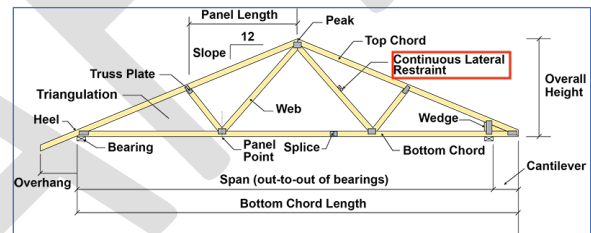
Item E: Truss plate peeling (maximum gap of plate allowed = 1/32", TPI 1-2014).



Item F: Truss plate not extending high enough at bearing location (beyond middle depth of the top chord at a minimum)



Item G: Example of short truss plate causing cross grain tension failure of truss top chord.



Item H: Continuous lateral restraint on a web member, typically required on 2x compression members longer than 6 feet.



Item I: Evidence of ponding, dark stains from standing water away from drainage systems.



Item J: Primary roof drain next to secondary roof scupper. It is not required that they be next to each other.