

Return of Organization Exempt From Income Tax

OMB No. 1545-0047

Form 990

Under section 501(c), 527, or 4947(a)(1) of the Internal Revenue Code (except private foundations)
Do not enter social security numbers on this form as it may be made public.
Go to www.irs.gov/Form990 for instructions and the latest information.

2022

Open to Public Inspection

Department of the Treasury
Internal Revenue Service

A For the 2022 calendar year, or tax year beginning and ending

B Check if applicable:
 Address change
 Name change
 Initial return
 Final return/terminated
 Amended return
 Application pending

C Name of organization: **Conservative Partnership Institute**
 Doing business as:
 Number and street (or P.O. box if mail is not delivered to street address) Room/suite: **300 Independence Ave SE**
 City or town, state or province, country, and ZIP or foreign postal code: **Washington, DC 20003**

D Employer identification number: **82-1470217**

E Telephone number: **(202) 742-8988**

F Name and address of principal officer: **Edward Corrigan same as C above**

G Gross receipts: **36,45,912.**

H(a) Is this a group return for subordinates? Yes No
H(b) Are all subordinates included? Yes No
 If "No," attach a list. See instructions.

I Tax-exempt status: 501(c)(3) 501(c) () (insert no.) 4947(a)(1) or 527

J Website: **www.cpi.org**

K Form of organization: Corporation Trust Association Other

L Year of formation: **2017** **M** State of legal domicile: **DE**

H(c) Group exemption number

Part I Summary		Prior Year	Current Year
Activities & Governance	1 Briefly describe the organization's mission or most significant activities: See Schedule O for complete mission statement.		
	2 Check this box <input type="checkbox"/> if the organization discontinued its operations or disposed of more than 25% of its net assets.		
	3 Number of voting members of the governing body (Part VI, line 1a)	3	7
	4 Number of independent voting members of the governing body (Part VI, line 1b)	4	4
	5 Total number of individuals employed in calendar year 2022 (Part V, line 2a)	5	31
	6 Total number of volunteers (estimate if necessary)	6	4
	7a Total unrelated business revenue from Part VIII, column (C), line 12	7a	-200,796.
b Net unrelated business taxable income from Form 990-T, Part I, line 11	7b	0.	
Revenue	8 Contributions and grants (Part VIII, line 1h)	45,027,954.	35,715,410.
	9 Program service revenue (Part VIII, line 2g)	653,505.	859,526.
	10 Investment income (Part VIII, column (A), lines 3, 4, and 7d)	2,892.	976.
	11 Other revenue (Part VIII, column (A), lines 5, 6d, 8c, 9c, 10c, and 11e)	23,379.	-178,458.
	12 Total revenue - add lines 8 through 11 (must equal Part VIII, column (A), line 12)	45,707,730.	36,397,454.
Expenses	13 Grants and similar amounts paid (Part IX, column (A), lines 1-3)	3,907,356.	4,209,090.
	14 Benefits paid to or for members (Part IX, column (B), line 4)	0.	0.
	15 Salaries, other compensation, employee benefits (Part IX, column (A), lines 5-10)	4,654,508.	6,372,814.
	16a Professional fundraising fees (Part IX, column (D), line 11e)	0.	0.
	b Total fundraising expenses (Part IX, column (D), line 25)	3,855,869.	
	17 Other expenses (Part IX, column (A), lines 11a-11d, 11f-24e)	8,598,558.	12,781,970.
	18 Total expenses. Add lines 13-17 (must equal Part IX, column (A), line 25)	17,160,422.	23,363,874.
	19 Revenue less expenses. Subtract line 18 from line 12	28,547,308.	13,033,580.
Net Assets or Fund Balances	20 Total assets (Part X, line 16)	Beginning of Current Year: 31,688,292.	End of Year: 63,471,958.
	21 Total liabilities (Part X, line 26)	1,611,496.	20,361,582.
	22 Net assets or fund balances. Subtract line 21 from line 20	30,076,796.	43,110,376.

Part II Signature Block

Under penalties of perjury, I declare that I have examined this return, including accompanying schedules and statements, and to the best of my knowledge and belief, it is true, correct, and complete. Declaration of preparer (other than officer) is based on all information of which preparer has any knowledge.

Sign Here: *Edward Corrigan* Signature of officer Date: **11/15/23**
Edward Corrigan, President and CEO
 Type or print name and title

Paid Preparer: Print/Type preparer's name: **Yong Zhang, CPA** Preparer's signature: *Yong Zhang* Date: **11/14/23** Check self-employed PTIN: **P01249785**
 Firm's name: **Rogers & Company PLLC** Firm's EIN: **58-2676261**
 Firm's address: **8300 Boone Boulevard, Suite 600 Vienna, VA 22182** Phone no. (703) **898-0300**

May the IRS discuss this return with the preparer shown above? See instructions Yes No

232001 12-13-22 LHA For Paperwork Reduction Act Notice, see the separate instructions. Form 990 (2022)

Part III Statement of Program Service Accomplishments

Check if Schedule O contains a response or note to any line in this Part III X

1 Briefly describe the organization's mission: See Schedule O

2 Did the organization undertake any significant program services during the year which were not listed on the prior Form 990 or 990-EZ? Yes X No

3 Did the organization cease conducting, or make significant changes in how it conducts, any program services? Yes X No

4 Describe the organization's program service accomplishments for each of its three largest program services, as measured by expenses. Section 501(c)(3) and 501(c)(4) organizations are required to report the amount of grants and allocations to others, the total expenses, and revenue, if any, for each program service reported.

4a (Code:) (Expenses \$ 16,322,807. including grants of \$ 4,209,090.) (Revenue \$ 859,526.)

See Schedule O

4b (Code:) (Expenses \$ including grants of \$) (Revenue \$)

4c (Code:) (Expenses \$ including grants of \$) (Revenue \$)

4d Other program services (Describe on Schedule O.)

(Expenses \$ including grants of \$) (Revenue \$)

4e Total program service expenses 16,322,807.

Part IV Checklist of Required Schedules

	Yes	No
1 Is the organization described in section 501(c)(3) or 4947(a)(1) (other than a private foundation)? <i>If "Yes," complete Schedule A</i>	X	
2 Is the organization required to complete Schedule B, Schedule of Contributors? See instructions	X	
3 Did the organization engage in direct or indirect political campaign activities on behalf of or in opposition to candidates for public office? <i>If "Yes," complete Schedule C, Part I</i>		X
4 Section 501(c)(3) organizations. Did the organization engage in lobbying activities, or have a section 501(h) election in effect during the tax year? <i>If "Yes," complete Schedule C, Part II</i>		X
5 Is the organization a section 501(c)(4), 501(c)(5), or 501(c)(6) organization that receives membership dues, assessments, or similar amounts as defined in Rev. Proc. 98-19? <i>If "Yes," complete Schedule C, Part III</i>		X
6 Did the organization maintain any donor advised funds or any similar funds or accounts for which donors have the right to provide advice on the distribution or investment of amounts in such funds or accounts? <i>If "Yes," complete Schedule D, Part I</i>		X
7 Did the organization receive or hold a conservation easement, including easements to preserve open space, the environment, historic land areas, or historic structures? <i>If "Yes," complete Schedule D, Part II</i>		X
8 Did the organization maintain collections of works of art, historical treasures, or other similar assets? <i>If "Yes," complete Schedule D, Part III</i>		X
9 Did the organization report an amount in Part X, line 21, for escrow or custodial account liability, serve as a custodian for amounts not listed in Part X; or provide credit counseling, debt management, credit repair, or debt negotiation services? <i>If "Yes," complete Schedule D, Part IV</i>		X
10 Did the organization, directly or through a related organization, hold assets in donor-restricted endowments or in quasi endowments? <i>If "Yes," complete Schedule D, Part V</i>		X
11 If the organization's answer to any of the following questions is "Yes," then complete Schedule D, Parts VI, VII, VIII, IX, or X, as applicable.		
a Did the organization report an amount for land, buildings, and equipment in Part X, line 10? <i>If "Yes," complete Schedule D, Part VI</i>	X	
b Did the organization report an amount for investments - other securities in Part X, line 12, that is 5% or more of its total assets reported in Part X, line 16? <i>If "Yes," complete Schedule D, Part VII</i>		X
c Did the organization report an amount for investments - program related in Part X, line 13, that is 5% or more of its total assets reported in Part X, line 16? <i>If "Yes," complete Schedule D, Part VIII</i>		X
d Did the organization report an amount for other assets in Part X, line 15, that is 5% or more of its total assets reported in Part X, line 16? <i>If "Yes," complete Schedule D, Part IX</i>	X	
e Did the organization report an amount for other liabilities in Part X, line 25? <i>If "Yes," complete Schedule D, Part X</i>	X	
f Did the organization's separate or consolidated financial statements for the tax year include a footnote that addresses the organization's liability for uncertain tax positions under FIN 48 (ASC 740)? <i>If "Yes," complete Schedule D, Part X</i>	X	
12a Did the organization obtain separate, independent audited financial statements for the tax year? <i>If "Yes," complete Schedule D, Parts XI and XII</i>	X	
b Was the organization included in consolidated, independent audited financial statements for the tax year? <i>If "Yes," and if the organization answered "No" to line 12a, then completing Schedule D, Parts XI and XII is optional</i>		X
13 Is the organization a school described in section 170(b)(1)(A)(ii)? <i>If "Yes," complete Schedule E</i>		X
14a Did the organization maintain an office, employees, or agents outside of the United States?		X
b Did the organization have aggregate revenues or expenses of more than \$10,000 from grantmaking, fundraising, business, investment, and program service activities outside the United States, or aggregate foreign investments valued at \$100,000 or more? <i>If "Yes," complete Schedule F, Parts I and IV</i>		X
15 Did the organization report on Part IX, column (A), line 3, more than \$5,000 of grants or other assistance to or for any foreign organization? <i>If "Yes," complete Schedule F, Parts II and IV</i>		X
16 Did the organization report on Part IX, column (A), line 3, more than \$5,000 of aggregate grants or other assistance to or for foreign individuals? <i>If "Yes," complete Schedule F, Parts III and IV</i>		X
17 Did the organization report a total of more than \$15,000 of expenses for professional fundraising services on Part IX, column (A), lines 6 and 11e? <i>If "Yes," complete Schedule G, Part I. See instructions</i>		X
18 Did the organization report more than \$15,000 total of fundraising event gross income and contributions on Part VIII, lines 1c and 8a? <i>If "Yes," complete Schedule G, Part II</i>		X
19 Did the organization report more than \$15,000 of gross income from gaming activities on Part VIII, line 9a? <i>If "Yes," complete Schedule G, Part III</i>		X
20a Did the organization operate one or more hospital facilities? <i>If "Yes," complete Schedule H</i>		X
b If "Yes" to line 20a, did the organization attach a copy of its audited financial statements to this return?		
21 Did the organization report more than \$5,000 of grants or other assistance to any domestic organization or domestic government on Part IX, column (A), line 1? <i>If "Yes," complete Schedule I, Parts I and II</i>	X	

Part IV Checklist of Required Schedules (continued)

	Yes	No
22 Did the organization report more than \$5,000 of grants or other assistance to or for domestic individuals on Part IX, column (A), line 2? If "Yes," complete Schedule I, Parts I and III		X
23 Did the organization answer "Yes" to Part VII, Section A, line 3, 4, or 5, about compensation of the organization's current and former officers, directors, trustees, key employees, and highest compensated employees? If "Yes," complete Schedule J	X	
24a Did the organization have a tax-exempt bond issue with an outstanding principal amount of more than \$100,000 as of the last day of the year, that was issued after December 31, 2002? If "Yes," answer lines 24b through 24d and complete Schedule K. If "No," go to line 25a		X
b Did the organization invest any proceeds of tax-exempt bonds beyond a temporary period exception?		
c Did the organization maintain an escrow account other than a refunding escrow at any time during the year to defease any tax-exempt bonds?		
d Did the organization act as an "on behalf of" issuer for bonds outstanding at any time during the year?		
25a Section 501(c)(3), 501(c)(4), and 501(c)(29) organizations. Did the organization engage in an excess benefit transaction with a disqualified person during the year? If "Yes," complete Schedule L, Part I		X
b Is the organization aware that it engaged in an excess benefit transaction with a disqualified person in a prior year, and that the transaction has not been reported on any of the organization's prior Forms 990 or 990-EZ? If "Yes," complete Schedule L, Part I		X
26 Did the organization report any amount on Part X, line 5 or 22, for receivables from or payables to any current or former officer, director, trustee, key employee, creator or founder, substantial contributor, or 35% controlled entity or family member of any of these persons? If "Yes," complete Schedule L, Part III		X
27 Did the organization provide a grant or other assistance to any current or former officer, director, trustee, key employee, creator or founder, substantial contributor or employee thereof, a grant selection committee member, or to a 35% controlled entity (including an employee thereof) or family member of any of these persons? If "Yes," complete Schedule L, Part III		X
28 Was the organization a party to a business transaction with one of the following parties (see the Schedule L, Part IV, instructions for applicable filing thresholds, conditions, and exceptions):		
a A current or former officer, director, trustee, key employee, creator or founder or substantial contributor? If "Yes," complete Schedule L, Part IV		X
b A family member of any individual described in line 28a? If "Yes," complete Schedule L, Part IV		X
c A 35% controlled entity of one or more individuals and/or organizations described in line 28a or 28b? If "Yes," complete Schedule L, Part IV		X
29 Did the organization receive more than \$25,000 in non-cash contributions? If "Yes," complete Schedule M	X	
30 Did the organization receive contributions of art, historical treasures, or other similar assets, or qualified conservation contributions? If "Yes," complete Schedule M		X
31 Did the organization liquidate, terminate, or dissolve and cease operations? If "Yes," complete Schedule N, Part I		X
32 Did the organization sell, exchange, dispose of, or transfer more than 25% of its net assets? If "Yes," complete Schedule N, Part II		X
33 Did the organization own 100% of an entity disregarded as separate from the organization under Regulations sections 301.7701-2 and 301.7701-3? If "Yes," complete Schedule R, Part I	X	
34 Was the organization related to any tax-exempt or taxable entity? If "Yes," complete Schedule R, Part II, III, or IV, and Part V, line 1	X	
35a Did the organization have a controlled entity within the meaning of section 512(b)(13)?	X	
b If "Yes" to line 35a, did the organization receive any payment from or engage in any transaction with a controlled entity within the meaning of section 512(b)(13)? If "Yes," complete Schedule R, Part V, line 2	X	
36 Section 501(c)(3) organizations. Did the organization make any transfers to an exempt non-charitable related organization? If "Yes," complete Schedule R, Part V, line 2		X
37 Did the organization conduct more than 5% of its activities through an entity that is not a related organization and that is treated as a partnership for federal income tax purposes? If "Yes," complete Schedule R, Part VI		X
38 Did the organization complete Schedule O and provide explanations on Schedule O for Part VI, lines 11b and 19? Note: All Form 990 filers are required to complete Schedule O	X	

Part V Statements Regarding Other IRS Filings and Tax Compliance

Check if Schedule O contains a response or note to any line in this Part V

	Yes	No
1a Enter the number reported in box 3 of Form 1099. Enter -0- if not applicable		
b Enter the number of Forms W-2G included on line 1a. Enter -0- if not applicable		
c Did the organization comply with backup withholding rules for reportable payments to vendors and reportable gaming (gambling) winnings to prize winners?	X	

Part V Statements Regarding Other IRS Filings and Tax Compliance (continued)

		Yes	No
2a	Enter the number of employees reported on Form W-3, Transmittal of Wage and Tax Statements, filed for the calendar year ending with or within the year covered by this return		
	2a		31
b	If at least one is reported on line 2a, did the organization file all required federal employment tax returns?	X	
3a	Did the organization have unrelated business gross income of \$1,000 or more during the year?	X	
b	If "Yes," has it filed a Form 990-T for this year? If "No" to line 3b, provide an explanation on Schedule O	X	
4a	At any time during the calendar year, did the organization have an interest in, or a signature or other authority over, a financial account in a foreign country (such as a bank account, securities account, or other financial account)?		X
b	If "Yes," enter the name of the foreign country		
	See instructions for filing requirements for FinCEN Form 114, Report of Foreign Bank and Financial Accounts (FBAR).		
5a	Was the organization a party to a prohibited tax shelter transaction at any time during the tax year?		X
b	Did any taxable party notify the organization that it was or is a party to a prohibited tax shelter transaction?		X
c	If "Yes" to line 5a or 5b, did the organization file Form 8886-T?		
6a	Does the organization have annual gross receipts that are normally greater than \$100,000, and did the organization solicit any contributions that were not tax deductible as charitable contributions?		X
b	If "Yes," did the organization include with every solicitation an express statement that such contributions or gifts were not tax deductible?		
7	Organizations that may receive deductible contributions under section 170(c).		
a	Did the organization receive a payment in excess of \$75 made partly as a contribution and partly for goods and services provided to the payor?		X
b	If "Yes," did the organization notify the donor of the value of the goods or services provided?		
c	Did the organization sell, exchange, or otherwise dispose of tangible personal property for which it was required to file Form 8282?		X
d	If "Yes," indicate the number of Forms 8282 filed during the year		
	7d		
e	Did the organization receive any funds, directly or indirectly, to pay premiums on a personal benefit contract?		X
f	Did the organization, during the year, pay premiums, directly or indirectly, on a personal benefit contract?		X
g	If the organization received a contribution of qualified intellectual property, did the organization file Form 8899 as required?		
h	If the organization received a contribution of cars, boats, airplanes, or other vehicles, did the organization file a Form 1098-C?		
8	Sponsoring organizations maintaining donor advised funds. Did a donor advised fund maintained by the sponsoring organization have excess business holdings at any time during the year?		
9	Sponsoring organizations maintaining donor advised funds.		
a	Did the sponsoring organization make any taxable distributions under section 4966?		
b	Did the sponsoring organization make a distribution to a donor, donor advisor, or related person?		
10	Section 501(c)(7) organizations. Enter:		
a	Initiation fees and capital contributions included on Part VIII, line 12	10a	
b	Gross receipts, included on Form 990, Part VIII, line 12, for public use of club facilities	10b	
11	Section 501(c)(12) organizations. Enter:		
a	Gross income from members or shareholders	11a	
b	Gross income from other sources. (Do not net amounts due or paid to other sources against amounts due or received from them.)	11b	
12a	Section 4947(a)(1) non-exempt charitable trusts. Is the organization filing Form 990 in lieu of Form 1041?		
b	If "Yes," enter the amount of tax-exempt interest received or accrued during the year	12b	
13	Section 501(c)(27) qualified nonprofit health insurance issuers.		
a	Is the organization licensed to issue qualified health plans in more than one state?	13a	
	Note: See the instructions for additional information the organization must report on Schedule O.		
b	Enter the amount of reserves the organization is required to maintain by the states in which the organization is licensed to issue qualified health plans	13b	
c	Enter the amount of reserves on hand	13c	
14a	Did the organization receive any payments for indoor tanning services during the tax year?	14a	X
b	If "Yes," has it filed a Form 720 to report these payments? If "No," provide an explanation on Schedule O	14b	
15	Is the organization subject to the section 4960 tax on payment(s) of more than \$1,000,000 in remuneration or excess parachute payment(s) during the year?	15	X
	If "Yes," see the instructions and file Form 4720, Schedule N.		
16	Is the organization an educational institution subject to the section 4968 excise tax on net investment income?	16	X
	If "Yes," complete Form 4720, Schedule O.		
17	Section 501(c)(21) organizations. Did the trust, or any disqualified or other person engage in any activities that would result in the imposition of an excise tax under section 4951, 4952 or 4953?	17	
	If "Yes," complete Form 6069.		

Part VI Governance, Management, and Disclosure. For each "Yes" response to lines 2 through 7b below, and for a "No" response to line 8a, 8b, or 10b below, describe the circumstances, processes, or changes on Schedule O. See instructions.

Check if Schedule O contains a response or note to any line in this Part VI

X

Section A. Governing Body and Management

Table with 3 columns: Question, Yes, No. Rows include: 1a Enter the number of voting members... 1b Enter the number of voting members included... 2 Did any officer, director, trustee, or key employee have a family relationship... 3 Did the organization delegate control over management duties... 4 Did the organization make any significant changes to its governing documents... 5 Did the organization become aware during the year of a significant diversion of the organization's assets... 6 Did the organization have members or stockholders... 7a Did the organization have members, stockholders, or other persons who had the power to elect or appoint one or more members of the governing body... 7b Are any governance decisions of the organization reserved to (or subject to approval by) members, stockholders, or persons other than the governing body... 8 Did the organization contemporaneously document the meetings held or written actions undertaken during the year by the following: a The governing body? b Each committee with authority to act on behalf of the governing body? 9 Is there any officer, director, trustee, or key employee listed in Part VII, Section A, who cannot be reached at the organization's mailing address? If "Yes," provide the names and addresses on Schedule O.

Section B. Policies (This Section B requests information about policies not required by the Internal Revenue Code.)

Table with 3 columns: Question, Yes, No. Rows include: 10a Did the organization have local chapters, branches, or affiliates? 10b If "Yes," did the organization have written policies and procedures governing the activities of such chapters, affiliates, and branches to ensure their operations are consistent with the organization's exempt purposes? 11a Has the organization provided a complete copy of this Form 990 to all members of its governing body before filing the form? 11b Describe on Schedule O the process, if any, used by the organization to review this Form 990. 12a Did the organization have a written conflict of interest policy? If "No," go to line 13 12b Were officers, directors, or trustees, and key employees required to disclose annually interests that could give rise to conflicts? 12c Did the organization regularly and consistently monitor and enforce compliance with the policy? If "Yes," describe on Schedule O how this was done 13 Did the organization have a written whistleblower policy? 14 Did the organization have a written document retention and destruction policy? 15 Did the process for determining compensation of the following persons include a review and approval by independent persons, comparability data, and contemporaneous substantiation of the deliberation and decision? a The organization's CEO, Executive Director, or top management official b Other officers or key employees of the organization If "Yes" to line 15a or 15b, describe the process on Schedule O. See instructions. 16a Did the organization invest in, contribute assets to, or participate in a joint venture or similar arrangement with a taxable entity during the year? 16b If "Yes," did the organization follow a written policy or procedure requiring the organization to evaluate its participation in joint venture arrangements under applicable federal tax law, and take steps to safeguard the organization's exempt status with respect to such arrangements?

Section C. Disclosure

- 17 List the states with which a copy of this Form 990 is required to be filed AL, AR, CA, FL, GA, HI, IL, KS, KY, MD, MA, MI
18 Section 6104 requires an organization to make its Forms 1023 (1024 or 1024-A, if applicable), 990, and 990-T (section 501(c)(3)s only) available for public inspection. Indicate how you made these available. Check all that apply. Own website Another's website X Upon request Other (explain on Schedule O)
19 Describe on Schedule O whether (and if so, how) the organization made its governing documents, conflict of interest policy, and financial statements available to the public during the tax year.
20 State the name, address, and telephone number of the person who possesses the organization's books and records
Wesley Denton - (202) 742-8988
300 Independence Avenue SE, Washington, DC 20003

See Schedule O for full list of states

Part VII Compensation of Officers, Directors, Trustees, Key Employees, Highest Compensated Employees, and Independent Contractors

Check if Schedule O contains a response or note to any line in this Part VII

Section A. Officers, Directors, Trustees, Key Employees, and Highest Compensated Employees

1a Complete this table for all persons required to be listed. Report compensation for the calendar year ending with or within the organization's tax year.

• List all of the organization's **current** officers, directors, trustees (whether individuals or organizations), regardless of amount of compensation. Enter -0- in columns (D), (E), and (F) if no compensation was paid.

• List all of the organization's **current** key employees, if any. See the instructions for definition of "key employee."

• List the organization's **five current** highest compensated employees (other than an officer, director, trustee, or key employee) who received reportable compensation (box 5 of Form W-2, box 6 of Form 1099-MISC, and/or box 1 of Form 1099-NEC) of more than \$100,000 from the organization and any related organizations.

• List all of the organization's **former** officers, key employees, and highest compensated employees who received more than \$100,000 of reportable compensation from the organization and any related organizations.

• List all of the organization's **former** directors or trustees that received, in the capacity as a former director or trustee of the organization, more than \$10,000 of reportable compensation from the organization and any related organizations.

See the instructions for the order in which to list the persons above.

Check this box if neither the organization nor any related organization compensated any current officer, director, or trustee.

(A) Name and title	(B) Average hours per week (list any hours for related organizations below line)	(C) Position (do not check more than one box, unless person is both an officer and a director/trustee)						(D) Reportable compensation from the organization (W-2/1099-MISC/1099-NEC)	(E) Reportable compensation from related organizations (W-2/1099-MISC/1099-NEC)	(F) Estimated amount of other compensation from the organization and related organizations
		Individual trustee or director	Institutional trustee	Officer	Key employee	Highest compensated employee	Former			
(1) Mark Meadows Senior Partner	40.00					X	846,887.	0.	42,800.	
(2) James W. DeMint Chairman	40.00	X		X			652,476.	0.	16,076.	
(3) Edward Corrigan President & CEO	40.00	X		X			378,441.	0.	17,231.	
(4) Wesley Denton COO	40.00	X		X			345,177.	0.	46,558.	
(5) Doug Stamps Counselor to the Chairman	40.00					X	329,514.	0.	46,798.	
(6) Rachel Bovard Stanley Senior Director of Policy	40.00					X	269,885.	0.	32,485.	
(7) Cleta Mitchell Senior Legal Fellow & Secretary	40.00			X			300,000.	0.	0.	
(8) Jeffrey Trimbath Sr. Advisor & Dir., Legacy Society	40.00					X	205,816.	0.	47,446.	
(9) Matthew Hoskins Development & Operations Advisor	30.00					X	230,768.	0.	11,748.	
(10) Cameron Seward General Counsel/Secretary (starting	40.00			X			203,497.	0.	37,168.	
(11) Bret Bernhardt Treasurer	2.00	X		X			0.	0.	0.	
(12) Charlotte Davis Director	2.00	X					0.	0.	0.	
(13) Tom Jones Director	2.00	X					0.	0.	0.	
(14) Gaston Mooney Director	2.00	X					0.	0.	0.	

Part VII Section A. Officers, Directors, Trustees, Key Employees, and Highest Compensated Employees (continued)

(A) Name and title	(B) Average hours per week (list any hours for related organizations below line)	(C) Position (do not check more than one box, unless person is both an officer and a director/trustee)						(D) Reportable compensation from the organization (W-2/1099-MISC/1099-NEC)	(E) Reportable compensation from related organizations (W-2/1099-MISC/1099-NEC)	(F) Estimated amount of other compensation from the organization and related organizations
		Individual trustee or director	Institutional trustee	Officer	Key employee	Highest compensated employee	Former			
1b Subtotal							3,762,461.	0.	298,310.	
c Total from continuation sheets to Part VII, Section A							0.	0.	0.	
d Total (add lines 1b and 1c)							3,762,461.	0.	298,310.	

2 Total number of individuals (including but not limited to those listed above) who received more than \$100,000 of reportable compensation from the organization 15

	Yes	No
3 Did the organization list any former officer, director, trustee, key employee, or highest compensated employee on line 1a? If "Yes," complete Schedule J for such individual	3	X
4 For any individual listed on line 1a, is the sum of reportable compensation and other compensation from the organization and related organizations greater than \$100,000? If "Yes," complete Schedule J for such individual	4	X
5 Did any person listed on line 1a receive or accrue compensation from any unrelated organization or individual for services rendered to the organization? If "Yes," complete Schedule J for such person	5	X

Section B. Independent Contractors

1 Complete this table for your five highest compensated independent contractors that received more than \$100,000 of compensation from the organization. Report compensation for the calendar year ending with or within the organization's tax year.

(A) Name and business address	(B) Description of services	(C) Compensation
Compass Legal Services, 300 Independence Ave, SE, Washington, DC 20003	Legal Services	1,089,729.
Compass Professional Inc, 300 Independence Ave, SE, Washington, DC 20003	Administrative Services	949,443.
Compass Property Management, 300 Independence Ave, SE, Washington, DC 20003	Administrative Services	550,000.
Envision Marketing 148 Graves Road, Lynchburg, VA 24502	Marketing Services	492,373.
CORE Architecture, 1010 Wisconsin Ave NW, Suite 405, Washington, DC 20007	Architectural Services	471,154.
2 Total number of independent contractors (including but not limited to those listed above) who received more than \$100,000 of compensation from the organization		13

Part VIII Statement of Revenue

Check if Schedule O contains a response or note to any line in this Part VIII

		(A)	(B)	(C)	(D)	
		Total revenue	Related or exempt function revenue	Unrelated business revenue	Revenue excluded from tax under sections 512 - 514	
Contributions, Gifts, Grants and Other Similar Amounts	1 a Federated campaigns	1a				
	b Membership dues	1b				
	c Fundraising events	1c				
	d Related organizations	1d				
	e Government grants (contributions)	1e				
	f All other contributions, gifts, grants, and similar amounts not included above	1f	35,715,410.			
	g Noncash contributions included in lines 1a-1f	1g	\$ 470,376.			
	h Total. Add lines 1a-1f		35,715,410.			
Program Service Revenue	2 a Workspace Share Revenue	Business Code 900099	716,433.	716,433		
	b Memberships	900099	118,000.	118,000		
	c Registrations	900099	25,093.	25,093.		
	d					
	e					
	f All other program service revenue					
	g Total. Add lines 2a-2f		859,526.			
Other Revenue	3 Investment income (including dividends, interest, and other similar amounts)		76.		976.	
	4 Income from investment of tax-exempt bond proceeds					
	5 Royalties					
	6 a Gross rents	(i) Real	6a	147,662.		
		(ii) Personal	6b	348,458.		
			6c	-200,796.		
	d Net rental income or (loss)		-200,796.		-200,796.	
	7 a Gross amount from sales of assets other than inventory	(i) Securities	7a			
		(ii) Other	7b			
			7c			
	d Net gain or (loss)					
	8 a Gross income from fundraising events (not including \$ of contributions reported on line 1g). See Part IV, line 18	8a				
	b Less: direct expenses	8b				
	c Net income or (loss) from fundraising events					
9 a Gross income from gaming activities. See Part IV, line 19	9a					
b Less: direct expenses	9b					
c Net income or (loss) from gaming activities						
10 a Gross sales of inventory, less returns and allowances	10a					
b Less: cost of goods sold	10b					
c Net income or (loss) from sales of inventory						
Miscellaneous Revenue	11 a Discounts	Business Code 900099	20,831.		20,831.	
	b Miscellaneous	900099	1,507.		1,507.	
	c					
	d All other revenue					
	e Total. Add lines 11a-11d		22,338.			
12 Total revenue. See instructions		36,397,454.	859,526.	-200,796.	23,314.	

Part IX Statement of Functional Expenses

Section 501(c)(3) and 501(c)(4) organizations must complete all columns. All other organizations must complete column (A).

Check if Schedule O contains a response or note to any line in this Part IX

Do not include amounts reported on lines 6b, 7b, 8b, 9b, and 10b of Part VIII.	(A) Total expenses	(B) Program service expenses	(C) Management and general expenses	(D) Fundraising expenses
1 Grants and other assistance to domestic organizations and domestic governments. See Part IV, line 21	4,209,090.	4,209,090.		
2 Grants and other assistance to domestic individuals. See Part IV, line 22				
3 Grants and other assistance to foreign organizations, foreign governments, and foreign individuals. See Part IV, lines 15 and 16				
4 Benefits paid to or for members				
5 Compensation of current officers, directors, trustees, and key employees	1,996,625.	1,317,974.	254,494.	424,157.
6 Compensation not included above to disqualified persons (as defined under section 4958(f)(1)) and persons described in section 4958(c)(3)(B)				
7 Other salaries and wages	3,697,358.	1,971,077.	258,841.	1,470,440.
8 Pension plan accruals and contributions (include section 401(k) and 403(b) employer contributions)	141,546.	69,669.	7,626.	64,251.
9 Other employee benefits	255,552.	138,985.	24,167.	92,400.
10 Payroll taxes	281,733.	169,949.	23,973.	96,811.
11 Fees for services (nonemployees):				
a Management	1,214,197.	862,569.	442,854.	118,774.
b Legal	1,462,950.	1,099,567.	272,537.	90,846.
c Accounting	409,289.	20,600.	388,689.	
d Lobbying				
e Professional fundraising services. See Part IV, line 17				
f Investment management fees				
g Other. (If line 11g amount exceeds 10% of line 25, column (A), amount, list line 11g expenses on Sch O.)	1,336,617.	1,024,014.	76,997.	235,606.
12 Advertising and promotion	982,786.	262,188.	31,895.	688,703.
13 Office expenses	1,076,743.	335,148.	326,911.	414,684.
14 Information technology	779,253.	398,893.	317,006.	63,354.
15 Royalties				
16 Occupancy	2,609,013.	2,275,402.	333,567.	44.
17 Travel	506,352.	252,009.	174,071.	80,272.
18 Payments of travel or entertainment expenses for any federal, state, or local public officials				
19 Conferences, conventions, and meetings	1,654,217.	1,409,024.	232,834.	12,359.
20 Interest	202,849.	202,849.		
21 Payments to affiliates				
22 Depreciation, depletion, and amortization	296,333.	296,333.		
23 Insurance	241,023.	222,611.	18,412.	
24 Other expenses. Itemize expenses not covered above. (List miscellaneous expenses on line 24e. If line 24e amount exceeds 10% of line 25, column (A), amount, list line 24e expenses on Schedule O.)				
a Other expenses	10,348.	3,856.	3,324.	3,168.
b				
c				
d				
e All other expenses				
25 Total functional expenses. Add lines 1 through 24e	23,363,874.	16,322,807.	3,185,198.	3,855,869.
26 Joint costs. Complete this line only if the organization reported in column (B) joint costs from a combined educational campaign and fundraising solicitation. Check here <input type="checkbox"/> if following SOP 98-2 (ASC 958-720)				

Part X Balance Sheet

Check if Schedule O contains a response or note to any line in this Part X

		(A) Beginning of year		(B) End of year	
Assets	1 Cash - non-interest-bearing	16,864,393.	1	12,474,649.	
	2 Savings and temporary cash investments	312,771.	2	27,034.	
	3 Pledges and grants receivable, net		3	10,840,764.	
	4 Accounts receivable, net	64,000.	4	36,817.	
	5 Loans and other receivables from any current or former officer, director, trustee, key employee, creator or founder, substantial contributor, or 35% controlled entity or family member of any of these persons		5		
	6 Loans and other receivables from other disqualified persons (as defined under section 4958(f)(1)), and persons described in section 4958(c)(3)(B)		6		
	7 Notes and loans receivable, net		7		
	8 Inventories for sale or use		8		
	9 Prepaid expenses and deferred charges	263,733.	9	423,374.	
	10a Land, buildings, and equipment: cost or other basis. Complete Part VI of Schedule D	10a 34,312,468.			
	b Less: accumulated depreciation	10b 500,724.	13,277,905.	10c	33,811,744.
	11 Investments - publicly traded securities		11		
	12 Investments - other securities. See Part IV, line 11		12		
	13 Investments - program-related. See Part IV, line 11		13		
	14 Intangible assets		14	172,907.	
	15 Other assets. See Part IV, line 11	905,490.	15	5,684,669.	
16 Total assets. Add lines 1 through 15 (must equal line 33)	31,688,292.	16	63,471,958.		
Liabilities	17 Accounts payable and accrued expenses	516,333.	17	1,145,016.	
	18 Grants payable		18		
	19 Deferred revenue		19	12,500.	
	20 Tax-exempt bond liabilities		20		
	21 Escrow or custodial account liability. Complete Part IV of Schedule D		21		
	22 Loans and other payables to any current or former officer, director, trustee, key employee, creator or founder, substantial contributor, or 35% controlled entity or family member of any of these persons		22		
	23 Secured mortgages and notes payable to unrelated third parties	1,069,663.	23	15,980,226.	
	24 Unsecured notes and loans payable to unrelated third parties		24		
	25 Other liabilities (including federal income tax, payables to related third parties, and other liabilities not included on lines 17-24). Complete Part X of Schedule D	25,500.	25	3,223,840.	
	26 Total liabilities. Add lines 17 through 25	1,611,496.	26	20,361,582.	
Net Assets or Fund Balances	Organizations that follow FASB ASC 958, check here <input checked="" type="checkbox"/> and complete lines 27, 28, 32, and 33.				
	27 Net assets without donor restrictions	30,076,796.	27	43,110,376.	
	28 Net assets with donor restrictions		28		
	Organizations that do not follow FASB ASC 958, check here <input type="checkbox"/> and complete lines 29 through 33.				
	29 Capital stock or trust principal, or current funds		29		
	30 Paid-in or capital surplus, or land, building, or equipment fund		30		
	31 Retained earnings, endowment, accumulated income, or other funds		31		
32 Total net assets or fund balances	30,076,796.	32	43,110,376.		
33 Total liabilities and net assets/fund balances	31,688,292.	33	63,471,958.		

Part XI Reconciliation of Net Assets

Check if Schedule O contains a response or note to any line in this Part XI

1	Total revenue (must equal Part VIII, column (A), line 12)	1	36,397,454.
2	Total expenses (must equal Part IX, column (A), line 25)	2	23,363,874.
3	Revenue less expenses. Subtract line 2 from line 1	3	13,033,580.
4	Net assets or fund balances at beginning of year (must equal Part X, line 32, column (A))	4	30,076,796.
5	Net unrealized gains (losses) on investments	5	
6	Donated services and use of facilities	6	
7	Investment expenses	7	
8	Prior period adjustments	8	
9	Other changes in net assets or fund balances (explain on Schedule O)	9	0.
10	Net assets or fund balances at end of year. Combine lines 3 through 9 (must equal Part X, line 32, column (B))	10	43,110,376.

Part XII Financial Statements and Reporting

Check if Schedule O contains a response or note to any line in this Part XII

	Yes	No
1 Accounting method used to prepare the Form 990: <input type="checkbox"/> Cash <input checked="" type="checkbox"/> Accrual <input type="checkbox"/> Other If the organization changed its method of accounting from a prior year or checked "Other," explain on Schedule O.		
2a Were the organization's financial statements compiled or reviewed by an independent accountant? If "Yes," check a box below to indicate whether the financial statements for the year were compiled or reviewed on a separate basis, consolidated basis, or both: <input type="checkbox"/> Separate basis <input type="checkbox"/> Consolidated basis <input type="checkbox"/> Both consolidated and separate basis	2a	X
b Were the organization's financial statements audited by an independent accountant? If "Yes," check a box below to indicate whether the financial statements for the year were audited on a separate basis, consolidated basis, or both: <input checked="" type="checkbox"/> Separate basis <input type="checkbox"/> Consolidated basis <input type="checkbox"/> Both consolidated and separate basis	2b	X
c If "Yes" to line 2a or 2b, does the organization have a committee that assumes responsibility for oversight of the audit, review, or compilation of its financial statements and selection of an independent accountant? If the organization changed either its oversight process or selection process during the tax year, explain on Schedule O.	2c	X
3a As a result of a federal award, was the organization required to undergo an audit or audits as set forth in the Uniform Guidance, 2 C.F.R. Part 200, Subpart F?	3a	X
b If "Yes," did the organization undergo the required audit or audits? If the organization did not undergo the required audit or audits, explain why on Schedule O and describe any steps taken to undergo such audits	3b	

SCHEDULE A
(Form 990)

Department of the Treasury
Internal Revenue Service

Public Charity Status and Public Support
Complete if the organization is a section 501(c)(3) organization or a section 4947(a)(1) nonexempt charitable trust.
Attach to Form 990 or Form 990-EZ.
Go to www.irs.gov/Form990 for instructions and the latest information.

OMB No. 1545-0047

2022

Open to Public Inspection

Name of the organization

Conservative Partnership Institute

Employer identification number
82-1470217

Part I Reason for Public Charity Status. (All organizations must complete this part.) See instructions.

- The organization is not a private foundation because it is: (For lines 1 through 12, check only one box.)
- 1 A church, convention of churches, or association of churches described in **section 170(b)(1)(A)(i).**
 - 2 A school described in **section 170(b)(1)(A)(ii).** (Attach Schedule E (Form 990).)
 - 3 A hospital or a cooperative hospital service organization described in **section 170(b)(1)(A)(iii).**
 - 4 A medical research organization operated in conjunction with a hospital described in **section 170(b)(1)(A)(iii).** Enter the hospital's name, city, and state: _____
 - 5 An organization operated for the benefit of a college or university owned or operated by a governmental unit described in **section 170(b)(1)(A)(iv).** (Complete Part II.)
 - 6 A federal, state, or local government or governmental unit described in **section 170(b)(1)(A)(v).**
 - 7 An organization that normally receives a substantial part of its support from a governmental unit or from the general public described in **section 170(b)(1)(A)(vi).** (Complete Part II.)
 - 8 A community trust described in **section 170(b)(1)(A)(vi).** (Complete Part II.)
 - 9 An agricultural research organization described in **section 170(b)(1)(A)(ix)** operated in conjunction with a land-grant college or university or a non-land-grant college of agriculture (see instructions). Enter the name, city, and state of the college or university: _____
 - 10 An organization that normally receives (1) more than 33 1/3% of its support from contributions, membership fees, and gross receipts from activities related to its exempt functions, subject to certain exceptions; and (2) no more than 33 1/3% of its support from gross investment income and unrelated business taxable income (less section 511 tax) from businesses acquired by the organization after June 30, 1975. See **section 509(a)(2).** (Complete Part III.)
 - 11 An organization organized and operated exclusively to test for public safety. See **section 509(a)(4).**
 - 12 An organization organized and operated exclusively for the benefit of, to perform the functions of, or to carry out the purposes of one or more publicly supported organizations described in **section 509(a)(1)** or **section 509(a)(2).** See **section 509(a)(3).** Check the box on lines 12a through 12d that describes the type of supporting organization and complete lines 12e, 12f, and 12g.
 - a **Type I.** A supporting organization operated, supervised, or controlled by its supported organization(s), typically by giving the supported organization(s) the power to regularly appoint or elect a majority of the directors or trustees of the supporting organization. You must complete **Part IV, Sections A and B.**
 - b **Type II.** A supporting organization supervised or controlled in connection with its supported organization(s), by having control or management of the supporting organization vested in the same persons that control or manage the supported organization(s). You must complete **Part IV, Sections A and C.**
 - c **Type III functionally integrated.** A supporting organization operated in connection with, and functionally integrated with, its supported organization(s) (see instructions). You must complete **Part IV, Sections A, D, and E.**
 - d **Type III non-functionally integrated.** A supporting organization operated in connection with its supported organization(s) that is not functionally integrated. The organization generally must satisfy a distribution requirement and an attentiveness requirement (see instructions). You must complete **Part IV, Sections A and D, and Part V.**
 - e Check this box if the organization received a written determination from the IRS that it is a Type I, Type II, Type III functionally integrated, or Type III non-functionally integrated supporting organization.

f Enter the number of supported organizations:

g Provide the following information about the supported organization(s).

(i) Name of supported organization	(ii) EIN	(iii) Type of organization (described on lines 1-10 above (see instructions))	(iv) Is the organization listed in your governing document?		(v) Amount of monetary support (see instructions)	(vi) Amount of other support (see instructions)
			Yes	No		
Total						

Part II Support Schedule for Organizations Described in Sections 170(b)(1)(A)(iv) and 170(b)(1)(A)(vi)

(Complete only if you checked the box on line 5, 7, or 8 of Part I or if the organization failed to qualify under Part III. If the organization fails to qualify under the tests listed below, please complete Part III.)

Section A. Public Support

Calendar year (or fiscal year beginning in)	(a) 2018	(b) 2019	(c) 2020	(d) 2021	(e) 2022	(f) Total
1 Gifts, grants, contributions, and membership fees received. (Do not include any "unusual grants.")	4,204,160.	5,689,725.	7,106,027.	45,027,954.	35,715,410.	97,743,276.
2 Tax revenues levied for the organization's benefit and either paid to or expended on its behalf						
3 The value of services or facilities furnished by a governmental unit to the organization without charge						
4 Total. Add lines 1 through 3	4,204,160.	5,689,725.	7,106,027.	45,027,954.	35,715,410.	97,743,276.
5 The portion of total contributions by each person (other than a governmental unit or publicly supported organization) included on line 1 that exceeds 2% of the amount shown on line 11, column (f)						42,253,752.
6 Public support. Subtract line 5 from line 4						55,489,524.

Section B. Total Support

Calendar year (or fiscal year beginning in)	(a) 2018	(b) 2019	(c) 2020	(d) 2021	(e) 2022	(f) Total
7 Amounts from line 4	4,204,160.	5,689,725.	7,106,027.	45,027,954.	35,715,410.	97,743,276.
8 Gross income from interest, dividends, payments received on securities loans, rents, royalties, and income from similar sources	2,033.	6,122.	2,934.	2,892.	976.	14,957.
9 Net income from unrelated business activities, whether or not the business is regularly carried on						
10 Other income. Do not include gain or loss from the sale of capital assets (Explain in Part VI.)				23,379.	22,338.	45,717.
11 Total support. Add lines 7 through 10						97,803,950.
12 Gross receipts from related activities, etc. (See instructions)					12	2,462,589.
13 First 5 years. If the Form 990 is for the organization's first, second, third, fourth, or fifth tax year as a section 501(c)(3) organization, check this box and stop here <input type="checkbox"/>						

Section C. Computation of Public Support Percentage

14 Public support percentage for 2022 (line 6, column (f), divided by line 11, column (f))	14	56.74	%
15 Public support percentage from 2021 Schedule A, Part II, line 14	15		%
16a 33 1/3% support test - 2022. If the organization did not check the box on line 13, and line 14 is 33 1/3% or more, check this box and stop here. The organization qualifies as a publicly supported organization <input checked="" type="checkbox"/>			
b 33 1/3% support test - 2021. If the organization did not check a box on line 13 or 16a, and line 15 is 33 1/3% or more, check this box and stop here. The organization qualifies as a publicly supported organization <input type="checkbox"/>			
17a 10% -facts-and-circumstances test - 2022. If the organization did not check a box on line 13, 16a, or 16b, and line 14 is 10% or more, and if the organization meets the facts-and-circumstances test, check this box and stop here. Explain in Part VI how the organization meets the facts-and-circumstances test. The organization qualifies as a publicly supported organization <input type="checkbox"/>			
b 10% -facts-and-circumstances test - 2021. If the organization did not check a box on line 13, 16a, 16b, or 17a, and line 15 is 10% or more, and if the organization meets the facts-and-circumstances test, check this box and stop here. Explain in Part VI how the organization meets the facts-and-circumstances test. The organization qualifies as a publicly supported organization <input type="checkbox"/>			
18 Private foundation. If the organization did not check a box on line 13, 16a, 16b, 17a, or 17b, check this box and see instructions <input type="checkbox"/>			

Part III Support Schedule for Organizations Described in Section 509(a)(2)

(Complete only if you checked the box on line 10 of Part I or if the organization failed to qualify under Part II. If the organization fails to qualify under the tests listed below, please complete Part II.)

Section A. Public Support

Calendar year (or fiscal year beginning in)	(a) 2018	(b) 2019	(c) 2020	(d) 2021	(e) 2022	(f) Total
1 Gifts, grants, contributions, and membership fees received. (Do not include any "unusual grants.")						
2 Gross receipts from admissions, merchandise sold or services performed, or facilities furnished in any activity that is related to the organization's tax-exempt purpose						
3 Gross receipts from activities that are not an unrelated trade or business under section 513						
4 Tax revenues levied for the organization's benefit and either paid to or expended on its behalf						
5 The value of services or facilities furnished by a governmental unit to the organization without charge						
6 Total. Add lines 1 through 5						
7a Amounts included on lines 1, 2, and 3 received from disqualified persons						
b Amounts included on lines 2 and 3 received from other than disqualified persons that exceed the greater of \$5,000 or 1% of the amount on line 13 for the year						
c Add lines 7a and 7b						
8 Public support. (Sum of lines 7a through 7c)						

Section B. Total Support

Calendar year (or fiscal year beginning in)	(a) 2018	(b) 2019	(c) 2020	(d) 2021	(e) 2022	(f) Total
9 Amounts from line 6						
10a Gross income from interest, dividends, payments received on securities loans, rents, royalties, and income from similar sources						
b Unrelated business taxable income (less section 511 taxes) from businesses acquired after June 30, 1975						
c Add lines 10a and 10b						
11 Net income from unrelated business activities not included on line 10b, whether or not the business is regularly carried on						
12 Other income. Do not include gain or loss from the sale of capital assets (Explain in Part VI.)						
13 Total support. (Add lines 9, 10c, 11, and 12.)						

14 First 5 years. If the Form 990 is for the organization's first, second, third, fourth, or fifth tax year as a section 501(c)(3) organization, check this box and stop here

Section C. Computation of Public Support Percentage

15 Public support percentage for 2022 (line 8, column (f), divided by line 13, column (f))	15	%
16 Public support percentage from 2021 Schedule A, Part III, line 15	16	%

Section D. Computation of Investment Income Percentage

17 Investment income percentage for 2022 (line 10c, column (f), divided by line 13, column (f))	17	%
18 Investment income percentage from 2021 Schedule A, Part III, line 17	18	%

19a 33 1/3% support tests - 2022. If the organization did not check the box on line 14, and line 15 is more than 33 1/3%, and line 17 is not more than 33 1/3%, check this box and stop here. The organization qualifies as a publicly supported organization

b 33 1/3% support tests - 2021. If the organization did not check a box on line 14 or line 19a, and line 16 is more than 33 1/3%, and line 18 is not more than 33 1/3%, check this box and stop here. The organization qualifies as a publicly supported organization

20 Private foundation. If the organization did not check a box on line 14, 19a, or 19b, check this box and see instructions

Part IV Supporting Organizations

(Complete only if you checked a box on line 12 of Part I. If you checked box 12a, Part I, complete Sections A and B. If you checked box 12b, Part I, complete Sections A and C. If you checked box 12c, Part I, complete Sections A, D, and E. If you checked box 12d, Part I, complete Sections A and D, and complete Part V.)

Section A. All Supporting Organizations

Table with 3 columns: Question, Yes, No. Rows include questions 1 through 10b regarding supported organizations, such as 'Are all of the organization's supported organizations listed by name...', 'Did the organization have any supported organization that does not have an IRS determination of status...', etc.

Part IV Supporting Organizations (continued)

- 11 Has the organization accepted a gift or contribution from any of the following persons?
 - a A person who directly or indirectly controls, either alone or together with persons described on lines 11b and 11c below, the governing body of a supported organization?
 - b A family member of a person described on line 11a above?
 - c A 35% controlled entity of a person described on line 11a or 11b above? If "Yes" to line 11a, 11b, or 11c, provide detail in Part VI.

	Yes	No
11a		
11b		
11c		

Section B. Type I Supporting Organizations

- 1 Did the governing body, members of the governing body, officers acting in their official capacity, or membership of one or more supported organizations have the power to regularly appoint or elect at least a majority of the organization's officers, directors, or trustees at all times during the tax year? If "No," describe in Part VI how the supported organization(s) effectively operated, supervised, or controlled the organization's activities. If the organization had more than one supported organization, describe how the powers to appoint and/or remove officers, directors, or trustees were allocated among the supported organizations and what conditions or restrictions, if any, applied to such powers during the tax year.
- 2 Did the organization operate for the benefit of any supported organization other than the supported organization(s) that operated, supervised, or controlled the supporting organization? If "Yes," explain in Part VI how providing such benefit carried out the purposes of the supported organization(s) that operated, supervised, or controlled the supporting organization.

	Yes	No
1		
2		

Section C. Type II Supporting Organizations

- 1 Were a majority of the organization's directors or trustees during the tax year also a majority of the directors or trustees of each of the organization's supported organization(s)? If "No," describe in Part VI how control or management of the supporting organization was vested in the same persons that controlled or managed the supported organization(s).

	Yes	No
1		

Section D. All Type III Supporting Organizations

- 1 Did the organization provide to each of its supported organizations, by the last day of the fifth month of the organization's tax year, (i) a written notice describing the type and amount of support provided during the prior tax year, (ii) a copy of the Form 990 that was most recently filed as of the date of notification, and (iii) copies of the organization's governing documents in effect on the date of notification, to the extent not previously provided?
- 2 Were any of the organization's officers, directors, or trustees either (i) appointed or elected by the supported organization(s) or (ii) serving on the governing body of a supported organization? If "No," explain in Part VI how the organization maintained a close and continuous working relationship with the supported organization(s).
- 3 By reason of the relationship described on line 2, above, did the organization's supported organizations have a significant voice in the organization's investment policies and in directing the use of the organization's income or assets at all times during the tax year? If "Yes," describe in Part VI the role the organization's supported organizations played in this regard.

	Yes	No
1		
2		
3		

Section E. Type III Functionally Integrated Supporting Organizations

- 1 Check the box next to the method that the organization used to satisfy the Integral Part Test during the year (see instructions).
 - a The organization satisfied the Activities Test. Complete line 2 below.
 - b The organization is the parent of each of its supported organizations. Complete line 3 below.
 - c The organization supported a governmental entity. Describe in Part VI how you supported a governmental entity (see instructions).

2 Activities Test. Answer lines 2a and 2b below.

- a Did substantially all of the organization's activities during the tax year directly further the exempt purposes of the supported organization(s) to which the organization was responsive? If "Yes," then in Part VI identify those supported organizations and explain how these activities directly furthered their exempt purposes, how the organization was responsive to those supported organizations, and how the organization determined that these activities constituted substantially all of its activities.
 - b Did the activities described on line 2a, above, constitute activities that, but for the organization's involvement, one or more of the organization's supported organization(s) would have been engaged in? If "Yes," explain in Part VI the reasons for the organization's position that its supported organization(s) would have engaged in these activities but for the organization's involvement.
- 3 Parent of Supported Organizations. Answer lines 3a and 3b below.
- a Did the organization have the power to regularly appoint or elect a majority of the officers, directors, or trustees of each of the supported organizations? If "Yes" or "No" provide details in Part VI.
 - b Did the organization exercise a substantial degree of direction over the policies, programs, and activities of each of its supported organizations? If "Yes," describe in Part VI the role played by the organization in this regard.

	Yes	No
2a		
2b		
3a		
3b		

Part V Type III Non-Functionally Integrated 509(a)(3) Supporting Organizations

1 Check here if the organization satisfied the Integral Part Test as a qualifying trust on Nov. 20, 1970 (explain in Part VI). See instructions.
All other Type III non-functionally integrated supporting organizations must complete Sections A through E.

Section A - Adjusted Net Income		(A) Prior Year	(B) Current Year (optional)
1	Net short-term capital gain	1	
2	Recoveries of prior-year distributions	2	
3	Other gross income (see instructions)	3	
4	Add lines 1 through 3.	4	
5	Depreciation and depletion	5	
6	Portion of operating expenses paid or incurred for production or collection of gross income or for management, conservation, or maintenance of property held for production of income (see instructions)	6	
7	Other expenses (see instructions)	7	
8	Adjusted Net Income (subtract lines 5, 6, and 7 from line 4)	8	

Section B - Minimum Asset Amount		(A) Prior Year	(B) Current Year (optional)
1	Aggregate fair market value of all non-exempt-use assets (see instructions for short tax year or assets held for part of year):		
a	Average monthly value of securities	1a	
b	Average monthly cash balances	1b	
c	Fair market value of other non-exempt-use assets	1c	
d	Total (add lines 1a, 1b, and 1c)	1d	
e	Discount claimed for blockage or other factors (explain in detail in Part VI):		
2	Acquisition indebtedness applicable to non-exempt-use assets	2	
3	Subtract line 2 from line 1d.	3	
4	Cash deemed held for exempt use. Enter 0.015 of line 3 (for greater amount, see instructions).	4	
5	Net value of non-exempt-use assets (subtract line 4 from line 3)	5	
6	Multiply line 5 by 0.035.	6	
7	Recoveries of prior-year distributions	7	
8	Minimum Asset Amount (add line 7 to line 6)	8	

Section C - Distributable Amount			Current Year
1	Adjusted net income for prior year (from Section A, line 8, column A)	1	
2	Enter 0.85 of line 1.	2	
3	Minimum asset amount for prior year (from Section B, line 8, column A)	3	
4	Enter greater of line 2 or line 3.	4	
5	Income tax imposed in prior year.	5	
6	Distributable Amount. Subtract line 5 from line 4, unless subject to emergency temporary reduction (see instructions).	6	
7	<input type="checkbox"/> Check here if the current year is the organization's first as a non-functionally integrated Type III supporting organization (see instructions).		

Part V Type III Non-Functionally Integrated 509(a)(3) Supporting Organizations (continued)

Section D - Distributions		Current Year
1	Amounts paid to supported organizations to accomplish exempt purposes	1
2	Amounts paid to perform activity that directly furthers exempt purposes of supported organizations, in excess of income from activity	2
3	Administrative expenses paid to accomplish exempt purposes of supported organizations	3
4	Amounts paid to acquire exempt-use assets	4
5	Qualified set-aside amounts (prior IRS approval required - provide details in Part VI)	5
6	Other distributions (describe in Part VI). See instructions.	6
7	Total annual distributions. Add lines 1 through 6.	7
8	Distributions to attentive supported organizations to which the organization is responsive (provide details in Part VI). See instructions.	8
9	Distributable amount for 2022 from Section C, line 6	9
10	Line 8 amount divided by line 9 amount	10

Section E - Distribution Allocations (see instructions)	(i) Excess Distributions	(ii) Underdistributions Pre-2022	(iii) Distributable Amount for 2022
1	Distributable amount for 2022 from Section C, line 6		
2	Underdistributions, if any, for years prior to 2022 (reasonable cause required - explain in Part VI). See instructions.		
3	Excess distributions carryover, if any, to 2022		
a	From 2017		
b	From 2018		
c	From 2019		
d	From 2020		
e	From 2021		
f	Total of lines 3a through 3e		
g	Applied to underdistributions of prior years		
h	Applied to 2022 distributable amount		
i	Carryover from 2017 not applied (see instructions)		
j	Remainder. Subtract lines 3g, 3h, and 3i from line 3f.		
4	Distributions for 2022 from Section D, line 7: \$		
a	Applied to underdistributions of prior years		
b	Applied to 2022 distributable amount		
c	Remainder. Subtract lines 4a and 4b from line 4.		
5	Remaining underdistributions for years prior to 2022, if any. Subtract lines 3g and 4a from line 2. If result greater than zero, explain in Part VI. See instructions.		
6	Remaining underdistributions for 2022. Subtract lines 3h and 4b from line 1. For result greater than zero, explain in Part VI. See instructions.		
7	Excess distributions carryover to 2023. Add lines 3j and 4c.		
8	Breakdown of line 7:		
a	Excess from 2018		
b	Excess from 2019		
c	Excess from 2020		
d	Excess from 2021		
e	Excess from 2022		

Part VI

Supplemental Information. Provide the explanations required by Part II, line 10; Part II, line 17a or 17b; Part III, line 12; Part IV, Section A, lines 1, 2, 3b, 3c, 4b, 4c, 5a, 6, 9a, 9b, 9c, 11a, 11b, and 11c; Part IV, Section B, lines 1 and 2; Part IV, Section C, line 1; Part IV, Section D, lines 2 and 3; Part IV, Section E, lines 1c, 2a, 2b, 3a, and 3b; Part V, line 1; Part V, Section B, line 1e; Part V, Section D, lines 5, 6, and 8; and Part V, Section E, lines 2, 5, and 6. Also complete this part for any additional information. (See instructions.)

Schedule A, Part II, Line 10, Explanation for Other Income:

Other Income

2021 Amount: \$ 23,379.

2022 Amount: \$ 22,338.

PUBLIC INSPECTION COPY

Schedule B
(Form 990)

Department of the Treasury
Internal Revenue Service

Schedule of Contributors

Attach to Form 990 or Form 990-PF.
Go to www.irs.gov/Form990 for the latest information.

OMB No. 1545-0047

2022

Name of the organization

Conservative Partnership Institute

Employer identification number

82-1470217

Organization type (check one):

Filers of:

Section:

Form 990 or 990-EZ

501(c)(3) (enter number) organization

4947(a)(1) nonexempt charitable trust not treated as a private foundation

527 political organization

Form 990-PF

501(c)(3) exempt private foundation

4947(a)(1) nonexempt charitable trust treated as a private foundation

501(c)(3) taxable private foundation

Check if your organization is covered by the **General Rule** or a **Special Rule**.

Note: Only a section 501(c)(7), (8), or (10) organization can check boxes for both the General Rule and a Special Rule. See instructions.

General Rule

For an organization filing Form 990, 990-EZ, or 990-PF that received, during the year, contributions totaling \$5,000 or more (in money or property) from any one contributor. Complete Parts I and II. See instructions for determining a contributor's total contributions.

Special Rules

For an organization described in section 501(c)(3) filing Form 990 or 990-EZ that met the 33 1/3% support test of the regulations under sections 509(a)(1) and 170(b)(1)(A)(vi), that checked Schedule A (Form 990), Part II, line 13, 16a, or 16b, and that received from any one contributor, during the year, total contributions of the greater of (1) \$5,000; or (2) 2% of the amount on (i) Form 990, Part VIII, line 1h; or (ii) Form 990-EZ, line 1. Complete Parts I and II.

For an organization described in section 501(c)(7), (8), or (10) filing Form 990 or 990-EZ that received from any one contributor, during the year, total contributions of more than \$1,000 exclusively for religious, charitable, scientific, literary, or educational purposes, or for the prevention of cruelty to children or animals. Complete Parts I (entering "N/A" in column (b) instead of the contributor name and address), II, and III.

For an organization described in section 501(c)(7), (8), or (10) filing Form 990 or 990-EZ that received from any one contributor, during the year, contributions exclusively for religious, charitable, etc., purposes, but no such contributions totaled more than \$1,000. If this box is checked, enter here the total contributions that were received during the year for an exclusively religious, charitable, etc., purpose. Don't complete any of the parts unless the General Rule applies to this organization because it received nonexclusively religious, charitable, etc., contributions totaling \$5,000 or more during the year \$ _____

Caution: An organization that isn't covered by the General Rule and/or the Special Rules doesn't file Schedule B (Form 990), but it must answer "No" on Part IV, line 2, of its Form 990; or check the box on line H of its Form 990-EZ or on its Form 990-PF, Part I, line 2, to certify that it doesn't meet the filing requirements of Schedule B (Form 990).

Name of organization

Employer identification number

Conservative Partnership Institute

82-1470217

Part I Contributors (see instructions). Use duplicate copies of Part I if additional space is needed.

(a) No.	(b) Name, address, and ZIP + 4	(c) Total contributions	(d) Type of contribution
1		\$ 15,551,240.	Person <input checked="" type="checkbox"/> Payroll <input type="checkbox"/> Noncash <input type="checkbox"/> (Complete Part II for noncash contributions.)
2		\$ 5,237,858.	Person <input checked="" type="checkbox"/> Payroll <input type="checkbox"/> Noncash <input type="checkbox"/> (Complete Part II for noncash contributions.)
3		\$ 1,000,000.	Person <input checked="" type="checkbox"/> Payroll <input type="checkbox"/> Noncash <input type="checkbox"/> (Complete Part II for noncash contributions.)
4		\$ 800,000.	Person <input checked="" type="checkbox"/> Payroll <input type="checkbox"/> Noncash <input type="checkbox"/> (Complete Part II for noncash contributions.)
		\$	Person <input type="checkbox"/> Payroll <input type="checkbox"/> Noncash <input type="checkbox"/> (Complete Part II for noncash contributions.)
		\$	Person <input type="checkbox"/> Payroll <input type="checkbox"/> Noncash <input type="checkbox"/> (Complete Part II for noncash contributions.)

PUBLIC INSPECTION COPY

Name of organization

Employer identification number

Conservative Partnership Institute

82-1470217

Part II Noncash Property (see instructions). Use duplicate copies of Part II if additional space is needed.

(a) No. from Part I	(b) Description of noncash property given	(c) FMV (or estimate) (See instructions.)	(d) Date received
		\$ _____	
		\$ _____	
		\$ _____	
		\$ _____	
		\$ _____	
		\$ _____	
		\$ _____	
		\$ _____	
		\$ _____	
		\$ _____	

PUBLIC INSPECTION COPY

Name of organization

Employer identification number

Conservative Partnership Institute

82-1470217

Part III Exclusively religious, charitable, etc., contributions to organizations described in section 501(c)(7), (8), or (10) that total more than \$1,000 for the year from any one contributor. Complete columns (a) through (e) and the following line entry. For organizations completing Part III, enter the total of exclusively religious, charitable, etc., contributions of \$1,000 or less for the year. (Enter this info. once.) \$ _____
Use duplicate copies of Part III if additional space is needed.

(a) No. from Part I	(b) Purpose of gift	(c) Use of gift	(d) Description of how gift is held
(e) Transfer of gift			
Transferee's name, address, and ZIP + 4		Relationship of transferor to transferee	
(e) Transfer of gift			
Transferee's name, address, and ZIP + 4		Relationship of transferor to transferee	
(e) Transfer of gift			
Transferee's name, address, and ZIP + 4		Relationship of transferor to transferee	
(e) Transfer of gift			
Transferee's name, address, and ZIP + 4		Relationship of transferor to transferee	

PUBLIC INSPECTION COPY

SCHEDULE D (Form 990)

Department of the Treasury Internal Revenue Service

Supplemental Financial Statements

Complete if the organization answered "Yes" on Form 990, Part IV, line 6, 7, 8, 9, 10, 11a, 11b, 11c, 11d, 11e, 11f, 12a, or 12b. Attach to Form 990.

Go to www.irs.gov/Form990 for instructions and the latest information.

OMB No. 1545-0047

2022

Open to Public Inspection

Name of the organization

Conservative Partnership Institute

Employer identification number

82-1470217

Part I Organizations Maintaining Donor Advised Funds or Other Similar Funds or Accounts. Complete if the organization answered "Yes" on Form 990, Part IV, line 6.

Table with 2 columns: (a) Donor advised funds, (b) Funds and other accounts. Rows include: 1 Total number at end of year, 2 Aggregate value of contributions to (during year), 3 Aggregate value of grants from (during year), 4 Aggregate value at end of year, 5 Did the organization inform all donors and donor advisors in writing that the assets held in donor advised funds are the organization's property, subject to the organization's exclusive legal control?, 6 Did the organization inform all grantees, donors, and donor advisors in writing that grant funds can be used only for charitable purposes and not for the benefit of the donor or donor advisor, or for any other purpose conferring impermissible private benefit?

Part II Conservation Easements. Complete if the organization answered "Yes" on Form 990, Part IV, line 7.

Table with 2 columns: Description, Held at the End of the Tax Year. Rows include: 1 Purpose(s) of conservation easements held by the organization (check all that apply), 2 Complete lines 2a through 2d if the organization held a qualified conservation contribution in the form of a conservation easement on the last day of the tax year, 3 Number of conservation easements modified, transferred, released, extinguished, or terminated by the organization during the tax year, 4 Number of states where property subject to conservation easement is located, 5 Does the organization have a written policy regarding the periodic monitoring, inspection, handling of violations, and enforcement of the conservation easements it holds?, 6 Staff and volunteer hours devoted to monitoring, inspecting, handling of violations, and enforcing conservation easements during the year, 7 Amount of expenses incurred in monitoring, inspecting, handling of violations, and enforcing conservation easements during the year, 8 Does each conservation easement reported on line 2(d) above satisfy the requirements of section 170(h)(4)(B)(i) and section 170(h)(4)(B)(ii)?, 9 In Part XIII, describe how the organization reports conservation easements in its revenue and expense statement and balance sheet, and include, if applicable, the text of the footnote to the organization's financial statements that describes the organization's accounting for conservation easements.

Part III Organizations Maintaining Collections of Art, Historical Treasures, or Other Similar Assets.

Complete if the organization answered "Yes" on Form 990, Part IV, line 8.

Table with 2 columns: Description, Amount. Rows include: 1a If the organization elected, as permitted under FASB ASC 958, not to report in its revenue statement and balance sheet works of art, historical treasures, or other similar assets held for public exhibition, education, or research in furtherance of public service, provide in Part XIII the text of the footnote to its financial statements that describes these items. b If the organization elected, as permitted under FASB ASC 958, to report in its revenue statement and balance sheet works of art, historical treasures, or other similar assets held for public exhibition, education, or research in furtherance of public service, provide the following amounts relating to these items: (i) Revenue included on Form 990, Part VIII, line 1, (ii) Assets included in Form 990, Part X, 2 If the organization received or held works of art, historical treasures, or other similar assets for financial gain, provide the following amounts required to be reported under FASB ASC 958 relating to these items: a Revenue included on Form 990, Part VIII, line 1, b Assets included in Form 990, Part X

LHA For Paperwork Reduction Act Notice, see the Instructions for Form 990.

Schedule D (Form 990) 2022

Part III Organizations Maintaining Collections of Art, Historical Treasures, or Other Similar Assets (continued)

- 3 Using the organization's acquisition, accession, and other records, check any of the following that make significant use of its collection items (check all that apply):
- a Public exhibition
 - b Scholarly research
 - c Preservation for future generations
 - d Loan or exchange program
 - e Other _____
- 4 Provide a description of the organization's collections and explain how they further the organization's exempt purpose in Part XIII.
- 5 During the year, did the organization solicit or receive donations of art, historical treasures, or other similar assets to be sold to raise funds rather than to be maintained as part of the organization's collection? Yes No

Part IV Escrow and Custodial Arrangements. Complete if the organization answered "Yes" on Form 990, Part IV, line 9, or reported an amount on Form 990, Part X, line 21.

- 1a Is the organization an agent, trustee, custodian or other intermediary for contributions or other assets not included on Form 990, Part X? Yes No
- b If "Yes," explain the arrangement in Part XIII and complete the following table:
- | | Amount |
|---------------------------------|--------|
| c Beginning balance | 1c |
| d Additions during the year | 1d |
| e Distributions during the year | 1e |
| f Ending balance | 1f |
- 2a Did the organization include an amount on Form 990, Part X, line 21, for escrow or custodial account liability? Yes No
- b If "Yes," explain the arrangement in Part XIII. Check here if the explanation has been provided on Part XIII

Part V Endowment Funds. Complete if the organization answered "Yes" on Form 990, Part IV, line 10.

	(a) Current year	(b) Prior year	(c) Two years back	(d) Three years back	(e) Four years back
1a Beginning of year balance					
b Contributions					
c Net investment earnings, gains, and losses					
d Grants or scholarships					
e Other expenditures for facilities and programs					
f Administrative expenses					
g End of year balance					

- 2 Provide the estimated percentage of the current year end balance (line 1g, column (a)) held as:
- a Board designated or quasi-endowment _____ %
 - b Permanent endowment _____ %
 - c Term endowment _____ %
- The percentages on lines 2a, 2b, and 2c should equal 100%.
- 3a Are there endowment funds not in the possession of the organization that are held and administered for the organization by:
- | | Yes | No |
|---|--------|----|
| (i) Unrelated organizations | 3a(i) | |
| (ii) Related organizations | 3a(ii) | |
| b If "Yes" on line 3a(i), are the related organizations listed as required on Schedule R? | 3b | |
- 4 Describe in Part XIII the intended uses of the organization's endowment funds.

Part VI Land, Buildings and Equipment.

Complete if the organization answered "Yes" on Form 990, Part IV, line 11a. See Form 990, Part X, line 10.

Description of property	(a) Cost or other basis (Investment)	(b) Cost or other basis (other)	(c) Accumulated depreciation	(d) Book value
1a Land		6,747,520.		6,747,520.
b Buildings		25,571,036.	149,897.	25,421,139.
c Leasehold improvements		4,452.	4,452.	0.
d Equipment		1,105,873.	346,375.	759,498.
e Other		883,587.		883,587.
Total. Add lines 1a through 1e. (Column (d) must equal Form 990, Part X, column (B), line 10c.)				33,811,744.

Part VII Investments - Other Securities.

Complete if the organization answered "Yes" on Form 990, Part IV, line 11b. See Form 990, Part X, line 12.

(a) Description of security or category (including name of security)	(b) Book value	(c) Method of valuation: Cost or end-of-year market value
(1) Financial derivatives		
(2) Closely held equity interests		
(3) Other		
(A)		
(B)		
(C)		
(D)		
(E)		
(F)		
(G)		
(H)		
Total. (Col. (b) must equal Form 990, Part X, col. (B) line 12.)		

Part VIII Investments - Program Related.

Complete if the organization answered "Yes" on Form 990, Part IV, line 11c. See Form 990, Part X, line 13.

(a) Description of investment	(b) Book value	(c) Method of valuation: Cost or end-of-year market value
(1)		
(2)		
(3)		
(4)		
(5)		
(6)		
(7)		
(8)		
(9)		
Total. (Col. (b) must equal Form 990, Part X, col. (B) line 13.)		

Part IX Other Assets.

Complete if the organization answered "Yes" on Form 990, Part IV, line 11d. See Form 990, Part X, line 15.

(a) Description	(b) Book value
(1) Deposits & R/E Escrow	2,000,000.
(2) Security deposit	119,239.
(3) Loan	429,000.
(4) Right-of-use assets - operating lease	3,136,430.
(5)	
(6)	
(7)	
(8)	
(9)	
Total. (Column (b) must equal Form 990, Part X, col. (B) line 15.)	

Part X Other Liabilities

Complete if the organization answered "Yes" on Form 990, Part IV, line 11e or 11f. See Form 990, Part X, line 25.

(a) Description of liability	(b) Book value
1. (1) Federal income taxes	
(2) Deposits	47,350.
(3) Lease liabilities - operating	
(4) leases	3,176,490.
(5)	
(6)	
(7)	
(8)	
(9)	
Total. (Column (b) must equal Form 990, Part X, col. (B) line 25.)	

2. Liability for uncertain tax positions. In Part XIII, provide the text of the footnote to the organization's financial statements that reports the organization's liability for uncertain tax positions under FASB ASC 740. Check here if the text of the footnote has been provided in Part XIII

Part XI Reconciliation of Revenue per Audited Financial Statements With Revenue per Return.

Complete if the organization answered "Yes" on Form 990, Part IV, line 12a.

1	Total revenue, gains, and other support per audited financial statements		1	36,745,912.
2	Amounts included on line 1 but not on Form 990, Part VIII, line 12:			
	a Net unrealized gains (losses) on investments	2a		
	b Donated services and use of facilities	2b		
	c Recoveries of prior year grants	2c		
	d Other (Describe in Part XIII.)	2d	348,458.	
	e Add lines 2a through 2d		2e	348,458.
3	Subtract line 2e from line 1		3	36,397,454.
4	Amounts included on Form 990, Part VIII, line 12, but not on line 1:			
	a Investment expenses not included on Form 990, Part VIII, line 7b	4a		
	b Other (Describe in Part XIII.)	4b		
	c Add lines 4a and 4b		4c	0.
5	Total revenue. Add lines 3 and 4c. (This must equal Form 990, Part I, line 12.)		5	36,397,454.

Part XII Reconciliation of Expenses per Audited Financial Statements With Expenses per Return.

Complete if the organization answered "Yes" on Form 990, Part IV, line 12a.

1	Total expenses and losses per audited financial statements		1	23,712,332.
2	Amounts included on line 1 but not on Form 990, Part IX, line 25:			
	a Donated services and use of facilities	2a		
	b Prior year adjustments	2b		
	c Other losses	2c		
	d Other (Describe in Part XIII.)	2d	348,458.	
	e Add lines 2a through 2d		2e	348,458.
3	Subtract line 2e from line 1		3	23,363,874.
4	Amounts included on Form 990, Part IX, line 25, but not on line 1:			
	a Investment expenses not included on Form 990, Part VIII, line 7b	4a		
	b Other (Describe in Part XIII.)	4b		
	c Add lines 4a and 4b		4c	0.
5	Total expenses. Add lines 3 and 4c. (This must equal Form 990, Part IX, line 18.)		5	23,363,874.

Part XIII Supplemental Information.

Provide the descriptions required for Part II, lines 3, 5, and 9; Part III, lines 1a and 4; Part IV, lines 1b and 2b; Part V, line 4; Part X, line 2; Part XI, lines 2d and 4b; and Part XII, lines 2d and 4b. Also complete this part to provide any additional information.

Part X, Line 2:

Management has evaluated the Organization's tax positions and concluded that the consolidated financial statements do not include any uncertain tax positions

Part XI, Line 2d - Other Adjustments:

Rental expense 348,458.

Part XII, Line 2d - Other Adjustments:

Rental expense 348,458.

Part XIII Supplemental Information *(continued)*

PUBLIC INSPECTION COPY

SCHEDULE I
(Form 990)

Department of the Treasury
Internal Revenue Service

Grants and Other Assistance to Organizations,
Governments, and Individuals in the United States

Complete if the organization answered "Yes" on Form 990, Part IV, line 21 or 22.
Attach to Form 990.
Go to www.irs.gov/Form990 for the latest information.

OMB No. 1545-0047

2022

Open to Public
Inspection

Name of the organization

Conservative Partnership Institute

Employer identification number
82-1470217

Part I General Information on Grants and Assistance

- 1 Does the organization maintain records to substantiate the amount of the grants or assistance, the grantees' eligibility for the grants or assistance, and the selection criteria used to award the grants or assistance? Yes No
- 2 Describe in Part IV the organization's procedures for monitoring the use of grant funds in the United States.

Part II Grants and Other Assistance to Domestic Organizations and Domestic Governments. Complete if the organization answered "Yes" on Form 990, Part IV, line 21, for any recipient that received more than \$5,000. Part II can be duplicated if additional space is needed.

1 (a) Name and address of organization or government	(b) EIN	(c) IRC section (if applicable)	(d) Amount of cash grant	(e) Amount of noncash assistance	(f) Method of valuation (book, FMV, appraisal, other)	(g) Description of noncash assistance	(h) Purpose of grant or assistance
America First Legal Foundation 300 Independence Ave SE Washington, DC 20003	86-2190372	501(c)(3)	30,290.	0.			Mission and program support
American Accountability Foundation 300 Independence Ave SE Washington, DC 20003	85-4391204	501(c)(3)	10,000.	0.			Mission and program support
American Main Street Initiative, Inc. - 300 Independence Ave SE - Washington, DC 20003	87-3579772	501(c)(3)	88,500.	0.			Mission and program support
Center for Renewing America 300 Independence Ave SE Washington, DC 20003	85-4307005	501(c)(3)	1,347,000.	0.			Mission and program support
Conservative Partnership Initiative - 300 Independence Ave SE - Washington, DC 20003	82-1470217	501(c)(3)	10,000.	0.			Mission and program support
Election Integrity Network, Inc. 300 Independence Ave SE Washington, DC 20003	86-2166493	501(c)(4)	525,000.	0.			Mission and program support

- 2 Enter total number of section 501(c)(3) and government organizations listed in the line 1 table 9.
- 3 Enter total number of other organizations listed in the line 1 table 2.

LHA For Paperwork Reduction Act Notice, see the Instructions for Form 990.

Schedule I (Form 990) 2022

Part II Continuation of Grants and Other Assistance to Domestic Organizations and Domestic Governments (Schedule I (Form 990), Part II.)

(a) Name and address of organization or government	(b) EIN	(c) IRC section if applicable	(d) Amount of cash grant	(e) Amount of non-cash assistance	(f) Method of valuation (book, FMV, appraisal, other)	(g) Description of non-cash assistance	(h) Purpose of grant or assistance
Election Integrity Project Inc 5100 Peachtree Pkwy, Ste 200 Peachtree Corners, GA 30092	87-1277640	501(c)(4)	5,505.	0.			Mission and program support
FDRIST Media Foundation 1747 Pennsylvania Ave NW Washington, DC 20006	82-5231395	501(c)(3)	175,000.	0.			Mission and program support
Personnel Policy Organization, Inc. - 300 Independence Ave SE - Washington, DC 20003	88-1773801	501(c)(3)	1,150,000.				Mission and program support
State Freedom Caucus Foundation 300 Independence Ave SE Washington, DC 20003	88-3060056	501(c)(3)	467,748.	0.			Mission and program support
Virginia Institute for Public Policy - PO Box 76 - Lexington, VA 24450	54-1870840	501(c)(3)	175,000.	0.			Mission and program support

PUBLIC INSPECTION COPY

Part III Grants and Other Assistance to Domestic Individuals. Complete if the organization answered "Yes" on Form 990, Part IV, line 22.
Part III can be duplicated if additional space is needed.

(a) Type of grant or assistance	(b) Number of recipients	(c) Amount of cash grant	(d) Amount of non-cash assistance	(e) Method of valuation (book, FMV, appraisal, other)	(f) Description of noncash assistance

Part IV Supplemental Information. Provide the information required in Part I, line 2, Part III, column (b); and any other additional information.

Part I, Line 2:

Periodic reports of the use of grant awards are required of the grantee organization's leadership to the management at Conservative Partnership Institute.

PUBLIC INSPECTION COPY

**SCHEDULE J
(Form 990)**

Department of the Treasury
Internal Revenue Service

Compensation Information

For certain Officers, Directors, Trustees, Key Employees, and Highest Compensated Employees
Complete if the organization answered "Yes" on Form 990, Part IV, line 23.
Attach to Form 990.
Go to www.irs.gov/Form990 for instructions and the latest information.

OMB No. 1545-0047

2022

Open to Public Inspection

Name of the organization

Conservative Partnership Institute

Employer identification number
82-1470217

Part I Questions Regarding Compensation

	Yes	No
1a Check the appropriate box(es) if the organization provided any of the following to or for a person listed on Form 990, Part VII, Section A, line 1a. Complete Part III to provide any relevant information regarding these items.		
<input type="checkbox"/> First-class or charter travel		
<input type="checkbox"/> Travel for companions		
<input type="checkbox"/> Tax indemnification and gross-up payments		
<input type="checkbox"/> Discretionary spending account		
<input type="checkbox"/> Housing allowance or residence for personal use		
<input type="checkbox"/> Payments for business use of personal residence		
<input type="checkbox"/> Health or social club dues or initiation fees		
<input type="checkbox"/> Personal services (such as maid, chauffeur, chef)		
b If any of the boxes on line 1a are checked, did the organization follow a written policy regarding payment or reimbursement or provision of all of the expenses described above? If "No," complete Part III to explain	1b	
2 Did the organization require substantiation prior to reimbursing or allowing expenses incurred by all directors, trustees, and officers, including the CEO/Executive Director, regarding the items checked on line 1a?	2	
3 Indicate which, if any, of the following the organization used to establish the compensation of the organization's CEO/Executive Director. Check all that apply. Do not check any boxes for methods used by a related organization to establish compensation of the CEO/Executive Director, but explain in Part III.		
<input type="checkbox"/> Compensation committee		
<input type="checkbox"/> Independent compensation consultant		
<input type="checkbox"/> Form 990 of other organizations		
<input type="checkbox"/> Written employment contract		
<input checked="" type="checkbox"/> Compensation survey or study		
<input checked="" type="checkbox"/> Approval by the board or compensation committee		
4 During the year, did any person listed on Form 990, Part VII, Section A, line 1a, with respect to the filing organization or a related organization:		
a Receive a severance payment or change-of-control payment?	4a	X
b Participate in or receive payment from a supplemental nonqualified retirement plan?	4b	X
c Participate in or receive payment from an equity-based compensation arrangement?	4c	X
If "Yes" to any of lines 4a-c, list the persons and provide the applicable amounts for each item in Part III.		
Only section 501(c)(3), 501(c)(4), and 501(c)(29) organizations must complete lines 5-9.		
5 For persons listed on Form 990, Part VII, Section A, line 1a, did the organization pay or accrue any compensation contingent on the revenues of:		
a The organization?	5a	X
b Any related organization?	5b	X
If "Yes" on line 5a or 5b, describe in Part III.		
6 For persons listed on Form 990, Part VII, Section A, line 1a, did the organization pay or accrue any compensation contingent on the net earnings of:		
a The organization?	6a	X
b Any related organization?	6b	X
If "Yes" on line 6a or 6b, describe in Part III.		
7 For persons listed on Form 990, Part VII, Section A, line 1a, did the organization provide any nonfixed payments not described on lines 5 and 6? If "Yes," describe in Part III	7	X
8 Were any amounts reported on Form 990, Part VII, paid or accrued pursuant to a contract that was subject to the initial contract exception described in Regulations section 53.4958-4(a)(3)? If "Yes," describe in Part III	8	X
9 If "Yes" on line 8, did the organization also follow the rebuttable presumption procedure described in Regulations section 53.4958-6(c)?	9	

LHA For Paperwork Reduction Act Notice, see the instructions for Form 990.

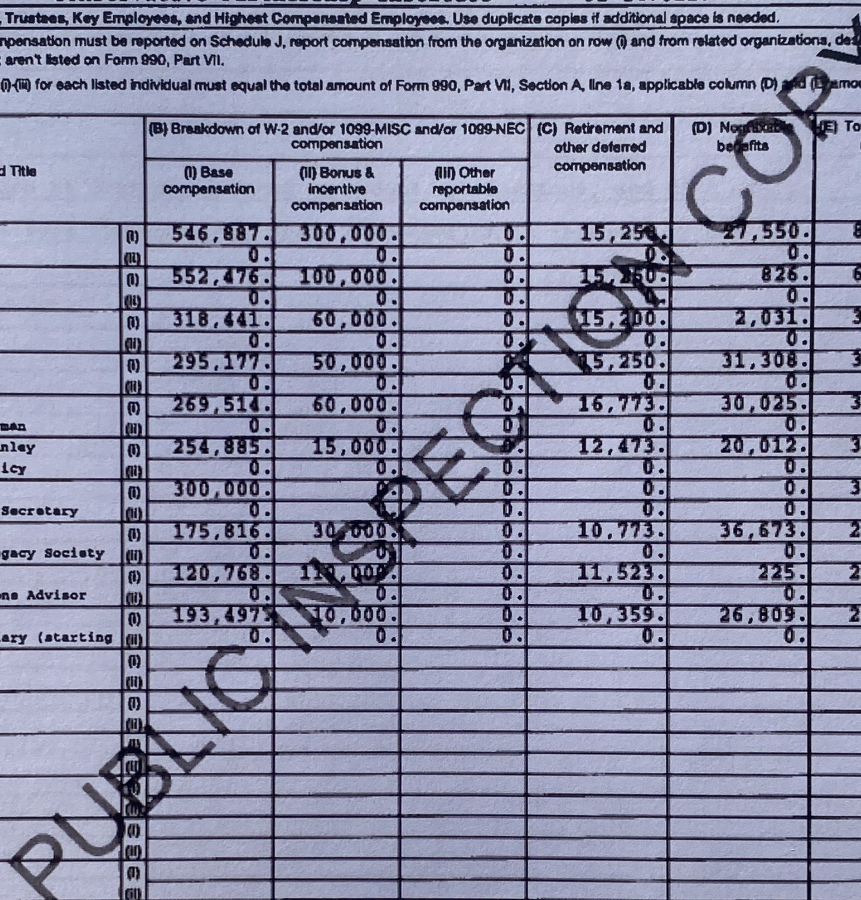
Schedule J (Form 990) 2022

Part II Officers, Directors, Trustees, Key Employees, and Highest Compensated Employees. Use duplicate copies if additional space is needed.

For each individual whose compensation must be reported on Schedule J, report compensation from the organization on row (i) and from related organizations, described in the instructions, on row (ii). Do not list any individuals that aren't listed on Form 990, Part VII.

Note: The sum of columns (B)(i)-(iii) for each listed individual must equal the total amount of Form 990, Part VII, Section A, line 1a, applicable column (D) and (E) amounts for that individual.

(A) Name and Title		(B) Breakdown of W-2 and/or 1099-MISC and/or 1099-NEC compensation			(C) Retirement and other deferred compensation	(D) Nonretirement benefits	(E) Total of columns (B)(i)-(D)	(F) Compensation in column (B) reported as deferred on prior Form 990
		(i) Base compensation	(ii) Bonus & incentive compensation	(iii) Other reportable compensation				
(1) Mark Meadows Senior Partner	(i)	546,887.	300,000.	0.	15,256.	27,550.	889,687.	0.
	(ii)	0.	0.	0.	0.	0.	0.	0.
(2) James W. DeHint Chairman	(i)	552,476.	100,000.	0.	15,250.	826.	668,552.	0.
	(ii)	0.	0.	0.	0.	0.	0.	0.
(3) Edward Corrigan President & CEO	(i)	318,441.	60,000.	0.	15,200.	2,031.	395,672.	0.
	(ii)	0.	0.	0.	0.	0.	0.	0.
(4) Wesley Denton COO	(i)	295,177.	50,000.	0.	15,250.	31,308.	391,735.	0.
	(ii)	0.	0.	0.	0.	0.	0.	0.
(5) Doug Stamps Counselor to the Chairman	(i)	269,514.	60,000.	0.	16,773.	30,025.	376,312.	0.
	(ii)	0.	0.	0.	0.	0.	0.	0.
(6) Rachel Bovard Stanley Senior Director of Policy	(i)	254,885.	15,000.	0.	12,473.	20,012.	302,370.	0.
	(ii)	0.	0.	0.	0.	0.	0.	0.
(7) Cleta Mitchell Senior Legal Fellow & Secretary	(i)	300,000.	0.	0.	0.	0.	300,000.	0.
	(ii)	0.	0.	0.	0.	0.	0.	0.
(8) Jeffrey Triabath Sr. Advisor & Dir., Legacy Society	(i)	175,816.	30,000.	0.	10,773.	36,673.	253,262.	0.
	(ii)	0.	0.	0.	0.	0.	0.	0.
(9) Matthew Hoskins Development & Operations Advisor	(i)	120,768.	10,000.	0.	11,523.	225.	242,516.	0.
	(ii)	0.	0.	0.	0.	0.	0.	0.
(10) Cameron Seward General Counsel/Secretary (starting	(i)	193,497.	10,000.	0.	10,359.	26,809.	240,665.	0.
	(ii)	0.	0.	0.	0.	0.	0.	0.
	(i)							
	(ii)							
	(i)							
	(ii)							
	(i)							
	(ii)							
	(i)							
	(ii)							
	(i)							
	(ii)							



Part III Supplemental Information

Provide the information, explanation, or descriptions required for Part I, lines 1a, 1b, 3, 4a, 4b, 4c, 5a, 5b, 6a, 6b, 7, and 8, and for Part II. Also complete this part for any additional information.

Part I, Line 7:

Bonus compensation is determined based on budget, performance, and data on similar organizations in geographic area. Compensation is approved by the Board.

PUBLIC INSPECTION COPY

**SCHEDULE M
(Form 990)**

Department of the Treasury
Internal Revenue Service

Noncash Contributions

Complete if the organizations answered "Yes" on Form 990, Part IV, lines 29 or 30.
Attach to Form 990.
Go to www.irs.gov/Form990 for instructions and the latest information.

OMB No. 1545-0047

2022

Open to Public
Inspection

Name of the organization

Conservative Partnership Institute

Employer identification number

82-1470217

Part I	Types of Property	(a) Check if applicable	(b) Number of contributions or items contributed	(c) Noncash contribution amounts reported on Form 990, Part VIII, line 1g	(d) Method of determining noncash contribution amounts
1	Art - Works of art				
2	Art - Historical treasures				
3	Art - Fractional interests				
4	Books and publications				
5	Clothing and household goods				
6	Cars and other vehicles				
7	Boats and planes				
8	Intellectual property				
9	Securities - Publicly traded	X	9	470,376.00	
10	Securities - Closely held stock				
11	Securities - Partnership, LLC, or trust interests				
12	Securities - Miscellaneous				
13	Qualified conservation contribution - Historic structures				
14	Qualified conservation contribution - Other				
15	Real estate - Residential				
16	Real estate - Commercial				
17	Real estate - Other				
18	Collectibles				
19	Food inventory				
20	Drugs and medical supplies				
21	Taxidermy				
22	Historical artifacts				
23	Scientific specimens				
24	Archeological artifacts				
25	Other ()				
26	Other ()				
27	Other ()				
28	Other ()				

29 Number of Forms 8283 received by the organization during the tax year for contributions for which the organization completed Form 8283, Part V, Donee Acknowledgement

29

30a During the year, did the organization receive by contribution any property reported in Part I, lines 1 through 28, that it must hold for at least 3 years from the date of the initial contribution, and which isn't required to be used for exempt purposes for the entire holding period?

	Yes	No
30a		X
31		X
32a		X
33		

b If "Yes," describe the arrangement in Part II.

31 Does the organization have a gift acceptance policy that requires the review of any nonstandard contributions?

32a Does the organization hire or use third parties or related organizations to solicit, process, or sell noncash contributions?

b If "Yes," describe in Part II.

33 If the organization didn't report an amount in column (c) for a type of property for which column (a) is checked, describe in Part II.

LHA For Paperwork Reduction Act Notice, see the instructions for Form 990.

Schedule M (Form 990) 2022

Part II **Supplemental Information.** Provide the information required by Part I, lines 30b, 32b, and 33, and whether the organization is reporting in Part I, column (b), the number of contributions, the number of items received, or a combination of both. Also complete this part for any additional information.

Schedule M, Part I, Column (b):

The amount reported in Column (b) represents the number of individual contributions.

PUBLIC INSPECTION COPY

SCHEDULE O
(Form 990)

Department of the Treasury
Internal Revenue Service

Supplemental Information to Form 990 or 990-EZ

Complete to provide information for responses to specific questions on
Form 990 or 990-EZ or to provide any additional information.
Attach to Form 990 or Form 990-EZ.
Go to www.irs.gov/Form990 for the latest information.

OMB No. 1545-0047

2022

Open to Public
Inspection

Name of the organization

Conservative Partnership Institute

Employer identification number
82-1470217

Form 990, Part III, Line 1, Description of Organization Mission:

The Conservative Partnership Institute (CPI) is dedicated to providing a platform for citizen leaders, the conservative movement, Members of Congress, congressional staff and scholars to be connected. The Organization works to provide these leaders with the tools, tactics, resources, and strategies to help make them more successful in advancing conservative policy solutions.

Form 990, Part III, Line 4a, Description of Program Service:

The Conservative Partnership Institute (CPI) educates the public, government leaders and staffers, nonprofit leaders and staffers, and advocates on Capitol Hill. Specifically, CPI hosts multi-week seminars for government and nonprofit staffers on the technical knowledge required to be an effective public policy staffer. CPI also works to place qualified staffers in public policy positions in government and other nonprofit organizations.

CPI hosts policy meetings and informal gatherings for advocates, government leaders, nonprofit leaders, and their staffers, to meet and debate policy. Finally, CPI educates the public by having staffers comment on policy and procedural issues in radio and television interviews and op-eds.

Through educational seminars and training programs, in 2022 CPI trained 231 congressional staff members from dozens of congressional offices;

LHA For Paperwork Reduction Act Notice, see the Instructions for Form 990 or 990-EZ.

Schedule O (Form 990) 2022

Name of the organization

Conservative Partnership Institute

Employer identification number

82-1470217

and held 30 educational, multi-week seminars and networking events.

CPI's staffing services team received 423 requests for staff candidates and sent resumes for more than 300 open positions.

Form 990, Part VI, Section B, line 11b:

The Form 990 is prepared by an external tax preparer. A complete copy of the Form 990 is reviewed by members of management and the board of directors prior to filing with the Internal Revenue Services (IRS).

Form 990, Part VI, Section B, Line 12c:

Officers and directors are required to disclose conflict of interest.

Form 990, Part VI, Section B, Line 13:

Compensation is determined based on budget, performance, and data on similar organizations in geographic area. Compensation is approved by the Board and the process is contemporaneously documented.

Form 990, Part VI, Line 17, List of States receiving copy of Form 990:

AL, AR, CA, FL, GA, HI, IL, IN, KS, KY, MD, MA, MI, MN, MS, ND, NH, NJ, NM, NY, NC, OR, PA, RI, SC, TN, UT, VA, WV, WI

Form 990, Part VI, Section C, Line 19:

The organization makes required documents available upon request, as required by law.

Form 990, Part XII, line 2c

The organization's oversight process of audit has been consistent with

Name of the organization

Conservative Partnership Institute

Employer identification number
82-1470217

prior years.

PUBLIC INSPECTION COPY

SCHEDULE R
(Form 990)

Department of the Treasury
Internal Revenue Service

Related Organizations and Unrelated Partnerships
Complete if the organization answered "Yes" on Form 990, Part IV, line 33, 34, 35b, 36, or 37.
Attach to Form 990.

Go to www.irs.gov/Form990 for instructions and the latest information.

OMB No. 1545-0047

2022
Open to Public Inspection

Name of the organization **Conservative Partnership Institute** Employer identification number **82-1470217**

Part I Identification of Disregarded Entities. Complete if the organization answered "Yes" on Form 990, Part IV, line 33.

(a) Name, address, and EIN (if applicable) of disregarded entity	(b) Primary activity	(c) Legal domicile (state or foreign country)	(d) Total income	(e) End-of-year assets	(f) Direct controlling entity
Conservative Partnership Center LLC - 82-5472169, 300 Independence Ave SE, Washington, DC 20003	Property Management	Delaware	928,899.	1,056,718.	Conservative Partnership Institute
753 LLC 300 Independence Ave SE Washington, DC 20003	Real Estate Holding	Delaware	0.	567,277.	Conservative Partnership Institute
Brunswick Partners LLC 300 Independence Ave SE Washington, DC 20003	Real Estate Holding	Delaware	55,270.	1,982,913.	Conservative Partnership Institute
Clear Plains Holdings LLC 300 Independence Ave SE Washington, DC 20003	Real Estate Holding	Delaware	0.	9,973,438.	Conservative Partnership Institute

Part II Identification of Related Tax-Exempt Organizations. Complete if the organization answered "Yes" on Form 990, Part IV, line 34, because it had one or more related tax-exempt organizations during the tax year.

(a) Name, address, and EIN of related organization	(b) Primary activity	(c) Legal domicile (state or foreign country)	(d) Exempt Code section	(e) Public charity status (if section 501(c)(3))	(f) Direct controlling entity	(g) Section 512(b)(13) controlled entity?	
						Yes	No
American Accountability Foundation - 85-4391204, 300 Independence Ave SE, Washington, DC 20003	Public Policy	Delaware	501(c)(3)	Line 7	Conservative Partnership Institute		X

For Paperwork Reduction Act Notice, see the Instructions for Form 990.

Schedule R (Form 990) 2022

Part I Continuation of Identification of Disregarded Entities

(a) Name, address, and EIN of disregarded entity	(b) Primary activity	(c) Legal domicile (state or foreign country)	(d) Total income	(e) End-of-year assets	(f) Direct controlling entity
Federal Investors LLC 300 Independence Ave SE Washington, DC 20003	Real Estate Holding	Delaware	0.	8,449,406.	Conservative Partnership Institute
Houston Group LLC 300 Independence Ave SE Washington, DC 20003	Real Estate Holding	Delaware	8.	2,222,136.	Conservative Partnership Institute
Pennsylvania Avenue Holdings LLC 300 Independence Ave SE Washington, DC 20003	Real Estate Holding	Delaware	92,400.	6,520,809.	Conservative Partnership Institute
116 Holdings LLC 300 Independence Ave SE Washington, DC 20003	Real Estate Holding	Delaware	0.	5,239,826.	Conservative Partnership Institute
Lakenhealth Associates LLC 300 Independence Ave SE Washington, DC 20003	Real Estate Holding	Delaware	0.	0.	Conservative Partnership Institute
Newpoint LLC 300 Independence Ave SE Washington, DC 20003	Real Estate Holding	Delaware	1,507.	1,758,402.	Conservative Partnership Institute
Buron DC Partners LLC 300 Independence Ave SE Washington, DC 20003	Real Estate Holding	Delaware	0.	240,083.	Conservative Partnership Institute
Amherst Associates LLC 300 Independence Ave SE Washington, DC 20003	Real Estate Holding	Delaware	0.	0.	Conservative Partnership Institute
Clear Plains LLC 300 Independence Ave SE Washington, DC 20003	Real Estate Holding	Delaware	0.	1,215,395.	Conservative Partnership Institute
203R Associates LLC 300 Independence Ave SE Washington, DC 20003	Real Estate Holding	Delaware	0.	0.	Conservative Partnership Institute

Part III Identification of Related Organizations Taxable as a Partnership. Complete if the organization answered "Yes" on Form 990, Part IV, line 34, because it had one or more related organizations treated as a partnership during the tax year.

(a) Name, address, and EIN of related organization	(b) Primary activity	(c) Legal domicile (state or foreign country)	(d) Direct controlling entity	(e) Predominant income (related, unrelated, excluded from tax under sections 512-514)	(f) Share of total income	(g) Share of end-of-year assets	(h) Disproportionate allocations?		(i) Code V-UBI amount in box 20 of Schedule K-1 (Form 1065)	(j) General or managing partner?		(k) Percentage ownership
							Yes	No		Yes	No	

Part IV Identification of Related Organizations Taxable as a Corporation or Trust. Complete if the organization answered "Yes" on Form 990, Part IV, line 34, because it had one or more related organizations treated as a corporation or trust during the tax year.

(a) Name, address, and EIN of related organization	(b) Primary activity	(c) Legal domicile (state or foreign country)	(d) Direct controlling entity	(e) Type of entity (C corp, S corp, or trust)	(f) Share of total income	(g) Share of end-of-year assets	(h) Percentage ownership	(i) Section 512(b)(13) controlled entity?	
								Yes	No
Compass Legal Group Inc. - 86-2833005 300 Independence Ave SE Washington, DC 20003	Shared Services	DE	N/A	C CORP	N/A	N/A	N/A	X	

Part V Transactions With Related Organizations. Complete if the organization answered "Yes" on Form 990, Part IV, line 34, 35b, or 38.

Note: Complete line 1 if any entity is listed in Parts II, III, or IV of this schedule.

	Yes	No
1 During the tax year, did the organization engage in any of the following transactions with one or more related organizations listed in Parts II-IV?		
a Receipt of (i) interest, (ii) annuities, (iii) royalties, or (iv) rent from a controlled entity	X	
b Gift, grant, or capital contribution to related organization(s)	X	
c Gift, grant, or capital contribution from related organization(s)		X
d Loans or loan guarantees to or for related organization(s)	X	
e Loans or loan guarantees by related organization(s)		X
f Dividends from related organization(s)		X
g Sale of assets to related organization(s)		X
h Purchase of assets from related organization(s)		X
i Exchange of assets with related organization(s)		X
j Lease of facilities, equipment, or other assets to related organization(s)		X
k Lease of facilities, equipment, or other assets from related organization(s)		X
l Performance of services or membership or fundraising solicitations for related organization(s)		X
m Performance of services or membership or fundraising solicitations by related organization(s)	X	
n Sharing of facilities, equipment, mailing lists, or other assets with related organization(s)	X	
o Sharing of paid employees with related organization(s)		X
p Reimbursement paid to related organization(s) for expenses		X
q Reimbursement paid by related organization(s) for expenses		X
r Other transfer of cash or property to related organization(s)		X
s Other transfer of cash or property from related organization(s)		X

2 If the answer to any of the above is "Yes," see the instructions for information on who must complete this line, including covered relationships and transaction thresholds.

(a) Name of related organization	(b) Transaction type (a-s)	(c) Amount involved	(d) Method of determining amount involved
(1) Compass Legal Group, Inc.	A	50,000	FMV
(2) Compass Legal Group, Inc.	D	200,000	Cash
(3) Compass Legal Group, Inc.	M	1,089,729	FMV
(4) American Accountability Foundation	B	210,000	Cash
(5)			
(6)			

Part VI Unrelated Organizations Taxable as a Partnership. Complete if the organization answered "Yes" on Form 990, Part IV, line 37.

Provide the following information for each entity taxed as a partnership through which the organization conducted more than five percent of its activities (measured by total assets or gross revenue) that was not a related organization. See instructions regarding exclusion for certain investment partnerships.

(a) Name, address, and EIN of entity	(b) Primary activity	(c) Legal domicile (state or foreign country)	(d) Predominant income (related, unrelated, excluded from tax under sections 512-514)	(e) Any of partners sec 501(c)(3) org?		(f) Share of total income	(g) All Share of and 1/2 year assets	(h) Dispropor- tionate allocations		(i) Code V-UBI amount in box 20 of Schedule K-1 (Form 1065)	(j) General or managing partner?		(k) Percentage ownership
				Yes	No			Yes	No		Yes	No	

PUBLIC INSPECTION COPY

Part VII Supplemental Information

Provide additional information for responses to questions on Schedule R. See instructions.

PUBLIC INSPECTION COPY