

Tulare Lake Subbasin

Hearing Notice and Draft Staff Report Briefing

October 11, 2023



Office of Research, Planning, and Performance

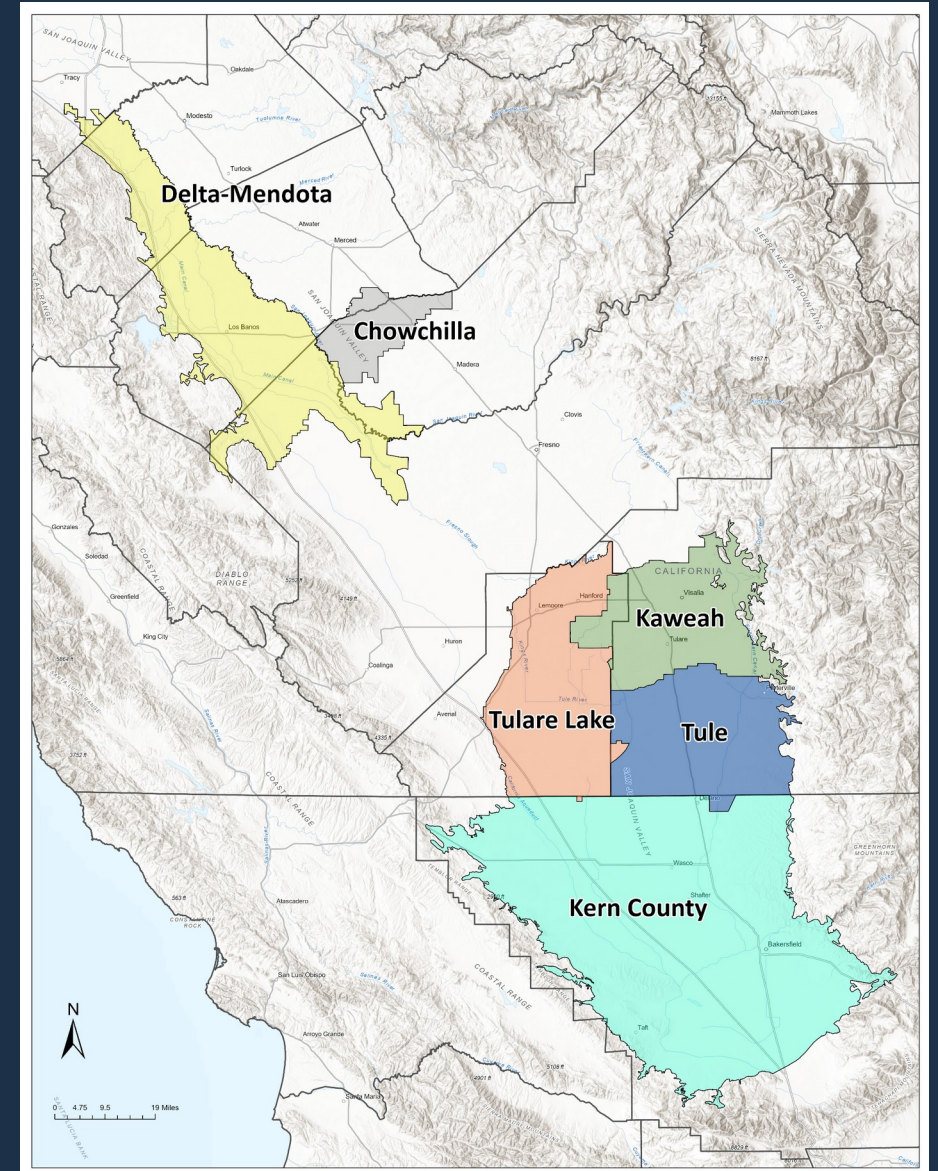
DWR Determinations

Groundwater Sustainability Plans

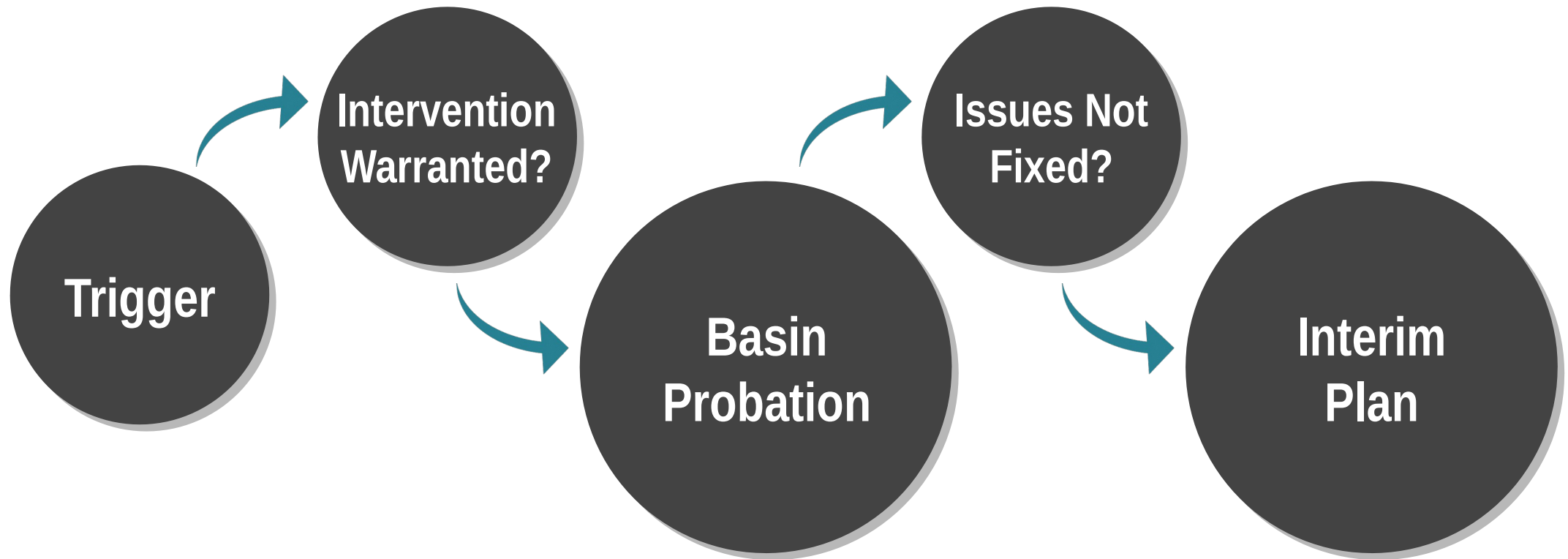
March 2023

Basins with Inadequate Plans:

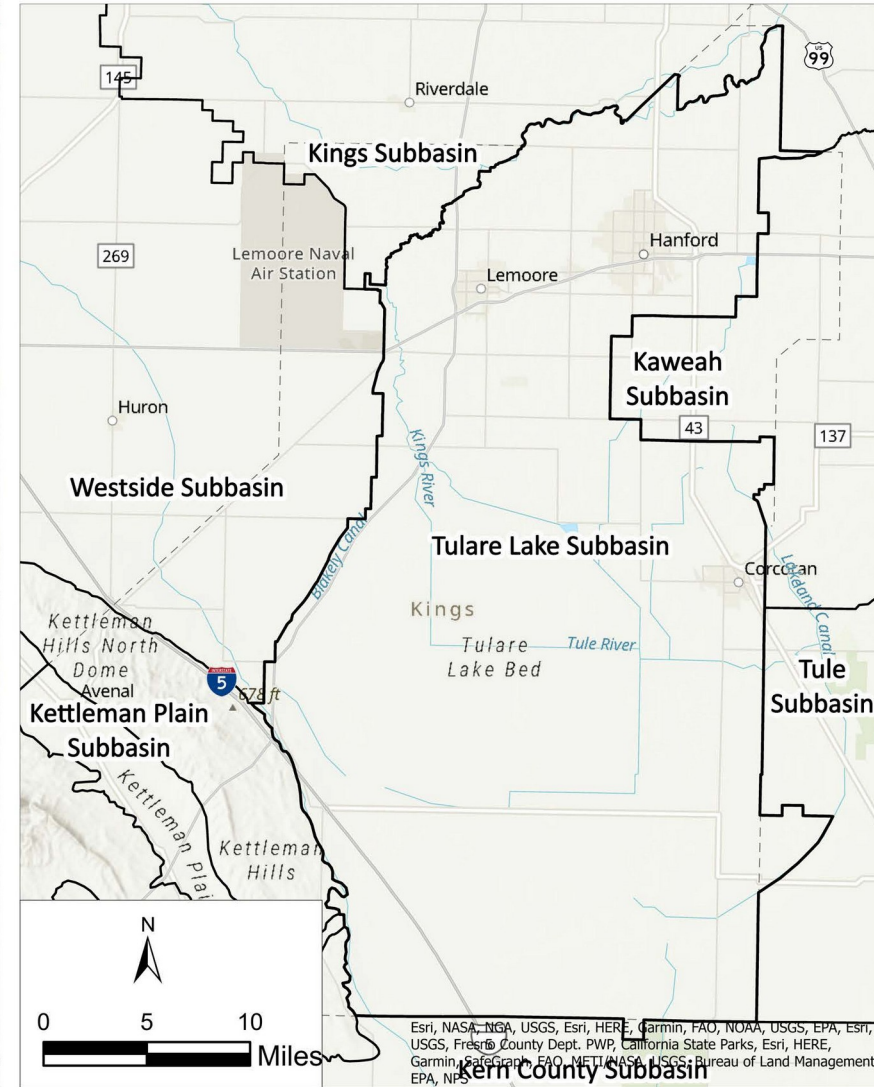
1. Delta-Mendota Subbasin
2. Chowchilla Subbasin
3. Kaweah Subbasin
4. Tulare Lake Subbasin
5. Tule Subbasin
6. Kern County Subbasin



State Intervention



Tulare Lake Subbasin



Tulare Lake Subbasin

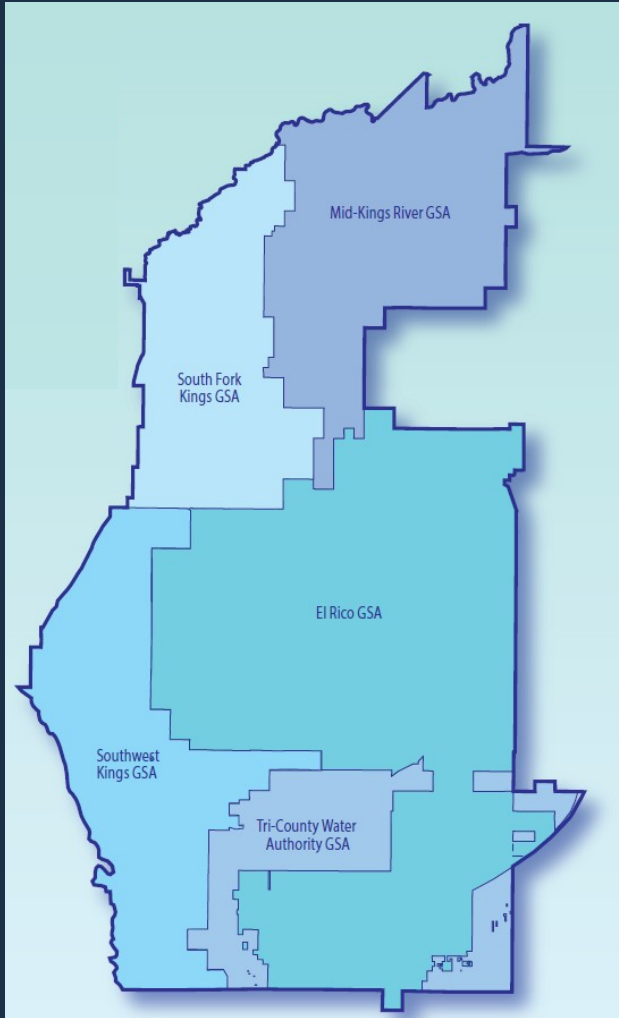


Image source: 2022 Tulare Lake Subbasin Amended GSP

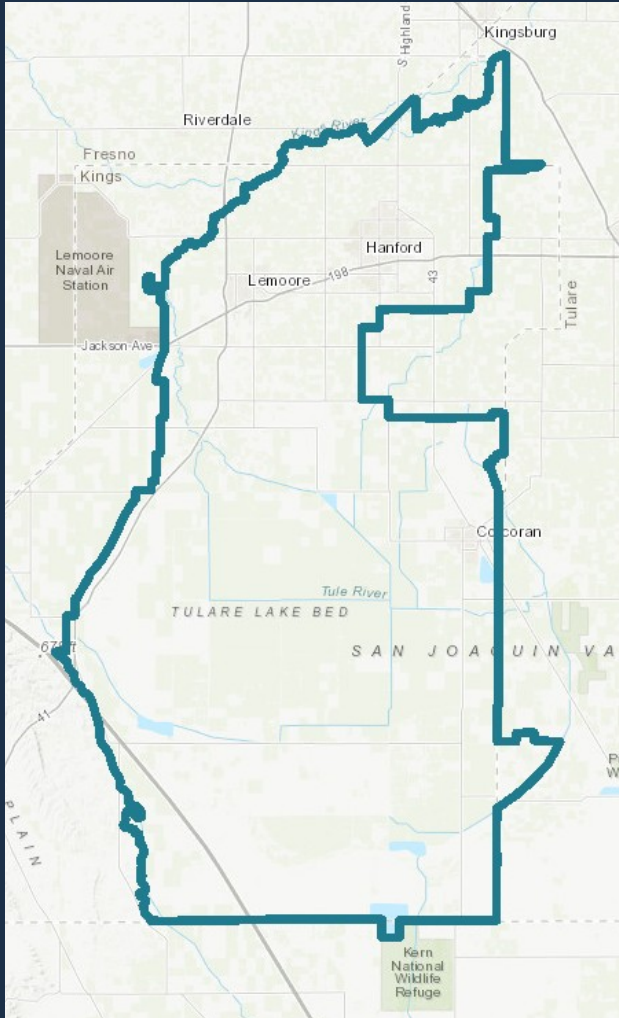
Five Groundwater Sustainability Agencies (GSAs)

- Mid-Kings River GSA
- South Fork Kings GSA
- Southwest Kings GSA
- El Rico GSA
- Tri-County Water Authority GSA

One Groundwater Sustainability Plan (GSP)

- Tulare Lake Subbasin Amended Groundwater Sustainability Plan (2022)

Tulare Lake Subbasin



Why Tulare Lake first?

- Urgent impacts to **domestic wells** from declining water levels
- Urgent impacts to **infrastructure** from subsidence
- First basin of these six to be found **inadequate**

State Intervention Timeline

If Board determines state intervention is warranted

DWR Determination
Inadequate?
Not likely to achieve sustainability

Board Consideration
Board receipt and evaluation of DWR determination

Noticing
Public notice of hearing and contact cities and counties
*At least 90 days in advance of hearing**

Board Probationary Hearing
Board decides whether probation is warranted

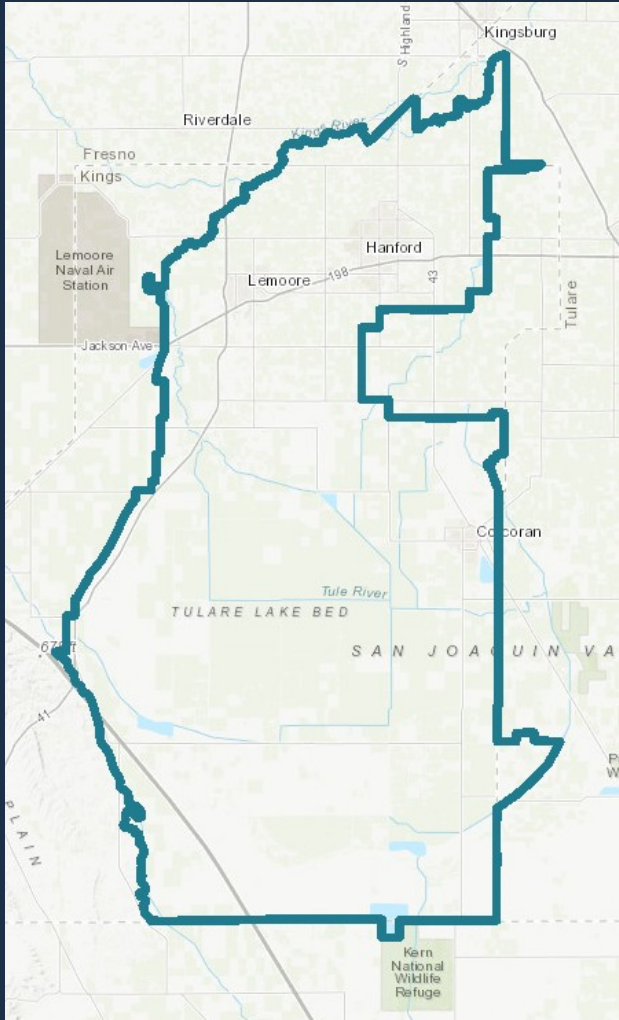
If Basin Designated Probationary
Board collects data and fees; local agencies work to fix plan

If Deficiencies are Not Cured
Board consideration of developing and adopting an interim plan
*After at least 1 year **

Board - DWR coordination

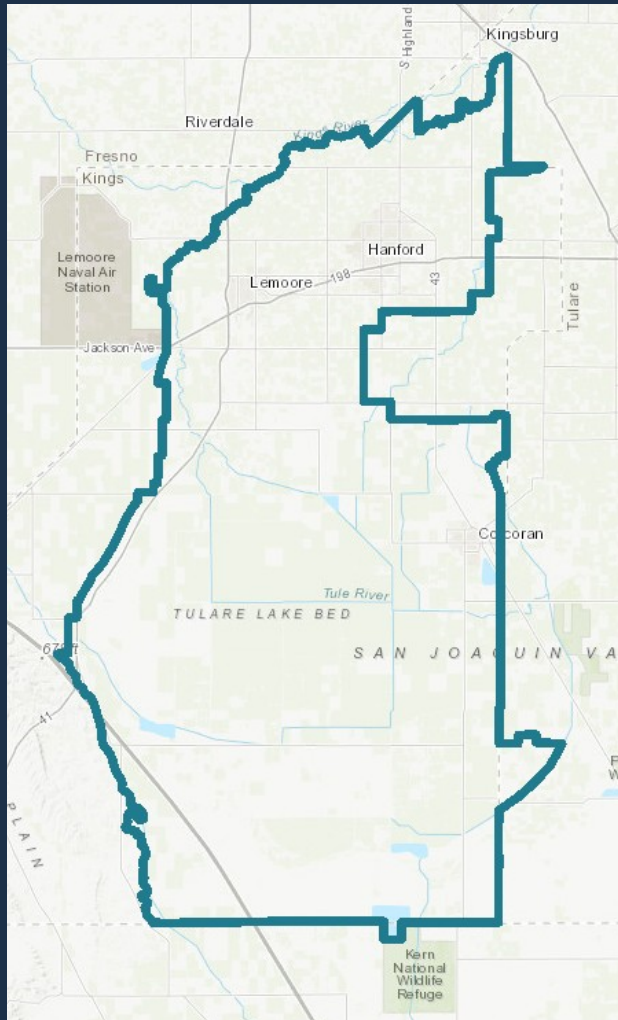
*Statutory minimum. Board has discretion.

Staff Recommendations



1. Designate the basin probationary
2. Identify the following plan deficiencies and potential actions to address them...

Plan Deficiencies



Plan does not appropriately describe and stop impacts of:



Declining water levels



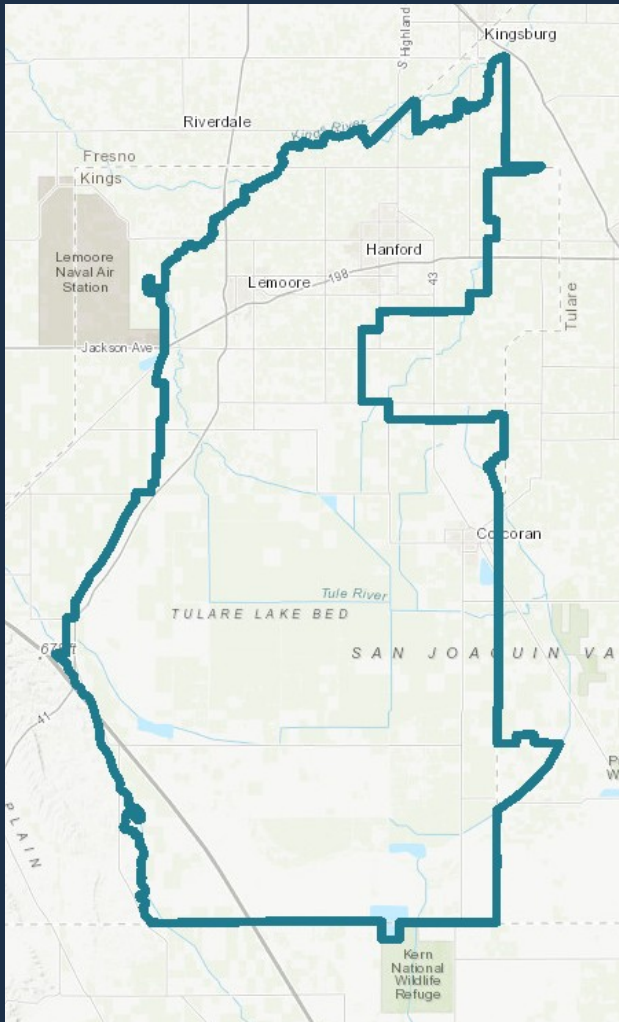
Land subsidence



Water quality degradation

Due to continued groundwater overdraft caused by pumping

Potential Actions to Fix the Plan



Include the following:



Set goals that minimize impacts to water users and infrastructure



Expand monitoring programs



Conduct meaningful engagement with people who may be impacted

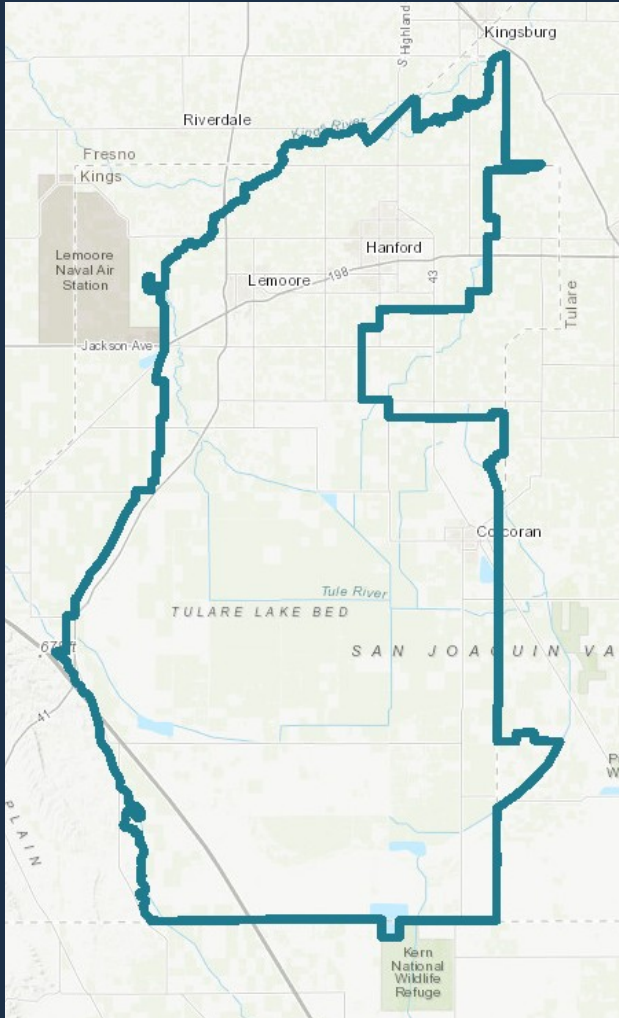


Develop & fund well mitigation programs



Limit groundwater pumping

Staff Recommendations Cont.



- Exclude household domestic well users from reporting and fees
- Require other pumpers to report by December of each year
- Require meters for those pumping more than 500 acre-feet a year
- Do not exclude any portion of the basin from probationary status

Tulare Lake Schedule

2023-2024

Oct. 12, 2023



**Release draft
staff report**
Notice to cities
counties

Oct. 13, 2023



**Notice to all
known
pumpers**

**Oct. 12 –
Dec. 11, 2023**



**Public
comment
period**

**Nov. 3 & 8,
2023**



**Stakeholder
meetings**

March 2024



**Release final
staff report**
Issue draft
resolution

Apr. 16, 2024



Hearing
Potential
probationary
designation

State Water Resources Control Board SGMA Program



SGMA@waterboards.ca.gov

www.waterboards.ca.gov/sgma

