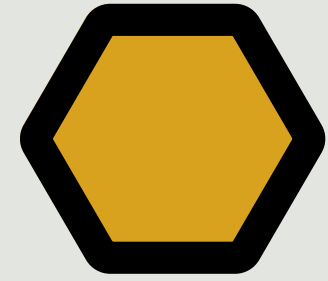


2023/24 ECWS PLAN

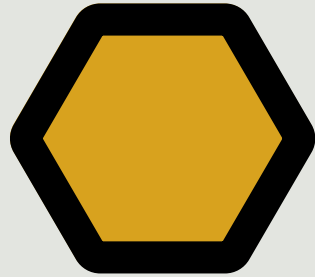
Anchorage Health
Department



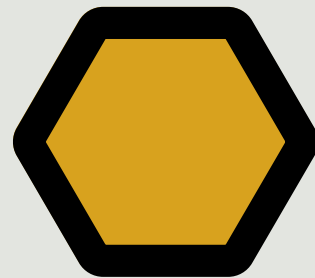
AGENDA



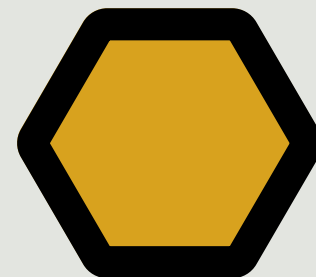
NON CONGREGATE ITB



CONGREGATE EXPLORATION



FUNDING EXPLAINED



DEMOBING OF CAMPS



ITB CURRENTLY OUT FOR NON CONGREGATE & CONGREGATE FACILITY

ITB has not closed. Posted Friday, Sept 15th for 14 days.

RFI Closed= 302 non congregate beds available.

Assumptions after initial discussions: 272 Beds @ Location 1, 100 Beds at Location 2, up to 150 Beds @ Location 3.

Total: 522

Facilities can still apply on purchasing website.



Strategic Planning

The Closing of Camps

Currently AHD Outreach is working with providers to figure out which campers are planning to seek emergency cold weather.

We plan to work with outreach workers and ACEH to conduct surveys and find the facility that would best suit individualized client needs.

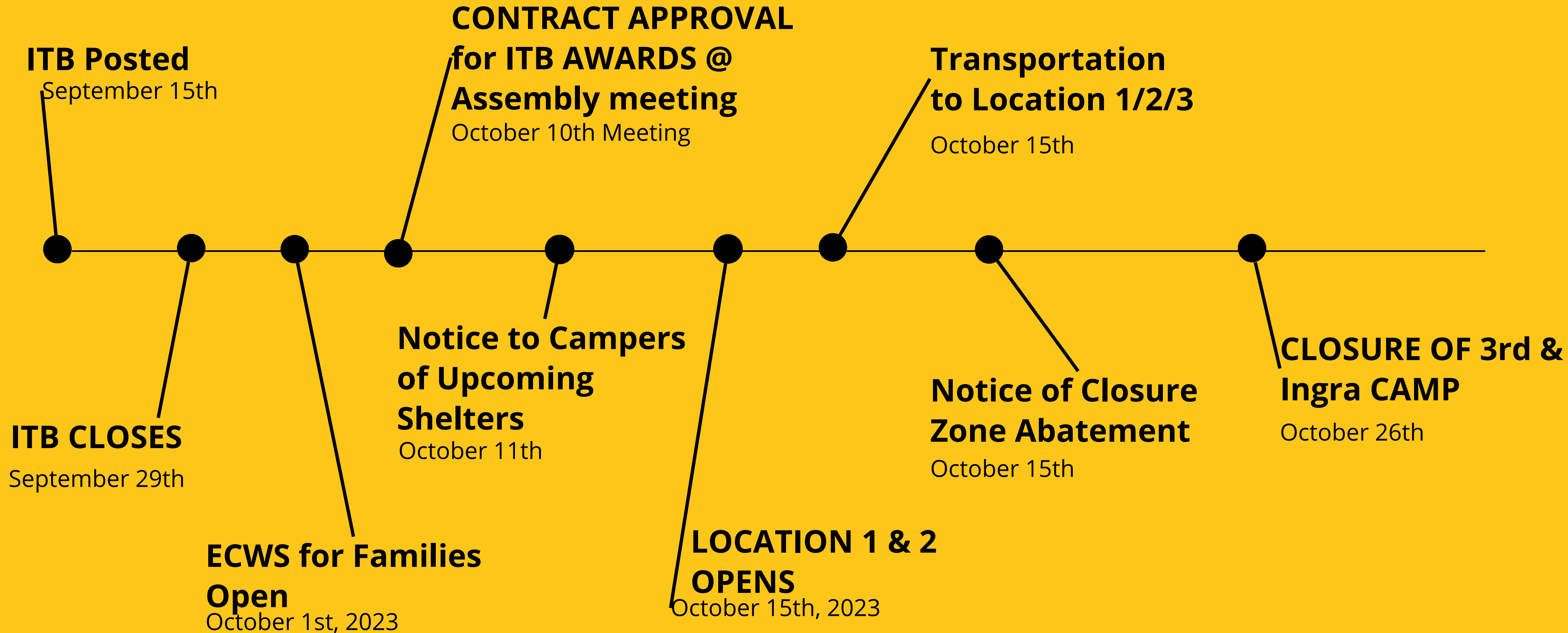
There will be proper notice given to all campers at 4 main sites that shelter will be opening mid month and to get registered in the system.

Our priority is to work with clients at 3rd/Ingra encampment, Chanshtnu, Cuddy, and Davis.

It is our goal to get 3rd & Ingra posted and closed and to move all clients into shelter or housing.

Timeline*

****In a perfect world**



FUNDING APPROPRIATED

- **ARPA**
\$2,126,639.93
- **ATAX**
\$957,137.63





EXPLORATION OF SWS ADMIN

- **Available**

Facility is undergoing fire inspection, but we do believe this facility will be available and utilized for ECWS pending public meeting and no health/life/safety disqualifiers..

- **Meets the Need**

Facility would be a walk up, low barrier shelter with Navigation Services on site. This would be a facility that would navigate/refer people to non congregate sites.



Zoning



Waived in Title 16 Dec

Sq Feet



Condition



ADA



1st floor

School



Playground



Transportation



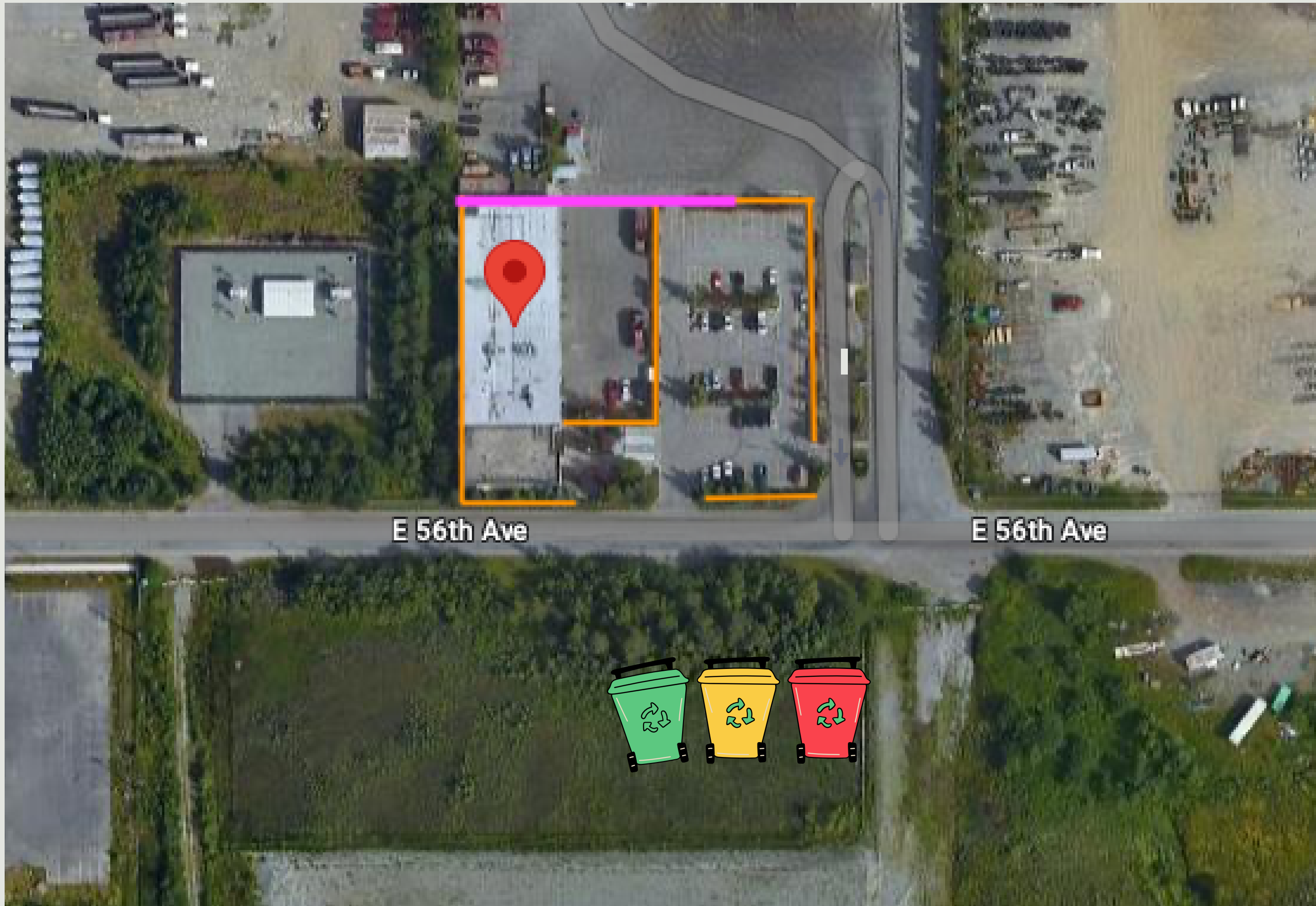
Visibility



Residential



CLEAN SLATE STRATEGY



E 56th Ave

E 56th Ave

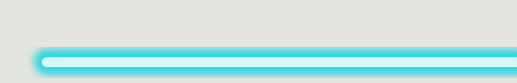
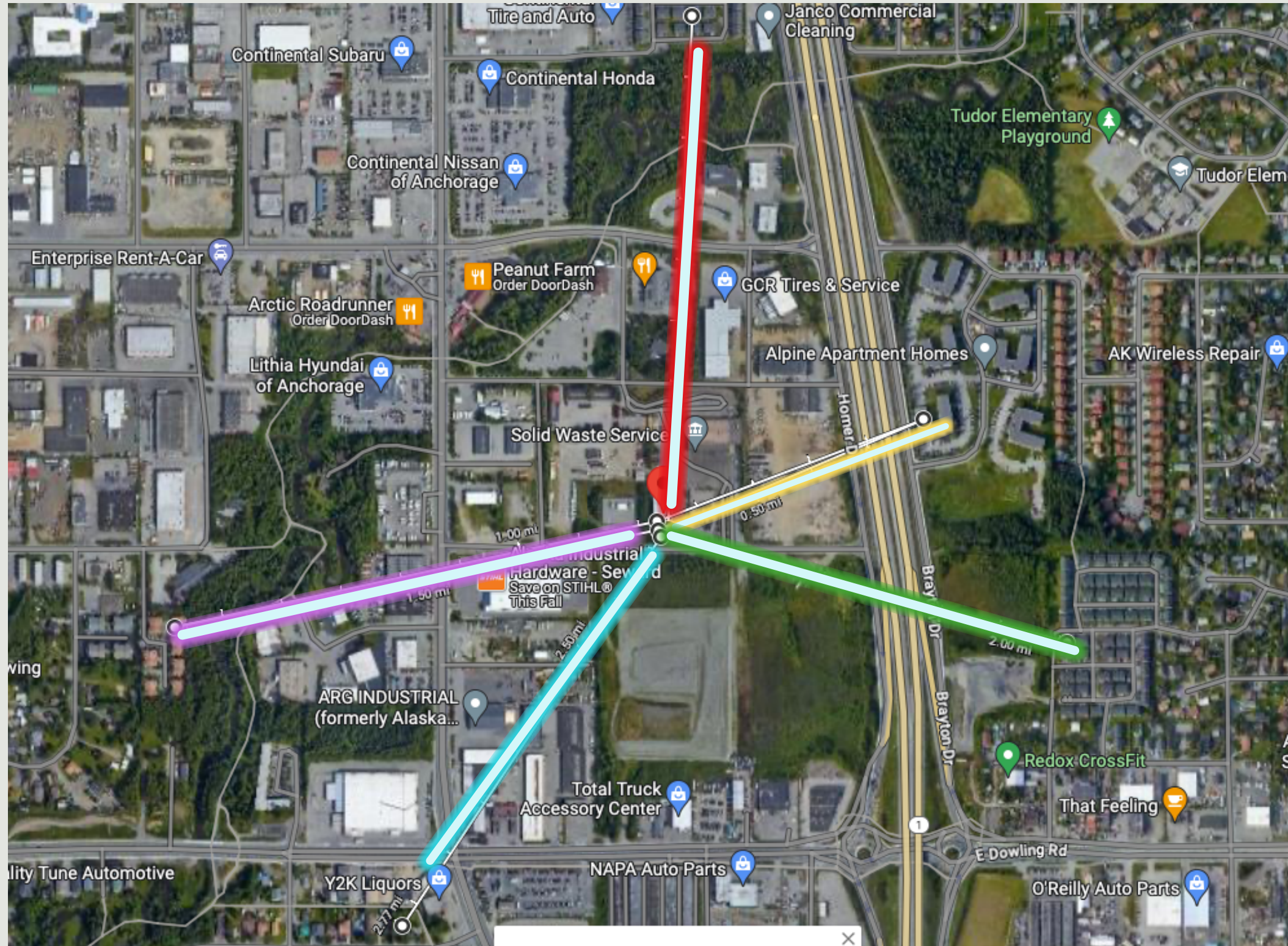


 Existing Fence

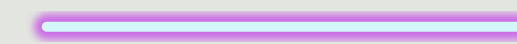
 Adding Fence


New SWS Facility

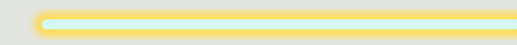
Residential



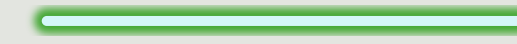
2127 ft



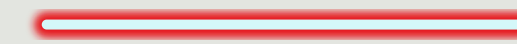
2132 ft~



1243 ft*



1803 ft*



2199 ft

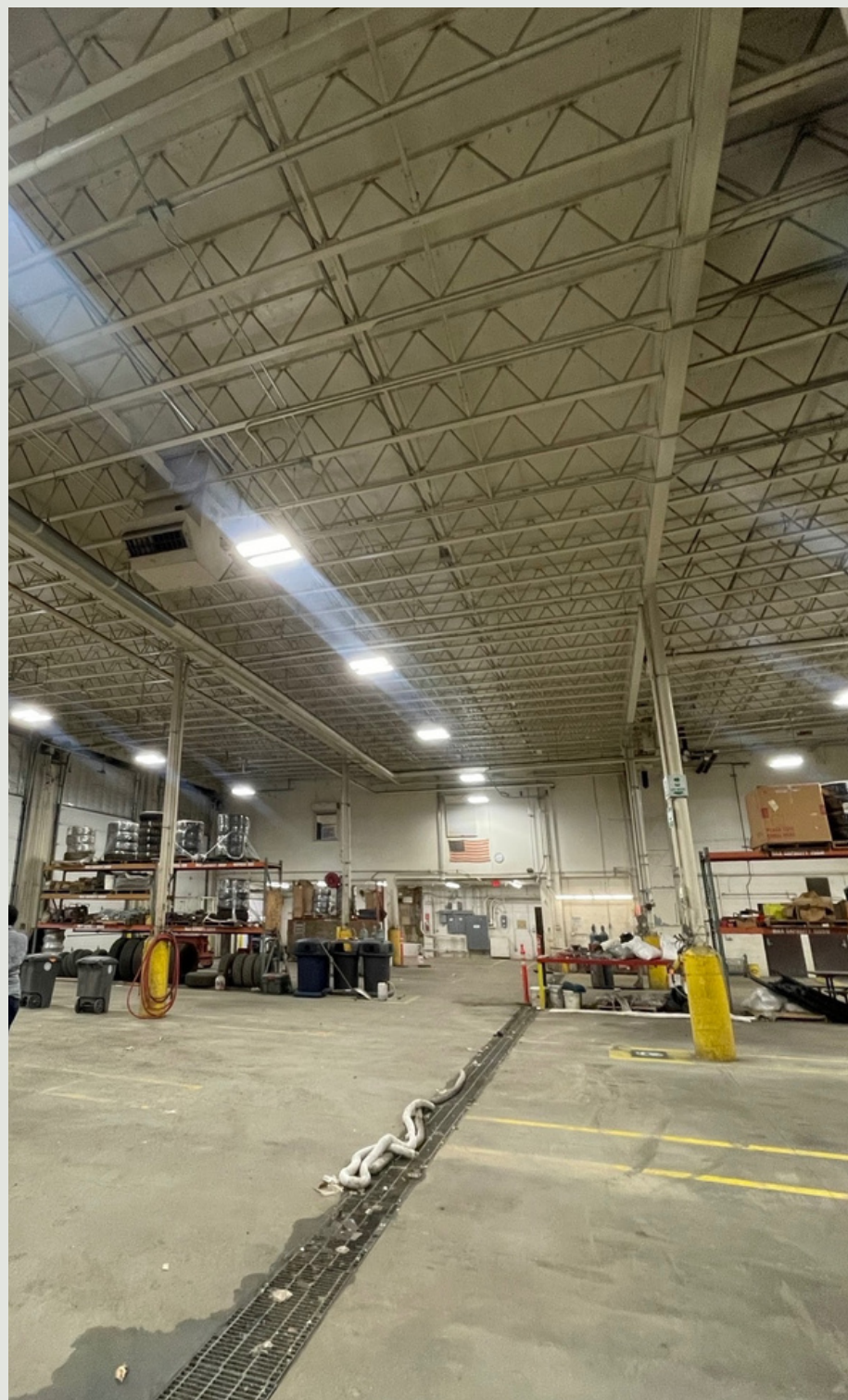
***Separated by the New Seward Highway**
~ Separated by Campbell Creek

Nearest Bus Stop

1,030 Feet

Old Seward & 56th

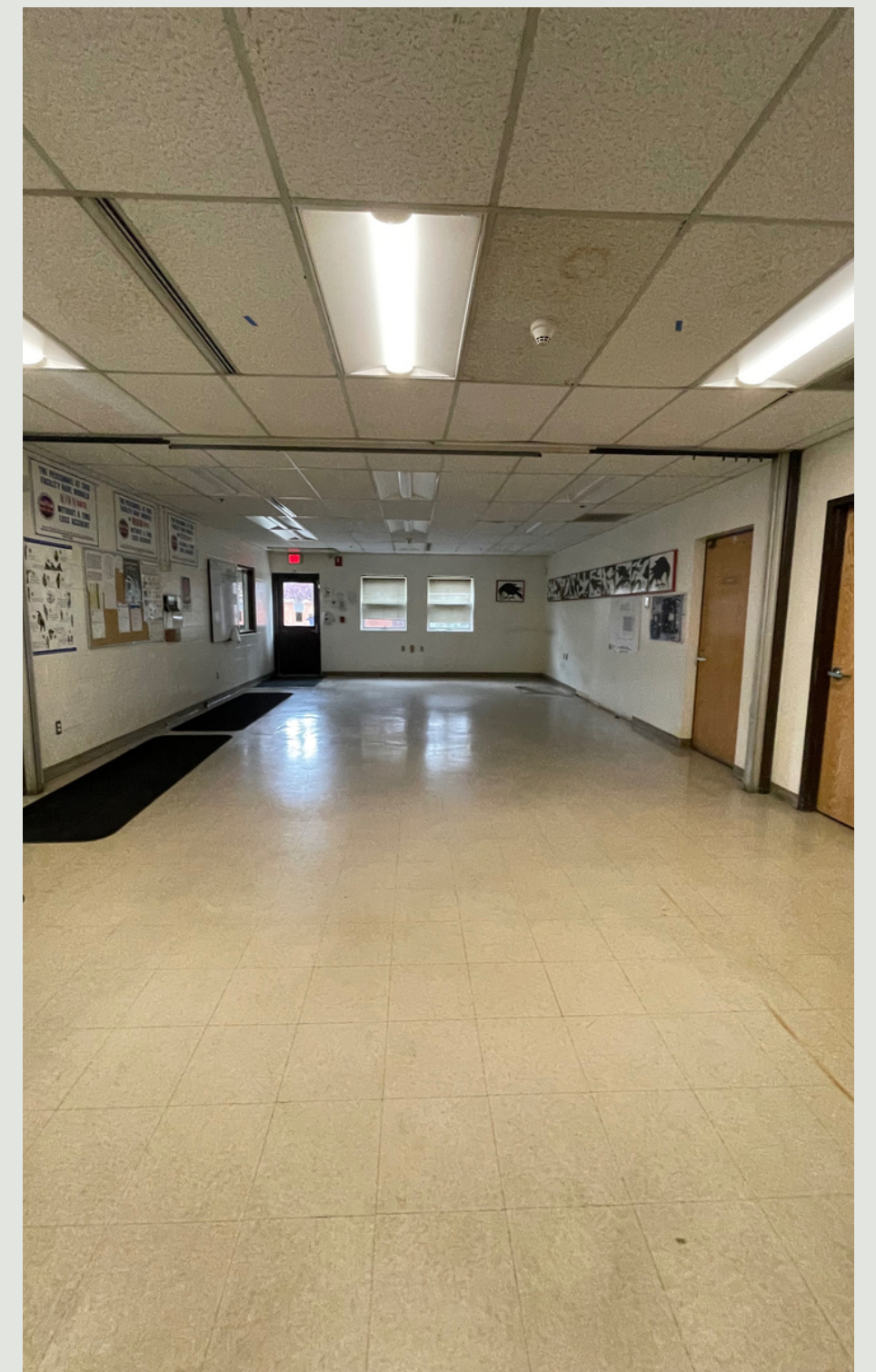




Large Bays will be utilized for shelter beds and 2 tote storage.



Private offices will be used for intake and navigation



Large spaces for dining and food service.



Front entry is safe and secure and not conducive for loitering or predatory behavior.



Large fenced-in outdoor space for outdoor activities, pet space and small smoking section.



Locker Room space available.



Men & Women's Bathrooms are fully functional, 3 showers on site.



2 small kitchens in the building to allow for warming of personal food. This will not be utilized for daily service.



Large indoor spaces for tv room, & day engagement center

CONTACT



Alexis Johnson



907-343-9841



alexis.d.johnson@anchorageak.gov

