

**INDIAN RIVER COUNTY, FLORIDA  
MEMORANDUM**

---

**TO:** Board of County Commissioners  
**THROUGH:** John A. Titkanich, Jr., County Administrator  
**FROM:** Richard B. Szpyrka, P.E., Public Works Director  
**SUBJECT:** CR-510 FDOT Widening Concept – Possible Closure of Existing Old Dixie Railway Crossing  
**DATE:** August 7, 2023

---

**DESCRIPTION AND CONDITIONS**

The Florida Department of Transportation (FDOT) is currently undertaking a Project Development and Environmental (PD&E) study for CR-510 from 58<sup>th</sup> Avenue to east of US-1. The PD&E study is for the continuation of widening CR-510 from two lanes to a four-lane divided roadway.

As part of the PD&E study, FDOT has met with Florida East Coast RR (FEC) regarding the widening of CR-510 at the FEC crossing. It is FEC policy that if an entity wants to perform a roadway widening project at an existing crossing, the additional lanes that are being added must be compensated for by the closing of an existing crossing(s) in the general area.

FDOT has provided the attached concept plan for the widening project. The concept is a flyover (bridge) over both the FEC railway and US-1, with at grade crossings of the FEC railway for westbound traffic flow from US-1.

FDOT has asked the County to consider closing the existing FEC railway crossing on Old Dixie Highway to accommodate the widening project for CR-510. Old Dixie Highway south of the FEC railway crossing is an 8 to 10-foot wide asphalt roadway in poor condition with variable right-of-way widths. North of the FEC railway crossing, the first 2,500 feet of pavement is 12 to 14 feet wide with variable right-of-way. From that point north to CR-512, the pavement is approximately 18 to 20 feet wide and in good condition.

**FUNDING**

At this time, no funding is necessary for this item.

**RECOMMENDATION**

Staff is requesting direction from the Board on the possibility of closing the FEC railway crossing on Old Dixie Highway to accommodate the widening project for CR-510.

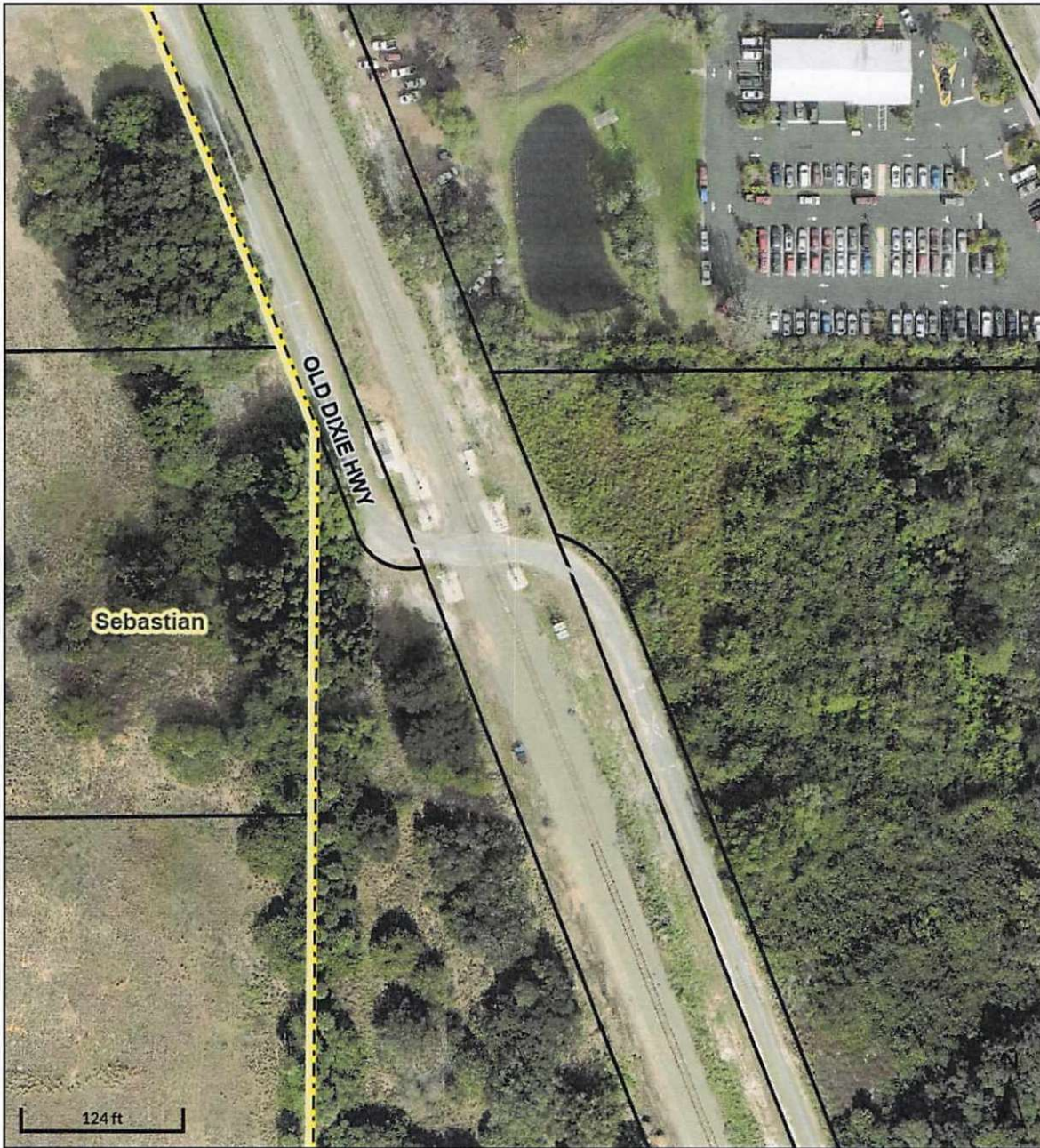
**ATTACHMENTS**

Old Dixie FEC Railway Crossing Map  
Old Dixie FEC Railway Crossing Sebastian  
CR 510 Alternative 3

**AGENDA ITEM FOR August 15, 2023**



# Indian River County, FL



## Overview



## Legend

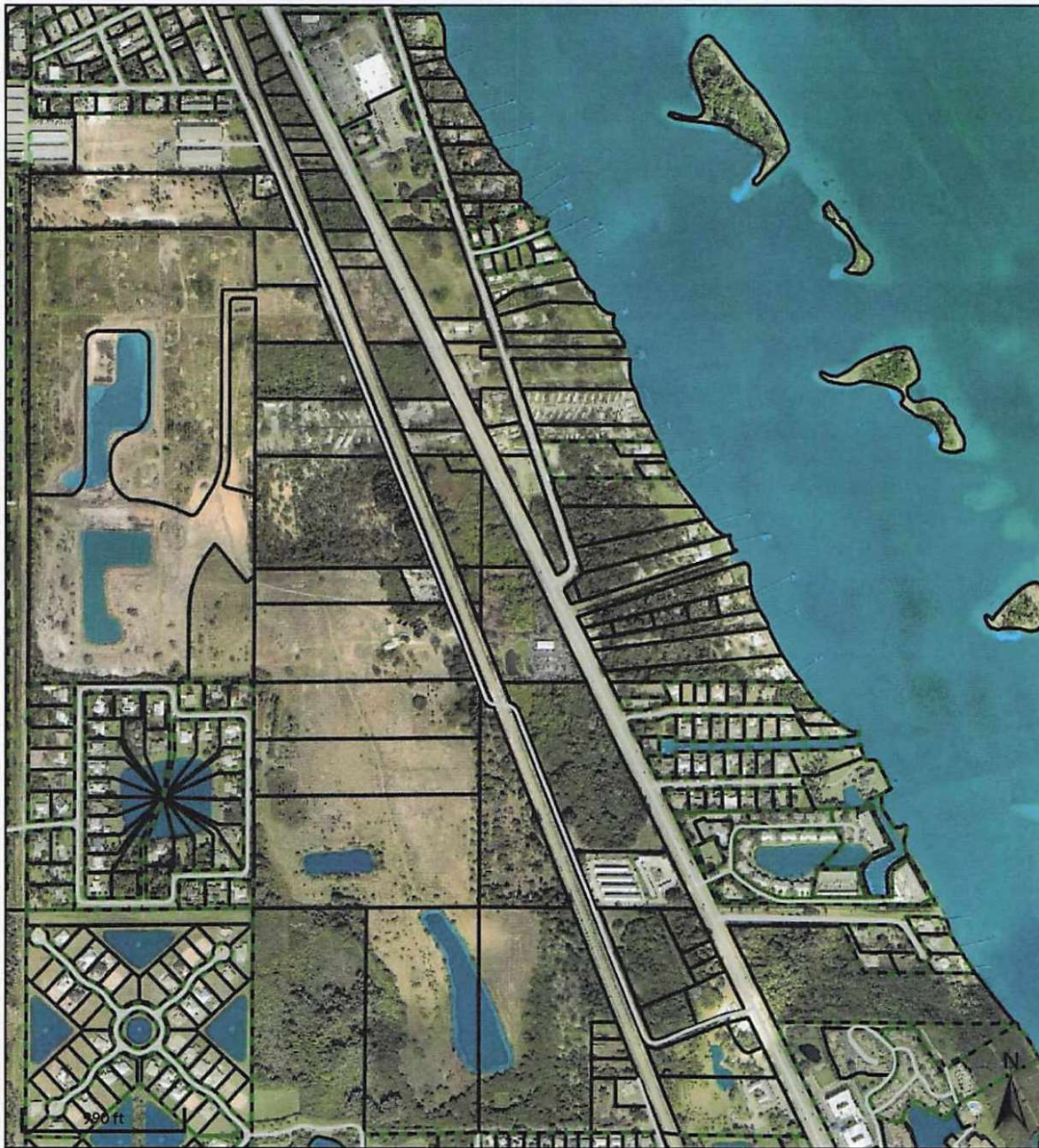
- Parcels
- Street Centerlines
- Municipal Boundaries 2
- IRC\_Private\_Schools
- Government Facilities**
- FEDERAL GOVERNMENT
- COUNTY GOVERNMENT
- LOCAL GOVERNMENT
- SCHOOL
- HOSPITAL
- FIRE STATION
- LAW ENFORCEMENT
- STATE PARK
- COUNTY PARK
- CITY PARK
- BOAT RAMP
- CANOE LAUNCH
- CANOE LANDING
- Golf Courses**
- Water

Date created: 8/7/2023  
 Last Data Uploaded: 8/7/2023 9:05:23 AM

Developed by Schneider  
 GEOSPATIAL



# Indian River County, FL



## Overview



## Legend

- Parcels
- Street Centerlines
- Subdivisions
- Municipal Boundaries 2
- IRC\_Private\_Schools
- Government Facilities**
- FEDERAL GOVERNMENT
- COUNTY GOVERNMENT
- LOCAL GOVERNMENT
- SCHOOL
- HOSPITAL
- FIRE STATION
- LAW ENFORCEMENT
- STATE PARK
- COUNTY PARK
- CITY PARK
- BOAT RAMP
- CANOE LAUNCH
- CANOE LANDING
- Golf Courses**
- Water

Date created: 8/8/2023  
 Last Data Uploaded: 8/8/2023 8:04:18 AM

Developed by Schneider  
 GEOSPATIAL

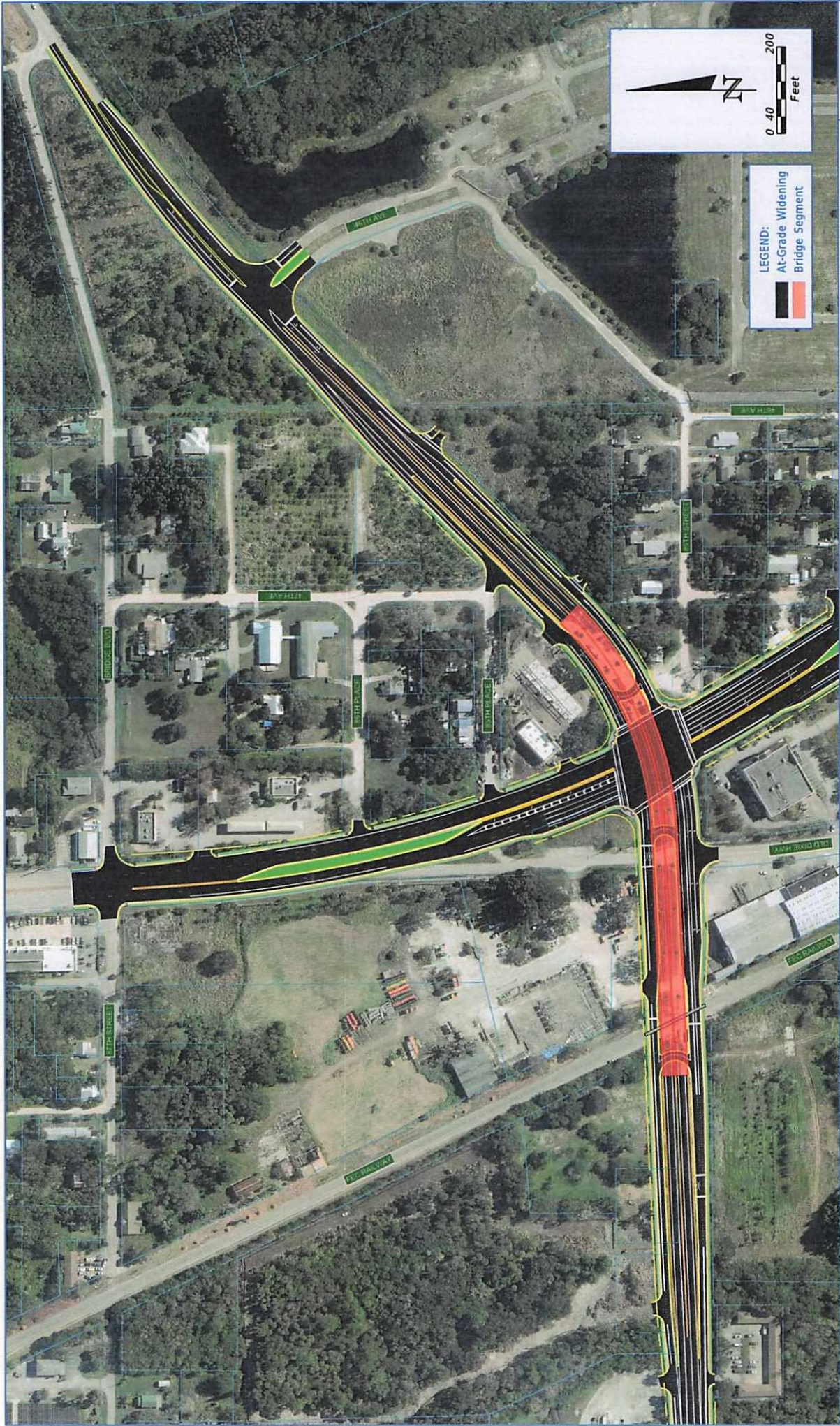


Figure: 1

**PRELIMINARY PROPOSED IMPROVEMENTS - ALTERNATIVE 3**

Title:

CR 510 PD&E Study  
 From 58th Avenue to east of SR 5 / US 1  
 FPID No.: 441692-1-22-02  
 ETDM No.: 14492



Florida Department of Transportation  
 District Four  
 3400 West Commercial Boulevard  
 Fort Lauderdale, FL 33309

