

Sustainable Groundwater Management Act (SGMA) Update: Groundwater Sustainability Plan Determinations

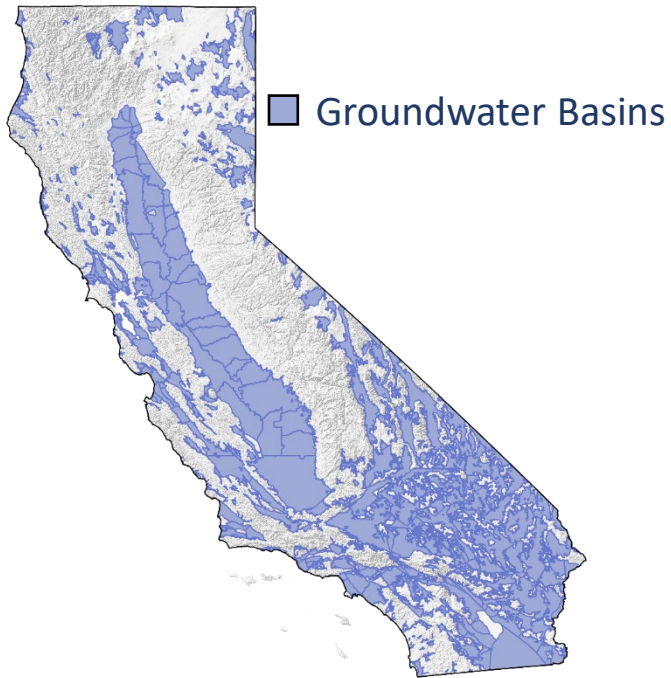
March 2023



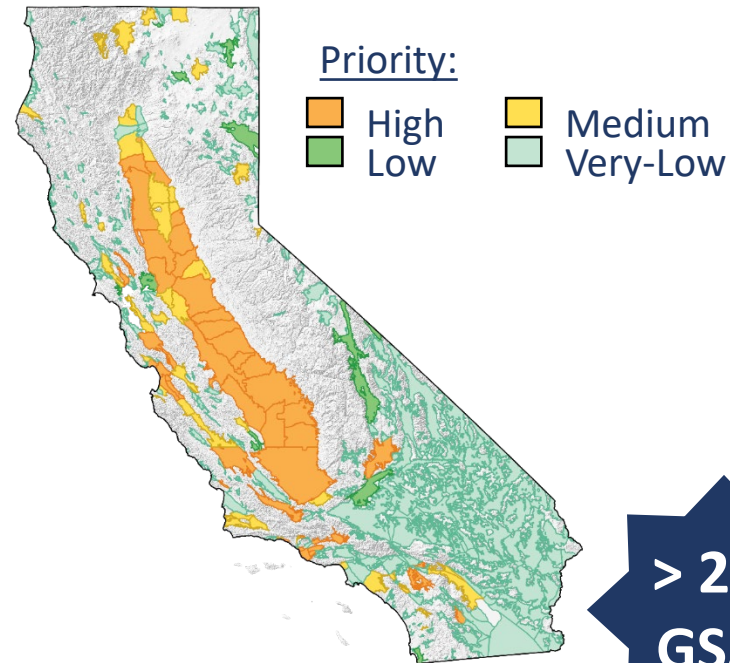
CALIFORNIA DEPARTMENT OF WATER RESOURCES
SUSTAINABLE GROUNDWATER
MANAGEMENT OFFICE

Where Does SGMA Apply?

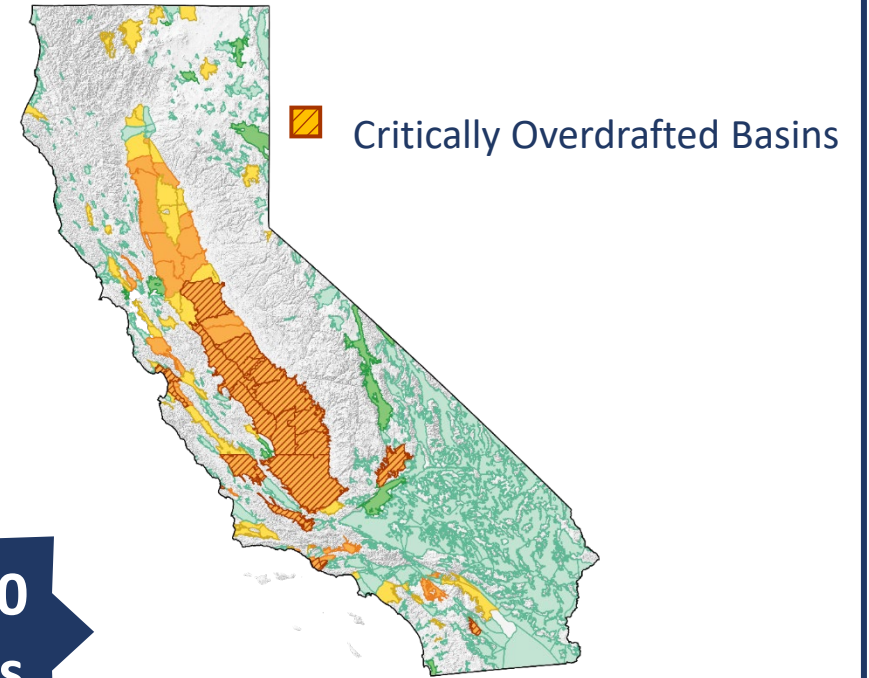
515 Basins



94 High and Medium Priority Basins



21 out of the 94 Critically Overdrafted Basins




**> 250
GSAs**

Formed by June 30, 2017

GSP & Alternatives Evaluation Submittals

- Critically Overdrafted (COD) Basins
 - **21 basins submitted 46 GSPs** by January 31, 2020
 - 12 of the 21 basins were deemed Incomplete by DWR in January 2022 and resubmitted their GSPs in July 2022
- High and Medium Priority Basins (Non-COD)
 - **63 basins submitted 65 GSPs** by January 31, 2022
 - DWR Approved 4 basins January 2023
- Alternatives to GSPs
 - Alternatives were initially submitted by January 1, 2017
 - DWR **Approved 9 Alternatives** in 2019
 - Basins submitted 9 Alternatives for Periodic Evaluation by January 1, 2022 (the five-year plan update)

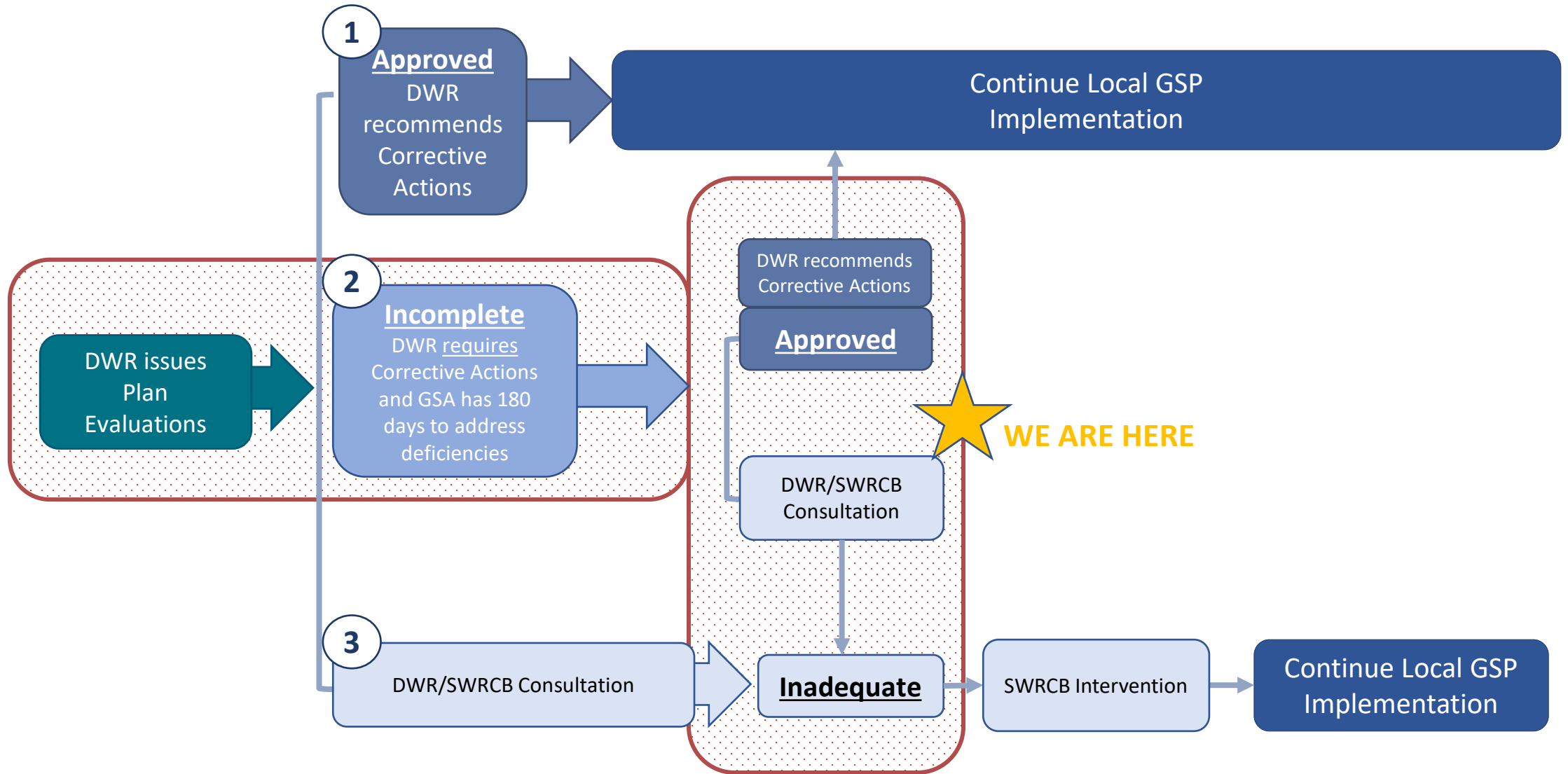


The screenshot shows the SGMA Portal website. The header includes the California State Government logo and the text "Department of Water Resources SGMA PORTAL". A navigation menu contains links for Home, GSA, GSP, Alternatives, Adjudicated Areas, Basin Modification, and Resources. A "Sign In" button is in the top right. The main content area features a landscape image with the text "SUBMIT AND VIEW SGMA INFORMATION AND DATA" and six circular icons: GSA Formation, GSP Submittal, Alternative Submittal, Adjudicated Areas, Basin Modification, and SGMA Portal Resources.

Please visit the SGMA Portal to find submitted Plans, Public Comments, and DWR Assessments:

<https://sgma.water.ca.gov/portal/>

SGMA Regulatory Pathways



Critically Overdrafted Subbasin Decisions

6 APPROVALS:

- Eastern San Joaquin Subbasin
- Merced Subbasin
- Westside Subbasin
- Paso Robles Subbasin
- Cuyama Subbasin
- Kings Subbasin*

*Multi-GSP Subbasin

6 INADEQUATE:

- Chowchilla Subbasin
- Tulare Lake Subbasin
- Delta Mendota Subbasin*
- Kaweah Subbasin*
- Tule Subbasin*
- Kern Subbasin*



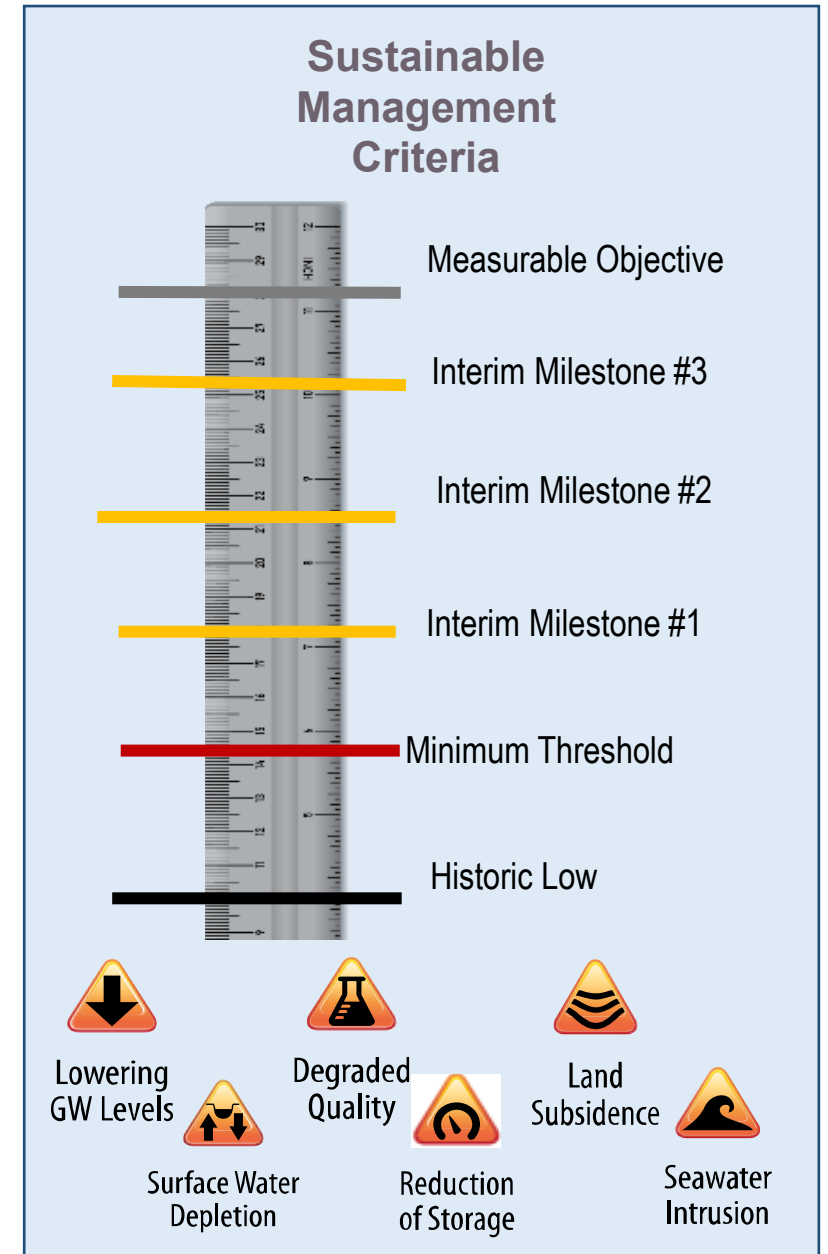
Determination Themes

- **Sufficient Action to Address the Deficiencies** identified in the Incomplete Determinations
- Analysis and justification of how **Sustainable Management Criteria** were developed
 - **Eliminate groundwater overdraft** within 20 years
 - **Avoid or minimize land subsidence effects** within 20 years
- Consider all **Beneficial Groundwater Users and Uses**, including drinking water users and known critical infrastructure
- For **multi-plan Basins**, coordinate and have **Consistencies in the Data and Methodologies** among plans

RECOMMENDED APPROVALS

Sufficient Action Taken to Address Deficiencies (General):

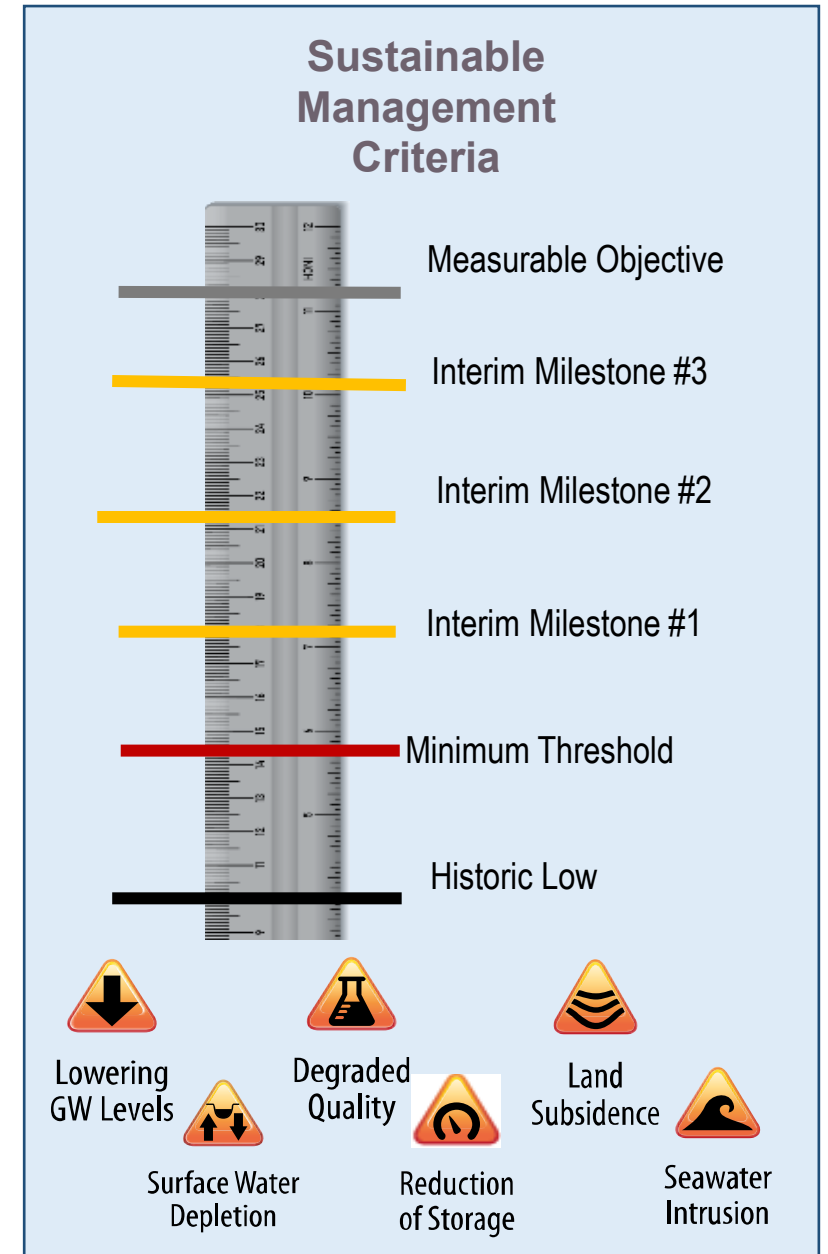
- **Groundwater Levels:** Conducted analysis to show effects on beneficial users, modified management criteria based on analysis of water levels, and proposed or developed detailed framework for well mitigation program
- **Land Subsidence:** Modified management criteria (minimum thresholds) related to subsidence rates/extent, identified critical infrastructure, and coordinating with key interested parties
- **Water Quality:** Collected additional data, coordinated with the Regional Boards, re-established management criteria consistent with state drinking water standards
- **Interconnected Surface Water (ISW):** Asking GSAs to continue to fill data gaps, collect additional monitoring data, and manage depletions of ISW and define segments of interconnectivity and timing



INADEQUATE BASINS

Did Not Take Sufficient Action to Address Deficiencies (General):

- **Groundwater Levels:** did not conduct sufficient analysis to show effects on beneficial users, lowered management criteria of water levels, and did not propose or develop a detailed framework for well mitigation program
- **Land Subsidence:** Did not modify management criteria (minimum thresholds) related to subsidence rates/extent, significant subsidence anticipated beyond 2040, did not identify critical infrastructure or coordinate with key interested parties
- **Water Quality:** Established management criteria and defined undesirable results in a way that would not be applicable for extended periods of time



Next Steps:

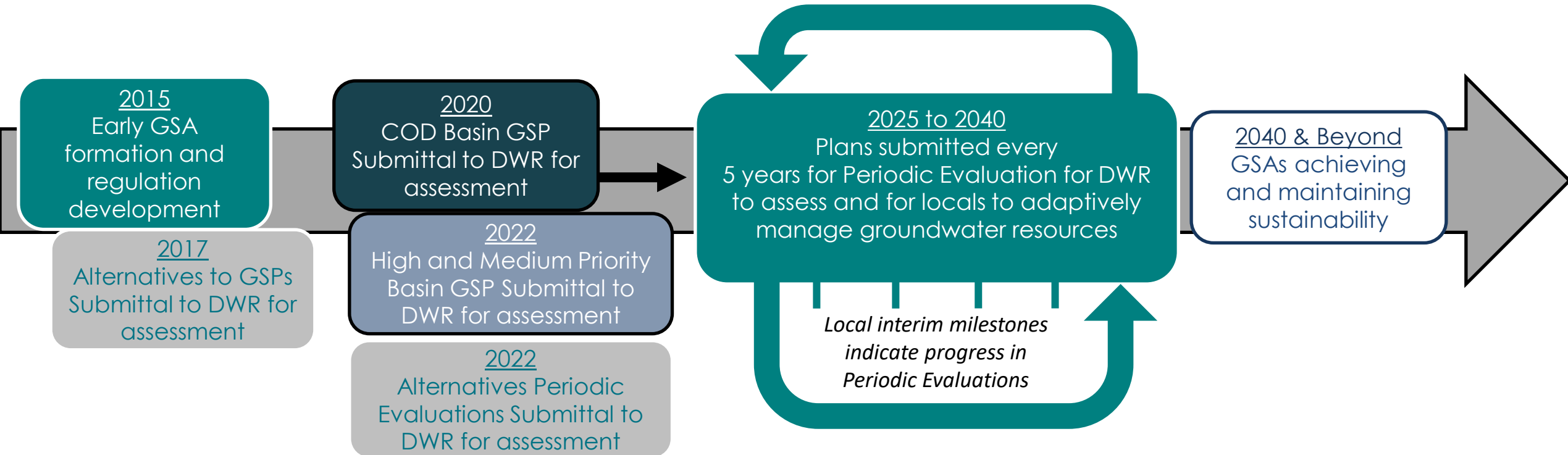
Continue Plan Implementation

- **Addressing Groundwater Sustainability Plan Corrective Actions**
 - Prepare for Periodic Evaluation (next plan update)
 - Respond to State Water Board, if under Intervention
- **Filling Data Gaps & Improvements**
 - Continue modeling, monitoring, and water budgets
 - Continue Submitting Annual Reports to DWR (April 1)
- **Building Local Agency Capacity**
 - Continue implementing grant funding
 - Secure local funding stability & address challenges
- **Advancing Projects and Management Actions**
 - Supply augmentation including groundwater recharge
 - Demand reduction including allocations and groundwater trading



Ribbon cutting ceremony held by the Fresno Irrigation District for the Savory Pond Expansion project funded by DWR in Fresno, California

SGMA Implementation: 20-Year Timeline



State Intervention Timeline

If Board determines state intervention is warranted

DWR Determination

Inadequate?

Not likely to achieve sustainability

Board Consideration

Board receipt and evaluation of DWR determination

Noticing

Public notice of hearing and contact cities and counties

At least 90 days in advance of hearing*

Board Probationary Hearing

Board decides whether probation is warranted

If Basin Designated Probationary

Board collects data and fees; local agencies work to fix plan

If Deficiencies are Not Cured

Board consideration of developing and adopting an interim plan

After at least 1 year*

Board - DWR coordination

*Statutory minimum. Board has discretion.

Questions?

Program Contact: SGMPS@water.ca.gov

Groundwater Media Inquiries: media@water.ca.gov



CALIFORNIA DEPARTMENT OF WATER RESOURCES
SUSTAINABLE GROUNDWATER
MANAGEMENT OFFICE