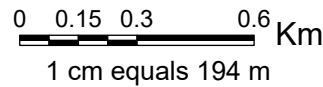


**LEGEND**



- Greenbelt Area\*
- Protected Countryside
- Natural Heritage System
- Towns/Villages
- Urban River Valleys
- Settlement Areas Outside the Greenbelt
- Municipal Boundary
- Road or Highway

- Proposed Modifications
- Greenbelt Redesignation
  - Greenbelt Removal
  - ORM Redesignation



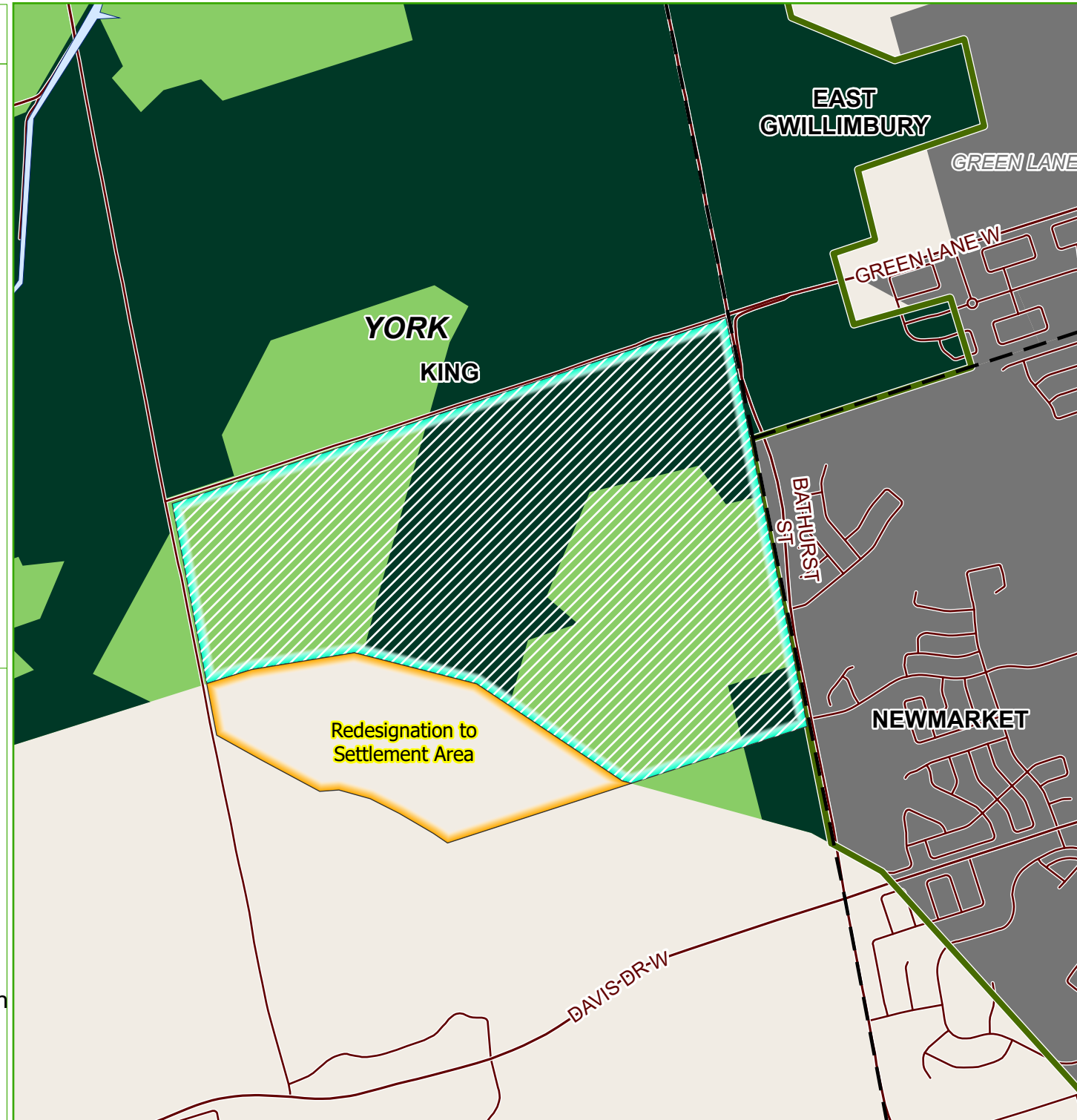
Map North: 0°

Note: While every effort has been made to accurately depict the information, this map should not be relied on as being a precise indicator of locations of features or roads. For precise boundaries and locations of Settlement Areas, including Towns/Villages and Hamlets, the appropriate municipalities should be consulted.

Produced by and using data sources from the: Ministry of Municipal Affairs and Housing; Ministry of Northern Development, Mines, Natural Resources and Forestry; Ministry of the Environment, Conservation and Parks; and, the Ministry of Agriculture, Food and Rural Affairs.





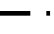

<https://www.ontario.ca/page/accessible-customer-service-policy>  
 We are committed to providing accessible customer service. On request, we can arrange for accessible formats and communications supports. Please contact MMAH by email ([mininfo@ontario.ca](mailto:mininfo@ontario.ca)) for regulation details.




\*Ontario Regulation 59/05, as amended. © 2022, King's Printer for Ontario

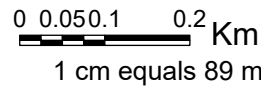


**LEGEND**



-  Greenbelt Area\*
-  Protected Countryside
-  Natural Heritage System
-  Towns/Villages
-  Urban River Valleys
-  Settlement Areas Outside the Greenbelt
-  Municipal Boundary
-  Road or Highway

- Proposed Modifications
-  Greenbelt Redesignation
  -  Greenbelt Removal
  -  ORM Redesignation



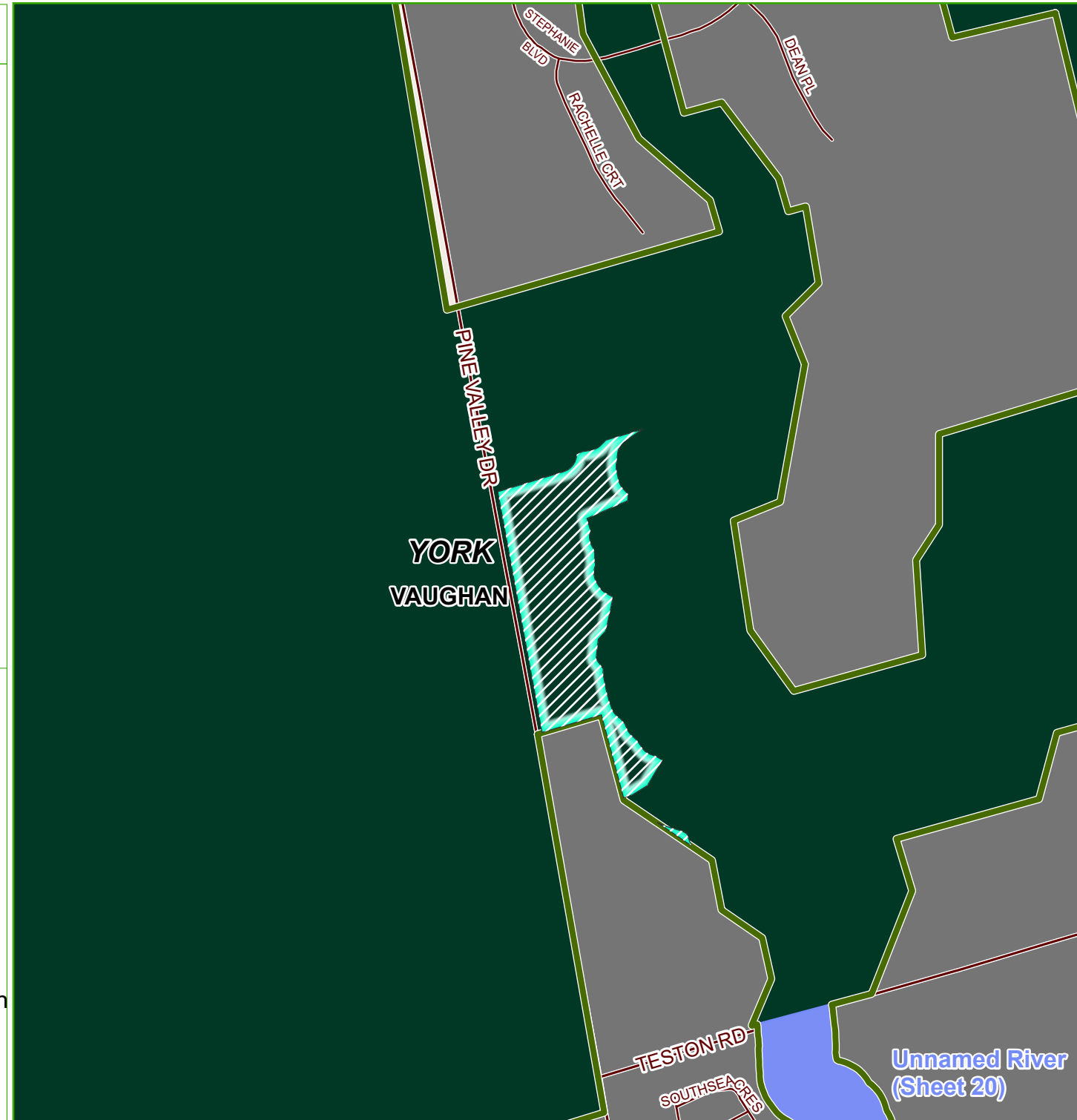
Map North: 0°

Note: While every effort has been made to accurately depict the information, this map should not be relied on as being a precise indicator of locations of features or roads. For precise boundaries and locations of Settlement Areas, including Towns/Villages and Hamlets, the appropriate municipalities should be consulted.

Produced by and using data sources from the: Ministry of Municipal Affairs and Housing; Ministry of Northern Development, Mines, Natural Resources and Forestry; Ministry of the Environment, Conservation and Parks; and, the Ministry of Agriculture, Food and Rural Affairs.

<https://www.ontario.ca/page/accessible-customer-service-policy>  
 We are committed to providing accessible customer service. On request, we can arrange for accessible formats and communications supports. Please contact MMAH by email ([mininfo@ontario.ca](mailto:mininfo@ontario.ca)) for regulation details.

\*Ontario Regulation 59/05, as amended. © 2022, King's Printer for Ontario

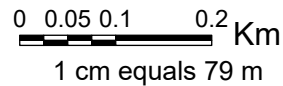


**LEGEND**



- Greenbelt Area\*
- Protected Countryside
- Natural Heritage System
- Towns/Villages
- Urban River Valleys
- Settlement Areas Outside the Greenbelt
- Municipal Boundary
- Road or Highway

- Proposed Modifications
- Greenbelt Redesignation
  - Greenbelt Removal
  - ORM Redesignation



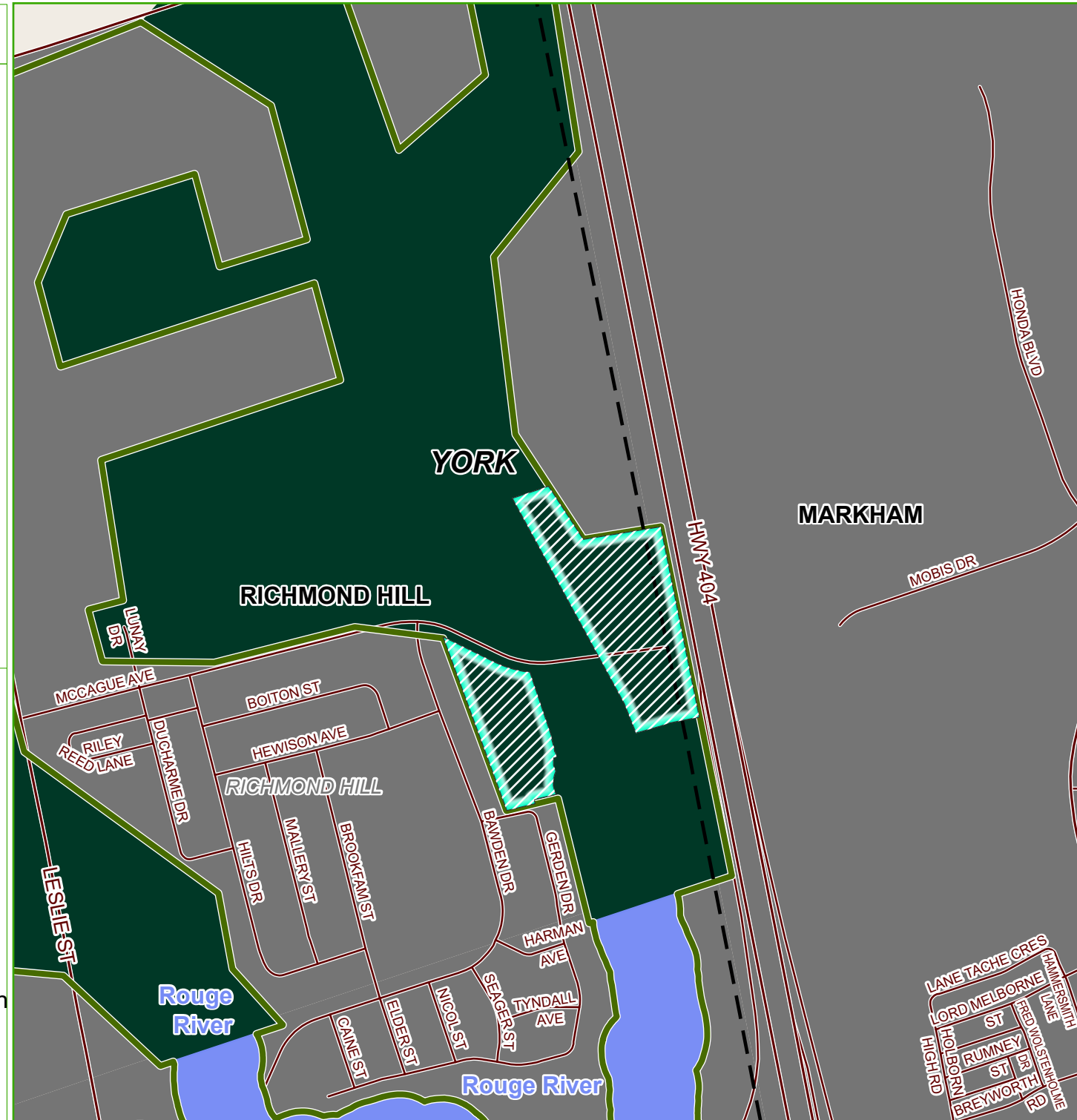
Map North: 0°

Note: While every effort has been made to accurately depict the information, this map should not be relied on as being a precise indicator of locations of features or roads. For precise boundaries and locations of Settlement Areas, including Towns/Villages and Hamlets, the appropriate municipalities should be consulted.

Produced by and using data sources from the: Ministry of Municipal Affairs and Housing; Ministry of Northern Development, Mines, Natural Resources and Forestry; Ministry of the Environment, Conservation and Parks; and, the Ministry of Agriculture, Food and Rural Affairs.

<https://www.ontario.ca/page/accessible-customer-service-policy>  
 We are committed to providing accessible customer service. On request, we can arrange for accessible formats and communications supports. Please contact MMAH by email ([mininfo@ontario.ca](mailto:mininfo@ontario.ca)) for regulation details.

\*Ontario Regulation 59/05, as amended. © 2022, King's Printer for Ontario

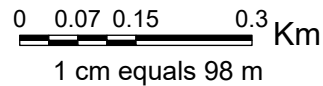


**LEGEND**



- Greenbelt Area\*
- Protected Countryside
- Natural Heritage System
- Towns/Villages
- Urban River Valleys
- Settlement Areas Outside the Greenbelt
- Municipal Boundary
- Road or Highway

- Proposed Modifications**
- Greenbelt Redesignation
  - Greenbelt Removal
  - ORM Redesignation

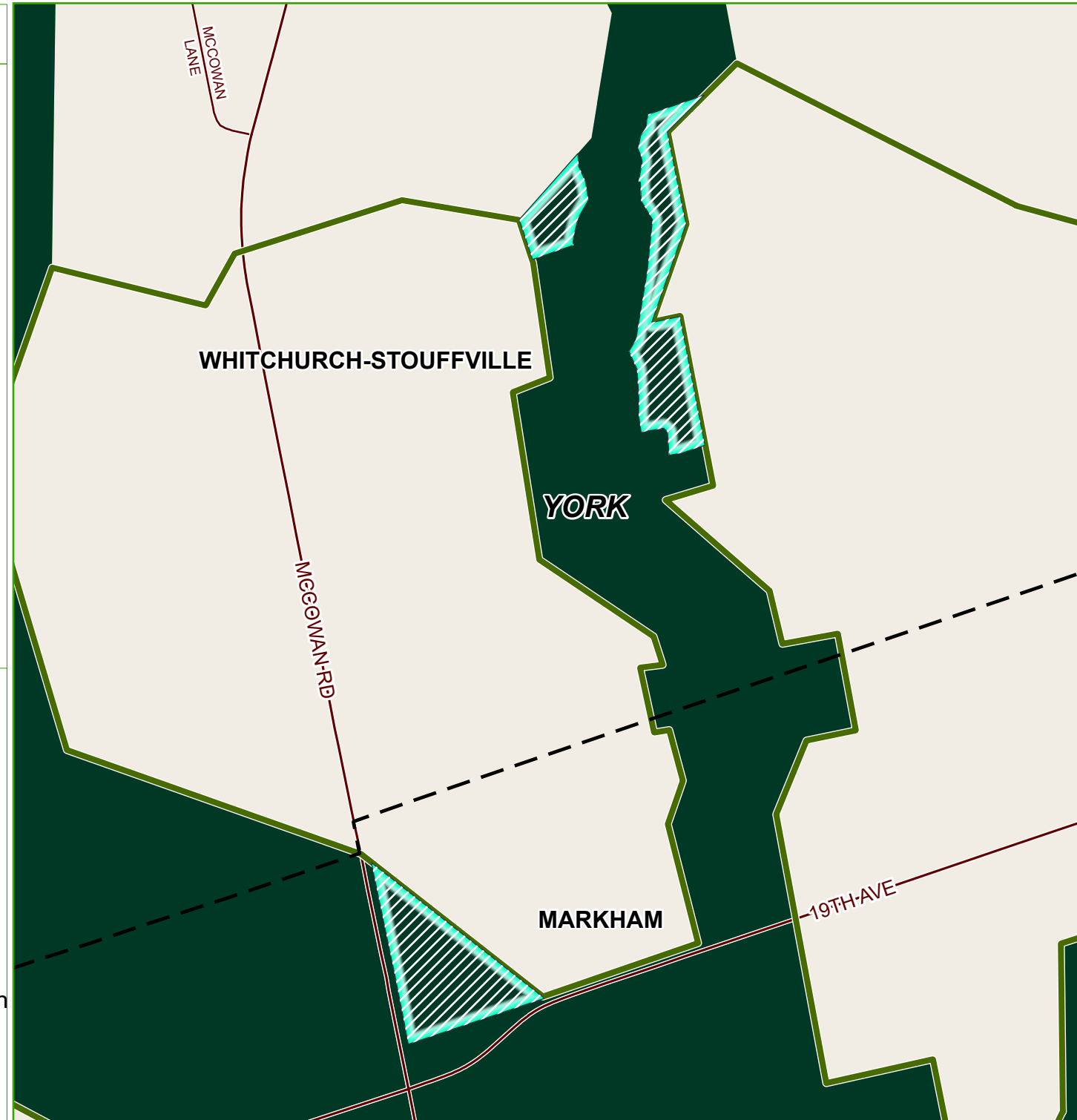


Note: While every effort has been made to accurately depict the information, this map should not be relied on as being a precise indicator of locations of features or roads. For precise boundaries and locations of Settlement Areas, including Towns/Villages and Hamlets, the appropriate municipalities should be consulted.

Produced by and using data sources from the: Ministry of Municipal Affairs and Housing; Ministry of Northern Development, Mines, Natural Resources and Forestry; Ministry of the Environment, Conservation and Parks; and, the Ministry of Agriculture, Food and Rural Affairs.

<https://www.ontario.ca/page/accessible-customer-service-policy>  
 We are committed to providing accessible customer service. On request, we can arrange for accessible formats and communications supports. Please contact MMAH by email ([mininfo@ontario.ca](mailto:mininfo@ontario.ca)) for regulation details.

\*Ontario Regulation 59/05, as amended. © 2022, King's Printer for Ontario



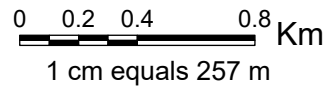


**LEGEND**



- Greenbelt Area\*
- Protected Countryside
- Natural Heritage System
- Towns/Villages
- Urban River Valleys
- Settlement Areas Outside the Greenbelt
- Municipal Boundary
- Road or Highway

- Proposed Modifications**
- Greenbelt Redesignation
  - Greenbelt Removal
  - ORM Redesignation



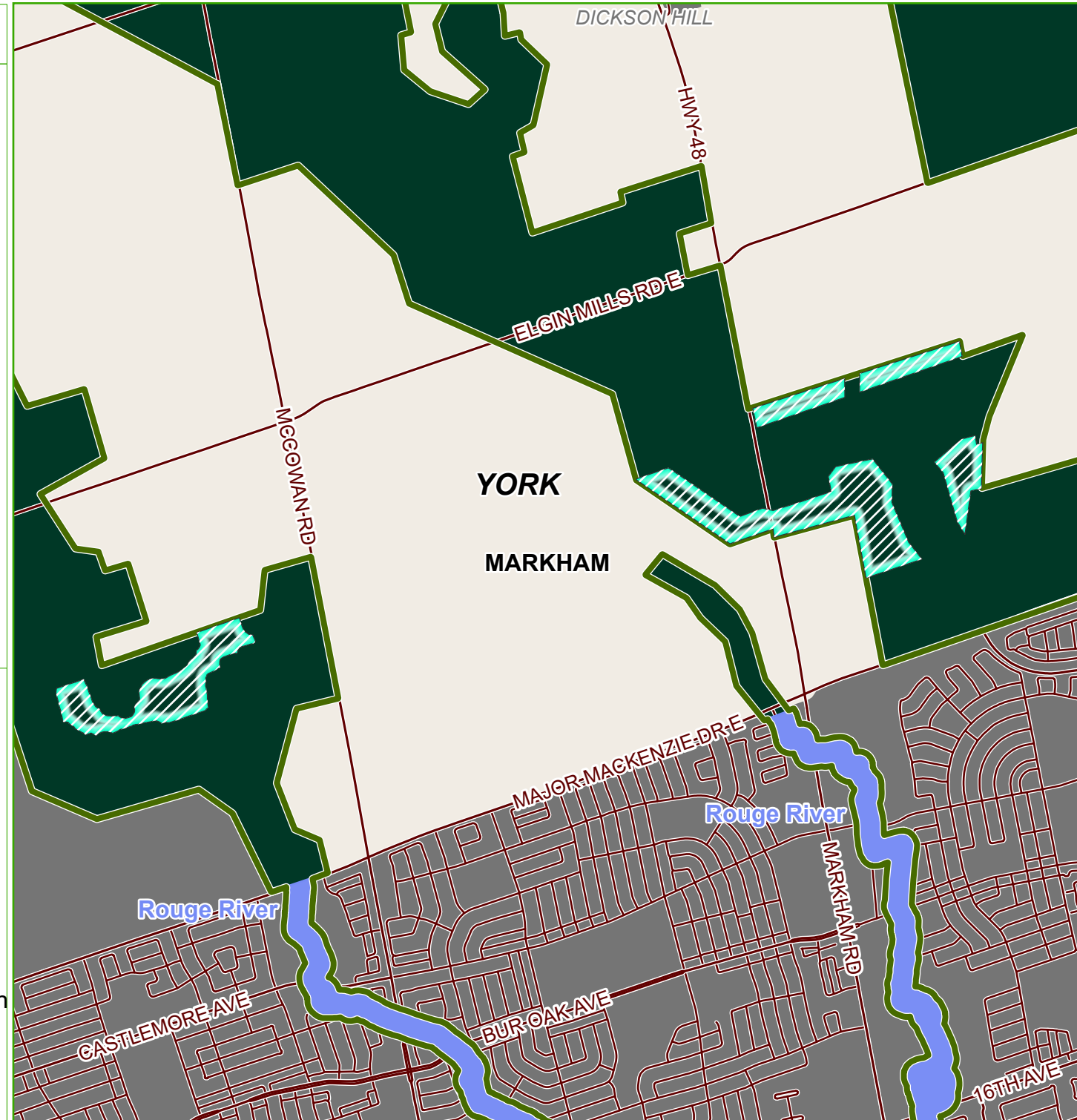
Map North: 0°

Note: While every effort has been made to accurately depict the information, this map should not be relied on as being a precise indicator of locations of features or roads. For precise boundaries and locations of Settlement Areas, including Towns/Villages and Hamlets, the appropriate municipalities should be consulted.

Produced by and using data sources from the: Ministry of Municipal Affairs and Housing; Ministry of Northern Development, Mines, Natural Resources and Forestry; Ministry of the Environment, Conservation and Parks; and, the Ministry of Agriculture, Food and Rural Affairs.







<https://www.ontario.ca/page/accessible-customer-service-policy>  
 We are committed to providing accessible customer service. On request, we can arrange for accessible formats and communications supports. Please contact MMAH by email ([mininfo@ontario.ca](mailto:mininfo@ontario.ca)) for regulation details.




\*Ontario Regulation 59/05, as amended. © 2022, King's Printer for Ontario

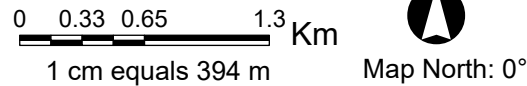


**LEGEND**

Ontario 

-  Greenbelt Area\*
-  Protected Countryside
-  Natural Heritage System
-  Towns/Villages
-  Urban River Valleys
-  Settlement Areas Outside the Greenbelt
-  Municipal Boundary
-  Road or Highway

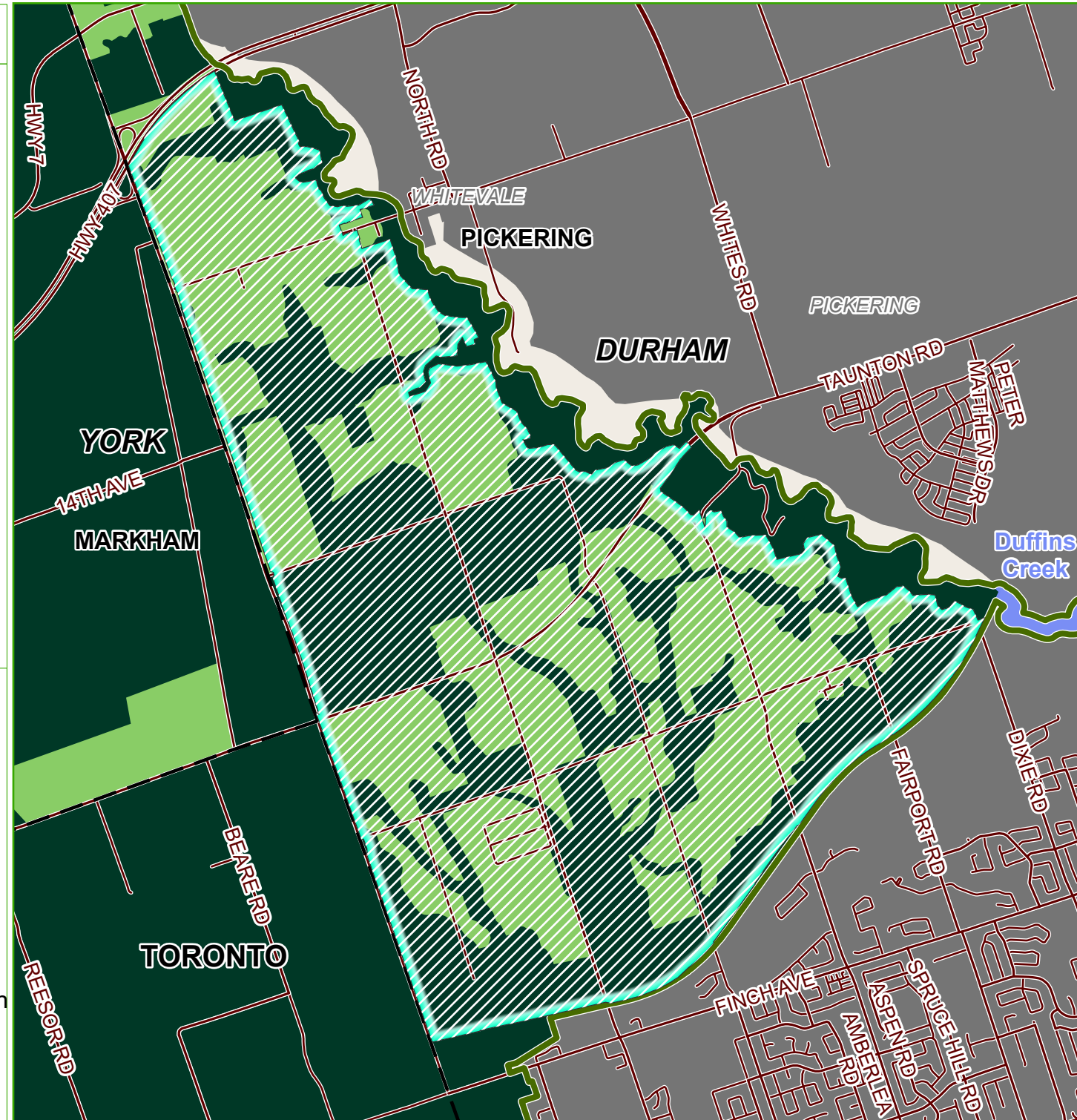
- Proposed Modifications
-  Greenbelt Redesignation
  -  Greenbelt Removal
  -  ORM Redesignation



Note: While every effort has been made to accurately depict the information, this map should not be relied on as being a precise indicator of locations of features or roads. For precise boundaries and locations of Settlement Areas, including Towns/Villages and Hamlets, the appropriate municipalities should be consulted.

Produced by and using data sources from the: Ministry of Municipal Affairs and Housing; Ministry of Northern Development, Mines, Natural Resources and Forestry; Ministry of the Environment, Conservation and Parks; and, the Ministry of Agriculture, Food and Rural Affairs.

<https://www.ontario.ca/page/accessible-customer-service-policy>  
 We are committed to providing accessible customer service. On request, we can arrange for accessible formats and communications supports. Please contact MMAH by email ([mininfo@ontario.ca](mailto:mininfo@ontario.ca)) for regulation details.

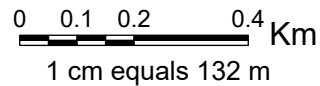


**LEGEND**



- Greenbelt Area\*
- Protected Countryside
- Natural Heritage System
- Towns/Villages
- Urban River Valleys
- Settlement Areas Outside the Greenbelt
- Municipal Boundary
- Road or Highway

- Proposed Modifications**
- Greenbelt Redesignation
  - Greenbelt Removal
  - ORM Redesignation

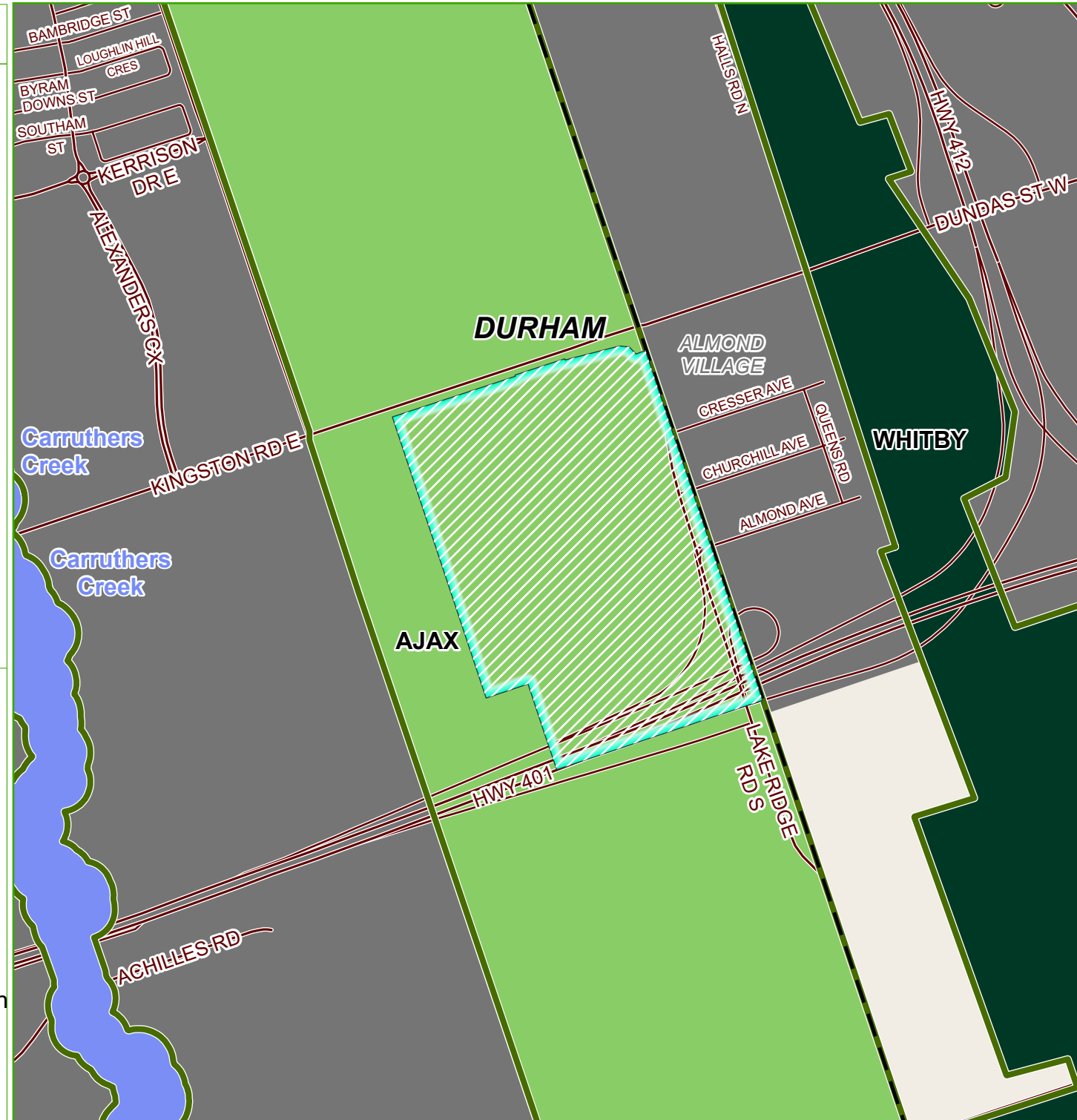


Note: While every effort has been made to accurately depict the information, this map should not be relied on as being a precise indicator of locations of features or roads. For precise boundaries and locations of Settlement Areas, including Towns/Villages and Hamlets, the appropriate municipalities should be consulted.

Produced by and using data sources from the: Ministry of Municipal Affairs and Housing; Ministry of Northern Development, Mines, Natural Resources and Forestry; Ministry of the Environment, Conservation and Parks; and, the Ministry of Agriculture, Food and Rural Affairs.

<https://www.ontario.ca/page/accessible-customer-service-policy>  
 We are committed to providing accessible customer service. On request, we can arrange for accessible formats and communications supports. Please contact MMAH by email ([mininfo@ontario.ca](mailto:mininfo@ontario.ca)) for regulation details.

\*Ontario Regulation 59/05, as amended. © 2022, King's Printer for Ontario



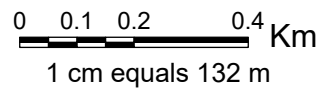


LEGEND



- Greenbelt Area\*
- Protected Countryside
- Natural Heritage System
- Towns/Villages
- Urban River Valleys
- Settlement Areas Outside the Greenbelt
- Municipal Boundary
- Road or Highway

- Proposed Modifications
- Greenbelt Redesignation
  - Greenbelt Removal
  - ORM Redesignation

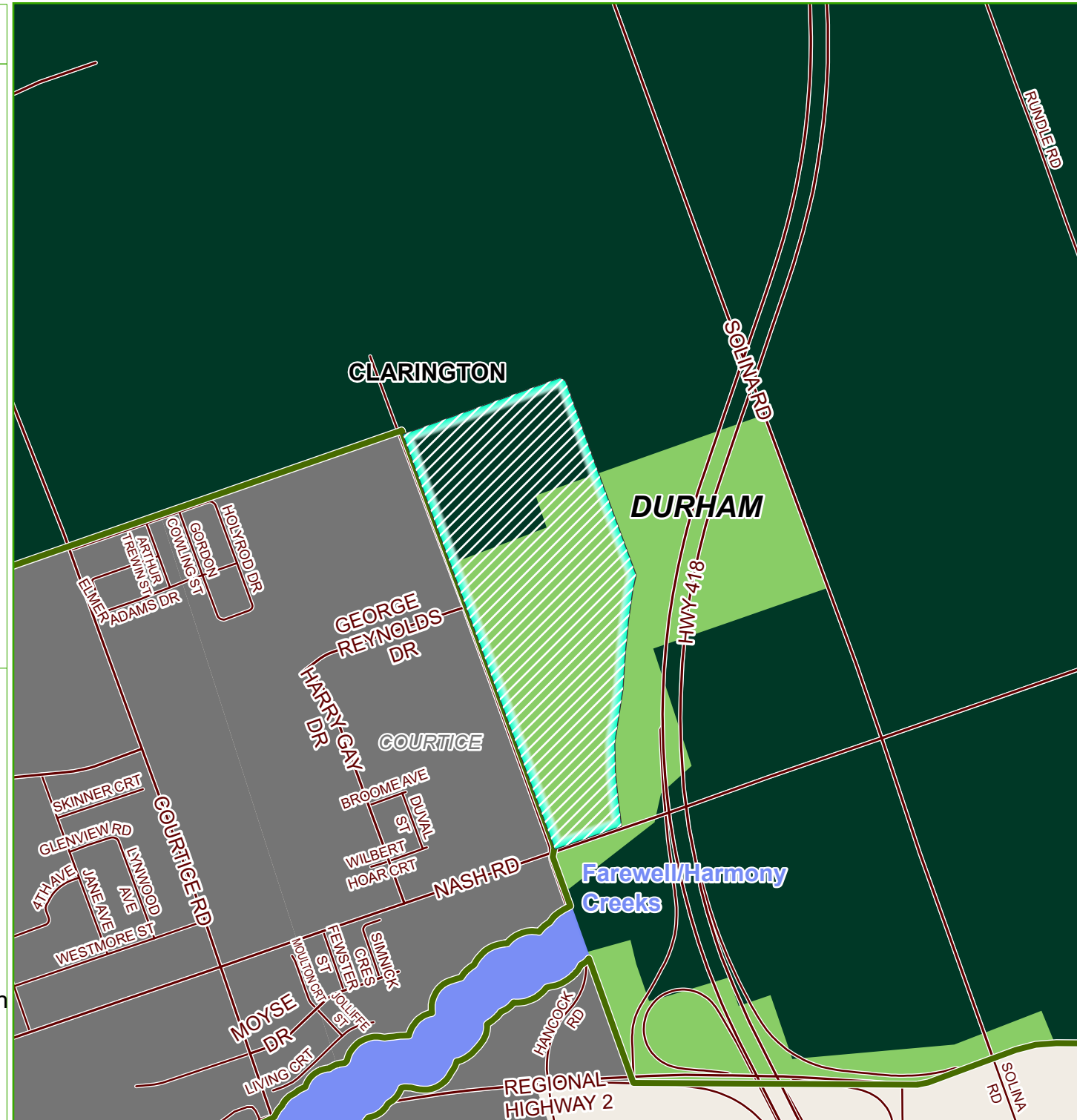


Note: While every effort has been made to accurately depict the information, this map should not be relied on as being a precise indicator of locations of features or roads. For precise boundaries and locations of Settlement Areas, including Towns/Villages and Hamlets, the appropriate municipalities should be consulted.

Produced by and using data sources from the: Ministry of Municipal Affairs and Housing; Ministry of Northern Development, Mines, Natural Resources and Forestry; Ministry of the Environment, Conservation and Parks; and, the Ministry of Agriculture, Food and Rural Affairs.

<https://www.ontario.ca/page/accessible-customer-service-policy>  
 We are committed to providing accessible customer service. On request, we can arrange for accessible formats and communications supports. Please contact MMAH by email ([mininfo@ontario.ca](mailto:mininfo@ontario.ca)) for regulation details.



\*Ontario Regulation 59/05, as amended. © 2022, King's Printer for Ontario








**LEGEND**

Ontario 

-  Greenbelt Area\*
-  Protected Countryside
-  Natural Heritage System
-  Towns/Villages
-  Urban River Valleys
-  Settlement Areas Outside the Greenbelt
-  Municipal Boundary
-  Road or Highway

- Proposed Modifications
-  Greenbelt Redesignation
  -  Greenbelt Removal
  -  ORM Redesignation

0 0.23 0.45 0.9 Km  
1 cm equals 299 m

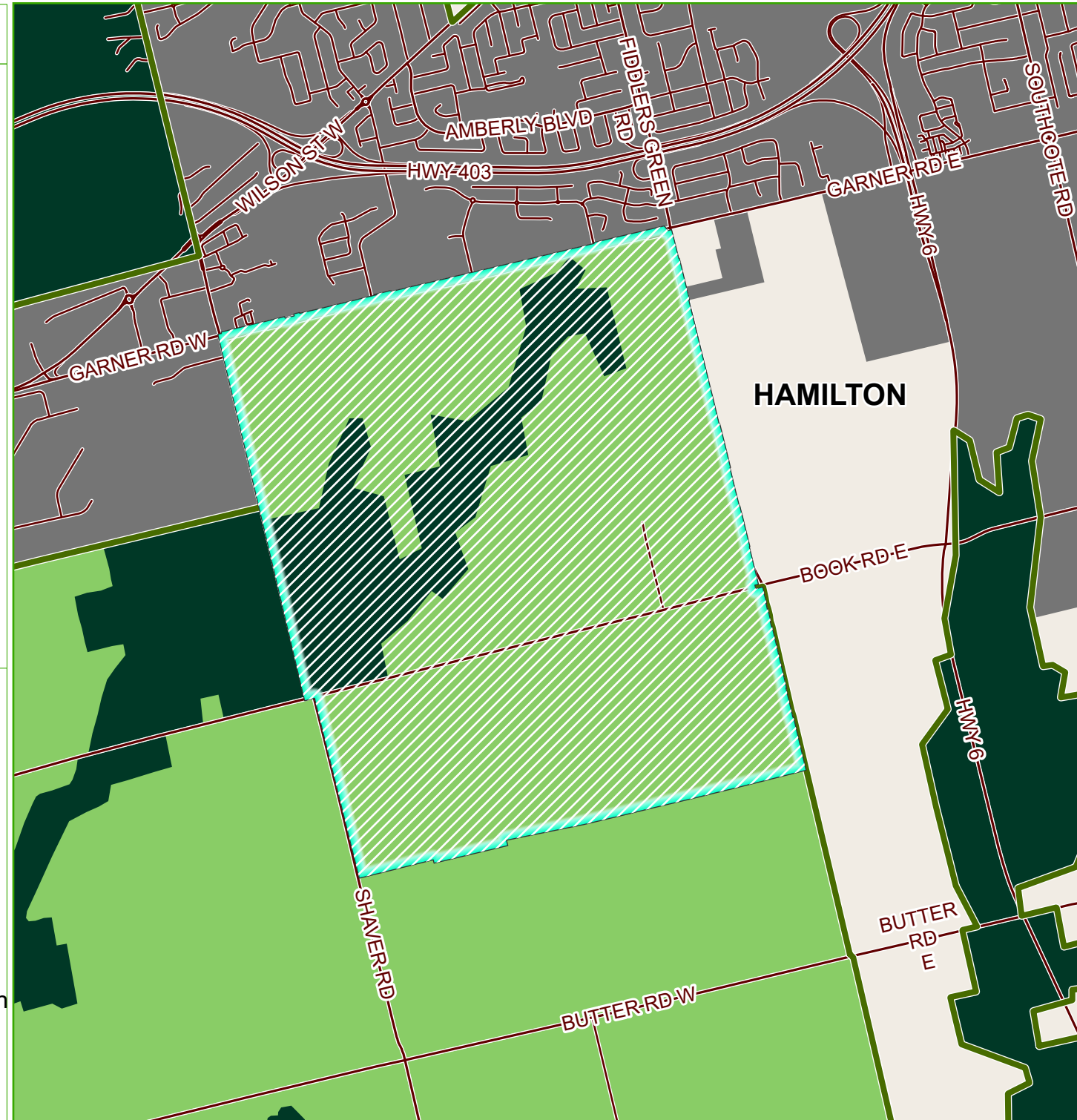
  
Map North: 0°

Note: While every effort has been made to accurately depict the information, this map should not be relied on as being a precise indicator of locations of features or roads. For precise boundaries and locations of Settlement Areas, including Towns/Villages and Hamlets, the appropriate municipalities should be consulted.

Produced by and using data sources from the: Ministry of Municipal Affairs and Housing; Ministry of Northern Development, Mines, Natural Resources and Forestry; Ministry of the Environment, Conservation and Parks; and, the Ministry of Agriculture, Food and Rural Affairs.

<https://www.ontario.ca/page/accessible-customer-service-policy>  
We are committed to providing accessible customer service. On request, we can arrange for accessible formats and communications supports. Please contact MMAH by email ([mininfo@ontario.ca](mailto:mininfo@ontario.ca)) for regulation details.

\*Ontario Regulation 59/05, as amended. © 2022, King's Printer for Ontario

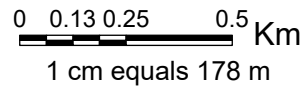


**LEGEND**



- Greenbelt Area\*
- Protected Countryside
- Natural Heritage System
- Towns/Villages
- Urban River Valleys
- Settlement Areas Outside the Greenbelt
- Municipal Boundary
- Road or Highway

- Proposed Modifications**
- Greenbelt Redesignation
  - Greenbelt Removal
  - ORM Redesignation

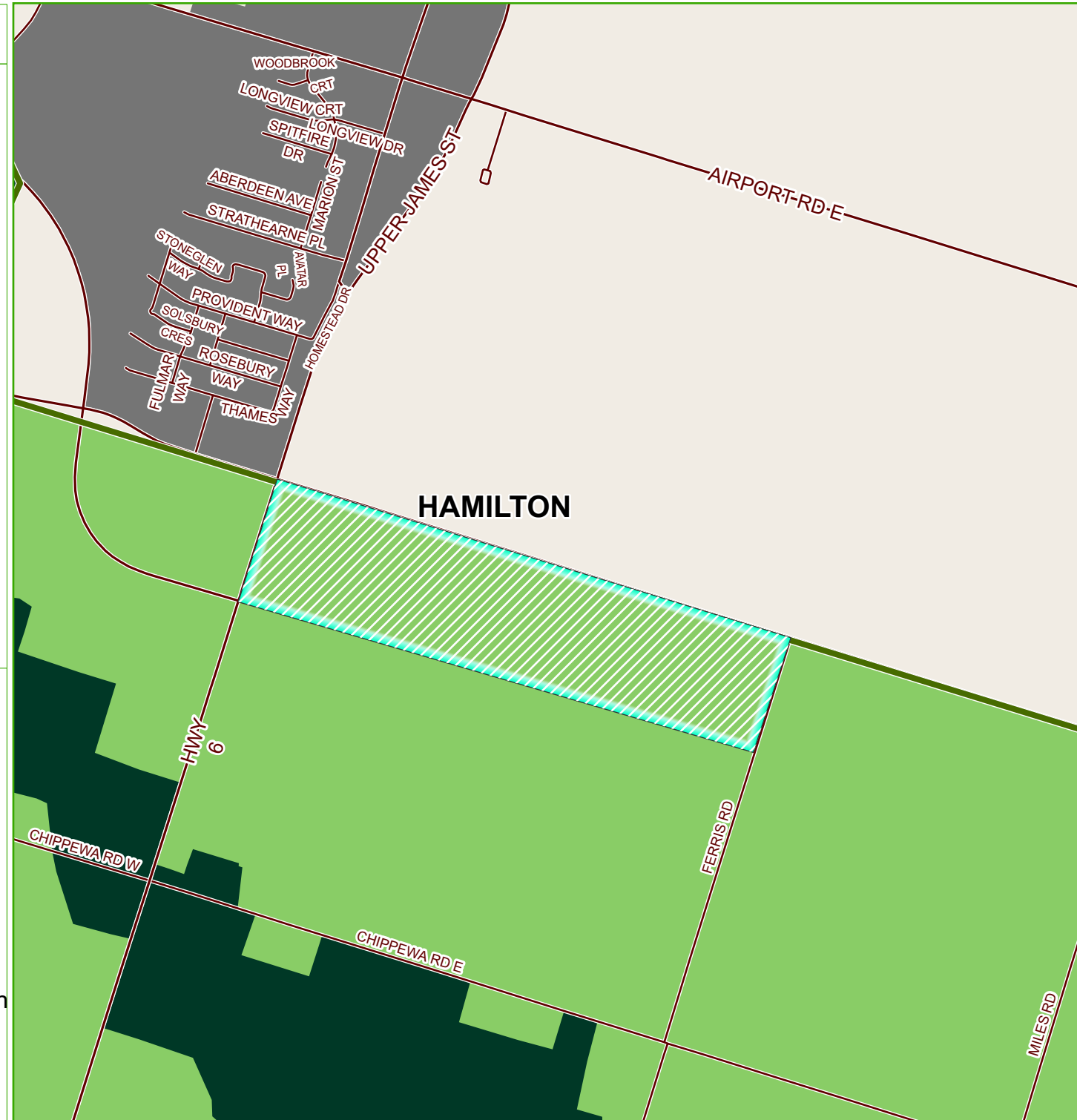


Note: While every effort has been made to accurately depict the information, this map should not be relied on as being a precise indicator of locations of features or roads. For precise boundaries and locations of Settlement Areas, including Towns/Villages and Hamlets, the appropriate municipalities should be consulted.

Produced by and using data sources from the: Ministry of Municipal Affairs and Housing; Ministry of Northern Development, Mines, Natural Resources and Forestry; Ministry of the Environment, Conservation and Parks; and, the Ministry of Agriculture, Food and Rural Affairs.

<https://www.ontario.ca/page/accessible-customer-service-policy>  
 We are committed to providing accessible customer service. On request, we can arrange for accessible formats and communications supports. Please contact MMAH by email ([mininfo@ontario.ca](mailto:mininfo@ontario.ca)) for regulation details.

\*Ontario Regulation 59/05, as amended. © 2022, King's Printer for Ontario

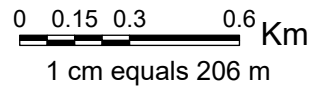


**LEGEND**



- Greenbelt Area\*
- Protected Countryside
- Natural Heritage System
- Towns/Villages
- Urban River Valleys
- Settlement Areas Outside the Greenbelt
- Municipal Boundary
- Road or Highway

- Proposed Modifications
- Greenbelt Redesignation
  - Greenbelt Removal
  - ORM Redesignation



Note: While every effort has been made to accurately depict the information, this map should not be relied on as being a precise indicator of locations of features or roads. For precise boundaries and locations of Settlement Areas, including Towns/Villages and Hamlets, the appropriate municipalities should be consulted.

Produced by and using data sources from the: Ministry of Municipal Affairs and Housing; Ministry of Northern Development, Mines, Natural Resources and Forestry; Ministry of the Environment, Conservation and Parks; and, the Ministry of Agriculture, Food and Rural Affairs.

<https://www.ontario.ca/page/accessible-customer-service-policy>  
 We are committed to providing accessible customer service. On request, we can arrange for accessible formats and communications supports. Please contact MMAH by email ([mininfo@ontario.ca](mailto:mininfo@ontario.ca)) for regulation details.

\*Ontario Regulation 59/05, as amended. © 2022, King's Printer for Ontario

