

*Handwritten:* 4 NOV

SECRET/NOFORN - SKEET CHANNELS ONLY

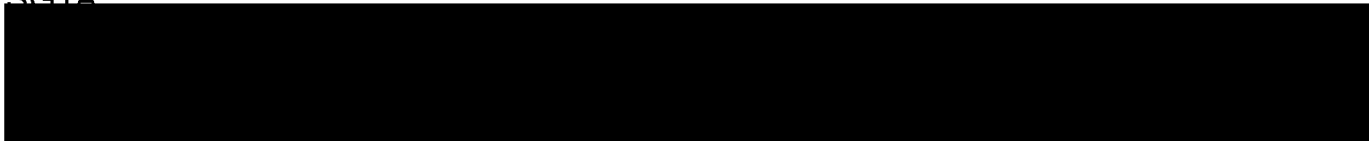
PROJECT SUN STREAK (U)

WARNING NOTICE: INTELLIGENCE SOURCES AND METHODS INVOLVED

Session Procedures Report (S/NF/SK)

PROJECT NUMBER: 8718	SESSION NUMBER: 1
DATE OF SESSION: 2 NOV 87	TARGET COUNTRY: IRAN
REFERENCE:	MISSION STATUS:
TECHNIQUE UTILIZED: CRV	SOURCE IDENTIFIER: 011

SG1A



- 2. (S/NF/SK) Source Tasking: Only the encrypted coordinates (supplied) were provided the viewer at the outset of this session.
- 3. (S/NF/SK) Summary: The viewer's summary and sketches are attached.
- 4. (S/NF/SK) Comments: 011 acquired the target (missiles) immediately, but the monitor did not allow the viewer to spend a great deal of time perceiving them so as to preclude the restricting effects of awareness from limiting further associations. Also, at the beginning of the session, 011's Stage 2 descriptors indicated to the monitor that a ship/water was about to be perceived/described. The monitor did not wish the viewer to perceive these things for fear that it would induce AOL drive of a Persian Gulf scenario. In short, 011 was kept as much in the dark as possible about the nature of the task/target; consequently, the viewing was "pure".

SG1J



CPT, USA

SECRET/NOFORN - SKEET CHANNELS ONLY

CLASSIFIED BY: DIA-DT  
DECLASSIFY : OADR

SESSION SUMMARY

SESSION: 2 NOV 87, 1125-1206 HRS

VIEWER: 011

First impressions are of a long, rectangular, three-dimensional object which has a short, round cylinder on one end (see sketch, page 3). The object feels like it is emersed in some kind of liquid. When I look up I can see blue, but, all around me is dark (AOL/AI- feel like a scuba diver).

Following this object to its next location we find lights, shades of grey, a flash of light, reds, reddish brown, curves and angles. From 1000 feet above this object there are curves and loops. Inside the loop is a criss-cross design (see sketch, page 5).

While trying to follow this object from its present location to its next location the only events of significance perceived was flashes of light. Somewhere during the first third of this journey was a single flash of light. At the final leg of this journey there were a series of directional flashes of light (AOL-directional lighting found on airfield runways).

The time window from location \*1 to location \*2 seems rather limited. It can be measured in hours or days rather than weeks or months.

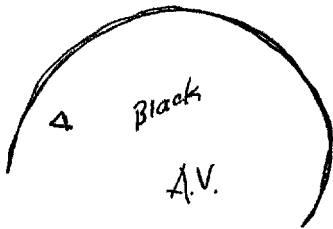
VIEWER 011  
8718

PI's - none

SG1J

2 OCT 87

1125HRS



496501  
336480



Handwritten notes:  
K across 1915le up -  
angle across of flat  
hard  
Structure

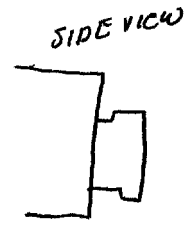
486501  
336480



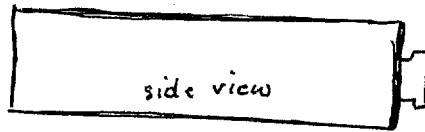
R. across, angles,  
angle across, curving, curving  
hard  
structure

S-2  
dark blue  
green  
red  
straight  
hard  
angles  
grey  
light grey  
flat  
hard  
vertical  
purple  
blue  
green  
red  
dark  
blue  
hard

S-2



AOL break  
camera



S-2      D      AI      EI      T      I      AOL      A/S

blues  
shades of blue  
darkness all around

4 1/2 - looking up. blue, blue, all around is dark, feeling of being immersed.

AOL break

AI break  
feel like I'm a  
scuba diver

S-2

D

AI

EI

T

I

AOL

A/S

OBJECT?  
NEXT LOCATION?

round  
curving  
angles



lights  
lights

~~set~~ curve  
curving

shades of gray

flash of light

reds

reddish/browns

curving -  
angles

complex

OBJECT?

flashing  
flashing light  
pulsing

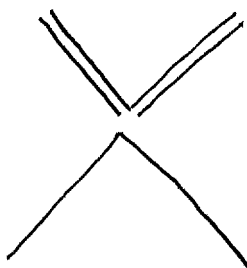
From 1000 of high speed photography  
Keruech

angles

hard

square

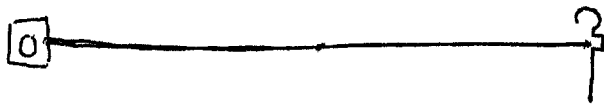
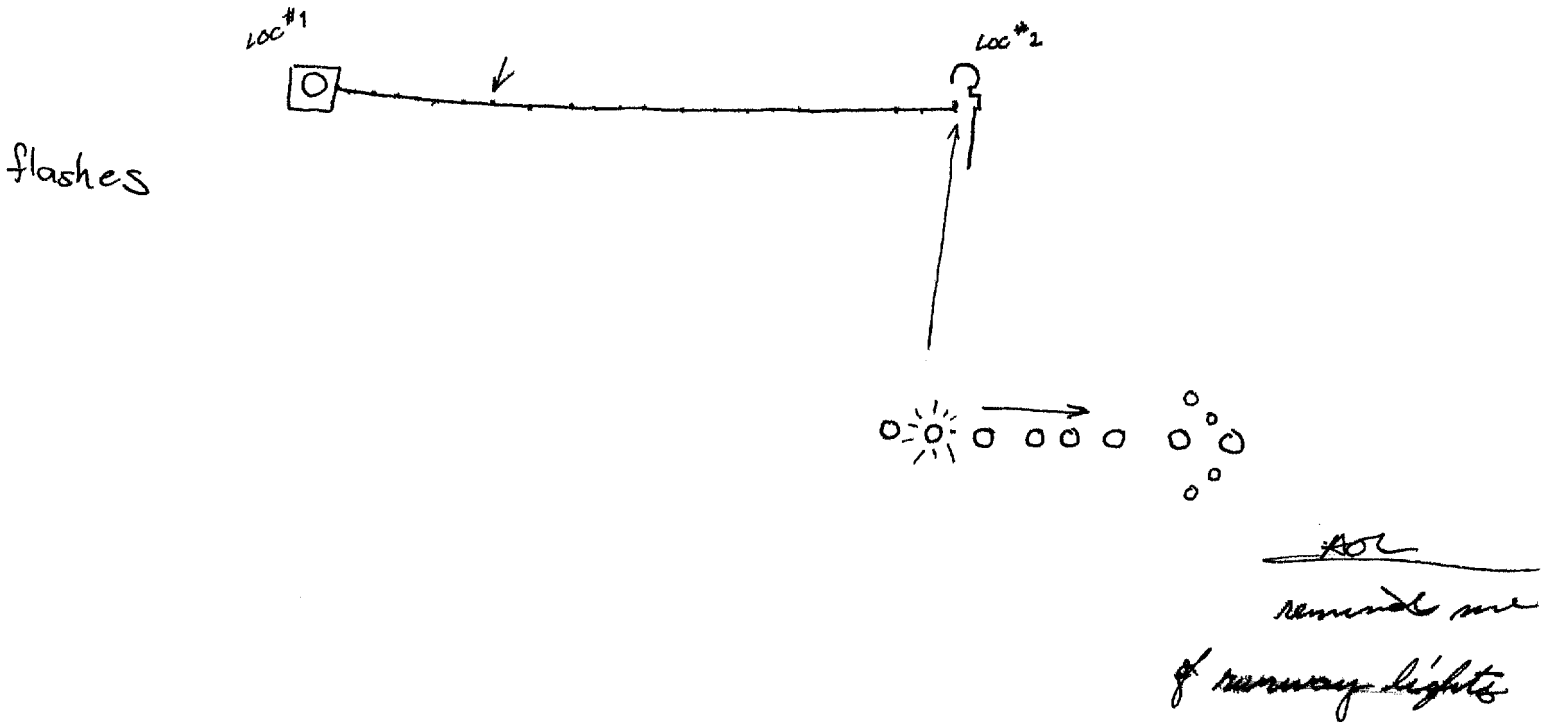
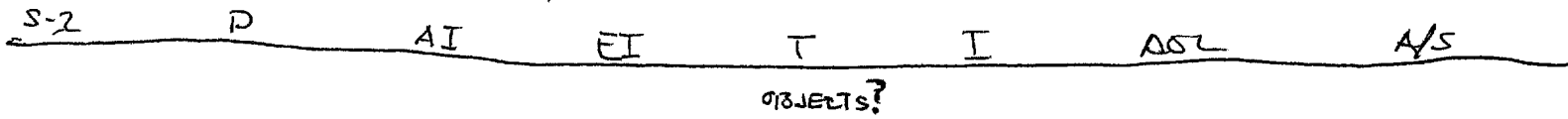
criss-cross



A, curving, loop,  
circle curving  
loop/curve, curving  
loop/circle, curving  
angle

VIEWER 011

From the first point to present location describe the movement?



time frame? - not very long hours or days  
 not weeks or months

END 1206 hrs