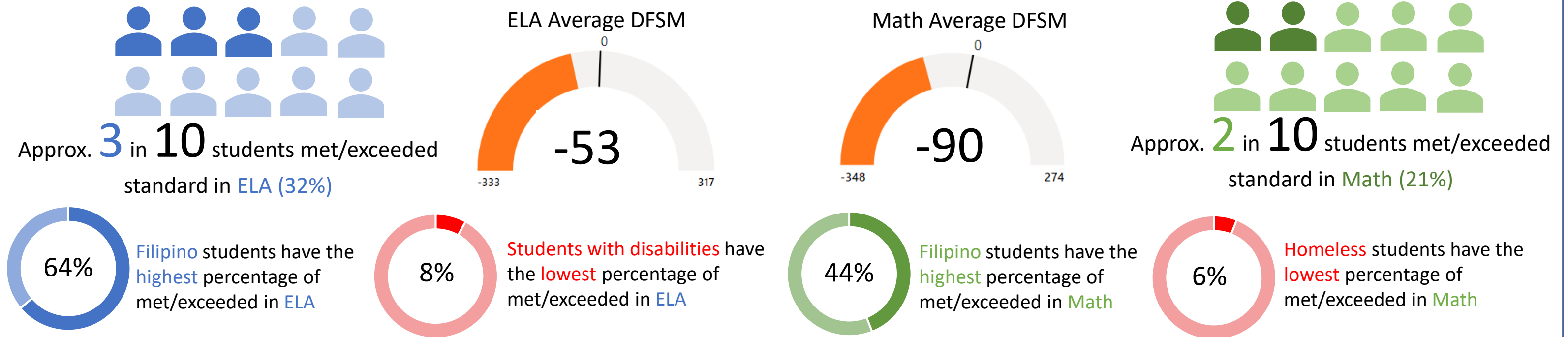


2021-22 California Assessment of Student Performance and Progress (CAASPP) and Summative and Alternate English Language Proficiency Assessments for California (ELPAC) Final Results

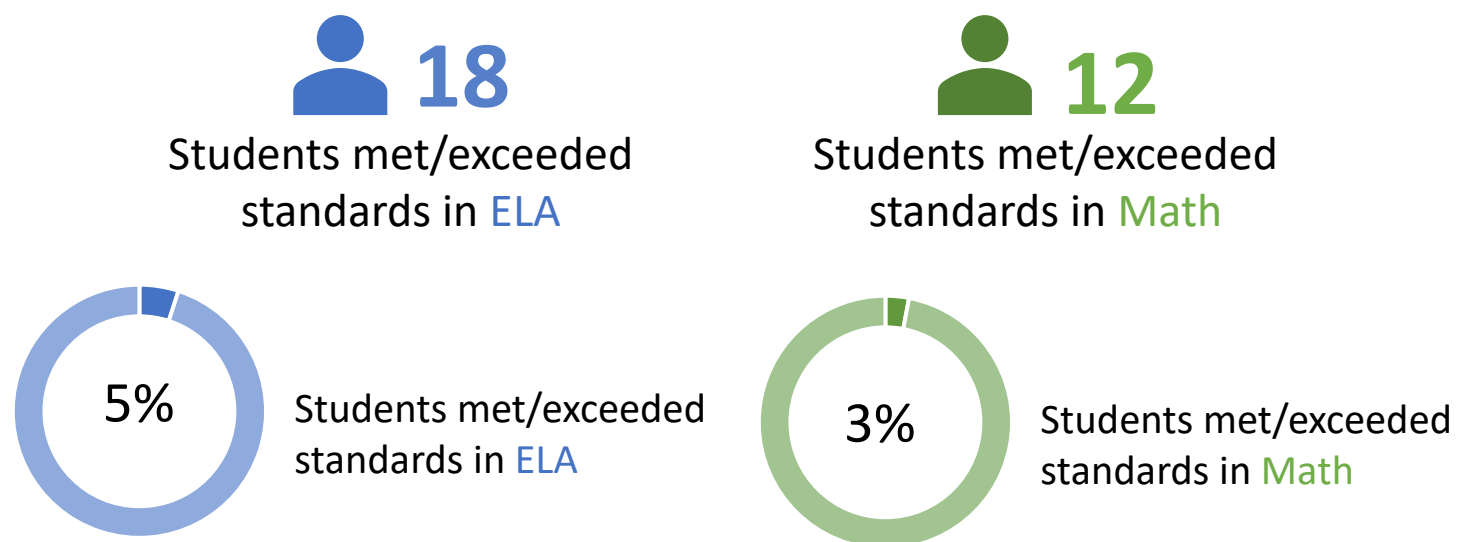
Smarter Balanced Assessments (SBAC)

Students in grades 3-8 and 11 participate in SBAC for ELA and Math. Distance from Standard Met (DFSM) and participation rate are used to calculate the Academic Indicators on the California School Dashboard (N=35,620).



California Alternate Assessment (CAA)

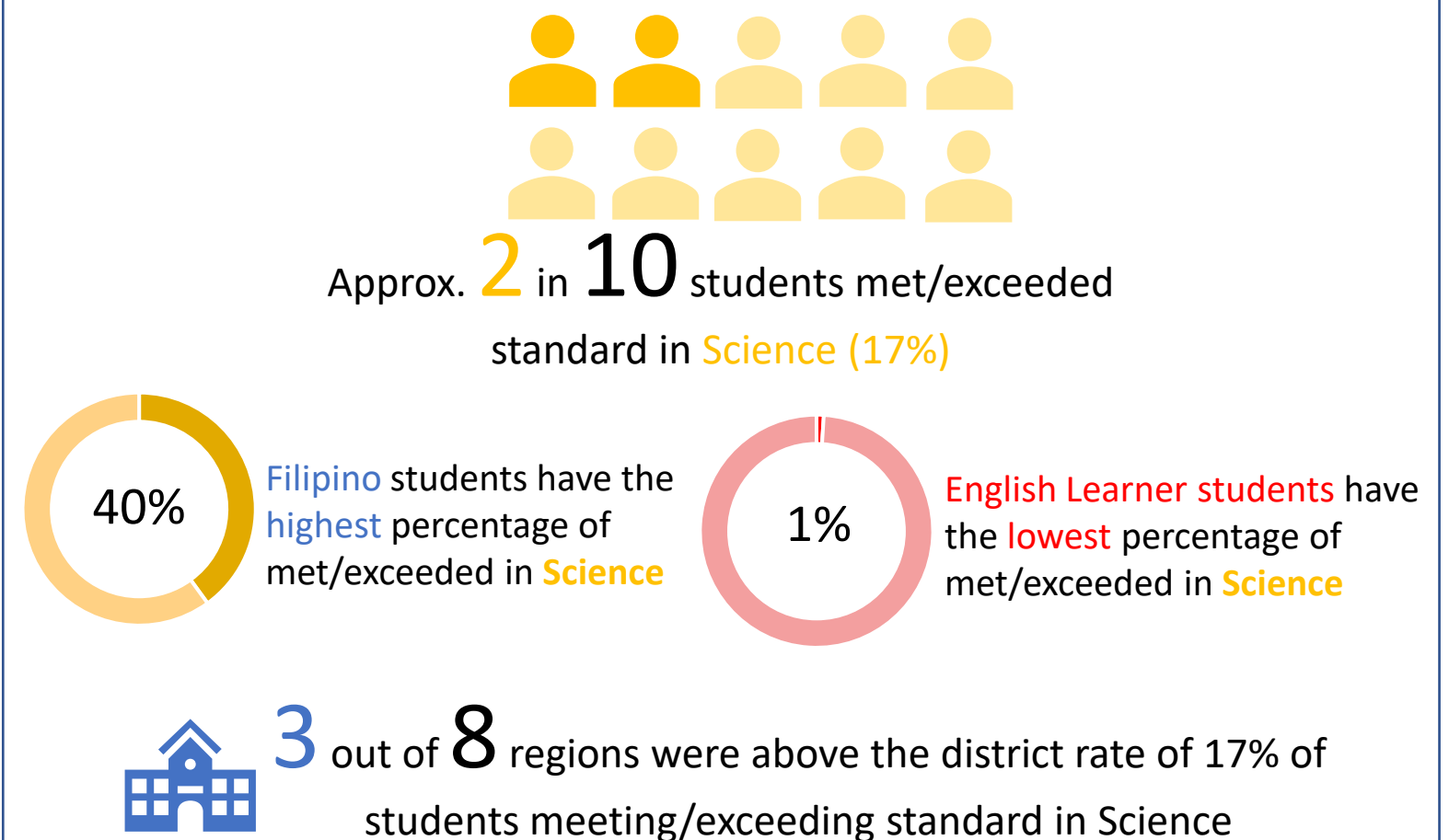
Students in grades 3-8 and 11 with the most significant cognitive disabilities and whose IEP indicates the use of an alternate assessment on statewide assessments participate in the CAA for ELA and Math (N=365).



NOTE: Most values are suppressed as fewer than 11 students at each school and in most of our student groups met/exceeded standards in ELA and Math.

California Science Test (CAST)

All students in grades 5, 8, 11, and/or 12 take the CAST.



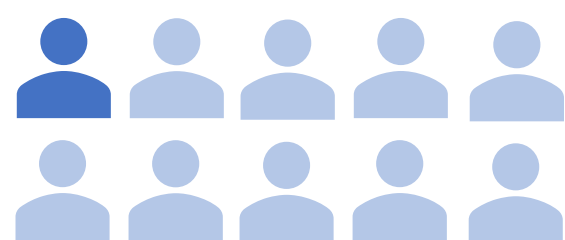
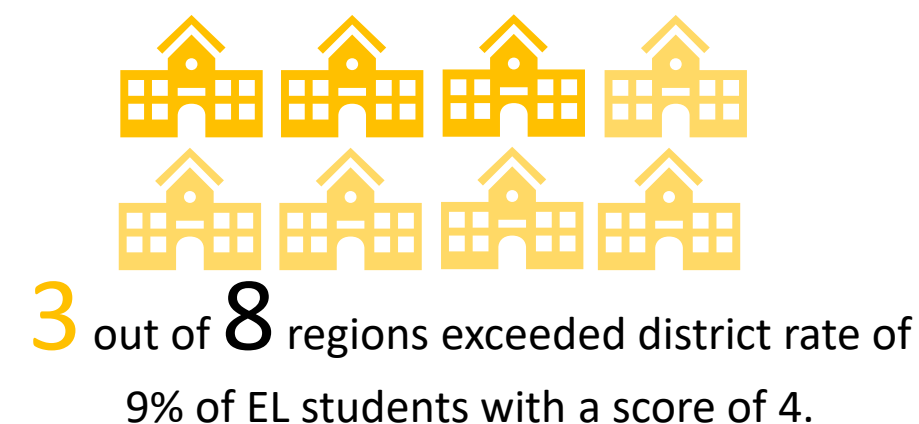
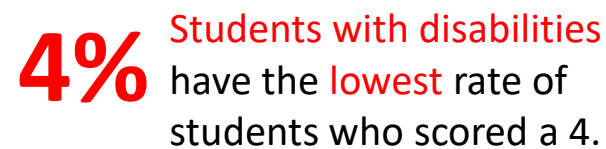
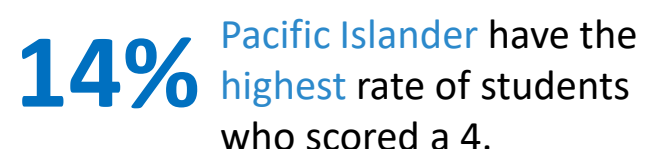
2021-22 California Assessment of Student Performance and Progress (CAASPP) and Summative and Alternate English Language Proficiency Assessments for California (ELPAC) Final Results

Summative English Language Proficiency Assessment for California (ELPAC)

All EL students in grades K-12 are required to participate in the Summative ELPAC. A score of 4 is needed to be eligible for reclassification.

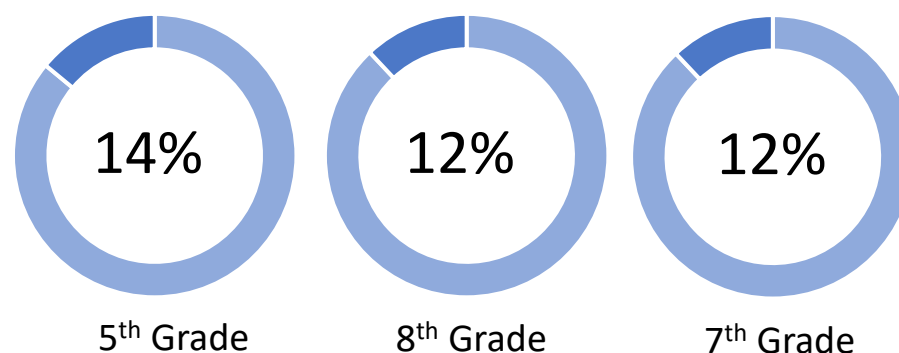


EL students participated in 2021-22

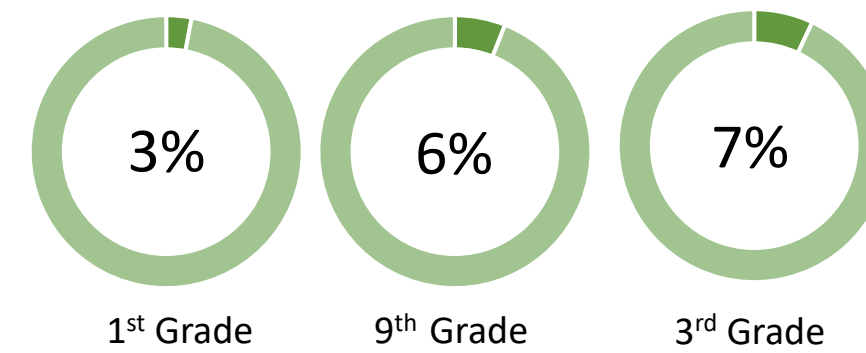


Approx. **1** in **10** students scored a 4 (9%)

Top 3 grade levels with highest rate of EL students with a score of 4



Top 3 grade levels with lowest rate of EL students with a score of 4

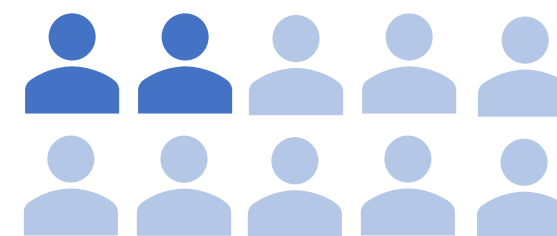


Alternate Summative ELPAC

All EL students in grades K-12 with the most significant cognitive disabilities and whose IEP indicates the use of an alternate assessment on statewide assessments are required to participate in the Alternate Summative ELPAC. A score of 3 is needed to be eligible for reclassification.



EL students participated in 2021-22



Approx. **2** in **10** students scored a 3 (16%)

NOTE: Most values are suppressed as fewer than 11 students at each school and in most of our student groups scored a 3 on the Alternate ELPAC.

2022 SBAC Results: Proficiency and Distance from Standard Met by Region and School

School	SBAC ELA				SBAC Math			
	Count Test Takers	Standard Met/Exceeded		DFSM	Count Test Takers	Standard Met/Exceeded		DFSM
		N	%	Average		N	%	Average
District	35620	11430	32.1%	-53	35537	7345	20.7%	-90
Bullard Region	3994	1489	37.3%	-39	3987	1006	25.2%	-75
Bullard High	536	204	38.1%	-40	528	83	15.7%	-125
Figarden Elementary	298	105	35.2%	-38	300	85	28.3%	-60
Gibson Elementary	213	100	46.9%	-12	214	82	38.3%	-36
Kratt Elementary	270	89	33.0%	-45	267	65	24.3%	-67
Lawless Elementary	308	103	33.4%	-46	309	78	25.2%	-66
Malloch Elementary	214	121	56.5%	4	215	89	41.4%	-23
Powers-Ginsburg Elementary	244	70	28.7%	-54	245	53	21.6%	-72
Slater Elementary	355	100	28.2%	-58	350	71	20.3%	-79
Starr Elementary	172	87	50.6%	-11	169	70	41.4%	-18
Tatarian Elementary	235	120	51.1%	-4	235	106	45.1%	-20
Tenaya Middle	739	286	38.7%	-42	750	149	19.9%	-93
Wawona Middle	410	104	25.4%	-66	405	75	18.5%	-99
Edison Region	4238	1903	44.9%	-23	4205	1436	34.1%	-57
Addams Elementary	399	51	12.8%	-99	402	43	10.7%	-104
Columbia Elementary	282	61	21.6%	-80	279	44	15.8%	-94
Computech Middle	760	641	84.3%	71	748	440	58.8%	16
Edison High	491	300	61.1%	21	490	146	29.8%	-79
Gaston Middle	741	143	19.3%	-92	727	52	7.2%	-147
King Elementary	319	46	14.4%	-94	312	40	12.8%	-100
Kirk Elementary	183	21	11.5%	-97	185	24	13.0%	-93
Lincoln Elementary	308	85	27.6%	-66	306	96	31.4%	-58
Manchester Gate Elementary	570	481	84.4%	71	571	486	85.1%	59
Sunset Elementary	185	74	40.0%	-26	185	65	35.1%	-37
Fresno Region	4234	986	23.3%	-71	4226	565	13.4%	-108
Cooper Middle	512	189	36.9%	-27	512	95	18.6%	-88
Del Mar Elementary	277	66	23.8%	-75	277	47	17.0%	-92
Fort Miller Middle	629	104	16.5%	-100	630	30	4.8%	-159
Fremont Elementary	234	43	18.4%	-80	233	40	17.2%	-91
Fresno High	331	93	28.1%	-71	339	32	9.4%	-153

School	SBAC ELA				SBAC Math			
	Count Test Takers	Standard Met/Exceeded		DFSM	Count Test Takers	Standard Met/Exceeded		DFSM
		N	%	Average		N	%	Average
Hamilton K-8	505	142	28.1%	-52	502	77	15.3%	-101
Heaton Elementary	258	34	13.2%	-100	256	21	8.2%	-122
Homan Elementary	327	68	20.8%	-78	326	50	15.3%	-87
Muir Elementary	239	45	18.8%	-79	240	31	12.9%	-90
Roeding Elementary	270	62	23.0%	-62	268	49	18.3%	-78
Williams Elementary	313	65	20.8%	-77	309	55	17.8%	-93
Wilson Elementary	339	75	22.1%	-74	334	38	11.4%	-97
Hoover Region	4479	1324	29.6%	-57	4483	785	17.5%	-94
Ahwahnee Middle	621	197	31.7%	-58	623	85	13.6%	-113
Centennial Elementary	386	100	25.9%	-63	386	57	14.8%	-87
Eaton Elementary	218	105	48.2%	-8	220	91	41.4%	-23
Holland Elementary	232	56	24.1%	-64	231	34	14.7%	-81
Hoover High	384	146	38.0%	-41	382	25	6.5%	-148
McCardle Elementary	237	76	32.1%	-38	238	83	34.9%	-45
Pyle Elementary	390	79	20.3%	-90	392	56	14.3%	-109
Robinson Elementary	233	84	36.1%	-33	233	59	25.3%	-56
Thomas Elementary	381	85	22.3%	-69	375	55	14.7%	-96
Tioga Middle	617	157	25.4%	-73	621	75	12.1%	-127
Viking Elementary	347	122	35.2%	-39	348	83	23.9%	-61
Vinland Elementary	243	67	27.6%	-65	244	46	18.9%	-85
Wolters Elementary	190	50	26.3%	-55	190	36	18.9%	-77
McLane Region*	5070	1478	29.2%	-61	5080	952	18.7%	-93
Birney Elementary	421	134	31.8%	-52	419	113	27.0%	-66
Ericson Elementary	384	118	30.7%	-56	384	83	21.6%	-78
Ewing Elementary	414	124	30.0%	-52	414	126	30.4%	-53
Hidalgo Elementary	312	40	12.8%	-105	312	34	10.9%	-115
Leavenworth Elementary	465	198	42.6%	-30	464	140	30.2%	-54
Mayfair Elementary	313	71	22.7%	-74	313	56	17.9%	-87
McLane High	291	73	25.1%	-90	298	--	--	--
Norseman Elementary	310	84	27.1%	-67	310	54	17.4%	-74
Rowell Elementary	312	91	29.2%	-53	320	60	18.8%	-75
Scandinavian Middle	712	208	29.2%	-56	714	100	14.0%	-121

School	SBAC ELA				SBAC Math			
	Count Test Takers	Standard Met/Exceeded		DFSM	Count Test Takers	Standard Met/Exceeded		DFSM
		N	%	Average		N	%	Average
Turner Elementary	308	72	23.4%	-80	308	50	16.2%	-99
Wishon Elementary	241	93	38.6%	-34	240	65	27.1%	-54
Yosemite Middle	587	172	29.3%	-68	584	61	10.4%	-126
Roosevelt Region	4848	1482	30.6%	-57	4848	1001	20.6%	-90
Anthony Elementary	211	76	36.0%	-40	202	72	35.6%	-44
Balderas Elementary	343	96	28.0%	-61	344	78	22.7%	-72
Calwa Elementary	324	64	19.8%	-85	328	36	11.0%	-108
Jackson Elementary	224	69	30.8%	-45	223	49	22.0%	-63
Jefferson Elementary	231	91	39.4%	-31	232	69	29.7%	-54
Lane Elementary	283	70	24.7%	-65	284	49	17.3%	-87
Lowell Elementary	199	50	25.1%	-75	198	35	17.7%	-90
Roosevelt High	439	175	39.9%	-41	440	35	8.0%	-150
Sequoia Middle	814	230	28.3%	-67	803	151	18.8%	-104
Tehipite Middle	417	85	20.4%	-91	432	18	4.2%	-165
Vang Pao Elementary	435	157	36.1%	-41	436	143	32.8%	-50
Webster Elementary	166	37	22.3%	-67	168	36	21.4%	-89
Winchell Elementary	375	101	26.9%	-64	371	78	21.0%	-77
Yokomi Elementary	387	181	46.8%	-10	387	152	39.3%	-35
Sunnyside Region	4975	1505	30.3%	-56	4956	941	19.0%	-95
Ayer Elementary	358	81	22.6%	-79	357	60	16.8%	-94
Aynsworth Elementary	344	77	22.4%	-72	343	48	14.0%	-98
Bakman Elementary	400	102	25.5%	-62	403	74	18.4%	-75
Burroughs Elementary	385	108	28.1%	-60	384	83	21.6%	-82
Easterby Elementary	366	128	35.0%	-46	366	117	32.0%	-56
Greenberg Elementary	303	89	29.4%	-56	303	57	18.8%	-63
Kings Canyon Middle	850	262	30.8%	-58	847	129	15.2%	-112
Olmos Elementary	341	82	24.0%	-67	337	53	15.7%	-93
Storey Elementary	470	226	48.1%	-9	470	185	39.4%	-35
Sunnyside High	583	207	35.5%	-45	569	56	9.8%	-150
Terronez Middle	575	143	24.9%	-72	577	79	13.7%	-128
Specialty Region	3782	1263	33.4%	-52	3752	659	17.6%	-104
Baird Middle	559	332	59.4%	16	559	202	36.1%	-28

School	SBAC ELA				SBAC Math			
	Count Test Takers	Standard Met/Exceeded		DFSM	Count Test Takers	Standard Met/Exceeded		DFSM
		N	%	Average		N	%	Average
Bullard Talent K-8	516	289	56.0%	10	516	200	38.8%	-28
Cambridge High	176	--	--	--	177	--	--	--
Design Science High	53	41	77.4%	62	51	26	51.0%	-1
Dewolf High	117	15	12.8%	-103	117	0	0.0%	-215
Duncan Polytech High	279	148	53.0%	6	280	31	11.1%	-115
eLearn Academy	1782	360	20.2%	-83	1759	186	10.6%	-121
Fulton School	5	--	--	--	0	0	0.0%	0
JE Young Academic High	186	42	22.6%	-81	185	11	5.9%	-173
Patino Entrepreneurship High	39	25	64.1%	22	39	--	--	--
Phoenix Elementary	24	--	--	--	22	--	--	--
Phoenix Secondary	46	--	--	--	47	--	--	--

*Student groups with a sample size of less than 11 are not reported out in alignment with CDE guidelines

*For students to have Met/Exceeded standard, that had to have scored a Level 3 or 4

*DFSM: Distance from Standard Met; averaged scale score points by group

2022 SBAC Results: Proficiency and Distance from Standard Met by Student Group

Student Group	SBAC ELA				SBAC Math			
	Count Test Takers	Standard Met/Exceeded		DFSM	Count Test Takers	Standard Met/Exceeded		DFSM
		N	%	Average		N	%	Average
District	35620	11430	32.1%	-52	35537	7345	20.7%	-90
English Learner	6888	642	9.3%	-113	6921	532	7.7%	-134
Foster Youth	326	63	19.3%	-83	317	36	11.4%	-120
Homeless	292	40	13.7%	-108	289	17	5.9%	-145
Socioeconomically Disadvant	30511	8907	29.2%	-60	30421	5570	18.3%	-96
Student w/ Disability	4243	339	8.0%	-135	4235	264	6.2%	-167
African American/Black	2700	503	18.6%	-86	2691	269	10.0%	-128
Asian	3586	1406	39.2%	-31	3588	975	27.2%	-66
Filipino	91	58	63.7%	23	91	40	44.0%	-22
Hispanic	24932	7552	30.3%	-57	24888	4674	18.8%	-95
Native American/Alaskan	219	62	28.3%	-60	219	37	16.9%	-88
Pacific Islander	137	48	35.0%	-55	138	26	18.8%	-85
Two or More Races	1117	426	38.1%	-37	1112	313	28.1%	-72
White	2838	1375	48.4%	-13	2810	1011	36.0%	-49

*Student groups with a sample size of less than 11 are not reported out in alignment with CDE guidelines

*For students to have Met/Exceeded standard, that had to have scored a Level 3 or 4

*DFSM: Distance from Standard Met; averaged scale score points by group

2022 SBAC Results: Proficiency and Distance from Standard Met by Grade Level

Grade Level	SBAC ELA				SBAC Math			
	Count Test Takers	Standard Met/Exceeded		DFSM	Count Test Takers	Standard Met/Exceeded		DFSM
		N	%	Average		N	%	Average
District	35620	11430	32.1%	-52	35537	7345	20.7%	-90
3rd Grade	5440	1458	26.8%	-62	5420	1564	28.9%	-52
4th Grade	5281	1549	29.3%	-57	5268	1273	24.2%	-64
5th Grade	5467	1817	33.2%	-48	5425	1085	20.0%	-83
6th Grade	5479	1839	33.6%	-45	5474	1256	22.9%	-84
7th Grade	4928	1703	34.6%	-51	4951	895	18.1%	-103
8th Grade	5112	1584	31.0%	-58	5101	814	16.0%	-117
11th Grade	3913	1480	37.8%	-44	3898	458	11.7%	-141

*Student groups with a sample size of less than 11 are not reported out in alignment with CDE guidelines

*For students to have Met/Exceeded standard, that had to have scored a Level 3 or 4

*DFSM: Distance from Standard Met; averaged scale score points by group

2022 California Alternate Assessment (CAA) Results: Proficiency by Region and School

School	CAA ELA			CAA Math		
	Count Test Takers	Standard Met/Exceeded		Count Test Takers	Standard Met/Exceeded	
		N	%		N	%
District	365	18	4.9%	363	12	3.3%
Bullard Region*	44	--	--	44	--	--
Bullard High	2	--	--	2	--	--
Figarden Elementary	11	--	--	11	--	--
Gibson Elementary	8	--	--	8	--	--
Powers-Ginsburg Elementary	6	--	--	6	--	--
Starr Elementary	5	--	--	5	--	--
Tenaya Middle	12	--	--	12	--	--
Edison Region*	30	--	--	30	--	--
Columbia Elementary	8	--	--	8	--	--
Edison High	3	--	--	3	--	--
Gaston Middle	8	--	--	8	--	--
Kirk Elementary	11	--	--	11	--	--
Fresno Region*	50	--	--	50	--	--
Hamilton K-8	28	--	--	28	--	--
Heaton Elementary	7	--	--	7	--	--
Muir Elementary	11	--	--	11	--	--
Roeding Elementary	4	--	--	4	--	--
Hoover Region*	68	--	--	68	--	--
Ahwahnee Middle	15	--	--	15	--	--
Eaton Elementary	15	--	--	15	--	--
Holland Elementary	10	--	--	10	--	--
Hoover High	5	--	--	5	--	--
Pyle Elementary	11	--	--	11	--	--
Robinson Elementary	12	--	--	12	--	--
McLane Region*	64	--	--	63	--	--
Ericson Elementary	9	--	--	9	--	--
Ewing Elementary	9	--	--	9	--	--
Hidalgo Elementary	8	--	--	8	--	--
McLane High	8	--	--	8	--	--

School	CAA ELA			CAA Math		
	Count Test Takers	Standard Met/Exceeded		Count Test Takers	Standard Met/Exceeded	
		N	%		N	%
Norseman Elementary	4	--	--	4	--	--
Scandinavian Middle	16	--	--	15	--	--
Wishon Elementary	10	--	--	10	--	--
Roosevelt Region*	44	--	--	44	--	--
Anthony Elementary	3	--	--	3	--	--
Jefferson Elementary	5	--	--	5	--	--
Lane Elementary	13	--	--	13	--	--
Roosevelt High	8	--	--	8	--	--
Sequoia Middle	7	--	--	7	--	--
Tehipite Middle	8	--	--	8	--	--
Sunnyside Region*	47	--	--	46	--	--
Ayer Elementary	11	--	--	11	--	--
Greenberg Elementary	11	--	--	10	--	--
Storey Elementary	6	--	--	6	--	--
Sunnyside High	7	--	--	7	--	--
Terronez Middle	12	--	--	12	--	--
Specialty Region*	18	--	--	18	--	--
Addicott School	17	--	--	17	--	--
Baird Middle	1	--	--	1	--	--

*Student groups with a sample size of less than 11 are not reported out in alignment with CDE guidelines

*For students to have Met/Exceeded standard, that had to have scored a Level 3 or 4

*The CAAs are for students with the most significant cognitive disabilities and whose individualized education program (IEP) team has designated the use of an alternate assessment on statewide summative assessments

2022 California Alternate Assessment (CAA) Results: Proficiency by Student Group

Student Group	CAA ELA			CAA Math		
	Count Test Takers	Standard Met/Exceeded		Count Test Takers	Standard Met/Exceeded	
		N	%		N	%
District	365	18	4.9%	363	12	3.3%
English Learner*	104	--	--	104	--	--
Foster Youth*	14	--	--	14	--	--
Homeless*	1	--	--	1	--	--
Socioeconomically Disadvantaged	297	16	5.4%	297	--	--
Student w/ Disability*	365	18	4.9%	363	12	3.3%
African American/Black*	30	--	--	30	--	--
Asian *	37	--	--	36	--	--
Filipino*	2	--	--	2	--	--
Hispanic	232	13	5.6%	231	11	4.8%
Native American/Alaskan*	4	--	--	4	--	--
Pacific Islander *	2	--	--	2	--	--
Two or More Races*	19	--	--	19	--	--
White	39	--	--	39	--	--

*Student groups with a sample size of less than 11 are not reported out in alignment with CDE guidelines

*For students to have Met/Exceeded standard, that had to have scored a Level 3 or 4

*The CAAs are for students with the most significant cognitive disabilities and whose individualized education program (IEP) team has designated the use of an alternate assessment on statewide summative assessments.

2022 California Alternate Assessment (CAA) Results: Proficiency by Grade Level

Grade Level	CAA ELA			CAA Math		
	Count Test Takers	Standard Met/Exceeded		Count Test Takers	Standard Met/Exceeded	
		N	%		N	%
District	365	18	4.9%	363	12	3.3%
3rd Grade*	57	--	--	56	--	--
4th Grade	75	--	--	75	--	--
5th Grade*	52	--	--	52	--	--
6th Grade*	52	--	--	52	--	--
7th Grade*	46	--	--	45	--	--
8th Grade	50	--	--	50	--	--
11th Grade*	33	--	--	33	--	--

*Student groups with a sample size of less than 11 are not reported out in alignment with CDE guidelines

*For students to have Met/Exceeded standard, that had to have scored a Level 3 or 4

*The CAAs are for students with the most significant cognitive disabilities and whose individualized education program (IEP) team has designated the use of an alternate assessment on statewide summative assessments

2022 California Science Test (CAST) Results: Proficiency by Region and School

School	CAST		
	Count Test Takers	Standard Met/Exceeded	
		N	%
District	16689	2738	16.4%
Bullard Region	2133	414	19.4%
Bullard High	1049	215	20.5%
Figarden Elementary	68	19	27.9%
Forkner Elementary	47	11	23.4%
Gibson Elementary	64	11	17.2%
Kratt Elementary	78	18	23.1%
Lawless Elementary	43	15	34.9%
Malloch Elementary	66	--	--
Powers-Ginsburg Elementary	70	12	17.1%
Slater Elementary	45	13	28.9%
Starr Elementary	57	15	26.3%
Tenaya Middle	382	52	13.6%
Wawona Middle	164	24	14.6%
Edison Region	2172	745	34.3%
Addams Elementary	92	--	--
Columbia Elementary	69	13	18.8%
Computech Middle	355	229	64.5%
Edison High	890	340	38.2%
Gaston Middle	372	14	3.8%
King Elementary	77	--	--
Kirk Elementary	43	1	2.3%
Lincoln Elementary	81	12	14.8%
Manchester Gate Elementary	149	112	75.2%
Sunset Elementary	44		15.9%
Fresno Region*	1789	159	8.9%
Cooper Middle	188	28	14.9%
Del Mar Elementary	65	--	--
Fort Miller Middle	295	12	4.1%

School	CAST		
	Count Test Takers	Standard Met/Exceeded	
		N	%
Fremont Elementary	59	--	--
Fresno High	547	42	7.7%
Hamilton K-8	183	17	9.3%
Heaton Elementary	70	--	--
Homan Elementary	82	--	--
Muir Elementary	66	--	--
Roeding Elementary	78	--	--
Williams Elementary	63	--	--
Wilson Elementary	93	--	--
Hoover Region	1993	235	11.8%
Ahwahnee Middle	331	36	10.9%
Centennial Elementary	100	13	13.0%
Eaton Elementary	54	--	--
Holland Elementary	65	14	21.5%
Hoover High	601	75	12.5%
McCardle Elementary	60	--	--
Pyle Elementary	118	14	11.9%
Robinson Elementary	57	--	--
Thomas Elementary	81	--	--
Tioga Middle	328	18	5.5%
Viking Elementary	94	19	20.2%
Vinland Elementary	58	--	--
Wolters Elementary	46	--	--
McLane Region	2180	206	9.4%
Birney Elementary	116	17	14.7%
Ericson Elementary	95	--	--
Ewing Elementary	105	15	14.3%
Hidalgo Elementary	85	--	--
Leavenworth Elementary	111	14	12.6%
Mayfair Elementary	87	--	--
McLane High	657	49	7.5%

School	CAST		
	Count Test Takers	Standard Met/Exceeded	
		N	%
Norseman Elementary	66	--	--
Rowell Elementary	72	--	--
Scandinavian Middle	344	35	10.2%
Turner Elementary	74	--	--
Wishon Elementary	67	19	28.4%
Yosemite Middle	301	18	6.0%
Roosevelt Region	1435	184	12.8%
Anthony Elementary	45	--	--
Balderas Elementary	89	14	15.7%
Calwa Elementary	86	--	--
Jackson Elementary	55	--	--
Jefferson Elementary	56	12	21.4%
Lane Elementary	63	--	--
Lowell Elementary	52	--	--
Roosevelt High	0	--	--
Sequoia Middle	451	41	9.1%
Tehipite Middle	210	--	--
Vang Pao Elementary	99	20	20.2%
Webster Elementary	42	--	--
Winchell Elementary	103	--	--
Yokomi Elementary	84	41	48.8%
Sunnyside Region	2609	360	13.8%
Ayer Elementary	105	--	--
Aynesworth Elementary	83	--	--
Bakman Elementary	100	--	--
Burroughs Elementary	99	14	14.1%
Easterby Elementary	89	29	32.6%
Greenberg Elementary	84	12	14.3%
Kings Canyon Middle	421	51	12.1%
Olmos Elementary	85	10	11.8%
Storey Elementary	122	46	37.7%

School	CAST		
	Count Test Takers	Standard Met/Exceeded	
		N	%
Sunnyside High	1117	138	12.4%
Terronez Middle	304	43	14.1%
Specialty Region	2378	435	18.3%
Baird Middle	277	121	43.7%
Bullard Talent K-8	175	63	36.0%
Cambridge High	220	--	--
Design Science High	108	58	53.7%
Dewolf High	170	--	--
Duncan Polytech High	512	102	19.9%
eLearn Academy	546	42	7.7%
Fulton School	3	--	--
JE Young Academic High	296	30	10.1%
Patino Entrepreneurship High	39	11	28.2%
Phoenix Elementary	8	--	--
Phoenix Secondary	24	--	--

*Student groups with a sample size of less than 11 are not reported out in alignment with CDE guidelines

*For students to have Met/Exceeded standard, that had to have scored a Level 3 or 4

*DFSM: Distance from Standard Met; averaged scale score points by group

2022 California Science Test (CAST) Results: Proficiency by Student Group

Student Group	CAST		
	Count Test Takers	Standard Met/Exceeded	
		N	%
District	16689	2738	16.4%
English Learner	2620	34	1.3%
Foster Youth	142	--	--
Homeless	114	--	--
Socioeconomically Disadvantaged	13926	1898	13.6%
Student w/ Disability	1812	94	5.2%
African American/Black	1227	91	7.4%
Asian	1702	371	21.8%
Filipino	57	23	40.4%
Hispanic	11648	1636	14.0%
Native American/Alaskan	84	14	16.7%
Pacific Islander	69	12	17.4%
Two or More Races	484	98	20.2%
White	1416	493	34.8%
Unknown	2	--	--

*Student groups with a sample size of less than 11 are not reported out in alignment with CDE guidelines

*For students to have Met/Exceeded standard, that had to have scored a Level 3 or 4

*DFSM: Distance from Standard Met; averaged scale score points by group

**2022 California Science Test (CAST) Results: Proficiency
by Grade Level**

Grade Level	CAST		
	Count Test Takers	Standard Met/Exceeded	
		N	%
District	16689	2738	16.4%
5th Grade	5383	953	17.7%
8th Grade	5094	717	14.1%
10th Grade	1	--	--
11th Grade	3499	608	17.4%
12th Grade	2712	460	17.0%

*Student groups with a sample size of less than 11 are not reported out in alignment with CDE guidelines

*For students to have Met/Exceeded standard, that had to have scored a Level 3 or 4

*DFSM: Distance from Standard Met; averaged scale score points by group

2021 and 2022 Summative ELPAC Results: Well-Developed (Score 4) by School and Region

School	ELPAC 2020-21			ELPAC 2021-22		
	Count Test Takers	Level 4		Count Test Takers	Level 4	
		N	%		N	%
District	12082	811	6.7%	13063	1201	9.2%
Bullard Region	557	62	11.1%	617	80	13.0%
Bullard High	61	--	--	108	17	15.7%
Figarden Elementary	31	--	--	45	--	--
Forkner Elementary	9	--	--	6	--	--
Gibson Elementary	39	--	--	41	--	--
Kratt Elementary	81	13	16.0%	70	--	--
Lawless Elementary	31	--	--	18	--	--
Malloch Elementary	74	--	--	69	--	--
Powers-Ginsburg Elementary	75	--	--	72	--	--
Slater Elementary	5	--	--	9	--	--
Starr Elementary	14	--	--	17	--	--
Tenaya Middle	35	--	--	44	--	--
Wawona Middle	102	--	--	118	--	--
Edison Region	1502	94	6.3%	1610	107	6.6%
Addams Elementary	269	14	5.2%	294	11	3.7%
Columbia Elementary	173	--	--	187	11	5.9%
Computech Middle	2	--	--	9	--	--
Edison High	267	23	8.6%	278	16	5.8%
Gaston Middle	227	20	8.8%	244	17	7.0%
King Elementary	138	12	8.7%	154	--	--
Kirk Elementary	149	--	--	148	11	7.4%
Lincoln Elementary	181	--	--	176	--	--
Manchester Gate Elementary	4	--	--	16	--	--
Sunset Elementary	92	--	--	104	13	12.5%
Fresno Region	1230	74	6.0%	1264	113	8.9%
Cooper Middle	68	15	22.1%	67	--	--
Del Mar Elementary	111	--	--	96	--	--
Fort Miller Middle	112	--	--	126	--	--
Fremont Elementary	110	--	--	114	--	--
Fresno High	223	--	--	252	29	11.5%
Hamilton K-8	87	--	--	74	18	24.3%

School	ELPAC 2020-21			ELPAC 2021-22		
	Count Test Takers	Level 4		Count Test Takers	Level 4	
		N	%		N	%
Heaton Elementary	63	--	--	64	--	--
Homan Elementary	106	--	--	95	--	--
Muir Elementary	43	--	--	44	--	--
Roeding Elementary	113	--	--	131	--	--
Williams Elementary	98	--	--	98	--	--
Wilson Elementary	96	--	--	103	--	--
Hoover Region	1000	93	9.3%	1027	104	10.1%
Ahwahnee Middle	55	--	--	58	--	--
Centennial Elementary	170	--	--	178	18	10.1%
Eaton Elementary	26	--	--	23	--	--
Holland Elementary	52	--	--	59	--	--
Hoover High	116	11	9.5%	175	11	6.3%
McCardle Elementary	60	--	--	54	--	--
Pyle Elementary	105	--	--	97	--	--
Robinson Elementary	42	--	--	50	--	--
Thomas Elementary	93	--	--	84	--	--
Tioga Middle	107	19	17.8%	93	20	21.5%
Viking Elementary	69	--	--	51	--	--
Vinland Elementary	60	--	--	63	--	--
Wolters Elementary	45	--	--	42	--	--
McLane Region	2664	143	5.4%	2603	217	8.3%
Birney Elementary	181	--	--	180	14	7.8%
Ericson Elementary	141	--	--	148	15	10.1%
Ewing Elementary	233	19	8.2%	207	30	14.5%
Hidalgo Elementary	301	--	--	286	15	5.2%
Leavenworth Elementary	250	13	5.2%	268	23	8.6%
Mayfair Elementary	232	--	--	214	8	3.7%
McLane High	395	22	5.6%	375	17	4.5%
Norseman Elementary	162	--	--	137	15	10.9%
Rowell Elementary	224	12	5.4%	238	18	7.6%
Scandinavian Middle	149	--	--	150	25	16.7%
Turner Elementary	120	--	--	129	11	8.5%
Wishon Elementary	88	--	--	85	--	--

School	ELPAC 2020-21			ELPAC 2021-22		
	Count Test Takers	Level 4		Count Test Takers	Level 4	
		N	%		N	%
Yosemite Middle	188	18	9.6%	186	23	12.4%
Roosevelt Region	2704	151	5.6%	2670	242	9.1%
Anthony Elementary	99	--	--	94	--	--
Balderas Elementary	189	11	5.8%	188	--	--
Calwa Elementary	249	--	--	243	17	7.0%
Jackson Elementary	122	--	--	117	--	--
Jefferson Elementary	160	--	--	143	13	9.1%
Lane Elementary	187	12	6.4%	199	25	12.6%
Lowell Elementary	116	--	--	112	--	--
Roosevelt High	448	22	4.9%	419	24	5.7%
Sequoia Middle	252	23	9.1%	249	25	10.0%
Tehipite Middle	77	--	--	132	11	8.3%
Vang Pao Elementary	310	21	6.8%	280	43	15.4%
Webster Elementary	82	--	--	89	--	--
Winchell Elementary	277	14	5.1%	264	28	10.6%
Yokomi Elementary	136	--	--	141	17	12.1%
Sunnyside Region	2078	147	7.1%	2326	253	10.9%
Ayer Elementary	140	--	--	154	12	7.8%
Aynesworth Elementary	241	11	4.6%	229	16	7.0%
Bakman Elementary	163	11	6.7%	159	23	14.5%
Burroughs Elementary	285	--	--	284	21	7.4%
Easterby Elementary	171	13	7.6%	159	15	9.4%
Greenberg Elementary	125	--	--	120	--	--
Kings Canyon Middle	222	27	12.2%	227	34	15.0%
Olmos Elementary	265	13	4.9%	257	36	14.0%
Storey Elementary	193	30	15.5%	174	34	19.5%
Sunnyside High	138	--	--	428	46	10.7%
Terronez Middle	135	14	10.4%	135	--	--
Specialty Region	347	47	13.5%	946	85	9.0%
Addicott School	16	--	--	0	--	--
Baird Middle	16	--	--	12	--	--
Bullard Talent K-8	22	--	--	25	--	--
Cambridge High	100	--	--	115	--	--

School	ELPAC 2020-21			ELPAC 2021-22		
	Count Test Takers	Level 4		Count Test Takers	Level 4	
		N	%		N	%
Design Science High	2	--	--	1	--	--
Dewolf High	25	--	--	24	--	--
Duncan Polytech High	113	22	19.5%	125	14	11.2%
eLearn Academy	0	--	--	447	28	6.3%
Fulton School	5	--	--	3	--	--
JE Young Academic High	21	--	--	166	24	14.5%
Patino Entrepreneurship High	11	--	--	7	--	--
Phoenix Elementary	5	--	--	8	--	--
Phoenix Secondary	3	--	--	13	--	--
Rata School	8	--	--	0	--	--

*Student groups with a sample size of less than 11 are not reported out in alignment with CDE guidelines

*For students to have met a Well Developed standard, a score of 4 must have been achieved

*ELPAC is a mandated state test for determining English Language Proficiency (ELP). It is also administered as an initial assessment to newly enrolled students who primary language is not English, as indicated on the Home Language Survey, and annually, as a summative assessment to students who have been previously identified as EL students.

2021 and 2022 Summative ELPAC Results: Well-Developed (Score 4) by Student Group

Student Group	ELPAC 2020-21			ELPAC 2021-22		
	Count Test Takers	Level 4		Count Test Takers	Level 4	
		N	%		N	%
District	12082	811	6.7%	13063	1201	9.2%
English Learner	12006	753	6.3%	13062	1201	9.2%
Foster Youth	56	--	--	72	--	--
Homeless	38	--	--	72	--	--
Socioeconomically Disadvantaged	11444	746	6.5%	11928	1071	9.0%
Student w/ Disability	2187	66	3.0%	2215	80	3.6%
African American/Black	11	--	--	16	--	--
Asian	1733	128	7.4%	1789	180	10.1%
Filipino	18	--	--	17	--	--
Hispanic	9929	647	6.5%	10794	969	9.0%
Native American/Alaskan	43	--	--	52	--	--
Pacific Islander	63	--	--	94	13	13.8%
Two or More Races	145	15	10.3%	152	18	11.8%
White	140	16	11.4%	149	--	--

*Student groups with a sample size of less than 11 are not reported out in alignment with CDE guidelines

*For students to have met a Well Developed standard, a score of 4 must have been achieved

*ELPAC is a mandated state test for determining English Language Proficiency (ELP). It is also administered as an initial assessment to newly enrolled students whose primary language is not English, as indicated on the Home Language Survey, and annually, as a summative assessment to students who have been previously identified as EL students.

2021 and 2022 Summative ELPAC Results: Well-Developed (Score 4) by Grade Level

Grade Level	ELPAC 2020-21			ELPAC 2021-22		
	Count Test Takers	Level 4		Count Test Takers	Level 4	
		N	%		N	%
District	12082	811	6.7%	13063	1201	9.2%
Kindergarten	1382	100	7.2%	1719	174	10.1%
1st Grade	1240	43	3.5%	1131	39	3.4%
2nd Grade	1395	70	5.0%	1242	93	7.5%
3rd Grade	1285	64	5.0%	1355	96	7.1%
4th Grade	1071	51	4.8%	1238	143	11.6%
5th Grade	982	60	6.1%	1050	143	13.6%
6th Grade	1087	100	9.2%	942	83	8.8%
7th Grade	940	111	11.8%	1012	119	11.8%
8th Grade	778	79	10.2%	893	107	12.0%
9th Grade	546	28	5.1%	732	43	5.9%
10th Grade	535	42	7.9%	672	70	10.4%
11th Grade	456	28	6.1%	591	46	7.8%
12th Grade	385	35	9.1%	486	45	9.3%

*Student groups with a sample size of less than 11 are not reported out in alignment with CDE guidelines

*For students to have met a Well Developed standard, a score of 4 must have been achieved

*ELPAC is a mandated state test for determining English Language Proficiency (ELP). It is also administered as an initial assessment to newly enrolled students who primary language is not English, as indicated on the Home Language Survey, and annually, as a summative assessment to students who have been previously identified as EL students.

2022 Summative Alternate ELPAC Results: Fluent (Score 3) by Region and School

School	Alternate ELPAC		
	Count Test Takers	Level 3	
		N	%
District	201	33	16.4%
Bullard Region*	5	--	--
Figarden Elementary	1	--	--
Powers-Ginsburg Elementary	2	--	--
Tatarian Elementary	1	--	--
Tenaya Middle	1	--	--
Edison Region*	23	--	--
Columbia Elementary	4	--	--
Edison High	7	--	--
Gaston Middle	6	--	--
Kirk Elementary	6	--	--
Fresno Region*	15	--	--
Fresno High	5	--	--
Hamilton K-8	6	--	--
Heaton Elementary	2	--	--
Muir Elementary	2	--	--
Hoover Region*	25	--	--
Ahwahnee Middle	3	--	--
Eaton Elementary	6	--	--
Holland Elementary	4	--	--
Hoover High	2	--	--
Pyle Elementary	3	--	--
Robinson Elementary	6	--	--
Thomas Elementary	1	--	--
McLane Region*	46	--	--
Ericson Elementary	2	--	--
Ewing Elementary	3	--	--
Hidalgo Elementary	8	--	--
McLane High	21	--	--
Norseman Elementary	1	--	--
Scandinavian Middle	4	--	--

School	Alternate ELPAC		
	Count Test Takers	Level 3	
		N	%
Wishon Elementary	7	--	--
Roosevelt Region*	41	--	--
Anthony Elementary	1	--	--
Jefferson Elementary	10	--	--
Lane Elementary	7	--	--
Roosevelt High	14	--	--
Sequoia Middle	6	--	--
Tehipite Middle	3	--	--
Sunnyside Region*	32	--	--
Ayer Elementary	3	--	--
Greenberg Elementary	5	--	--
Storey Elementary	4	--	--
Sunnyside High	12	--	--
Terronez Middle	8	--	--
Specialty Region*	14	--	--
Addicott School	8	--	--
Baird Middle	1	--	--
Rata School	5	--	--

*Student groups with a sample size of less than 11 are not reported out in alignment with CDE guidelines

*For students to have met a Fluent standard, a score of 3 must have been achieved

*The Alternate English Language Proficiency Assessment for California (ELPAC) is an annual assessment to measure the progress towards English Language Proficiency (ELP) of an English learner student with the most significant cognitive disabilities.

2022 Summative Alternate ELPAC Results: Fluent (Score 3) by Student Group

Student Group	Alternate ELPAC		
	Count Test Takers	Level 3	
		N	%
District	201	33	16.4%
English Learner*	201	33	16.4%
Foster Youth*	2	--	--
Homeless*	0	--	--
Socioeconomically Disadvantaged	181	28	15.5%
Student w/ Disability*	201	33	16.4%
African American/Black*	0	--	--
Asian *	34	--	--
Filipino*	0	--	--
Hispanic	156	26	16.7%
Native American/Alaskan*	0	--	--
Pacific Islander *	2	--	--
Two or More Races*	7	--	--
White	2	--	--

*Student groups with a sample size of less than 11 are not reported out in alignment with CDE guidelines

*For students to have met a Fluent standard, a score of 3 must have been achieved

*The Alternate English Language Proficiency Assessment for California (ELPAC) is an annual assessment to measure the progress towards English Language Proficiency (ELP) of an English learner student with the most significant cognitive disabilities.

2022 Summative Alternate ELPAC Results: Fluent (Score 3) by Grade Level

Grade Level	Alternate ELPAC		
	Count Test Takers	Level 3	
		N	%
District	201	33	16.4%
Kindergarten	16	--	--
1st Grade	12	--	--
2nd Grade	18	--	--
3rd Grade*	14	--	--
4th Grade	13	--	--
5th Grade*	12	--	--
6th Grade*	15	--	--
7th Grade*	19	--	--
8th Grade	16	--	--
9th Grade*	20	--	--
10th Grade*	16	--	--
11th Grade*	17	--	--
12th Grade*	13	--	--

*Student groups with a sample size of less than 11 are not reported out in alignment with CDE guidelines

*For students to have met a Fluent standard, a score of 3 must have been achieved

*The Alternate English Language Proficiency Assessment for California (ELPAC) is an annual assessment to measure the progress towards English Language Proficiency (ELP) of an English learner student with the most significant cognitive disabilities.