

SECRET



IMAGERY
ANALYSIS
DIVISION

PIR

PHOTOGRAPHIC INTELLIGENCE REPORT

VITAL RECORDS COPY
ASSESSMENT OF BOMB DAMAGE

ALONG THE HANOI -

VINH RAIL LINE

Declass Review by NGA

CIA/PIR 65012

DATE August 1965

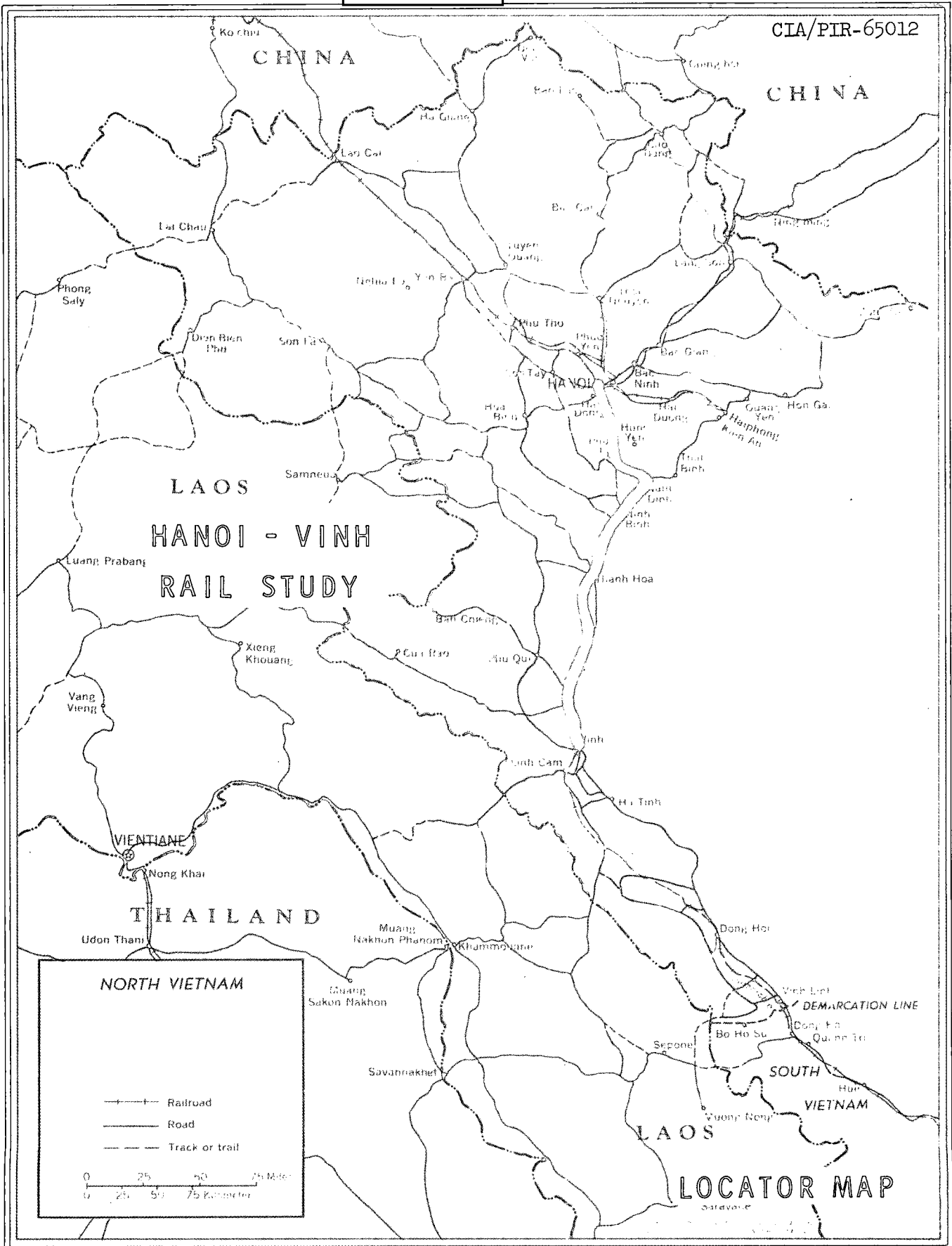
GROUP 1
Excluded from automatic
downgrading and declassification

SECRET

SECRET

Approved For Release 2004/07/07 : CIA-RDP78T05161A000500010055-4

CIA/PIR-65012



51330 4-65

Approved For Release 2004/07/07 : CIA-RDP78T05161A000500010055-4

SECRET

~~SECRET~~

CIA/PIR-65012

25X

CIA IMAGERY ANALYSIS DIVISION

ASSESSMENT OF BOMB DAMAGE ALONG
THE HANOI - VINH RAIL LINE

This report is based on an analysis of recent aerial photography in an effort to determine the extent of bomb damage to the Hanoi - Vinh Rail Line and also to determine the compensative action (if any) taken by the North Vietnamese in an attempt to rehabilitate their railroads.

Photography used in preparing this report are the latest good quality [redacted] available, and were flown on the [redacted]

25X

Bomb damaged facilities described herein are annotated on the enclosed maps (Figures 1 through 5) and selected examples are illustrated by the enclosed annotated photographs (Figures 6 through 9). Facilities annotated on the enclosed maps are in the same numerical sequence in the text of this report. Details are as follows:

1. No recent good quality photographic coverage.
2. Rail line serviceable. No apparent damage to yards or bridges.
3. Ninh Binh combination rail and highway bridge 20 15N - 105 59E is unserviceable, one span dropped. No evidence of repair. A ferry crossing currently under construction is located immediately west of the bridge. (See Photo No. 1)
4. Bien Son rail yard 20 03N - 105 51E was damaged, several bomb craters are apparent in the yard. No apparent attempt was made to repair this yard.
5. Dong Phong Thuong combination rail and highway bridge 19 59N - 105 50E is unserviceable, two spans were dropped and one damaged, there was no evidence of any attempt to repair. A ferry site, under construction, is located immediately east of the bridge. (See Photo No. 2)
6. Than Hoa combination rail and highway bridge 19 50N - 105 47 is serviceable to truck traffic and possible serviceable to rail traffic. Damaged approaches to the bridge have been repaired. A ferry site is located immediately east of the bridge.

- 1 -

~~SECRET~~

25X

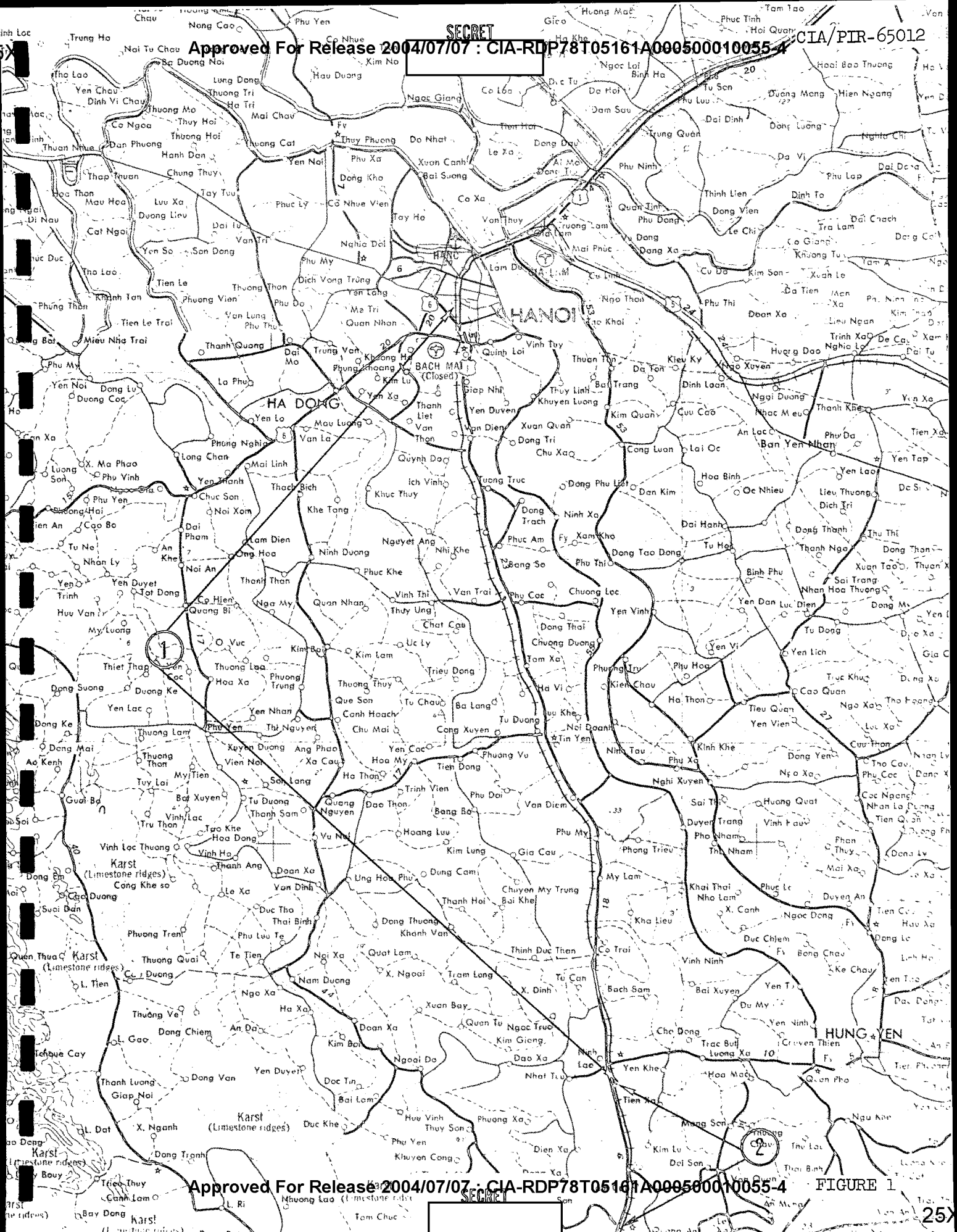
CIA IMAGERY ANALYSIS DIVISION

7. 19 39N - 105 42E rail line interdicted on the north approach to a small bridge. There was no evidence of any attempt to repair the rail line.
8. Thuong Quang rail bridge 19 37N - 105 42E was heavily damaged. There was no evidence of any attempt to repair the bridge. A possible ferry site under construction is located immediately west of the bridge.
9. 19 32N - 105 42E rail interdicted on both approaches of a small bridge. A ferry crossing under construction is located immediately west of the bridge.
10. Nhan My rail yard 19 26N - 105 45E is heavily damaged. Rail interdicted at several points. There are ten pieces of damaged rolling stock abandoned in the yard. No evidence of any attempt to repair.
11. Dong Ky rail bridge 19 21N - 105 43E was heavily damaged. The southernmost span appears to be dislocated, and the southern approach is also interdicted. No evidence of any attempt to repair the bridge. No ferry crossing located at this site.
12. Qui Vinh rail bridge 19 15N - 105 41E has the two northernmost spans dropped. The northern approach was heavily damaged. There was no evidence of any attempt to repair the rail line; however, a possible temporary rail bridge is being constructed immediately east of the destroyed bridge and a possible by-pass line is under construction in this area. (See Photo No. 3)
13. Dien Chau rail bridge 18 58N - 105 34E was heavily damaged. There was no evidence of any attempt to repair the bridge. No ferry crossing in this area.
14. Tam Da combination rail and highway bridge 18 50N - 105 39E was heavily damaged. The rail was interdicted on both approaches and there was no evidence of any attempt to repair the rail line. A ferry crossing is located immediately west of the bridge.
15. Vinh rail yards NW 18 40N - 105 39E were heavily damaged. There are several bomb craters presently in the yard. There was no evidence of any attempt to repair the yards. There are 62 pieces of rolling stock on the main line immediately north of the yards. (See Photo No. 4)

SECRET

Approved For Release 2004/07/07 : CIA-RDP78T05161A000500010055-4

CIA/PIR-65012



Approved For Release 2004/07/07 : CIA-RDP78T05161A000500010055-4

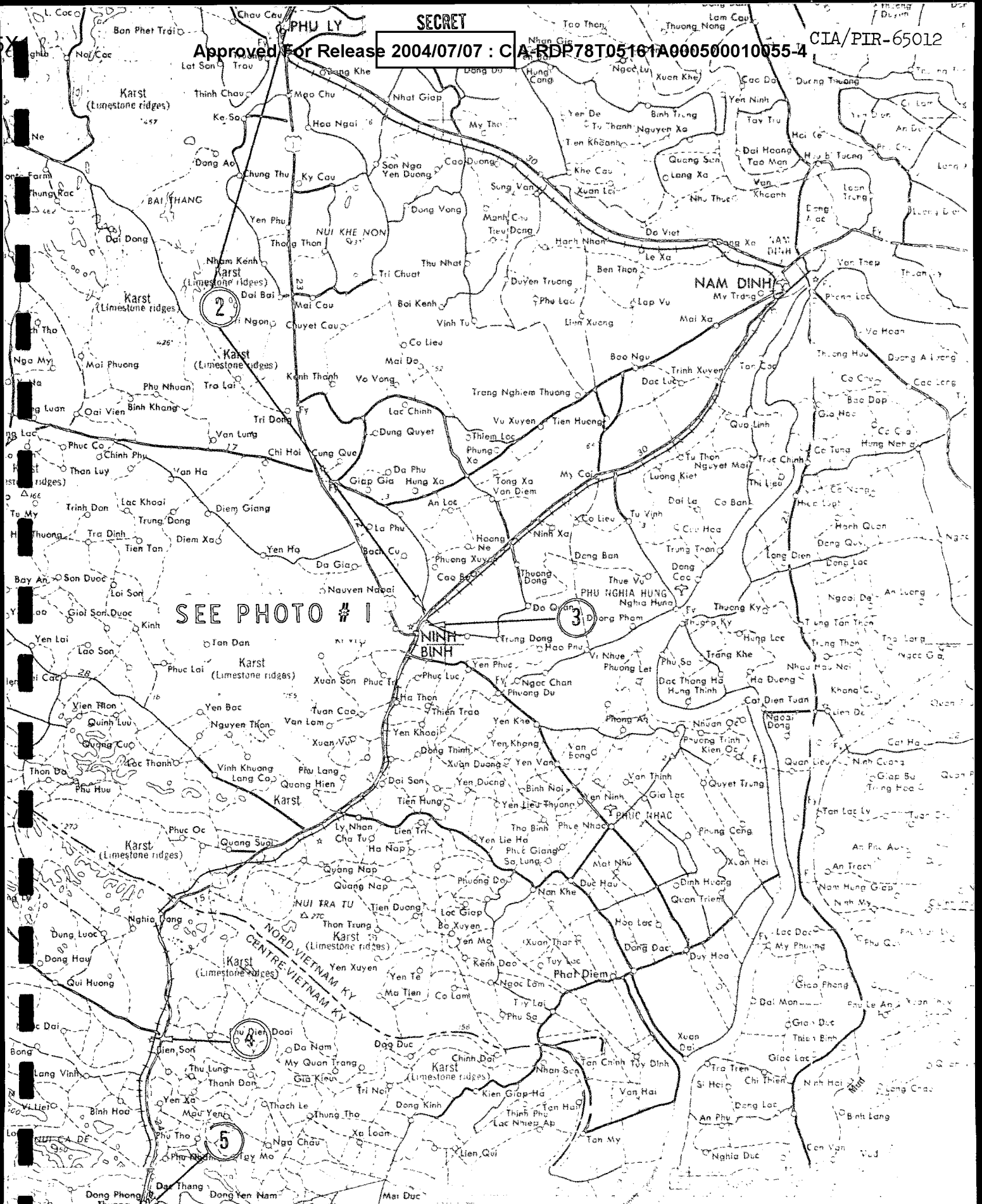
FIGURE 1

SECRET

SECRET

CIA/PIR-65012

Approved For Release 2004/07/07 : CIA-RDP78T05161A000500010055-4



SEE PHOTO # 1

SEE PHOTO # 2

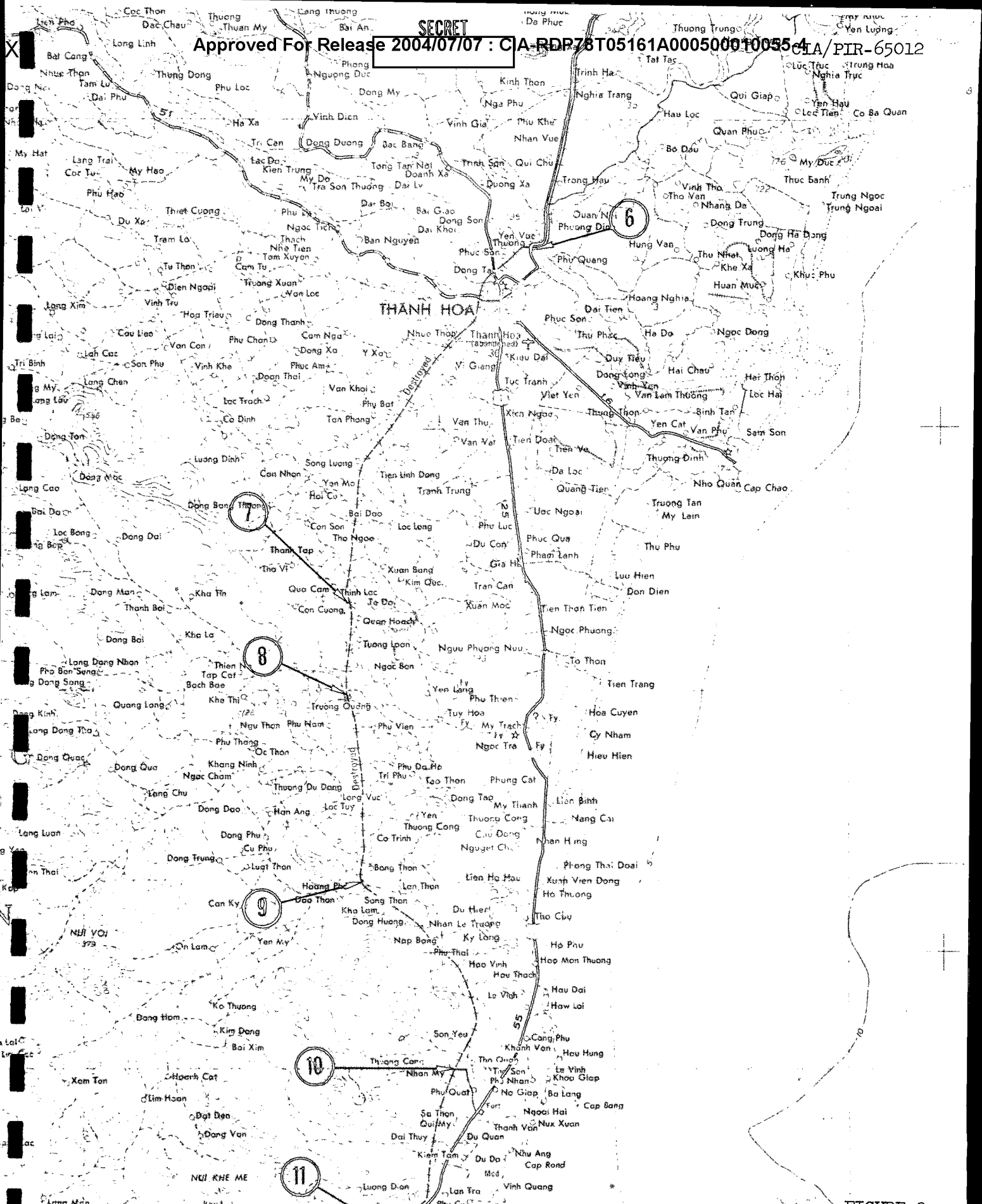
Approved For Release 2004/07/07 : CIA-RDP78T05161A000500010055-4

SECRET

FIGURE 2

SECRET

Approved For Release 2004/07/07 : CIA-RDP78T05161A000500010055-4 CIA/PIR-65012



THÀNH HOÁ

Approved For Release 2004/07/07 : CIA-RDP78T05161A000500010055-4

SECRET

FIGURE 3

5X1

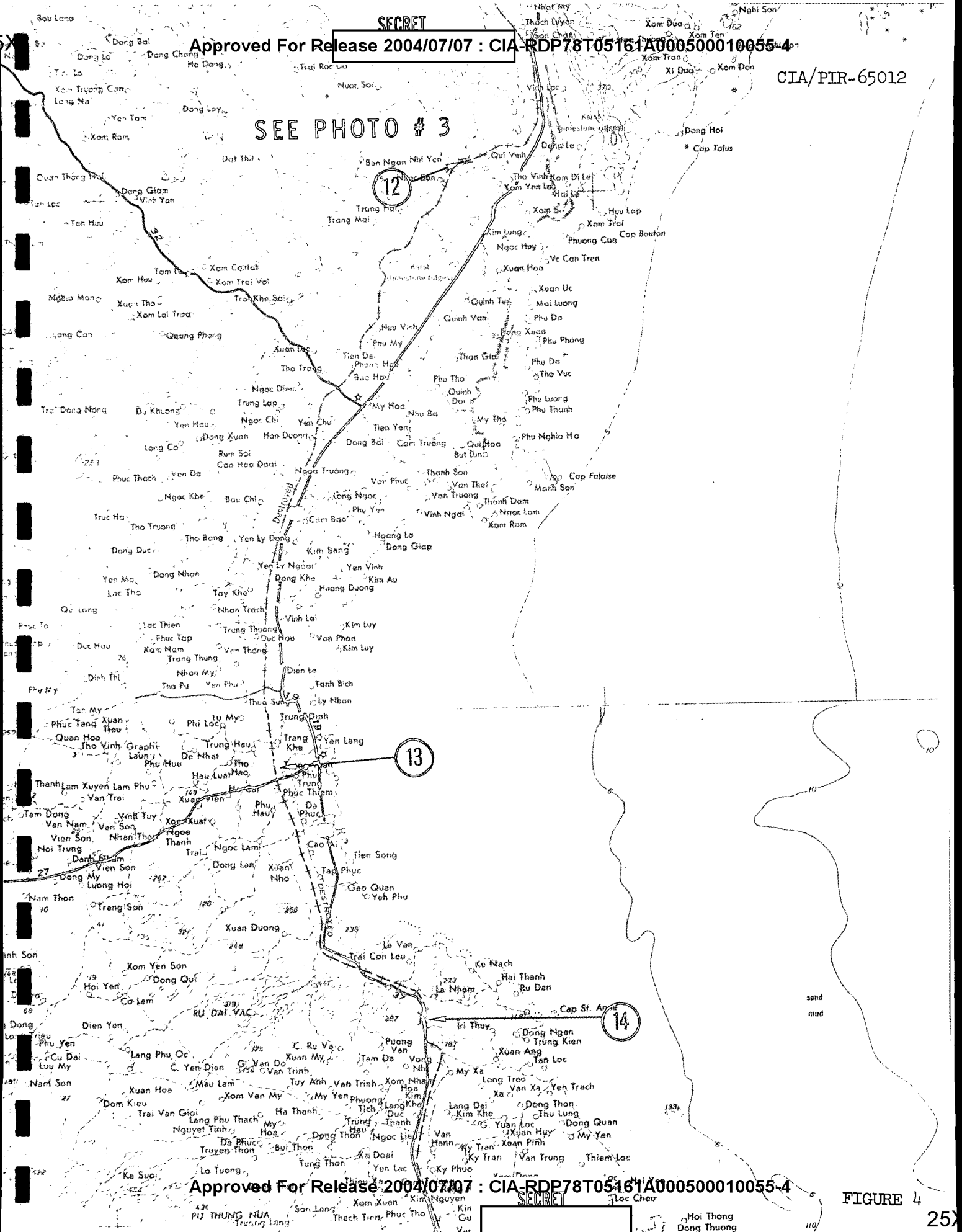
Hon Coc
Hon Vat

SECRET

Approved For Release 2004/07/07 : CIA-RDP78T05161A000500010055-4

CIA/PIR-65012

SEE PHOTO # 3



Approved For Release 2004/07/07 : CIA-RDP78T05161A000500010055-4

SECRET

FIGURE 4

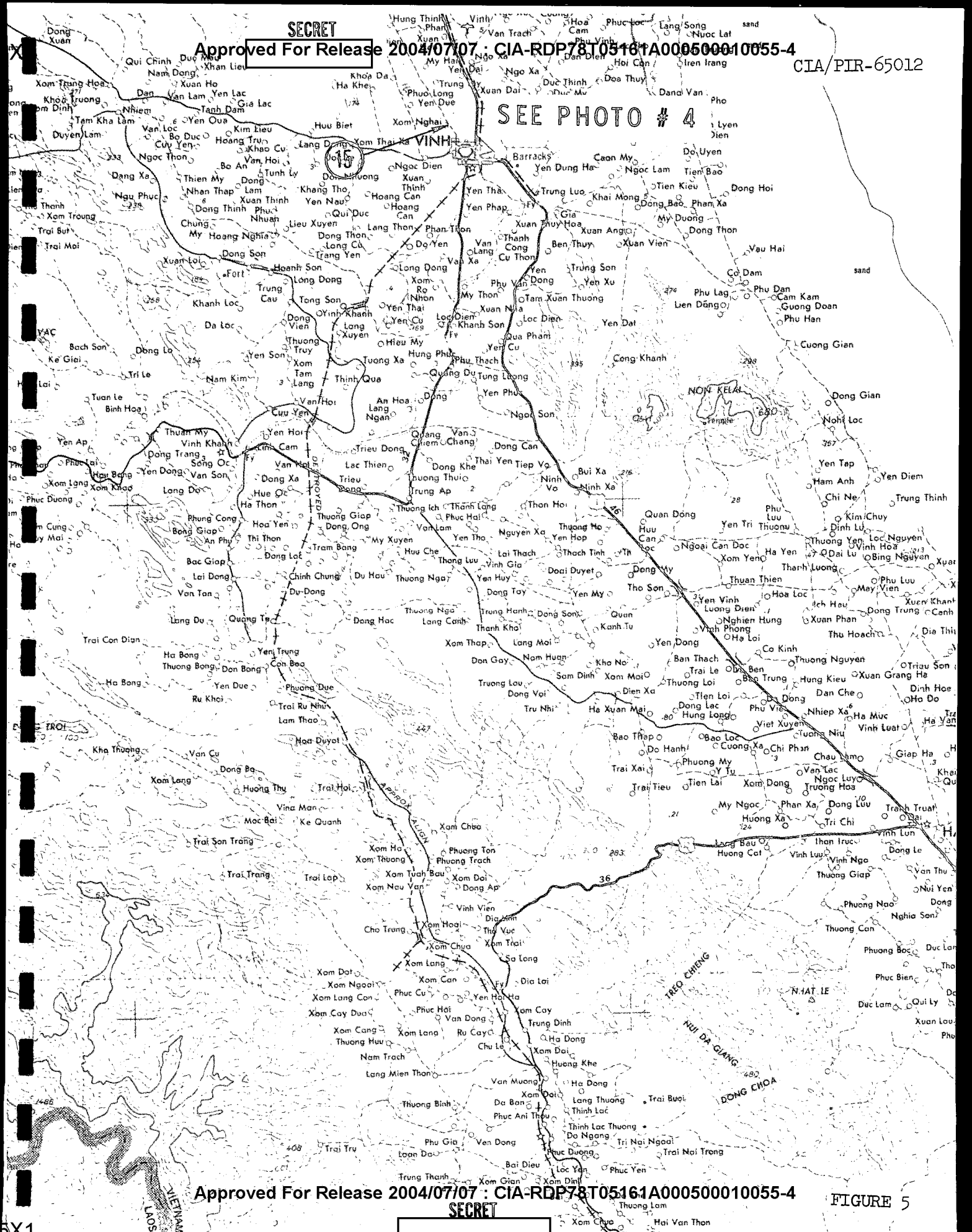
25

SECRET

Approved For Release 2004/07/07 : CIA-RDP78T05161A000500010055-4

CIA/PIR-65012

SEE PHOTO # 4



Approved For Release 2004/07/07 : CIA-RDP78T05161A000500010055-4

SECRET

FIGURE 5

5X1

CIA/PIR-65012

25

ROUTE 10

DROPPED SPAN

FERRY SITE U/C

NINH BINH ROAD
& RAILROAD BRIDGE
2015 N 10559 E

PHOTO # 1

FIGURE 6

25

5X1

SECRET

CIA/PIR-65012

FERRY SITE U/C

DROPPED SPAN

PHOTO # 2

DONG PHONG THUONG
ROAD & RAILROAD BRIDGE
1959 N 10550 E

FIGURE 7

SECRET



BRIDGE U/C

TEMPORARY
BY-PASS LINE

POSSIBLE BY-PASS

RAIL LINE U/C

DROPPED SPAN

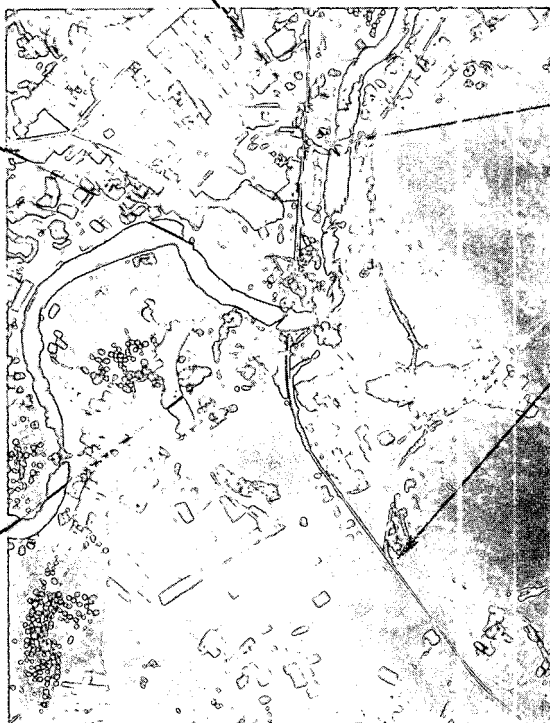


PHOTO # 3

QUI VINH RAILROAD BRIDGE

1915 N 10541 E



SECRET

CIA/PIR-65012

DAMAGED CARS

LINE INTERDICTION

PHOTO # 4

VINH RAIL YARDS N.W.
1840 N 10539 E

FIGURE 3

~~SECRET~~



CIA/PIR-65012

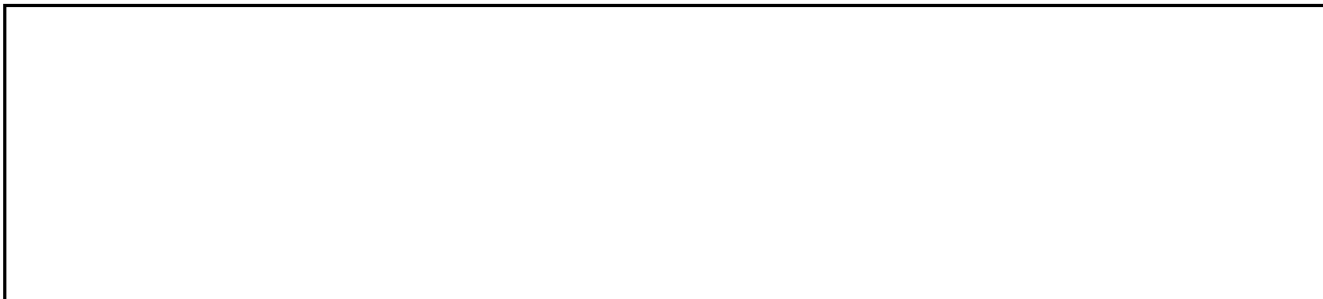
25X

CIA IMAGERY ANALYSIS DIVISION

REFERENCES

PHOTOGRAPHY

Mission



25X

MAPS OR CHARTS

- CIA Base Map 51330 4-65 (UNCLASSIFIED)
- AMS Series L509 Sheet NE 48-3 1:250,000 Ed 2, 10-62 (UNCLASSIFIED)
- AMS Series L509 Sheet NE 48-7 1:250,000 Ed 2, 10-62 (UNCLASSIFIED)
- AMS Series L509 Sheet NF 48-11 1:250,000 Ed 2, 12-63 (UNCLASSIFIED)
- AMS Series L509 Sheet NF 48-15 1:250,000 Ed 2, 12-63 (UNCLASSIFIED)

REQUIREMENT

CIA. C-RR5-82,782 (B)

CIA/IAD PROJECT

30076-6

~~SECRET~~



25X

25X1

Approved For Release 2004/07/07 : CIA-RDP78T05161A000500010055-4

Approved For Release 2004/07/07 : CIA-RDP78T05161A000500010055-4