

Geo Analysis & MAP

Start

Map all 911 calls in Beat 38 that contained the key word “gun”

1

Create a Filter (Helpers → Filter)

- Name it “Training” or something descriptive
- Object Type = Calls for Service
- Property = Beat Number
- Beat value = 38
- Keywords = gun

2

Click “Add to Graph” – your Filter search results will be displayed on the GRAPH

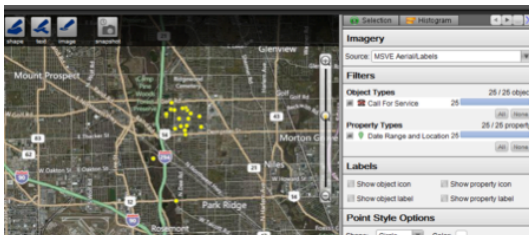
3

With all events selected, click and drag them to the MAP icon in the applications bar



4

With all events selected, click and drag them to the MAP icon in the applications bar, then zoom in by rolling your mouse wheel

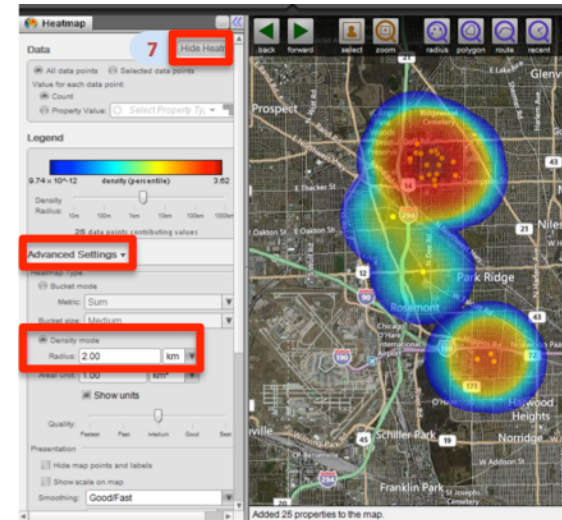


5

Click Helpers → Heatmap

6

- Click Advanced Settings
- Density Mode
- Radius = 2.00 km
- Wait for the heatmap to load



7

Click Hide Heatmap at the top to toggle the heatmap on / off

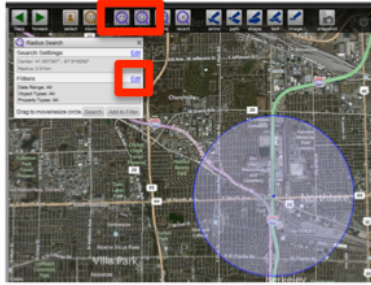
Geo Analysis & MAP

Start

Find all arrests in a given area over a set period of time

1

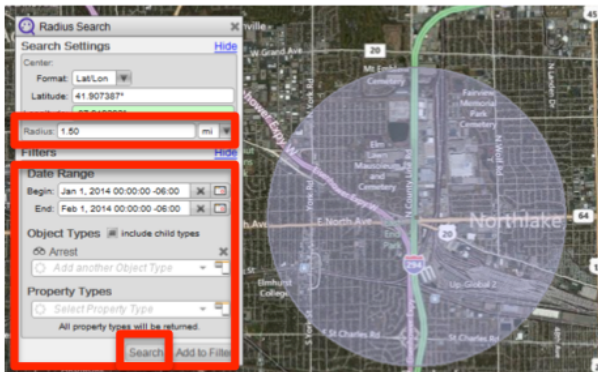
On the MAP application, zoom in on the desired area. Then click the radius button, click on the map and draw your search radius. Then click the lower [Edit](#)



2

On the expanded menu:

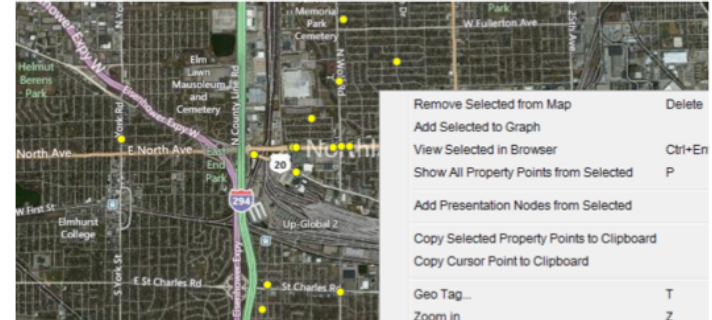
- Refine your search radius
- Enter a date range
- Enter an object type you're searching for (like "Arrest", or "CCSO Arrest")
- Hit "Search" and wait for the search to load



3

Right click the search results and select "Add Selected to Graph"

Move to the GRAPH application to further investigate your search results



4

Feeling adventurous? Try a **polygon** or **route** search!

