

I-5: AURORA-DONALD INTERCHANGE PROJECT (Exit 278)

Project Type: Modernization

Presenters: Anna Henson (ODOT),
Ed Chamberland (DEA)

HB 2017 Project

Key #s: 22505 and 19062

MWACT Briefing

January 6, 2022

Agenda

1. Progress to date
2. Phasing changes
3. Stakeholder outreach
4. Next steps



Progress to Date

1. Completed alternatives analysis → Diverging Diamond Interchange (DDI)
2. Completed environmental documentation (approved by FHWA)
3. Completed Interchange Area Management Plan (approved by Marion County and OTC)
4. Phase 1A construction begins January 2022



Phase 1A

- Realign Bents Road
- Construct traffic signal and new intersections
- Lengthen/widen northbound off-ramp
- Construct sound wall and retaining walls by RV Park
- Addresses immediate safety and operational problems
- K&E Excavating awarded \$8.8M contract (same contractor as OR551 Elhen Road)
- 2022 Construction (one year project)
- NTP this month!



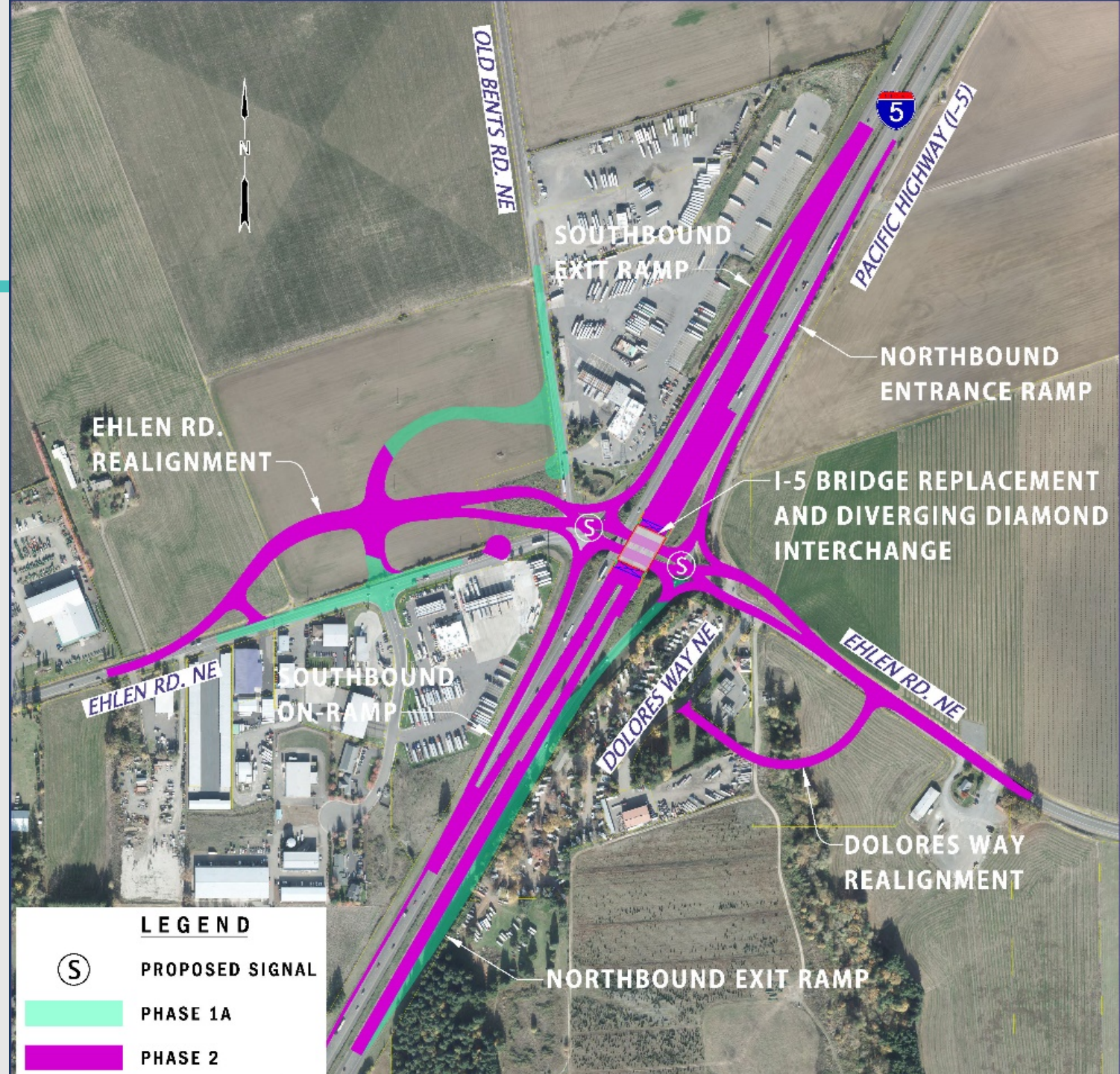
Phase 1B

- Replace the I-5 bridges over Ehlen Road
- Reconstruct I-5 to match the new bridge
- Construct a tight diamond interchange with new traffic signals
- Lengthen and widen the southbound exit ramp
- 10-year solution
- 2023-2024 construction (two year project)



Phase 2

- Replace the I-5 bridges over Ehlen Road
- Reconstruct I-5 to match the new bridge
- Construct a diverging diamond interchange with new traffic signals
- Lengthen and widen the southbound exit ramp and both entrance ramps
- Relocate Dolores Way connection to the east
- 20-year+ solution
- 2023-2025 construction (three year project)



Stakeholder Outreach

- MWACT
- Marion County briefing
- City of Aurora and City of Donald
- Property owners
- Project website update
- Other opportunities as they arise



Next steps

- Created a new key number K22505 for the next phase
- Continue to buy R/W for the next phase
- Update stakeholders (county, cities, property owners)
- Confirm funding plan for next phase
- Final design for next phase
- Construct Phase 1A



I-5: AURORA-DONALD INTERCHANGE PROJECT

QUESTIONS