

TONGA

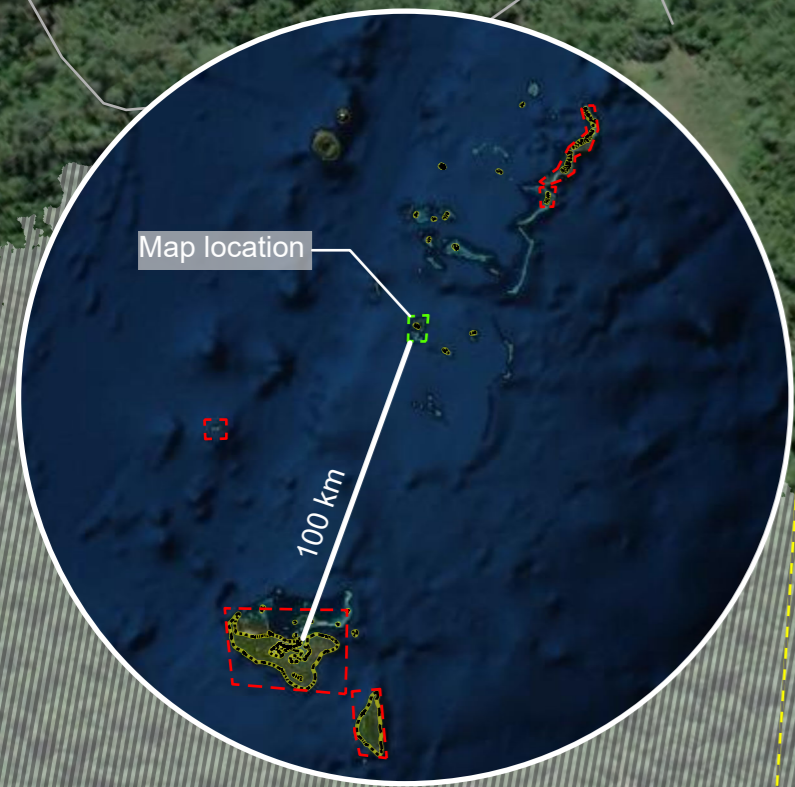
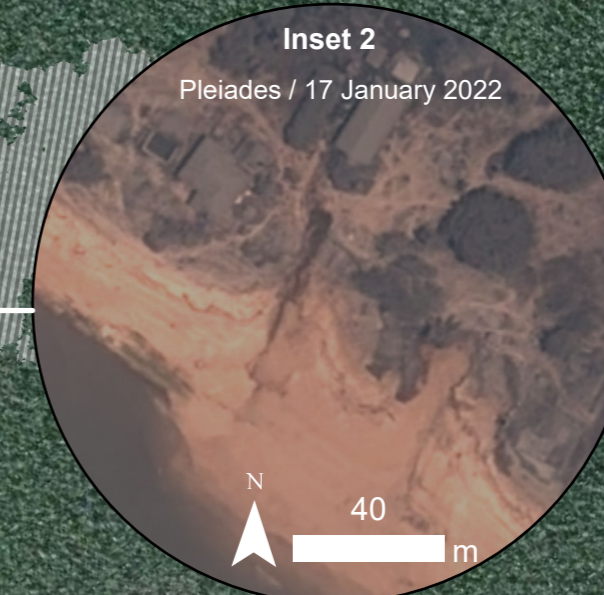
NOMUKA VILLAGE, MU'OMU'A DISTRICT, HA'APAI DIVISION

IMAGERY ANALYSIS: 17/01/2022 PUBLISHED 17/01/2022 V1



VOLCANO
VO20220115TON

ANALYZED AREA: 56km²
 DAMAGED STRUCTURES: 41
 ASH COVERED STRUCTURES: 63
 NO VISIBLE STRUCTURES: 138



Damage assessment in Nomuka village, Mu'omu'a district, Ha'apai division Nomuka Island, as of 17 January 2022

This map illustrates effects of the Hunga Tonga-hunga Ha'apai volcanic eruption in Nomuka island (Mu'omu'a district, Tonga) and damage assessment as detected from a Pleiades image acquired on 17 January 2022, 10:53 local time. In this island we identified ~250 structures. 104 structures were analyzed in the cloud-free area and 41 structures were identified as damaged and almost all the structures were covered with ash. This is a preliminary analysis and has not yet been validated in the field. Please send ground feedback to UNITAR-UNOSAT.

- Legend**
- Damaged structure
 - Ash covered structure
 - No visible structure
 - Village
 - Tertiary road
 - Other road
 - Village boundary
 - ▨ Cloud obstruction [17 Jan. 2022]

Spatial Reference: Name: WGS 1984 UTM Zone 1S, PCS: WGS 1984 UTM Zone 1S, GCS: GCS WGS 1984, Datum: WGS 1984
 Satellite Data (Post-event): Pleiades, Imagery Date: 16 Dec. 2021, 21:53 UTC, Resolution: 50 cm, Copyright: CNES (2021), distribution Airbus D&S, Source: Airbus DS
 Satellite Data (Pre-event): ESRI World Imagery, Boundary data: OCHA, Road data: OpenStreetMap, Populated place: OpenStreetMap, Building footprint: OpenStreetMap
 Analysis: United Nations Satellite Centre (UNOSAT), Production: United Nations Satellite Centre (UNOSAT)
 Map Scale for A3: 1:4,000
 0 25 50 100 Meters