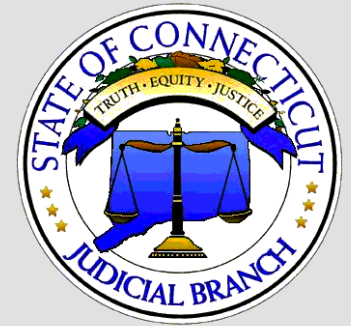
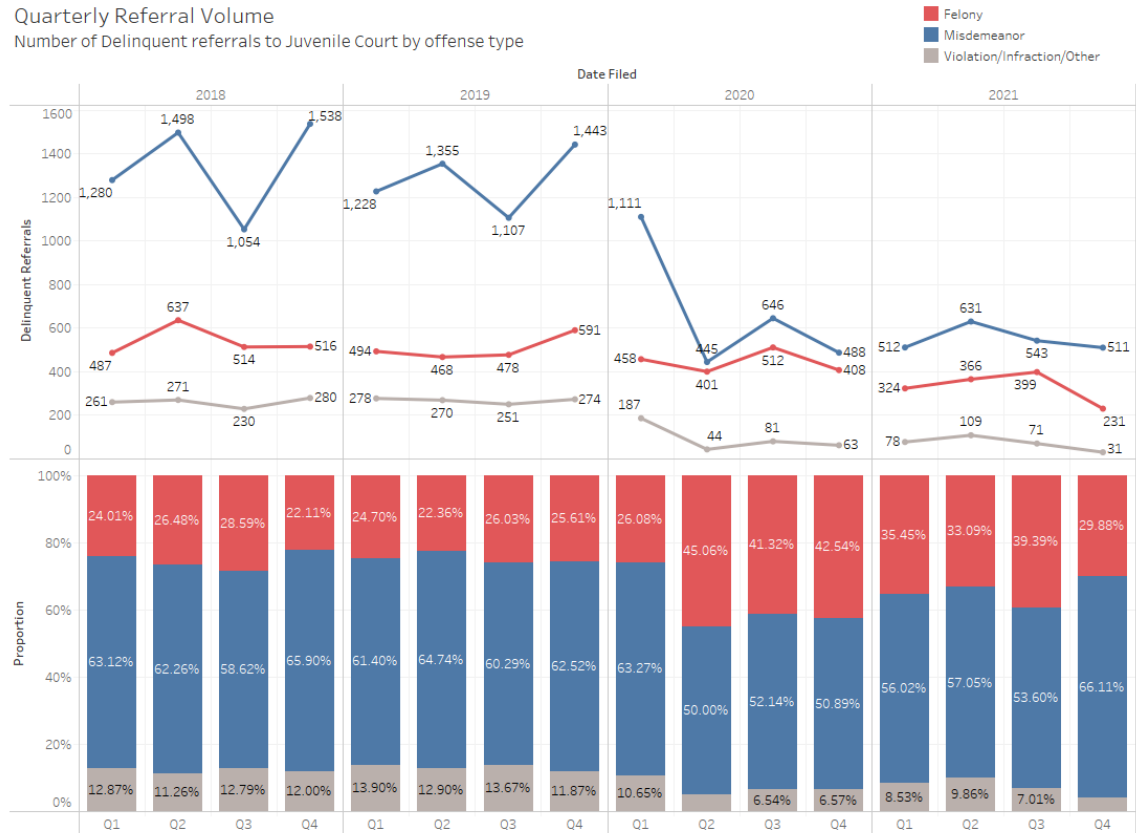


# Trends in Juvenile Court Volume and Timeframes



## Delinquency Referrals

There are many fewer misdemeanor charges being filed in juvenile court than in years past. Felony filings are down in 2021 as well.



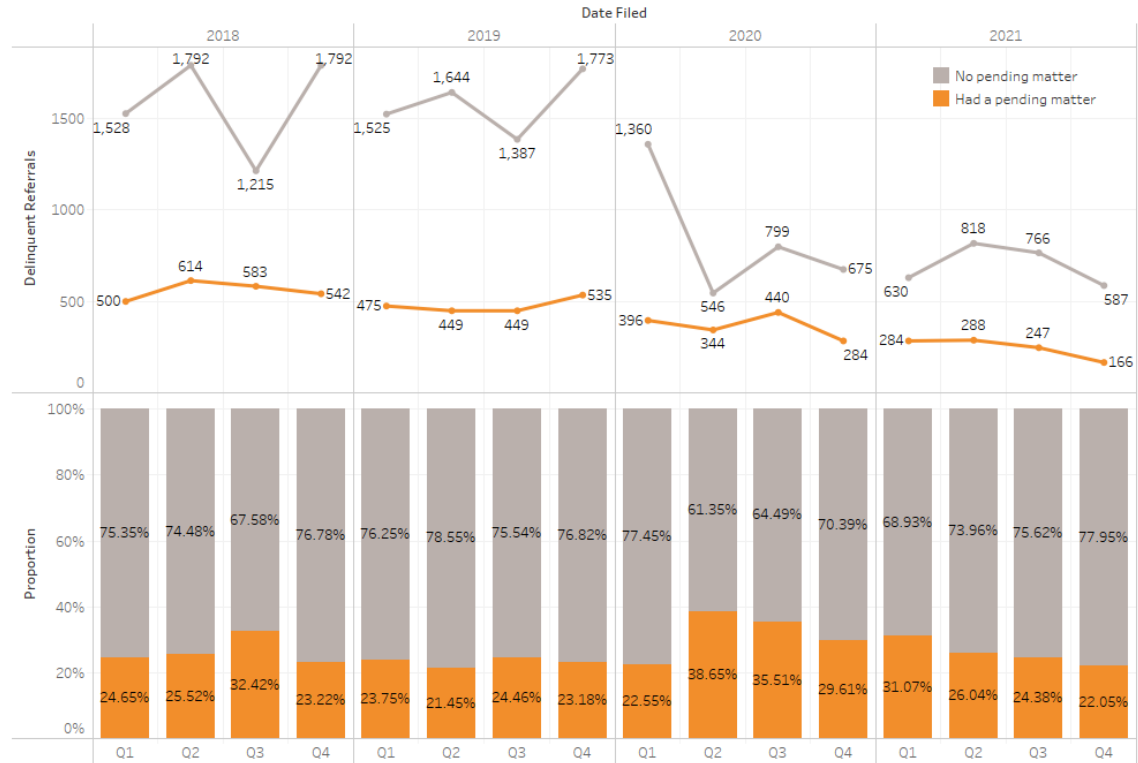
Source: CMIS

## New delinquency referrals with pending cases

Approximately 75% of new delinquency referrals do not have a pending case at the time of filing.

### New Referrals with Pending Matters

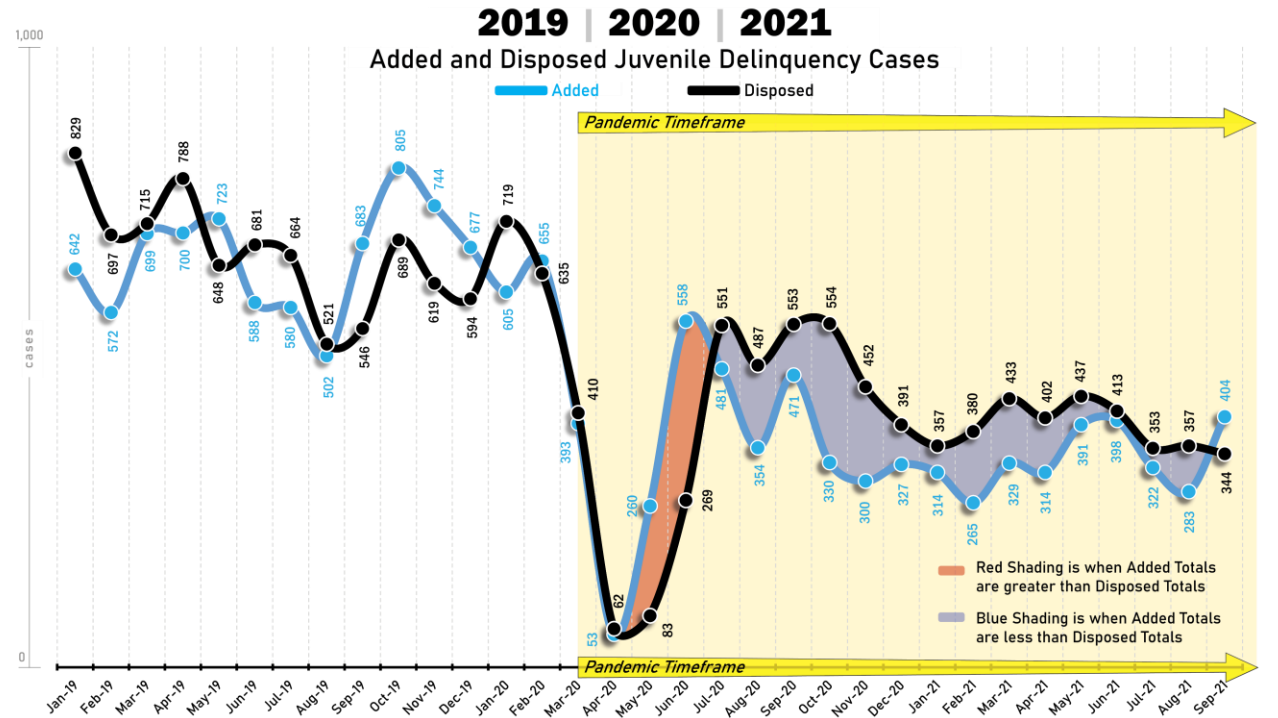
How many children already have a matter pending when they are referred to Court? This chart displays the number and proportion of delinquency referrals by quarter, based on the existence of a prior pending matter.



Source: CMIS

## Court Operations: Added and Disposed Juvenile Delinquency Cases

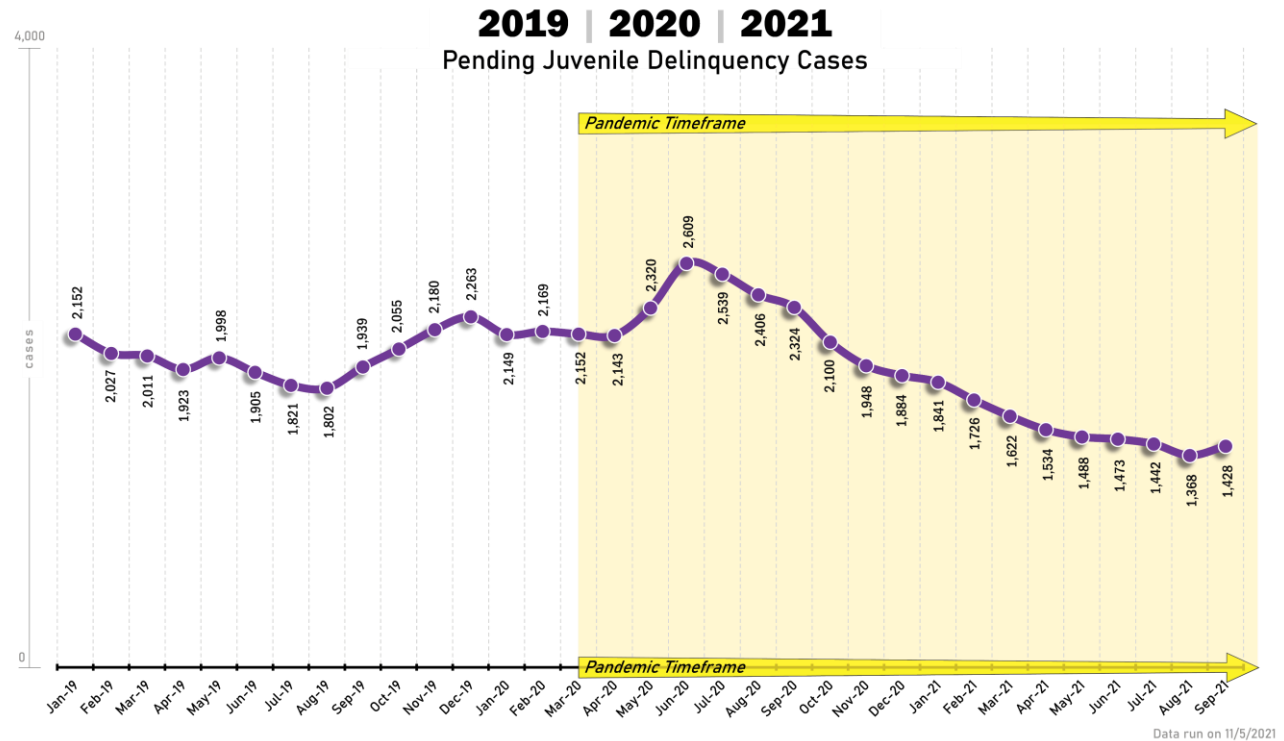
In July 2020 the Branch began to dispose of more cases than were being added each month. The rate at which cases are now being disposed exceeds the rate at which new cases are coming into the system.



Data run on 11/5/2021

## Court Operations: Pending Juvenile Delinquency Cases

Currently, there are fewer pending cases in Juvenile Court than there were pre-pandemic.



## Motor vehicle theft and firearm arrests

This chart depicts the number of motor vehicle theft and firearm arrests per month by juvenile court location.

### Monthly Firearm/MVT Arrests

Looks at the number of referrals to Juvenile Court for firearms-related offenses (identified by charge statute) and Motor Vehicle Theft-related offenses (identified by Supervising JPO).

Court	2019												Date Filed 2020												2021										
	January	February	March	April	May	June	July	August	September	October	November	December	January	February	March	April	May	June	July	August	September	October	November	December	January	February	March	April	May	June	July	August	September	October	November
Bridgeport	27	11	22	12	14	14	12	23	22	27	14	23	16	18	11	17	37	24	34	10	23	17	12	14	14	12	10	15	24	10	15	17	10	8	11
Hartford	10	25	15	12	9	13	14	19	21	21	22	30	26	12	3	11	18	17	15	15	35	12	17	26	9	22	4	11	14	5	12	16	6	10	2
Middletown	10	7	1	6	9	5	5		1	2	5			5	1			9	3	2	1		3	1	1		3	1	2	4	5	1	1	3	1
New Britain	11	3	4	14	7	1	6	8	5	11	6	1	1	3	4	3	3	17	6	13	14	13	9	12	7	2	7	5	9	5	11	3	16	11	6
New Haven	28	16	33	8	18	18	15	14	20	24	28	37	29	27	20	11	14	42	25	32	33	20	25	24	35	18	27	15	25	17	34	18	30	19	27
Rockville	6	1	3	5	1	4	5	4	6		6	4	2	1	1		7	5	1	2	3	2	2	10	4	3	3	9	5	9	3	3	4	2	1
Stamford	6	3	1	3	1			3	1	4	2	5	7	2		3	2		2	3	3	1		4	3		1	7	5	3	3	3	4	6	
Torrington	1		1	1		1	1	1	1	1	11	1	4	2	3			4	1		1			4	1	1	2	2	1	3	1		2	2	1
Waterbury	11	12	15	10	14	11	13	15	20	4	11	9	6	11	12	12	8	25	2	18	15	7	1	14	15	10	11	12	16	19	9	13	20	14	6
Waterford	2	9	1	2	2		3	5	6	5	4	5	4	7	1			2	4	1	2	1	2			2	3	1	3	1	5	3	1		2
Willimantic	2	2	2	1	2	3	2	3		1	4	3	3				2	2	2	1	4	1	2			2			1	1					
Grand Total	114	89	98	74	77	70	76	95	103	100	113	118	98	88	56	57	91	147	95	97	134	74	73	109	89	72	71	78	104	77	99	77	94	75	57

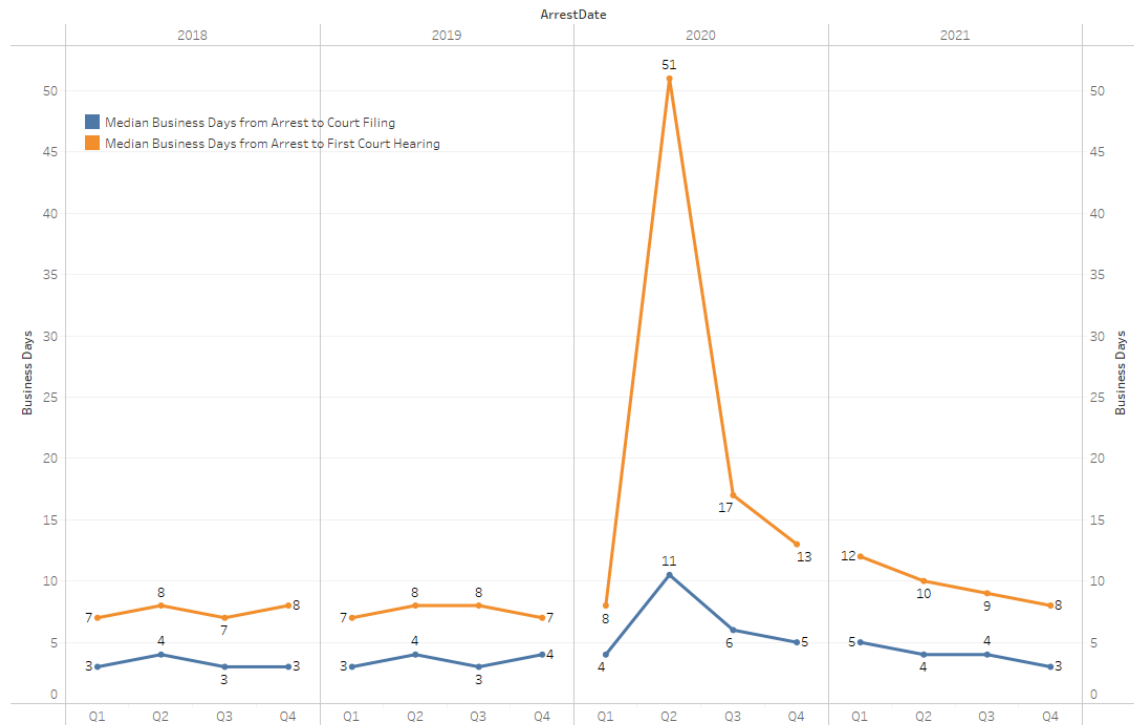
Source: CMIS

## Case processing timeframes

This graph displays that case processing, from the time of arrest to filing and first court appearance are consistent with pre-pandemic timeframes. New procedures are currently being implemented to further reduce the number of days from arrest to first court appearance.

### Timeframes: Arrest, Filing, and First Court Date

Once a child is arrested, police must file the summons with the Court prior to the first court appearance. This chart shows the median business days between arrest and a first court appearance, as well as the median number of business days between arrest and the filing of the summons.



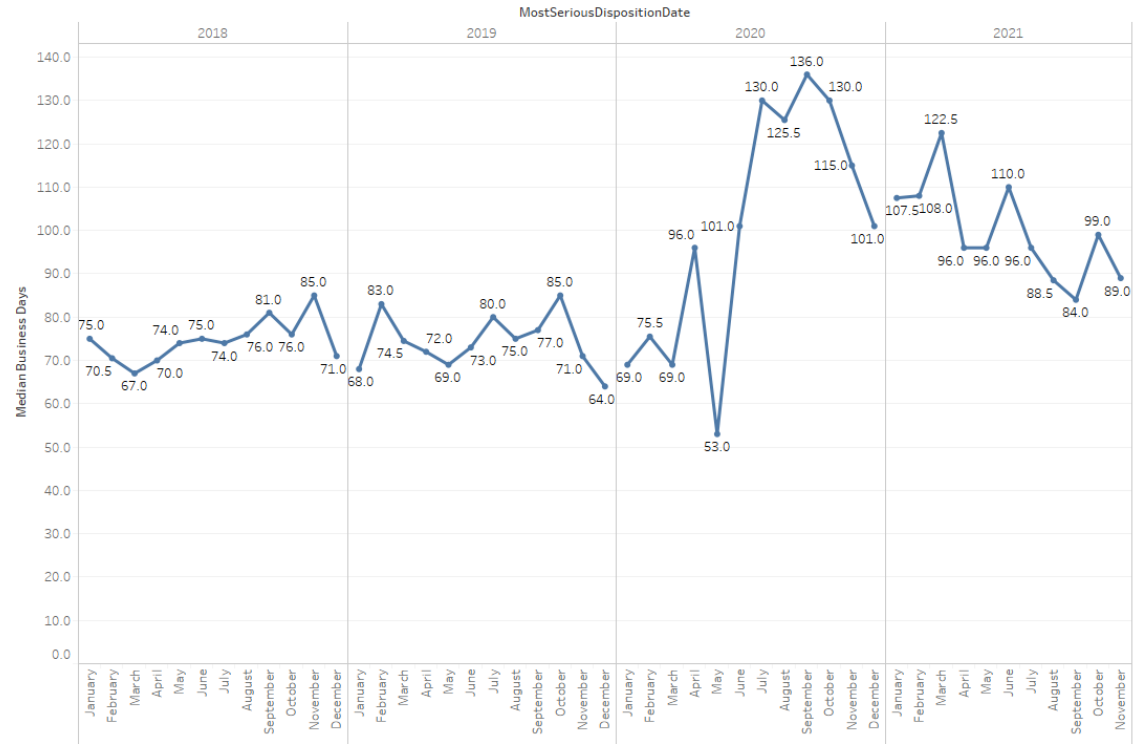
Source: CMIS

## Case processing timeframes

Case processing timeframes from filing to disposition are approaching pre-pandemic levels.

### Timeframes: Filing to Disposition

How long do delinquency referrals take to dispose? This chart plots the median number of business days between court filing and disposition of delinquency matters.



Source: CMIS