



West Anchorage Snow Disposal

Site Selection Study



February 2021





Executive Summary

The Municipality of Anchorage (MOA) has identified the need for a long-term, reliable solution to snow disposal for West Anchorage. This site selection study summarizes the process to identify a new snow disposal site, public involvement, site options, site screening criteria, and the reasoning behind the proposed site selection.

The snow disposal site that currently serves West Anchorage is located on land owned by the State of Alaska and managed by the Ted Stevens Anchorage International Airport (TSAIA). Snow storage needs often surpass site storage capabilities. Options to increase capacity at the existing site are limited and site improvements are necessary to meet current water quality standards. In order to make these improvements, MOA and PM&E need a long-term solution for snow storage in this area and a cost-effective alternative to the current ad hoc lease arrangement. This studies goal is to find a site that the Municipality can own, and where development and investment in state-of-the-art water treatment will pay off in perpetuity.

Three initial criteria were set for selection of a new snow disposal site based on research of existing MOA snow disposal sites, published regulatory legislation, guidance documents, and conversations with managers and operators at the Maintenance and Operations (M&O) and Project Management and Engineering (PM&E) Departments. The initial criteria were:

- A minimum of 10 acres of unused land, and ideally at least 15 acres;
- Located within the West Anchorage Snow Disposal Service Area; and
- Located on undeveloped, vacant land.

Nineteen sites within the West Anchorage Snow Disposal Area were found to meet these three basic criteria. Once these sites were identified, the following criteria were used to narrow the possible sites to those feasible for snow disposal:

- Located to allow 24-hours-a-day, 7-days-a-week (24/7) operation;
- Zoned in an area that will allow snow disposal;
- Provides site access along larger collector or arterial roads; and
- Available for long-term lease, purchase, or otherwise available for permanent use.

In addition to the initial site selection criteria, the following additional factors were considered in the final site selection evaluation:

- Receiving water capacity for snow melt runoff;
- Impacts on neighborhoods and surrounding residential areas;
- Impacts on wetlands;
- Impacts on park lands; and
- Permitting requirements.



After the secondary site evaluation, two primary sites were identified for further examination: Site 5 (Connor's Bog Site), and Site 9 (Strawberry Bog Site).

MOA conducted public outreach to engage, inform, and gather comments from the public about the Connor's Bog and Strawberry Bog sites as well as the site selection process. Comments from the public centered on adhering to zoning to minimize impacts to residential areas, as well as the visual and hydrological impacts of snow disposal.

After analysis of all factors, Site 5: Connor's Bog Site was determined to most closely meet the snow disposal site criteria for the future West Anchorage Snow Disposal location. Analysis findings included:

- The Connor's Bog Site would have minimal impacts on residents and neighbors, while allowing for 24/7 operation. This criterion is the most important aspect required for efficient snow disposal in West Anchorage.
- The estimated additional cost of day-restricted operations is \$240,000 per year over the cost of unrestricted 24/7 operations.
- Both sites meet many of the criteria for selection: adequately sized, available for use, and adequate receiving water for snow melt runoff.
- Both sites are located within Class A wetlands, so an extensive permitting effort is expected.
- In contrast, the Strawberry Bog Site would be located near an existing and growing residential area. Truck routes to the Strawberry Bog Site may have to be routed through residential areas. The proximity to neighborhoods and access routes could require operational restrictions on the Strawberry Bog Site, making it less desirable for snow disposal use.

In conclusion, after detailed site analysis and public feedback, Connor's Bog has been identified as the more ideal snow disposal site.

The Connor's Bog site features minimal impacts to residential areas, operational advantages, suitability for storing snow and handling melt water, and fitness based on other factors. The site will be subject to a stringent permitting process and regulation driven design standards.



Table of Contents

Executive Summary..... i

1. Introduction 1

2. Background..... 3

 2.1 Snow Haul to the Existing Northwood Snow Disposal Site..... 3

 2.2 Neighboring Snow Disposal Sites 4

 2.3 Site Design and Selection Guidance Documents..... 5

 2.4 Site Characteristics and Site Requirements 5

 2.4.1 Site Location 5

 2.4.2 Operational Flexibility 5

 2.4.3 Site Size 6

 2.4.4 Site Zoning and Comprehensive Plan 6

 2.4.5 Site Access..... 6

 2.4.6 Site Availability and Acquisition..... 6

3. Site Selection Process 7

 3.1 Public Outreach Efforts..... 7

 3.2 Potential Site Identification 7

 3.3 Initial Site Evaluation..... 8

 3.4 Secondary Site Evaluation 10

 3.5 Final Site Evaluation..... 13

 3.5.1 Site 5 – Connor’s Bog Site 14

 3.5.2 Site 9 – Strawberry Bog Site 19

4. Site Selection Recommendations 23

Appendices

- Appendix A: Snowfall Records 2004–2020
- Appendix B: Guidance Documents
- Appendix C: Public Outreach Summary
- Appendix D: Initial Site Selection Considerations



List of Figures

Figure 1. West Side Snow Disposal Service Area.....	2
Figure 2. Northwood Site in 2011–2012.....	3
Figure 3. Anchorage Snow Disposal Service Areas	4
Figure 4. Site Selection Process.....	7
Figure 5. Initial Parcels Identified for Consideration.....	8
Figure 6. Final Site Evaluation Results	12
Figure 7. Site 5: Connor's Bog Site Conceptual Design.....	18
Figure 8. Site 9: Strawberry Bog Site Conceptual Design	22

List of Tables

Table 1. Initial Site Evaluation Matrix.....	10
Table 2. Final Site Selection Recommendations Comparison Table.....	24



Acronyms and Abbreviations

24/7	24-hours-a-day, 7-days-a-week
AMC	Anchorage Municipal Code
AWWU	Anchorage Water and Wastewater Utility
CWA	Clean Water Act
DOT&PF	Alaska Department of Transportation and Public Facilities
JD	Jurisdictional Determination
M&O	Maintenance and Operations
MOA	Municipality of Anchorage
PLI	Public Lands and Institutional (zoning)
PM&E	Project Management and Engineering
TR	Transition (zoning)
TSAIA	Ted Stevens Anchorage International Airport

Intentionally left blank.



1. Introduction

The Municipality of Anchorage (MOA) Maintenance and Operations (M&O) Department maintains the majority of the streets in the Anchorage Bowl. A major winter maintenance activity is the removal and disposal of snow from these streets. Snow removed from streets is deposited in one of eight snow disposal sites scattered throughout the city, each serving its adjacent area. The MOA has identified a need to replace the Northwood Snow Disposal Site (Northwood Site) that currently serves the West Anchorage snow service area. The MOA Project Management and Engineering (PM&E) Department is administering the West Anchorage Snow Disposal Project and has contracted with HDR to select a location for, permit, and design a replacement for the Northwood Site. This site selection study identifies and makes recommendations of potential sites that meet M&O's needs for snow disposal.

The Northwood Site is located on State of Alaska-owned land controlled by Ted Stevens Anchorage International Airport (TSAIA) adjacent to the M&O Kloep Station maintenance facility south of International Airport Road on Northwood Drive. The Northwood Site serves most of the western portion of the Anchorage Bowl. Figure 1 shows the boundaries of the West Anchorage Snow Service Area (Service Area) as provided by M&O. M&O is responsible for snow collection on most neighborhood and collector streets within the area shown in red. Larger arterial roads such as Dimond Boulevard, Minnesota Drive, Jewel Lake Road, and International Airport Road are maintained by the State of Alaska Department of Transportation and Public Facilities (DOT&PF). In some years when there is a significant snowfall, Anchorage School District schools may also use the Northwood location for depositing snow.

The MOA currently rents the Northwood Site from TSAIA on a year-to-year basis. Because of increasingly stringent State of Alaska water quality regulations, PM&E has identified a number of improvements to the Northwood Site that are necessary for the long-term operation of the site. In order to make these improvements, the MOA must purchase or negotiate a long-term lease for the property. Unfortunately, the lands containing the Northwood Site are not available to the MOA for permanent use. As of June 2020, MOA PM&E and M&O began the process to identify the best alternative location for snow disposal in West Anchorage. This study is the culmination of that process.

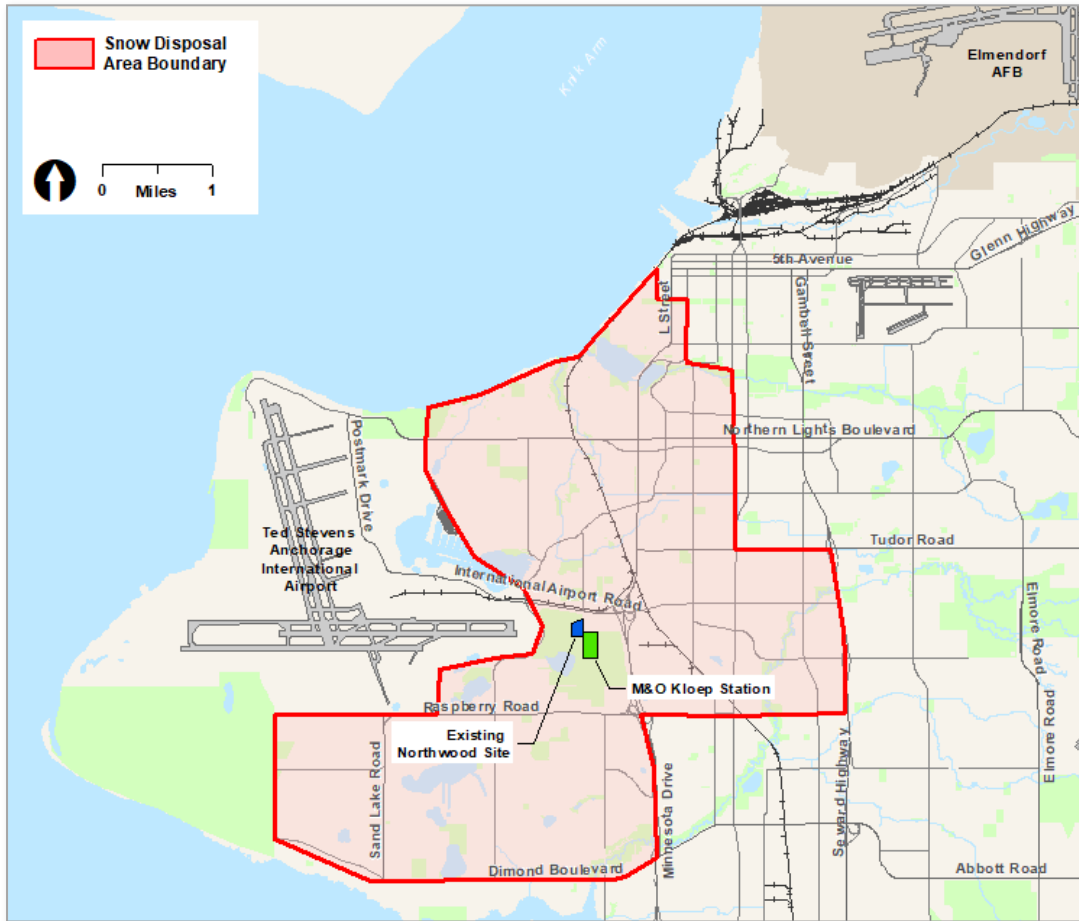


Figure 1. West Side Snow Disposal Service Area



2. Background

To guide the site selection, background information was gathered on the status of existing snow disposal sites in Anchorage, recent snow hauling data from all sites, detailed haul data from the Northwood Site, snowfall records, regulatory and guidance documents, and interviews with M&O and PM&E staff. This information was used to determine the priority site characteristics for a snow disposal site and develop criteria for the conceptual replacement design.

2.1 Snow Haul to the Existing Northwood Snow Disposal Site

The existing Northwood Site contains 9 to 12.5 usable acres depending on TSAIA’s annual alternative needs for the site and the negotiated lease agreement. The West Anchorage service area is 14.4 square miles (Figure 1) and currently accepts approximately 20 percent of the snow gathered from MOA-maintained streets in the Anchorage Bowl. Conversations with M&O staff have indicated that in large snow years 12.5 acres is insufficient for the collection area, and 9 acres is inadequate even in low snow years. During the 2019–2020 snowfall season, with a 9-acre lease and 115 percent of normal snow fall, M&O was forced to truck West Anchorage snow to other sites. This resulted in additional trucking costs and decreased levels of service, which included snow hauling delays and additional snow left on the sides streets and in the middle of cul-de-sacs.

In an average snow year, approximately 10,500 truckloads of snow are brought to the Northwood Site. At the extreme, (2011–2012 had 175 percent of the average snowfall), approximately 18,500 truckloads went to the Northwood Site. The resultant snow pile was 40 feet high, 10 feet higher than the design height limitation dictated by water quality parameters. The result is shown in Figure 2. See Appendix A for snowfall records from 2004 to 2020 and the calculations for snow truckloads delivered to the Northwood Site.



Figure 2. Northwood Site in 2011–2012



2.2 Neighboring Snow Disposal Sites

The Northwood Site service area is bounded on the south and east by five other snow service areas, shown in Figure 3: Commercial Drive, Sitka Street, Tudor Road, Spruce Street, and C Street Site. All of these adjacent sites are already at or near capacity. This means that a loss or reduction in snow disposal capacity in West Anchorage cannot be adsorbed by the adjacent sites. A replacement site for West Anchorage needs to have capacity similar to or greater than the Northwood Site in order to effectively meet West Anchorage’s snow disposal needs.

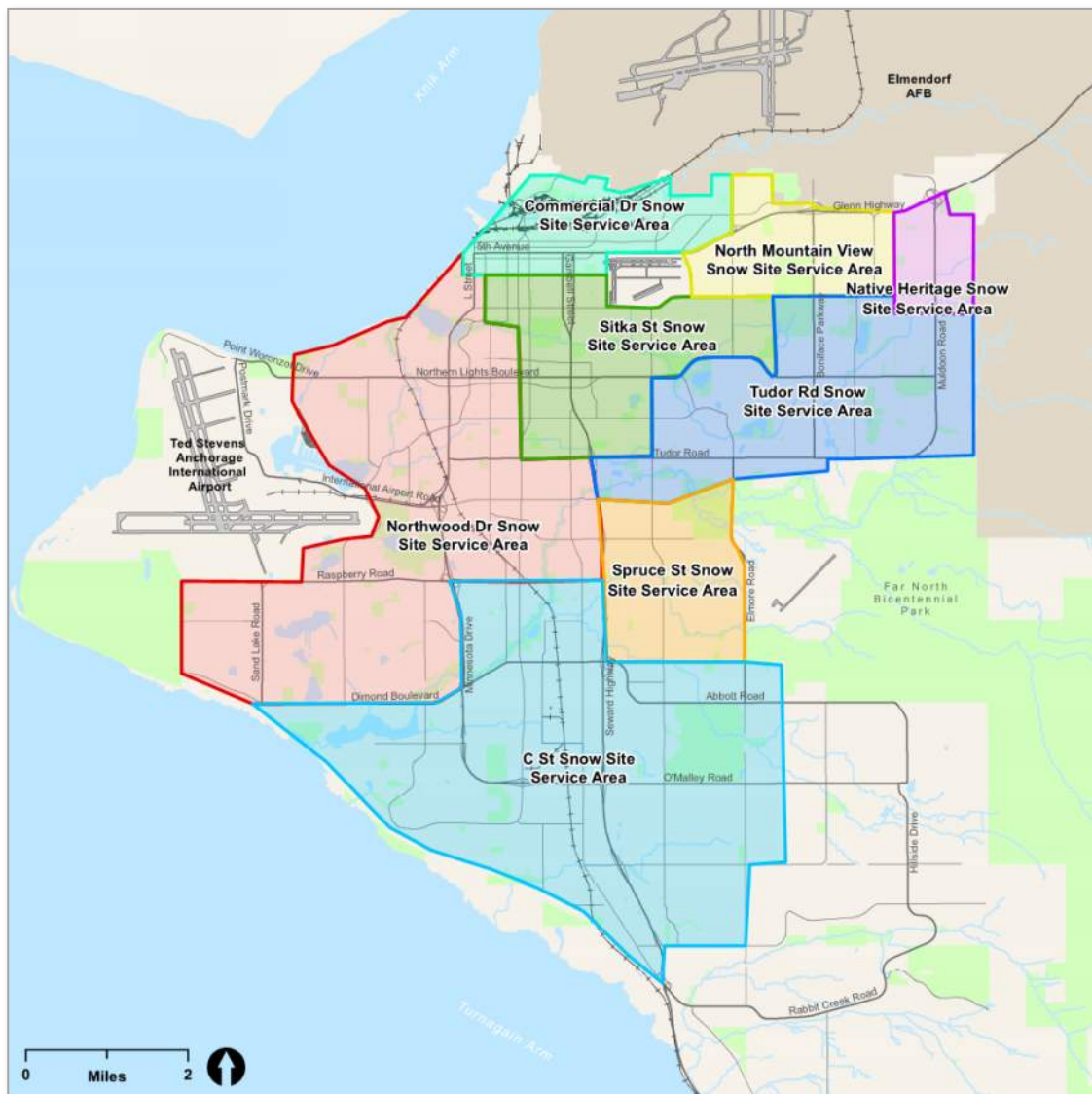


Figure 3. Anchorage Snow Disposal Service Areas



2.3 Site Design and Selection Guidance Documents

Anchorage Municipal Code (AMC) Title 21, Land Use Planning, sets criteria for public facility site selection in general and for snow disposal sites in specific. Section 21.03.140 governs public facility site selection, and snow disposal sites are identified as public facilities in Section 21.03.140B.1.f. Snow disposal site standards are found in Section 21.05.060E.8. New snow disposal sites must conform to these regulations or seek waivers.

In addition to Title 21, snow disposal requirements are governed by the *2017 Anchorage Stormwater Manual* published by the Watershed Management Services. Additional documentation for management of snow disposal can be found in the *Anchorage Street Deicer and Snow Disposal: 2003 Best Management Practices Guidance*, the *2013 Evaluation of Anchorage Snow Disposal Sites*, the *Anchorage Storm Water Treatment in Wetlands: 2001 Progress Report*, and other related publications from the MOA, State of Alaska, and research institutions. These documents guide both the site selection process and the design of snow sites. A list of documents used for reference and guidance in the site selection, design, and conceptual layout, with brief notes on the information provided, is included in Appendix B.

2.4 Site Characteristics and Site Requirements

Important characteristics and site requirements are determined based on population growth expectations, M&O operational needs, public input, regulatory legislation, and guidance documents. The primary guiding characteristics for site selection are location, operational flexibility, size, zoning/comprehensive planning, access, and availability.

2.4.1 Site Location

Based on conversations with PM&E and M&O, and the analysis of adjacent snow disposal sites discussed above, the site should be located within the Service Area. Snow haul to sites outside the service area has a significant impact on efficiency, costs, and level of service.

2.4.2 Operational Flexibility

M&O and PM&E emphasized the importance of 24-hours-a-day, 7-days-a-week (24/7) operations, especially in the West Anchorage Snow Disposal Service Area. Municipal sites with operational restrictions are difficult to use during periods of high snowfall, when night operations are limited because of noise impacts on adjacent neighborhoods. A lack of operational flexibility will hinder M&O's ability to move snow efficiently and is considered a major flaw of any potential new site. Night operations are preferable for hauling snow off main roads, as there is less traffic on the roads. This allows plows, rotaries, and trucks to operate with additional safety and efficiency. Night operations are more efficient for two reasons. The primary reason is the difficulty of closing off traffic to allow the use of rotary and haul equipment in the roadway. The other reason is that heavy day time traffic results in slower haul speeds and longer truck cycle times. Night operations are approximately 50 percent more efficient than daytime operations and many major streets can only be hauled at night. As part of the cost analysis that accompanied the selection process, it was



estimated that a site with day only operations restriction would require the rerouting of 55-60% of haul loads to a location with unrestricted operations. An equivalent number of loads would have to be rerouted from an adjacent snow site during day operations to balance snow storage capacity. The estimated cost of this redistribution of hauled loads is approximately \$240,000 per year. This additional annual cost will have a serious impact on the Municipality's ability to clear snow and maintain transportation function.

2.4.3 Site Size

Based on the analysis of other Anchorage snow disposal sites, a full area replacement for the Northwood Site is desirable. Parcels of at least 15 acres are most desirable. Parcels smaller than 15 acres were considered, if adjacent parcels could be combined to reach a total of 15 acres. The 15-acre size leaves adequate area for access roads, berms, water quality structures, screening, and property line setbacks.

2.4.4 Site Zoning and Comprehensive Plan

The site must have appropriate zoning for a snow disposal site per Title 21. Many zoning districts allow snow disposal use with conditional use permitting or rezoning. Sites zoned for industrial, commercial, and public lands and institutional (PLI) use and transition zoning (TR) are preferred over residentially zoned areas. The Transitional zoning designation was originally applied to undeveloped parcels with unknown planned usage. It carries some flexibility and allow for rezoning once the use is determined. Sites with TR zoning will require rezoning to move to PLI designation and the current Title 21 conditional use approval process. This process must also look at the current West Anchorage Comprehensive Plan and meet or amend the plan as appropriate.

2.4.5 Site Access

Snow disposal generates a large volume of heavy truck traffic. Close access to collector roadways or higher classification is necessary for operation of the site. Lengthy access routes through residential or sound-sensitive areas need to be avoided for public safety and to minimize neighborhood impacts.

2.4.6 Site Availability and Acquisition

Any proposed site must be available for use by the MOA. MOA-owned properties are generally preferable over privately owned sites, as there is no direct site acquisition cost. While MOA-owned sites may also have value for alternative uses, some have lower suitability for other uses that include buildings or other facilities requiring foundations. Sites reserved for future use or with anticipated acquisition issues should be avoided.

3. Site Selection Process

The site selection process used the desired characteristics discussed above to identify possible snow disposal sites in West Anchorage. The first step in the process was to identify large vacant land parcels within the West Anchorage service area. Once an inventory was developed for initial site identification, each was evaluated based on desired characteristics to define the most suitable sites for further analysis. These were then evaluated at a deeper level, and a recommendation was made based on the relative merits and risks of each parcel.

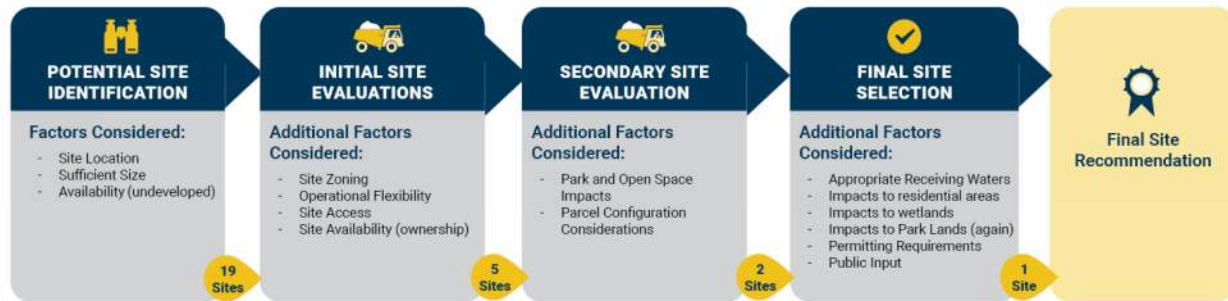


Figure 4. Site Selection Process

3.1 Public Outreach Efforts

The project team used a variety of outreach methods to engage and inform the public regarding the West Anchorage Snow Disposal Project and to obtain feedback on the site selection process. Several opportunities for the public to provide input and feedback were provided as part of the selection process. An online open house with an opportunity to chat live with the project team was held to solicit and identify potential public concerns. Postcards were mailed to residents in the West Anchorage area notifying them of the opportunity to participate in the process. The public submitted comments by phone, email, during Community Council meetings, through the online open house, and during the virtual public meeting. Comments received focused on zoning guidelines and the site’s aesthetic and environmental/hydrological impacts.

The Public Outreach Summary (Appendix C) includes a description of public outreach tools, implemented outreach strategies, outreach results, and comments received. This public input was taken into consideration during the development of site selection criteria and evaluation.

3.2 Potential Site Identification

Possible snow disposal sites were selected using the MOA Geographic Information System database by comparing available, undeveloped parcels within the snow disposal collection area with the site size and location requirements discussed in Section 2.4. A first round of 19 sites met the initial screening criteria. Figure 5 shows the locations and site numbers of these 19 initial sites. A full list of these sites is included in Appendix D.

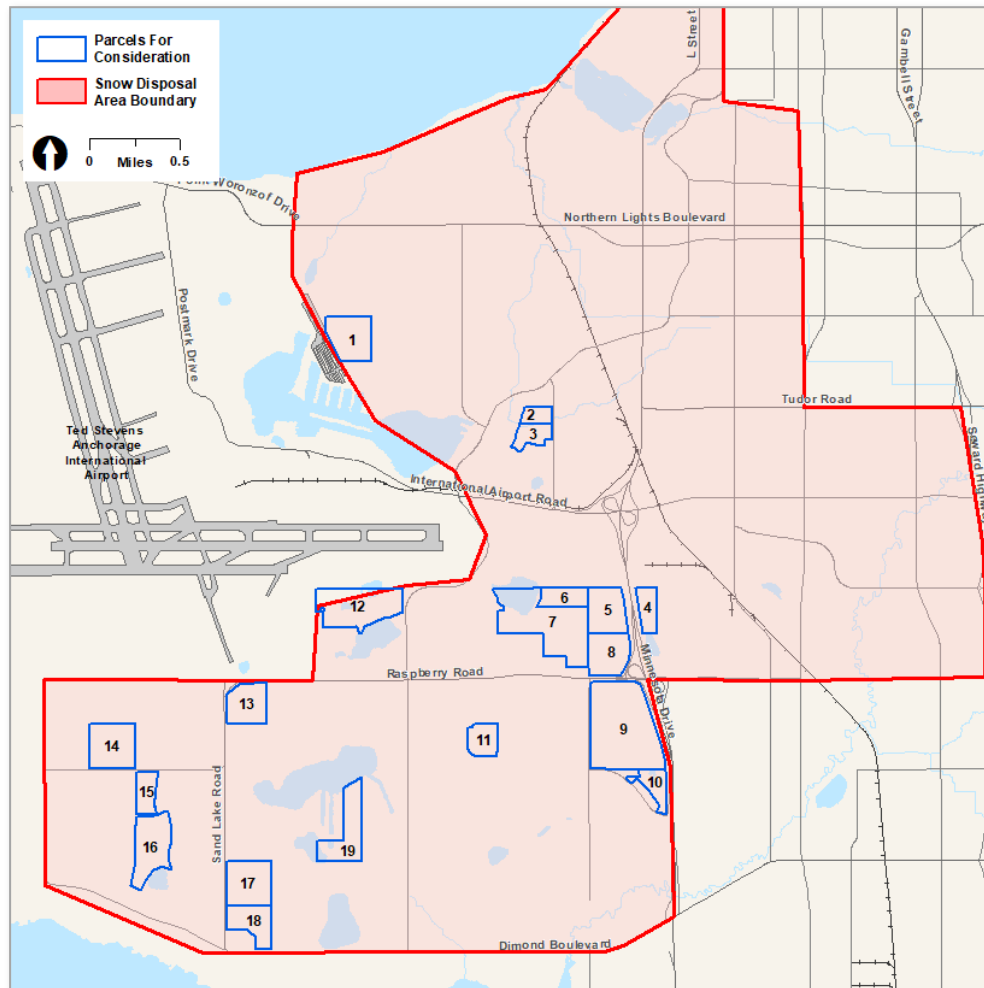


Figure 5. Initial Parcels Identified for Consideration

3.3 Initial Site Evaluation

After the initial identification, the 19 sites were further evaluated against four desired characteristics. Each site was given a rating of 1 through 3 for each characteristic:

- **1** = site was unacceptable for this characteristic
- **2** = site was neutral for this characteristic
- **3** = site was preferable for this characteristic

Sites with a rating of 1 for any of the four characteristics described below were eliminated from consideration.

- **Site Zoning:** Appropriate zoning for the subject lot and surrounding lots. Residentially zoned lots received a rating of 1. Sites that would likely require a conditional use permit received a



rating of 2. Lots with no restrictions were given a rating of 3. None of the initial sites were rated as 3.

- **Operational Flexibility:** Ability to operate 24 hours a day. Sites that were certain to have operational restrictions were rated as 1. Sites that had some risk of operational restrictions being put in place were rated as 2. Sites that would likely have zero operational restrictions were rated as 3. This parameter was guided to some extent by the results of public outreach feedback.
- **Site Access:** Access to collector or arterial roads. Sites with access routes that travel extensively through residential neighborhoods received a rating of 1. Sites with some access to collector or arterial roads were rated as 2. Sites that had good access to collector or arterial roads were given a rating of 3.
- **Site Availability:** Site owned by the Municipality or suitable for purchase or lease with no stated future plans for the parcel. Undeveloped parcels that appear to have current uses such as gravel pits or storage yards or had similar contractual concerns as the existing Northwood site received a rating of 1. Sites with some existing usage or that may have difficulty obtaining a lease or purchase were rated as 2. Sites with limited to no existing usage received a rating of 3.

Table 1 displays the results of the initial evaluation of the 19 parcels.



Table 1. Initial Site Evaluation Matrix

Site	Owner	Site Size (acres)	Zoning	Site Zoning	Operational Flexibility	Site Access	Site Availability	Reason For Elimination
1	State of Alaska - TSAIA	35.7	TR	2	3	1	1	Restricted Access
2	Universal Financing Corp	10.0	R-3 SL	1	1	2	2	Zoning Restrictions
3	MOA	15.1	R-1	1	1	2	2	Zoning Restrictions
4	Chugach Electric	15.4	TR	2	3	3	1	Site Unavailable
5	MOA MOA 5501	32.0	TR	2	3	3	3	
6	MOA MOA 5501	17.3	TR	2	3	2	3	
7	MOA Heritage Land Bank	86.8	PLI	2	3	2	2	
8	MOA Heritage Land Bank	31.8	PLI	2	3	2	3	
9	MOA Heritage Land Bank	108.9	PLI	2	2	3	3	
10	MOA Heritage Land Bank	15.4	R-4	1	1	2	2	Zoning Restrictions
11	MOA MOA 5501	18.1	PLI	2	1	1	1	Operational Issues
12	State of Alaska - TSAIA	57.2	PLI	2	2	2	1	Site Unavailable
13	State of Alaska - TSAIA	29.3	PLI	2	2	2	1	Site Unavailable
14	Opal Investments	38.5	R-1	1	1	2	2	Zoning Restrictions
15	MOA - Parks & Rec	16.5	R-2A SL	1	1	1	2	Zoning Restrictions
16	MOA School District	41.8	R-2A SL	1	1	1	1	Zoning Restrictions
17	Anchorage Sand & Gravel	39.0	R-1A	1	2	3	2	Zoning Restrictions
18	Anchorage Sand & Gravel	26.9	R-1A	1	2	3	2	Zoning Restrictions
19	MOA Heritage Land Bank	38.8	R-1	1	1	1	1	Zoning Restrictions
Legend:		Unacceptable Characteristics			Neutral Characteristics		Preferable Characteristics	

Note: PLI = public lands and institutional; R = residential; TR = transition

3.4 Secondary Site Evaluation

After the initial site evaluation, five sites (Sites 5, 6, 7, 8, and 9) were identified for secondary evaluation. These five sites are all located west of Minnesota Drive on either side of Raspberry Road. Sites 5 through 8 are parcels within the Connor’s Bog area and Site 9 is located in the Strawberry Bog area (Figure 6). All considered sites are shown in the West Anchorage District Plan, Anchorage 2020 Comprehensive Plan and the Anchorage 2040 Land Use plan as park and natural open space/resource land use. The secondary evaluation process narrowed the 5 remaining sites to 2 candidates based on impacts to current and planned park and open space uses as discerned from comprehensive planning, public input, and use patterns. Also considered are usable space and configuration considerations

- Park and Open Space Impacts:** Sites 6 and 7 were eliminated from consideration due to the large number of official and social trails branching off of the Anchorage Water and Wastewater Utility (AWWU) sewer easement trail used as the main thoroughfare through Connor’s Bog Park. Much of the recreational use of Connor’s Bog Park is on the easement



trail and to the south and west of the trail. Development of either of these two sites would have a large impact on both the recreational users of Connors Bog and the wildlife in Connor's Lake. Both sites are on designated park lands. Sites 5 and 9 both have less recreational use and are not on designated park lands.

- **Parcel Configuration Considerations:** The sewer easement bisects Site 8, and the geometry of the lot and location of the easement within the lot would make access to a snow disposal area and security of the site difficult. Of the sites located within the Connors Bog area, a snow disposal site located at Site 5 is clearly the preferred option. Site 5 has little recreational traffic, offers straightforward site access through the M&O Kloep Station complex, and could be easily secured from unauthorized entry. Site 9 in Strawberry bog also has few configuration constraints and was also retained for final evaluation.

The elimination of Sites 6, 7, and 8 left two sites for analysis and evaluation:

- Site 5: NE Connor's Bog Site
- Site 9: NE Strawberry Bog Site

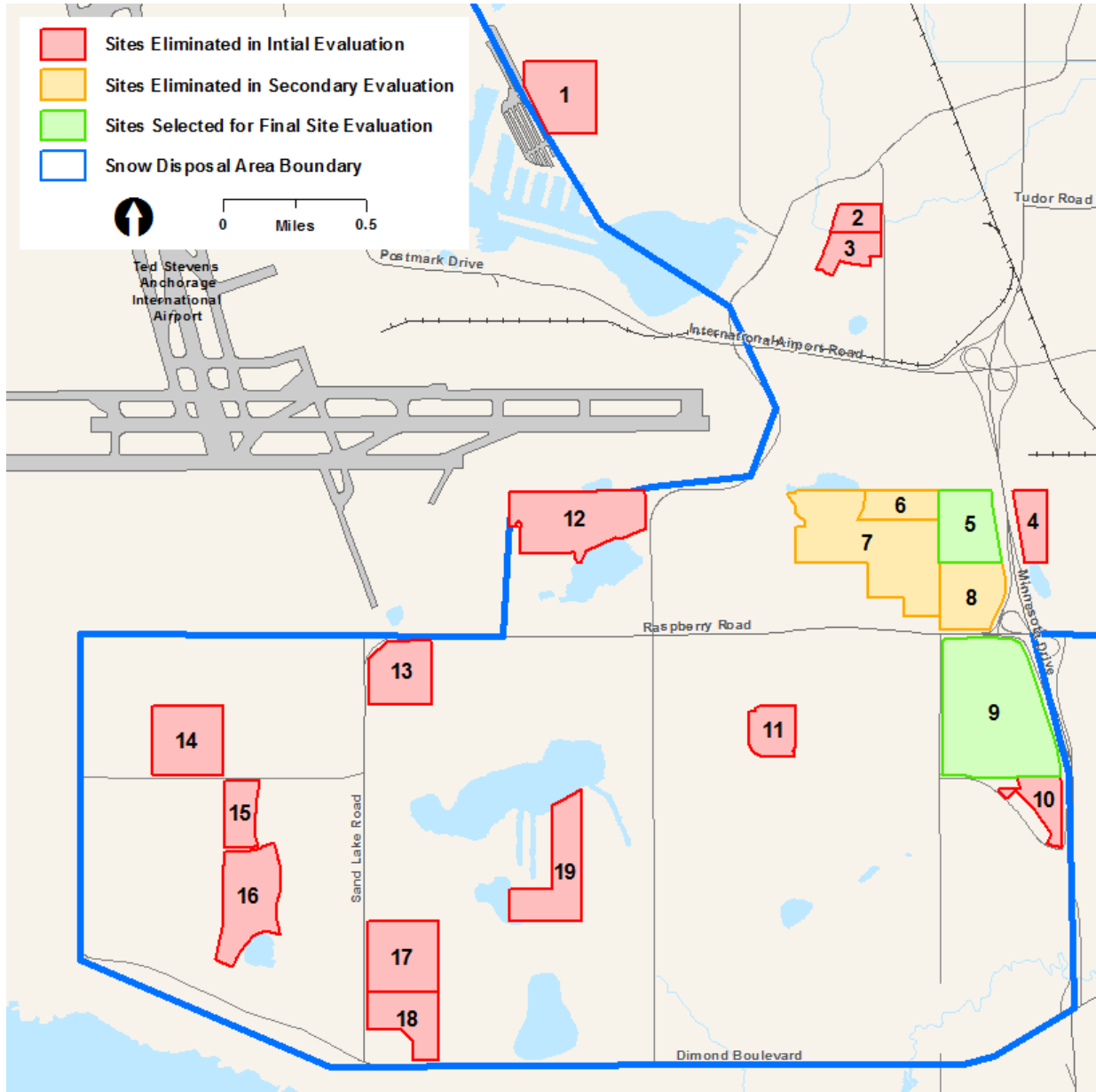


Figure 6. Final Site Evaluation Results



3.5 Final Site Evaluation

In order to make a final site selection recommendation, a thorough evaluation of the two remaining sites was performed that covered in more detail the factors considered in the initial evaluation: site zoning, operational flexibility, site access, and site availability (see Section 3.3); and secondary evaluation (see Section 3.4).

In addition to these four factors, five others were added to the final evaluation based on the public outreach feedback described in Section 3.1. The additional factors are described below.

- **Access to Appropriate Receiving Waters.** Snow disposal sites generate significant snow melt runoff that needs to be processed and disposed of into an appropriate receiving water. Any site selected for consideration should be able to receive a large amount of snow melt discharge. Sites should be avoided where snow melt runoff could raise water tables, impact existing infrastructure, or be deposited in areas that containing closed lakes or wetland systems unable to retain large amounts of water.
- **Potential Impacts to Neighborhoods and Residential Areas.** Snow disposal sites can have potential impacts to residents that include noise from snow dump trucks and machinery, nighttime glare from site lighting, air quality from dust, and visual impacts of the actual snow mounds and displaced trash. Some of these impacts can be mitigated with natural or constructed landscape buffers. Sites with numerous residents in proximity or trucking routes that pass through residential neighborhoods should be avoided to the maximum extent possible.
- **Potential Impacts to Wetlands.** Both potential sites are within mapped wetlands in the *Anchorage Wetlands Management Plan*. Both sites contain significant areas of Class “A” wetlands. Class A wetlands perform at least two significant wetland functions. The *Wetlands Management Plan* states that “‘A’ wetlands are considered most valuable in an undisturbed state, as most uses or activities, especially those requiring fill, negatively impact known wetland functions.” Class A wetlands are not to be altered or otherwise disturbed in any manner, except for projects that are in the public interest. The site selection process must show that snow disposal is in the public’s best interest and other large undeveloped upland parcels meeting the site facility requirements are not available.
- **Impacts to Park Land Use and Park Designations.** Sites located in designated park land would require approval from the Parks and Recreation Commission, Planning and Zoning and the Municipal Assembly prior to construction. Construction that limits current common park usage should be avoided.
- **Permitting Requirements.** Development of a snow disposal site requires extensive permitting from local, state, and, likely, national entities. Sites should have a clear path forward through permitting to be viable.



The following sections include an evaluation of the two remaining sites based on the above criteria. Conceptual layouts of snow disposal facilities on each site are also presented. Results and a summary of the comparison are provided in Section 4.

Conceptual designs were based on research of guidance documents and desired site characteristics. These conceptual layouts ensured that the sites have sufficient area and orientation for effective snow disposal. The layouts were developed using site area footprints for snow storage, water quality structures, access routes, required screening, and operations areas. They depict potential siting within the bounds of the individual parcels and are shown as concepts for planning purposes only. All are subject to further refinement based on delineation of wetlands, utility conflicts, traffic flow analysis, visual screening, and public input.

The Connor's Bog Site and the Strawberry Bog Site would both require the construction of a new snow disposal site of similar size with similar wetlands impacts. The total construction costs for both sites would be roughly similar. As both sites are on MOA-owned parcels, there would be no site acquisition costs. Since the total project costs for both sites would be similar, development, and operational costs, although considered, were not included in the evaluation below.

3.5.1 Site 5 – Connor's Bog Site

This site is located south of Javier De La Vega Park and west of Minnesota Drive. The land is owned by the MOA and currently managed by the Parks and Recreation Department. The total parcel size is 32 acres located in Class A wetlands. The snow disposal pad would be best located at the north end of the parcel where the elevation is slightly higher than at the south end, and access is feasible utilizing existing easements from the M&O Kloep Station facilities. Development would involve construction of a fill pad, improvements to the access road to separate snow haul truck traffic from the existing operations areas, extension of an access road along the section line easement, a perimeter berm, fencing, and water quality structures. Melt water would be discharged into the wetlands of Connor's Bog and Connor's Lake. Figure 7 shows a conceptual layout for Site 5. Details of the selection parameters are described here:

Site Access

Access to the site would be off International Airport Road, a designated expressway, and through the existing M&O Kloep Station facility. This is identical to the access route for the existing Northwood Site. Access to Site 5 would require an extension of the access road beyond the Kloep Station facility and would require to separation of snow hauling traffic from the Kloep Station employee parking areas. Small incursions into designated park land south of the Kloep parcel are anticipated to accommodate existing CEA power poles in the section line easement. The development of Site 5 will result in no change to the existing traffic flow on public streets.

Zoning

This site is zoned within the TR district. This designation was initially developed in the 1960s as the unrestricted zoning district for parcels that were not expected to be developed in the near future.



Development of Anchorage has filled in areas previously thought to be undevelopable and many of these lands have been rezoned over time. Parcels zoned TR as of January 1, 2014, are subject to the land use regulations in effect prior to the 2014 Title 21 rewrite until they become rezoned. As part of Connor's Bog, this site, although zoned as TR, is managed by the Parks and Recreation Department. The development of a snow disposal site in a TR-zoned parcel is allowed as a permitted use (AMC 21.40.240 of the old code). Should a rezone of this area occur, this land would likely be zoned within a PLI district, similar to the parcels to the south (Site 8), west (Site 7), and north (De La Vega Park). The development of a snow disposal site on a PLI-zoned land is allowed as a conditional use (AMC 21.05.010). Snow disposal sites, regardless of zoning district, must undergo a public facility site selection review (AMC 21.03.140).

In TR zoning districts, there is no height restriction for snow disposal. For PLI-zoned parcels, the maximum height is 45 feet (AMC 21.06.020.C). Conditional use standards for snow disposal sites set the maximum height of snow piles at 35 feet when within 500 feet of a residential district (AMC 21.05.060.E.8.b.II.B). As there are no residential areas within 500 feet of the proposed site location, this additional restriction does not apply. Based on past records of snowfall and snow disposal in West Anchorage, it is unlikely that a properly sized snow disposal site would exceed 35 feet of height in most snow years.

The parcel is large enough compared to the necessary site layout that most setback requirements (AMC 21.05.060.E.8.b.II.C) should not be an issue.

Operational Flexibility

Access to Site 5 is the same as access to the existing Northwood Site. As the new site is farther from residential areas or other noise-sensitive areas, it is unlikely that additional operational restrictions would be put in place on the site. This would allow for 24-hour operations, as are currently allowed at the Northwood Site.

Site Availability

This site is on land owned by the Municipality with relatively low public use. The land is not dedicated park land but is currently managed by the Parks and Recreation Department, which has been receptive to its utilization as a snow disposal site.

Access to Appropriate Receiving Waters

Snow melt from a snow disposal site at Site 5 would be retained within the watershed of Connor's Lake. Melt water would travel through several culverts under the AWWU sewer main easement and into Connor's Lake. Connor's Lake currently receives the melt water from the existing site and is sufficiently sized to receive melt water from a new site.

Potential Impacts to Neighborhoods and Residential Areas

Access to Site 5 would be similar to access to the existing Northwood Site, with some additional routing through the Kloep Station facility. The additional route would be on service roads with no



public traffic. Fencing would be necessary to limit pedestrian access to the disposal site both from Connor's Bog off-leash dog area and Javier De La Vega Park, and exposure of the public to noise or other nuisances would be similar to the present condition. There would be no change in existing traffic patterns during snow disposal, and there would be limited increased exposure of the public to noise or other nuisance.

Potential Impacts to Wetlands

Site 5 is located in mapped Class A wetlands and will impact those wetlands. The pad development, access road, perimeter berm, and water quality structures may require approximately 17.3 acres of fill in Class A wetlands. Class A wetlands are the highest value wetlands within the MOA (see Section 3.5).

The primary wetland functions and values that would be impacted at this site include storm water retention, nutrient retention and transport, wildlife and fish habitat, and recreation. Connor's Bog provides a significant source of storm water storage and water quality filtering in West Anchorage. This freshwater wetland and lake complex also provide an important habitat oasis in an otherwise urban landscape. The diversity of plant life at the site provides habitat for small mammals, moose, and many species of migratory birds. At least 83 species of birds have been recorded in the area, including nesting Pacific loons.

On the plus side these hydraulically disconnected wetlands and the included Connor's Lake accrue significant benefit from the existing Northwood snow site. Melt water from this facility have helped to maintain wetland and aquatic habitat function in this area for several decades. Melt waters from the proposed site will continue to provide this much needed hydration to maintain the wetland functions of the remaining areas of Connor's bog. This is not intended to downplay the impact of the new fill site, but many other wetland areas of the municipality are slowly reverting to upland vegetation and function as they become disconnected from historic water sources.

Impacts to Park Land Use and Park Designations

While Site 5 would be located on land managed by the Parks and Recreation Department, the site is not designated park land. However, a very small portion of the access road to Site 5 needs to be located on designated parkland and would require approval from the Parks and Recreation Commission, Planning and Zoning Commission, and the Municipal Assembly prior to construction.

Adjacent to Site 5 is Javier De La Vega Park, which hosts soccer and baseball games during summer, along with other park uses. Visual impacts to users of Javier De La Vega Park and drivers along Minnesota Drive would be partially mitigated by existing and project-installed buffers of trees to block the sightlines of the remnant melting snow. Javier De La Vega Park sees lower use in winter, so dumping and hauling activities would have less impacts on park users during that season.

Site visits after winter snowfall events suggest that the northeast corner of Connor's Bog has lighter use compared to the areas west of the AWWU corridor. Summer use is minimal due to the lack of trails and spongy wetland footing. In summary, the impacts to users of Connor's Bog, and Javier De La Vega Park while not insignificant is expected to be limited and efforts for mitigated will be



integrated into design features and other impact alleviations. The existing Northwood site is closely adjacent to the main corridor into Connor's Park. This intrusion will be removed or lessened by moving the snow site further from the more intense dog park use areas and providing vegetation buffers.

Permitting Requirements

The Connor's Bog Site is not located on designated park land and would not require Parks and Recreation Department approval. The municipal Planning and Zoning Department is recommending that the parcel if used be rezoned from TR to PLI and the Anchorage Comprehensive Plan be amended to allow the use of this parcel as a snow site. Development of this site will require a Municipal Conditional Use and Land Reclamation Permit, including waivers from several snow disposal site Design Criteria. This site would also require a Jurisdictional Determination (JD) from the U.S. Army Corps of Engineers under the Clean Water Act (CWA) Section 404 (outcome of JD would determine if wetlands permitting and mitigation would be required under the CWA), a Stormwater Discharge Permit from Alaska Department of Environmental Conservation, a sign-off from PM&E Watershed Management, fill and grade permits, and utility agreements. These permits will require significant effort, but all should be obtainable.

Site Summary

Site 5: Connor's Bog Site is a very desirable snow disposal site. It meets most of the criteria for a snow disposal site and has few drawbacks. The site would have low to no impact on residents and neighbors, is sufficiently sized and available for use, will have no operational restrictions, and has adequate receiving waters. The concerns pertaining to the Connor's Bog Site are the required changes to the Comprehensive Plan, rezoning requirements, park user impacts, wetlands fill and its location on Class A wetlands. Figure 7 shows a conceptual design drawing of the Connor's Bog Site.



Figure 7. Site 5: Connor's Bog Site Conceptual Design



3.5.2 Site 9 – Strawberry Bog Site

This site is located south of Raspberry Road and between Northwood Street and Minnesota Drive. It is owned by the MOA and managed by Heritage Land Bank. The total parcel size is 109 acres and consists mostly of Class A wetlands. Like Site 5, this site would involve the construction of a fill pad, perimeter berm, fencing, water quality structures, and a new access road. Figure 8 shows a conceptual layout for the site.

Site Access

Access would be from Northwood Drive south of Raspberry Road. All routes to the snow disposal site from the north could be made on collector and arterial routes. Traffic flow to the site may necessitate access from Strawberry Road exit off Minnesota Drive. Strawberry Road is a designated collector route and would require improvement prior to use as access to a snow disposal site. Development of this site will result in a significant change in the amount and flow of traffic in the neighborhood. The entrance to the site would be controlled with fencing and gates to restrict public access.

Zoning

Site 9 is zoned PLI, which allows snow disposal sites as a conditional use (AMC 21.05.010). Similar to Site 5, this site would require conditional use approval and public facility site selection plan approval (AMC 21.03.140). The site is bordered on the west by Northwood Street, which has areas of residential and business-zoned properties to the west. Land use is a mix of business, large apartment complexes, and single family and duplex homes. The placement of the snow disposal site would be outside of the 500-foot separation from residential districts. This would allow for no height restrictions from conditional use zoning regulations for snow disposal sites (AMC 21.05.060.E.8.b.II.B), but the site would be subject to the 45-foot limitation of PLI zoned parcels (AMC 21.06.020.C). As with Site 5, it is unlikely that the height of the snow pile would reach 35 feet.

As mentioned earlier the parcel is shown as park and natural open space in the Comprehensive Plan and change of land use will require an amendment to the Comprehensive Plan. As with Site 5, this parcel is large enough compared to the necessary site layout that most setback requirements (AMC 21.05.060.E.8.b.II.C) should not be an issue.

Operational Flexibility

Due to the proximity to both the residential development on the west side of Northwood Drive and potential trucking routes through a noise-sensitive residential area, as discussed below, operational restrictions may be placed on a snow disposal site at Site 9. The site could be restricted to daytime operations only, which is common at other municipal snow sites in residential settings. This would necessitate trucking night-hauled snow from larger arterial streets to the C Street Site and a similar volume of day-removed snow back to the Strawberry Bog Site. This process would increase the trucking cost and restrict the operational flexibility needed for efficient snow management by M&O.



Site Availability

Site 9 is located on Municipality-owned land outside of any designated park. There is low utilization of the Strawberry Bog area due to lack of trails and presence of wetlands. The site is available to use for a snow disposal site with the correct conditional use permits.

Access to Appropriate Receiving Waters

Snow melt from a snow disposal site at Site 9 would be retained within the watershed of Strawberry Lake. Comparison of historical satellite imagery from the 1950s to the present show that Strawberry Lake has decreased in size over time. Melt water from a snow disposal site at Site 9 could replenish the lake levels. Strawberry Lake eventually discharges into the Campbell Creek drainage. Site 9 has sufficient receiving waters for a snow disposal site.

Potential Impact to Neighborhoods and Residential Areas

The development of Site 9 would result in a major change to the traffic flow and volume in the area. Traffic flow to the site would have the highest impact on the high-density residential lots on the north end of Northwood Drive. More lots along Northwood Drive are slated for development in the future. Should traffic need to be routed through the Strawberry Road exit, trucks would travel through an established residential neighborhood and would have direct impacts on a large segment of residential properties fronting this route on the west. Large volumes of truck traffic and the noise from snow disposal operations would impact these residential neighborhoods no matter the direction of access. Installation of berms and landscaping trees may partially reduce noise and visual impacts on these neighborhoods, but public feedback indicates that this is a major concern.

Potential Impact to Wetlands

As with Site 5, Site 9 is also located in mapped Class A wetlands and would require wetland mitigation. The conceptual layout is similar to the Site 5 layout, but a more conventional V-Swale design is shown. The pad development, access road, perimeter berm, and water quality structures require a total of 17.4 acres of fill in Class A wetlands. Class A wetlands are the highest value wetlands within the MOA (see Section 3.5).

Strawberry Bog and Connor's Bog are part of the same original bog system now cut by Raspberry Road. Many of the potential impacts on wetland functions and values at the Site 9 would be similar to those at Site 5. The primary wetland functions and services that would be impacted at this site include flood water retention, nutrient retention and transport, wildlife and fish habitat, and recreation. The Strawberry Bog freshwater wetland and lake complex also provides important wildlife habitat in an otherwise urban landscape. The diversity of plant life at the site provides habitat for small mammals, moose, and many species of migratory birds.

Impacts to Park Land Use and Park Designations

This undesignated open land in Strawberry Bog has low use compared to Connor's Bog and other, more developed parks. The southern part of the parcel around Strawberry Lake has an ad hoc



network of boggy routes used by the local residents. These would be largely unaffected by the snow site. Development of Site 9 would have little to no impact on park land use or park designations.

Permitting Requirements

The Strawberry Bog area is not designated park land and would not require approval from the Parks and Recreation Commission. Development of this parcel would require a Municipal Conditional Use and Land Reclamation Permit to include waivers from several snow disposal site design criteria. This site would also require a JD from the U.S. Army Corps of Engineers under the Clean Water Act (CWA) Section 404 (outcome of JD would determine if wetlands permitting and mitigation would be required under the CWA), a Stormwater Discharge Permit from the Alaska Department of Environmental Conservation, a sign off from PM&E Watershed Management, fill and grade permits, and utility agreements. These permits would require significant effort, but all should be obtainable.

Site Summary

Site 9: Strawberry Bog Site is a moderately desirable snow disposal site. It meets some of the site selection criteria for a snow disposal site. The Strawberry Bog Site would be located on land that is sufficiently sized and available for use, it does not impact existing park use, and it has adequate receiving waters. However, there are several major concerns with respect to access and neighborhood impacts of the site. The site would be located near existing and growing residential areas, and access may have to be through a residential neighborhood. Operational restrictions, such as a restriction on nighttime operation, could be put in place due to this proximity. Any restrictions that do not allow for 24/7 operation would make this an undesirable snow disposal site. The site is also located on Class A wetlands, which would require additional fill and mitigation requirements. Figure 8 shows a conceptual design drawing of the Strawberry Bog Site.





4. Site Selection Recommendations

Due to its limited overall impact on the community, Site 5 (Connor’s Bog Site) is recommended. Both Site 5 and Site 9 are located in Class A wetlands and would require significant permitting efforts. Both will require a change to the Comprehensive Plans. Site 5 will require rezoning to PLI. Comments from public involvement efforts indicate that Site 5 is generally the preferred site, compared to Site 9.

Development of a snow disposal site on Site 9 (Strawberry Bog Site) would have significant community impacts on residential neighborhoods from traffic and noise associated with normal snow disposal operations. Development of Site 5 would not change the existing traffic flow for neighbors.

Operational flexibility also weighs heavily in favor of Site 5. The specter of operational restrictions due to residential impacts of night operations introduce an unacceptable risk for the development of Site 9. Second only to public impacts, operational efficiency is the most important driver for site selection. Environmental impacts also weigh in heavily but appear approximate equal for both sites.

Hearings with the MOA Planning and Zoning Commission would be required for approval of the site selection and for site plan review and conditional use permitting. A CWA Section 404 Permit from the U.S. Army Corps of Engineers may be required for the placement of fill in wetlands.

Table 2 provides a comparison summary of the two sites for each evaluation factor, with green symbolizing desirable, yellow symbolizing neutral, and red symbolizing undesirable characteristics.

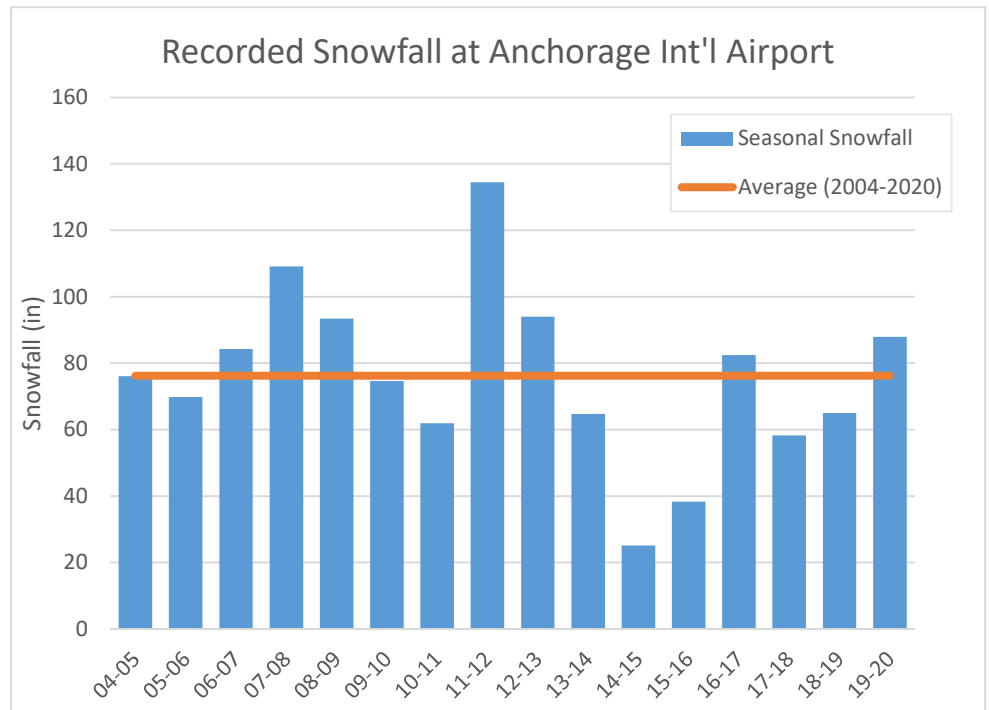


Table 2. Final Site Selection Recommendations Comparison Table

Evaluation Factor	Site 5: Connor's Bog Site	Site 9: Strawberry Bog Site	
Site Size	32.0 acres	108.96 acres	
Site Access	International Airport Road (Expressway) through MOA Kloop Station	Off Northwood Drive (Arterial Road)	
Zoning	TR – Transition will be rezoned to PLI	PLI – Public Lands and Institutions	
Owner	MOA Parks & Recreation	MOA Heritage Land Bank	
Acquisition Cost	None	None	
Operational Flexibility	Likely no restrictions on operation	Likely restrictions on nighttime operations	
Receiving Waters	Connor's Bog and Lake	Strawberry Bog and Lake	
Neighborhood Impacts	None or reduced from existing	High impact on adjacent residential areas to the west and south	
Wetlands Impacts	Extensive Class A wetlands	Extensive Class A wetlands	
Park Land Impacts	Parcel Managed by Parks and Recreation, low utilization; Comprehensive Plan listed as park and natural open space. Access road would impact small area of designated parkland	No Designated park land impacts, Comprehensive Plan listed as park and open space.	
Permitting Requirements	Extensive permitting: <ul style="list-style-type: none"> • Comp Plan Amendment • Rezoning • Conditional Use and Land Reclamation Permits • Title 21 snow site design waivers • ADEC Stormwater Discharge Permit • Misc. MOA Building Safety permits, PM&E Watershed Management sign off, and utility agreements 	Extensive permitting: <ul style="list-style-type: none"> • Comp Plan Amendment required. • Conditional Use and Land Reclamation Permits, • Title 21 snow site design waivers • ADEC Stormwater Discharge Permit • Misc. MOA Building Safety permits, PM&E Watershed Management sign off, and utility agreements 	
Legend	Undesirable Characteristics	Neutral Characteristics	Desirable Characteristics

Appendix A: Historical Anchorage Snowfall and Normalized Snow Truckload Calculations

Season	Snowfall (inches)
19-20	87.9
18-19	65.0
17-18	58.3
16-17	82.4
15-16	38.3
14-15	25.1
13-14	64.7
12-13	94.0
11-12	134.5
10-11	61.9
09-10	74.6
08-09	93.4
07-08	109.1
06-07	84.3
05-06	69.8
04-05	76.1
Average	76.2



Normalization of Snow TruckLoads Calculations	
Average Snowfall (inches)	76.2
2018-19 Snowfall (inches)	65.0
2018-19 % of Average	85%
2018-19 Snow Truckloads delivered to Northwood	8,879
Snow Truckloads Normalized to Average Year	10,411

Appendix B:

Selection of Snow Disposal Site Guidance Documents and General Relevant Contents

Document: Section 21 Title 21
<i>Author/Source: Municipality of Anchorage</i>
Outline of public facility site selection process Snow disposal site regulations Waiver process outline
Document: 2017 Anchorage Stormwater Manual
<i>Author/Source: Municipality of Anchorage PM&E</i>
Melt water discharge profile Site selection criteria
Document: Anchorage Street Deicer and Snow Disposal 2003 Best Management Practices Guidance
<i>Author/Source: Watershed Management Program - WMP CPg02001</i>
Documentation of management of snow disposal sites
Document: 2013 Evaluation of Anchorage Snow Disposal Sites
<i>Author/Source: Watershed Management Program - WMP APr14002</i>
V-Swale design guidance General site design guidance
Document: Anchorage Storm Water Treatment in Wetlands: 2001 Progress Report
<i>Author/Source: Watershed Management Program - WMP APr01002</i>
Wetlands status in Anchorage Potential benefits of snow melt water into wetlands
Document: Urban and Highway Snowmelt: Minimizing the Impact on Receiving Water
<i>Author/Source: Water Environment Research Foundation: Project 94-IRM-2</i>
Estimation of metals and salts in melt water discharge Evaluation of toxic effects of these contaminants
Document: Effects of Snow Dump Meltwater on Adjacent Black Spruce Bog Vegetation
<i>Author/Source: Alaska Pacific University - Kristen Hansen</i>
Effect of melt water from snow disposal sites on adjacent vegetation
Document: Proposed Eagle River Snow Disposal Site: Preliminary Review
<i>Author/Source: Watershed Management Program</i>
Snow disposal site characteristics and impacts Contaminant characterization of snow disposal melt water General melt water discharge volumes and impacts
Document: Synthesis of Best Management Practices for Snow Storage Areas
<i>Author/Source: Alaska DOT&PF Research & Technology Transfer</i>
General best practices around the state for snow disposal
Document: The Anchorage Debit-Credit Method
<i>Author/Source: Heather Dean, April 2011 – USACOE, EPA, US Fish & Wildlife, MOA</i>
Procedure for determining development debits and compensatory mitigation credits

Appendix C:
Public Outreach Summary



West Anchorage Snow Disposal Project

Project Management and Engineering No. 19-01

Phase One Public Outreach Summary

Municipality of Anchorage
Anchorage, Alaska
March 24, 2020 – April 24, 2020



Table of Contents

Introduction	2
Overview of Phase One Public Involvement Activities	2
Online Open House and Virtual Meeting	2
Virtual Meeting – Project Team Live Chat.....	2
Attendance	2
Advertising.....	2
Summary of Comments	3

Attachments

- Attachment A: Postcard
- Attachment B: Advertisements in the *Anchorage Daily News*
- Attachment C: Press Release
- Attachment D: Project Flyer
- Attachment E: Phase One Comment Log



Introduction

This public outreach summary is used for tracking and documenting public involvement activities for Phase One of the West Anchorage Snow Disposal Project (Snow Disposal Project). It outlines the Phase One public involvement strategies for the period of March 24 through April 24, 2020, and the methods used to engage and inform the public on the Snow Disposal Project. The summary includes a description of the online open house and virtual meeting, the tools used for implementation, and the results of the public outreach during Phase One.

Overview of Phase One Public Involvement

Activities

The project team conducted a variety of public outreach tactics to engage and inform the public on the Snow Disposal Project. The tactics used in Phase One are described below.

Online Open House and Virtual Meeting

On Tuesday, March 24, 2020, the Snow Disposal Project team hosted an online, interactive, self-guided public open house on the project website that was available through Friday, April 24, 2020. The online open house consisted of a total of eight sections that outlined project information and one section that included ways to comment on the project. The purpose of the online open house was to inform the public of the Municipality of Anchorage's (MOA's) West Anchorage Snow Disposal Project and receive feedback on site selection criteria and potential locations to be considered.

Virtual Meeting – Project Team Live Chat

In addition to the online open house site, the project team hosted a virtual meeting on Tuesday, March 24, 2020, from 4:30pm to 6:30pm at which members of the public could interact with the project team through the online open house site via a live chat feature.

Attendance

A total of 35 visitors attended the online open house on Tuesday, March 24, 2020, from 4:30pm to 6:30pm, 8 of whom also participated in the virtual meeting live online chat. The live online open house was viewed 137 times from March 24, 2020, to April 24, 2020.

Advertising

The online public open house was advertised in the following ways:

- Meeting information on the project website: www.westanchoragesnow.com
- Postcard mailer to residents near the project area (total of 4,139; Attachment A)
- An advertisement in the *Anchorage Daily News* (Attachment B)
- Presentations at the Turnagain Community Council and Sand Lake Community Council meetings
- A press release sent out by PM&E (Attachment C)
- Postings to nextdoor.com
- Flyers posted around the project area (Attachment D)



West Anchorage Snow Disposal Project Phase One Public Outreach Summary

Summary of Comments

The comments received during the online open house and the virtual public meeting (Attachment E) focused primarily on the snow disposal site selection process, the need for a new site location, the possible need for wetland permitting and mitigation, and communication with other agencies and organizations such as Anchorage Water and Wastewater Utility.



West Anchorage Snow Disposal Project
Phase One Public Outreach Summary

Attachment A

Postcard



West Anchorage Snow Disposal Project



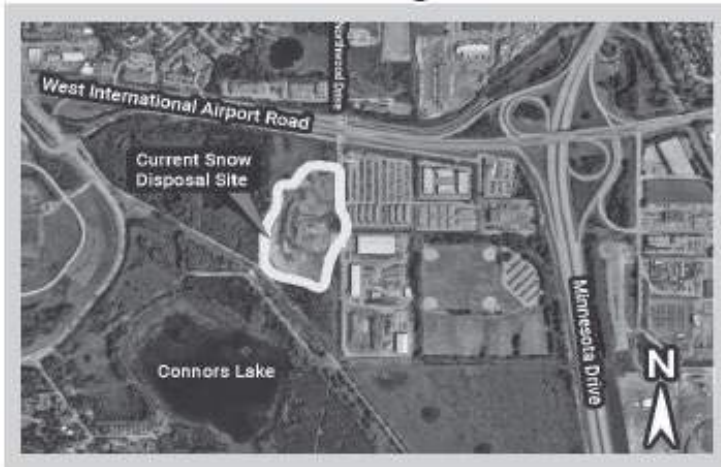
West Anchorage
Snow Disposal Project
2525 C Street, Suite 500
Anchorage, Alaska 99503

Online Open House & Virtual Public Meeting

**Online Open House
March 24 - April 24, 2020**

**Virtual Public Meeting
Tuesday, March 24, 2020
from 4:30-6:30 pm**

www.westanchoragesnow.com





West Anchorage Snow Disposal Project



Online Open House
March 24 - April 24, 2020

Virtual Public Meeting
Tuesday, March 24, 2020
from 4:30-6:30 pm

Visit westanchoragesnow.com

The Municipality of Anchorage is collecting information on potential locations for the placement of snow removed from West Anchorage streets during winter. Snow disposal location criteria and public feedback will be considered as part of a site selection process.

You are invited to attend an Online Open House to learn about the project and provide your feedback on site selection criteria and potential locations to be considered.

If you have any questions, please contact the project public involvement lead, Josie Wilson, at (907) 644-2030 or Josie.wilson@hdrinc.com.

Stay in-the-know  Sign up to receive email updates on our website at www.westanchoragesnow.com

Project Management and Engineering No. 19-01



West Anchorage Snow Disposal Project
Phase One Public Outreach Summary

Attachment B

**Advertisement in the
Anchorage Daily news**



West Anchorage Snow Disposal Project



**ONLINE
MEETING
DETAILS**

Online Open House

Tuesday, March 24, 2020 | 4:30 pm – 6:30 pm

www.westanchoragesnow.com

The Municipality of Anchorage is collecting information on potential locations for the placement of snow removed from West Anchorage streets during winter. Snow disposal location criteria and public feedback will be considered as part of a site selection process.

You are invited to attend a Public Open House to learn about the project and provide your feedback on site selection criteria and potential locations to be considered.

Visit westanchoragesnow.com for project information or to submit comments. **Comment period from March 24 to April 24, 2020.**

If you have any questions, you may contact
Josie Wilson at 907 644-2030.

Project Management and Engineering No. 19-01



Attachment C

Press Release



PROJECT MANAGEMENT
PM&E
& ENGINEERING

Municipality of Anchorage

Ethan Berkowitz, Mayor

Project Management & Engineering Department

FOR IMMEDIATE RELEASE

March 24, 2020

Municipality of Anchorage Goes “Virtual” for Project Management and Engineering Public Meeting for the West Anchorage Snow Disposal Project

The Municipality of Anchorage Project Management & Engineering Office is hosting an online open house and virtual public meeting for the West Anchorage Snow Disposal Site project. The public is invited to attend and participate in the virtual meeting on Tuesday, March 24 from 4:30-6:30 p.m. by visiting the project website: www.westanchoragesnow.com.

ANCHORAGE – In response to the [“Hunker Down” order \(EO-03\)](#) and guidance to avoid social gatherings, the Municipality of Anchorage shifted a previously planned in-person public meeting for the West Anchorage Snow Disposal Site Project to an online open house format with a live-chat virtual meeting.

The project team is offering a virtual meeting through a live-chat feature on the website on **Tuesday, March 24, 2020 from 4:30-6:30pm**. The Online Open House will be available **March 24 through April 24, 2020** for participants to learn about the project and to leave comments. Members of the public can visit the project website at www.westanchoragesnow.com and then chat online with project team members during the virtual meeting, similar to a traditional public meeting.

The Municipality of Anchorage is collecting information on potential locations for the placement of snow removed from West Anchorage streets during winter. The project is in the information-gathering phase and the public is invited to learn about the project and to provide feedback on the site selection requirements for a future potential site as part of the site selection study.

Please join the project team at 4:30pm on Tuesday, March 24 online at www.westanchoragesnow.com to interact with the project team, to learn about the project, and to provide feedback on site selection criteria for potential locations for the West Anchorage Snow Disposal Site Project.

All public comments received during the live chat and through the website will be considered by the project team. The public can also submit comments via email or mail by April 24, 2020 to info@westanchoragesnow.com or by visiting the project website at www.westanchoragesnow.com. People may also sign up for the project distribution list to have project updates sent right to their inbox.

###

Media contact: Chelsea Ward-Waller, 907.575.8583, chelsea.ww@anchorageak.gov

About Municipality of Anchorage (MOA) Project Management & Engineering Department (PM&E)

PM&E designs and builds public works projects that provide a safe, convenient, and efficient transportation network throughout Anchorage. Voter-approved bonds fund the majority of these projects, which include sidewalks, transit facilities, roads, trails, drainage, and other public facilities that support Municipal Maintenance and Operations.



Attachment D

Project Flyer



West Anchorage Snow Disposal Project

Project Management and Engineering No. 19-01

Please Join Us!



Online Open House
Tuesday
March 24, 2020 from
4:30 to 6:30

visit:
westanchoragesnow.com



The Municipality of Anchorage is collecting information on potential locations for the placement of snow removed from West Anchorage streets during winter. Snow disposal location criteria and public feedback will be considered as part of a site selection process.

You are invited to attend a Public Open House to learn about the project and provide your feedback on site selection criteria and potential locations to be considered.

Visit www.westanchoragesnow.com for project information or to submit comments.

Comment period from March 24 to April 24, 2020.

If you have any questions, contact Josie Wilson at (907) 644-2030.



Attachment E

Comment Log

West Anchorage Snow Disposal Project

Phase One Comment Log

Comment Number	Date	Comment Type	Commenter	Organization	Comment	Response Date	Responded By	Response
1	3/6/2020	In Person - Turnagain Community Council	John Johansen	AIA - Manager of engineering, environmental, and planning	Opinions on "why" this project is happening - meeting minutes reflect when he was speaking and his questions. Seretary will provide minutes.			
2	3/17/2020	Email	Frank Rast	Public	<p>Hello Josie</p> <p>I am quite interested in this project as I have been lobbying for years to get the Northwood Snow dump leased at a more reasonable rate. I realize that keeping that site is a dead end. It would be nice if the public got a little more background on this rather than the "does not meet contracting requirements" description on the website. I understand that literally an act of congress would be required to lease the Northwood Site at a reasonable rate. Very unfortunate because the MOA taxpayers actually own the airport through the State.</p> <p>I understand that Northwood and Raspberry is the likely site and it is unfortunate that a HLB property listed as a future neighborhood town center will now be a snow dump. What a scenic welcome site for visitors traveling down Minnesota Drive on their way to Kenai. Similar to the snow dumps lining the Seward Highway. This site also has potential for development as affordable R2-M Housing. A developer across the street just got approval for the R2-M height variance. Looking at a snow dump instead of the Chugach Mountains will not help his development</p> <p>I hate to say this but the AS&G Fill site would be an option if the trucking costs are not too high and the airspace was cleared with FAA and the Airport. The fill site is 300 feet down at the end of my block on Seaciff. I really don't want to look at a snow dump for 6 months out of the year, but this may be a better community option than Northwood and Raspberry.</p> <p>I will be asking Sara and Mia if they can contact Senator's Murkowski and Sullivan to see if a more reasonable lease can be provided at the current Northwood site.</p> <p>Thanks in advance for considering my comments.</p> <p>Frank Rast</p>			<p>Hi Frank,</p> <p>Thank you for your comment. The project team is taking it into consideration as part of the site selection study.</p> <p>In this process the city is considering the long term lease of the existing site but development costs are high even to retrofit it for current water quality standards. These development costs would be lost at the end of the lease unless a more permanent land agreement can be reached.</p> <p>We are sensitive to the impacts on current and potential residents. It is understood that the Raspberry site will potentially have more of these impacts and that will be factored into the selection process.</p> <p>The project team has looked into the AS&G site and found that financially, it is not a viable option. Due to the distance, trucking costs would greatly increase and since MOA does not own the land there would be purchasing costs to overcome.</p> <p>We appreciate your involvement on the project and will keep you posted with the progress.</p> <p>Sincerely,</p>
3	3/23/2020	Phone and Email	Judy See	Public	<p>Hello - I live in SW Anchorage - 1 block over from Dimond HS track. We r a swamp in this area. Our house has 2 sump pumps.</p> <p>When Arlene Street was recently redone, a semi truck got stuck in the muck. In the easement behind our homes the electric box has been tipped over for years. Each spring our phone service is not usable for a few days due to high water. The returning fowl swim in these flooded areas. PLEASE do NOT even consider this area for snow dumping - should there be any room.</p> <p>Thank you for reading this request.</p> <p>Sincerely, Judy See</p>	3/23/2020	Josie Wilson	Judy called the PI team before sending her email. Email does not need to be responded to. She just wanted her comment for the record.
4a	3/24/2020	Virtual Meeting Online Chat	Name not given	Public	Hello. Are the two potential sites shown on the webpage the only potential sites under consideration/that meet the criteria?	3/24/2020	Julie Makela	Hi! This is Julie Makela, Project Administrator. Those are the two potential sites at this point that we believe meet the criteria. We are open to considering other sites suggested by the public.
4b					Also, one of the several reasons the existing site no longer is viable is because it would need improvements to meet water quality standards. What improvements would need to be made to a new site to make either of them compliant with WQ standards?	3/24/2020	Julie Makela	Both of the potential sites would have to be fully upgraded to current snow disposal regulatory standards. The potential sites are large enough to have the WQ features necessary to meet water quality standards. One of the features would be settling ponds and periodic water quality monitoring.
5a	3/24/2020	Virtual Meeting Online Chat	Margaret Auth	Spendar Community Roadhouse - Member of the Executive Committee	I am most interested in keeping snow dumps away from residential neighborhoods. As someone who has lived near the current snow dump, I would like to say that the sounds from the trucks can be very loud and not just where they dump the snow. They also sometimes illegally use their air brakes on International. There's a reason it's illegal to use them in the city, but still, they do. I do know there is a need for the snow dump as my husband was the chair of the Spendar Community Council and I know this has been an issue for the Muni for years because the land is State owned.	3/24/2020	Josie Wilson	Thank you for your comment. This is Josie, the public involvement lead. I am sorry to hear that. I appreciate you taking the time to provide your comments and feedback. We will add this comment to our public feedback. Thanks Margaret! Would it be okay if we got back to you on your question about the design of the potential site and minimization of contamination?
5b					I also have a question: Because this will hopefully be a better planned snow dump than that currently used, will the Muni line the area to minimize contamination? I feel I have made all the comments I need to make at this time. I thank you for taking the time to do this presentation. I would appreciate more information on the design when you can get that information to me.			
6a					Just reread Connor's Bog "Advantages" list; not sure additional access to that area is necessarily a good thing. Connors Lake supports nesting loons as well as other bird and wildlife habitat. Current access seems to be adequate for those who enjoy this area. Improvements to the parking area off Jewel Lake would be interesting to see if those amenities would be viewed by users of the area as an acceptable trade off for loss of some of the parkland.	3/24/2020	Josie Wilson and Bill Spencer	We have several project team members online. Your questions are wonderful. We will answer as many as we can. We are also tracking all of these comments as part of the public involvement outreach. So, if we need to get back to you on a few of the questions, we will.
6b					This is Cathy Gleason, Turnagain CC President. I have several questions: 1) What zoning district/s would allow this proposed snow disposal facility?	3/24/2020	Bill Spencer	1) I will have to check on the specific zoning requirements for snow disposal sites, it is my understanding that these two parcels meet the required zoning criteria.
6c					2) Is the Municipality open to a rezoning process, if needed, to choose the best location?	3/24/2020	Bill Spencer	2) The Muni is open to rezoning if that is needed to use the best location

6d	3/24/2020	Virtual Meeting Online Chat	Cathy Gleason	Turnagain Community Council - President	3) What kind of Muni and Federal permitting would be required for a snow disposal facility?	3/24/2020	Bill Spencer	3) I believe the project will need a conditional use permit for the site, if we choose the site in Connors we will need approval from the Parks and Rec commission. Also needed will be a wetlands fill permit from the Army Corp of Engineers.
6e					4) Is the Connors Bog site dedicated parkland? If not, how close is the site to dedicated parkland and the portion of the park located on Airport property?	3/24/2020	Bill Spencer	4) Yes I believe the north east corner of the bog is dedicated park land, currently lightly used
6f					5) Has the Strawberry Bog site been used as wetland mitigation for previous wetland fill projects elsewhere in Anchorage? 6) Is there any Conservation Easement designation on the Strawberry or Connors Bog sites? 7) Has the Heritage Land Bank identified either of the sites to be used as part of a Muni wetland mitigation bank?	3/24/2020	Bill Spencer	5,6,7) HLB has indicated that the answer to all of these is no.
6g					8) Based on the locations along Minnesota Dr. of both identified sites, visual mitigation would be needed at either site, so they would not be seen from the road. Any other land use proposed for dedicated park land would require a vote of the people to undedicate it.	3/24/2020	Bill Spencer and Julie Makela	8) We will maintain as much of the existing treeline as possible and then augment with berms and landscaping. Hi Cathy! It's Julie Makela, Project Administrator. You are correct there are municipal codes regarding dedicated parkland. I don't have the exact code in front of me but the code does allow for other municipal use of dedicated parkland. If the Connors Bog is our preferred alternative, we will need to get Parks and Rec commission approval, Planning and Zoning commission approval and Assembly approval. We can follow up later with the exact code that allows for other municipal use of dedicated parkland.
					4/7/2020	Josie Wilson	AMC 25.10.080.C is the code that lays out the steps for other municipal use of dedicated park land	
6h				Either of the two sites identified include wetlands, hydrology impacts to adjacent remaining, undisturbed wetlands as well as surrounding upland areas would need to be looked at as well. Just reread Connor's Bog "Advantages" list; not sure additional access to that area is necessarily a good thing. Connors Lake supports nesting loons as well as other bird and wildlife habitat. Current access seems to be adequate for those who enjoy this area. Improvements to the parking area off Jewel Lake would be interesting to see if those amenities would be viewed by users of the area as an acceptable trade off for loss of some of the parkland. Many thanks to all of you for making the best of the situation we find our city in right now! I really appreciate your prompt responses and look forward to participating as the project moves forward. Signing off — it's dinner time!	3/24/2020	Josie Wilson and Bill Spencer	Josie Wilson: Hi Cathy, you have a very good point. Some of the +/- were from an operational point of view and not an impact point of view. You bring up a good point. I'll take that down as a note and look into it. Thank you for your suggestion. Bill Spencer: We will be looking closely at environmental impacts as we move forward. Many of the water quality parameters can be overcome with design of appropriate treatment. Hydrology impacts can be both negative and positive and we will look at those impacts as well.	
7	3/24/2020	Virtual Meeting Online Chat	Chris Conlon	Public	How about a cement pad with waste heat from the power plant across the highway piped underground just melted as the mountain grows. Then put a greenhouse on it and grow food during the rest of the year. Would you return current site back to recreation space? Ball fields, dog agility park etc?	3/24/2020	Josie Wilson, Bill Spencer, and Julie Makela	Now that is a creative idea, not sure my scope includes looking at that option but now you have my imagination going. We would have to see how the the BTUs penciled out and of course the melt water would just run off the pad and freeze creating a massive glacier. The heated greenhouse also has promise, we had hot house tomatoes in Kenai from the old diesel plant in the 60s. The current snow disposal site is owned by the airport. We currently rent the property on a short term basis. We're unsure of the airport's long term use plans are. The airport and muni were unable to reach an agreement on the land swap. All of the land around the airport is valuable to all parties. We will be taking all of the public comments from the virtual meeting today and creating a follow up communication and including the comments as part of the public record.
8	3/24/2020	Virtual Meeting Online Chat	Al	Public	What site locations meet your stated needs? Are both sites on city property? Are you desiring an Pkwy access for the Strawberry site? How do you desire to access the Strawberry site? Your map is useless, because of the chat page overlap. Perhaps you will consider a actual meeting with readable maps.	3/24/2020	Josie Wilson, Melinda Tso	We have two potential sites identified at this stage. We call these two sites: Strawberry Bog and Connor's Bog. Hello Al, Size of 14 acres or more of vacant land Centrally located to the current West Anchorage snow removal operations area to minimize haul times Allowance for 24/7 operations Allowance for operational lighting and sounds Minimized impacts to residents Economically viable development and operations cost Access from a collector roadway or higher roadway classification Able to be permitted for intended use (zoned appropriately). Yes, both sites are owned by the Municipality. The Connor's Bog site is Parks use and the Strawberry Bog site does not have any departmental use currently defined. Based on our concept look at the Strawberry site, there are restrictions for making an access off of Raspberry. The access would come off of Northwood Street south of Raspberry
9	3/24/2020	Virtual Meeting Online Chat	Jacki Armstrong		In my opinion the proposed Connor's Bog site appears to have fewer, and lesser, downsides-in particular the traffic impact. I do not however I ride my bike by the current snow dump several times a week and the traffic issue is re. Connor's Bog vs. Strawberry is significant. Access from International is, in my opinion, safer and less disruptive than would be Raspberry.	3/24/2020	Melinda Tso	This is Melinda Tso, Project Manager. We will add your feedback to all of our collected comments. Do you use the Connor's Bog area recreationally? We've looked at a concept access route to the Connor's Bog site and it would be off of the current access from International and Northwood St. For the Strawberry Bog site access would come off of Northwood south of Raspberry Road. In fact, there are restrictions to allow access off of Raspberry so the access would come off of Northwood, which would be a new impact. Your comments are noted and we appreciate this type of feedback on potential impacts to the public.
10	3/24/2020	Virtual Meeting Online Chat	Joe Sanks	AWWU	Hello all, AWWU here. Simple question. Both proposed site locations are near AWWU sewers. Access to the sewer mains will not be compromised? No encroachment into the sewer easement?	3/24/2020	Julie Makela, Josie Wilson,	Hi Joe! It's Julie Makela. We haven't looked too in detail to site details for either of the potential sites. As always we will work with AWWU on protecting facilities.



West Anchorage Snow Disposal Project

Project Management and Engineering No. 19-01

Phase Two Public Outreach Summary

Municipality of Anchorage
Anchorage, Alaska
October 16, 2020 – November 20, 2020



Table of Contents

Introduction	2
Overview of Phase Two Public Involvement Activities.....	2
Online Open House and Virtual Meeting	2
Attendance	2
Advertising.....	2
Summary of Comments	3
Other Public Involvement and Outreach Activities	3
Anchorage Transportation Fair	3
Community Council Engagement.....	3
Summary	3

Attachments

- Attachment A: Postcard
- Attachment B: Advertisements in the *Anchorage Daily News*
- Attachment C: E-Blast
- Attachment D: Project Flyer
- Attachment E: Comment Log



Introduction

This public outreach summary is used for tracking and documenting the public involvement activities conducted for Phase Two of the West Anchorage Snow Disposal Project (Snow Disposal Project). It outlines the Phase Two public involvement strategies for the period of September 1 through December 1, 2020, and the methods used to engage and inform the public on the Snow Disposal Project. The summary includes a description of the October 2020 online open house and virtual meeting live chat and the other public involvement conducted to inform the public about the availability of the Draft Site Selection Study Report and the public comment period for the report.

Overview of Phase Two Public Involvement Activities

The project team conducted a variety of public outreach tactics to engage and inform the public on the Snow Disposal Project and the availability of the Draft Site Selection Study Report. The tactics used in Phase Two are described below.

Online Open House and Virtual Meeting

On Tuesday, October 16, 2020, the Snow Disposal Project team kicked off an online, interactive, self-guided public open house on the project website that was available through Friday, November 20, 2020. The online open house consisted of a total of 10 sections that outlined project information and one section that included ways to comment on the project. The purpose of the online open house was to inform the public about the progress of the project and provide feedback on the site selection study results that identify the proposed new snow disposal site location: the Connor's Bog site.

In conjunction with the online open house, the project team hosted a virtual meeting on Thursday, October 29, 2020, from 4:00pm to 6:00pm at which members of the public could interact with the project team through the online open house site via a live chat feature.

Attendance

A total of 23 visitors attended the online open house on Thursday, October 29, 2020, from 4:00pm to 6:00pm, 11 of whom also participated in the virtual meeting live online chat. During the duration of the comment period (October 16–November 20), the site was viewed 137 times.

Advertising

The online open house was advertised in the following ways:

- Meeting information on the project website: www.westanchoragesnow.com
- Postcard mailer to residents near the project area (total of 4,139; Attachment A)
- Two advertisements in the *Anchorage Daily News* (Attachment B)
- Presentation at the Turnagain Community Council Meeting
- E-Blast sent to the Project's distribution list (total of 29; Attachment C)
- Flyers posted around the project area by the Turnagain, Spenard, and Sand Lake Community Councils (Attachment D)
- At the Anchorage Transportation Fair on November 18, 2020



West Anchorage Snow Disposal Project Phase Two Public Outreach Summary

- Social media posts of the online open house flyer to the Sand Lake Neighborhood Watch, Turnagain Neighbors, Spenard Complete Streets Coalition, and Girl Scouts of Alaska Facebook pages

Summary of Comments

The comments received during the online open house and the virtual public meeting (see Attachment E) focused primarily on the details of the site selection process and how other agencies are included, the proposed location's land designation classification and size requirements, submission of the public's preference for specific locations, requests to be added to the E-Blast distribution list, and environmental impacts and mitigation.

Other Public Involvement and Outreach Activities

Anchorage Transportation Fair

On Wednesday, November 18, 2020, the Snow Disposal Project team hosted an online and interactive booth at the Anchorage Transportation Fair. The booth consisted of three posters that outlined project information and the Draft Site Selection Study process and results. Three interactive questions were also available for booth visitors to answer and submit in real time. One section of the booth included an invitation to the Fall 2020 Online Open House, information on ways to comment on the project, and an opportunity to sign up for periodic project updates via email.

Community Council Engagement

The engagement and feedback from the Spenard, Sand Lake, and Turnagain Community Councils have been instrumental to this project's success. On Thursday, November 5, 2020, Bill Spencer, HDR Project Manager was able to attend the Turnagain Community Council Meeting to deliver a short project update and answer questions from Community Council Board members and the public. To help advertise for the public meeting, the Turnagain, Spenard, and Sand Lake Community Councils posted flyers around the project area.

Summary

The feedback received through the Phase One and Phase Two public involvement activities helped the project team make an informed decision on the preferred location for the snow disposal site. The project team will utilize the information received from the public in the next stages of the site selection process and final site selection



West Anchorage Snow Disposal Project
Phase Two Public Outreach Summary

Attachment A

Postcard



West Anchorage Snow Disposal Project Virtual Public Meeting



West Anchorage
Snow Disposal Project
2525 C Street, Suite 500
Anchorage, Alaska 99503

Online Open House
October 16 –
November 20, 2020

Virtual Public Meeting
Thursday, October 29 2020
4:00 pm – 6:00 pm

www.westanchoragesnow.com





West Anchorage Snow Disposal Project Virtual Public Meeting



Online Open House
October 16 – November 20, 2020

Join Us!

Virtual Public Meeting
Thursday, October 29 2020
4:00 pm – 6:00 pm

The Municipality of Anchorage has collected information on potential locations for the placement of snow removed from West Anchorage streets. The Draft Site Selection Study is now available and a preferred location has been identified. Public feedback is important and will be considered during the final site selection process.

You are invited to attend a Public Open House to provide your feedback regarding the Site Selection Study results and the preferred site location for the West Anchorage Snow Disposal Project.

Visit westanchoragesnow.com for project information, to sign up for project updates, and to submit comments. You can also contact the project team at info@westanchoragesnow.com.



Online open house available from **October 16 to November 20, 2020**.

If you have any questions, please contact the project public involvement lead, Josie Wilson, at (907) 644-2030 or Josie.Wilson@hdrinc.com.



Attachment B

**Advertisement in the
Anchorage Daily news**

CRIME AND COURTS

2 charged with evidence tampering in Anchorage hotel killing

Tess Williams
Anchorage Daily News

Two people were arrested Tuesday in relation to a fatal shooting at the Chelsea Inn Hotel in Spenard, although neither is suspected of being the shooter, charges say.

Soo Seo, the owner of the Chelsea Inn Hotel, described a fight

that broke out in the lobby of the hotel late on Oct. 21. During the altercation, a semi-automatic pistol dropped to the floor and was picked up by Sean Smith, 48, who was staying at the hotel, according to an affidavit filed by Detective Jeffrey Elbie. Smith grabbed the weapon and placed it in a room adjoining his, the charges

said. Seo said the man who started the fight left and later returned with another person. Shots were fired through the hotel window and fatally struck 48-year-old hotel employee Duane Fields.

Shannelle MacPherson, 34, told detectives she heard screams and saw Fields dead

in the lobby. According to the charges, she grabbed two knives, two guns and a cellphone from the scene and brought them to Smith's room, which adjoined her own.

MacPherson was charged Monday with five charges of tampering with physical evidence, police wrote in an alert. Smith is

facing charges of misconduct involving a weapon and tampering with evidence.

Police had not identified any suspects in Fields' death as of Wednesday afternoon, but said the "investigation is ongoing and more arrests may be forthcoming."

ALASKA LEGISLATURE

Attendance becomes the top campaign issue in a key state House district

James Brooks
Anchorage Daily News

The state House race in Anchorage's Sand Lake neighborhood is one of a few that could decide who controls the Alaska House of Representatives for the next two years.

But if you look at campaign ads in the district, the biggest issue in the race isn't the Permanent Fund dividend, school funding or the state budget — it's about the attendance of Rep. Sara Rasmussen, the Republican incumbent.

Rasmussen missed 168 of 481 votes in the 31st Alaska Legislature, the second-highest total of any lawmaker. More than 100 of the missed votes, including passage of the state budget, took place in March this year.

Rasmussen's independent challenger, Stephen Trimble, has criticized Rasmussen for those missed votes. So have third-party groups supporting Trimble's campaign.

"This is the only issue. They're sending out mailers and pushing videos into my district right now," Rasmussen said.

Rasmussen calls their approach a smear campaign that misses important context: She was prevented from returning to the Capitol because of quarantine rules added after she left Juneau to attend her great-grandfather's 100th birthday.

Attendance as a campaign issue

"I decided to run for state House when I saw that my current representative wasn't showing up for Alaska," Trimble said in a Sept. 2 video that launched his campaign.

Rasmussen issued a response two weeks later.

"I was barred from the Capitol because of COVID restrictions," she said, explaining that the video would be "the only time I'm going to talk about my opponent's purposeful and dishonest smear campaign."

But Trimble has continued to campaign on the issue, and Rasmussen has had to address it as she goes door to door. A Democratic campaign group has spent heavily on ads that feature it. One online ad says, "This November, let's elect someone who will actually show up and take care of business."

Attendance has been a key issue in at least one other race. Rep. Mark Neuman, R-Big Lake, was defeated in the Republican primary after local party officials endorsed his challenger. They said Neuman's absences, caused by health problems, had become a liability.

'Not in a normal world'

It's common for legislators to leave the Capitol during the Legislative session to visit their districts, take care of family, or deal with medical issues. When Rasmussen left Juneau on March 11, she had already missed about 60 votes, more than three-quarters of the House's 40 members.

On the day she left for a six-day family trip, Gov. Mike Dunleavy declared a statewide public health disaster.

Two days later, members of the House and Senate agreed to limit access to the state Capitol as a public health precaution. Lawmakers who traveled Outside were asked to quarantine themselves away from the Capitol for one week after returning.

While some lawmakers had left Juneau for weekend trips to their home

districts, Rasmussen was the only lawmaker outside of the state at that time. Rep. Sharon Jackson, R-Eagle River, had returned to the state before the quarantine rules became effective.

On the day that Rasmussen posted a picture of herself in St. George, Utah, the Legislature extended the quarantine to two weeks.

"We're not in a normal world. It's turned upside-down," Speaker of the House Bryce Edgmon, I-Dillingham, said at the time.

After the Legislature's action, Rasmussen asked for a legal opinion. Legislative attorney Marie Marx said it wasn't clear whether Rasmussen could be forced to stay away.

In the end, she decided to quarantine for two weeks at home after returning to Anchorage on March 17.

"I appreciate that she's going to observe that, and she's really torn up," House Minority Leader Lance Pruitt, R-Anchorage, said at the time.

Rasmussen didn't exit quarantine until April 1. By then, the Legislature had passed the state budget, authorized a statewide COVID-19 emergency, and quit Juneau until May, setting a speed record for budgetary work.

At the time Rasmussen left, did anyone know the quarantine rule was coming?

"The short answer on that is no," said House Rules Committee Chairman Chuck Kopp, R-Anchorage.

"I don't think anybody could have seen it coming that early on in March," said House Majority Leader Steve Thompson, R-Fairbanks.

Kopp said that while no one in the Capitol foresaw a quarantine, "It was understood by every legislator and every staff member was that the situation was evolving dramatically."

Rasmussen said on Friday that the problem she faced is one that other lawmakers will deal with in 2021.

"The pandemic isn't over. We need to find ways that we can use technology to still be able to conduct policy for our state," she said.

With the benefit of hindsight, would she have still gone on the trip?

"I think that everything is always different when we can see outcomes that weren't expected," she said. "I didn't expect a shutdown at the levels we saw. We learned a lot about the virus in a short period of time, and information was changing sometimes hourly. I would never want to miss the ability to vote for two weeks. It's a commitment I take very seriously."

CRIME AND COURTS

2 Alaskans charged in violent crimes connected to white supremacist prison gang

Tess Williams
Anchorage Daily News

Two people were charged in connection with violent crimes tied to a prison-based white supremacist gang, the U.S. Attorney's Office for the District of Alaska said Wednesday.

The gang is known as the 1488s and members have been indicted on kidnapping, murder and assault charges during the last few years.

Justin Eaton, 45, of Anchorage and Felicia King, 55, of Wasilla joined several others in an indictment for what prosecutors say was a wide-ranging racketeering enterprise born out of an allegiance to the 1488 gang.

King was charged with accessory after the fact in connection with the beating, kidnapping and killing of 32-year-old gang member Michael Staton in August 2017, according to federal prosecutors.

Eaton, also known as "Skulls," was charged with racketeer influenced and corrupt organizations, or RICO, conspiracy, kidnapping and assault for his alleged role in the April 2017 beating of a former member.

Several defendants in the original indictment — including Filthy Fuhrer, who legally changed his name from Timothy Lobdell; Roy Naughton, known as "Thumper," 40; Glen Baldwin, known as "Glen Dog," 37; Craig King, referred to as "Oakie," 53; Colter O'Dell, 26; and Beau Cook, 32 — faced multiple racketeering-related charges, including murder, kidnapping and assault, tied to the killing of Staton.

Of the original defendants, all but Cook were charged in a RICO conspiracy. Naughton and Fuhrer additionally were charged with kidnapping and assault in aid of racketeering, in connection with incidents that happened in April 2017 and July 2017.

A joint investigation began in late 2017 and has resulted in 14 additional federal indictments related to the gang, according to Wednesday's statement from Alaska U.S. Attorney Bryan Schroder.

Fuhrer was a founding member of the group, which operated mainly out of the maximum-security Spring Creek Correctional Center, according to the indictment. The gang now operates in and out of prisons elsewhere in the country, investigators said.

Potential members are recruited and then required to serve a prison sentence before they can join the gang, according to the indictment. Members gain rank by committing crimes, the indictment said.

The group operates according to a widely distributed set of written rules that outline the structural order and

The most serious crimes — murder in aid of racketeering and kidnapping resulting in death, in aid of racketeering — are punishable by mandatory life sentences.

rank of members, prosecutors said. Members identify through Nazi symbols and must commit violence on behalf of the gang before they're able to get a tattoo, or "patch," indicating that they're a high-ranking member.

Around 2016, Fuhrer became concerned that other members would disobey the rules while he was incarcerated, the indictment said. In order to enforce discipline within the gang, he allowed members to impose violent punishment on those who had disobeyed, the indictment said.

In 2017, Naughton had become upset with Staton, who also went by the name "Steak Knife," and asked Fuhrer for permission to "violently discipline Staton, because he had stolen from the Hells Angels and Naughton himself," the indictment said. Fuhrer agreed and gang members took him to an abandoned Wasilla home, where he was beaten and later shoved into the trunk of a car and taken to Craig and Felicia King's home, the indictment said.

Gang members had prepared an empty room with painting plastic in anticipation of beating Staton, according to the indictment. He was later wrapped in plastic and carpet, thrown in the trunk of a vehicle and taken to the woods, where O'Dell and Baldwin fatally shot him and burned his body, the indictment said.

Two other 1488 members, Nicholas M. Kozorra, 29, known as "Beast," and Dustin J. Clowers, 34, previously pleaded guilty to murder in aid of racketeering. Cook also pleaded guilty to kidnapping for his role in Staton's death.

The most serious crimes — murder in aid of racketeering and kidnapping resulting in death, in aid of racketeering — are punishable by mandatory life sentences, prosecutors said.

"Violent, race-motivated gangs don't belong in Alaska's communities, and those who engage in such violence will be aggressively pursued and held accountable," said Robert Britt, Special Agent in Charge of the FBI Anchorage Field Office. "Today's additional charges exemplify the FBI's commitment in using a task force approach to disrupt and dismantle criminal organizations wherever they may surface."

INTERIOR

Collision near Fairbanks leaves truck driver dead

Anchorage Daily News

A collision early Tuesday involving a water tanker and a volunteer fire department pickup along the snowy Parks Highway near Fairbanks left one man dead, Alaska State Troopers said.

An Ester Volunteer Fire Department pickup driven by 22-year-old Emma Ison of Fairbanks was northbound on the highway near Mile 354 around 8:30 a.m. when she started to pass a

slower-moving vehicle in the other northbound lane, troopers said in an online statement. The pickup went out of control and crossed into oncoming traffic lanes, where it struck a Pioneer Wells water-hauling tanker.

Troopers said Ison tried to help the other driver, 36-year-old Dewey Frost of North Pole, after the crash. Frost was trapped inside the truck and died of his injuries, troopers said.

The highway remained

dangerous Wednesday morning, and the state Department of Transportation said travel would be difficult in the area because of ice, packed snow and fresh snow on the roadway.

Troopers said the crash is under investigation.

ANCHORAGE

Assembly to consider special election for mayor at Nov. 4 meeting

Aubrey Wieber
Anchorage Daily News

The Anchorage Assembly plans to vote Nov. 4 on whether to hold a special election for mayor this winter.

A resolution sponsored by Assembly members Crystal Kennedy, Jamie Allard and Kameron Perez-Verdia would create a special election on Jan. 26.

The resolution was originally on this week's agenda, but the meeting ended before the body took it up.

Also on the Wednesday agenda is a public hearing for an ordinance from Assemblyman John Weddleton, which would have the winner of the April mayoral election take office upon certification of the results, rather than wait until July.

Acting Mayor Austin Quinn-Davidson was sworn into office Friday evening, after former Mayor Ethan Berkowitz resigned after acknowledging an "inappropriate messaging relationship" with a reporter.

After Berkowitz announced his resignation, the Assembly voted to reorganize the body, as the chair becomes acting mayor until a new one is elected. Quinn-Davidson was selected.

The next regularly scheduled mayoral election is in April, and the winner would normally take office in July. However, some felt that's too long to have an unelected mayor leading the city.

Any candidate eligible for the April election would be eligible for a special election, but like the regular election, the winner needs to get at least 45% of the vote.

More than 10 candidates have filed letters of intent with the state for that position, making a runoff for a special and general election likely.

City clerk Barbara Jones said the city estimated a special election to cost about \$350,000 and a runoff could cost around another \$323,000.

That candidate would have to win again in the April election to remain mayor.

The resolution to hold a special election needs six votes to pass, which is more difficult than usual since Quinn-Davidson, as acting mayor, will not vote. Neither will Forrest Dunbar, who is running for mayor. That would mean two-thirds of the voting members would need to support the resolution.

West Anchorage Snow Disposal Project
Project Management and Engineering No. 19-01


Online Open House
October 16, 2020 - November 20, 2020

Virtual Public Meeting
October 29, 2020
from 4:00 pm to 6:00 pm

Join Us!

Visit westanchoragesnow.com

The Municipality of Anchorage has collected information on potential locations for the placement of snow removed from West Anchorage streets. The Draft Site Selection Study is now available and a preferred location has been identified. Public feedback is important and will be considered during the final site selection process.



You are invited to attend a Public Open House to provide your feedback regarding the Site Selection Study results and the preferred site location for the West Anchorage Snow Disposal Project.

Visit www.westanchoragesnow.com for project information or to submit comments. You can also contact the project team at info@westanchoragesnow.com.



Get your Downtown Dining To-Go!

FREE curbside pickup provided by **EasyPark** and a full list of participating restaurants from the Anchorage Downtown Partnership.

Get started at: AnchorageDowntown.org

EasyPark
ANCHORAGE DOWNTOWN PARTNERSHIP



Election official Elaine Leibert prepares absentee ballots to be scanned and tabulated at the Division of Elections Region II office in Anchorage on Tuesday.

FROM PAGE A1
COUNT

independent challenger Alyse Galvin by 18 points, down from 26 on Election Day. U.S. Sen. Dan Sullivan led Democratic-endorsed independent Al Gross by 30 points on Election Day and now leads by 22 — 58% to 36%.

At the top of the ticket, President Donald Trump leads Democratic candidate Joe Biden by almost 20 points, or 58% to 38%, down from 29 points on Election Day.

Entering Tuesday, Gross, Galvin and Biden needed to win about 70% of all remaining votes in order to overcome Republican leads on Election Day. Instead, they won between 53% and 57%. That means they must win a much greater percentage of the remaining 100,000 or so uncounted ballots to win.

Following Tuesday's batch of results, the Gross campaign sent out a statement saying the race remains too close to call. When asked if he is confident that future batches will more heavily favor Democrats, Gross campaign manager David Keith said "absolutely."

Gross would have to win more than three-fourths of the remaining ballots to win the election.

Matt Shuckerow, Sullivan's campaign manager, said the numbers reflect what the campaign anticipated, and Sullivan continues to hold a strong lead. He said he doesn't want to be critical of the Gross campaign's optimism, but eventually the numbers are undeniable. "I think ultimately our opponent is going to begin being far more realistic at what is happening," Shuckerow said.



Absentee ballots are scanned for tabulation at the Division of Elections Region II office.

The Galvin campaign declined to immediately comment on the new batch of results.

All judges on the ballot are leading and on pace to be retained by voters.

Ballot Measure 1, the proposed oil tax increase, continues to trail by a wide margin. Down by over 29 percentage points on Election Day, it still trails by a 23-point margin.

The story is different for Ballot Measure 2, the three-part election-reform measure. Behind by 13 percentage points on Election Day, it now trails by fewer than 7 points. If the state's remaining uncounted ballots follow the same pattern as Tuesday's result, the measure would win by about 4,000 votes.

Few state legislative races received definitive results. In Fairbanks, House District 1 was a notable exception. Two years after winning by a single vote, Republican Rep. Bart LeBon has a 733-vote lead over Democratic challenger Christopher Quist. Estimates indicate about 500 votes remain to be counted there.

In Anchorage, several Democratic incumbents who trailed on Election Day now lead by significant margins. Rep. Ivy Spohnholz trailed Republican Paul Bauer on Election Day, but she now leads by 13 percentage points. About 1,100 votes are uncounted in that race, but the remaining votes are expected to lean Democratic.

Democratic Sen. Bill Wielechowski, whose Anchorage district covers Spohnholz's House district, trailed on Election Day but now leads Republican opponent Madeline Gaiser by 16 percentage points and appears on track for the largest victory in his political career. About 11,000 votes have been tallied, and about 2,100 remain.

Rep. Chris Tuck leads Republican Kathy Henslee by about 5 percentage points with 6,401 votes tallied. About 1,000 votes remain to be counted. Tuck trailed Henslee by 13 percentage points on Election Day.

Two Democratic incumbents in Fairbanks — Rep. Adam Wool and Rep. Grier

Hopkins — also lead after trailing on Election Day.

Few votes were counted in the Anchorage House race between Republican incumbent Rep. Lance Pruitt and Democratic challenger Liz Snyder, or in the race between Anchorage Assemblywoman Suzanne LaFrance and Republican James Kaufman. The winner of the latter election will decide who replaces Rep. Jennifer Johnston.

Anchorage Republicans Mel Gillis and David Nelson saw their Election Day leads dwindle significantly. Nelson leads Democratic candidate Lyn Franks by only 126 votes with more than 1,000 to be counted. Both are seeking to replace Rep. Gabrielle LeDoux.

Gillis, an incumbent appointed by Gov. Mike Dunleavy, leads Democratic-endorsed independent Calvin Schrage by 166 votes with almost 1,900 still to be counted.

Statewide turnout is on pace to break the all-time record, with about 350,000 votes expected. The old record, set in 2008, saw 327,341 votes cast.

FROM PAGE A1
SLOW PACE

the part of election workers. Alaska waits a week after Election Day to start counting absentee and some early voting ballots. With high absentee voting due to the COVID-19 pandemic, the number of unprocessed ballots has been placed under a microscope.

On Tuesday, several people questioned the Division of Elections on social media, asking officials to explain how the unique weeklong delay improves integrity.

"We can ask the appropriate people for that information and try to give you an explanation," the elections division responded on Twitter.

"More than anything, it's an inconvenience for folks who are trying to figure out if they're elected or not elected. But the real danger with a slow count is if the public feels there's something wrong with the process. And in my view, they're right. We do need to clarify this in the upcoming Legislature," Kawasaki said.

Alaska is the only state in the nation that delays the counting of absentee ballots until at least after Election Day. Gail Fenuimiai, director of the Alaska Division of Elections, has previously said that delay is needed because the state compares signature books at Election Day polling stations with absentee ballots submitted by voters.

Until the books return from the state's 400-plus polling stations to regional counting facilities, absentee ballots can't be fully processed.

But in 2016 and 2018, Alaska used a different procedure common in other states. If someone requested an absentee ballot, their local poll book contained a warning label indicating that they had done so.

If they wanted to vote in person instead of through the mail, they either had to vote a questioned ballot — which would be subject to additional post-election review — or bring their blank absentee ballot to the polls as proof that they hadn't voted twice. Poll workers were instructed to tear up the absentee ballot in front of the voter to make sure.

That procedure allowed some absentee ballots to be counted on Election Day because officials could guarantee their validity ahead of time.

Alaska law also restricts the amount of pre-processing that can be done before Election Day. Some states allow election workers to examine absentee ballots three weeks before Election Day, according to analysis by the National Conference of State Legislatures. Alaska's absentee ballot review board isn't convened until a

Alaska is the only state in the nation that delays the counting of absentee ballots until at least after Election Day.

week before Election Day. Pennsylvania, which similarly restricts absentee ballot review, hired multiple shifts of election workers to process ballots faster. Alaska did hire additional workers this year to deal with a record absentee turnout, but it does not appear to have done so to the extent that Pennsylvania did.

Lt. Gov. Kevin Meyer, the elected official in charge of the state's elections, has declined multiple interview requests from the Daily News, including one on Tuesday afternoon when his spokesperson said he was unavailable.

Meyer did give an interview on the election process on a conservative talk radio show Tuesday morning, saying his goal is to keep elections normal despite an abnormal year.

The Daily News sent a list of questions to Meyer and his staff, including whether Alaska's system provides more security than other states and whether Meyer is happy with how the election has been run. He did not respond.

While some have been quick to publicly voice frustration, Alaska's congressional campaigns have shown patience. Challengers Al Gross and Alyse Galvin are fighting the large leads that U.S. Sen. Dan Sullivan and U.S. Rep. Don Young secured on election night and the following day. Both the Gross and Galvin campaigns have said they believe early and absentee voting could favor them enough to come back and win.

Matt Shuckerow, Sullivan's campaign manger, said the campaign will look back at the process after the election, and said he expects the state and Legislature will do the same. But he has confidence in the integrity of the system.

"In a perfect world, we would have loved to have our results sooner, to have more clarity in this election, but we're patient," Shuckerow said.

David Keith, campaign manager for Al Gross, also said he is not frustrated with the delayed results. He characterized it as "enhanced anticipation."

Despite the state's slow start, Alaska law demands that the state finish counting no more than 15 days after Election Day, and the election is scheduled to be certified by Nov. 25. If it does so, the state will finish ahead of at least 19 others, which have later deadlines or none at all.

Cottage deep clean uncovers a relationship mess

Q. Dear Amy: I have been with my partner for six years. We are both 30. We live together and own a small cottage together outside of the city.

His parents are very kind people, but they don't seem to want to allow my partner to grow up and be independent.

The most recent, and so far most aggravating aspect of this is that his parents were supposed to stay at our cottage over a long weekend. Instead of relaxing and enjoying themselves as they promised, they secretly went just to do a deep clean, started little projects around the house, and fixed up minor things, which we were preparing to do ourselves.

I felt guilty for the work they did, in addition to feeling like our place wasn't sufficiently clean for them.

This may seem like a dream to others, but to me, it is just another way which I feel my partner (who is the youngest of three), has shirked his responsibilities and failed to grow up!

I am the oldest of three, and I've always fixed things on my own.

Currently, we have a leaking faucet. Our own plumber said that we could do this on our own pretty easily.

I would like us to work

together to fix it, but he just wants to call up his parents to have them come and take care of it.

How can I approach this situation (and future projects), without sounding selfish and ungrateful for their kind efforts to help?

I've grown up faster than my partner has.

— Independent

A. Dear Independent: For many people, doing little jobs around a cottage is as restful and relaxed as they can handle.

However, while some people might interpret family members "deep cleaning" their home as a welcome gift, you don't like it (I wouldn't, either).

You seem to see this as an indictment of your partner and his parents; I see this as a boundary issue which you, as an independent person and homeowner, can address.

You could say to them, "Wow, you really did a deep clean when you stayed at the house. I honestly wish you hadn't. Also, I know it might be frustrating for you to see these little things around the house that need to be fixed, but we want to fix them on our own."

If you believe that fixing a leaky faucet on your own is a sign of adulthood, then

fix it. There are plenty of YouTube videos available to demonstrate basic home repair (or you could ask your guy's mom to show you). It is a one-person job, so get started.

In many families, "acts of service" are how family members express their love. Letting these people be useful at things they are obviously good at might be a kindness to them. But you get to set the boundaries.

Q. Dear Amy: I'm sure you are getting a lot of mail about attending weddings in the time of COVID.

Here's my dilemma: My niece is getting married in May 2021 in another state. My husband and I are not sure that it will be safe for us to travel across the country to attend her wedding. My sister-in-law keeps talking about it as if it is a given that we'll be there. What should we tell her?

— Worried About Wedding

A. Dear Worried: You should tell your sister-in-law that you are crossing your fingers that you will be able to travel safely to this wedding, but that so far, you just don't know.

Ask her to be frank with you about the deadline for making your decision, and promise to let her know

before that date.

The pandemic has forced most families to recalculate their plans. One thing I hope we have all learned is that each person needs to be responsible for their own safety, comfort, and health, regardless of the pressure they may feel to override their own judgment for the sake of appearances.

Q. Dear Amy: "Heartbroken" relayed his pain

when his long-time partner stayed with him through his battle with cancer, and then left after he recovered.

For years, I ran a support network for brain tumor patients at a medical center in Cleveland and was amazed at how many couples broke up when one was diagnosed.

Your answer was correct, compassionate and wise. Heartbroken will do better with someone else, but will not understand



AMY DICKINSON
ASK AMY

that until later.
— Supportive

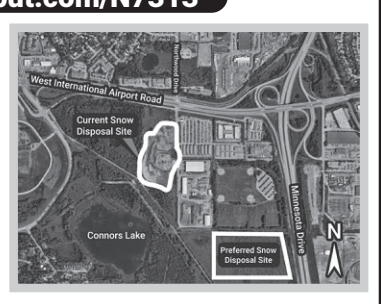
A. Dear Supportive: True understanding most often appears in the rearview mirror.

Contact Amy Dickinson at askamy@amydickinson.com or Ask Amy, P.O. Box 194, Freeville, NY 13068. You can also follow her on Twitter @askingamy or "like" her on Facebook.

West Anchorage Snow Disposal Project
Project Management and Engineering No. 19-01

Please Join Us at the Anchorage Transportation Fair!
Date: Wednesday, November 18, 2020
Time: 4:00 PM – 7:00 PM
Location: <https://publicinput.com/N7313>

The Municipality of Anchorage has collected information on potential locations for the placement of snow removed from West Anchorage streets. The Draft Site Selection Study is now available, and Connor's Bog has been identified as the preferred location. Public feedback is important and will be considered during the final site selection process.



Please join us at the project's online Anchorage Transportation Fair Booth to provide your feedback regarding the Draft Site Selection Study and the preferred location for the West Anchorage Snow Disposal Project.

The comment period ends November 20, 2020. Visit www.westanchoragesnow.com for project information and to submit comments. You can also contact the project team at info@westanchoragesnow.com.



Attachment C

E-Blast



West Anchorage Snow Disposal Project



Please Join Us!

West Anchorage Snow Disposal Project

Virtual Public Meeting

Thursday, October 29, 2020

4:00 pm – 6:00 pm

www.westanchoragesnow.com

The Municipality of Anchorage has collected information on potential locations for the placement of snow removed from West Anchorage streets. The Draft Site Selection Study is now available and a preferred location has been identified. Public feedback is important and will be considered during the final site selection process.

You are invited to attend an Online Open House to provide your feedback regarding the Site Selection Study results and the preferred site location for the West Anchorage Snow Disposal Project.

Visit www.westanchoragesnow.com for project information or to submit comments. You can also contact the project team at info@westanchoragesnow.com

Project Management and Engineering No. 19-01





Attachment D

Project Flyer



West Anchorage Snow Disposal Project

Project Management and Engineering No. 19-01

Please Join Us!



Virtual Public Meeting

Thursday, October 29, 2020

4:00 pm – 6:00 pm

westanchoragesnow.com

Online open house will be available **October 16, 2020 to November 20, 2020.**



The Municipality of Anchorage has collected information on potential locations for the placement of snow removed from West Anchorage streets. The Draft Site Selection Study is now available and a preferred location has been identified. Public feedback is important and will be considered during the final site selection process.

You are invited to attend an Online Open House and Virtual Public Meeting to provide your feedback regarding the Site Selection Study results and the preferred site location for the West Anchorage Snow Disposal Project.

Visit www.westanchoragesnow.com for project information or to submit comments. You can also contact the project team at info@westanchoragesnow.com.



Attachment E

Comment Log

West Anchorage Snow Disposal Project Phase Two Comment Log									
Comment Number	Date	Comment Type	Commenter	Contact Information	Organization	Comment	Response Date	Responded By	Response
1	10/28/2020	Email to Melinda Tsu	Cathy Gelason	cathy_gleasantcc@yahoo.com	Public	Voicemail left for Melinda Tsu requesting a copy of the draft site selection study	10/28/2020	Melinda Tsu	Hello Cathy, I received your voice mail requesting a copy of the draft site selection study. If you can join our meeting tomorrow evening, that would be great. And if you are not able to join the meeting, please feel free to provide comments either through the project website comment or to PM&E by November 20th. Best Regards,
								Josie Wilson	Cathy – hope you can join us! All – the Site Selection Study is also available online at: https://www.westanchoragesnow.com/ Looking forward, ~Josie
2a	10/29/2020	Virtual Meeting	Chad Wilson	chadwilsoncar@aol.com	Public	How was the site decided?	10/29/2020	Bill Spencer	Chad, greeting this is Bill Spencer, Project lead at HDR, We went through a study and site selection process that produced Connor's as the preferred alternative. We are of course still collecting information and this meeting is part of that process. I could walk you through the reasoning, do you have any particular area of interest.
2b								Bill Spencer	If you have the time you can go to the site and have a look at the site selection study, it lists all the parameters we looked at and the winnowing down of possible sites to the preferred alternative. It is a gripping read, bring a cup of strong coffee.
2c								Bill Spencer	That would explain why she suggested that I answer your inquiry ;), my wife would have probably done the same. The crux of it comes down to finding a site in the snow removal area to be serviced, that the city owned (low cost), with relatively low impacts to neighbors and agility to be operated at night when most of the snow removal operation take place.
2d								Bill Spencer	We'll try to get her freed up in time for dinner
3a								Josie Wilson	Hi Cathy! Thanks for joining us. This is Josie. We have the entire project team on this virtual chat available. No formal presentation. ;)
3b	Melinda Tsu	Hello Cathy! This is Melinda Tsu. Thanks for joining us tonight! To answer your question, yes the preferred site is the Connor's Bog site south of Dela Vega field. -- Melinda							
3c	Melinda Tsu	True that the site is not dedicated parkland as you noted. PM&E and the project team has involved Parks and Rec in the site selection process. We also provided an information item about the preferred site, Connor's Bog, to the Parks Commission and the Parks provided a staff report confirming their support of the identified site.							
3d	Melinda Tsu	It was on the September 10, 2020 Parks Commission meeting. There was no formal action item, but the Commission did not express any objection and just asked to be kept informed.							
3e	Melinda Tsu	The Parks Commission does not have a formal role in this project and therefore this item was not advertised to the public. However, when PM&E attended the meeting, we did specify that PM&E has a public involvement process and we will be collecting input and feedback that we receive about the site selection process and the preferred site identified.							
3f	Josie Wilson	Hi Cathy! This is Josie. I wanted to also let you know that the meeting today is being recorded as part of the public record. We will make sure your comments and questions are represented as the project goes through the process. ;) So, thank you! We appreciate you participating.							
3g	Julie Makela	Hello! This is Julie Makela. I'm the project administrator. We recognize this is a valuable park and natural area. We explored to the maximum extent possible site location that meet Street Maintenance's criteria for a cost effective operation. We know there are pros and cons to the preferred site.							
3h	Julie Makela	I don't believe we mentioned it in the draft but this is a great point. We will include this in our analysis and final version.							
3i	Julie Makela	After finalizing the Site Selection Study, our next step is to go to the USACE to get a jurisdictional determination and lay out a path for permitting (if required).							
3j		Definitely would like to see the public involved in that discussion, to ensure the remaining wetlands in this area will not be subject to future 'Industrial' type of uses.							

3k	10/29/2020	Virtual Meeting	Cathy Gleason	cathy.gleason@turnagain.com cathy.gleason@yahoo.com	Turnagain Community Council	10/29/2020	<p>Would any 'treatment' of snow melt runoff be required before it is discharged into remaining Connor's Bog/Lake?</p> <p>Thank you — lack of appropriate treatment and cost of installation at the Airport snow disposal site (as well as no long-term lease) seemed to be the tipping point for the Muni to find a new disposal site. Having said that, though, TCC has received an Airport lease application notice from the Muni to use the Airport snow disposal site for this winter season (Nov. 1, 2020 through June 30, 2021). Are you aware of this lease proposal? I'm assuming the Muni is not planning to spend capital for any treatment operations that supposedly was being required for this site, since it seems to be a short-term lease. Do you have info. on this? It's a little confusing from a public perspective that public comment is occurring for two different Muni snow disposal projects at the same time.</p> <p>Back to the Connor's Bog recommended snow disposal site: The criteria for a new site includes "a minimum of 10 acres of unused land, ideally at least 15 acres." The recommended Connor's Bog site is 32 acres, which is way over this criteria acreage footprint. What is the justification for this large of a disposal site, when recommended site size in the study is far smaller. Reducing the site footprint to, say 20 acres, would still be much larger than the size criteria identified in the site study. This would result in a lower project cost and reduced the environmental impact on on high-value Class A wetlands. Unless the public is provided reasonable justification to increase the site acreage criteria, I see no reason for filling/developing 32 acres for this project — just because the land mass exists.</p> <p>Thanks, Bill. A more detailed breakdown and site development graphic would be beneficial to understand the acreage usage for the project. Since we're at the 30,000-foot level of the design in what's provided in this site study, it will be important to see more detail ASAP, so that public comment can address specifics. One thing I think will be important from a purely aesthetic perspective is preserving a large area of wetlands/upland vegetation between the disposal development and Minnesota Dr. — essentially making it 'invisible' from this main thoroughfare. Preserving a natural buffer would definitely be preferable to more wetland filling and building a large, artificially-looking landscaped berm along Minnesota.</p> <p>I see it's 6:00 p.m. — time to figure out what we're having for dinner! Thank you, very much, for your time and providing important feedback to my questions and comments. Will both Qs and As of this chat be available on the project website soon (i.e., before the comment deadline)? Again, many thanks!</p>	<p>Cathy, this is Bill Spencer water resource engineering lead for HDR. Unlike the current site this new site will be designed with treatment structures. The primary pollutants that come out of meltwater are chloride and sediment (turbidity). We have Scott Wheaton (MOA's retired watershed scientist) on our team and will take a close look at the ADEC requirements for discharge and how to meet them. Settlement and detention ponds will be part of the mix as will structures to disperse the meltwater into the wetlands to help with continued hydration or the remaining wetlands. The current site also discharges into these wetlands but without extensive treatment. Most of that water flows directly downslope to the lake and has limited positive impact on the wetlands. While we definitely will have a negatively impact on the wetlands where the snow is deposited we are hoping to have a positive affect on the remaining wetlands.</p> <p>Bill Spencer</p> <p>Melinda Tsu</p> <p>Josie Wilson</p> <p>Bill Spencer</p> <p>Julie Makela</p> <p>Josie Wilson</p>
3l							<p>This is Melinda Tsu again. Very relevant question Cathy. PM&E is aware that the Real Estate Department is pursuing a short term lease for use of the Airport property for the municipality to continue to use that site for snow disposal use. This is necessary for the interim until a permanent site that is owned by the MOA. This project still has many steps to work through beyond confirming the final site selection, including agency permitting and design. Therefore this short term lease is needed until the permanent site is constructed and ready for operation, which is not anticipated until 2021 or 2022 depending on the development process and method of construction.</p>	
3m							<p>Hi Cathy, this is Josie again. I was honestly unaware about the other public comment period on the other snow project. Thanks for letting me know. I really appreciate it. I think it could be confusing so any advice is appreciated on how to make it more clear. I know the team wanted to release the draft site selection study as soon as possible. Hopefully, with the Online Open House being available for a while, that will help. If you have any thoughts to clarify or help communication for this project, I welcome your advice. :)</p>	
3n							<p>Cathy, Bill again, the actual depositional area is proposed to be 10-15 acres, there will be a small additional footprint for access roads, berms and water quality structures. The site selection study chose the 32 acre parcel as the recommended site but the actual snow disposal infrastructure will only utilize about half of the parcel as shown on the site selection graphic. Creating the fill pad for the snow deposition area will be the major cost of creating the site and will be kept to the minimum needed by street maintenance. We will need to clarify that point in the document. Thanks for pointing out that inconsistency.</p>	
3o							<p>Hi this is Julie again. Great point! We can clarify in the final site selection study the impact won't be to the entire 32 acre parcel. These are great points for the design consideration. We will be starting the design after USACE permitting.</p>	
3p							<p>Hi Cathy, this is Josie. From the project team, we all want to thank you. Your questions and comments have been helpful and insightful. We do intend to post the comment spreadsheet. And based on your suggestion, the team is going to post something online. So, thank you! :)</p> <p>Take care. :)</p>	
4a	11/2/2020	Email	Shaun Debenham	2960 C Street, Suite 202 Anchorage, AK 99503 P: (907) 562-9330 E: shaun@debenhamproperties.com	Debenham Properties	11/5/2020	<p>Josie, I just got a postcard in the mail looking for feedback on a site selection for the new snow disposal site. I do not support the Strawberry Bog site. We own the multi-family complex directly west of this site (The Residences at Northwood) and having a 24/7 snow disposal site adjacent to our apartments would adversely affect our tenants. Many of our tenants select our apartments due to the quiet area that they are in. In addition to this, we are in the process of developing another 150+ units of housing in this area which would also be adversely affected by a loud, ugly 24/7 snow dump. Please do not select the Strawberry Bog site. I do favor the Connor's Bog site. This is better because it is not near developed areas.</p> <p>Thank you, Shaun Debenham Shaun T. Debenham Debenham Properties President 2960 C Street, Suite 202 Anchorage, AK 99503 P: (907) 562-9330 E: shaun@debenhamproperties.com</p> <p>Greetings Mr. Debenham,</p> <p>Thank you for taking the time to provide comments. The Draft Site Selection Study does identify Connor's Bog as the preferred site.</p> <p>Public comment is an important part of the selection process and your preference has been documented. If you are interested in being added to the project list and receive email updates, please let us know. Updates will also be posted to the project website at www.westanchorage-snow.com. Again, thank you for your involvement and input. We appreciate it.</p> <p>Thank you, Josie Wilson</p>	

4b	11/5/2020					Thank you Josie. Yes, if you could add me to the email updates, that would be awesome. Thanks. Shaun T. Debenham Debenham Properties President 2960 C Street, Suite 202 Anchorage, AK 99503 P: (907) 562-9330 E: shaun@debenhamproperties.com			No response required
5	11/2/2020	Email	Jana Barlow			Hi, I would just like to comment on the snow "removal". I live in a cul de sac on Borland Circle in West Anchorage. The snow is rarely, if ever removed from the cul de sacs. We are treated as second class citizens. The snow mountains in the middle of our cul de sacs makes it difficult to back out of our driveways and can possibly impede any fire trucks or ambulances that might have to come through especially if someone is parked outside of their driveways. There are five homes with elderly people here. Neighbors add to the giant mountain of snow when shoveling and one set of kids drive their four wheelers over it and play on it. It is maddening to have these giant mountains of snow and one of the reasons that I would love to leave here. Can you please consider adding the cul de sacs to the list of removal to the snow dumps? Very few people will see the ad for this project in the newspaper as it is small and people don't pay attention. Thank you, Jana Barlow	11/6/2020	Josie Wilson	Greetings Jana, Thank you for taking the time to notify the Project Management and Engineering Department (PM&E) about your concerns. We are so sorry to hear about the snow plowing issues. At PM&E, we take every public comment and feedback as valuable. We will share your concerns and frustrations with the Operations and Maintenance team to see if there is anything that can be done. We also wanted you to be aware of the Municipality of Anchorage's Street Maintenance Dispatch Center at 343-8277. We encourage you to call them when snow plowing is needed on your street during winter. If you have any questions on the West Anchorage Snow Disposal Site Selection Project, please let us know. We would be happy to add your email to the project list for receiving email updates on this project if you desire to be kept informed. All emails are kept confidential and used for this project only. Updates will also be posted to the project website at www.westanchoragesnow.com . Again, thank you for your involvement and input. We appreciate it. Thank you, Josie Wilson
6	11/11/2020	Email	Karen Cody	theavery12@gmail.com	Public	I am completely supportive of snow removal placement at Connors bog. For 5+ years I have been part of a nationwide project to track existence and numbers of vulnerable bird species in wetlands. This past year I was shocked at the low low level of the water and talked with a knowledgeable person in the muni about it. The bog apparently is not stream fed but derives it's water from rainfall and snow removal piles. Two years of low rainfall and snow took a toll on a very special much loved lake that supports an amazing variety of wildlife including vulnerable bird species. The snow removal piles may very well make a huge difference in the survival of Connors bog, I so thank you for selecting it. Not to dramatize but this is an answer to one of my prayers. My gratitude to you Karen Coady 602-3111 6521 Bridget circle 99502	11/17/2020	Josie Wilson	Greetings Karen, Thank you for taking the time to provide a comment on the Draft Site Selection Study. Your comment really means a lot to us and we are glad that the preferred site location identified could be a potential blessing for vulnerable bird species. We certainly hope this to be the case! Public comment is an important part of the process and your comment will be included in our documentation. If you are interested in being added to the project list and receive email updates, please let us know. Updates will also be posted to the project website at https://www.westanchoragesnow.com/ . We also welcome any information you can share on how this project could benefit sensitive bird populations. Again, thank you for your involvement and input. We appreciate it. Thank you, Josie Wilson
7	11/17/2020	Email	Karen Cody	theavery12@gmail.com	Public	Yes I would be so grateful to be added to your update list and I thank you for your considerate and sensitive response to my email Karen Coady		Josie Wilson	Hi Karen, We added you to the project email list. Again, please do not hesitate to reach out with any future comments or questions. We appreciate you. Thank you for your kind words. All the best, Project Team
8	11/20/2020	Email	Karen Cody	theavery12@gmail.com	Public	And I am so grateful to you for using Connor bog. Now the special and vulnerable birds who have thrived there including red necked grebe couples will have a chance. In a bleak year you have been a huge beam of sunlight			No response required
9	11/20/2020	Email	Cherie Northon	cherie@anchoragecreeks.org	Anchorage Waterways Council	Hello, Attached is a copy of our comment letter for this proposed project. Thank you, Cherie Letter: To whom it may concern, AWC is committed to the protection of the waterways and wetlands within the MOA, and therefore has some strong concerns about the proposed "preferred alternative" known as Site 5 in the West Anchorage Snow Disposal - Draft Site Selection Study. It is agreed by AWC and the West Anchorage Snow Disposal Site team that this site, specifically, and Connors Bog, in general, are the highest value Class A wetlands. Accordingly, there is the utmost need for them to be protected and carefully considered for impacts. 1. AWC believes that it would first be prudent to continue negotiations with the Ted Stevens International Airport in regard to a longer-term lease with the MOA for the existing "Northwood Site". 2. Although we disagree with the path forward, if the preferred site were to be developed, we would like to ensure that proper permitting and mitigation are completed pursuant to Section 404 of the Clean Water Act through the U.S. Army Corps of Engineers. Most sincerely, Isaac Watkins AWC Board President			Greetings Cherie, Thank you for sending us the letter from Isaac Watkins and the Anchorage Waterways Council. We appreciate the Anchorage Waterways Council's feedback concerning the preferred alternative site location of Connor's Bog. The Municipality of Anchorage's goal is to have the ability to own the land that the new site will be located on. This will increase the site's longevity and best serve the West Anchorage Communities during the winter months. As you mentioned, the existing site is located on land owned by Ted Stevens International Airport. Due to future plans for the site, however, a long-term lease or purchase option is not available. If the Connor's Bog site is chosen in the final Site Selection Study the needed and required permitting and mitigation will take place. Again, thank you for your involvement and input. All the best, West Anchorage Snow Disposal Project Team

10a					<p>West Anchorage Snow Disposal Site Project Team. Please accept the attached comments from Turnagain Community Council. Thank you, Josie, for allowing me to submit them beyond the stated deadline of last Friday. We hope to receive serious consideration of our letter, as the importance of Connor's Bog Class A wetlands to the West Anchorage community is significant. Don't hesitate to contact me, if you have any questions or need clarification on our input. Thank you, Cathy L. Gleason Turnagain Community Council President 248-0442</p>			
10b					<p>RE: West Anchorage Snow Disposal DRAFT Site Selection Study Dear West Anchorage Snow Disposal Site Project Team: Thank you for the opportunity to provide input on the West Anchorage Snow Disposal Draft Site Selection Study (Draft Study) prepared for the Municipality of Anchorage (MOA) Project Management and Engineering Department (PM&E). Turnagain Community Council (TCC) has reviewed this document and is respectfully requesting consideration of the following comments.</p>			
10c					<p>Review/Compliance of Municipal Planning Documents Lacking in Draft Study After initially considering 19 potential sites for a MOA snow disposal site in West Anchorage, the Site Selection Process outlined on page 7 of the Draft Study states, "Once an inventory was developed for initial site identification, each site was evaluated based on desired site characteristics to define the most suitable for further analysis." The Draft Study ultimately recommends Site #5: Connor's Bog for a West Anchorage snow disposal facility (pages ii & 22). However, this process did not include a very important step: with the exception of selective reference to the Anchorage Wetlands Management Plan, the process did not include assessment of the sites for compliance/conflicts with adopted Municipal land use/planning documents. Specifically, when evaluating Site #5: Connor's Bog for a West Anchorage snow disposal facility, the Draft Study did not determine whether this site is compatible with multiple adopted Municipal land use planning and policy documents that generally fall under the umbrella of the 2020 Anchorage Bowl Comprehensive Plan. While acknowledging that this site is located in Class A wetlands, the Draft Study comes to the conclusion that "#5: Connor's Bog Site is a very desirable snow disposal site... and has few drawbacks." (page 15). TCC strongly disagrees with this conclusion, based on important Municipal plans that clearly identify Connor's Bog as a high value natural open space that provides important values and functions for the west area of our community — and that these Class A wetlands should be preserved in their current, undeveloped state. These documents include:</p>			
10d					<p>2020 Anchorage Bowl Comprehensive Plan (adopted 2001) o Conceptual Natural Open Space Map identifies area of Site #5: Connor's Bog as "Community Preference for Natural Open Space," (identified by the public) and "Important Wildlife Habitat" (identified by local wildlife experts and scientific reports) (page 63)</p>			
10e					<p>Anchorage Park, Natural Resource & Recreation Facility Plan (adopted 2006) o Map 6: Natural Resource Use Areas designates area of Site #5: Connor's Bog area as "Municipal Park Lands" o Appendix B (pages 10-11): Class A wetlands are included in the category of "Natural Resource Preservation Land," and are defined as "Those areas that perform important environmental functions and have high ecological values" and "...should be permanently dedicated as NR Preservation Lands that can only be altered by a 60 percent vote of the community."</p>			
10f					<p>West Anchorage District Plan (WADP) (adopted 2012) o Exhibit 2-13: Parks and Open Space map designates Site #5: Connor's Bog area as "Parks" o Exhibit 2-14: Wetlands Classifications and Coastal Zone Boundary map designates Site #5: Connor's Bog area as "Class A (High Value)" o 2.5 Park, Recreation, and Open Space section states, "The Southwest Parks District...has a large concentration of Natural Resource Use areas (areas designated for preservation rather than public use)." This includes the Site #5 Connor's Bog area (page 49) o Exhibit 4-1b: Sand Lake Land Use Detail designates area of Site #5: Connor's Bog area as "Class A (High Value)" o Under "Parks Objective #4 Manage, protect and enhance municipal parks, greenbelts and natural open space areas (including riparian and wildlife corridors) that support fish and wildlife habitats and wetland functions." This section states, "The WADP recommends that high-value wetland parcels to be retained or acquired for permanent protection. Wetlands owned by the Municipality [which includes Site #5: Connor's Bog], should be preserved with a conservation easement or transferred to an appropriate public agency for long-term preservation and management."</p>			
10g					<p>Anchorage Wetlands Management Plan (adopted 2014) o Figure 4: Wetlands Designations/Anchorage Bowl – Southwest designates Site #5: Connor's Bog area located within Parcel #34 as Class "A" Wetlands o Table 4.1 Anchorage Bowl Wetland Designations, Enforceable and Administrative Policies, and Management Strategies states as an Enforceable Policy for Site #34 CONNOR'S-STRAWBERRY BOG: "Municipal lands within Connor's-Strawberry bog shall be managed for open space, wildlife habitat, and wetland functions." It also scores this wetland high in Hydrology (114); Habitat (138); Species (98); Social Function (80), and describes the area as "Significant waterbird migratory and nesting habitat complex." (page 52)</p>			

10h						<p>2040 Anchorage Land Use Plan (adopted 2017)</p> <ul style="list-style-type: none"> o Anchorage 2040 Land Use Plan Map identifies Site #5 Connor's Bog area as "Park or Natural Area" (Not "Community Facility or Institutions") o Park or Natural Area section of Plan states this land designation "provides for active and passive outdoor recreation needs, conservation of natural areas and greenbelts and trail connections." (page 51) <ul style="list-style-type: none"> o The Anchorage 2040 Land Use Plan Gallery Community Natural Assets identifies Site #5 Connor's Bog area as part of a "Natural Asset Hub" (one of 6 Hubs within the Anchorage Bowl), "Class A Wetlands," and an "Open Space and Important Habitat Intersect" (MOA website) 		
10i	11/23/2020	Email	Cathy Gleason	tccpresident@yahoo.com	Turnagain Community Council	<p>Over the years, TCC provided significant input during the development of each of the above specific Municipal plans. These important land use planning documents reflect expectation by the public, including TCC, that important natural open spaces, including the municipally-owned portions of Connor's Bog, would be permanently protected. At no time during the development of the above plans was construction of any Municipal or private facility that would significantly and negatively impact this area ever proposed or considered. Lack of any reference in the Draft Study to Municipal planning, implementation, and enforcement policies outlined above raises serious questions about the Draft Study's methodology and evaluation as to whether Site #5: Connor's Bog is an appropriate, or even allowable, location for a snow disposal facility. Unfortunately, the Draft Study minimizes significant development impacts, which results in delegitimizing the Draft Study's conclusion that Site #5: Connor's Bog "has few drawbacks."</p>		<p style="text-align: center;">Greetings Turnagain Community Council, Thank you for providing public comment on the West Anchorage Snow Disposal Site Selection Study Draft report.</p> <p>Hearing from community councils, like yours, helps us to make informed decisions. It also assists in making the best decision possible for this process. Thank you.</p> <p>We have fully documented your comment for the public record and sincerely appreciate the time you took in gathering and siting municipal plans and documents. We will review each one and discuss how to include and consider in the final site selection report. We will also include and convey this information as part of the decision-making process. It is our intent to find the best solution in accordance with the long-term Municipal plans.</p> <p>At this time, the Anchorage International Airport has expressed confirmation to the Municipality of Anchorage that it is appropriate to consider a new snow disposal site and not to plan on continued long-term use at the current Northwood site. Please be assured that if the proposed location of Connor's Bog is selected and a project progresses, all appropriate permitting and mitigation measures for protection of wetlands and wildlife will be followed as part of the project.</p> <p>Again, thank you for taking the time to submit your concerns and for your involvement. We sincerely appreciate the knowledge that the Turnagain Community Council brings to our community and this project. Sincerely, West Anchorage Snow Disposal Project Team</p>
10j						<p>Long-Term MOA Use of Snow Disposal Site at the Airport</p> <p>As referenced in the Draft Study (pages 1 & 3), the existing snow disposal site located on state land managed by the Ted Stevens Anchorage International Airport (Airport) has been used for West Anchorage Snow Service Area snow storage under short-term leases between MOA and the Airport. In the past, the MOA was unable to negotiate a long-term lease agreement that would allow the city to make required operational improvements, including those related to treatment of discharge from the site and water quality requirements due to its location in the area hydrologically connected to the Connor's Bog wetlands and drainage into those wetlands. This unresolved Airport-MOA long-term land use agreement has now resulted in the need for a new snow disposal facility site selection study.</p> <p>Unfortunately, the Draft Study did not put more emphasis on potential resolution of this issue before dismissing the option of a long-term Airport-MOA agreement and focusing on potential sites for a new facility.</p> <p>Despite its shortcomings, the MOA has applied for another short-term lease with the Airport for use of the existing snow disposal facility (ADA32308). Assuming this lease is approved, the city will have the use of this Airport snow disposal site for the 2020-2021 winter season.</p>		
10k						<p>While the Airport-owned site is located in the Connor's Bog area, there are two important distinctions with regard to the use of it as a snow disposal facility by the Municipality:</p> <ol style="list-style-type: none"> 1) MOA land use documents do not have the same natural resource preservation directives on the state-owned snow facility area within the Airport boundaries. For example, it is designated as "Major Transportation Facility" (the general category for all Airport property) in the WADP. 2) More significantly, contrary to the Draft Study's assertion that, "Due to future plans for the site, a long-term lease or purchase option [with the Airport] is not available" (page 1), the Ted Stevens Anchorage International Airport 2014 Master Plan, Appendix K – Airport Layout Plan, does not indicate any future plans for this site — other than the existing snow disposal facility. There also appears to be adequate land for enlarging the site to the required snow disposal facility acreage identified in the Draft Study (page 6). 3) And most importantly, the "ON-AIRPORT LAND USE PLAN (Appendix K, page 32 of 34) designates the larger Airport land parcel east of Runway 7L-25R as "Non-Aeronautical." This important designation allows for Municipal uses, including the existing snow disposal facility and Connor's Lake Park area for passive public recreational use. 		
10l						<p>Instead of moving forward with developing a new snow disposal facility in Site #5: Connor's Bog, TCC requests that the MOA and the Airport revisit executing a long-term lease that will enable continued MOA use and needed improvements of the existing snow disposal site. This much-preferred option would allow for needed MOA operational improvements in a manner that meets water quality regulations and other requirements, while eliminating the need to develop an additional snow disposal site in MOA-owned Connors Bog Class A wetlands, and avoiding significant and cumulative negative impacts to water quality, hydrology, natural open space and wildlife habitat in the larger Connor's Bog area owned by the Municipal.</p>		
10m						<p>How might that be accomplished? Having been part of previous discussions regarding Municipal use of Airport lands, key individuals were not part of the process, including the current Alaskan governor or our U.S. Congressional delegates. TCC recommends prompt Airport, Municipal and community engagement with these individuals (as well as West Anchorage State legislative officials), who have the influence and ability to direct the Airport sign a long-term lease with the Municipality for use of the current snow disposal facility, with required improvements on State land. This "non-aeronautical" use would:</p> <ol style="list-style-type: none"> 1) Conform to the Airport Land Use Plan; 2) Is permitted by FAA regulations; and 3) Would meet the needs of the MOA to provide an important snow disposal service for the West Anchorage community. 		

10n					<p>Mitigation Requests If Site #5: Connor's Bog is Developed</p> <p>If TCC's request and recommendations are not acted upon, and the MOA moves forward with selecting Site #5 Connor's Bog for development of a snow storage site — despite nonconformance with multiple Municipal land use documents — TCC is concerned about potential water quality, hydrology, wildlife habitat, aesthetics, and other impacts to the Connor's Bog complex.</p> <p>The below (and potentially other) measures would be far more appropriate for mitigating the snow disposal facility on Municipal lands than improving the Connor's Bog Dog Park parking area, which is referenced as mitigation on page 22. While it's something to consider, this alone would be completely inadequate to compensate for impacts that would be sustained on Class A wetlands, if the snow disposal site is developed at Site #5: Connor's Bog.</p>			
10o					<p>If Site #5: Connor's Bog is developed, TCC recommends comprehensive mitigation be required, including the following:</p> <ul style="list-style-type: none"> • Reduce overall acreage footprint of facility, as the Draft Study does not provide justification for use of 32 acres of Connor's Bog wetlands when it states, "The 15-acre size leaves adequate area for access roads, berms, water quality structures, screening, and property line setbacks." • Limit fencing and other constrictions that inhibit wildlife movement • Provide for visual buffering from Minnesota Dr. that does not impede appropriate hydrology • Require measures that would maintain natural drainage patterns and all other enforceable policies in the Anchorage Wetlands Management Plan • Permanently preserve as a condition of developing Site #5: Connor's Bog all remaining Municipally-owned Class A wetlands tracts within the Connor's Bog wetlands through dedicated parkland status or other appropriate measures, such as conservation easements, that would restrict future development — and concurrently rezone this land to PR District o This would specifically conform to Municipal planning management strategies for remaining MOA-owned Connor's Bog Class A wetlands referenced above in our comments • Conduct ongoing monitoring of remainder of the Connor's Bog wetland complex as part of the conditional use permit, to ensure operations of the snow disposal facility are not adversely affecting bird nesting, wildlife movement, hydrology/water quality of wetlands, etc. in the remainder wetlands complex. • Provide an opportunity to address the Parks and Recreation Advisory Commission regarding this project proposal, as West Anchorage community councils were not notified of this item on their September 10, 2020, agenda. TCC feels it was premature for the Commission to support use of Site #5: Connor's Bog for a snow disposal facility without public input/testimony on this significant proposal on Municipally-owned Class A wetlands. 			
10p					<p>Turnagain Community Council sincerely appreciates the work done to-date on the West Anchorage Snow Disposal Draft Site Selection Study — and the generous timeline provided to submit our comments. We hope you seriously consider the above comments, recommendations and requests before finalizing the document. Please let us know if you have any questions or need clarification about our comment letter.</p> <p>Best Regards, Cathy Gleason Turnagain Community Council President</p>			

Appendix D: Parcels Considered For Site Selection

Site Number	Parcel ID	Legal Description	Owner	Square Footage	Acres	Zoning
1	N/A	N/A East of Lake Hood Runway 14/32	State of Alaska - TSAIA	1,553,010	35.7	TR
2	010-244-28	Boettcher TR 3	Universal Financing Corp	434,009	10.0	R-3 SL
3	010-244-02	T13N R4W SEC 35 Parcel 10	MOA	656,483	15.1	R-1
4	012-571-02	T12N R4W SEC 1 W2NE4NW4	Chugach Electric Association	670,824	15.4	TR
5	012-571-01	T12N R4W SEC 1 NW4NW4 PTN	MOA MOA 5501	1,393,484	32.0	TR
6	012-041-07	Connors Lake TR B	MOA MOA 5501	751,410	17.3	TR
7	012-041-06	Connors Lake TR A1	MOA Heritage Land Bank	3,781,879	86.8	PLI
8	012-581-13	Raspberry Road Muni Land Sel LT 1 ASLS 97-10	MOA Heritage Land Bank	1,386,950	31.8	PLI
9	012-591-07	Raspberry Road Muni Land Sel LT 2 ASLS 97-10	MOA Heritage Land Bank	4,745,426	108.9	PLI
10	012-553-03	Strawberry Meadows TR G-1D	MOA Heritage Land Bank	671,875	15.4	R-4
11	012-151-59	Gladys Wood Park Tr 1	MOA MOA 5501	787,656	18.1	PLI
12	011-011-45	N/A - Area North of Delong Lake	State of Alaska - TSAIA	2,491,634	57.2	PLI
13	011-061-02	Sand Lake School Site TR A	State of Alaska - TSAIA	1,277,615	29.3	PLI
14	011-052-03	T12N R4W SEC 4 LT 8	Opal Investments	1,676,400	38.5	R-1
15	011-313-02	Westpark School Addition TR 7A	MOA - Parks & Rec	719,782	16.5	R-2A SL
16	011-321-73	Southwest Anchorage School Site TR 1	MOA School District	1,822,527	41.8	R-2A SL
17	011-162-42	Lancaster TR A	Anchorage Sand & Gravel Co	1,699,711	39.0	R-1A
18	011-201-92	Polen Park TR 1	Anchorage Sand & Gravel Co	1,170,181	26.9	R-1A
19	011-142-45	Mike Beirne Tr C	MOA Heritage Land Bank	1,689,431	38.8	R-1