



Primary Care Patient Medical Homes and Neighbourhoods Presentation

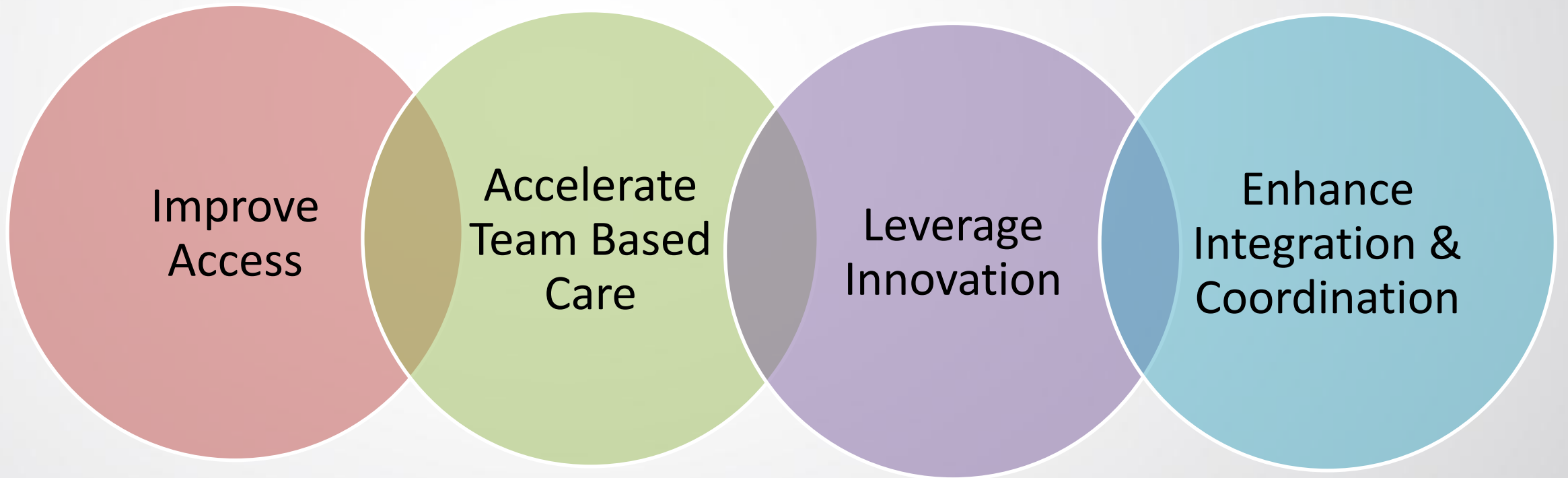
November 2021

Dr. Kathie McNally, Deborah Bradley & Corinne Rowsell

Vision for Transforming Health Services – Starting with Primary Care



Primary Care Roadmap - Priorities

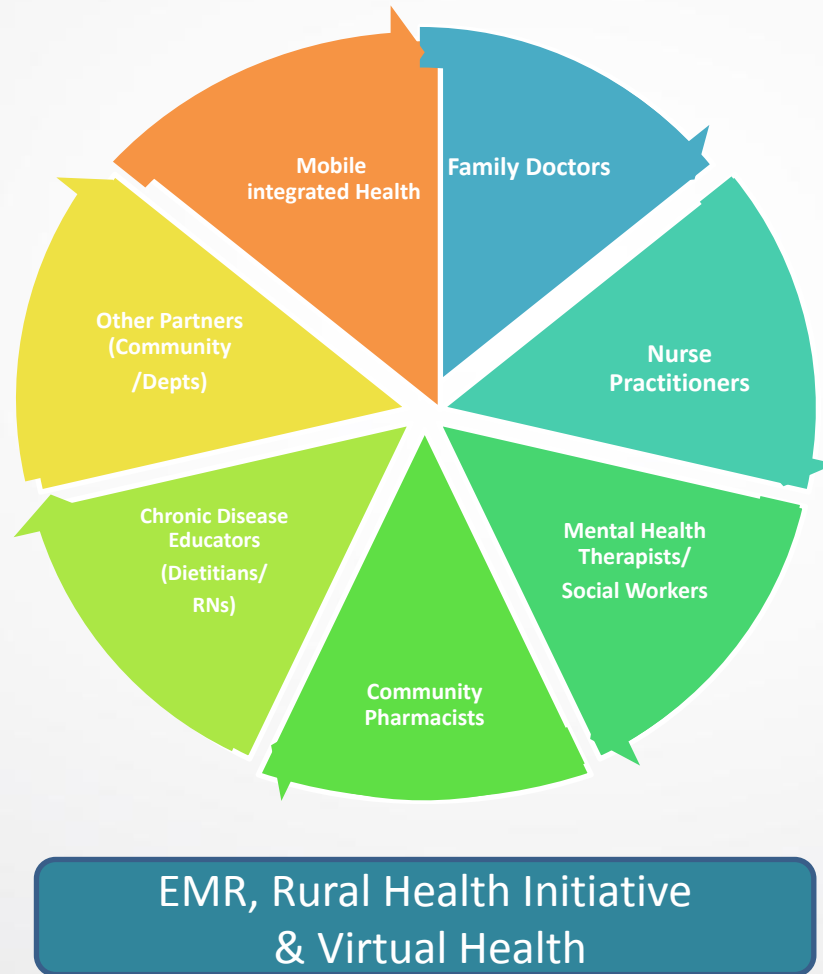


Patient Medical Home

“...a family practice defined by its patients as the place they feel most comfortable - most at home - to present and discuss their personal and family health and medical concerns...” – College of Family Physicians of Canada (CFPC)



Patient Medical Home/Primary Care Team



- Primary care teams address the needs of the local community by assessing these needs and offering the appropriate combination of services
- The composition of primary care teams may vary, depending on the requirements of the local community

PMH is Part of the Bigger Picture



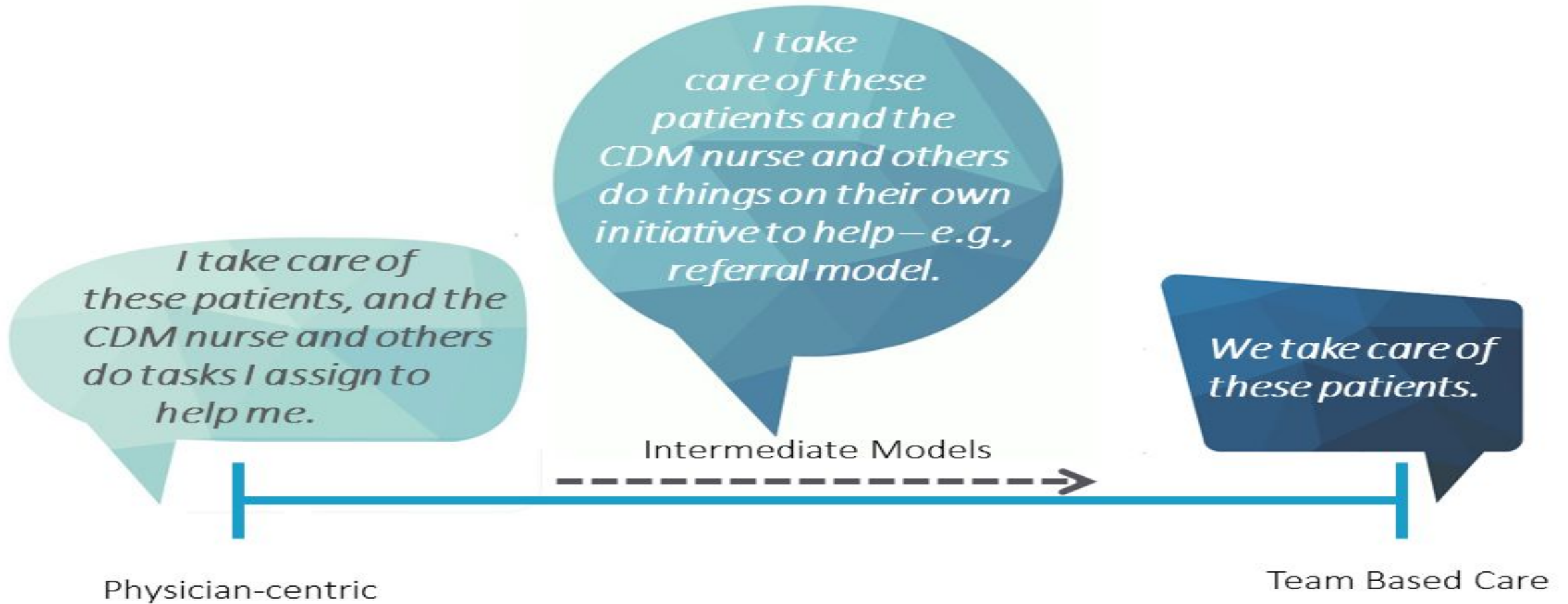
Patient Medical Neighborhood

A network of care involving health care providers and services surrounding the Patient Medical Home. PMHs coordinate and integrate services within the neighbourhood.

Each neighbourhood includes:

- A team of health care providers;
- hospitals;
- long-term care & community care;
- mental health & addictions;
- homecare structures and broader social and community supports

What Does Transformation Look Like?



Building Patient Medical Homes



Phased-rollout of Patient Medical Homes

- Clinician engagement (communications and team readiness)
- Initiation (team charter and securing resources for each team)
- EMR Establishment*
- Team Building (each team establishes its policies and processes; onboarding team members)*
- Go Live (team monitoring and evaluation of team and monitoring; panel management)

*Sequence may vary based on team readiness

Infrastructure & Patient Medical Homes

- Request for funding of additional infrastructure has been made to the capital budget to support the needs of patient medical homes.
- Medical Homes \$63.6 million over five years
- Current infrastructure outside existing health centres is designed around single providers while Patient Medical Homes are focused on teams which will require more space to work together.



Initial Teams

- Intention is to have Patient Medical Homes from tip to tip
 - Onboarding is based on team readiness and ability to coordinate with other strategic initiatives (e.g., EMR) and clinical demands
- 5 teams will be activated by end of March 2022
- Need to ensure active recruitment of new practitioners and set realistic expectation for sustainability of current providers

Staffing

- 5 family physicians have been hired in the last 6 months
 - 3 additional family physicians will be starting winter/spring 2022
 - 3 other pending offers
- 6 NPs have been hired in the last two months for Patient Medical Homes
- Posting and hiring additional PMH staff based on population health needs
- To date up to 50 FTEs have been approved with a budget envelope of 8.1M (annualized)

Strategic Considerations

- Achieving meaningful stakeholder engagement
- Managing complex change
- Resources and competing priorities
- Developing well-prepared and robust teams takes time

Questions & Comments