



# CITY OF CLEVELAND DIVISION OF POLICE

## Design Review - New Police Headquarters

November 9, 2021

# TEAM

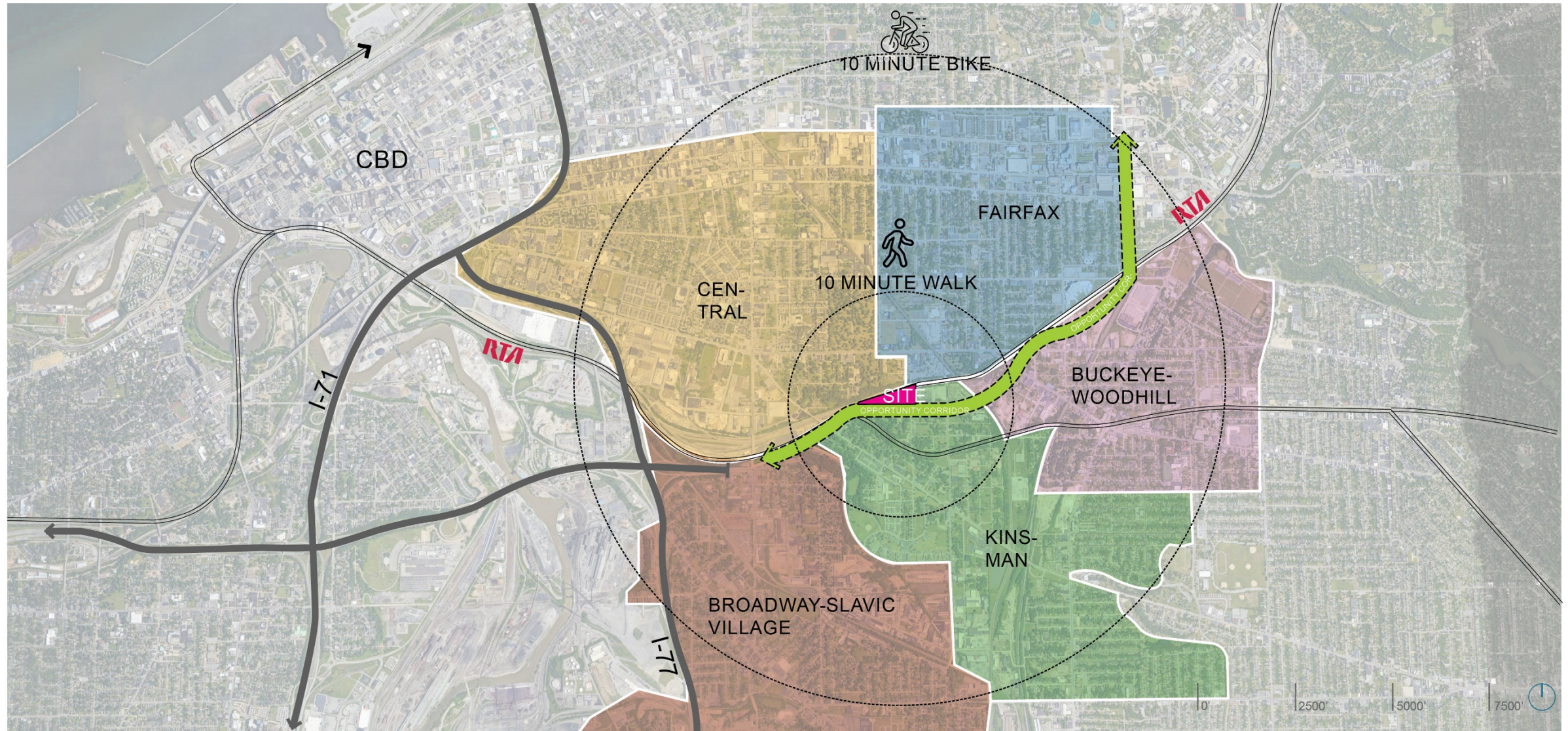
- **City of Cleveland**
- **Cleveland Division of Police**
  
- **Jonathan Tallman** – Dewberry-Ohio Designers PC
- **Jonathan Crump** – Dewberry-Ohio Designers PC
- **Michael Augoustidis** – JMT Architecture
- **Matt Manda** – MKSK Landscape
- **Cullen Meves** – MKSK Landscape
- **Nissa Beasley** – PCS Companies
- **Jack Gore** – PCS Companies

# PROJECT SUMMARY

- 4-story - 187,000 SF
- Scheduled for Occupancy June 2026
- Five Driving Themes of the project
  - **Transparency** – Security is a bridge to building trust
    - Transparency for Light
    - Transparency of the Cleveland Division of Police Department
  - **Civic Engagement** – Activity leads to Leadership
    - Sense of Place
    - Engagement of the Community the Facility will be located
    - Welcoming to everyone
  - **Professionalism** – Core strength enhances competent reach
    - Enhanced technology use
    - Reduce paper use and storage
    - Design for changing organizational unit sizes
  - **Resiliency** – fitness arises where options exist
    - Achieve exemplary energy and water savings
    - Use facility as an educational facility for community to learn about sustainability
  - **Wellness** – Stability of the individual promotes a thriving community
    - Design for the Environment
    - Design for stress reduction

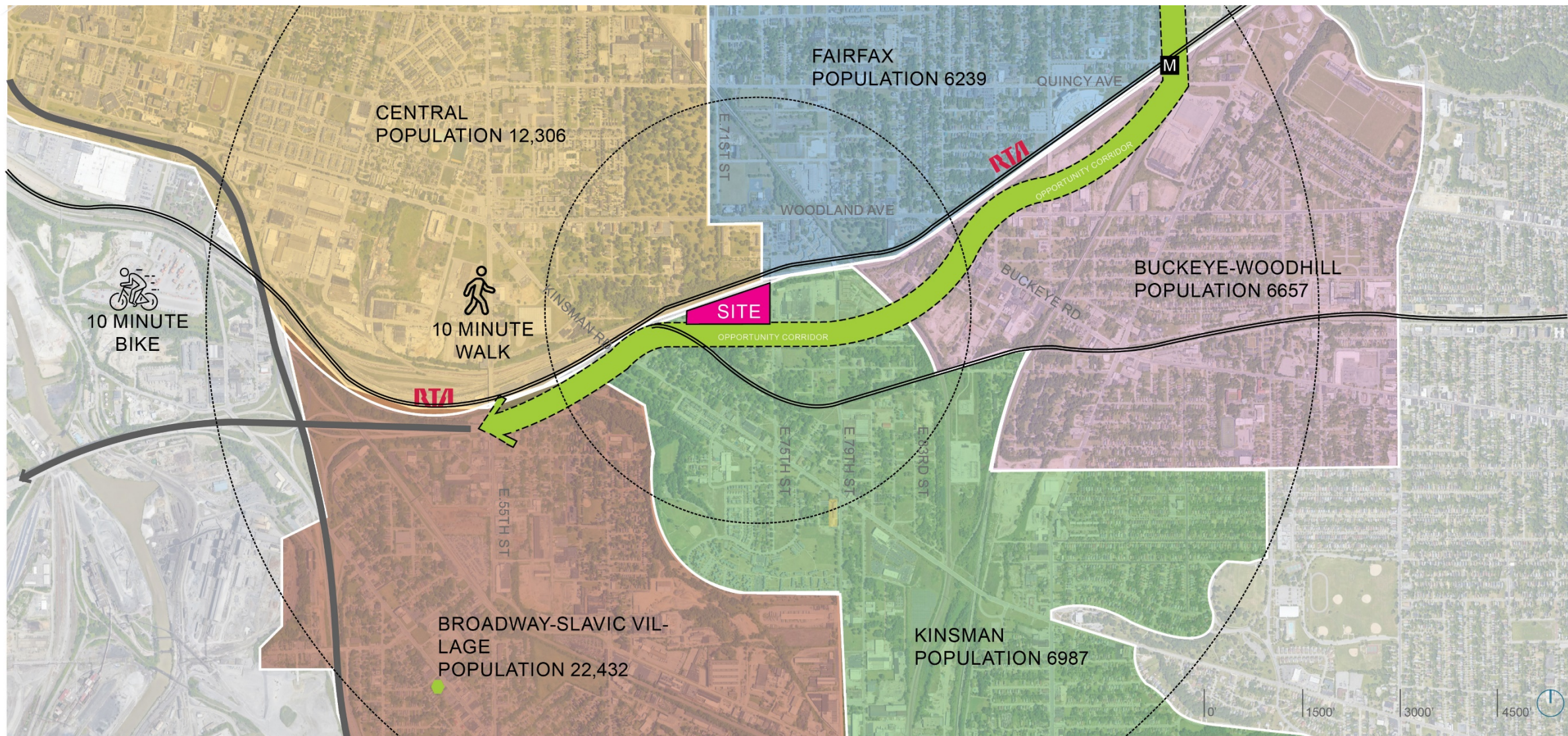
# City of Cleveland - Division of Police

## New Police Headquarters



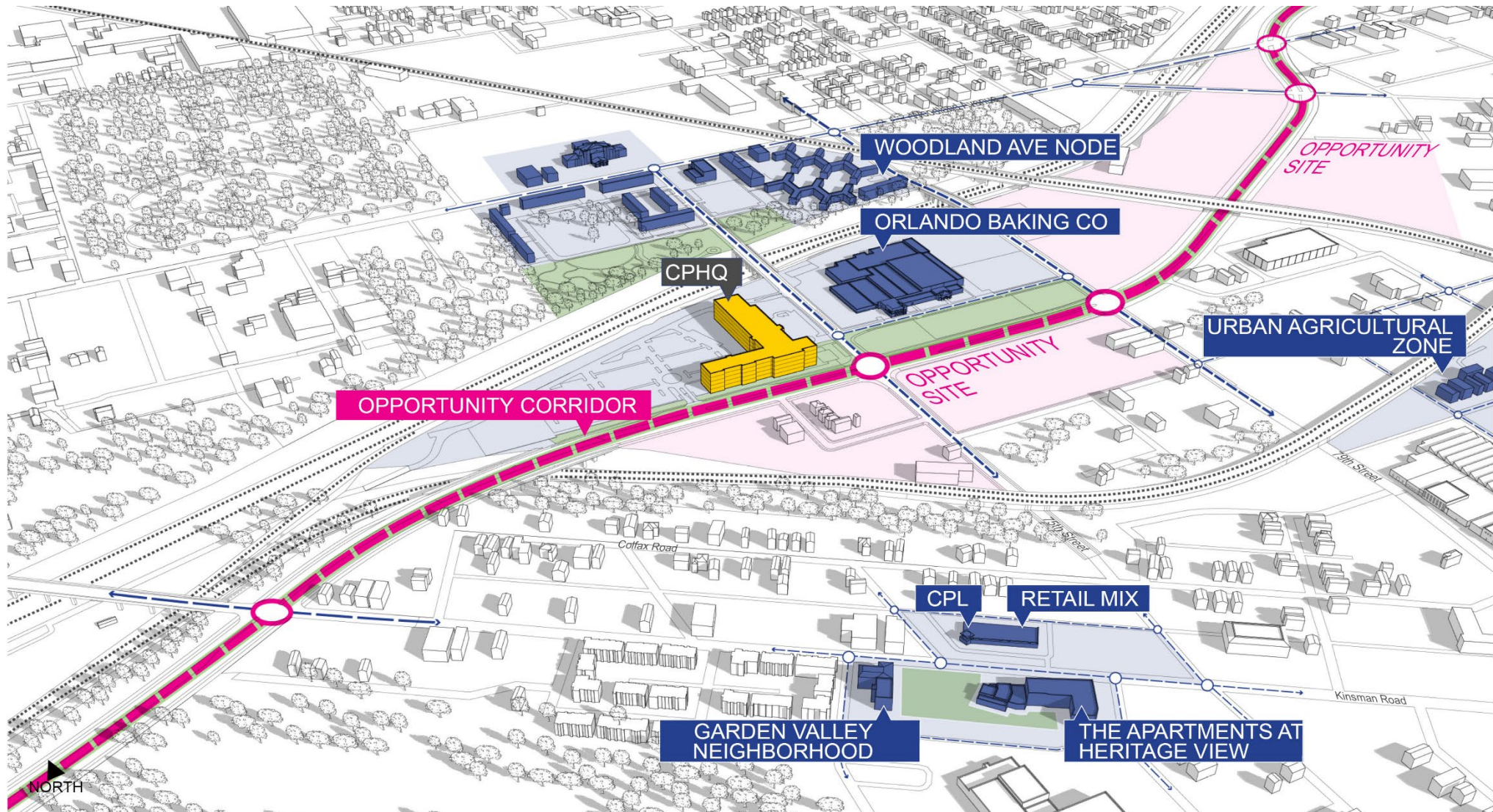
# City of Cleveland - Division of Police

## New Police Headquarters



# City of Cleveland - Division of Police

## New Police Headquarters



# City of Cleveland - Division of Police

## New Police Headquarters



# City of Cleveland - Division of Police

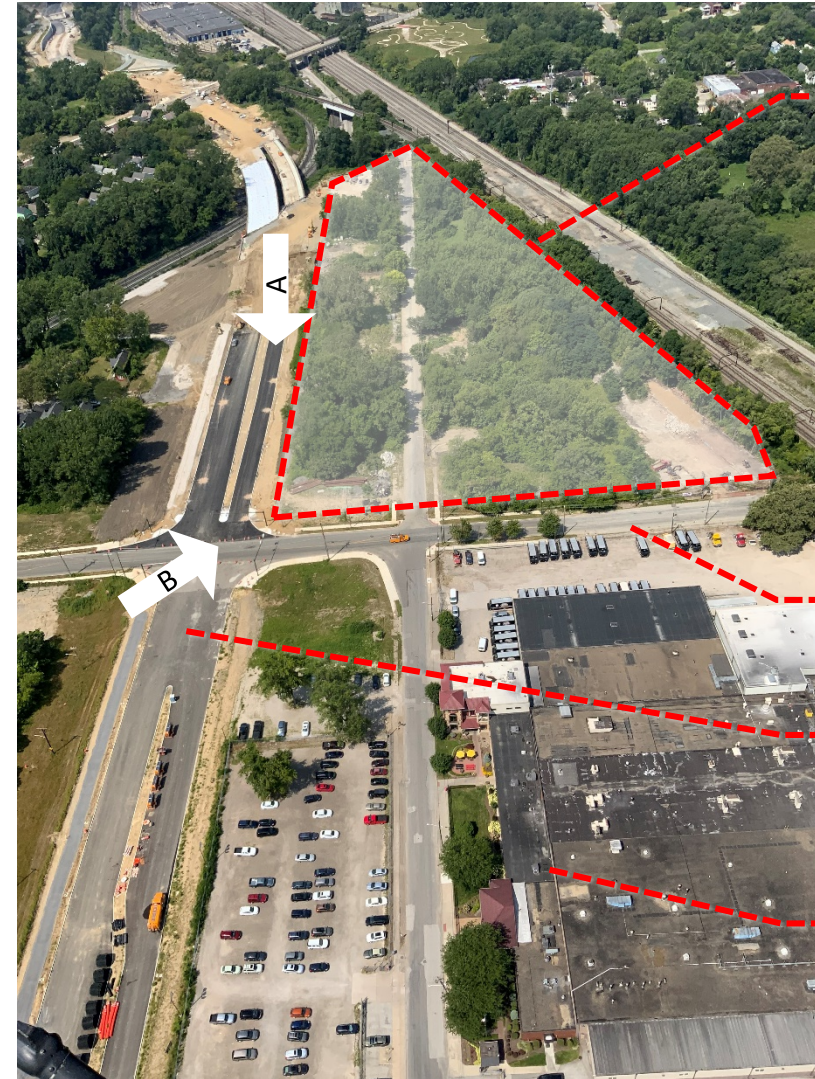
## New Police Headquarters



VIEW – A LOOKING EAST ON OPPORTUNITY CORRIDOR



VIEW – B LOOKING NORTHWEST AT INTERSECTION



EXISTING SITE  
GRAND AVENUE IN  
CENTER OF IMAGE



EAST 75<sup>TH</sup> STREET  
NEW BRIDGE OVER RAIL  
CORRIDOR PLANNED

OPPORTUNITY  
CORRIDOR  
OPENING SOON

ORLANDO BAKERY  
EXISTING INDUSTRY



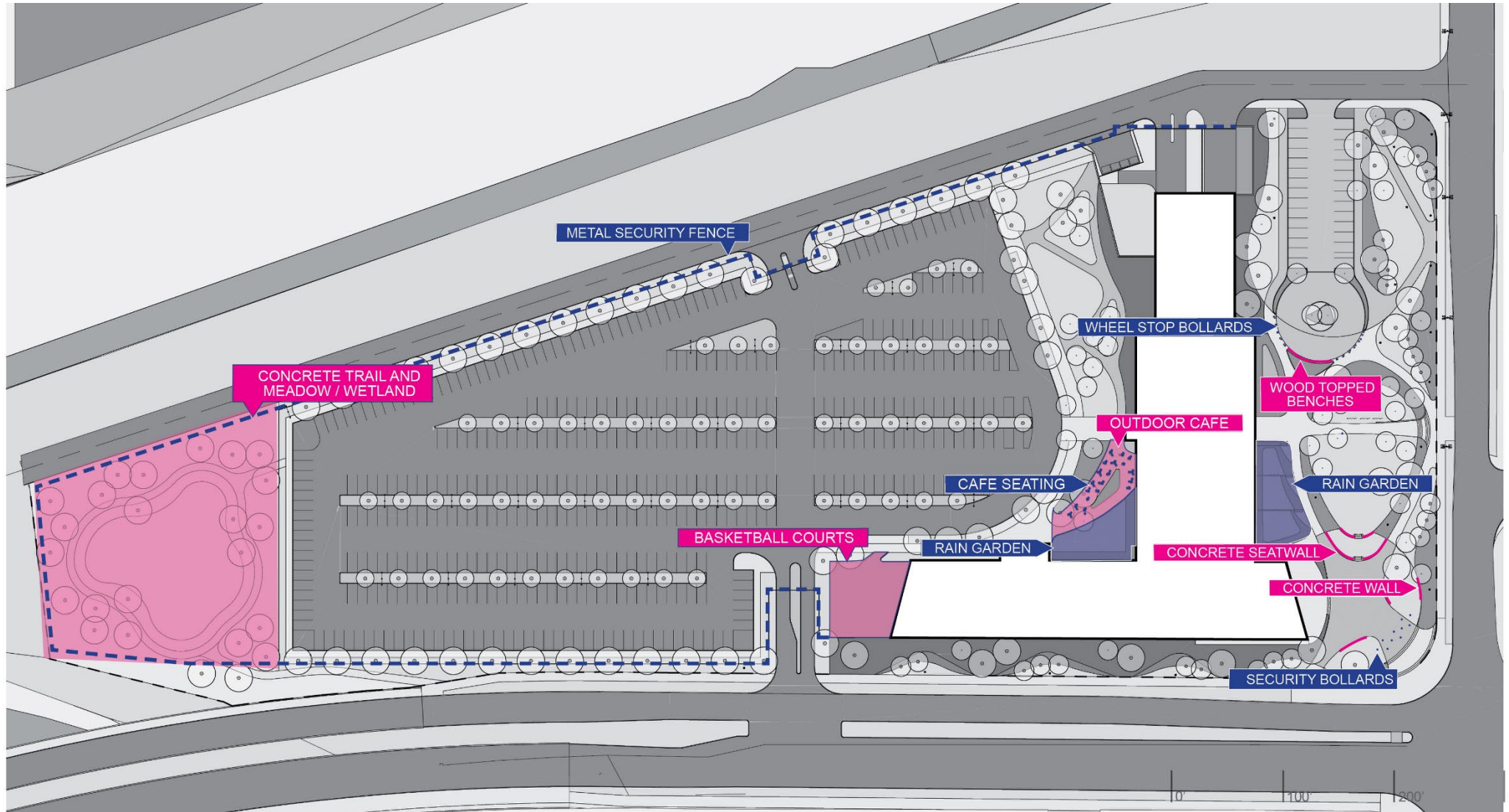
# City of Cleveland - Division of Police

## New Police Headquarters



# City of Cleveland - Division of Police

## New Police Headquarters



# City of Cleveland - Division of Police

## New Police Headquarters



### FURNITURE

**CAFE SEATING**  
LANDSCAPE FORMS - CHIPMAN  
36" DIAMETER TABLE  
AND ARMLESS CHAIR



**BENCHES**  
CURVED CONCRETE SEATWALLS



**BENCHES**  
CURVED CONCRETE  
WITH WOOD TOP



**BIKE RACKS**  
LANDSCAPE FORMS -  
BOLA BIKE RACK



### SECURITY MEASURES

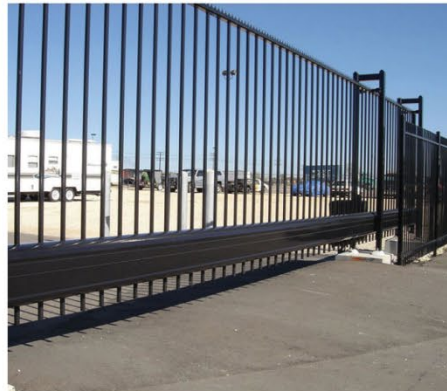
**SECURITY BOLLARDS**  
STAINLESS STEEL



**WHEEL STOP BOLLARDS**  
CUSTOM PRECAST CONCRETE



**METAL SECURITY GATE**  
WALLACE SLIDING GATES



**METAL SECURITY FENCE**  
COCHRANE CUSTOM FENCING



**TAPERED ARCHITECTURAL FINISH**  
CONCRETE WALL



# City of Cleveland - Division of Police

## New Police Headquarters



### AMENITIES - CHARACTER IMAGES

**RAIN GARDEN**  
MEADOW PLANTING, CONCRETE WEIRS  
AND DRY BED STONES AND BOULDERS



**PRIVATE OUTDOOR CAFE SPACE**  
MOVEABLE SEATING AND DECOMPOSED  
AGGREGATE



**CONCRETE TRAIL AND MEADOW/WETLAND**  
DETENTION POND AND PARK  
AVAILABLE TO OFFICERS



**OUTDOOR BASKETBALL COURTS**  
SYNTHETIC SURFACING



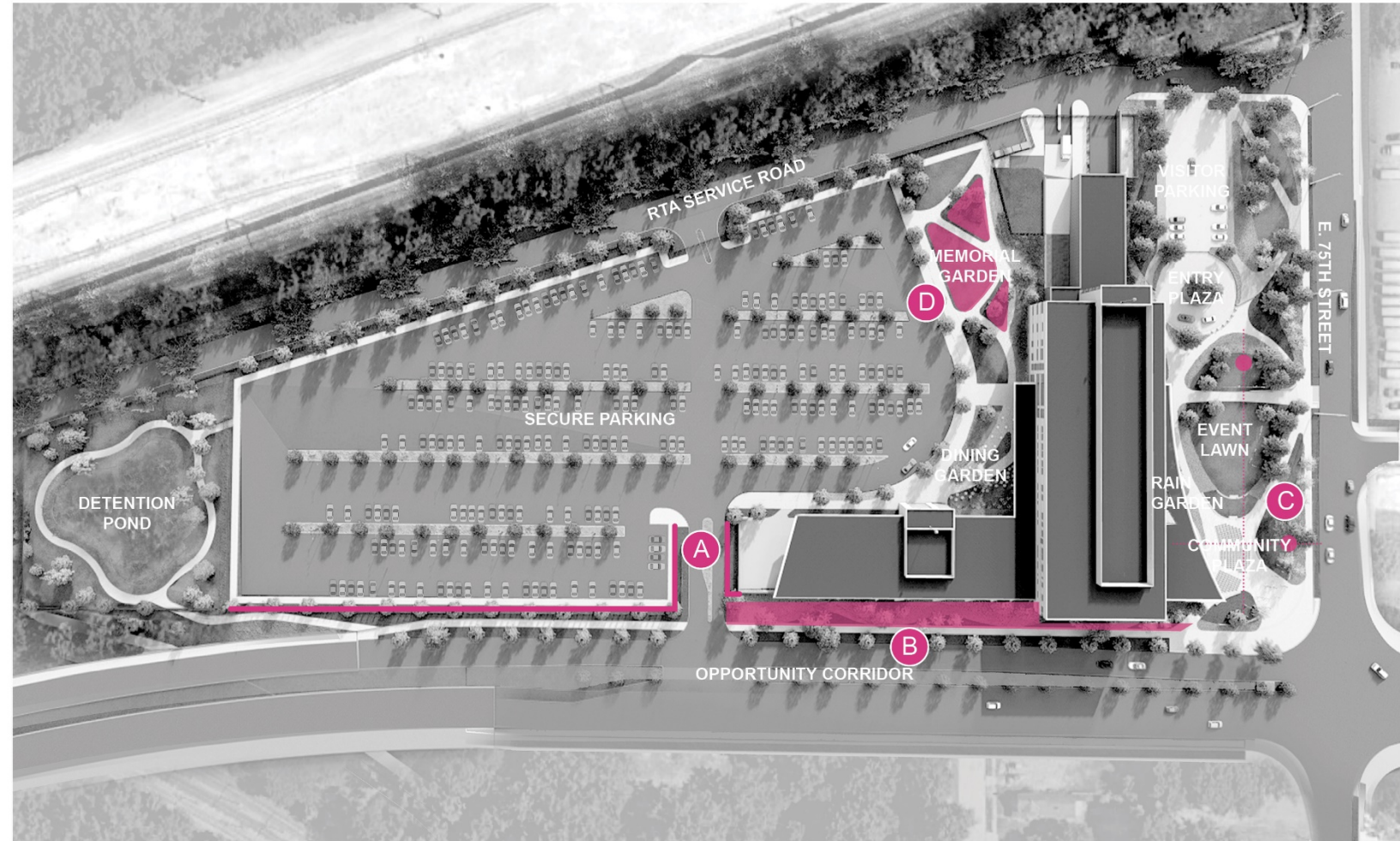
# City of Cleveland - Division of Police

## New Police Headquarters



### ART INSTALLATION LEGEND

- A** SECURITY FENCING AS ART
  - CURRENT PCS ALLOCATION- \$250,000 (APPROX. 1/3 OF PRICED AMOUNT FOR FENCING)
  - PROPOSED PORTION OF ART BUDGET- \$400,000
  - EXISTING FENCELINE TO BE VERIFIED (REFER 30 JUNE ESTIMATE, LINE ITEM 32000.D.F7)
  
- B** ART AS VEHICULAR CRASH PROTECTION- LANDSCAPE/HARDSCAPE ELEMENTS AS ART
  - CURRENT PCS ALLOCATION- \$0
  - PROPOSED PORTION OF ART BUDGET- \$250,000
  - PCS TO DETERMINE VALUE OF LANDSCAPE ITEMS
  
- C** DEDICATED AREAS FOR TRADITIONAL SCULPTURE ELEMENTS (TWO PROPOSED)
  - CURRENT PCS ALLOCATION- \$0
  - PROPOSED PORTION OF ART BUDGET- \$200,000 (\$100,000 EACH)
  - INTEGRATE INTO LANDSCAPE SCOPE
  
- D** REMEMBRANCE GARDEN
  - CURRENT PCS ALLOCATION- \$0
  - PROPOSED PORTION OF ART BUDGET- \$250,000
  - PCS TO VERIFY COST



# City of Cleveland - Division of Police

## New Police Headquarters



# City of Cleveland - Division of Police

## New Police Headquarters



**TRANSPARENCY –**  
POLICE / PUBLIC INTERACTION  
- main level



**PROFESSIONALISM –**  
HEADQUARTERS ADMINISTRATION  
- 1<sup>st</sup> – 4<sup>th</sup> levels



**CIVIC ENGAGEMENT**  
COMMUNITY FOCUSED PLAZA  
- main level lobby and community room



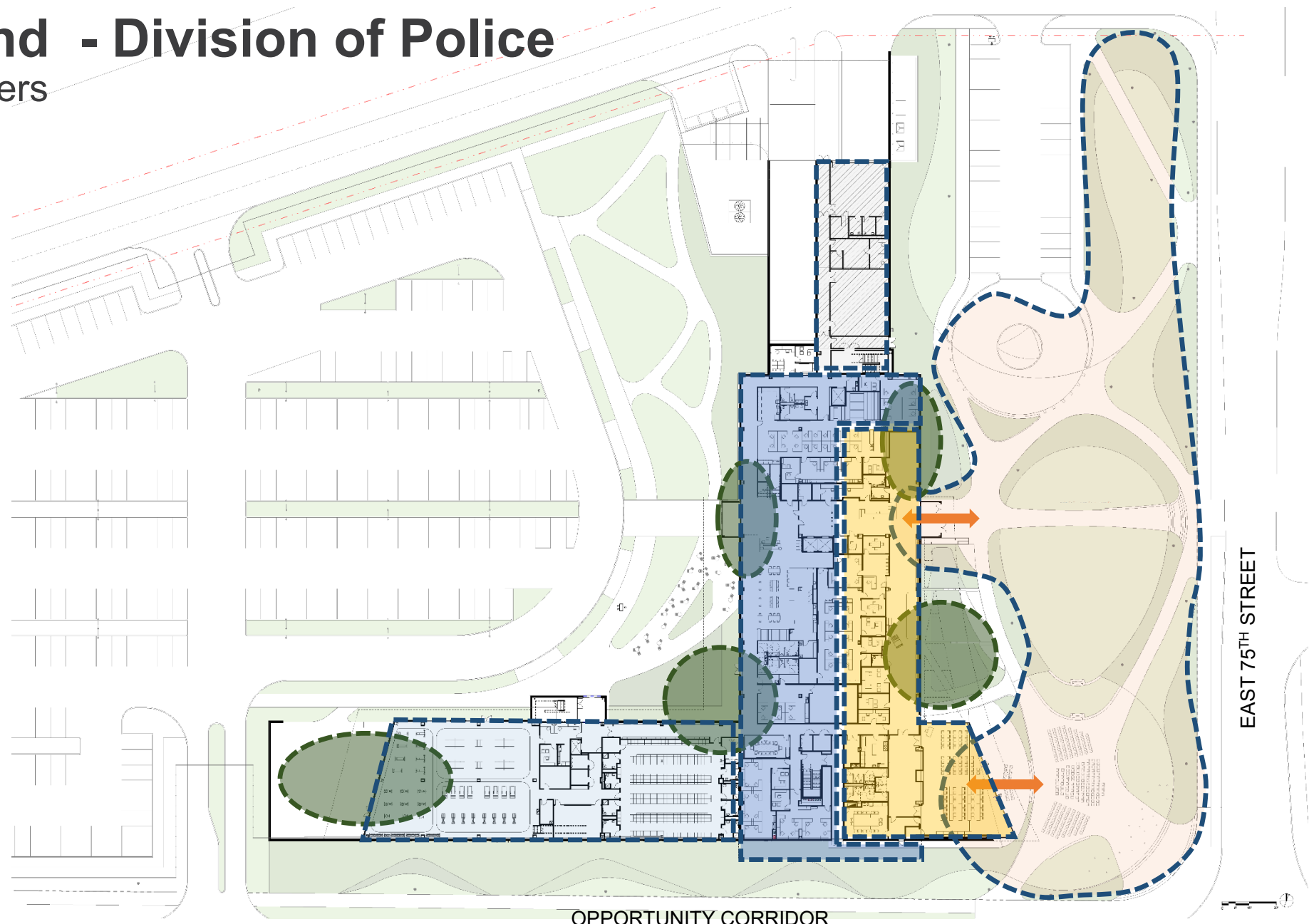
**WELLNESS**  
FITNESS AND TRAINING  
- 1<sup>ST</sup> and 2<sup>ND</sup> levels



**SUPPORT**  
LOADING DOCK / STORM SHELTER  
- 1<sup>ST</sup> level



**RESILIENCY**  
MINDFUL SPACES  
- all levels



OPPORTUNITY CORRIDOR

EAST 75<sup>TH</sup> STREET

# City of Cleveland - Division of Police

## New Police Headquarters





# City of Cleveland - Division of Police

## New Police Headquarters



# City of Cleveland - Division of Police

## New Police Headquarters



### SYMBOLIC SHIELD

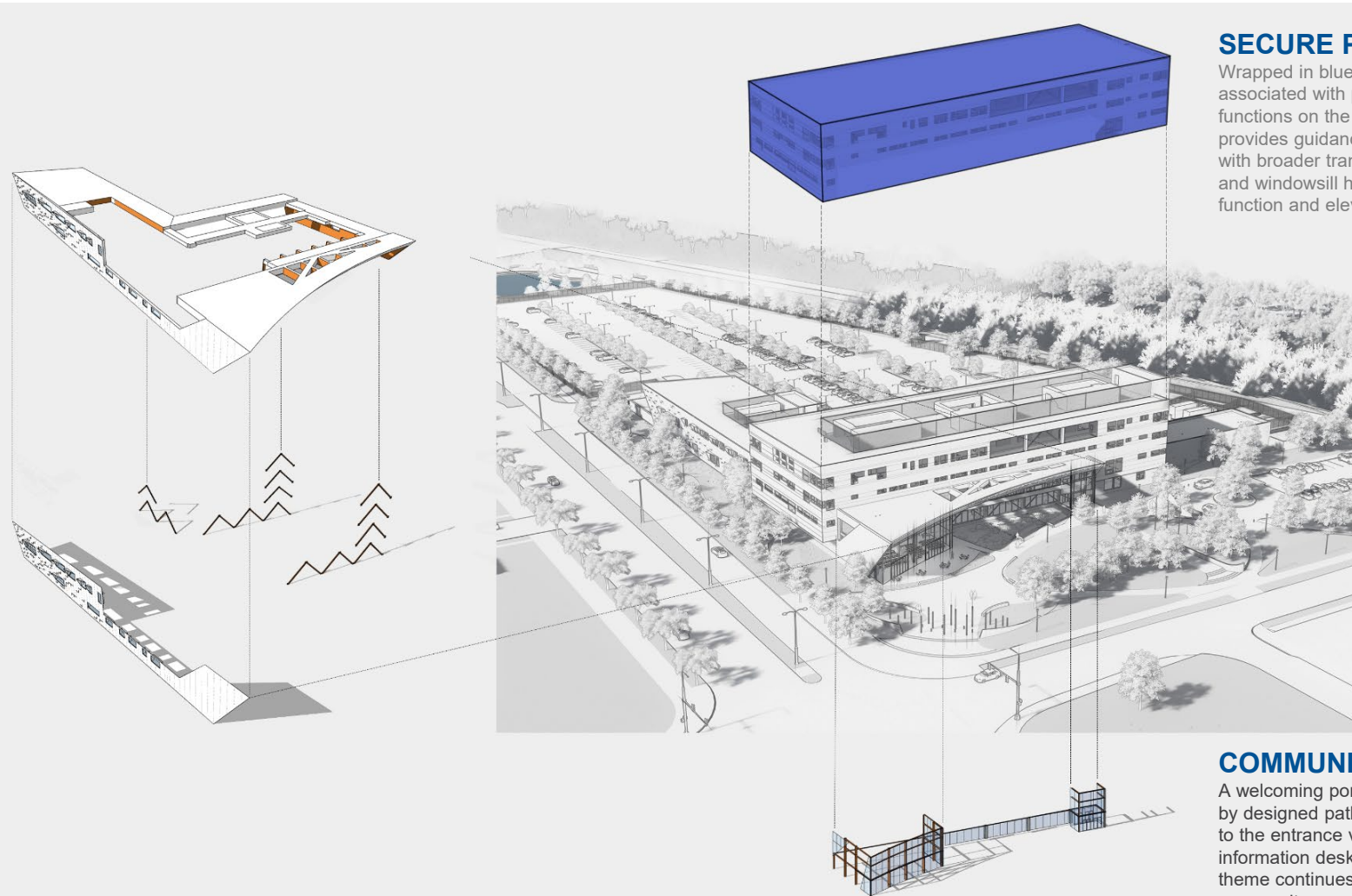
The roof form covering the porch wraps down the edges forming a protective shield around community and training spaces. Silver metal panels reinforce the concept while mission statement script within the edge references "guardian."

### BRIDGE ICONOGRAPHY

Discussions around the civic engagement theme spoke of building bridges between police and community with this building. A structural efficiency analysis noted the need for brace framing. A visit to the nearby Sidaway Bridge and viewing the massing of Cleveland above complex bridging structures created inspiration for the angular geometry.

### TRANSFORMATION

Opportunity corridor is transforming the Kinsman neighborhood. The southern face of building will reflect that transformation. The pattern of the facade begins with an underlying rhythm recalling the forgotten triangle. Dimension is given to the triangular form as shadow cast panels and fixed sun control. Shadows transform the image during the day while lighting and reflections continue the transformation experience during evening hours.



### SECURE POLICE WORKSPACE

Wrapped in blue metal panels, the color most associated with police defines administrative functions on the upper three levels. Function within provides guidance for window opening locations with broader transparency for conference rooms and windowsill heights that are responsive to function and elevation above grade.

### COMMUNITY PORCH

A welcoming porch says "come n in." Reinforced by designed pathways, a visitor is naturally guided to the entrance vestibule to be greeted at the information desk with a smile. The transparency theme continues as a visitor moves into the community room. Large folding glass door openings allow the community to flow in and out of the porch with ease during special events.

# City of Cleveland - Division of Police

## New Police Headquarters



# City of Cleveland - Division of Police

## New Police Headquarters



# City of Cleveland - Division of Police

## New Police Headquarters



# City of Cleveland - Division of Police

## New Police Headquarters



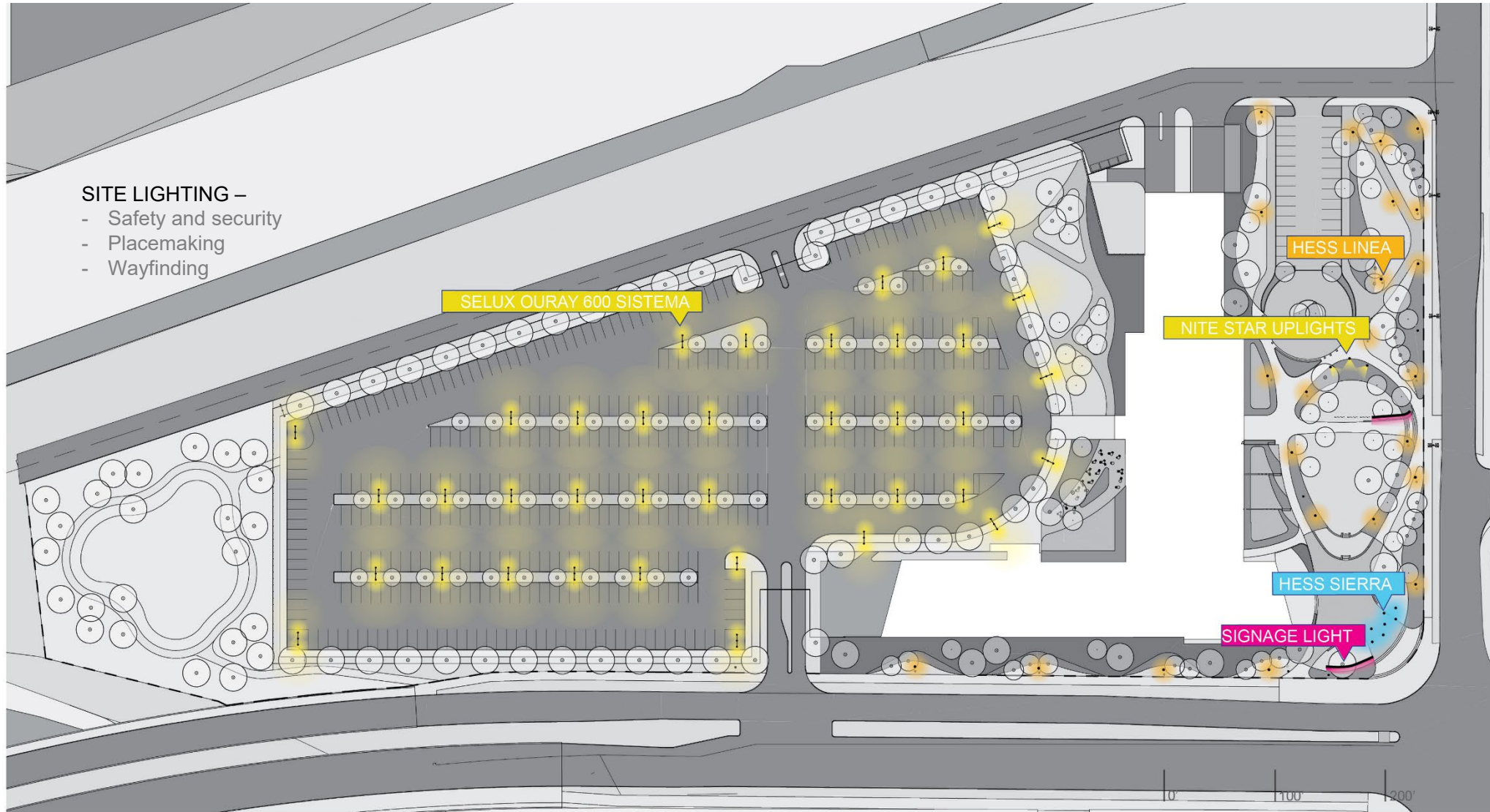
# City of Cleveland - Division of Police

## New Police Headquarters



# City of Cleveland - Division of Police

## New Police Headquarters

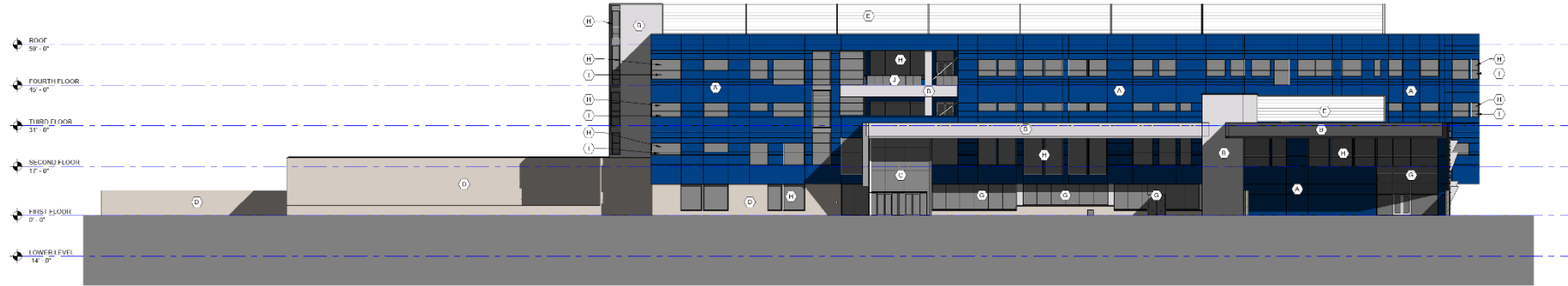


- SITE LIGHTING –**
- Safety and security
  - Placemaking
  - Wayfinding



# City of Cleveland - Division of Police

## New Police Headquarters



1 WEST ELEVATION  
Scale: 1/16" = 1'-0"

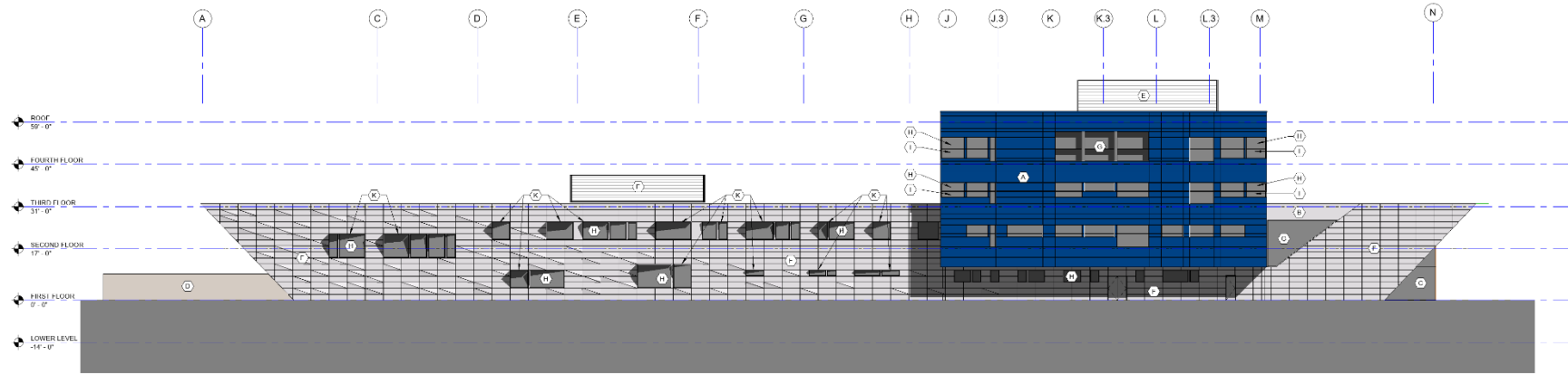
EXTERIOR BUILDING ELEVATIONS KEYNOTE LEGEND	
A	ALUMINUM INSULATED COMPOSITE PANELS, DARK SLUE, 5/8" BUBBLER
B	ALUMINUM COMPOSITE METAL, BRN/C, METALLIC SILVER
C	GLAZED ALUMINUM AND TITANIUM CURTAIN WALL SYSTEM
D	OUTSIDE BRICK VENEER, REDDISH BRICK, CARBONSTONE (DELTA)
E	PERFORATED METAL, YAMAL, MECHANICAL, BRUSH W/SL
F	DIMENSIONAL ALUMINUM COMPOSITE METAL PANELS, METALLIC SILVER
G	PERFORATED ALUMINUM ANODIZED ALUMINUM CURTAIN WALL SYSTEM
H	PERFORATED BRICK VENEER, BRUSHED ALUMINUM STONEPOINT WINDOW SYSTEM W/ 1/2" (1000) 48" X 96" PANELS
I	BULLET RESISTANT GLAZING @ BOTTOM PANELS (17'0")
J	EXTERIOR GLASS SHADING SYSTEM
K	ALUMINUM COMPOSITE PANEL, BRN BRN @ TOP AND ONE SIDE OF WINDOW TYPE



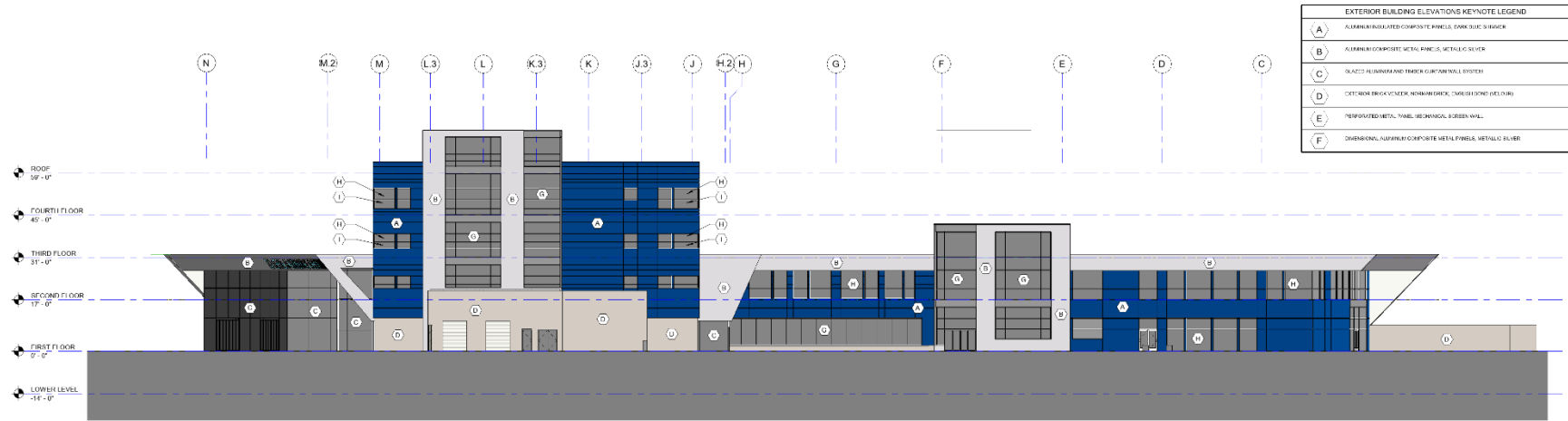
2 EAST ELEVATION  
Scale: 1/16" = 1'-0"

# City of Cleveland - Division of Police

## New Police Headquarters



1 SOUTH ELEVATION  
Scale: 1/16" = 1'-0"

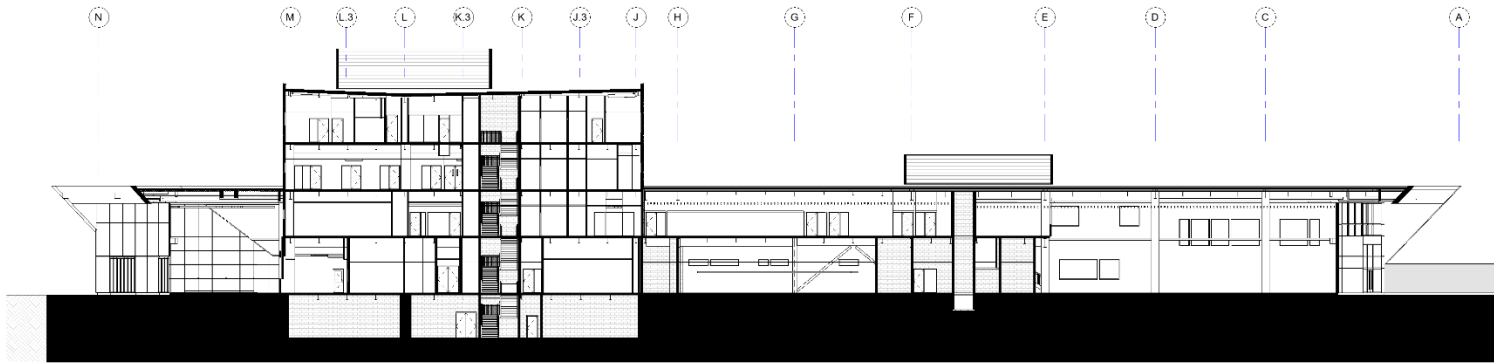


2 NORTH ELEVATION  
Scale: 1/16" = 1'-0"

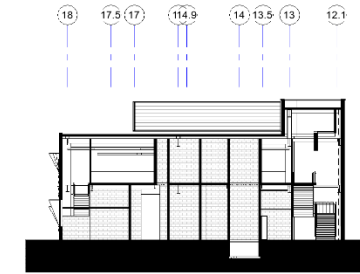
EXTERIOR BUILDING ELEVATIONS KEYNOTE LEGEND	
A	ALUMINUM INSULATED COMPOSITE PANELS, DARK SLATE WINDOW
B	ALUMINUM COMPOSITE METAL, BRASS, METALLIC SILVER
C	GLAZED ALUMINUM AND TITANIUM CURTAIN WALL SYSTEM
D	EXTERIOR BRICK VENEER, REDDISH BRICK, CARBONSTONE (DELTA)
E	PERFORATED METAL, YAMAL MECHANICAL SCREEN WALL
F	DIMENSIONAL ALUMINUM COMPOSITE METAL PANELS, METALLIC SILVER
G	PERFORATED ALUMINUM ANODIZED ALUMINUM CURTAIN WALL SYSTEM
H	PERFORATED METALLIC BRASS ALUMINUM STONEFRONT WINDOW SYSTEM WITH 1/2" (6.35) GLASS
I	BULLET RESISTANT GLAZING @ BOTTOM PANELS (TYP.)
J	EXTERIOR GLASS SHARDARE SYSTEM
K	ALUMINUM COMPOSITE PANEL, DARK SLATE @ TOP AND ONE SIDE OF WINDOW TYPE

# City of Cleveland - Division of Police

## New Police Headquarters



1 BUILDING SECTION A-A  
Scale: 1/16" = 1'-0"



4 BUILDING SECTION D-D  
Scale: 1/16" = 1'-0"



2 BUILDING SECTION B-B  
Scale: 1/16" = 1'-0"



5 BUILDING SECTION E-E  
Scale: 1/16" = 1'-0"

# City of Cleveland - Division of Police

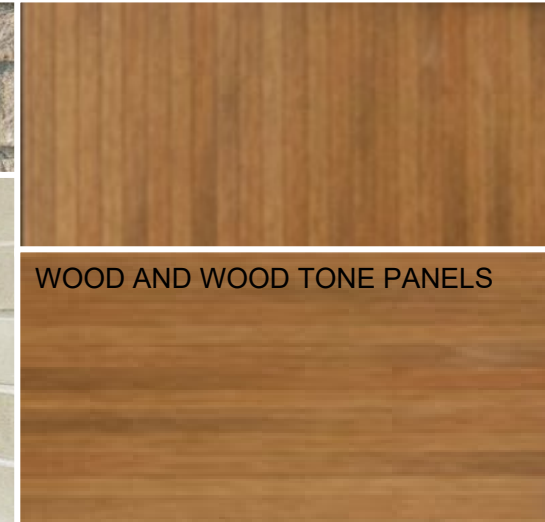
## New Police Headquarters



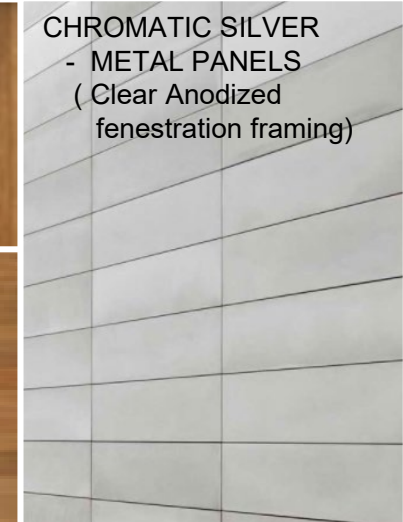
MIDNIGHT BLUE - METAL PANELS  
(color matched fenestration framing)



BEREA LIMESTONE TONE  
- BRICKS



WOOD AND WOOD TONE PANELS



CHROMATIC SILVER  
- METAL PANELS  
( Clear Anodized  
fenestration framing)

# City of Cleveland - Division of Police

## New Police Headquarters



BRANDING (BLUE)  
NO SIGNAGE ON PRIMARY  
BUILDING MASSING

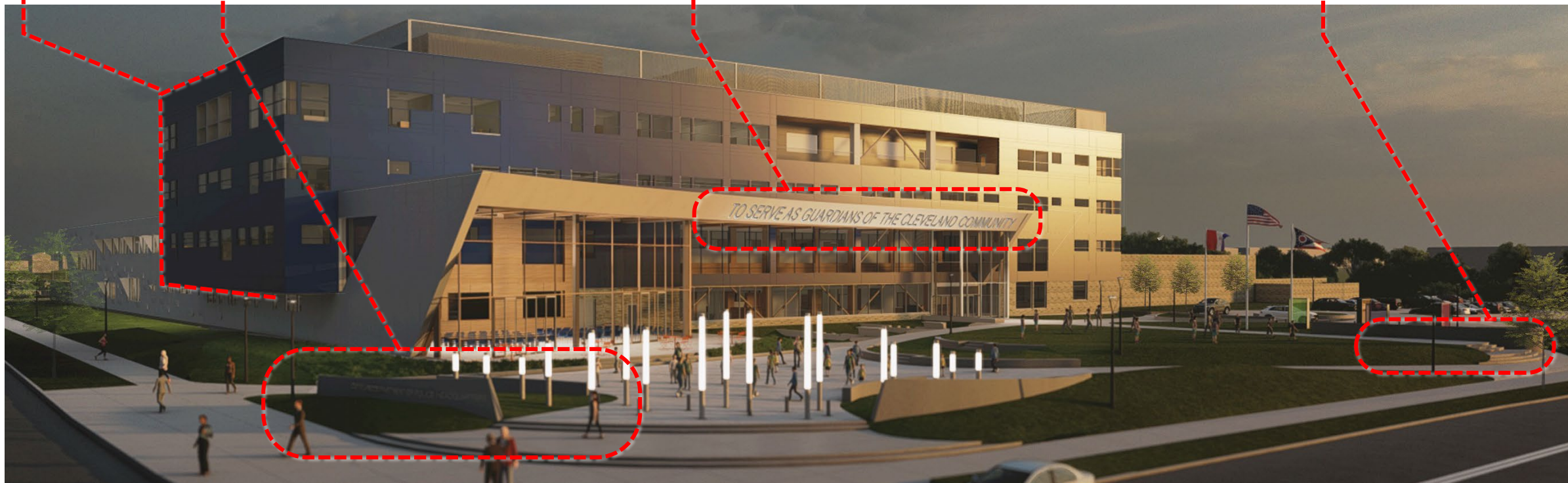
WAYFINDING



BRANDING  
MISSION STATEMENT OR  
OTHER TEXT IN LIEU OF  
BUILDING LABELING



WAYFINDING

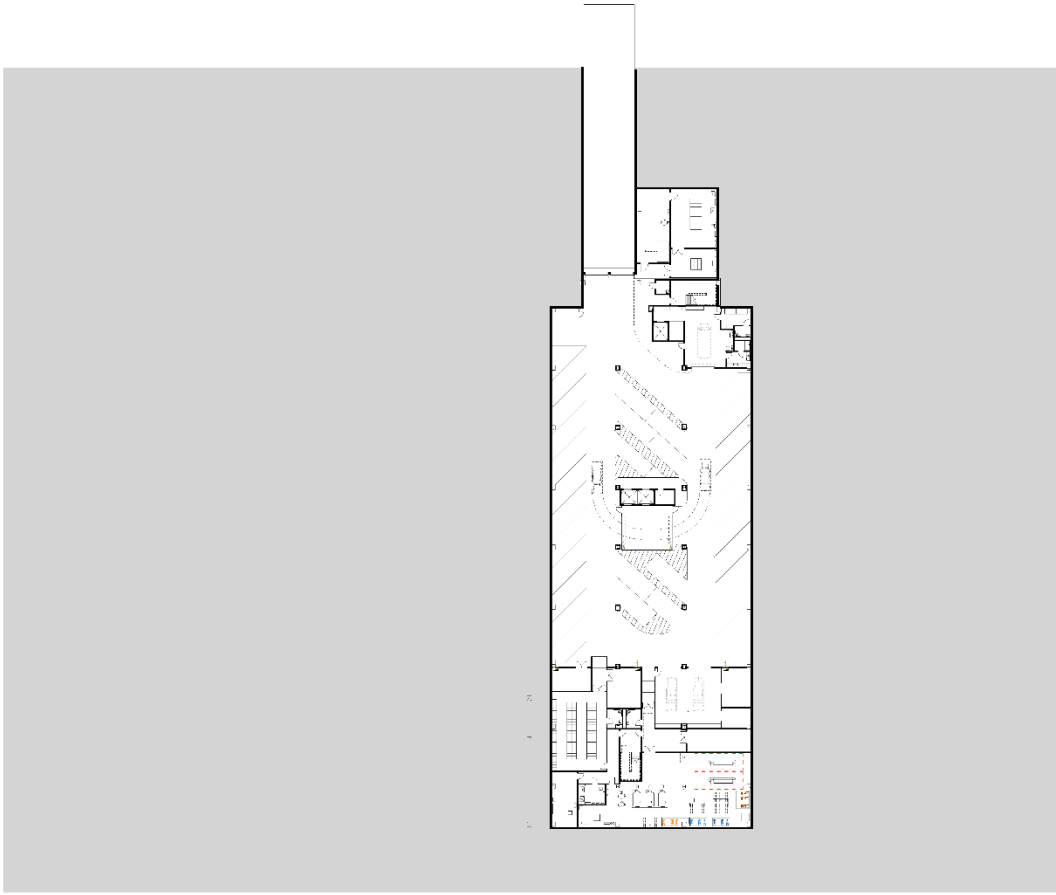






# City of Cleveland - Division of Police

## New Police Headquarters



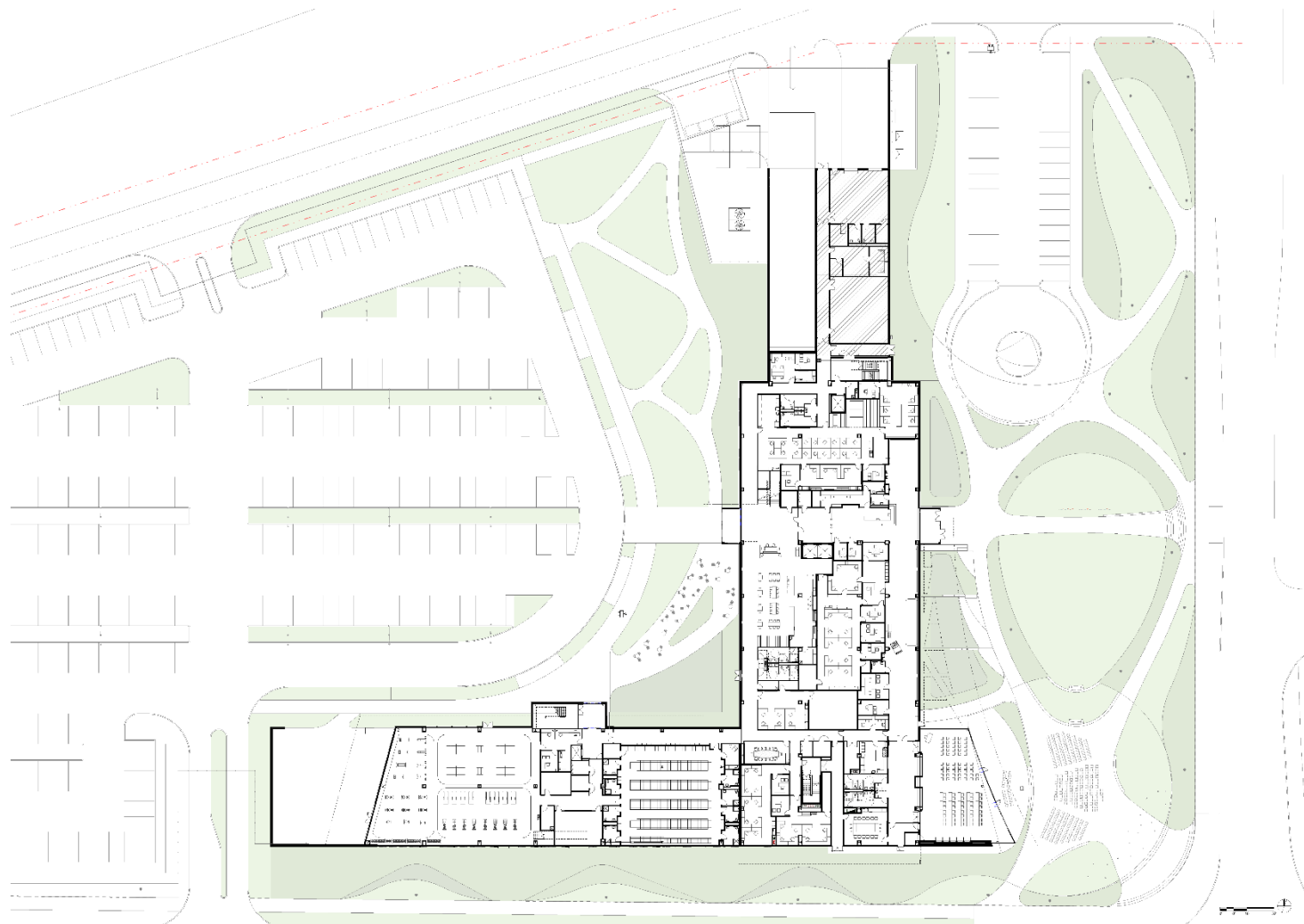
CLEVELAND DIVISION OF POLICE HEADQUARTERS  
LOWER LEVEL OVERALL PRESENTATION PLAN





# City of Cleveland - Division of Police

## New Police Headquarters

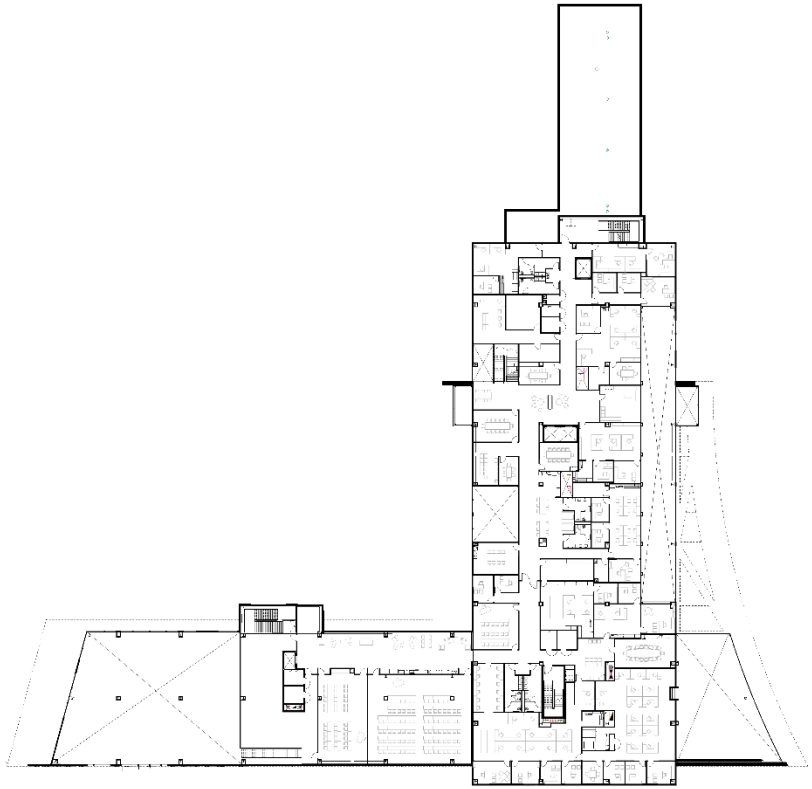


CLEVELAND DIVISION OF POLICE HEADQUARTERS  
FIRST LEVEL OVERALL PRESENTATION PLAN

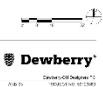


# City of Cleveland - Division of Police

## New Police Headquarters

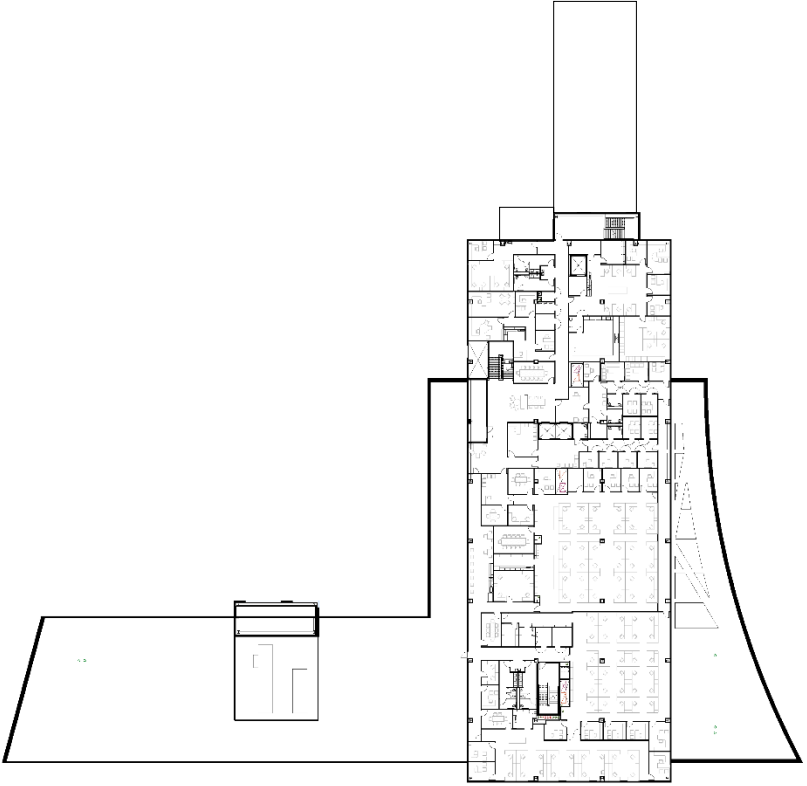


CLEVELAND DIVISION OF POLICE HEADQUARTERS  
SECOND LEVEL OVERALL PRESENTATION PLAN

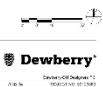


# City of Cleveland - Division of Police

## New Police Headquarters

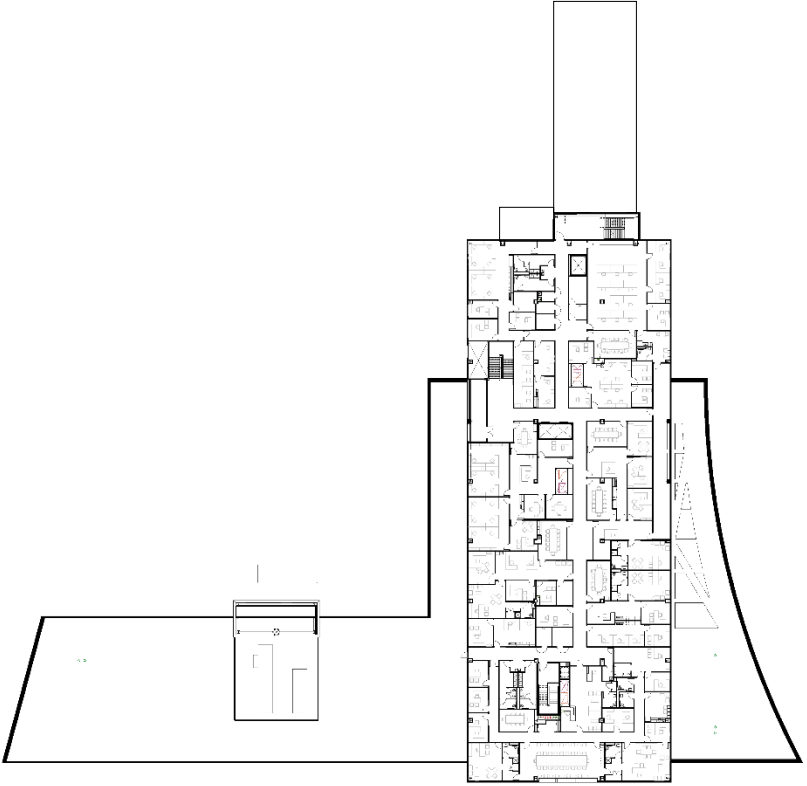


CLEVELAND DIVISION OF POLICE HEADQUARTERS  
THIRD LEVEL OVERALL PRESENTATION PLAN

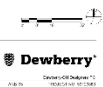


# City of Cleveland - Division of Police

## New Police Headquarters



CLEVELAND DIVISION OF POLICE HEADQUARTERS  
FOURTH LEVEL OVERALL PRESENTATION PLAN



# City of Cleveland - Division of Police

## New Police Headquarters



### BADGE CEREMONY



# City of Cleveland - Division of Police

## New Police Headquarters



# City of Cleveland - Division of Police

## New Police Headquarters



### FARMERS' MARKET



# City of Cleveland - Division of Police

New Police Headquarters

