



THE
**STRATEGIC
COUNSEL** 25

TORONTO | OTTAWA | CALGARY

www.thestrategiccounsel.com

EXPERIENCE • PASSION • CREATIVITY
CUSTOM SOLUTIONS FOR COMPLEX ISSUES



PULSE REPORT ON COVID-19 – REPORT #63

CABINET OFFICE
January 8th 2021



KEY FINDINGS

Key Findings

1 The government's 'right track' scores have stabilized at 66% after dropping 10-points following the province-wide shutdown announcement.

'Right track' scores are softer among women, incomes <\$40k, and among those born outside Canada.

4 In addition, perceptions of the government's performance on economic metrics continue to remain well lower the scores registered last Summer.

On Education, scores on 'managing the re-opening of schools' have declined in light of the in-person classes being shifted to online.

Perceptions toward the government's performance on 'ensuring excellent public education' remains stable.

2 The 'COVID-19' priority has reached its highest point: 66% (much higher than the early days of the pandemic).

The 'economy' remains as a secondary priority at 9%, but it trails 'COVID-19' significantly, while 'Education' has largely disappeared as a priority.

5 Importantly, most Ontarians overwhelmingly believe that the provincial shutdown was an 'appropriate reaction'. Very few felt it was an overreaction.

They see the shutdown as having a positive impact on infection rates and hospitalizations.

Similarly, Ontarians also believe that if infections continue to rise, the shutdown should be extended.

3 The government's performance on key health metrics -- 'keeping people safe during the COVID-19 situation', 'delivering quality health care to Ontarians' and 'managing long-term care' -- have declined over the past 10 days. These declines likely stem from the rising infection cases.

The initial performance score on managing vaccinations is soft at +2.

6 In recent waves, a substantial gap has opened up on trust. On the one hand, Ontarians' trust in the government's communications about COVID-19 is high and rising while, on the other hand, trust in 'managing the provincial economy' and that COVID-19 restrictions will be measured and appropriate have declined.

Key Findings

7 Compared to last Spring, Ontarians are much more likely to believe that the government has not moved quickly enough to stop the spread of COVID-19.

8 Compared to the Spring, Ontarians are slightly less likely to believe the idea that staying home means saving lives. And, in the latest wave, Ontarians are much more likely to believe that the lack of a social life is extremely difficult.

Despite this increasing fatigue in staying home, most Ontarians continue (similar to last May) to reject idea that they would rather take a chance on getting COVID-19 than continue at home.

Still, three-quarters say that they are only leaving their homes to go to the grocery store and the pharmacy.

9 Most Ontarians express concern about the new UK strain of COVID-19 being detected in Ontario.

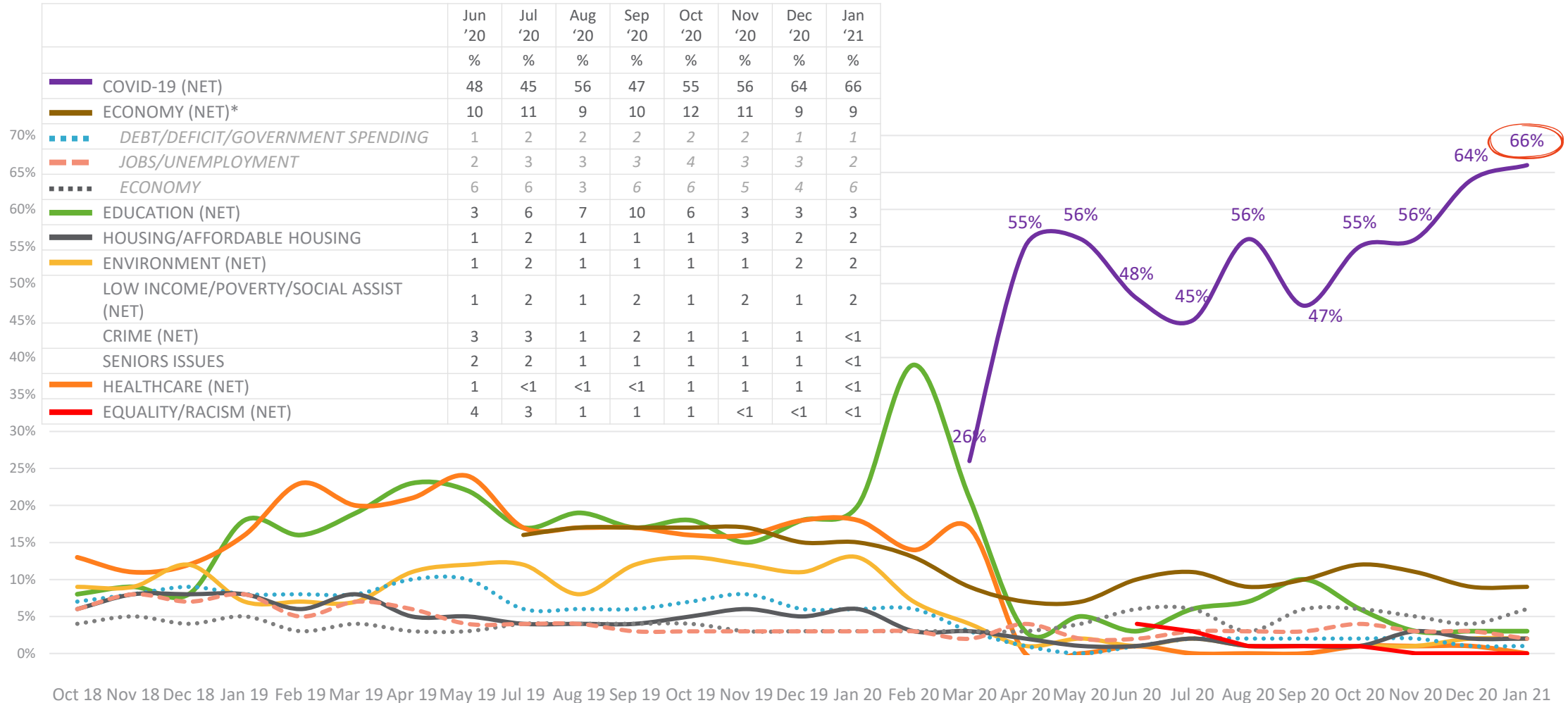
Ontarians overwhelmingly support strong initiatives to prevent the international spread, particularly from the UK, of COVID-19.

TOP ONTARIO GOVERNMENT PRIORITIES



ONTARIANS' TOP PRIORITIES REQUIRING ATTENTION FROM THE GOVERNMENT

The 'COVID-19' priority has reached its highest point: 66% (much higher than the early days of the pandemic). The 'economy' remains as a secondary priority at 9%, but it trails 'COVID-19' significantly, while 'Education' has largely disappeared as a priority.



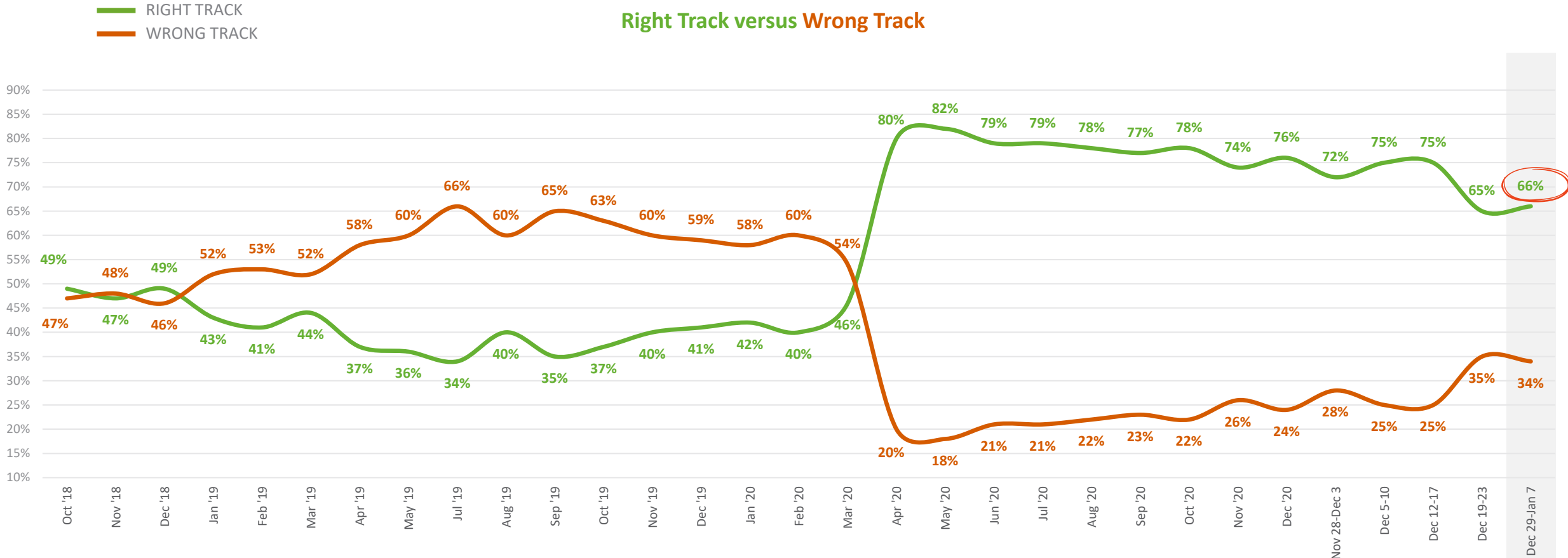
*ECONOMIC (NET) includes: Debt/Deficit/Government spending/Balance budget, Jobs/unemployment, Economy, Taxes

Q1. Thinking about the issues presently facing Ontario, which ONE do you feel should receive the GREATEST attention from the Ontario provincial government? That is, what should be the top priority?

RIGHT TRACK
WRONG TRACK



The government’s ‘right track’ scores have stabilized at 66% after dropping 10-points following the province-wide shutdown announcement.



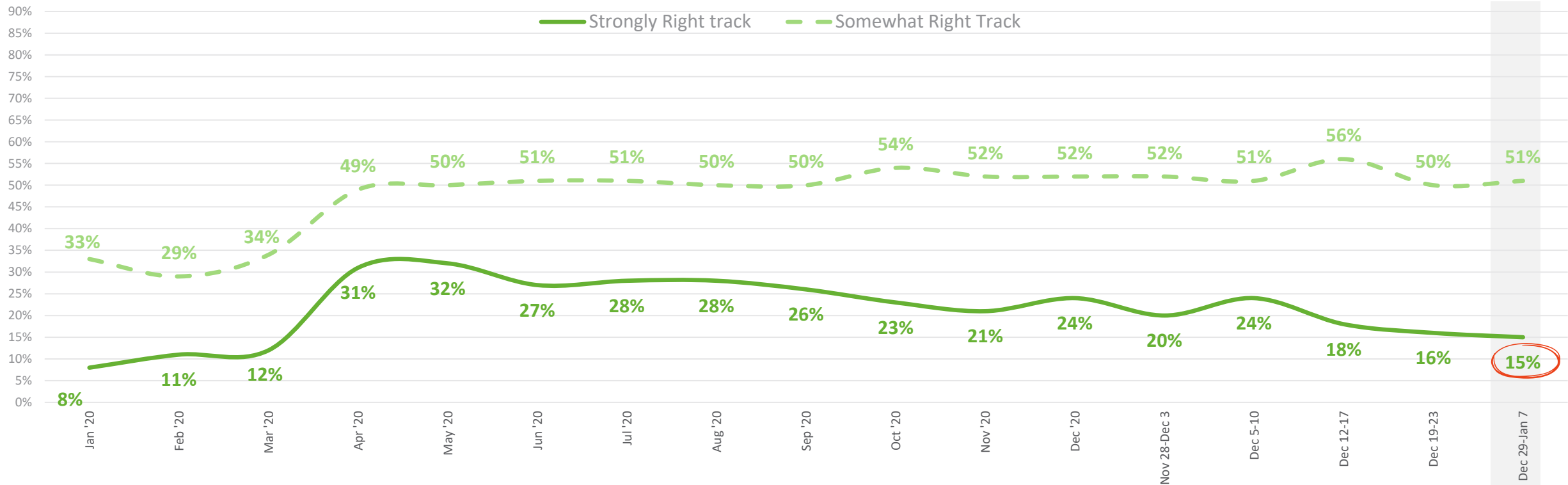
These graphs are based on 4 day roll in order to boost the sample sizes.

Q2. Overall, do you feel that the Ontario provincial government is on the right track or the wrong track, in terms of how it is governing the province?

Base: Total sample

The government’s ‘strongly right track’ scored have stabilized at 15% after dropping 9-points since mid-December.

‘Strongly’ Right Track versus ‘Somewhat’ Right Track



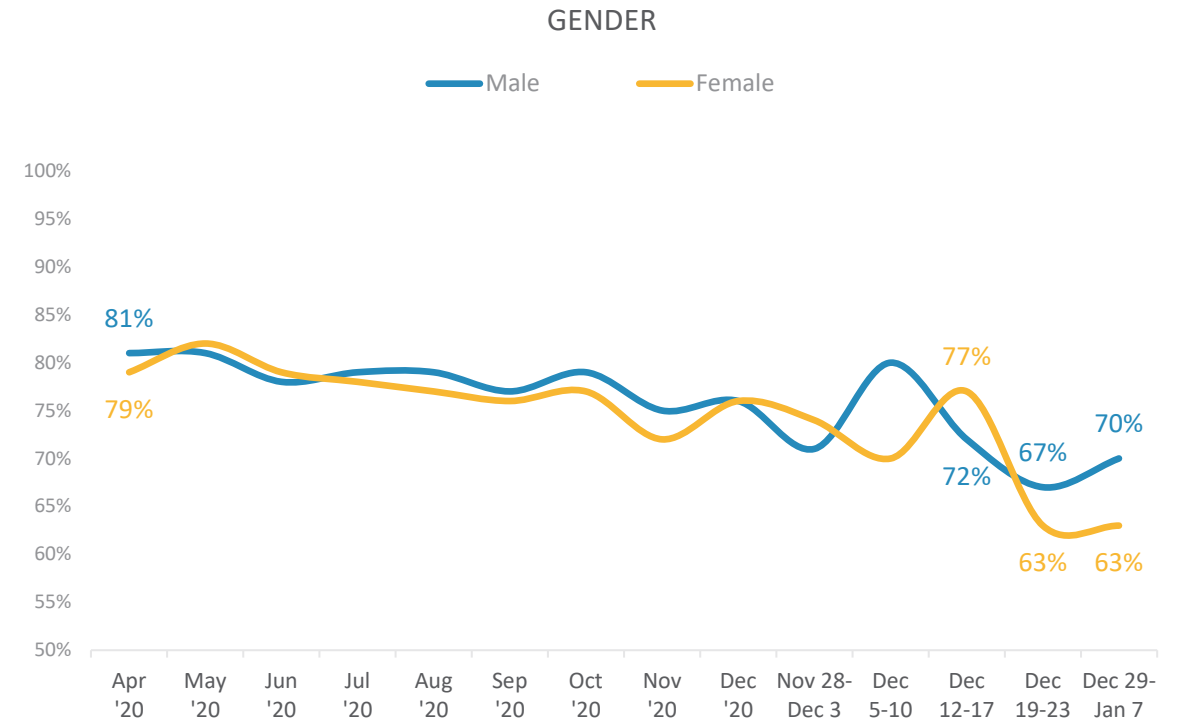
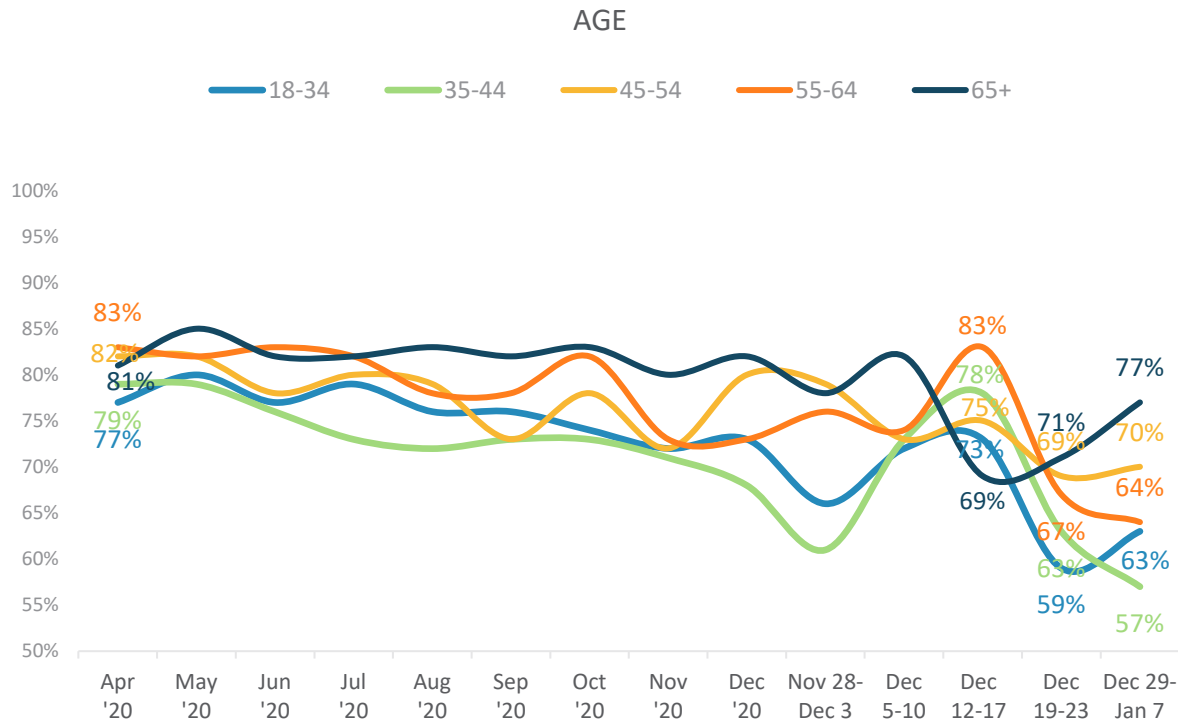
These graphs are based on 4 day roll in order to boost the sample sizes.

Q2. Overall, do you feel that the Ontario provincial government is on the right track or the wrong track, in terms of how it is governing the province?

Base: Total sample

The 'right track' scores are lower among women in the latest waves compared to men.

Right Track Scores – 6-Day Roll



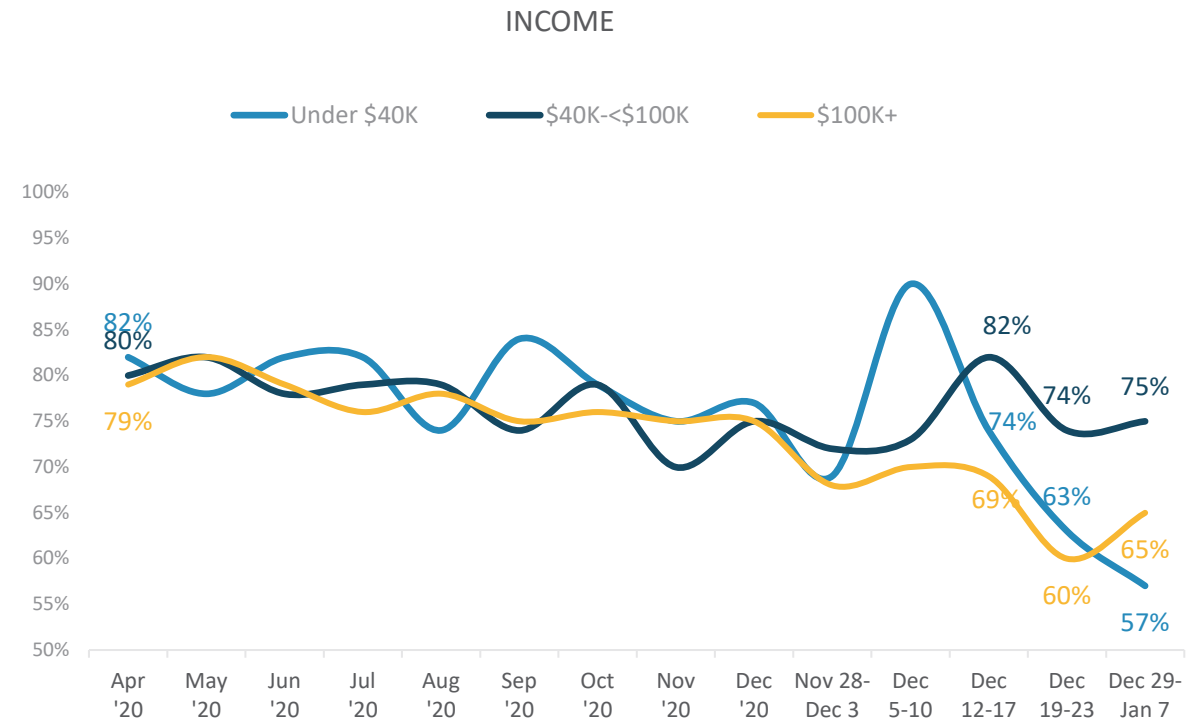
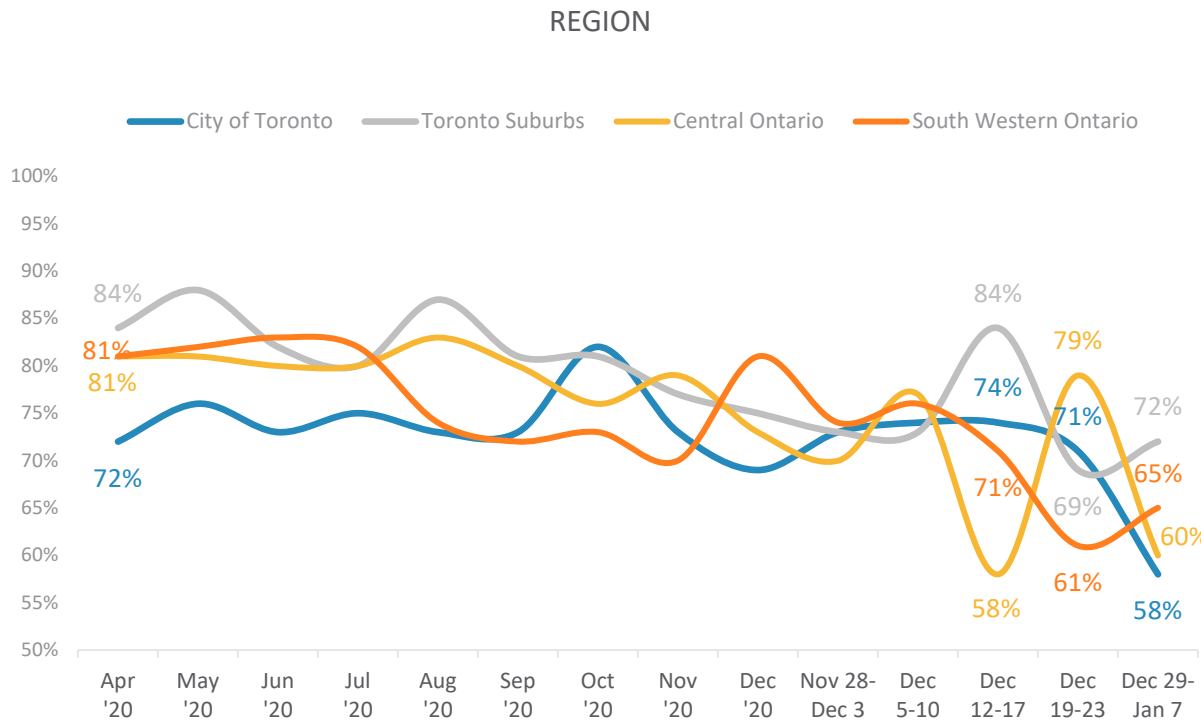
These graphs are based on 5 day roll in order to boost the sample sizes.

Q2. Overall, do you feel that the Ontario provincial government is on the right track or the wrong track, in terms of how it is governing the province?

Base: Total sample

The 'right track' scores have dropped substantially among those earning under \$40k, perhaps as they are more likely to feel the effects of the shutdown.

Right Track Scores – 6-Day Roll



These graphs are based on 5 day roll in order to boost the sample sizes.

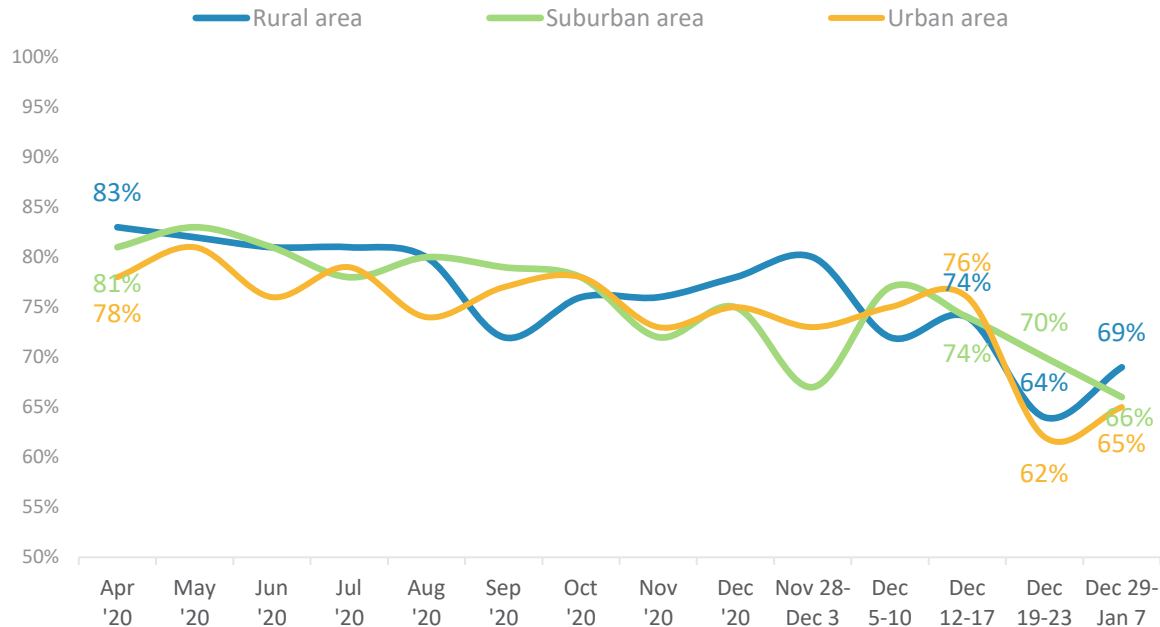
Q2. Overall, do you feel that the Ontario provincial government is on the right track or the wrong track, in terms of how it is governing the province?

Base: Total sample

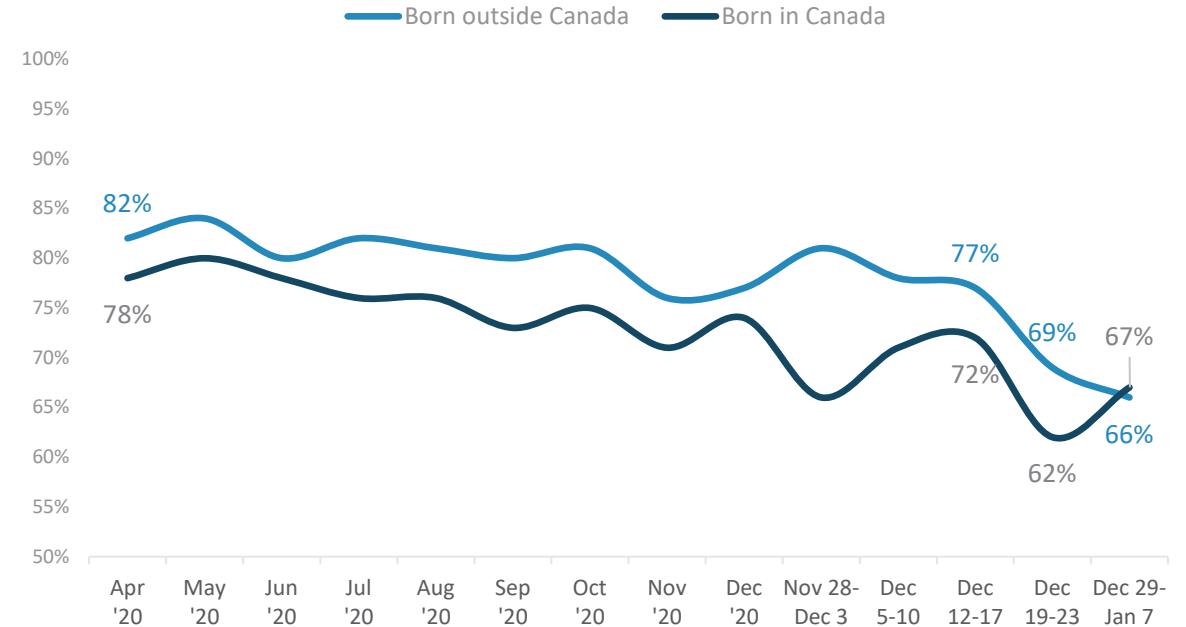
The 'right track' scores have declined, particularly among those born outside of Canada over the past two waves.

Right Track Scores – 6-Day Roll

RURAL/URBAN/SUBURBAN



BORN OUTSIDE/WITHIN CANADA



These graphs are based on 5 day roll in order to boost the sample sizes.

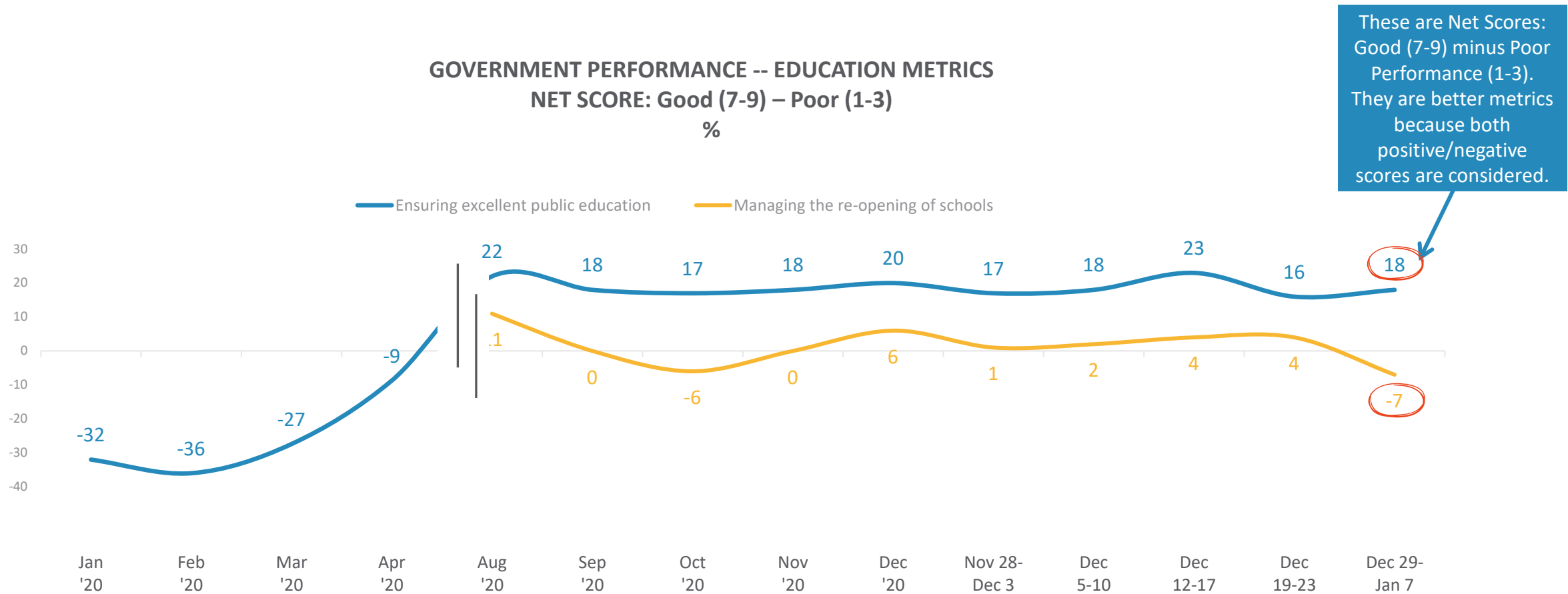
Q2. Overall, do you feel that the Ontario provincial government is on the right track or the wrong track, in terms of how it is governing the province?

Base: Total sample

PERCEPTIONS OF
GOVERNMENT PERFORMANCE
DURING COVID-19 PANDEMIC



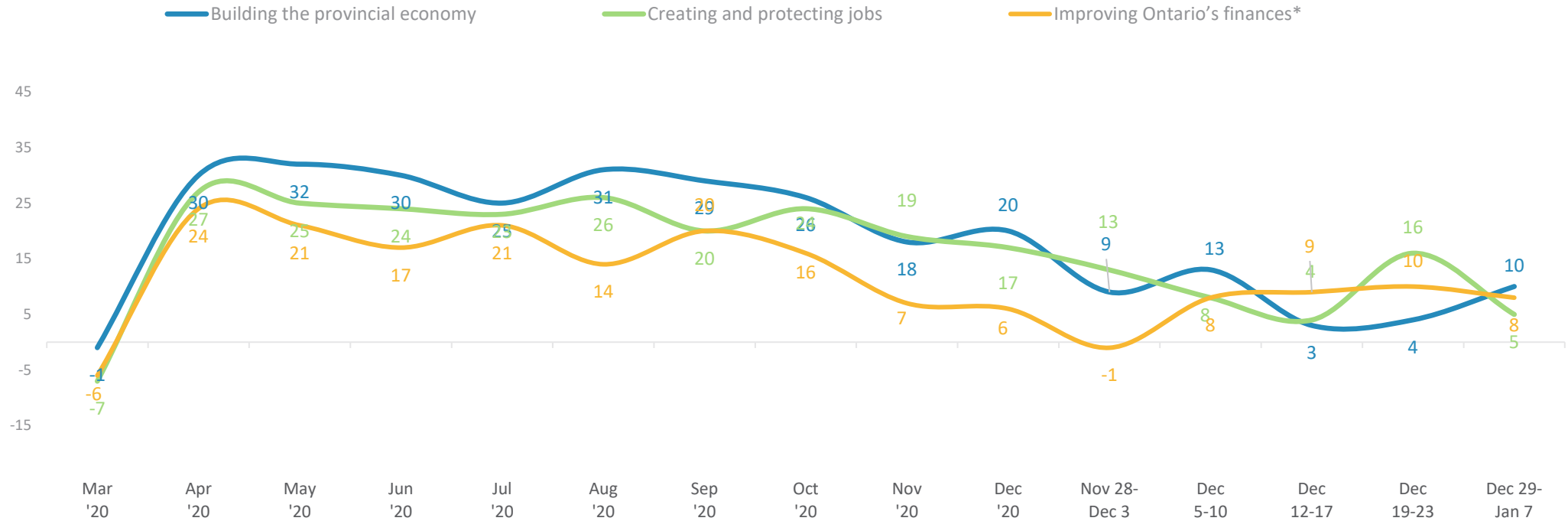
Considering both positive/negative ratings, perceptions toward the government’s performance on ‘ensuring excellent public education’ remains stable. In contrast, ‘managing the re-opening of schools’ has declined in light of the in-person classes being shifted to online.



Q5. Using a scale where, where 1 means “poor” and nine is “excellent”, how would you rate the performance of Ontario government at managing each of the following?
 Bases vary

When considering both positive/negative ratings, perceptions of the government’s performance on economic metrics continue to remain well below the scores registered last Summer.

GOVERNMENT PERFORMANCE – ECONOMIC/GOVERNMENT SPENDING METRICS
NET SCORE: Good (7-9) – Poor (1-3)
 %



Q5. Using a scale where, where 1 means “poor” and nine is “excellent”, how would you rate the performance of Ontario government at managing each of the following?

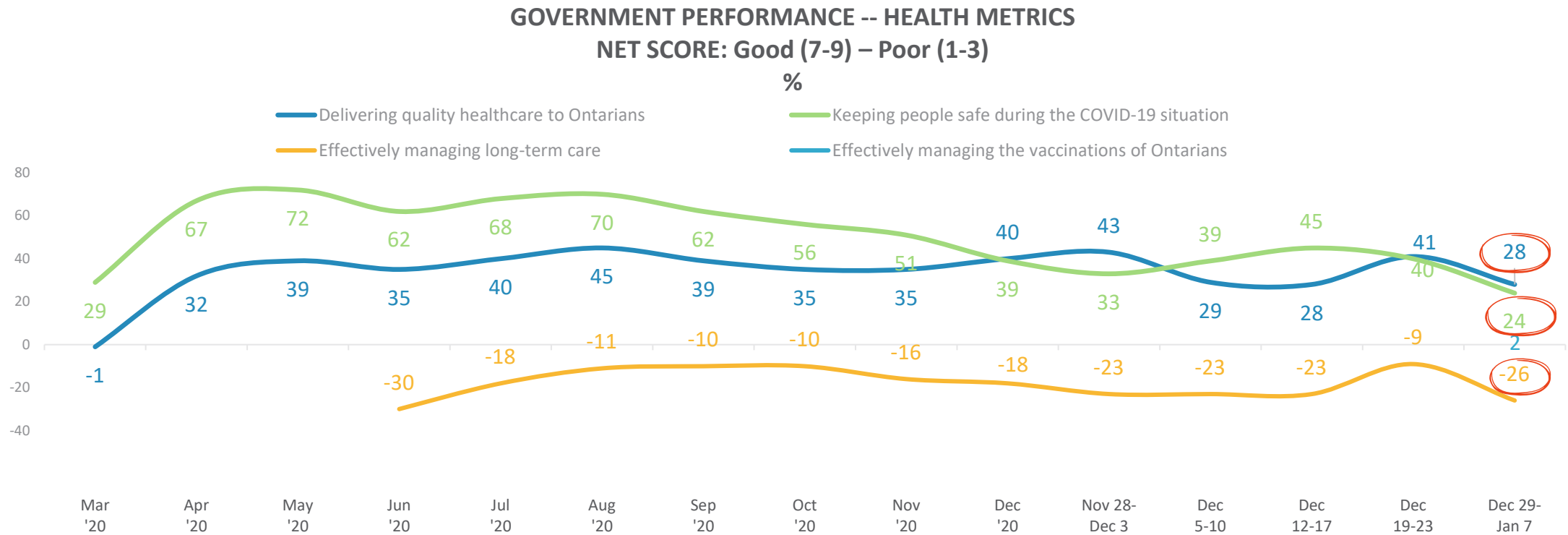
*Former phrasing: “Improve Ontario’s finances”

**Former phrasing: “Sufficient business support during the COVID-19 situation”

Bases vary

The government’s performance on key health metrics - ‘keeping people safe during the COVID-19 situation’, ‘delivering quality health care to Ontarians’ and ‘effectively managing long-term care’ - have declined over the past 10 days. These declines likely stem from the rising infection cases.

- The biggest drops occurred on ‘keeping people safe during the COVID-19 situation’ (16-points) and ‘keeping people save during COVID-19 situation’ 21).
- Its performance in effectively managing vaccinations is at +2, well below ‘keeping safe from the COVID-19 situation’ and ‘delivering quality heath care.’

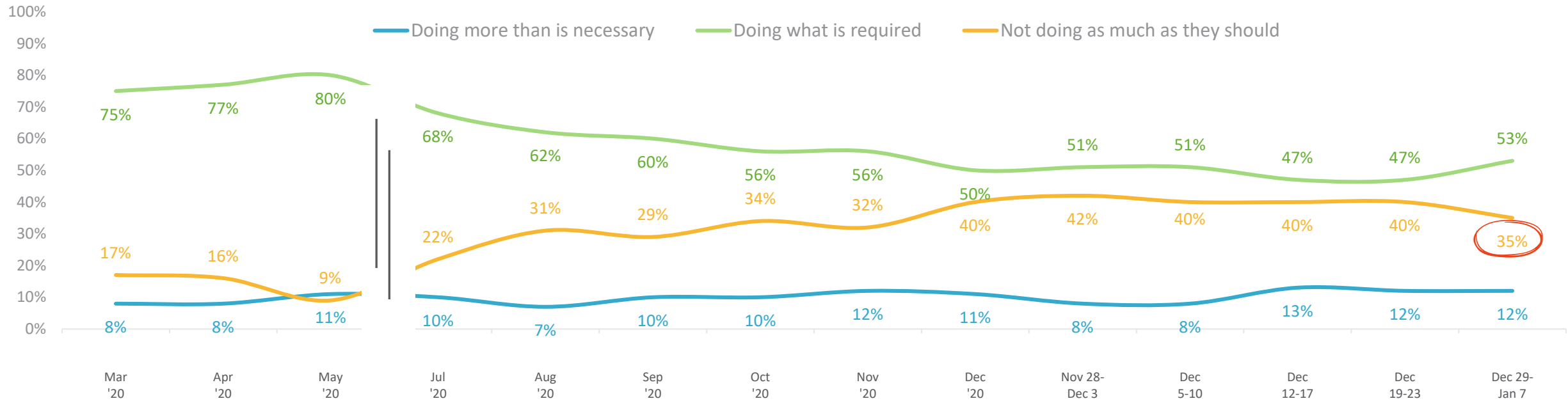


Q5. Using a scale where, where 1 means “poor” and nine is “excellent”, how would you rate the performance of Ontario government at managing each of the following?
Bases vary

ONTARIO GOVERNMENT COVID-19 MEASURES

The proportion who think the government is ‘not doing as much as they should’ on COVID-19 has dropped slightly to 35%.

	Doing what is required															Not doing as much as they should														
	Mar '20	Apr '20	May '20	June '20	Jul '20	Aug '20	Sep '20	Oct '20	Nov '20	Dec '20	Nov 28- Dec 3	Dec 5-10	Dec 12-17	Dec 19-23	Dec 29- Jan 7	Mar '20	Apr '20	May '20	June '20	Jul '20	Aug '20	Sep '20	Oct '20	Nov '20	Dec '20	Nov 28- Dec 3	Dec 5-10	Dec 12-17	Dec 19-23	Dec 29- Jan 7
Right Track	76%	79%	82%	n/a	75%	70%	68%	66%	66%	60%	61%	61%	58%	60%	62%	15%	13%	8%	n/a	15%	23%	21%	25%	22%	31%	32%	32%	29%	31%	28%
Wrong Track	73%	66%	66%	n/a	42%	33%	35%	25%	26%	19%	24%	21%	15%	24%	34%	21%	26%	19%	n/a	48%	57%	56%	61%	60%	66%	68%	66%	74%	59%	50%



QCV-6. Thinking about the measures that the Government of Ontario has already taken to limit the spread of the virus, including advising the public and businesses about prevention measures, shutting down the province for several weeks, and keeping kids out of school, at this time would you say they are ... (previous phrasing) Thinking about the measures that the Government of Ontario has already taken to limit the spread of the virus, including advising the public and businesses about prevention measures, gradually reopening the province, and planning for the return to school in the fall, at this time would you say they are ... (previous phrasing) Thinking about the measures that the Government of Ontario has already taken to limit the spread of the virus, including issuing a Declaration of Emergency, ordering non-essential businesses to close, advising the public and businesses about prevention measures and closing publicly funded schools, at this time would you say they are ... (READ LIST. RANDOMIZE ACCEPT ONE RESPONSE ONLY.) (previous phrasing) Thinking about the measures that the Government of Ontario has already taken to limit the spread of the virus, including advising the public and businesses about prevention measures and closing publicly funded schools, at this time would you say they are ...

Base: Total sample, base varies

COVID-19 INFECTIONS



Similar to last June, most Ontarians recognize that COVID-19 infection cases will be around for a while, even though the vaccination rollout is occurring.

I am willing to live with the fact that there will continue to be some cases of COVID-19 for quite a while yet

	Jun '20	Dec 29-Jan 7
n=	varies	
	%	%
TOTAL AGREE	88	86
Strongly agree	54	57
Somewhat agree	33	29
Neither agree nor disagree	4	5
Somewhat disagree	4	3
Strongly disagree	3	4
TOTAL DISAGREE	8	7
Don't know	1	2

QCV-8B. Do you agree or disagree with each of the following statements about the effects of COVID-19. The first is ...

Base: Total sample, base varies

Compared to the Spring, Ontarians are slightly less like to believe the idea that staying home means saving lives.

I believe that I am saving lives by staying at home

	Apr '20	May '20	Dec 29-Jan 7
n=	varies		
	%	%	%
TOTAL AGREE	90	87	83
Strongly agree	69	63	59
Somewhat agree	21	24	23
Neither agree nor disagree	2	4	2
Somewhat disagree	4	6	6
Strongly disagree	2	2	8
TOTAL DISAGREE	6	8	14
Not applicable	1	1	2
Don't know	<1	<1	<1

QCV-14. To what extent do you agree or disagree with the following statements?

Base: Total sample

THE LACK OF SOCIAL LIFE IS DIFFICULT

Compared to last Spring, in the last wave Ontarians are much more likely to agree that a lack of a social life is extremely difficult.

I find a lack of a social life extremely difficult

	Apr '20	May '20	Jun '20	Dec 29-Jan 7
n=	varies			
	%	%	%	%
TOTAL AGREE	52	55	54	65
Strongly agree	24	25	22	33
Somewhat agree	28	30	32	33
Neither agree nor disagree	8	7	6	6
Somewhat disagree	22	20	23	14
Strongly disagree	18	17	17	15
TOTAL DISAGREE	39	37	40	28
Not applicable	<1	<1	-	<1
Don't know	<1	<1	<1	-

QCV-14. To what extent do you agree or disagree with the following statements?

Base: Total sample

Despite this increasing fatigue in staying home, most Ontarians (similar to last May) continue to reject the idea that they would rather take a chance on getting COVID-19 than continue staying at home.

I am starting to feel that I would rather take a chance on getting COVID-19 than continue staying at home

	May '20	Dec 29-Jan 7
n=	varies	
	%	%
TOTAL AGREE	17	19
Strongly agree	8	12
Somewhat agree	9	7
Neither agree nor disagree	3	3
Somewhat disagree	16	14
Strongly disagree	63	62
TOTAL DISAGREE	79	76
Don't know	1	2

QCV-8B. Do you agree or disagree with each of the following statements about the effects of COVID-19. The first is ...

Base: Total sample, base varies

Still, three-quarters say that they are only leaving their homes to go to the grocery store and the pharmacy.

I am only leaving my house to go to the grocery store and the pharmacy

	Apr '20	May '20	Dec 29-Jan 7
n=	varies		
	%	%	%
TOTAL AGREE	79	77	76
Strongly agree	62	57	56
Somewhat agree	16	20	20
Neither agree nor disagree	2	2	3
Somewhat disagree	8	10	11
Strongly disagree	8	9	7
TOTAL DISAGREE	16	19	18
Not applicable	3	1	2
Don't know	1	1	1

QCV-14. To what extent do you agree or disagree with the following statements?

Base: Total sample

LONG-TERM CARE HOMES NEED TO BE MORE EFFECTIVELY ISOLATED

Similar to last Spring, Ontarians overwhelmingly support the idea that long-term care homes need to be more effectively isolated.

*Long term care homes including retirement and nursing homes need to be more effectively isolated**

	Apr '20	May '20	Dec 29-Jan 7
n=	varies		
	%	%	%
TOTAL AGREE	86	87	88
Strongly agree	66	64	70
Somewhat agree	20	23	18
Neither agree nor disagree	5	3	4
Somewhat disagree	5	5	1
Strongly disagree	3	4	5
TOTAL DISAGREE	7	9	6
Not applicable	1	<1	-
Don't know	1	1	2

QCV-14. To what extent do you agree or disagree with the following statements?

*Previous phrasing: Retirement and nursing homes need to be more effectively isolated

Base: Total sample

Compared to last Summer, Ontarians are less likely to say they are doing their best to live a normal pre-COVID-19 life.

I am doing my best to get back to living a normal pre-COVID-19 life

	Jun '20	Jul '20	Aug '20	Sep '20	Oct '20	Nov '20	Dec '20	Dec 29-Jan 7
n=	varies							
	%	%	%	%	%	%	%	%
TOTAL AGREE	71	72	76	77	67	64	63	64
Strongly agree	38	37	44	49	36	35	40	42
Somewhat agree	33	35	33	28	32	29	23	22
Neither agree nor disagree	7	6	4	4	6	7	4	4
Somewhat disagree	14	13	11	10	14	16	12	12
Strongly disagree	8	8	8	8	11	12	18	18
TOTAL DISAGREE	22	21	19	18	25	28	30	30
Not applicable	<1	<1	<1	<1	<1	<1	1	2
Don't know	<1	1	1	1	1	1	2	-

QCV-14. To what extent do you agree or disagree with the following statements?

Base: Total sample

IS ONTARIO READY FOR THE SECOND WAVE?



DID ALL IT COULD OR COULD HAVE ACTED DIFFERENTLY

There has been steady increase in the perception that the government ‘could have acted differently’ in dealing with the pandemic.

	Sep 26- Oct 1	Oct 3-8	Oct 10-15	Oct 17-22	Oct 24-29	Oct 31- Nov 5	Nov 7-12	Nov 14-19	Nov 21-26	Nov 28- Dec 3	Dec 5-10	Dec 12-17	Dec 19-23	Dec 29- Jan 7
n=	300	300	300	300	300	300	300	300	300	300	300	300	300	400
	%	%	%	%	%	%	%	%	%	%	%	%	%	%
All it could reasonably be expected to do	44	52	47	44	43	45	47	39	33	34	37	37	34	31
Could have acted differently	55	47	53	55	56	52	49	56	63	59	60	62	62	67
Don't know/Not sure	1	1	<1	2	1	2	3	5	4	6	3	2	4	2

	All it could reasonably be expected to do														Could have acted differently													
	Sep 26- Oct 1	Oct 3-8	Oct 10-15	Oct 17-22	Oct 24-29	Oct 31- Nov 5	Nov 7-12	Nov 14-19	Nov 21-26	Nov 28- Dec 3	Dec 5-10	Dec 12-17	Dec 19-23	Dec 29- Jan 7	Sep 26- Oct 1	Oct 3-8	Oct 10-15	Oct 17-22	Oct 24-29	Oct 31- Nov 5	Nov 7-12	Nov 14-19	Nov 21-26	Nov 28- Dec 3	Dec 5-10	Dec 12-17	Dec 19-23	Dec 29- Jan 7
Right Track	52%	61%	55%	49%	56%	54%	58%	46%	39%	44%	43%	45%	46%	41%	46%	37%	44%	49%	44%	43%	39%	47%	57%	50%	54%	53%	51%	57%
Wrong Track	12%	14%	22%	27%	17%	19%	10%	15%	10%	9%	19%	12%	12%	13%	88%	86%	78%	72%	81%	80%	86%	84%	87%	83%	78%	88%	82%	87%

QCV-130. Overall, given the recent increases in reported cases, do you believe the Ontario Government has done all it can reasonably be expected to do or could it have acted differently?

Base: Total sample

GOVERNMENT DID NOT MOVE AS QUICKLY AS IT COULD TO STOP THE SPREAD OF COVID-19

Compared to last Spring, Ontarians are much more likely to believe that the government has not moved quickly enough to stop the spread of COVID-19.

The provincial government has not moved as quickly as it could to try to stop the spread of COVID-19

	Apr '20	May '20	Dec 29-Jan 7
n=	varies		
	%	%	%
TOTAL AGREE	43	40	60
Strongly agree	19	17	37
Somewhat agree	24	23	23
Neither agree nor disagree	7	8	7
Somewhat disagree	28	29	17
Strongly disagree	21	22	14
TOTAL DISAGREE	49	51	31
Not applicable	<1	<1	<1
Don't know	1	1	1

QCV-14. To what extent do you agree or disagree with the following statements?

Base: Total sample

COVID-19 RESTRICTIONS



SHUTTING DOWN THE PROVINCE WAS APPROPRIATE OR OVERREACTION

Most Ontarians overwhelmingly believe that the provincial shutdown was an appropriate reaction. Very few felt it was an overreaction.

	Dec 29-Jan 7
n=	400
	%
Appropriate reaction	85
An overreaction	13
Don't know	2

QCV-171. As you may have heard, in response an increasing number of COVID infections in the province and concerns about the impact on the hospitals to handle the increasing numbers of people requiring hospitalization, the provincial government has announced that provincial wide shutdown in order to reduce community transmission of the COVID-19 virus. This shutdown will be for apply to Southern Ontario until January 25th and Northern Ontario until January 11th. Considering the COVID-19 situation in Ontario, do you believe that this decision is appropriate or an overreaction...

Base: Total sample

PERCEIVED EFFECTIVENESS OF THE PROVINCIAL SHUTDOWN

There is broad consensus that the provincial shutdown will reduce both the number of people requiring hospitalizations and the number of COVID-19 cases in the province.

% Very/Somewhat effective	Dec 29-Jan 7
n=	400
	%
In reducing the number of people requiring hospitalization	80
In reducing the number of COVID 19 cases in the province	79
Once the shutdown period is over allowing most of the province to move to a more relaxed set of regulations	62

QCV-172. For each of the following, please tell me, how effective do you believe this shutdown will be?

Base: Total sample

IF INFECTIONS CONTINUE TO RISE, SHOULD THE PROVINCIAL SHUTDOWN BE EXTENDED

Similarly, Ontarians also believe that if infections continue to rise, the shutdown should be extended.

	Dec 29-Jan 7
n=	400
	%
TOTAL AGREE	77
Strongly agree	54
Somewhat agree	23
Neither agree nor disagree	4
Somewhat disagree	8
Strongly disagree	10
TOTAL DISAGREE	18
Don't know/Not sure	1

QCV-173. If the number of COVID-19 infection cases continue to increase, do you agree is agree that the provincial shutdown be extended?

Base: Total sample

MASK WEARING PERCEPTIONS



FREQUENCY OF FACE MASK WEARING

Reflecting the increasing concerns about the number of rising infections, wearing masks or face coverings ‘all/some of the time’ reached its highest level.

- Not surprisingly, Northern Ontario is the region with the lowest incidence of wearing face covering.

	Jul '20	Aug '20	Sep '20	Oct '20	Nov '20	Dec '20	Dec 5-10	Dec 12-17	Dec 19-23	Dec 29-Jan 7
n=	1752	1200	1200	1200	1200	1200	300	300	300	400
%	%	%	%	%	%	%	%	%	%	%
TOTAL ALL/MOST OF THE TIME	60	77	83	87	88	90	90	92	90	93
All of the time	29	49	55	63	67	71	72	72	74	73
Most of the time	30	28	28	24	21	19	18	20	16	20
Some of the time	23	16	12	9	9	6	7	6	7	5
Rarely	14	7	4	3	3	3	3	2	2	1
Never	3	1	1	1	1	1	1	<1	<1	1
RARELY/NEVER	17	8	5	4	3	4	3	2	3	2

REGIONS	City of Toronto						Toronto Suburbs						Hamilton						Central Ontario						South Western Ontario						Northern Ontario						Eastern Ontario						Ottawa					
	Nov '20	Dec '20	Dec 5-10	Dec 12-17	Dec 19-23	Dec 29-Jan 7	Nov '20	Dec '20	Dec 5-10	Dec 12-17	Dec 19-23	Dec 29-Jan 7	Nov '20	Dec '20	Dec 5-10	Dec 12-17	Dec 19-23	Dec 29-Jan 7	Nov '20	Dec '20	Dec 5-10	Dec 12-17	Dec 19-23	Dec 29-Jan 7	Nov '20	Dec '20	Dec 5-10	Dec 12-17	Dec 19-23	Dec 29-Jan 7	Nov '20	Dec '20	Dec 5-10	Dec 12-17	Dec 19-23	Dec 29-Jan 7	Nov '20	Dec '20	Dec 5-10	Dec 12-17	Dec 19-23	Dec 29-Jan 7	Nov '20	Dec '20	Dec 5-10	Dec 12-17	Dec 19-23	Dec 29-Jan 7
TOTAL ALL/MOST OF THE TIME	91%	94%	97%	95%	96%	92%	89%	90%	94%	92%	96%	95%	86%	90%	95%	97%	92%	91%	83%	90%	87%	86%	90%	94%	86%	87%	83%	91%	81%	99%	89%	91%	83%	93%	84%	85%	92%	88%	94%	86%	86%	90%	87%	86%	75%	89%	95%	89%

	RIGHT TRACK						WRONG TRACK					
	Nov '20	Dec '20	Dec 5-10	Dec 12-17	Dec 19-23	Dec 29-Jan 7	Nov '20	Dec '20	Dec 5-10	Dec 12-17	Dec 19-23	Dec 29-Jan 7
TOTAL ALL/MOST OF THE TIME	90%	92%	91%	92%	93%	97%	82%	83%	85%	89%	85%	85%

QD1B. As a result of COVID-19 and thinking about your daily activities when you are away from home, how often do you wear a face mask or covering?

Base: Total sample

VACCINE



About 1-in-2 are optimistic that the end of COVID-19 is nearer now that a vaccine is ready and being administered, although there is a significant minority (45%) who say they are not confident the end of the pandemic is nearer.

- Those who think the government is on the 'right track' are more likely to be confident that the COVID-19 vaccine will bring an end to the pandemic compared to those who think the government is on the 'wrong track'.

I am confident the end of COVID-19 is near now that it appears a vaccine is nearly ready

	Nov 21-26	Nov 28-Dec 3	Dec 5-10
n=	varies		
	%	%	%
TOTAL AGREE	35	38	38
Strongly agree	12	15	14
Somewhat agree	23	24	24
Neither agree nor disagree	10	10	12
Somewhat disagree	18	20	22
Strongly disagree	32	30	25
TOTAL DISAGREE	50	50	47
Don't know	5	2	3

*I am confident the end of COVID-19 is nearer now that a vaccine is ready and now being administered**

	Dec 12-17	Dec 19-23	Dec 29-Jan 7
n=	varies		
	%	%	%
TOTAL AGREE	53	51	48
Strongly agree	19	10	17
Somewhat agree	34	41	30
Neither agree nor disagree	5	9	6
Somewhat disagree	19	20	20
Strongly disagree	21	20	26
TOTAL DISAGREE	40	40	45
Don't know	2	-	1

QCV-8B. Do you agree or disagree with each of the following statements about the effects of COVID-19. The first is ...

*Previous phrasing: *I am confident the end of COVID-19 is nearer now that a vaccine is ready and being used*

Base: Total sample, base varies

THE EXTENT TO WHICH ONTARIANS ARE FOLLOWING NEWS ABOUT COVID-19 VACCINE

Not surprisingly, Ontarians continue to follow, with a high degree of intensity, the announcements on vaccines against COVID-19. However, interest has lessened somewhat in the latest wave.

	Nov 21-26	Nov 28- Dec 3	Dec 5-10	Dec 12-17	Dec 19-23	Dec 29- Jan 7
n=	150	300	300	196	150	199
	%	%	%	%	%	%
TOTAL CLOSELY	78	77	87	88	89	89
Very closely	46	42	48	52	65	46
Somewhat closely	33	35	39	36	24	43
Not very closely	13	15	8	8	8	8
Not at all	7	8	4	4	3	4
TOTAL NOT VERY CLOSELY/NOT AT ALL	20	23	12	12	11	11
Don't know/not sure	2	<1	1	<1	-	-

QCV-160. As you may know, there has been a series of announcements on COVID-19 vaccines. How closely are you following the news of on about these new vaccines? (previous phrasing) As you may know, there has been a series of announcements on vaccines against the COVID-19 virus. How closely are you following the news about these new vaccines?

Base: Total sample

Putting a higher priority on people with underlying health issues receiving the vaccine earlier than other Ontarians continues to trend downward.

All Mentions

	Nov 21-26	Nov 28- Dec 3	Dec 5-10	Dec 12-17	Dec 19-23	Dec 29- Jan 7
n=	Varies					
	%	%	%	%	%	%
Frontline health workers	87	89	94	96	98	95
People over 70 years old	65	59	65	63	61	58
People living in long-term care homes	33	40	52	54	52	52
People with underlying health issues	49	53	43	40	39	35
Essential retail workers such as those working in grocery and drug stores	33	25	17	17	22	22
All Ontarians over the age of 18	17	20	14	10	10	18
Teachers	10	12	11	17	16	14
Restaurant and bar workers	3	1	2	2	1	4
Non-essential retail workers such as those working in clothing and electronic stores, among others	3	2	2	2	2	2

QCV-161. Now that COVID-19 vaccines are available and being administered, in your opinion, which group of people should be prioritized to get the vaccine first? Who should be given second priority? Third priority? (previous phrasing) Once the vaccine for COVID-19 is available, the Ontario government will be responsible for distributing the vaccine. In your opinion, which group of people should be prioritized to get the vaccine first? Who should be given second priority? Third priority?

Base: Total sample

SUPPORT FOR SMALL BUSINESS DURING COVID-19



Compared to last Spring, Ontarians are less likely to believe that the government is doing all it can to ensure essential businesses remain free from COVID-19.

The provincial government is doing all it can to ensure those working in essential industries and services remain free from COVID-19

	Apr '20	May '20	Dec 29-Jan 7
n=	varies		
	%	%	%
TOTAL AGREE	66	69	56
Strongly agree	24	23	22
Somewhat agree	42	45	34
Neither agree nor disagree	6	7	6
Somewhat disagree	16	14	20
Strongly disagree	10	9	16
TOTAL DISAGREE	26	22	37
Not applicable	1	<1	<1
Don't know	2	1	1

QCV-14. To what extent do you agree or disagree with the following statements?

Base: Total sample

About 6-in-10 claim knowledge of government support for small business impacted by COVID-19 health restrictions.

	Dec 12-17	Dec 19-23	Dec 29-Jan 7
n=	300	250	400
	%	%	%
TOTAL A GREAT DEAL/SOME	58	53	59
A great deal	9	11	11
Some	49	42	47
Not too much	27	34	28
None at all	9	6	8
TOTAL NOT TOO MUCH/NONE AT ALL	35	39	36
Don't know/not sure	7	8	5

QCV-164. Overall, and to the best of your knowledge, how much support has the Ontario government provided to small business and especially those impacted by the public health restrictions?

Base: Total sample

Ontarians believe that these programs are helpful to small business.

% VERY/SOMEWHAT HELPFUL	Dec 12-17	Dec 19-23	Dec 29-Jan 7
n=	300	250	varies
	%	%	%
Working with the federal government, providing a commercial rent relief program to small businesses between April and September.	88	82	82
One-time grants for small businesses to offset the costs of associated with procuring personal protective equipment or PPE.	83	84	86
A program that offers rebates for fixed business costs like property tax and energy bills.	80	85	86
Allowing municipalities to provide targeted property tax relief for small businesses by 2022–2023.	78	71	74
A reduction in the cost of hydro for small businesses and farms	-	-	82

QCV-168. Starting in April, the government of Ontario provided specific programs to assist small businesses who were faced with restrictions and slowdowns because of COVID-19. How helpful do you feel each of these programs has been to small businesses?

Base: A great deal, some or not too much at QCV-164

Just over one-third support the government ordering even more businesses to close.

The provincial government should order even more businesses to close

	Apr '20	May '20	Dec 29-Jan 7
n=	varies		
	%	%	%
TOTAL AGREE	43	29	35
Strongly agree	23	15	19
Somewhat agree	21	14	17
Neither agree nor disagree	11	8	6
Somewhat disagree	25	29	24
Strongly disagree	20	34	33
TOTAL DISAGREE	45	63	57
Don't know	1	-	2

QCV-8B. Do you agree or disagree with each of the following statements about the effects of COVID-19. The first is ...

Base: Total sample, base varies

HOLIDAY SEASON CELEBRATIONS



PLANS FOR THE HOLIDAY SEASON

About 80% of Ontarians indicate they did not celebrate the Holiday season with people outside their bubble. A significant proportion – 16% – celebrated in-person with people outside of their household.

The Holiday season is approaching. Which of the following are you most likely to do over the Holiday season?

	Nov 14-19	Nov 21-26	Nov 28-Dec 3	Dec 5-10	Dec 12-17	Dec 19-23
n=	Varies					
	%	%	%	%	%	%
Celebrate in-person with people you do not live with	22	21	20	17	17	15
Celebrate in-person only with the people who live in your immediate household	72	74	74	79	80	83
Don't know/Not sure	5	6	6	3	3	2

With the recent Holiday season in the past, which of the following did you do over the Holiday season?

	Dec 29-Jan 7
n=	Varies
	%
Celebrated in-person with people you do not live with	16
Celebrated in-person only with the people who live in your immediate household	80
Don't know/Not sure	4

QCV-157a. (Q157) With the recent Holiday season in the past . Which of the following did you do over the Holiday season? (previous phrasing) The Holiday season is approaching. Which of the following are you most likely to do over the Holiday season?

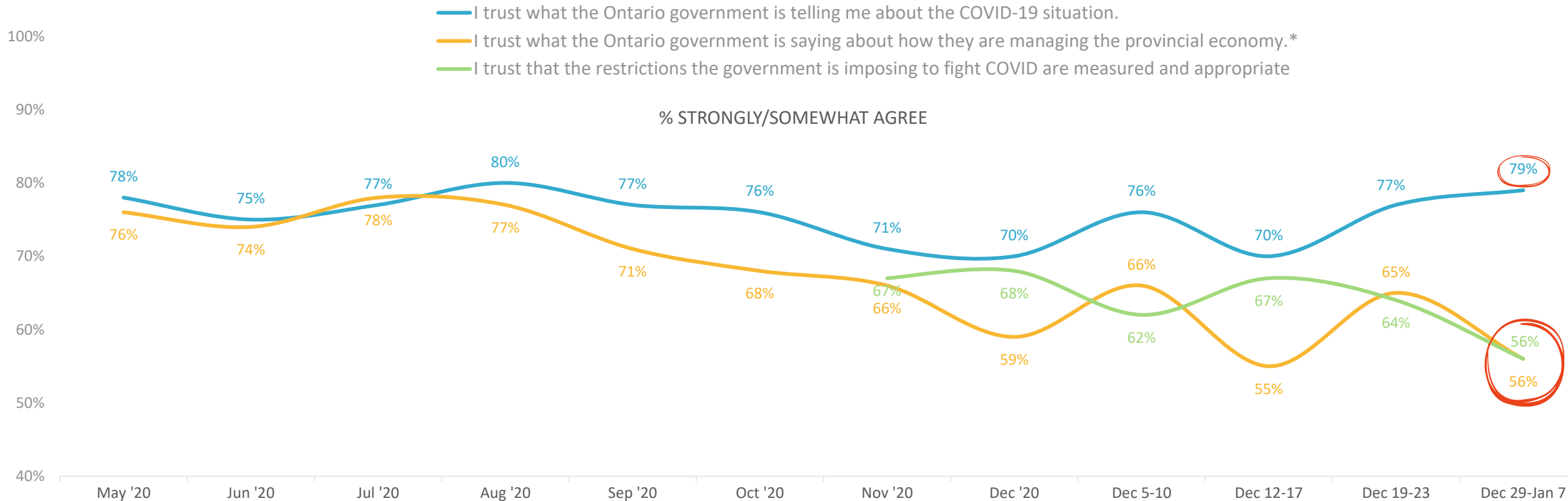
Base: Total sample

CONFIDENCE IN GOVERNMENT COVID-19 MESSAGING



TRUST IN THE GOVERNMENT'S COMMUNICATIONS ABOUT COVID-19

In recent waves, a substantial gap has opened up on trust. On the one hand, Ontarians' trust in the government's communications about COVID-19 is high and rising while, on the other hand, trust in 'managing the provincial economy' and that COVID-19 restrictions will be measured and appropriate have declined.



QCV-8B. Do you agree or disagree with each of the following statements about the effects of COVID-19. The first is ...

* Previous phrasing: I trust what the Ontario government is saying about how they are re-opening the provincial economy. / I trust what the Ontario government is saying about how they plan to re-open the provincial economy

Base: Total sample, base varies

Most Ontarians feel they have access to enough information about COVID-19.

I feel that I have enough information about COVID-19

	Jun '20	Jul '20	Aug '20	Dec 29-Jan 7
n=	varies			
	%	%	%	%
TOTAL AGREE	69	71	71	80
Strongly agree	41	41	39	49
Somewhat agree	28	31	31	30
Neither agree nor disagree	2	3	4	3
Somewhat disagree	15	14	15	8
Strongly disagree	13	11	9	9
TOTAL DISAGREE	28	25	24	17
Not applicable	-	<1	1	-
Don't know	<1	<1	1	<1

QCV-14. To what extent do you agree or disagree with the following statements?

Base: Total sample

Just under 1-in-2 say that they are paying attention to news or information about COVID-19.

I'm paying less attention to news or information about COVID-19

	Jun '20	Jul '20	Aug '20	Sep '20	Oct '20	Nov'20	Dec '20	Dec 29-Jan 7
n=	varies							
	%	%	%	%	%	%	%	%
TOTAL AGREE	51	49	47	48	44	44	37	46
Strongly agree	22	19	23	26	22	20	19	29
Somewhat agree	28	30	25	22	23	23	18	17
Neither agree nor disagree	4	4	3	4	5	6	6	4
Somewhat disagree	18	18	18	14	15	16	15	16
Strongly disagree	26	28	30	33	35	34	41	33
TOTAL DISAGREE	44	46	48	47	50	50	56	49
Not applicable	<1	<1	1	<1	<1	<1	<1	-
Don't know	<1	1	2	<1	<1	1	<1	1

QCV-14. To what extent do you agree or disagree with the following statements?

Base: Total sample

DON'T NEED TO HEAR MORE NEWS ABOUT COVID-19

Compared to last Spring, Ontarians are a bit more likely to agree that they don't need to hear any more news about COVID-19.

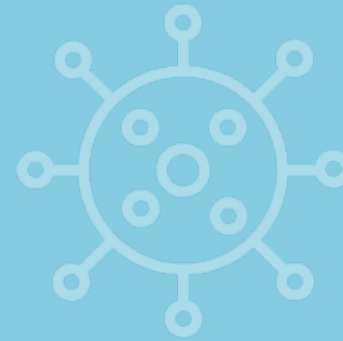
I feel that I don't need to hear any more news about COVID-19

	Jun '20	Jul '20	Aug '20	Sep '20	Oct '20	Nov '20	Dec '20	Dec 29-Jan 7
n=	varies							
	%	%	%	%	%	%	%	%
TOTAL AGREE	23	21	23	27	20	21	25	30
Strongly agree	13	10	13	15	11	11	18	16
Somewhat agree	11	10	11	12	9	10	7	14
Neither agree nor disagree	4	4	4	3	3	5	5	5
Somewhat disagree	19	25	19	18	19	19	16	20
Strongly disagree	52	50	52	51	57	55	53	44
TOTAL DISAGREE	71	75	71	69	76	74	69	63
Not applicable	-	-	<1	-	<1	-	1	-
Don't know	1	1	1	1	<1	1	1	1

QCV-14. To what extent do you agree or disagree with the following statements?

Base: Total sample

NEW COVID-19 STRAIN



Most Ontarians express concern about the new UK strain of COVID-19 being detected in Ontario.

	Dec 29-Jan 7
n=	400
	%
TOTAL CONCERNED	78
Very concerned	40
Somewhat concerned	38
Neither concerned nor not concerned	7
Somewhat not concerned	7
Not at all concerned	8
TOTAL NOT CONCERNED	14
Don't know/Not sure	<1

QCV-174. As you may have heard, this new UK strain of COVID-19 was apparently brought into Canada by international travellers. Ontario health officials have confirmed several cases of a new strain of COVID-19, first detected in the UK, is now in Ontario. How concerned are you about this new development?

Base: Total sample

Ontarians overwhelmingly support different initiatives to prevent the international spread, particularly from the UK, of COVID-19.

% Strongly/Somewhat agree	Dec 29-Jan 7
n=	400
	%
All travellers, regardless of their point of origin, should be tested for COVID-19 on arrival in Canada and ordered to self-isolate for 14 days	95
All travellers from the UK should be tested for COVID-19 on arrival in Canada and ordered to self-isolate for 14 days	95
Restrictions should be placed on anyone from the UK coming into Canada	87
The federal government ban on flights from the UK, which will expire on January 6th, should be extended to the end of January	83

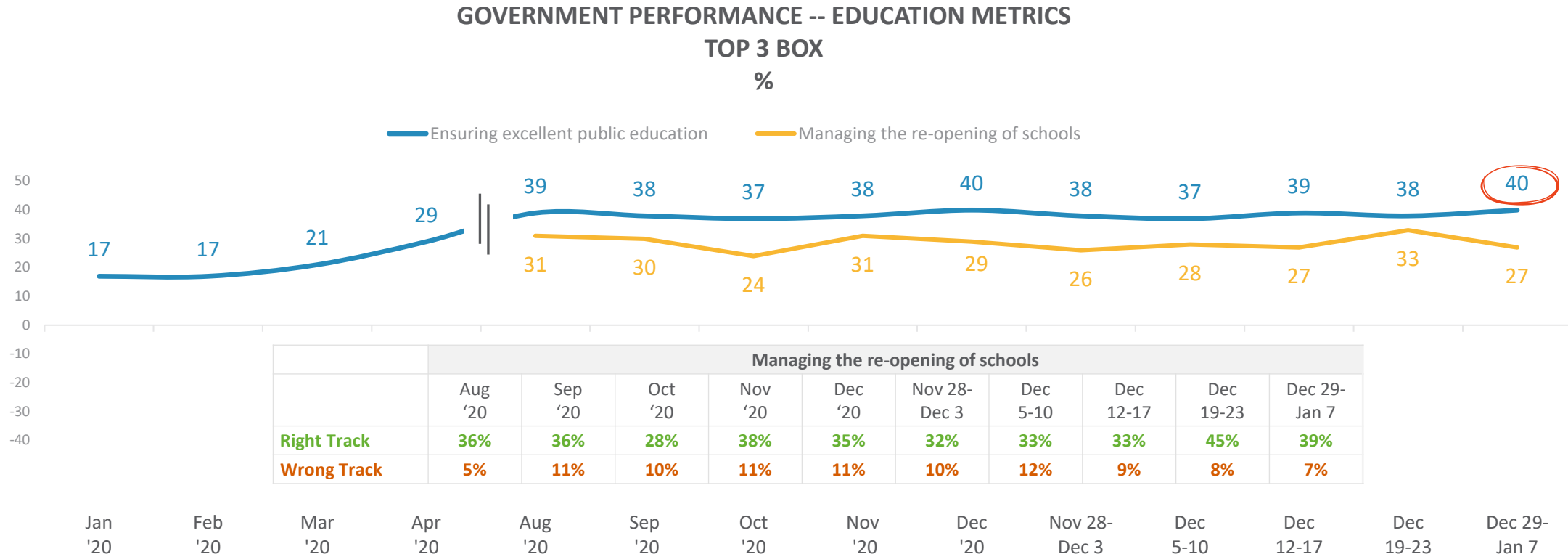
QCV-175. Do you agree or disagree with the following statements

Base: Total sample

APPENDIX



When it comes to positive perceptions, government performance scores for ‘ensuring excellent public education’ and ‘managing the re-opening of schools’ remain generally stable.

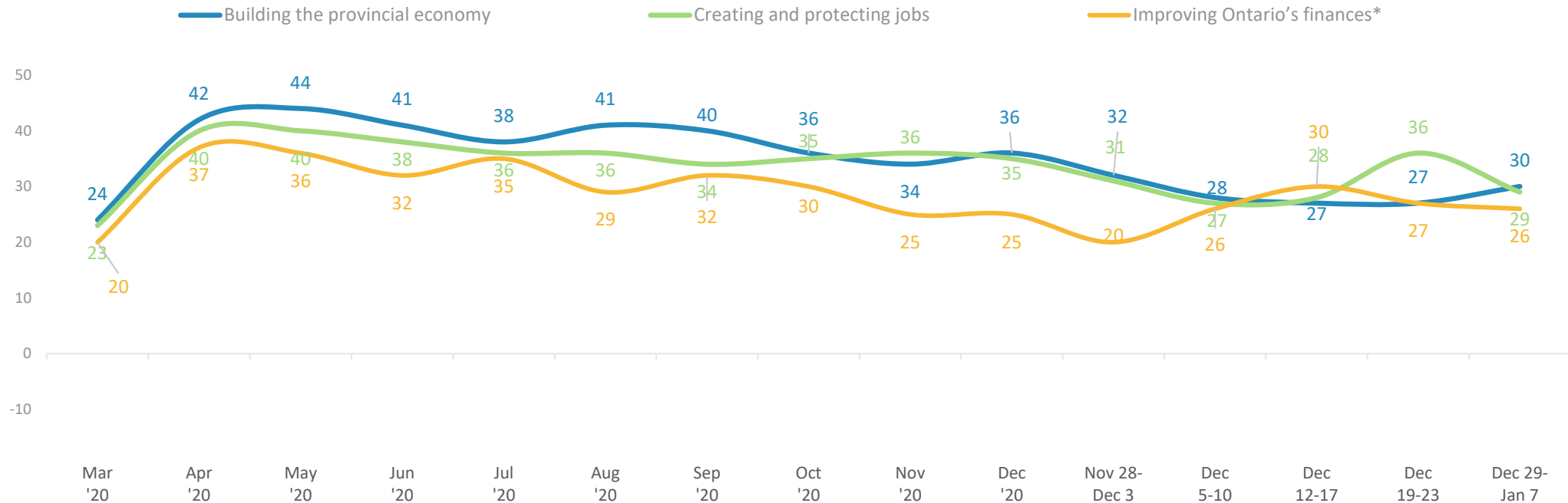


Q5. Using a scale where, where 1 means “poor” and nine is “excellent”, how would you rate the performance of Ontario government at managing each of the following?

Bases vary

Positive perceptions toward economic consideration metrics are generally lower compared to the last Summer in the latest wave.

**GOVERNMENT PERFORMANCE – ECONOMIC/GOVERNMENT SPENDING METRICS
TOP 3 BOX
%**



Q5. Using a scale where, where 1 means “poor” and nine is “excellent”, how would you rate the performance of Ontario government at managing each of the following?

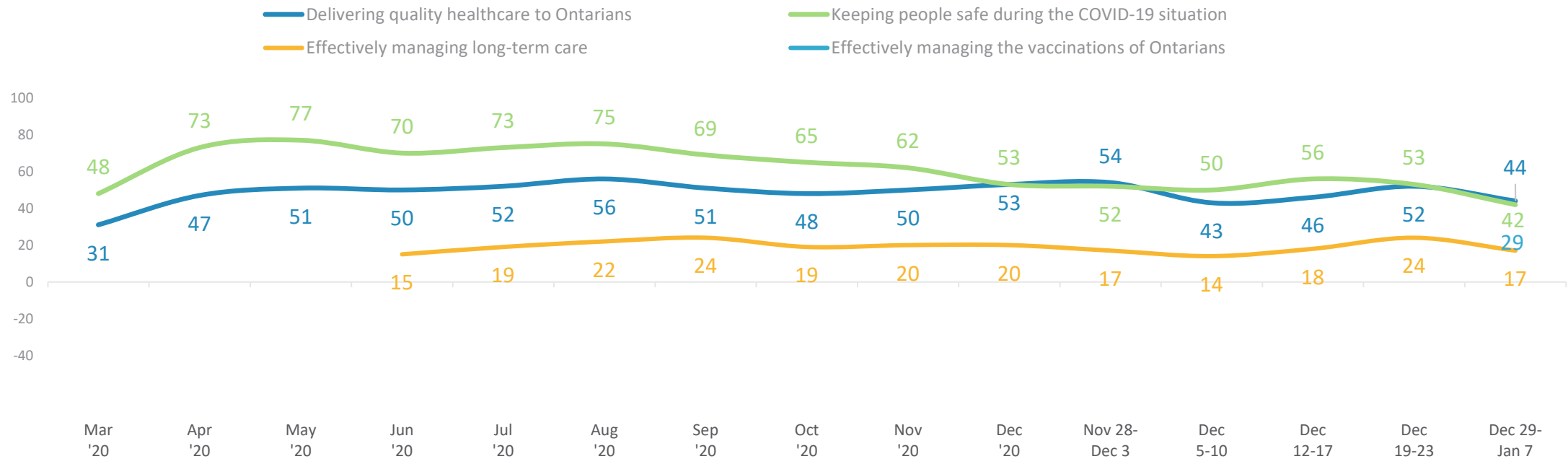
*Former phrasing: “Improve Ontario’s finances”

**Former phrasing: “Sufficient business support during the COVID-19 situation”

Bases vary

Positive perceptions of the government’s performance on key health metrics – ‘keeping people safe during the COVID-19 situation’, ‘managing long-term care’, and ‘delivering quality healthcare to Ontarians’ – are slipping.

GOVERNMENT PERFORMANCE -- HEALTH METRICS
TOP 3 BOX
 %



Q5. Using a scale where, where 1 means “poor” and nine is “excellent”, how would you rate the performance of Ontario government at managing each of the following?
 Bases vary