

Bio Clean INC
Control and Disposal of Bio & Hazardous Material
"Specialists in incident clean-up"

July 30, 2020

City of Seattle
Airport Way Center
WSP

RE: Final Report- 2203 Airport Way S., Seattle, WA

Dear Kari

Enclosed please find the final report for the above referenced property.
*Per Washington State Health Department Methamphetamine Contaminated
Property Site Remediation Requirements*; The property is now in compliance with
the cleanup standard and meets the requirements of Title 64.44 RCW.

Please contact me at 425-377-2303 for any questions.

Sincerely,



Lisa Martinez
Project Manager
Bio Clean Inc.
Supervisor DOH CDL Certification # and Expiration Date
S077-17R/ November 30, 2021

**FINAL REPORT
FOR THE DECONTAMINATION OF
METHAMPHETAMINE**

2203 Airport Way S
Building A
Seattle, WA

Created By
Bio Clean Inc
June 2, 2020

Table of Contents

I. Introduction	3
A. Case Narrative	3
B. Site Description	3
II. Site Assessment	4
III. Methods	4
A. Sampling & Analysis	4
IV. Decontamination and Cleanup	6
V. Waste Disposal	8
VI. Results	8
A. Chemical Analysis	8
B. Decontamination and Cleanup	9
Company CDL Certificate	Attachment #1
Pre-Assessment Photo Documentation	Attachment #2
Analytical Results	Attachment #3
Final Photos	Attachment #4

Final Report

2203 Airport Way S., Seattle, WA

I. Introduction

A. Case Narrative

On June 19, 2019 Lisa Martinez - # S077-17R Department of Health Certified Washington State Drug Lab Cleanup Contractor (CDL) Supervisor and Theresa Borst- # S032-17R Department of Health Certified Washington State Drug Lab Cleanup Contractor (CDL) Supervisor visited the property located in Seattle, WA to conduct a pre-sampling assessment for methamphetamine, Heroin, & Cocaine residue. Sampling was done in only certain laboratories/offices in the building.

Additional Sampling:

Lisa Martinez & Theresa Borst did additional sampling for methamphetamine only on November 20, 2019 in main office #307 of personal items, and more structured areas. On February 6, 2019 Lisa Martinez & Kameron Paulson # S227-19 Department of Health Certified Washington State Drug Lab Cleanup Contractor (CDL) Supervisor did sample in the main office #307 of the carpet only.

Bio Clean Inc. (Company CDL Certificate – **Attachment #1**) completed the decontamination portion of the work plan on **May 12, 2020**. On **May 18, 2020** laboratory analysis confirmed the areas sampled for methamphetamine residue were below Washington State clean up guidelines (**Attachment #3**).

B. Site Description

Current Property: **City of Seattle (Airport Way Center)**

Property Owner Mailing Address: **2203 Airport Way S., Bldg A, Seattle, WA 98134**

Property Representative Name/Phone Number: **Kari O'Neill 206-262-6100**

Legal Description of Fixed Property: SEATTLE TIDE LDS BLK 242 & VAC ALLEY & E 1/2 OF VAC 8TH AVE S ADJ LESS E 170 FT OF POR SLY OF MOST SLY SPUR TRACK CROSSING SD BLK TGW POR BLK 251 DAF - E 45 FT OF W 330 FT OF LOTS 1 THRU 11 & ALL 12 THRU 22 TGW POR VAC ST ADJ LESS POR LOTS 1-2-3 BAAP ON N LN SD BLK A DIST 285 FT E OF NW COR TH S PLW W LN 160 FT TH NELY 164.92 FT M/L TO PT ON N LN SD BLK 325 FT ELY OF NW COR TH OF TH WLY 40 FT TO POB

Assessors Property Tax#: **766620-3240**

Year Built: **1944 Effective Year: 2000**

A. Written detailed directions for locating the property from the nearest principal marked road:

From I5 South – Use the right 2 lanes to take exit 164 for Interstate 90 E toward Bellevue/Spokane. Use the right lane to keep right at the fork and follow signs for Interstate 5 S/Tacoma/Portland. Use the 2nd from the right lane to keep left at the fork and follow signs for Airport Way. Keep right at the fork and merge onto

Airport Way S. Continue on Airport Way S, turn right onto S. College St., turn right, turn left destination will be on left.

II. Site Assessment

(Pre-assessment photo documentation - **Attachment #2**)

Four Story Office Building constructed of concrete. The property is served public water and public sewer.

Airport Way Center consists of several large buildings. Only building A is represented in this workplan. There are four floors in the building, and we will only be addressing a few office areas located on floor three.

III. Methods

A. Sampling & Analysis

On June 19, 2019 Lisa Martinez - # S077-17R Department of Health Certified Washington State Drug Lab Cleanup Contractor (CDL) Supervisor and Theresa Borst- # S032-17R Department of Health Certified Washington State Drug Lab Cleanup Contractor (CDL) Supervisor visited the property located in Seattle, WA to conduct a pre-sampling assessment for methamphetamine residue.

Lisa Martinez & Theresa Borst did additional sampling for methamphetamine only on November 20, 2019 in main office #307 of personal items, and more structured areas.

There was one type of sampling taken during these two events. The sampling technique was wipe method which was sent in for laboratory analysis.

On February 6, 2019 Lisa Martinez & Kameron Paulson # S227-19 Department of Health Certified Washington State Drug Lab Cleanup Contractor (CDL) Supervisors did sample in the main office #307 of the carpet only.

Micro-vacuum samples were taken by using an Allegro High-Volume Sampling Pump. Micro-vacuuming method was used for sampling the carpet inside the office area.

Laboratory Analysis Sampling: The following wipe method was used for sampling inside the property

The CDL Supervisor conducted sampling, recorded and took photo documentation. Samples were placed in approved vials with screw lids provided by Analytical Chemistry. The samples were accompanied by a chain of custody which had a signature of the CDL Supervisor taking the samples, time and date. Vinyl gloves were worn during sampling. Vinyl gloves were changed into clean vinyl gloves after each sample was taken.

Wipe samples were taken by using an individual (disposable) template per sample. Each template used was a 5cm x 5cm for composite samples and a 10cm x 10cm for discrete samples. One 2 inch by 2-inch 12 ply 100% cotton gauze pad (aka gauze pad)

was used per composite template and one 3 inch by 2-inch 12 ply 100% cotton gauze pad (aka gauze pad) was used per discrete template.

Bio Clean Inc CDL supervisor prepped all gauze pads in the following manner. A clean barrier was placed on top of the workstation. Vials were counted out and placed on top of the barrier. The gauze pads were counted out and placed into each vial to ensure only the amount needed was taken in for sampling. A disposable pipette was used to dampen the gauze pad(s) w/Reagent Grade Methanol. Screw lids were placed on each vial, labeled and placed inside a Ziploc baggie. A Blank (a vial containing 4 -2" X 2" -12 ply 100% cotton gauze pad(s) was also included for each unit and roof. This was done for QAQC.

The Ziploc bag also included a trash bag (used for barrier & consumables), labeled templates, clean booties, vinyl gloves and painters' tape.

Composite samples and discrete samples were taken from designated areas. Only the templates, tape, gloves, trash bag and prepped vials were taken into the property. Templates were taped to the designated surfaces in each unit. Clean vinyl gloves were donned. The dampened gauze pad(s) was removed from the vial and was grasped between the finger and thumb. The gauze pad was placed on the surface to be sampled. Using firm pressure, the surface to be sampled was wiped in a horizontal pattern being sure to overlap the "Z" pattern, wiping the entire surface.

The cotton gauze pad was lifted off the area in a scoop like manner. The gauze pad was opened, and the sampled side was folded inward. The clean section of the gauze pad was placed on the surface to be sampled and wiped vertically within the template area overlapping "N" pattern being sure to cover the entire area to be sampled. The gauze pad was lifted off the sampled area using an uplift scooping motion. After the surface within the individual template was wiped; the gauze pad was folded in half to ensure the sampled area was folded inward. The folded gauze pad was placed into a clean approved plastic vial w/ screw lids from the analytical lab. This process was repeated until each of the six units were sampled. Once the sampling event was completed, the samples were placed into the Ziploc baggie, properly packaged and delivered to Analytical Chemistry Inc via USPS.

Micro-vacuum samples were taken by using an Allegro High-Volume Sampling Pump. Samples were taken by using an individual (disposable) template per sample. Each template used was a 10cm x 10cm for discrete samples.

Bio Clean Inc CDL supervisor prepped the sampling equipment prior to arriving at the location. A clean barrier was placed on top of the workstation, the sampling cassettes, labeled templets, 13-gallon trash bag (used for barrier & consumables), clean booties, vinyl gloves and painter's tape were placed into a Ziploc bag. A Blank cassette was also included. This was done for QAQC.

Discrete samples were taken at the property. Only the templates, tape, gloves, 13-gallon trash bag, sampling pump and cassettes were taken into the property. Templates were taped to various areas of the carpet. Clean vinyl gloves were donned, a barrier was placed near the taped template for the pump to be placed on. The cap was

removed from the cassette and attached to the tubing of the pump, the cassette was opened, and the pump was turned on. Using firm pressure, the surface to be sampled was vacuumed in a horizontal pattern being sure to overlap the "Z" pattern, vacuuming the entire surface. The pump was then turned off, the cassette was closed off, and removed from the tube, and the cap was placed back on the cassette. The above method was repeated for each sample.

Identification of analytical lab: Analytical Chemistry Inc 4611 S 134th Pl. Suite 200 Tukwila, WA 98168 Contact is Mia Saizon; 206-622-8353

IV. Decontamination and Cleanup

Bio Clean Inc employees conducted decontamination in the following manner:

Decontamination of employees and tools: Employee and tool decontamination stations were segregated by using two deep shuffle pans with and soapy water, brushes and terry towels. A third one was filled with clean water for rinsing. Each shuffle pan was labeled. The decontamination station included an eyewash station and hand wash station and was placed near the front door. This is where employees decontaminated themselves including tools and equipment.

We used a variety of hand tools to remove the above said materials. We used brushes, absorbent pads, and a hot steamer/extractor for washing, rinsing and absorbing. All wastewater was extracted and drained into the sewer system.

All eradication and cleanup were completed under negative air, using a negative air machine ("NAM"). All remaining surfaces were HEPA vacuumed following cleanup and again prior to post sampling. The client representative provided water and power to Bio Clean for cleanup purposes.

Main Lab

Hood #1: Using third hand poles, poly, and duct tape containment was built around hood #1. A zipper was placed in the poly for egress/ingress in the containment. Any remaining items in the hood vent were disposed by placing into black trash bags, then double bagged outside of the containment area for disposal. Any equipment in the hood vent area was washed with the hood vent. The hood vent area was pre-HEPA vacuumed, then using soft bristle brushes and disposable terry towels the hood vent interior/exterior was washed three times. Each wash was followed by a rinse using clean water. The wash water was extracted, and pH sampled to ensure the wash water is neutral (between 5 & 9) prior to disposing of into the drain. If the pH of the wash water is lower than a 5, we added sodium carbonate to neutralize the water.

DECONTAMINATION PROCEDURES

Continued

If the pH was higher than a 9, we added vinegar to neutralize the wash water (photo documentation will be included in the final). The hood vent was left to dry for a 48-hour period, and then the hood vent was post-HEPA vacuumed, with a final detail cleaning before the post sampling.

Main #307

Using third hand poles, poly, and duct tape containment was built around the walls. A zipper was placed in the poly for egress/ingress in the containment. Any remaining personal items were disposed by placing into black trash bags, then double bagged outside of the containment area for disposal. The metal bookshelf was disposed as well as, any remaining books left on it. All drop ceiling tiles were removed and disposed, to include vent covers and light bulbs. The fluorescent bulbs were removed from the light fixtures and disposed at the proper facility. The remaining ceiling tracks were washed three times. Each wash was followed by a rinse using clean water. The wash water was extracted, and pH sampled to ensure the wash water is neutral (between 5 & 9) prior to disposing of into the drain. If the pH of the wash water was lower than a 5, we added sodium carbonate to neutralize the water. If the pH was higher than a 9, we added vinegar to neutralize the wash water.

The ductwork in affected area was cleaned by certified HVAC Duct cleaner – the ductwork was air cleaned with compressed air using a powered soft bristled brush on flexible ductwork. HVAC unit was sealed off from the vacuum with pads and/or inflatable balloons to protect hearers and coils.

Vestibule/Hallway: The tile floors were left in place and washed three times. Each wash was followed by a rinse using clean water. The wash water was extracted, and pH sampled to ensure the wash water is neutral (between 5 & 9) prior to disposing of into the drain. If the pH of the wash water was lower than a 5, we added sodium carbonate to neutralize the water. If the pH was higher than a 9, we added vinegar to neutralize the wash water.

Doors: The doors were left in place and washed three times. Each wash was followed by a rinse using clean water. The wash water was extracted, and pH sampled to ensure the wash water is neutral (between 5 & 9) prior to disposing of into the drain. If the pH of the wash water was lower than a 5, we added sodium carbonate to neutralize the water. If the pH was higher than a 9, we added vinegar to neutralize the wash water.

Hazardous Waste: All hazardous waste was collected, sorted, packaged with like materials, loaded into BCI trucks, and hauled to MRW Facility in Snohomish County (see waste disposal section)

V. Waste Disposal

Identification of all the Waste Disposal Facilities used on this project:

All eradicated materials, debris, garbage, any remaining personal items consumable materials from eradication and decontamination was removed by Bio Clean Inc Technicians (BCIT), hauled and loaded into Bio Clean, Inc's truck, hauled and disposed of as solid waste

Wastewater was disposed of into the sewer system via the drains. All wash water was sampled for pH prior to disposal, to assure that it is in the "safe" range of 5 – 9.

Identification of Waste Disposal Facility:

Hauler: Bio Clean, Inc

Solid Waste

Disposal Site: South Transfer Station

Name: Seattle Public Utilities

Address: 130 S. Kenyon St, Seattle, WA 98108

Phone Number: 206-684-8400

Hauler: Bio Clean Inc

Hazardous Waste

Disposal Site: Disposal of Toxins (Snohomish County)

Name: MRW Facility Hazardous Waste

Address: 3434 McDougal Ave Everett, WA 98201

Phone Number: (425) 388-6050 Wed - Fri 9:00 am - 4:00 pm

VI. Results

A. Chemical Analysis

Pre-Sample/Pre-Cleanup Sampling Results Includes Chain of Custody Receipt, Analytical Lab Results, Photos, Pre-Sample Map & Table - **Attachment #3**

Post- Cleanup Sampling Results: Includes Chain of Custody Receipt, Analytical Lab Results & Photos - **Attachment #3**

B. Decontamination and Cleanup

On **May 18, 2020**, analytical results arrived finding all samples from the areas sampled were below the Washington State Decontamination Standard of 1.5 μg methamphetamine per 100 cm^2 . (**Analytical results, chain of custody, and photos- Attachment #3**).

Final Photo Documentation including cleanup pictures: **Attachment #4**

If you have any questions regarding this report, please call me at 425-377-2303.

Sincerely,



Lisa Martinez
Project Manager
Bio Clean Inc.
Supervisor DOH CDL Certification # and Expiration Date
S077-17R November 30, 2021

ATTACHMENT #2
PRE ASSESSMENT PHOTOS







ATTACHMENT #3
ANALYTICAL RESULTS

ATTACHMENT #1
CDL CERTIFICATE

CDL Decontamination Contractor Certificate

This is to certify that

Bio Clean Inc.

has successfully completed the

Washington State Department of Health

requirements for

Clandestine Drug Lab Decontamination Contractor

Certification expires on January 7, 2021

Certification Number 7


Glen Patrick, Program Registrar

December 13, 2019
Date

Analytical Results

Bio Clean Inc
 Post-Sample Table
 May 12, 2020

Sample Number & Location (Surface)	Discrete Yes/No	Composite # Samples	Analyte	Area Sampled	Post Decon-Result $\mu\text{g}/100\text{ cm}^2$
Hall					
Sample P- 22	Yes	1 sample 1 area	Meth	Floor at west end	1.1
Sample P-23	Yes	1 sample 1 area	Meth	Floor at east end	0.92
Vestibule					
Sample P-24	Yes	1 sample 1 area	Meth	Floor in vestibule	0.73
Sample P-25	Yes	1 sample 1 area	Meth	Door inside vestibule	0.047
Chem #307					
Sample P-26	Yes	1 sample 1 area	Meth	Door to vestibule (from 307 side)	0.083
Sample P-27	Yes	1 sample 1 area	Meth	Cold air return in sup office including track	0.076
Sample P-28	Yes	1 sample 1 area	Meth	Ceiling vent east including track	0.14
Sample P-29	Yes	1 sample 1 area	Meth	Light in cove area	<0.030
Sample P-30	Yes	1 sample 1 area	Meth	Cold air return near window	0.044
Sample P-31	Yes	1 sample 1 area	Meth	Light northside near window	<0.030
Sample P-32	Yes	1 sample 1 area	Meth	Ceiling track west side	0.052

** <0.030 = non-detect

Analytical Results

Sample Number & Location (Surface)	Discrete Yes/No	Composite # Samples	Analyte	Area Sampled	Post Decon-Result <small>µg/100 cm²</small>
Chem #307					
Sample P-33	Yes	1 sample 1 area	Meth	Ceiling vent near entry	0.046
Sample P-34	Yes	1 sample 1 area	Meth	Ceiling track east side	0.049
Sample P-35 QAQC	Yes	1 sample	Meth	Blank	<0.030

** <0.030 = non-detect



ANALYTICAL CHEMISTRY INC.

Established in 1979

4611 S 134TH PL STE 200
TUKWILA WA 98168-3240

Phone: 206-622-8353

E-mail: info@acilabs.com
Website: www.acilabs.com

Lab Reference:	20126-09B
Date Received:	May 14, 2020
Date Completed:	May 18, 2020

May 18, 2020

THERESA BORST
BIO CLEAN INC
P O BOX 655
LAKE STEVENS WA 98258

CLIENT REF: WSP, Seattle

SAMPLES: wipes/14

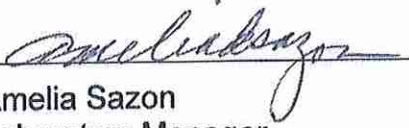
ANALYSIS: Methamphetamine per modified NIOSH 9109 & EPA 8270 by GC-MS.

RESULTS: in micrograms per 100 square centimeters (ug/100 cm²)

Sample Label	Sample Area square centimeters	Methamphetamine		% Surrogate Recovery
		micrograms	ug/100 cm ²	
P22	100	1.09	1.1	101
P23	100	0.924	0.92	113
P24	100	0.731	0.73	104
P25	100	0.047	0.047	109
P26	100	0.083	0.083	115
P27	100	0.076	0.076	115
P28	100	0.144	0.14	113
P29	100	< 0.030	< 0.030	111
P30	100	0.044	0.044	109
P31	100	< 0.030	< 0.030	112
P32	100	0.052	0.052	115
P33	100	0.046	0.046	110
P34	100	0.049	0.049	111
P35	100	< 0.030	< 0.030	111

QA/QC Method Blank	< 0.004
QC 0.100 ug Standard	0.100
QA 0.020 ug Matrix Spike	0.021
QA 0.020 ug Matrix Spike Duplicate	0.023
Method Detection Limit (MDL)	0.004
Reporting Limit (RL)	0.030

'<': less than, not detected
above the RL


Amelia Sazon
Laboratory Manager

Confidentiality Policy: This report is intended solely for the information and use of the above-named addressee. Evaluation and/or interpretation of the results is not within our authority. We will not comment, discuss, or release any part of this report, or any

BIO CLEAN INC

SAMPLE CUSTODY FORM

4801 56th PINE
 MARYSVILLE WA 98270

Phone: 425-377-2303
 E-mail: Tborst@BioCleanWA.com

SAMPLING DATE:		May 12, 2020		LABORATORY INFORMATION			ANALYSIS REQUESTED		
PROJECT Name/No:		WSP		ANALYTICAL CHEMISTRY INC. 4611 S 134TH PL, STE 200 TUKWILA WA 98168 206-622-8353 aci@acilabs.com			1 Methamphetamine		
SITE ADDRESS:		Seattle					2		
SAMPLER NAME:		Lisa Martinez					3		
LAB Number (only)	Sample Number	SAMPLE DESCRIPTION (optional)	TOTAL AREA cm ²	SAMPLE MATRIX Wipe (✓)	Other (vacuum, soil)	ANALYSIS (please check ✓)			LAB COMMENTS & VERIFICATION (all rows below for lab only)
P22-P35	P22-P35		100	X		1	2	3	14
SAMPLER COMMENTS									
CHAIN OF CUSTODY RECORD									
PRINT NAME	SIGNATURE	COMPANY	DATE	Solvent Used:	TIME	Please call for RUSH TAT availability. All samples must be received by 3 pm.			Total No. of Containers (verified by laboratory only)
Lisa Martinez	<i>[Signature]</i>	Bio Clean Inc	5/12/2020	<input checked="" type="checkbox"/> Methanol <input type="checkbox"/> Isopropanol	4:00pm	<input type="checkbox"/> DI Water <input type="checkbox"/> None	<input checked="" type="checkbox"/> Ambient <input type="checkbox"/> Cooled <input type="checkbox"/> Gauze	<input checked="" type="checkbox"/> Plastic Vials <input type="checkbox"/> Glass Vials <input type="checkbox"/> Other (plastic baggies)	14
Scott Kerkowder	<i>[Signature]</i>	ACT	5/14/20		12:50	<input type="checkbox"/> End of next day (2X) <input type="checkbox"/> 2 days (1.5X) <input checked="" type="checkbox"/> 3-5 days (Routine)	<input type="checkbox"/> Filter Paper <input checked="" type="checkbox"/> Inspected By	<input type="checkbox"/> Custody Sealed	<i>[Signature]</i>

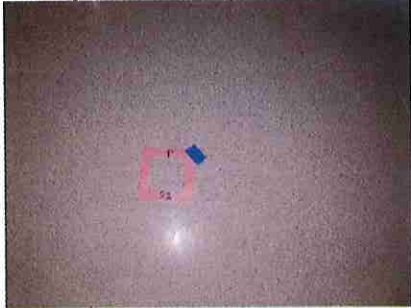
Analysis Generated by: A:\www\of-Forms\Acid\Ode\Kerlow\9826-098.rpt

Revision 1.02 1/2013

Analytical Results

Photo Documentation

Sample P22



Sample P23



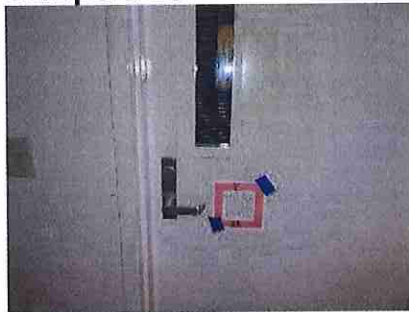
Sample P24



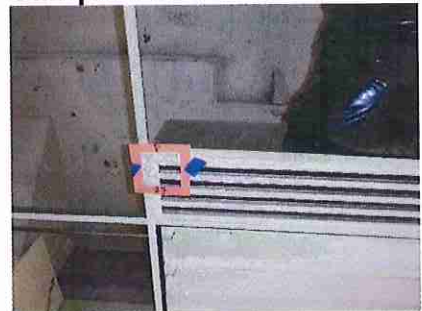
Sample P25



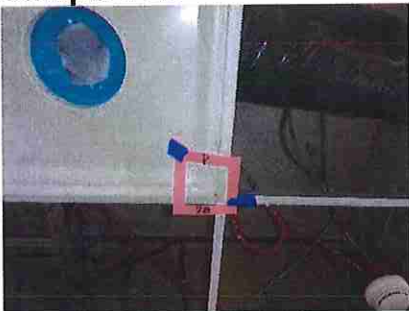
Sample P26



Sample P27



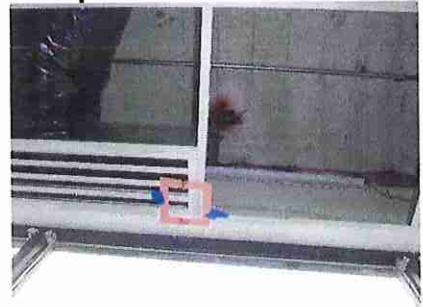
Sample P28



Sample P29



Sample P30



Analytical Results

Sample P31



Sample P32



Sample P33



Sample P34



Sample P35

QAQC – No Photo Documentation

Analytical Results

Bio Clean Inc
 Post-Sample Table
 April 28, 2020

Sample Number & Location (Surface)	Discrete Yes/No	Composite # Samples	Analyte	Area Sampled	Post Decon-Result $\mu\text{g}/100\text{ cm}^2$
Chem Office 307					
Sample P-1 QAQC	Yes	1 sample 1 area	Meth	Blank	<0.030
Sample P- 2	Yes	1 sample 1 area	Meth	Ceiling vent near entry	0.096
Sample P-3	Yes	1 sample 1 area	Meth	Cold air return near window	0.069
Sample P-4	Yes	1 sample 1 area	Meth	Light fixture southeast side including track	<0.030
Sample P-5	Yes	1 sample 1 area	Meth	Light fixture southside	<0.030
Sample P-6	Yes	1 sample 1 area	Meth	Ceiling vent east including track	0.10
Sample P-7	Yes	1 sample 1 area	Meth	Cold air return in sup office including track	0.090
Sample P-8	Yes	1 sample 1 area	Meth	Light fixture in hall including track	0.038
Sample P-9	Yes	1 sample 1 area	Meth	South wall main area	<0.030
Sample P-10	Yes	1 sample 1 area	Meth	North wall in Sup office	<0.030
Sample P-11	Yes	1 sample 1 area	Meth	East wall (south area)	<0.030
Sample P-12	Yes	1 sample 1 area	Meth	West wall near entry	<0.030

** <0.030 = non-detect

Analytical Results

Sample Number & Location (Surface)	Discrete Yes/No	Composite # Samples	Analyte	Area Sampled	Post Decon-Result $\mu\text{g}/100\text{ cm}^2$
Vestibule					
Sample P-13	Yes	1 sample 1 area	Meth	Floor in front of cabinet	0.58
Sample P-14	Yes	1 sample 1 area	Meth	Door inside vestibule	0.074
Sample P-15	Yes	1 sample 1 area	Meth	Wall above sink in vestibule	<0.030
Sample P-16	Yes	1 sample 1 area	Meth	Vestibule door	0.080
Hood #1					
Sample P-17	Yes	1 sample 1 area	Meth	Vent above in fume area (Hood #1)	<0.030
Sample P-18	Yes	1 sample 1 area	Meth	Inside hood #1	<0.030
Hall Area					
Sample P-19	Yes	1 sample 1 area	Meth	Floor northeast end	0.48
Sample P-20	Yes	1 sample 1 area	Meth	Floor southwest end	1.6
Sample P-21	Yes	1 sample 1 area	Meth	Door east end of hall	<0.030
Sample P-22	Yes	1 sample 1 area	Meth	Door west end of hall	<0.030

** <0.030 = non-detect

Analytical Results



ANALYTICAL CHEMISTRY INC.

4611 S 134TH PL. STE 200
TUKWILA WA 98168-3240

Established in 1979

E-mail: aci@acilabs.com

Lab Reference:	20126-09, page 1 of 2
Date Received:	April 28, 2020
Date Completed:	April 30, 2020

April 30, 2020

THERESA BORST
BIO CLEAN INC
P O BOX 655
LAKE STEVENS WA 98258

CLIENT REF: WSP, Seattle

SAMPLES: wipes/22

ANALYSIS: Methamphetamine per modified NIOSH 9109 & EPA 8270 by GC-MS.

RESULTS: in micrograms per 100 square centimeters (ug/100 cm²)

Sample Label	Sample Area square centimeters	Methamphetamine		% Surrogate Recovery
		micrograms	ug/100 cm ²	
P1	100	< 0.030	< 0.030	104
P2	100	0.096	0.096	114
P3	100	0.069	0.069	128
P4	100	< 0.030	< 0.030	135
P5	100	< 0.030	< 0.030	105
P6	100	0.102	0.10	101
P7	100	0.090	0.090	94
P8	100	0.038	0.038	119
P9	100	< 0.030	< 0.030	96
P10	100	< 0.030	< 0.030	106
P11	100	< 0.030	< 0.030	96
P12	100	< 0.030	< 0.030	131
P13	100	0.577	0.58	100
P14	100	0.074	0.074	97
P15	100	< 0.030	< 0.030	114

Analytical Results



ANALYTICAL CHEMISTRY INC.

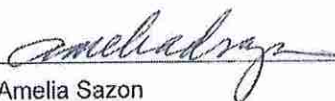
Established in 1979

Lab Reference:	20126-09, page 2 of 2
WSP, Seattle	April 28, 2020

RESULTS: in micrograms per 100 square centimeters (ug/100 cm²)

Sample Label	Sample Area square centimeters	Methamphetamine		% Surrogate Recovery
		micrograms	ug/100 cm ²	
P16	100	0.080	0.080	107
P17	100	< 0.030	< 0.030	105
P18	100	< 0.030	< 0.030	101
P19	100	0.486	0.48	79
P20	100	1.62	1.6	96
P21	100	< 0.030	< 0.030	129
P22	100	< 0.030	< 0.030	115
QA/QC Method Blank		0.005		
QC 0.100 ug Standard		0.092		
QA 0.020 ug Matrix Spike		0.024		
QA 0.020 ug Matrix Spike Duplicate		0.020		
Method Detection Limit (MDL)		0.004		
Reporting Limit (RL)		0.030		

'<': less than, not detected above the RL


Amelia Sazon
Laboratory Manager

Confidentiality Policy: This report is intended solely for the information and use of the above-named addressee. Evaluation and/or interpretation of the results is not within our authority. We will not comment, discuss, or release any part of this report, or any

Analytical Results

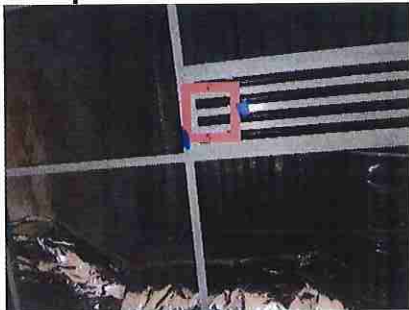
Photo Documentation

Sample P1
QAQC – No Photo Documentation

Sample P2



Sample P3



Sample P4



Sample P5



Sample P6



Sample P7



Sample P8



Sample P9



Sample P10



Analytical Results

Sample P11



Sample P12



Sample P13



Sample P14



Sample P15



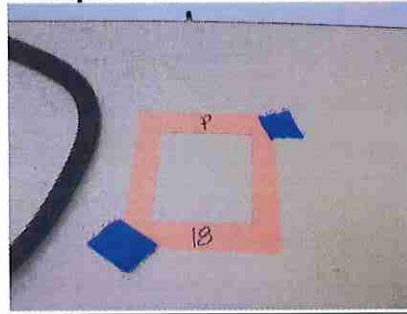
Sample P16



Sample P17



Sample P18



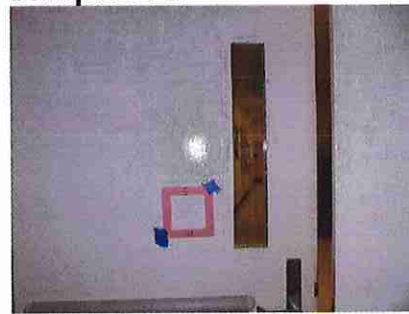
Sample P19



Sample P20



Sample P21



Sample P22



Analytical Results

Bio Clean Inc
Pre-Sample Table, February 6, 2020

Sample Number & Location (Surface)	Discrete Yes/No	Composite # Samples	Analyte	Area Sampled	Pre Decon-Result $\mu\text{g}/100 \text{ cm}^2$
Chem Office 307					
Sample WSP-61 QAQC	Yes	1 sample 1 area	Meth	Blank	<0.030
Sample WSP-62	Yes	1 sample 1 area	Meth	Carpet sample in front of entry door	0.44
Sample WSP-63	Yes	1 sample 1 area	Meth	Carpet sample centrally located	0.18
Sample WSP-64	Yes	1 sample 1 area	Meth	Carpet sample in front of vestibule entry	1.8
Sample WSP-65	Yes	1 sample 1 area	Meth	Carpet sample in supervisor office	57

** <0.030 = non-detect

Analytical Results



ANALYTICAL CHEMISTRY INC.

4611 N 234TH PL. STE 200
 YURWILA WA 98168-3240

Established in 1979

E-mail: ac@acilabs.com

Lab Reference:	20110-07
Date Received:	February 7, 2020
Date Completed:	February 11, 2020

February 11, 2020

THERESA BORST
 BIO CLEAN INC
 P O BOX 855
 LAKE STEVENS WA 98258

CLIENT REF: WSP, Seattle

SAMPLES: wipes/5

ANALYSIS: Methamphetamine per modified NIOSH 9109 & EPA 8270 by GC-MS.

RESULTS: in micrograms per 100 square centimeters (ug/100 cm²)

Sample Label	Sample Area square centimeters	Methamphetamine		% Surrogate Recovery
		total micrograms	ug/100 cm ²	
WSP 61	100	< 0.030	< 0.030	115
WSP 62	100	0.436	0.44	116
WSP 63	100	0.175	0.18	94
WSP 64	100	1.79	1.8	104
WSP 65	100	58.9	57	95
QA/QC Method Blank		< 0.004		
QC 0.100 ug Standard		0.100		
QA 0.020 ug Matrix Spike		0.023		
QA 0.020 ug Matrix Spike Duplicate		0.022		
Method Detection Limit (MDL)		0.004		
Reporting Limit (RL)		0.030		

<: less than, not detected above the RL


 Amelia Sazon
 Laboratory Manager

Confidentiality Policy: This report is intended solely for the information and use of the above-named addressee. Evaluation and/or interpretation of the results is not within our authority. We will not comment, discuss, or release any part of this report, or any related information to a third party.

Analytical Results

BIO CLEAN INC

SAMPLE CUSTODY FORM

4801 56th PI NE
 MARYSVILLE WA 98270
 Phone: 425-377-2303
 E-mail: Tborst@BioCleanWA.com

Page 1 of 1

SAMPLING DATE: <u>Feb. 6, 2020</u> PROJECT Name/No: <u>WSP</u> SITE ADDRESS: <u>Seattle</u> SAMPLER NAME: <u>Lisa Martinez</u>		LABORATORY INFORMATION ANALYTICAL CHEMISTRY INC. 4614 S 134TH PL, STE 200 TUKWILA WA 98155 206-622-8353 acl@acllabs.com		ANALYSIS REQUESTED 1 Methamphetamine 2 3	
LAB Number (only) <u>SP-55</u>	Sample Number <u>WSP01-05</u>	SAMPLE DESCRIPTION (optional)	TOTAL AREA cm ² 100	SAMPLE MATRIX Wipe (✓) Other ()	ANALYSIS (please check) 1 2 3 X X
CHAIN OF CUSTODY RECORD		Total No. of Containers (verified by laboratory only) <u>5</u>			
PRINT NAME <u>Lisa Martinez</u>	SIGNATURE <i>[Signature]</i>	COMPANY <u>Bio Clean Inc</u>	DATE <u>2/6/2020</u>	TIME <u>2:30pm</u>	Solvent Used: <input type="checkbox"/> Methanol <input type="checkbox"/> Acetone <input type="checkbox"/> DI Water <input type="checkbox"/> None
SOH/Kidney <i>[Signature]</i>	PuffBlak	AD	2/3/20	1505	Please call for RUSH TAT availability. All samples must be received by 3 pm. <input type="checkbox"/> End of next day (24) <input type="checkbox"/> 2 days (150) <input checked="" type="checkbox"/> 3-5 days (Preferred)
SAMPLER COMMENTS		Lab No. of Containers (verified by laboratory only) <u>5</u> <input checked="" type="checkbox"/> Ampoules <input type="checkbox"/> Plastic Vials <input type="checkbox"/> Cooled <input type="checkbox"/> Glass Vials <input type="checkbox"/> Gauze <input checked="" type="checkbox"/> Other () <input type="checkbox"/> Free-Flow <input type="checkbox"/> Custody Sealed Inspected By: <u>SHL</u> Lab File No. <u>20110-07</u>			

Analytical Results

PHOTO DOCUMENTATION OF THE SAMPLING EVENT

Sample WSP-61 QAQC



BLANK for quality assurance and quality control

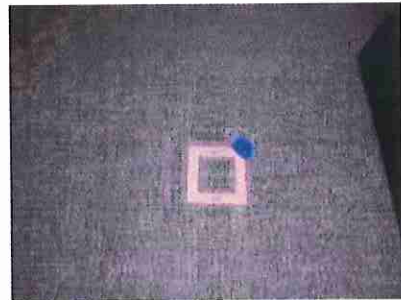
Sample WSP-62



Sample WSP-63



Sample WSP-64



Sample WSP -65



End of Report

Analytical Results

Bio Clean Inc
Pre-Sample Table, November 20, 2019

Sample Number & Location (Surface)	Discrete Yes/No	Composite # Samples	Analyte	Area Sampled	Pre Decon-Result $\mu\text{g}/100\text{ cm}^2$
EXAM RM 307					
Sample WSP-19 West wall	Yes	1 sample 1 area	Meth	West Wall above desk	<0.030
Sample WSP-20 Southwest wall	Yes	1 sample 1 area	Meth	Corner of wall	<0.030
Sample WSP-21 North wall	Yes	1 sample 1 area	Meth	North wall above desk	<0.030
Sample WSP-22 East Wall	Yes	1 sample 1 area	Meth	East wall left of desk	<0.030
Sample WSP-23 South wall (alcove)	Yes	1 sample 1 area	Meth	South wall in between desks	<0.030
Sample WSP-24 East wall	Yes	1 sample 1 area	Meth	East wall right of Sup office window	<0.030
Sample WSP-25 North wall	Yes	1 sample 1 area	Meth	North wall in hall outside of Sup office	<0.030
Sample WSP-26 East wall	Yes	1 sample 1 area	Meth	East wall in vestibule	<0.030
Sample WSP-27 Chair back (alcove)	Yes	1 sample 1 area	Meth	Back of chair	<0.030
Sample WSP-28 Chair arm	Yes	1 sample 1 area	Meth	Arm of Chair	<0.030
Sample WSP-29 Chair leg	Yes	1 sample 1 area	Meth	Chair leg	<0.030
Sample WSP-30 Chair arm	Yes	1 sample 1 area	Meth	Arm of chair	<0.030

Analytical Results

Sample Number & Location (Surface)	Discrete Yes/No	Composite # Samples	Analyte	Area Sampled	Pre Decon-Result $\mu\text{g}/100\text{ cm}^2$
CHEM OFF 307 CONTINUED					
Sample WSP-31 Chair arm	Yes	1 sample 1 area	Meth	Arm of Chair	<0.030
Sample WSP-32 Ceiling Tile	Yes	1 sample 1 area	Meth	Fram of ceiling tile near entry to 307	0.33
Sample WSP-33 Ceiling Light	Yes	1 sample 1 area	Meth	South light fixture	0.075
Sample WSP-34 Ceiling Light	Yes	1 sample 1 area	Meth	Northwest light fixture	0.031
Sample WSP-35 Ceiling Light	Yes	1 sample 1 area	Meth	Light fixture – hall outside of Sup office	0.037
Sample WSP-36 Ceiling Light	Yes	1 sample 1 area	Meth	Southeast light fixture - alcove	0.059
Sample WSP-37 Ceiling Vent (Sup office)	Yes	1 sample 1 area	Meth	Ceiling vent in Sup office	0.39
Sample WSP-38 Ceiling Cold Air (Sup office)	Yes	1 sample 1 area	Meth	Cold air return in Sup office	1.8
Sample WSP-39 Ceiling Vent (Vestibule)	Yes	1 sample 1 area	Meth	Ceiling vent in vestibule	0.11
Sample WSP-40 Ceiling Vent	Yes	1 sample 1 area	Meth	Ceiling vent return northeast	0.32
Sample WSP-41 Vent Deflector	Yes	1 sample 1 area	Meth	Ceiling vent deflector above desk	<0.030
Sample WSP-42 Ceiling Vent	No	1 composite 4 areas	Meth	Ceiling vent return northwest	0.46
Sample WSP-43 Personal Item	Yes	1 sample 1 area	Meth	Personal item on cubicle wall	<0.030

Analytical Results

Sample Number & Location (Surface)	Discrete Yes/No	Composite # Samples	Analyte	Area Sampled	Pre Decon-Result $\mu\text{g}/100\text{ cm}^2$
CHEM OFF 307 CONTINUED					
Sample WSP-44 Personal Item	Yes	1 sample 1 area	Meth	Personal item on desk – red binder	<0.030
Sample WSP-45 Inside Drawer	Yes	1 sample 1 area	Meth	Inside desk drawer	<0.030
Sample WSP-46 Personal Item	Yes	1 sample 1 area	Meth	Personal item – white board	0.059
Sample WSP-47 Personal Item	Yes	1 sample 1 area	Meth	Personal Item – purple book	<0.030
Sample WSP-48 Bookshelf	Yes	1 sample 1 area	Meth	Bookshelf	1.3
Sample WSP-49 Personal Item	Yes	1 sample 1 area	Meth	Personal Item – POP Box	<0.030
Sample WSP-50 Personal Item	Yes	1 sample 1 area	Meth	Personal Item – Barcode label printer	<0.030
Sample WSP-51 Personal Item (alcove)	Yes	1 sample 1 area	Meth	Personal item – plaque on wall	<0.030
Sample WSP-52 Inside Drawer (alcove)	Yes	1 sample 1 area	Meth	Inside desk drawer	<0.030
Sample WSP-53 Personal Item	Yes	1 sample 1 area	Meth	Northeast desk – Personal Item – Pen holder	<0.030
Sample WSP-54 Personal Item	Yes	1 sample 1 area	Meth	Personal Item – File folder rack on desk	<0.030
Sample WSP-55 Floor (Vestibule)	Yes	1 sample 1 area	Meth	Floor in vestibule	2.6

Analytical Results

CHEM OFF 305					
Sample WSP-56 Floor	Yes	1 sample 1 area	Meth	Floor in Room 305	3.2
Sample WSP-57 Door to Vestibule	Yes	1 sample 1 area	Meth	Door to vestibule	1.1
CHEM OFF 302					
Sample WSP-58 Floor	Yes	1 sample 1 area	Meth	Floor in hall of Room 302	4.0
Sample WSP-59 Door in Hallway	Yes	1 sample 1 area	Meth	Door to hall – Room 302	0.12
Sample WSP-60 QAQC	Yes	1 sample 1 area	Meth	Blank	<0.030

** <0.030 = non-detect

Analytical Results

Analytical Results



ANALYTICAL CHEMISTRY INC.

4611 S 134TH PL STE 200
TUKWILA WA 98168-3240

Established in 1979

E-mail: aci@acilabs.com

Lab Reference:	19183-01, page 1 of 2
Date Received:	November 21, 2019
Date Completed:	November 25, 2019

November 25, 2019

THERESA BORST
BIO CLEAN INC
P O BOX 655
LAKE STEVENS WA 98258

CLIENT REF: WSP, Seattle

SAMPLES: wipes/42

ANALYSIS: Methamphetamine per modified NIOSH 9109 & EPA 8270 by GC-MS.

RESULTS: in micrograms per 100 square centimeters (ug/100 cm²)

Sample Label	Sample Area square centimeters	Methamphetamine		% Surrogate Recovery
		total micrograms	ug/100 cm²	
WSP 19	100	< 0.030	< 0.030	100
WSP 20	100	< 0.030	< 0.030	107
WSP 21	100	< 0.030	< 0.030	97
WSP 22	100	< 0.030	< 0.030	114
WSP 23	100	< 0.030	< 0.030	98
WSP 24	100	< 0.030	< 0.030	90
WSP 25	100	< 0.030	< 0.030	106
WSP 26	100	< 0.030	< 0.030	105
WSP 27	100	< 0.030	< 0.030	89
WSP 28	100	< 0.030	< 0.030	81
WSP 29	100	< 0.030	< 0.030	74
WSP 30	100	< 0.030	< 0.030	92
WSP 31	100	< 0.030	< 0.030	103
WSP 32	100	0.332	0.33	97
WSP 33	100	0.075	0.075	86
WSP 34	100	0.031	0.031	124
WSP 35	100	0.037	0.037	84
WSP 36	100	0.059	0.059	90
WSP 37	100	0.391	0.39	108

Analytical Results



ANALYTICAL CHEMISTRY INC.

4611 S 134TH PL STE 200
TUKWILA WA 98168-3240

Established in 1979

E-mail: aci@acilabs.com

Lab Reference:	19183-01, page 2 of 2
WSP, Seattle	November 21, 2019

RESULTS: in micrograms per 100 square centimeters (ug/100 cm²)

Sample Label	Sample Area square centimeters	Methamphetamine		% Surrogate Recovery
		total micrograms	ug/100 cm ²	
WSP 38	100	1.81	1.8	113
WSP 39	100	0.112	0.11	107
WSP 40	100	0.324	0.32	104
WSP 41	100	< 0.030	< 0.030	108
WSP 42	100	0.460	0.46	128
WSP 43	100	< 0.030	< 0.030	104
WSP 44	100	< 0.030	< 0.030	100
WSP 45	100	< 0.030	< 0.030	86
WSP 46	100	0.059	0.059	99
WSP 47	100	< 0.030	< 0.030	92
WSP 48	100	1.32	1.3	99
WSP 49	100	< 0.030	< 0.030	93
WSP 50	100	< 0.030	< 0.030	105
WSP 51	100	< 0.030	< 0.030	96
WSP 52	100	< 0.030	< 0.030	93
WSP 53	100	< 0.030	< 0.030	89
WSP 54	100	< 0.030	< 0.030	90
WSP 55	100	2.61	2.6	92
WSP 56	100	3.25	3.2	95
WSP 57	100	1.06	1.1	93
WSP 58	100	4.00	4.0	97
WSP 59	100	0.123	0.12	95
WSP 60	100	< 0.030	< 0.030	101
QA/QC Method Blank		< 0.004	<: less than, not detected above the RL	
QC 0.100 ug Standard		0.098		
QA 0.020 ug Matrix Spike		0.020		
QA 0.020 ug Matrix Spike Duplicate		0.019		
Method Detection Limit (MDL)		0.004		
Reporting Limit (RL)		0.030		


Amelia Sazon
Laboratory Manager

Analytical Results

BIO CLEAN INC

SAMPLE CUSTODY FORM

4801 56th PI NE
 MARYSVILLE WA 98270
 Phone: 425-377-2303
 E-mail: T.Borst@BioCleanWA.com

Page 1 of 1

SAMPLING DATE: NOV 20, 2019		LABORATORY INFORMATION		ANALYSIS REQUESTED				
PROJECT Name/No: WSP		ANALYTICAL CHEMISTRY INC. 4611 S 134TH PL, STE 200 TUKWILA WA 98168 206-622-8353 aci@acilabs.com		1 Methamphetamine				
SITE ADDRESS: Seattle				2				
SAMPLER NAME: Lisa Martinez				3				
LAB Number (only)	Sample Number	SAMPLE DESCRIPTION (optional)	TOTAL AREA cm ²	Wipe (✓)	ANALYSIS (please check ✓)			LAB COMMENTS & VERIFICATION (all rows below for lab only)
					Other (vacuum seal)	1	2	
W19-60	WSP19-60		100	X			X	42
SAMPLER COMMENTS								
CHAIN OF CUSTODY RECORD								
PRINT NAME	SIGNATURE	COMPANY	DATE	Solvent Used:	<input type="checkbox"/> Methanol <input type="checkbox"/> Isopropanol	<input type="checkbox"/> DI Water <input type="checkbox"/> None	Please call for RUSH TAT availability. All samples must be received by 3 pm.	
Lisa Martinez	<i>[Signature]</i>	Bio Clean Inc	11/20/19				<input checked="" type="checkbox"/> Ambient <input type="checkbox"/> Cooled <input checked="" type="checkbox"/> Gauze <input type="checkbox"/> Filter Paper <input type="checkbox"/> Other (plastic baggies)	<input checked="" type="checkbox"/> Plastic Vials <input type="checkbox"/> Glass Vials <input type="checkbox"/> Custody Sealed
Eyda May	<i>[Signature]</i>	ACI	11/21/19	1130			<input type="checkbox"/> End of next day (2X) <input type="checkbox"/> 2 days (1.5X) <input checked="" type="checkbox"/> 3-5 days (Routine)	Inspected By: <i>[Signature]</i> Lab File No. 19183-01
Total No. of Containers (verified by laboratory only) 42								

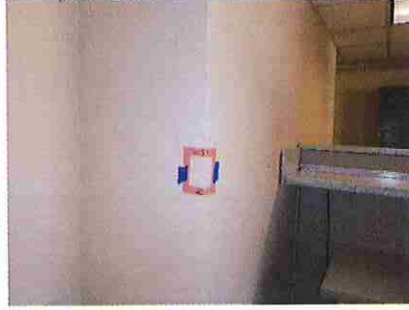
Analytical Results

PHOTO DOCUMENTATION OF THE SAMPLING EVENT

Sample WSP-19



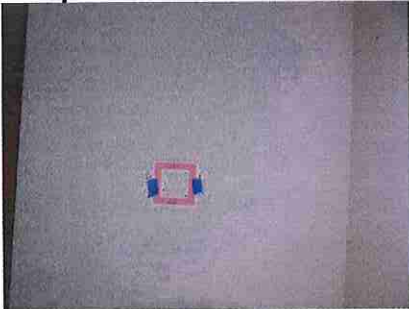
Sample WSP-20



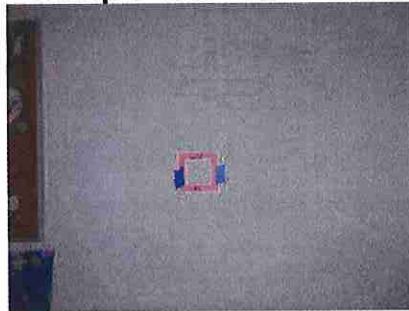
Sample WSP-21



Sample WSP-22



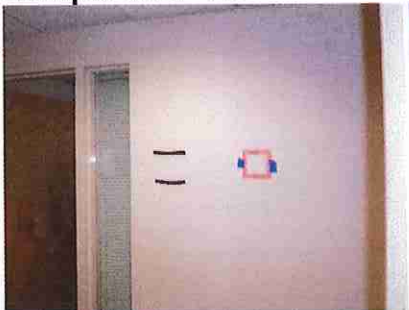
Sample WSP -23



Sample WSP-24



Sample WSP-25



Sample WSP-26



Sample WSP-27



Analytical Results

Sample WSP-28



Sample WSP-29



Sample WSP-30



Sample WSP-31



Sample WSP-32



Sample WSP-33



Sample WSP-34



Sample WSP-35

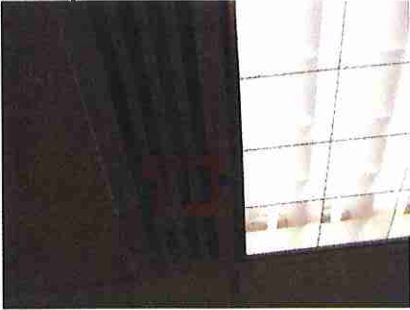


Sample WSP-36



Analytical Results

Sample WSP-37



Sample WSP-38



Sample WSP-39



Sample WSP-40



Sample WSP-41



Sample WSP-42



Sample WSP-43



Sample WSP-44



Sample WSP-45



Analytical Results

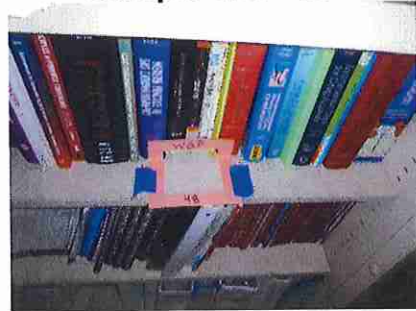
Sample WSP-46



Sample WSP-47



Sample WSP-48



Sample WSP-49



Sample WSP-50



Sample WSP-51



Sample WSP-52



Sample WSP-53



Sample WSP-54



Analytical Results

Sample WSP-55



Sample WSP-56



Sample WSP-57



Sample WSP-58



Sample WSP-59



Sample WSP-60 QAQC



BLANK for quality assurance and quality control

Analytical Results

Bio Clean Inc
Pre-Sample Table, June 19, 2019

Sample Number & Location (Surface)	Discrete Yes/No	Composite # Samples	Analyte	Area Sampled	Pre Decon-Result µg/100 cm ²
EXAM RM 325					
Sample WSP-1 QAQC	Yes	1 sample 1 area	Meth	Blank	<0.030
Sample WSP-2	Yes	1 sample 1 area	Meth	Vent above in fume area	1.4
Sample WSP-3	Yes	1 sample 1 area	Meth	Wall near door including light switch	0.087
Sample WSP-4	Yes	1 sample 1 area	Meth	Top of desk area	<0.030
Sample WSP-5	Yes	1 sample 1 area	Meth	Floor	52
Sample WSP-6	Yes	1 sample 1 area	Meth	Ceiling fan	0.032
EXAM RM 326					
Sample WSP-7	Yes	1 sample 1 area	Meth	Wall near door including light switch	<0.030
EXAM RM 328					
Sample WSP-8	Yes	1 sample 1 area	Meth	Ledge in fume area	0.057
Sample WSP-9	Yes	1 sample 1 area	Meth	Countertop	<0.030
CHEM OFF 307					
Sample WSP-10	Yes	1 sample 1 area	Meth	Phone keypad on desk	0.48
Sample WSP-11	Yes	1 sample 1 area	Meth	Drawer face of desk	1.1
Sample WSP-12	Yes	1 sample 1 area	Meth	Desktop near keyboard	<0.030
Sample WSP-13	Yes	1 sample 1 area	Meth	Desktop near keyboard	<0.030
Sample WSP-14	Yes	1 sample 1 area	Meth	Desktop	<0.030
Sample WSP-15	Yes	1 sample 1 area	Meth	Keyboard on desk	<0.030

Analytical Results

Sample Number & Location (Surface)	Discrete Yes/No	Composite # Samples	Analyte	Area Sampled	Pre Decon-Result μg/100 cm ²
CHEM OFF 307 CONTINUED					
Sample WSP-16	Yes	1 sample 1 area	Meth	Keyboard on desk	<0.030
Sample WSP-17	Yes	1 sample 1 area	Meth	Keyboard on desk	0.076
Sample WSP-18	Yes	1 sample 1 area	Meth	Ceiling vent	0.25
TOX OFFICE 345					
Sample WSP-19	Yes	1 sample 1 area	Meth	Keyboard on desk	<0.030
Sample WSP-20	Yes	1 sample 1 area	Meth	Keyboard on desk	<0.030
Sample WSP-21	Yes	1 sample 1 area	Meth	Keyboard on desk	<0.030
Sample WSP-22	Yes	1 sample 1 area	Meth	Keyboard on desk	<0.030
Sample WSP-23	Yes	1 sample 1 area	Meth	Keyboard on desk	<0.030
Sample WSP-24	No	1 composite 4 areas	Meth	Keyboard on desk	<0.030
Sample WSP-25	Yes	1 sample 1 area	Meth	Keyboard on desk	<0.030
Sample WSP-26	Yes	1 sample 1 area	Meth	Keyboard on desk	<0.030
Sample WSP-27	Yes	1 sample 1 area	Meth	Keyboard on desk	<0.030
MAIN LAB					
Sample WSP-28	Yes	1 sample 1 area	Meth	Vent above in fume area (Hood #1)	0.049
Sample WSP-29	Yes	1 sample 1 area	Meth	Back wall inside fume area	<0.030
Sample WSP-30	Yes	1 sample 1 area	Meth	Countertop	<0.030
Sample WSP-31	Yes	1 sample 1 area	Meth	Back wall inside fume area (Hood #2)	<0.030
Sample WSP-32	Yes	1 sample 1 area	Meth	Ledge in fume area (Hood #3)	<0.030
Sample WSP-33	Yes	1 sample 1 area	Meth	Countertop	<0.030
Sample WSP-34	Yes	1 sample 1 area	Meth	Ledge in fume area (Hood #4)	<0.030

Analytical Results

Sample Number & Location (Surface)	Discrete Yes/No	Composite # Samples	Analyte	Area Sampled	Pre Decon-Result μg/100 cm ²
MAIN LAB CONTINUED					
Sample WSP-35	Yes	1 sample 1 area	Meth	Ledge in fume area (Hood #5)	<0.030
Sample WSP-36	Yes	1 sample 1 area	Meth	Countertop	<0.030
Sample WSP-37	Yes	1 sample 1 area	Meth	Ledge in fume area (Hood #6)	<0.030
Sample WSP-38	Yes	1 sample 1 area	Meth	Ledge in fume area (Hood #7)	<0.030
Sample WSP-39	Yes	1 sample 1 area	Meth	Countertop	<0.030
Sample WSP-40	Yes	1 sample 1 area	Meth	Ledge in fume area (Hood #8)	<0.030
Sample WSP-41	Yes	1 sample 1 area	Meth	Ledge in fume area (Hood #9)	<0.030
Sample WSP-42	Yes	1 sample 1 area	Meth	Countertop	<0.030
Sample WSP-43	Yes	1 sample 1 area	Meth	Ledge in fume area (Hood #10)	<0.030
Sample WSP-44	Yes	1 sample 1 area	Meth	Countertop	<0.030
Sample WSP-45	Yes	1 sample 1 area	Meth	Ledge in fume area (Hood #11)	<0.030
Sample WSP-46	Yes	1 sample 1 area	Meth	Countertop	<0.030
SUP OFFICE					
Sample WSP-47	Yes	1 sample 1 area	Meth	Keyboard on desk	<0.030
Sample WSP-48	Yes	1 sample 1 area	Meth	Keyboard on desk	<0.030

** <0.030 = non-detect

Analytical Results

Sample Number & Location (Surface)	Discrete Yes/No	Composite # Samples	Analyte	Area Sampled	Pre Decon-Result µg/100 cm ²
CHEM OFF 307					
Sample WSP-10	Yes	1 sample 1 area	Heroin	Phone keypad on desk	<0.050
Sample WSP-11	Yes	1 sample 1 area	Heroin	Drawer face of desk	<0.050
Sample WSP-17	Yes	1 sample 1 area	Heroin	Keyboard on desk	<0.050

** <0.030 = non-detect

Sample Number & Location (Surface)	Discrete Yes/No	Composite # Samples	Analyte	Area Sampled	Pre Decon-Result µg/100 cm ²
CHEM OFF 307					
Sample WSP-10	Yes	1 sample 1 area	Cocaine	Phone keypad on desk	0.45
Sample WSP-11	Yes	1 sample 1 area	Cocaine	Drawer face of desk	0.43
Sample WSP-17	Yes	1 sample 1 area	Cocaine	Keyboard on desk	0.12

** <0.030 = non-detect

Analytical Results



ANALYTICAL CHEMISTRY INC.

4611 S 134TH PL. STE 200
TUKWILA WA 98168-3240

Established in 1979

E-mail: aci@acilabs.com

Lab Reference:	19142-04, page 1 of 2
Date Received:	June 20, 2019
Date Completed:	June 24, 2019

June 24, 2019

THERESA BORST
BIO CLEAN INC
P O BOX 655
LAKE STEVENS WA 98258

CLIENT REF: WSP, Seattle

SAMPLES: wipes/48

ANALYSIS: Methamphetamine per modified NIOSH 9109 & EPA 8270 by GC-MS.

RESULTS: in micrograms per 100 square centimeters (ug/100 cm²)

Sample Label	Sample Area square centimeters	Methamphetamine		% Surrogate Recovery
		total micrograms	ug/100 cm²	
WSP 1	100	< 0.030	< 0.030	99
WSP 2	100	1.35	1.4	114
WSP 3	100	0.087	0.087	102
WSP 4	100	< 0.030	< 0.030	95
WSP 5	100	52.4	52	111
WSP 6	100	0.032	0.032	104
WSP 7	100	< 0.030	< 0.030	98
WSP 8	100	0.057	0.057	94
WSP 9	100	< 0.030	< 0.030	96
WSP 10	100	0.484	0.48	94
WSP 11	100	1.14	1.1	108
WSP 12	100	< 0.030	< 0.030	97
WSP 13	100	< 0.030	< 0.030	100
WSP 14	100	< 0.030	< 0.030	111
WSP 15	100	< 0.030	< 0.030	119
WSP 16	100	< 0.030	< 0.030	86
WSP 17	100	0.076	0.076	108
WSP 18	100	0.254	0.25	107
WSP 19	100	< 0.030	< 0.030	106
WSP 20	100	< 0.030	< 0.030	103
WSP 21	100	< 0.030	< 0.030	105
WSP 22	100	< 0.030	< 0.030	104
WSP 23	100	< 0.030	< 0.030	92

Analytical Results



ANALYTICAL CHEMISTRY INC.

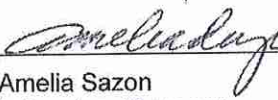
E-mail: aci@acilabs.com

Established in 1979

Lab Reference:	19142-04, page 2 of 2
WSP, Seattle	June 20, 2019

RESULTS: in micrograms per 100 square centimeters (ug/100 cm²)

Sample Label	Sample Area square centimeters	Methamphetamine		% Surrogate Recovery
		total micrograms	ug/100 cm ²	
WSP 24	100	< 0.030	< 0.030	100
WSP 25	100	< 0.030	< 0.030	109
WSP 26	100	< 0.030	< 0.030	99
WSP 27	100	< 0.030	< 0.030	103
WSP 28	100	0.049	0.049	95
WSP 29	100	< 0.030	< 0.030	98
WSP 30	100	< 0.030	< 0.030	99
WSP 31	100	< 0.030	< 0.030	94
WSP 32	100	< 0.030	< 0.030	95
WSP 33	100	< 0.030	< 0.030	83
WSP 34	100	< 0.030	< 0.030	97
WSP 35	100	< 0.030	< 0.030	97
WSP 36	100	< 0.030	< 0.030	120
WSP 37	100	< 0.030	< 0.030	111
WSP 38	100	< 0.030	< 0.030	106
WSP 39	100	< 0.030	< 0.030	97
WSP 40	100	< 0.030	< 0.030	99
WSP 41	100	< 0.030	< 0.030	100
WSP 42	100	< 0.030	< 0.030	111
WSP 43	100	< 0.030	< 0.030	104
WSP 44	100	< 0.030	< 0.030	106
WSP 45	100	< 0.030	< 0.030	102
WSP 46	100	< 0.030	< 0.030	93
WSP 47	100	< 0.030	< 0.030	101
WSP 48	100	< 0.030	< 0.030	107
QA/QC Method Blank		< 0.004	<: less than, not detected above the RL	
QC 0.100 ug Standard		0.114		
QA 0.020 ug Matrix Spike		0.021		
QA 0.020 ug Matrix Spike Duplicate		0.021		
Method Detection Limit (MDL)		0.004		
Reporting Limit (RL)		0.030		


 Amelia Sazon
 Laboratory Manager

Analytical Results

BIO CLEAN INC

SAMPLE CUSTODY FORM

4801 56th PINE
MARYSVILLE WA 98270

Phone: 425-377-2303
E-mail: TBoorst@BioCleanWA.com

Page 1 of 1

SAMPLING DATE:		June 19, 2019		LABORATORY INFORMATION			ANALYSIS REQUESTED		
PROJECT Name/No.:		WSP		ANALYTICAL CHEMISTRY INC. 4611 S 134TH PL, STE 200 TUKWILA WA 98168 206-622-8353 aci@acilabs.com			1 Methamphetamine		
SITE ADDRESS:		Seattle					2 Heroin		
SAMPLER NAME:		Lisa Martinez					3 Cocaine		
LAB Number (only)	Sample Number	SAMPLE DESCRIPTION (optional)	TOTAL AREA cm ²	SAMPLER MATRIX		ANALYSIS (please check ✓)			LAB COMMENTS & VERIFICATION (all rows below for lab only)
				Wipe (✓)	Other (vector, soil)	1	2	3	
W1-W48	WSP 1-48		100	X		X			48
(W10)	WSP 10		100	X		X	X		-
(W11)	WSP 11		100	X		X	X		-
(W17)	WSP 17		100	X		X	X		-
SAMPLER COMMENTS									
CHAIN OF CUSTODY RECORD				Solvent Used:		Total No. of Containers (verified by laboratory only)			
				<input checked="" type="checkbox"/> Methanol <input type="checkbox"/> Isopropanol		48			
PRINT NAME		SIGNATURE		COMPANY		DATE		TIME	
Lisa Martinez		<i>[Signature]</i>		Bio Clean Inc		6/19/2019		10:00 AM	
<i>[Signature]</i>		<i>[Signature]</i>		Bio Clean		6/20/2019		11:00 a	
<i>[Signature]</i>		<i>[Signature]</i>		ACI		6/20/19		11:52	
				<input checked="" type="checkbox"/> DI Water <input type="checkbox"/> None		<input checked="" type="checkbox"/> Ambient <input checked="" type="checkbox"/> Plastic Vials			
				<input type="checkbox"/> Cooled <input type="checkbox"/> Gauze		<input type="checkbox"/> Glass Vials <input type="checkbox"/> Other (plastic baggies)			
				<input type="checkbox"/> End of next day (2X) <input type="checkbox"/> 2 days (1.5X) <input checked="" type="checkbox"/> 3-5 days (Routine)		<input type="checkbox"/> Filler Paper <input type="checkbox"/> Custody Sealed			
				Please call for RUSH TAT availability. All samples must be received by 3 pm.		Inspected By: <i>[Signature]</i> Lab File No.: 19142-04			

Analytical Results



ANALYTICAL CHEMISTRY INC.

4611 S 134TH PL STE 200
TUKWILA WA 98168-3240

Established in 1979

E-mail: aci@acilabs.com

Lab Reference:	19142-04CH
Date Received:	June 20, 2019
Date Completed:	June 25, 2019

June 25, 2019

THERESA BORST
BIO CLEAN INC
P O BOX 655
LAKE STEVENS WA 98258

CLIENT REF: WSP, Seattle

SAMPLES: wipes/3

ANALYSIS: Cocaine and Heroin per modified NIOSH 9109 & EPA 8270 by Gas Chromatography-Mass Spectrometry.

RESULTS: in micrograms per 100 square centimeters (ug/100 cm²)

Sample Number	Sample Area square centimeters	Cocaine		Heroin		% Surrogate Recovery
		ug	ug/100 cm ²	ug	ug/100 cm ²	
WSP 10	100	0.451	0.45	< 0.050	< 0.050	93/87
WSP 11	100	0.427	0.43	< 0.050	< 0.050	101/88
WSP 17	100	0.115	0.12	< 0.050	< 0.050	104/96
QA/QC Method Blank		< 0.030		< 0.050		
QC ug Standard		0.100	0.103	0.100	0.091	
QA ug Matrix Spike		0.100	0.108	0.100	0.099	
QA ug Matrix Spike Duplicate		0.100	0.100	0.100	0.084	
Method Detection Limit (MDL)		0.004		0.030		
Reporting Limit (RL)		0.030		0.050		

<: less than, not detected above the RL

Amelia Sazon
Laboratory Manager

Analytical Results

BIO CLEAN INC

SAMPLE CUSTODY FORM

4801 56th PI NE
 MARYSVILLE WA 98270
 Phone: 425-377-2303
 E-mail: TBorst@BioCleanWA.com

Page 1 of 1

SAMPLING DATE:	June 19, 2019	LABORATORY INFORMATION	ANALYTICAL CHEMISTRY INC. 4611 S 134TH PL STE 200 TUKWILA WA 98188 206-622-8353 aci@acilabs.com		ANALYSIS REQUESTED	1 Methamphetamine
PROJECT Name/No:	WSP				2	Heroin
SITE ADDRESS:	Seattle				3	Cocaine
SAMPLER NAME:	Lisa Martinez					

LAB Number (only)	Sample Number	SAMPLE DESCRIPTION (optional)	TOTAL AREA cm ²	SAMPLE MATRIX		ANALYSIS (please check ✓)			LAB COMMENTS & VERIFICATION (fill rows below for lab only)
				Wipe (✓)	Other (vacuum, soil)	1	2	3	
W1-W48	WSP 1-48		100	X				X	48
(W10)	WSP 10		100	X				X	-
(W11)	WSP 11		100	X				X	-
(W17)	WSP 17		100	X				X	-

SAMPLER COMMENTS				CHAIN OF CUSTODY RECORD			
PRINT NAME	SIGNATURE	COMPANY	DATE	Solvent Used:	TIME	Please call for RUSH TAT availability. All samples must be received by 3 pm.	
Lisa Martinez	<i>[Signature]</i>	Bio Clean Inc	6/19/2019	<input checked="" type="checkbox"/> Methanol <input type="checkbox"/> Isopropanol	10:00 AM	<input type="checkbox"/> DI Water <input type="checkbox"/> None	<input checked="" type="checkbox"/> Ambient <input type="checkbox"/> Cooled <input type="checkbox"/> Gauze
<i>Galene Ward</i>	<i>Galene Ward</i>	Bio Clean	6/20/2019	<input type="checkbox"/> End of next day (2X) <input type="checkbox"/> 2 days (1.5X) <input checked="" type="checkbox"/> 3-5 days (Routine)	11:00 a	<input type="checkbox"/> Filler Paper <input type="checkbox"/> Inspected By	<input type="checkbox"/> Glass Vials <input type="checkbox"/> Other (plastic baggies) <input type="checkbox"/> Custody Sealed
<i>Soft Kicks</i>	<i>[Signature]</i>	AD	6/20/19		11:00 D	Lab File No.	19142-04
				Total No. of Containers (verified by laboratory only) 48			

Analytical Results

PHOTO DOCUMENTATION OF THE SAMPLING EVENT Sample WSP-1 QAQC

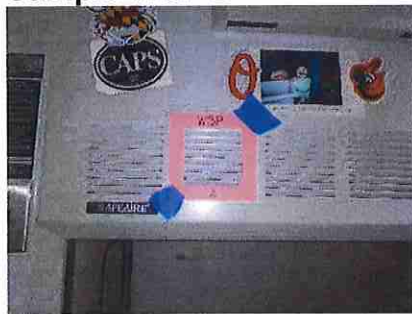


BLANK for quality assurance and quality control

EXAM ROOM 325



Sample WSP-2



Sample WSP-3



Sample WSP-4



Sample WSP -5



Sample WSP-6



Analytical Results

EXAM ROOM 326



Sample WSP-7



EXAM ROOM 328



Sample WSP-8

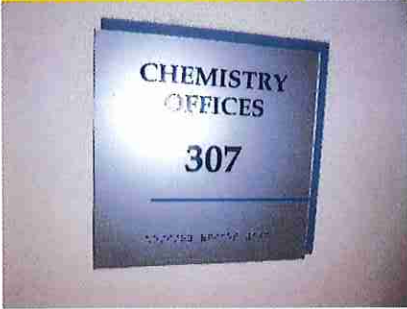


Sample WSP-9



Analytical Results

CHEM OFFICES 345



Sample WSP-10



Sample WSP-11



Sample WSP-12



Sample WSP-13



Sample WSP-14



Sample WSP-15



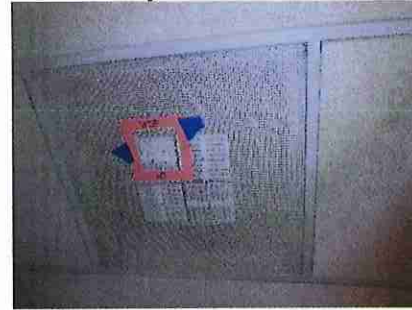
Sample WSP-16



Sample WSP-17



Sample WSP-18

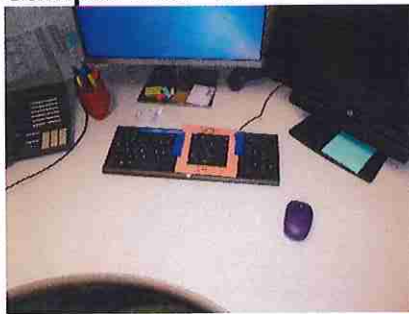


Analytical Results

TOX OFFICES 345



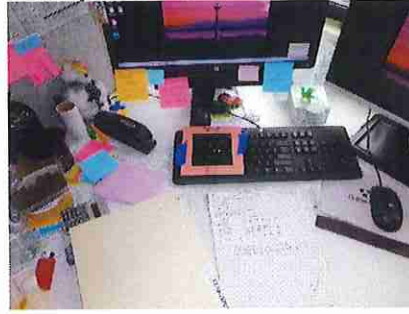
Sample WSP-19



Sample WSP-20



Sample WSP-21



Sample WSP-22



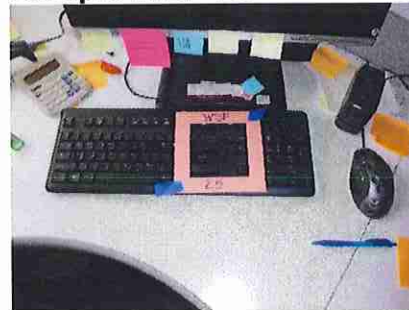
Sample WSP-23



Sample WSP-24



Sample WSP-25



Sample WSP-26

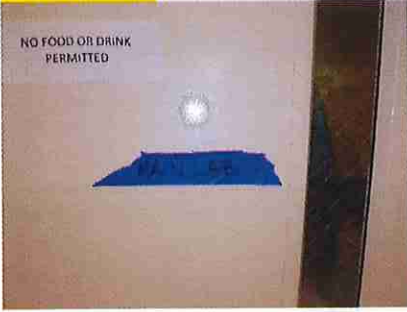


Sample WSP-27

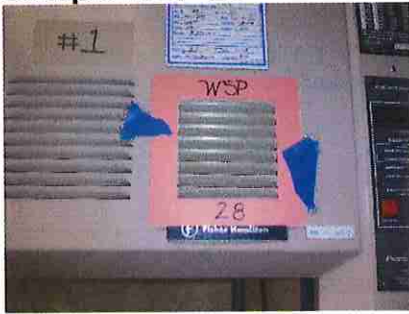


Analytical Results

MAIN LAB



Sample WSP-28



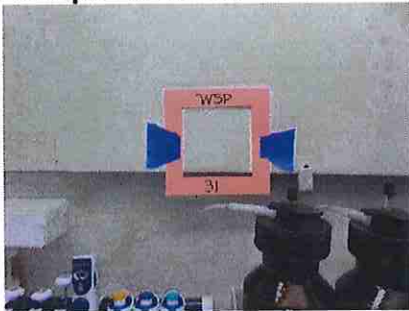
Sample WSP-29



Sample WSP-30



Sample WSP-31



Sample WSP-32



Sample WSP-33



Sample WSP-34



Sample WSP-35



Sample WSP-36

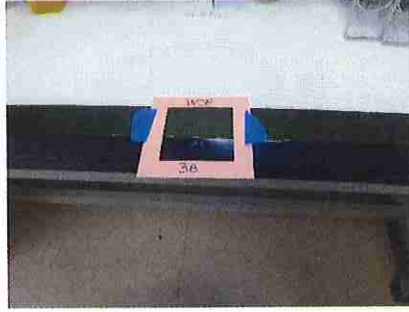


Analytical Results

Sample WSP-37



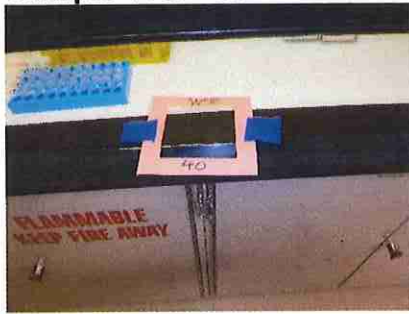
Sample WSP-38



Sample WSP-39



Sample WSP-40



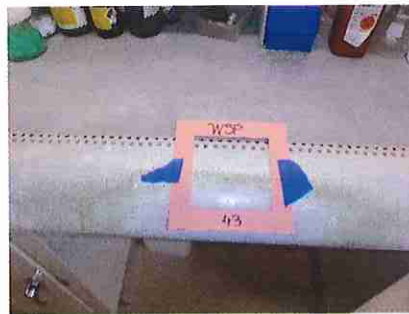
Sample WSP-41



Sample WSP-42



Sample WSP-43



Sample WSP-44



Sample WSP-45



Sample WSP-46



Analytical Results

SUPE OFFICES



Sample WSP-47



Sample WSP-48



End of Report

ATTACHMENT #4
FINAL PHOTOS

