

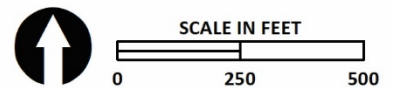
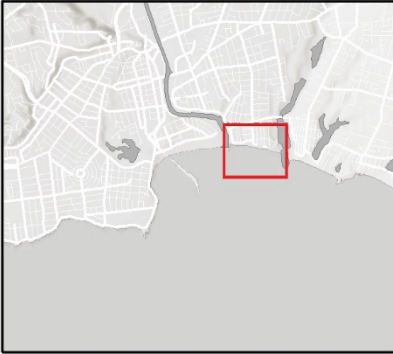


### Legend

- Coastal Access
- Coastal Armoring

#### Pathway Strategies

- 1a Living shoreline
- 1b Upgrade stormwater & manage trails
- 2 Raise jetty and beach nourishment
- 3 Managed retreat



Seabright Beach: Moratorium on New Armoring (Pathway 1)



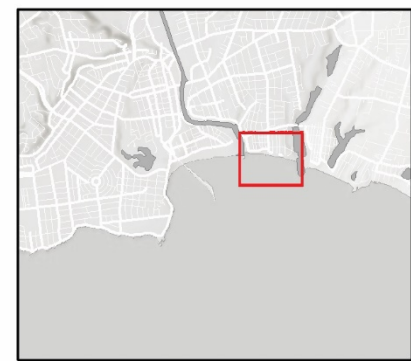


### Legend

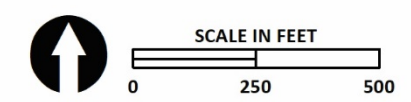
- Coastal Access
- Coastal Armoring

#### Pathway Strategies

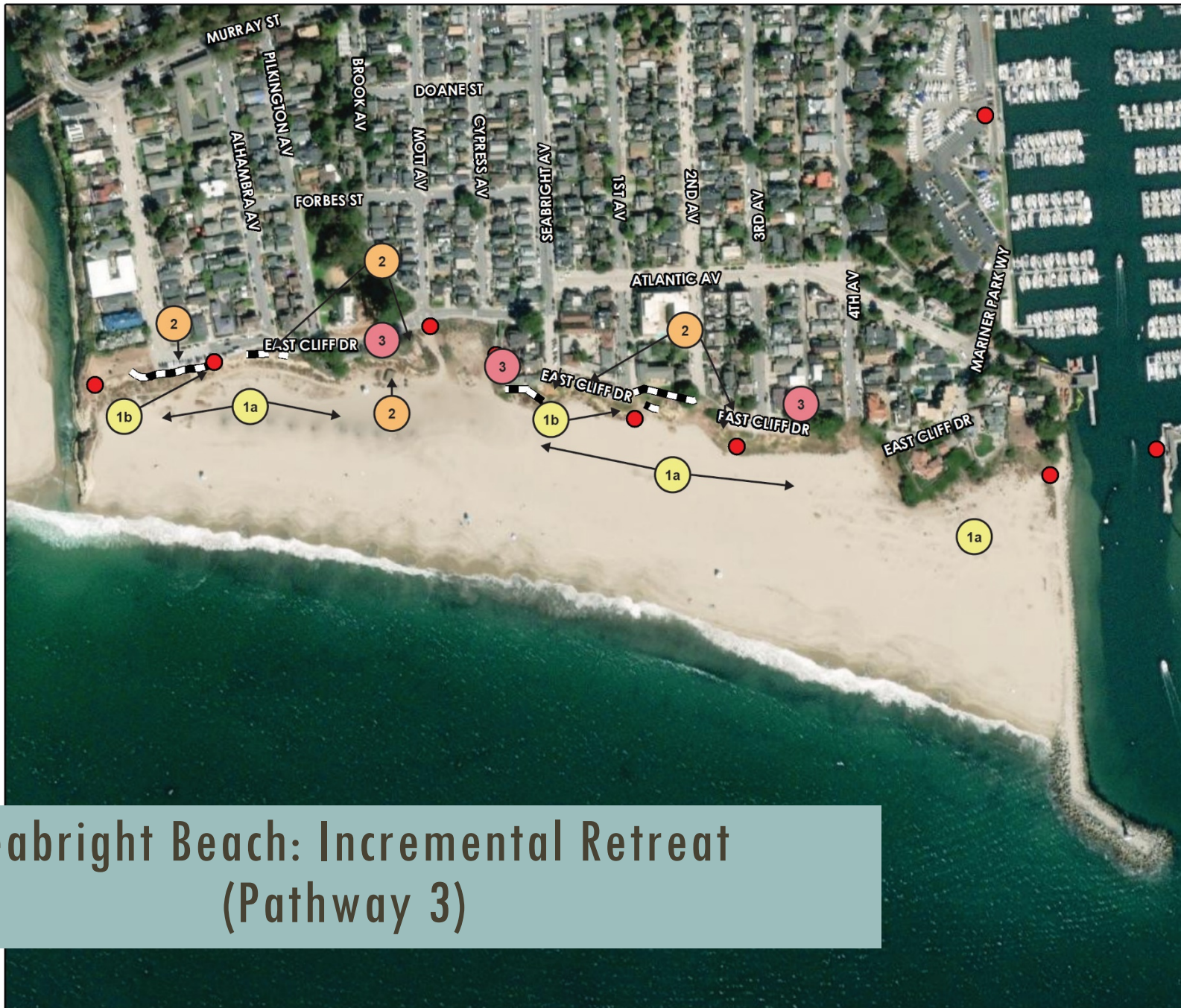
- 1a Living shoreline
- 1b Upgrade stormwater & manage trails
- 2 New or upgrade armoring
- 3 Raise jetty and beach nourishment



**Seabright Beach: Protect In Place  
(Pathway 2)**







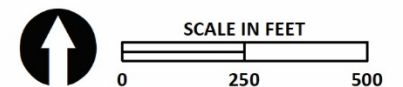
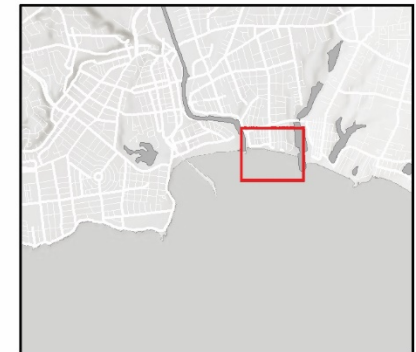
## Legend

● Coastal Access

▬ Coastal Armoring

### Pathway Strategies

- 1a Living shoreline
- 1b Upgrade stormwater & manage trails
- 2 Managed retreat of public infrastructure/property
- 3 Managed retreat of private property to retain public access



# Seabright Beach: Incremental Retreat (Pathway 3)



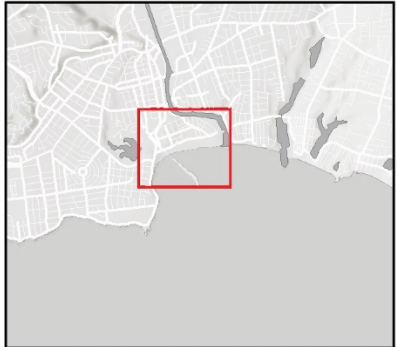


### Legend

- Coastal Access
- Coastal Armoring

Pathway Strategies

- 1a Living shoreline
- 1b Increase pump capacity
- 2 Raise curb wall
- 3a Accommodate/  
Increase resiliency
- 3b Managed retreat






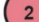
# Main & Cowell Beaches: Protect, Accommodate, Retreat (Pathway 2)



# Natural Bridges State Beach: Living Shoreline then Retreat



## Legend

-  Coastal Access
-  Coastal Armoring
- Pathway Strategies**
-  Living shoreline
-  Managed retreat/ Realignment

