

INITIAL DATA ON SPD ENFORCEMENT PATTERNS

Bob Scales

Seattle Police Department

May 14, 2014

5.140 – Bias-Free Policing

Effective Date: 01/30/2014

- **This policy requires periodic analysis of data which will assist in identification of SPD practices – including stops, citations and arrests – that may have a disparate impact on particular protected classes relative to the general population.**
- **When disparate impacts are identified, the Department will consult as appropriate with neighborhood, business and community groups, including the Community Police Commission, to explore equally effective alternative practices that would result in less disproportionate impact.**

Data Sources

- Seattle Municipal Court (MCIS)
 - Misdemeanor Cases
 - Infractions
- King County Jail
 - SPD Jail Bookings
- Seattle Police (CAD/RMS)
 - Officer Onviews

VIOLATIONS FILED WITH SEATTLE MUNICIPAL COURT

2004 to 2013

Data Requested

- Criminal (Misdemeanor & Gross Misdemeanor)
 - Traffic
 - Non-Traffic
- Civil Infractions
 - Traffic
 - Non-Traffic
- Excluded
 - Parking Violations
 - Speeding and Red Light Cameras

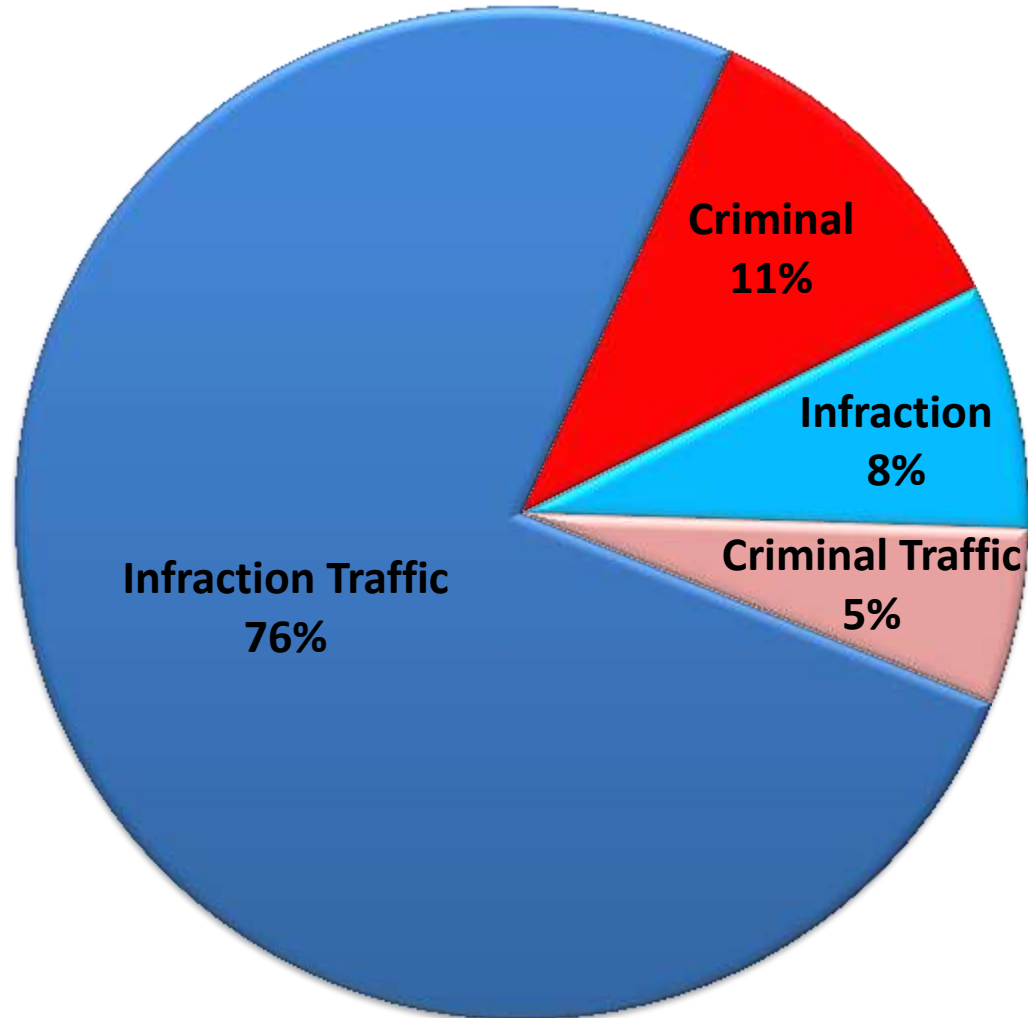
DATABASE

2004 - 2013

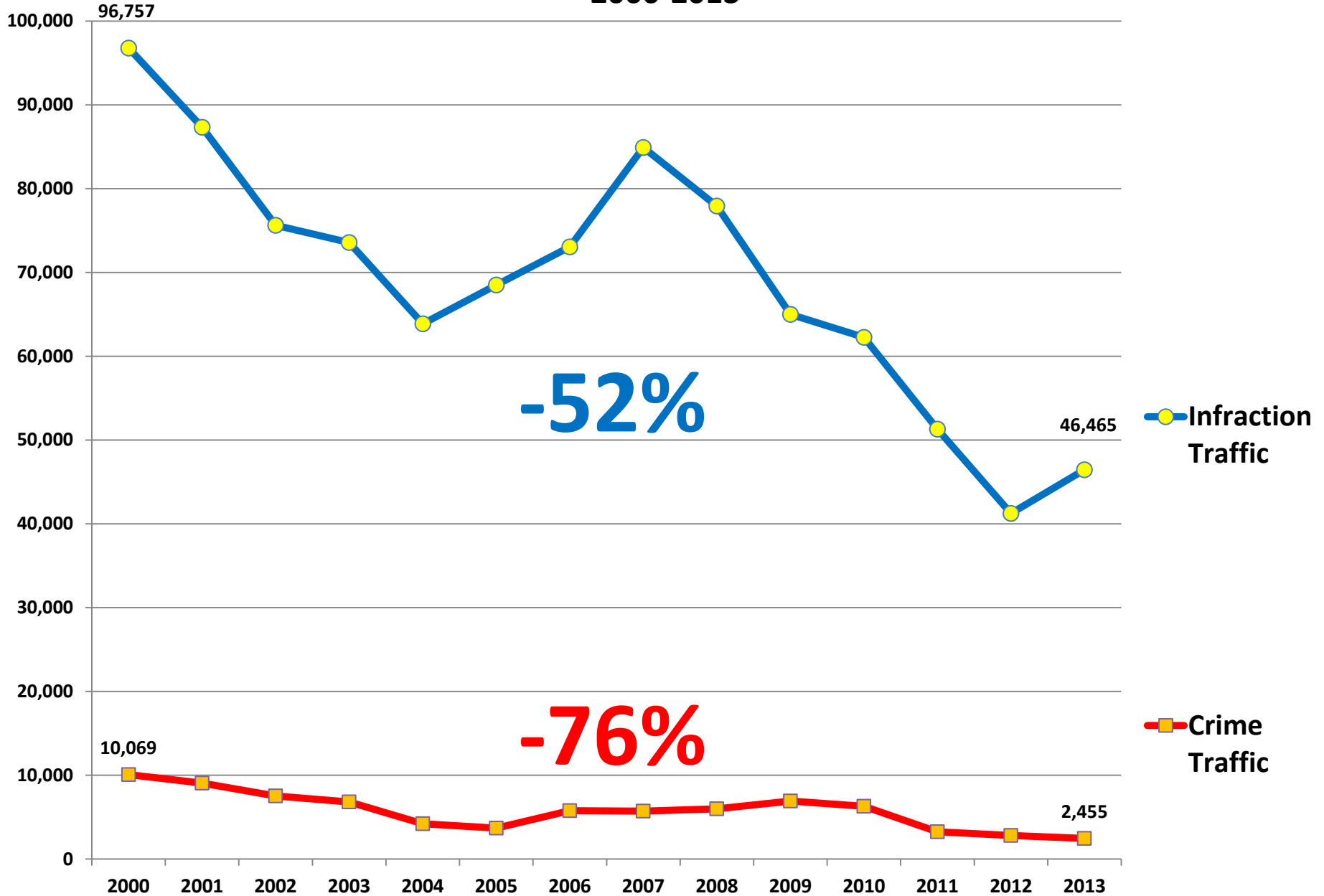
| Data Type | Number |
|----------------------|---------|
| Violations | 838,642 |
| Incidents | 634,487 |
| Individuals | 401,621 |
| SPD Officers | 2,225 |
| Types of Infractions | 472 |
| Types of Crimes | 297 |

Type of Violations

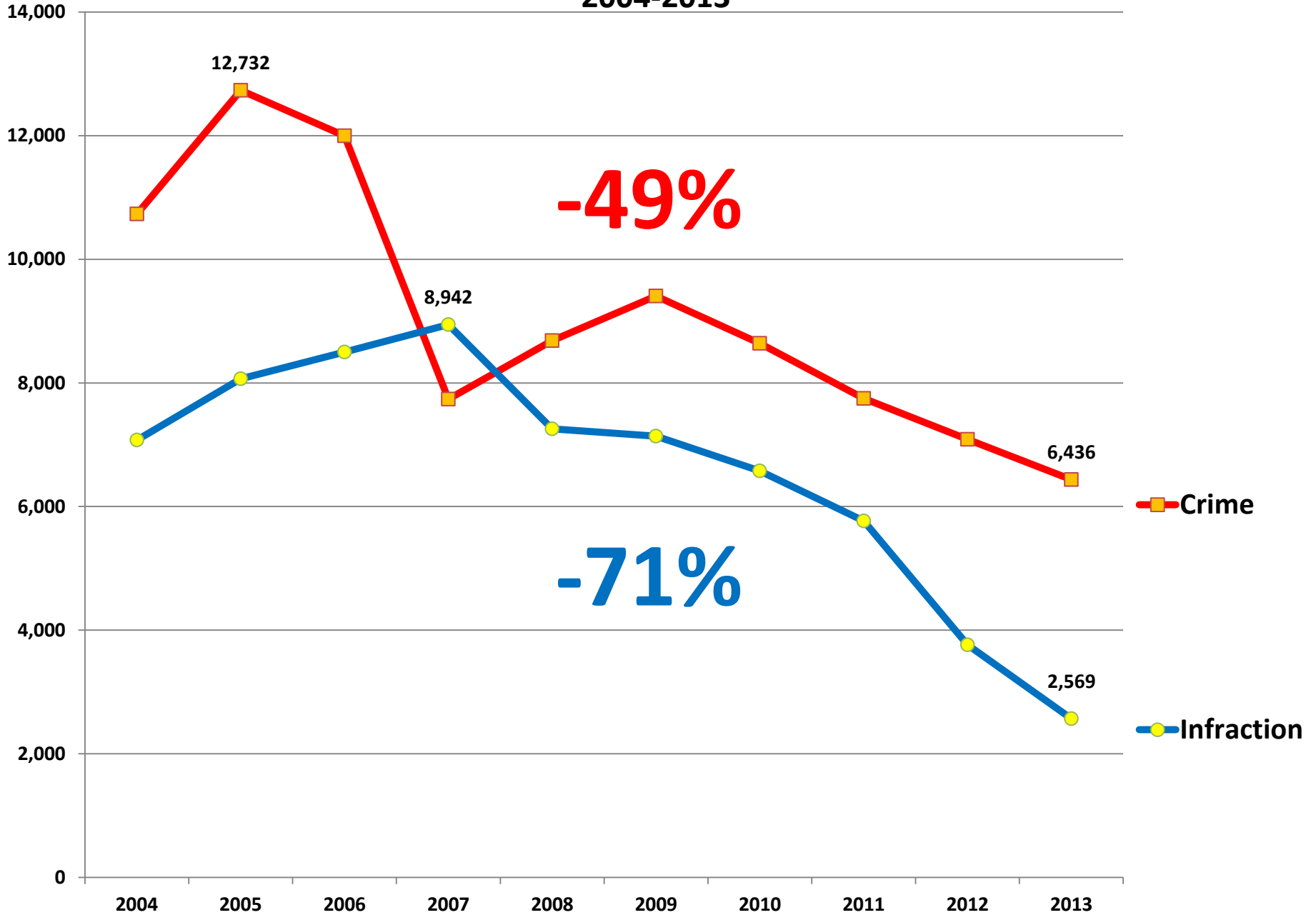
Total = 838,642



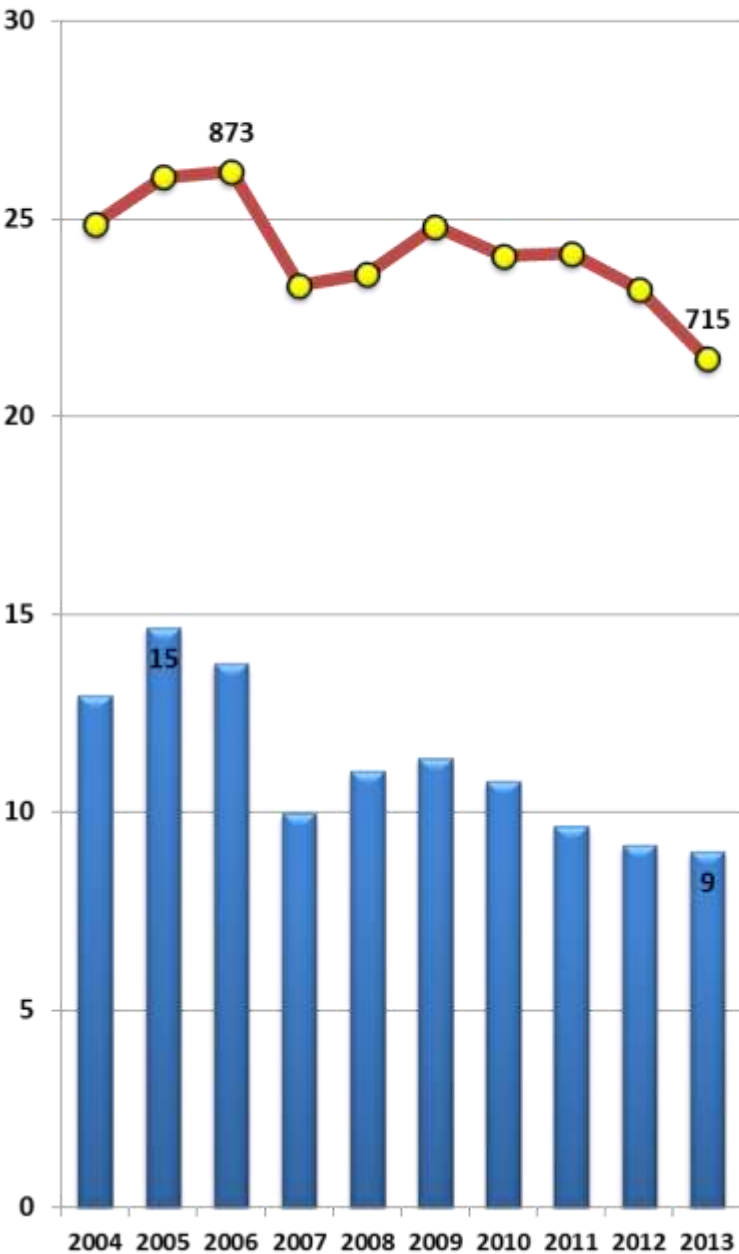
Total Number of Traffic Violations Filed in Seattle Municipal Court 2000-2013



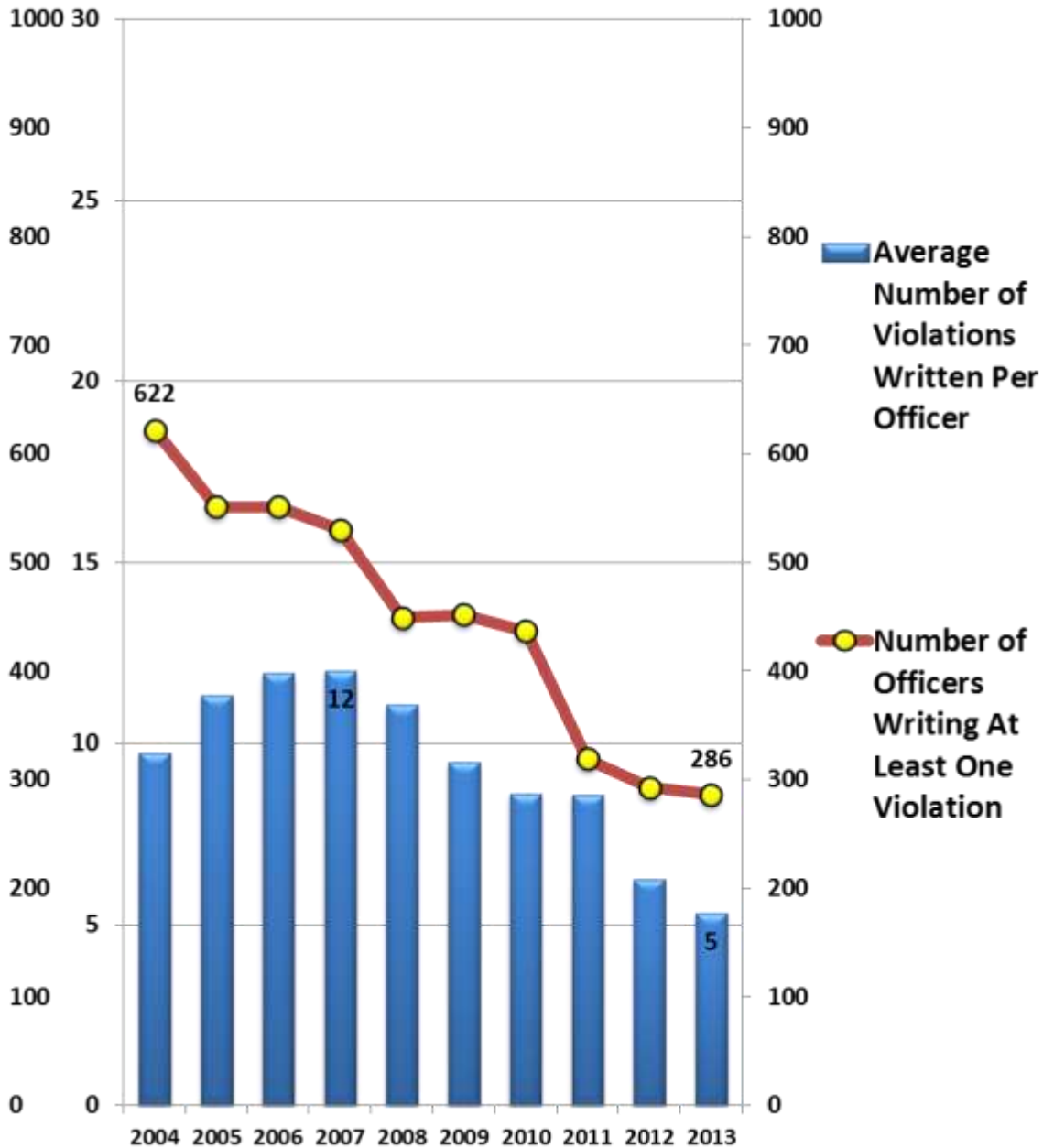
Total Number of Non-Traffic Violations Filed in Seattle Municipal Court 2004-2013



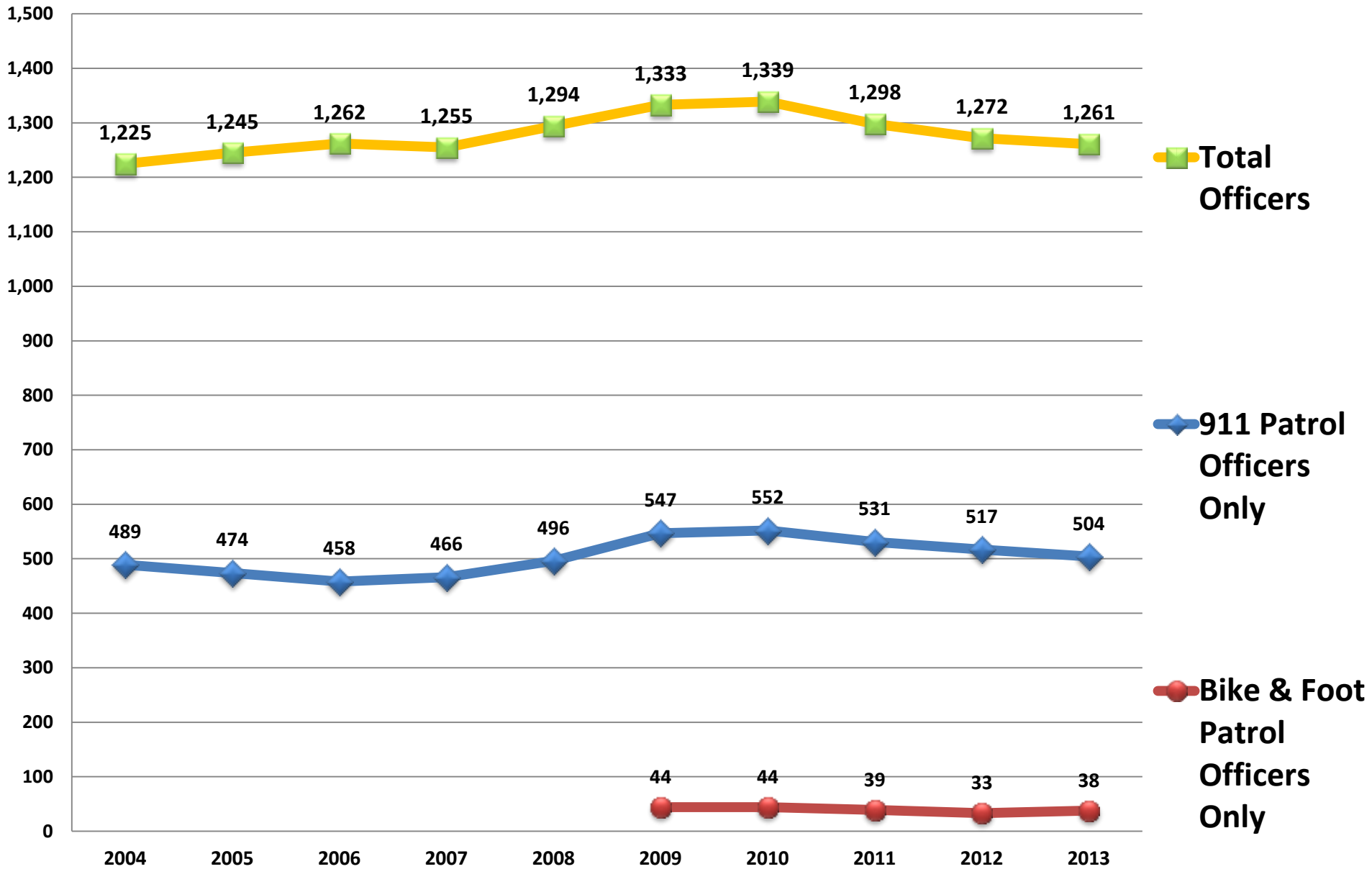
NON-TRAFFIC CRIMINAL



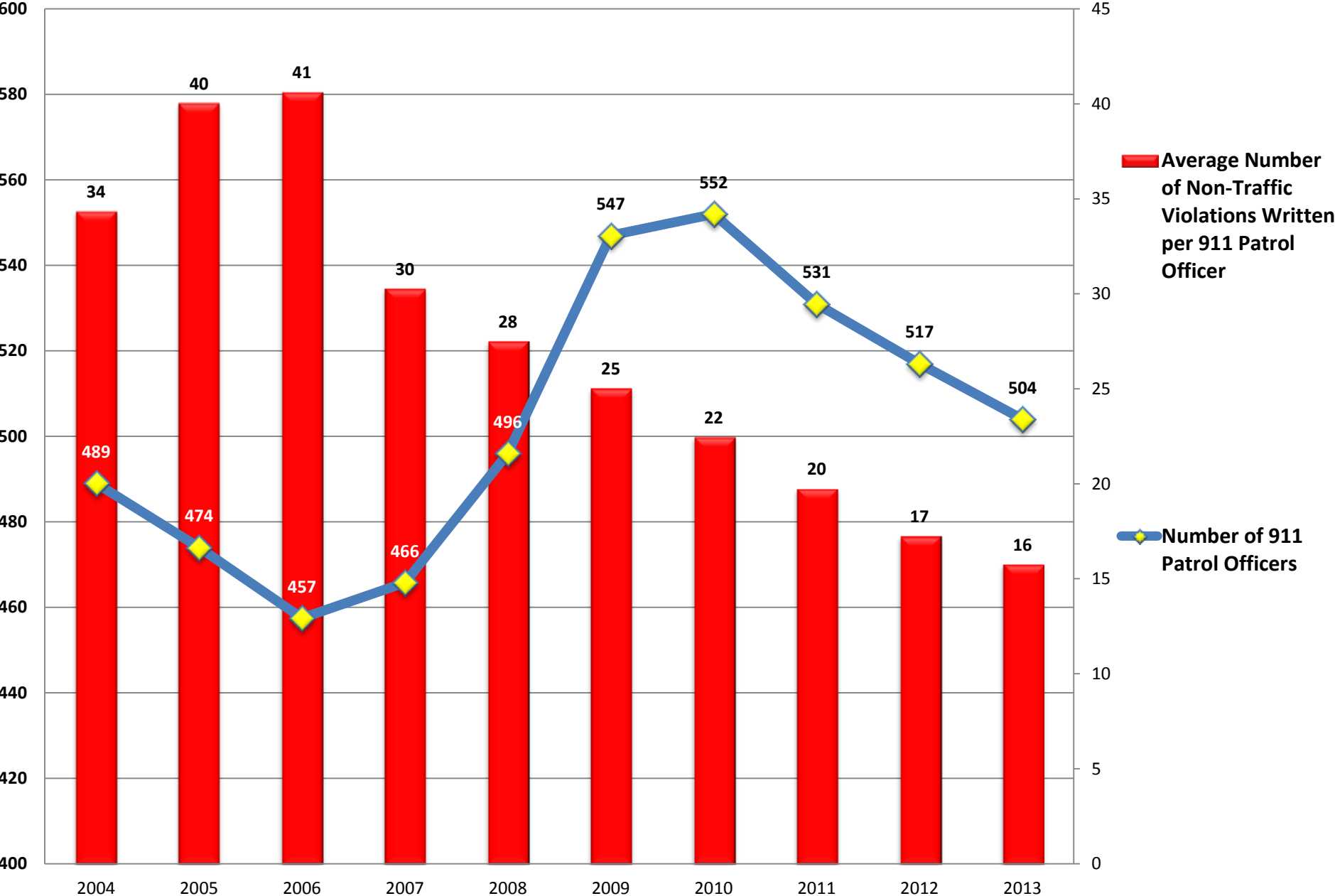
NON-TRAFFIC INFRACTIONS



Number of Filled Sworn Positions in SPD



Non-Traffic Crimes and Infractions Issued



SPD

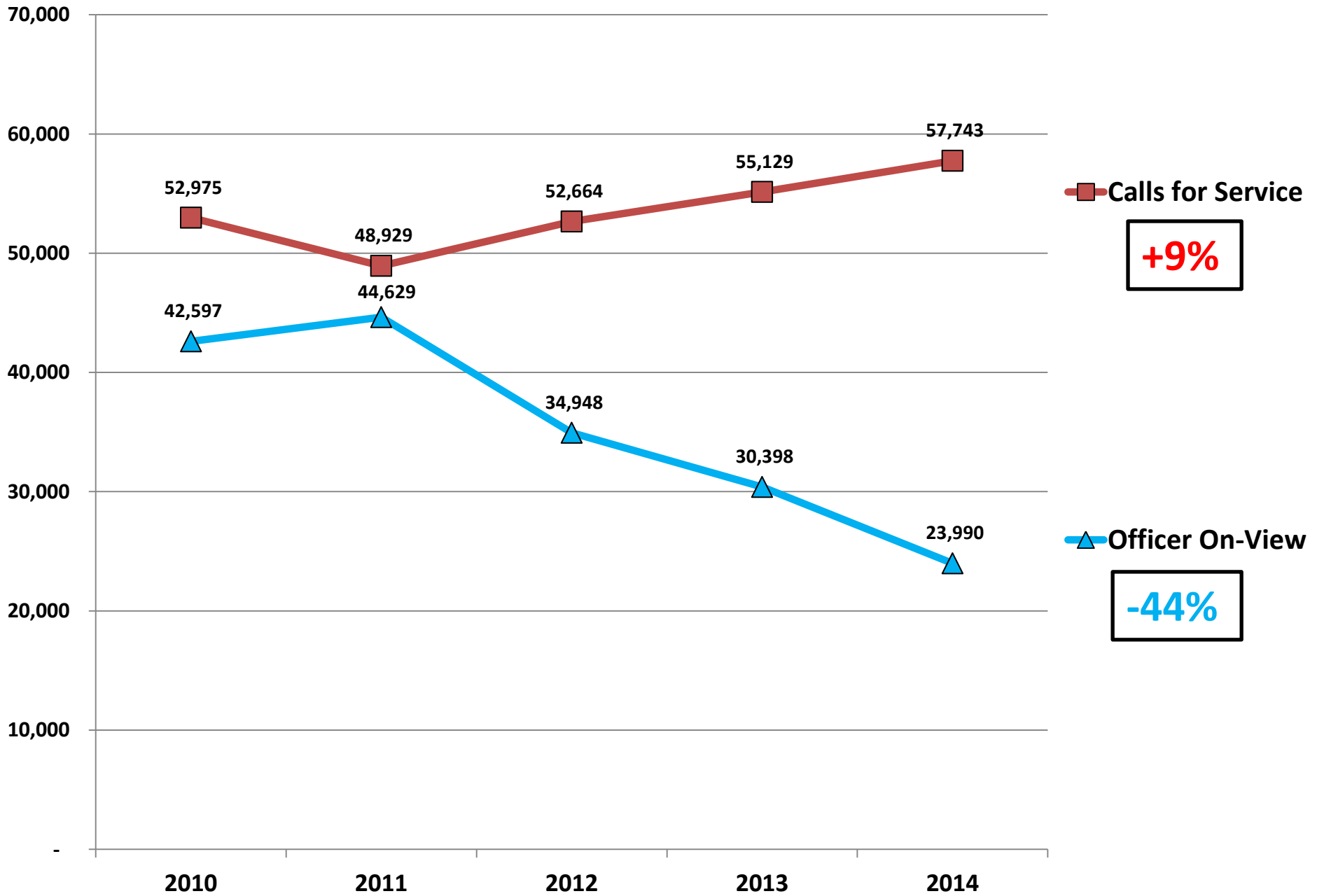
Records Management System

(RMS)

Computer Aided Dispatch

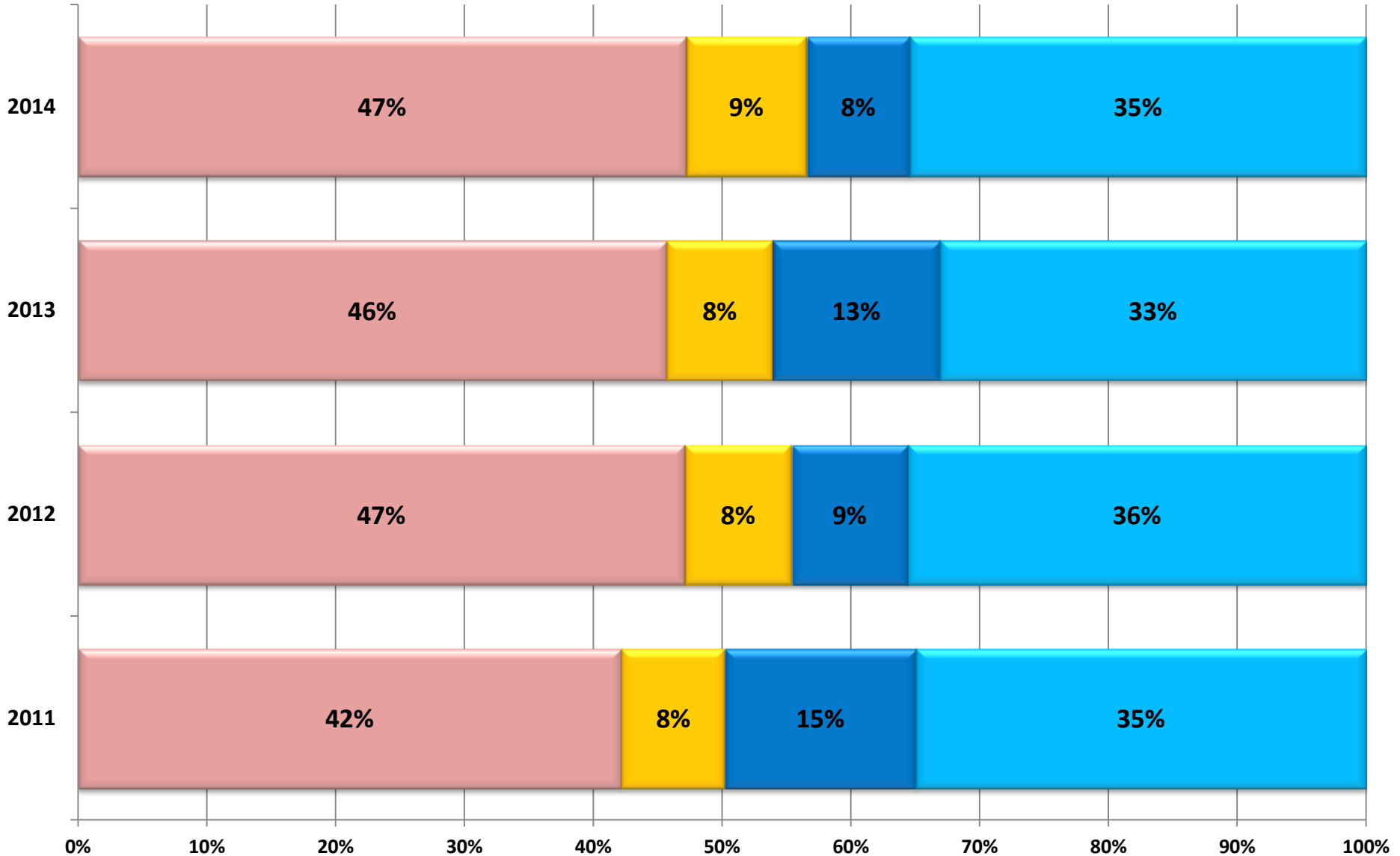
(CAD)

First Quarter - SPD Activity



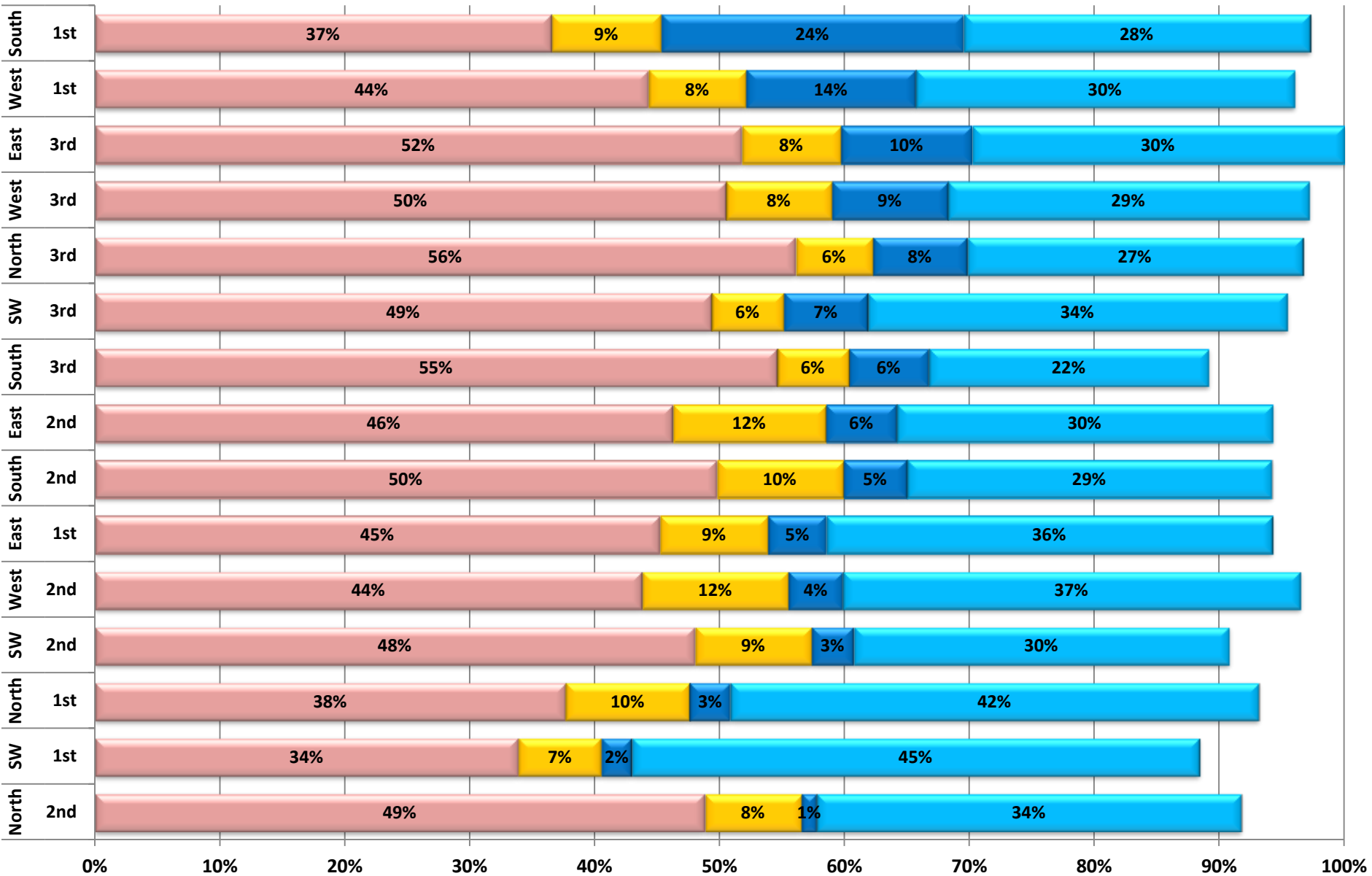
Percentage of Time Spent by 911 Patrol Units - First Quarter

■ Calls for Service ■ Administrative ■ Onview & Officer Initiated ■ Unstructured Time

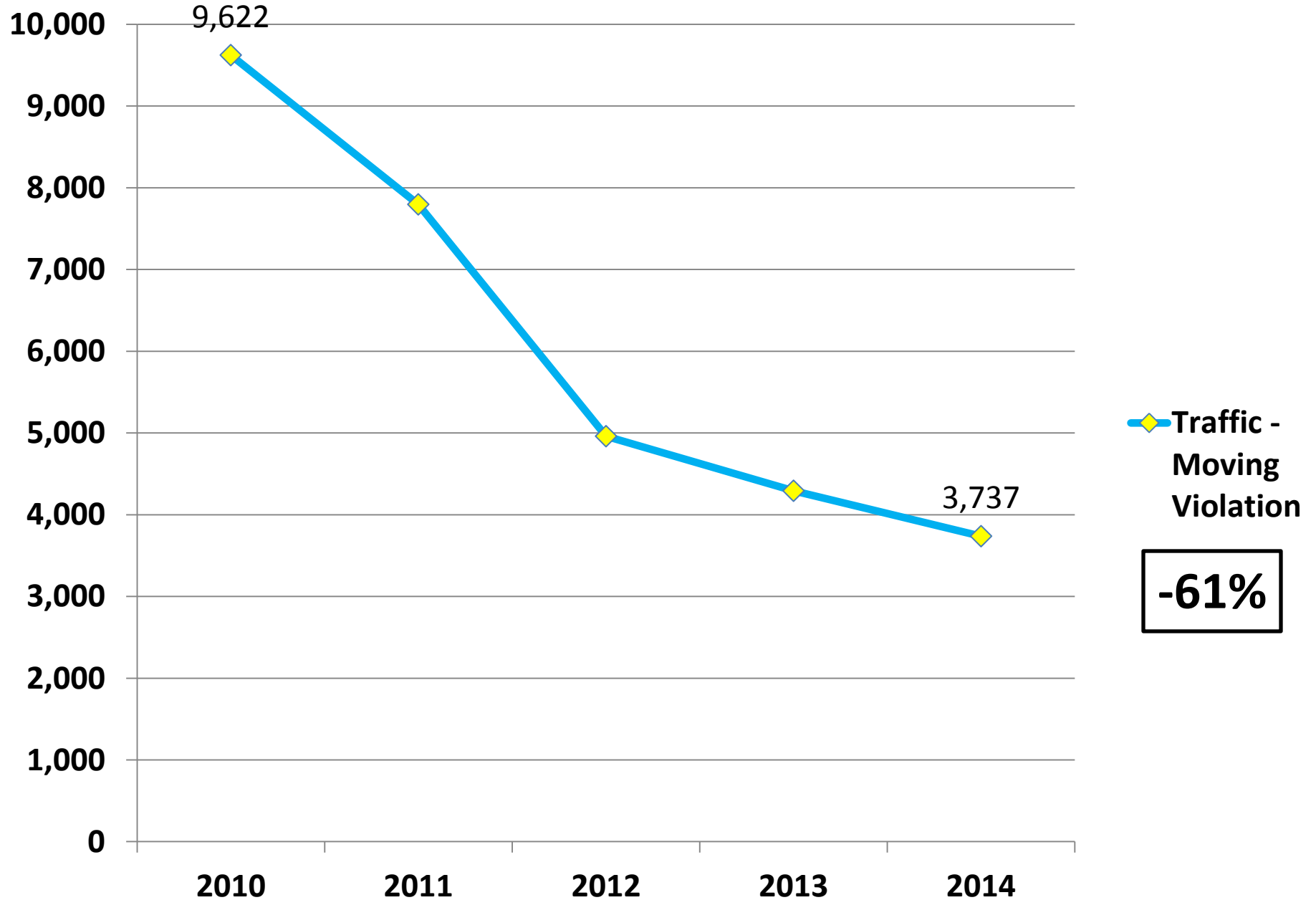


Percentage of Time Spent by 911 Patrol Units - March 2014

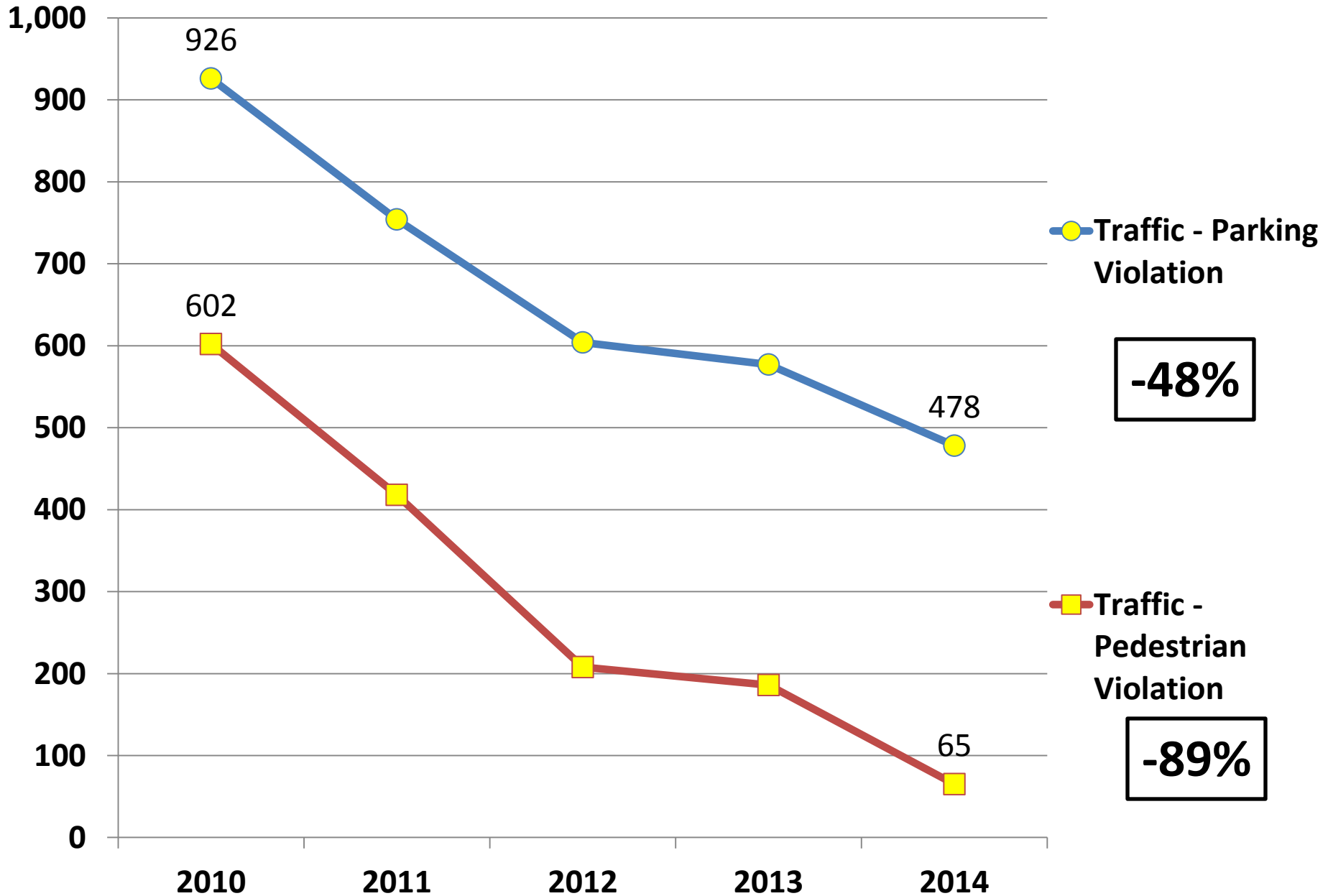
■ Calls for Service
 ■ Administrative
 ■ Onview & Officer Initiated
 ■ Unstructured Time



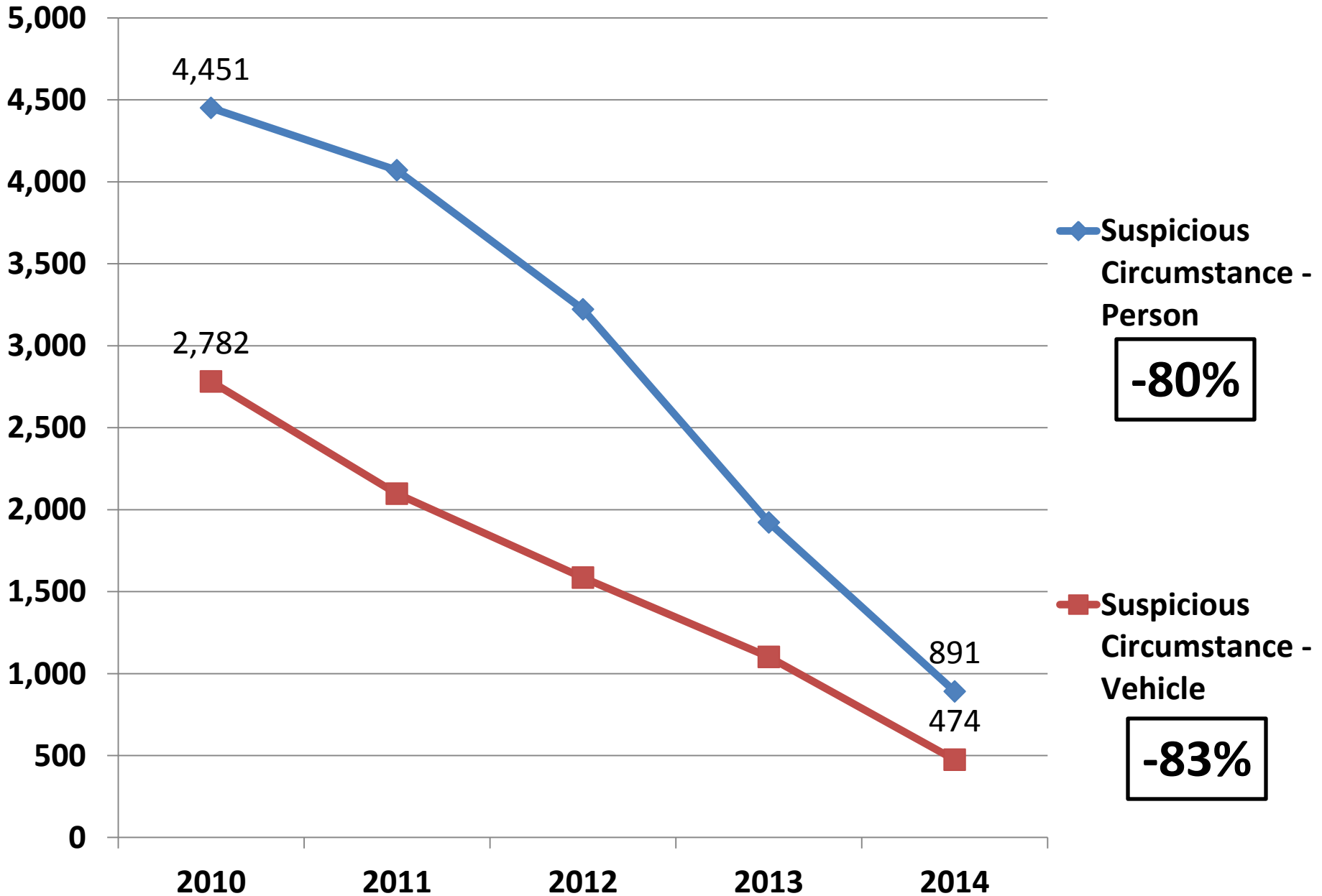
Officer On-Views – First Quarter



Officer On-Views – First Quarter



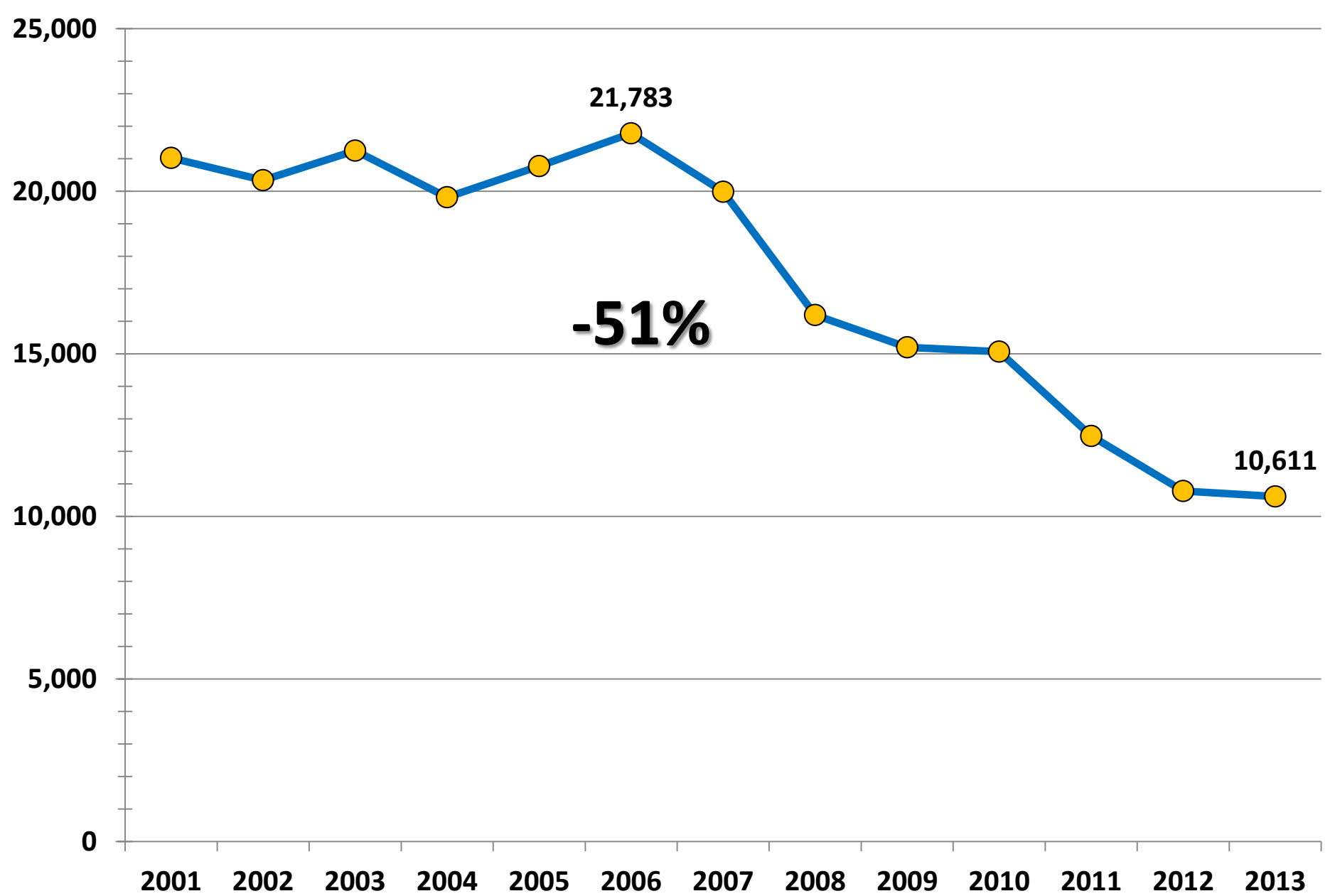
Officer On-Views – First Quarter



King County Jail

SPD Jail Bookings

Annual Number of SPD Bookings into the King County Jail

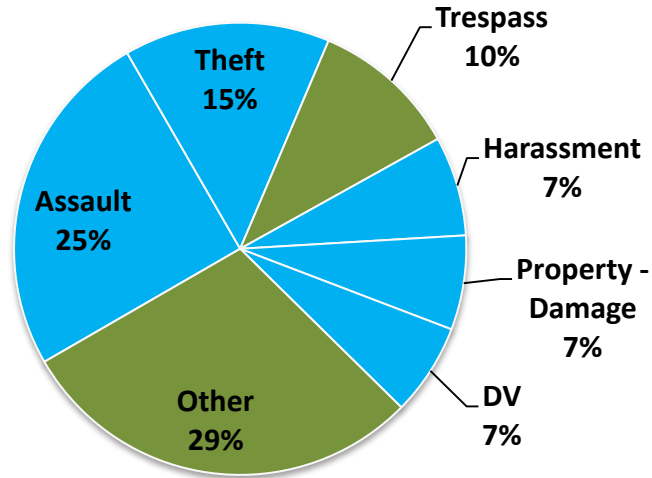


Seattle Municipal Court

Types of Crimes and Infractions

Non-Traffic Criminal 2004-2013

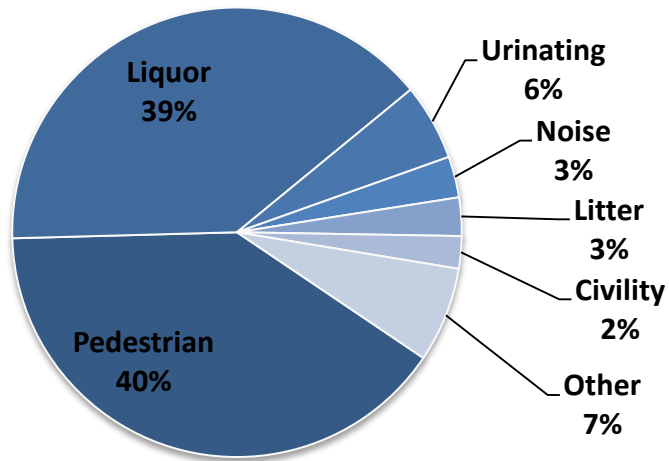
91,174 SMC Violations



| Crime | Peak Year | Peak Total | 2013 Total | Change |
|-----------------|-----------|------------|------------|--------|
| Assault | 2005 | 2,786 | 1,865 | -33% |
| Theft | 2005 | 1,649 | 1,207 | -27% |
| Trespass | 2005 | 1,746 | 627 | -64% |
| Harassment | 2006 | 826 | 614 | -26% |
| Property Damage | 2005 | 753 | 521 | -31% |
| DV | 2009 | 940 | 499 | -47% |
| Other | 2005 | 4,487 | 1,103 | -75% |

Non-Traffic Infractions 2004-2013

44,486 SMC Violations

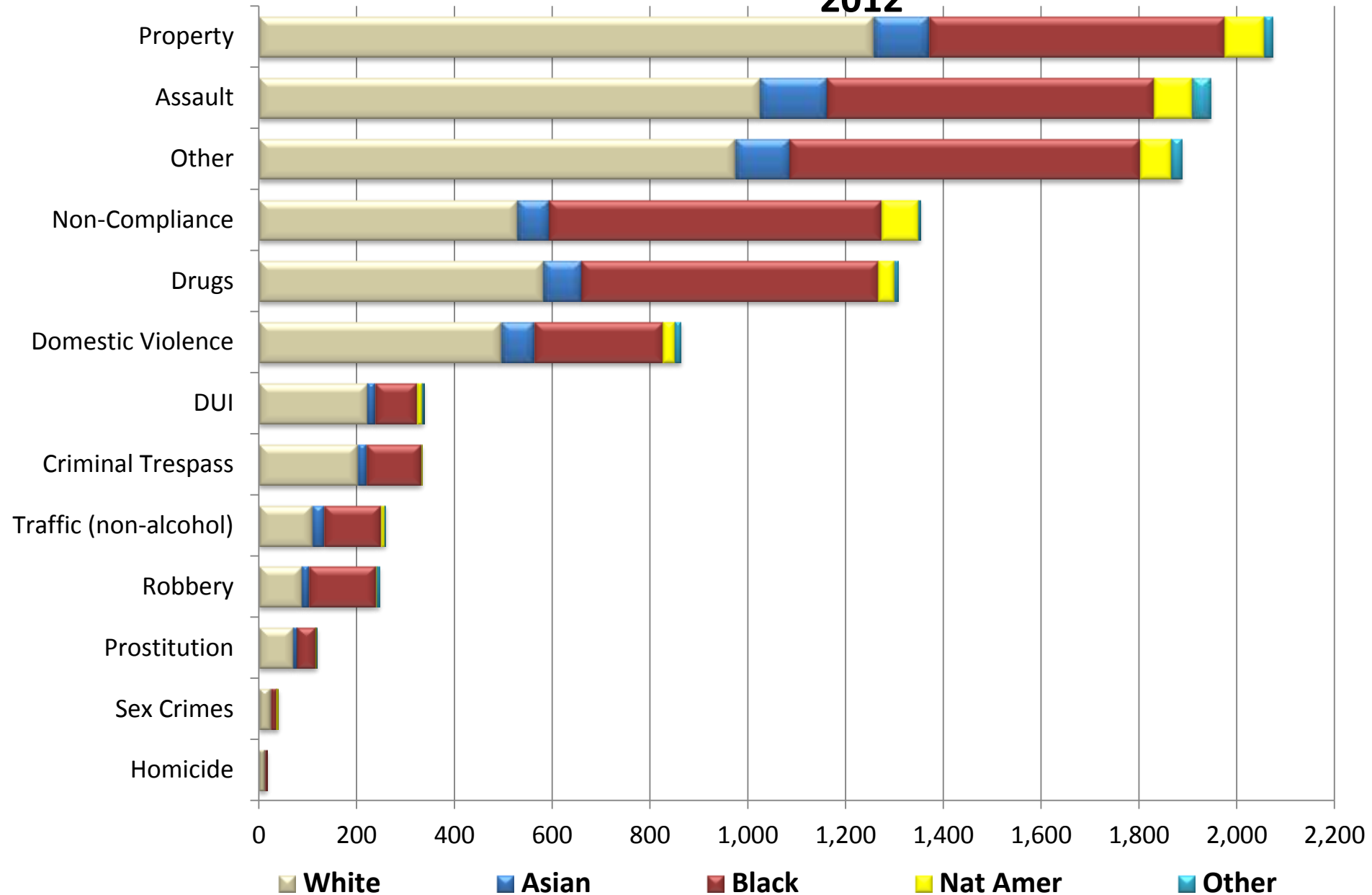


| Violation | Peak Year | Peak Total | 2013 Total | Change |
|------------|-----------|------------|------------|--------|
| Pedestrian | 2006 | 3,067 | 720 | -77% |
| Liquor | 2004 | 2,616 | 409 | -84% |
| Urinating | 2004 | 333 | 101 | -70% |
| Noise | 2004 | 212 | 60 | -72% |
| Litter | 2010 | 181 | 42 | -77% |
| Civility | 2004 | 231 | 36 | -84% |
| Other | 2004 | 689 | 194 | -72% |

RACIAL DISPARITY ANALYSIS

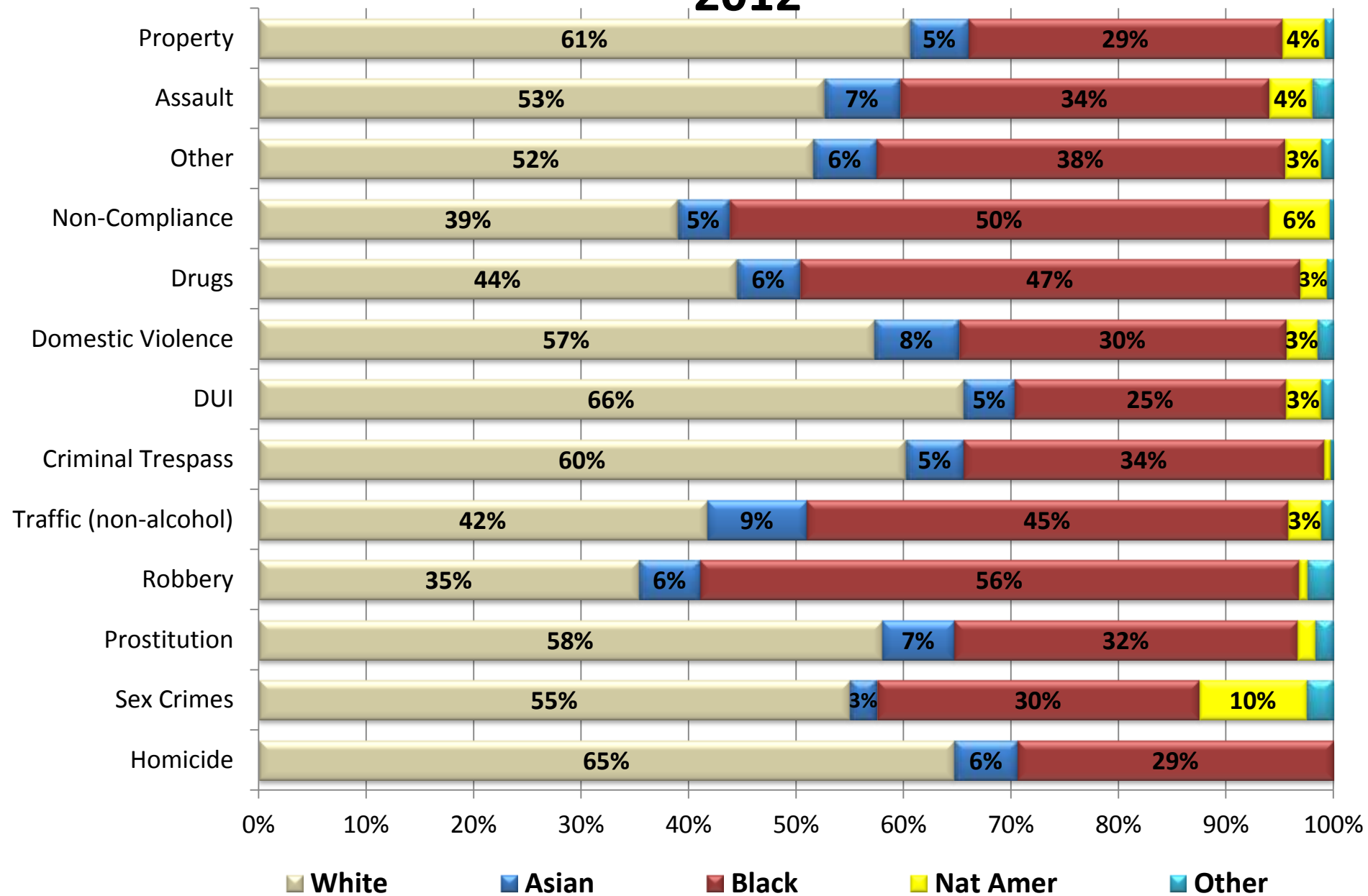
SPD Bookings into the King County Jail

2012



SPD Bookings into the King County Jail

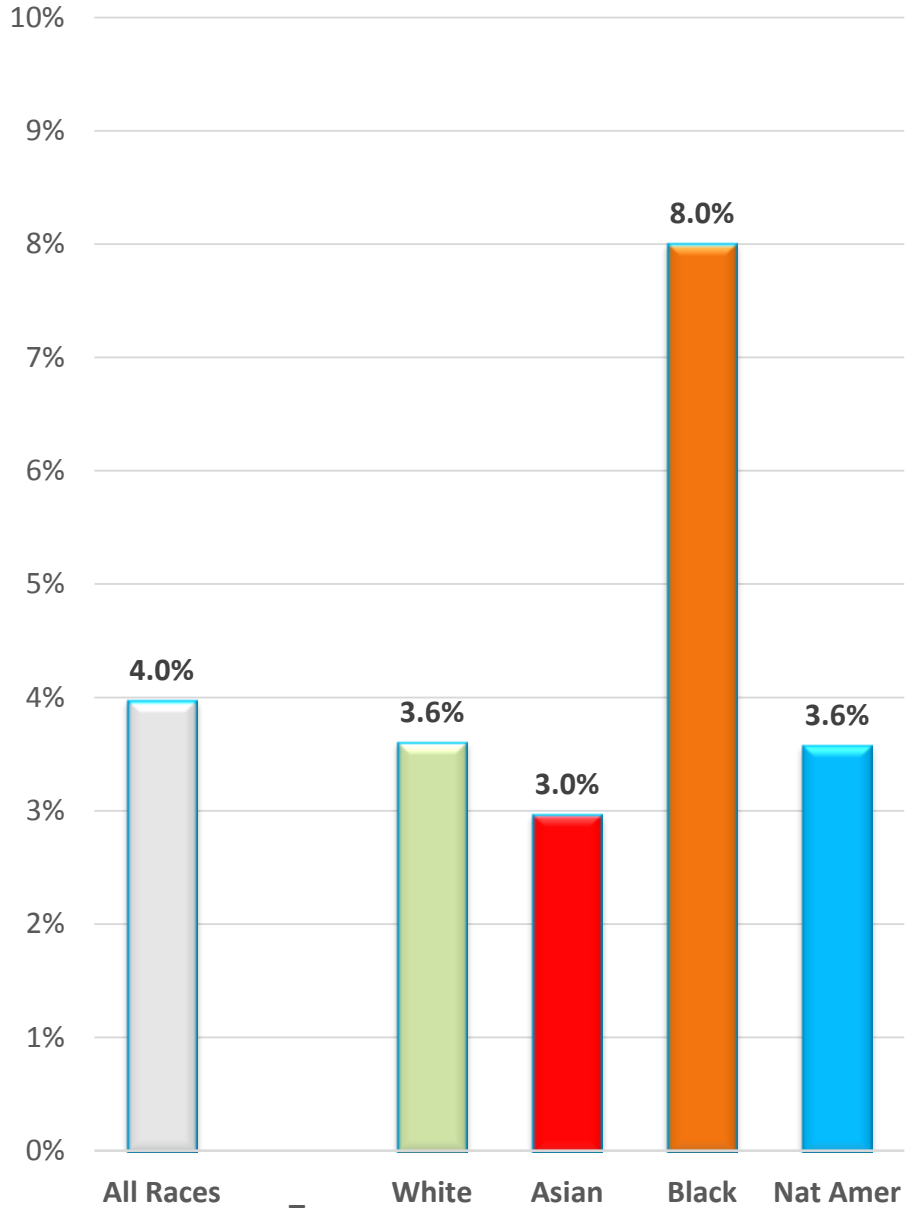
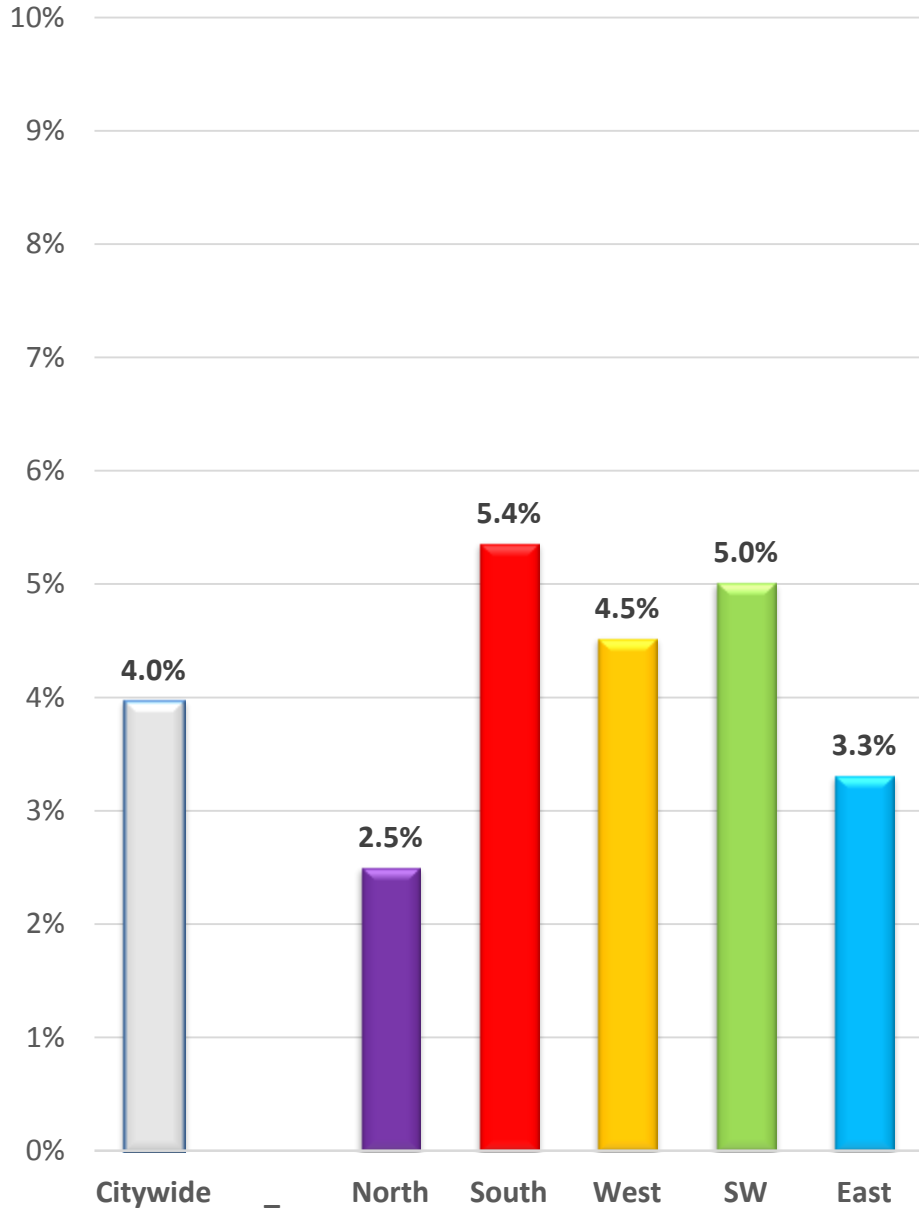
2012



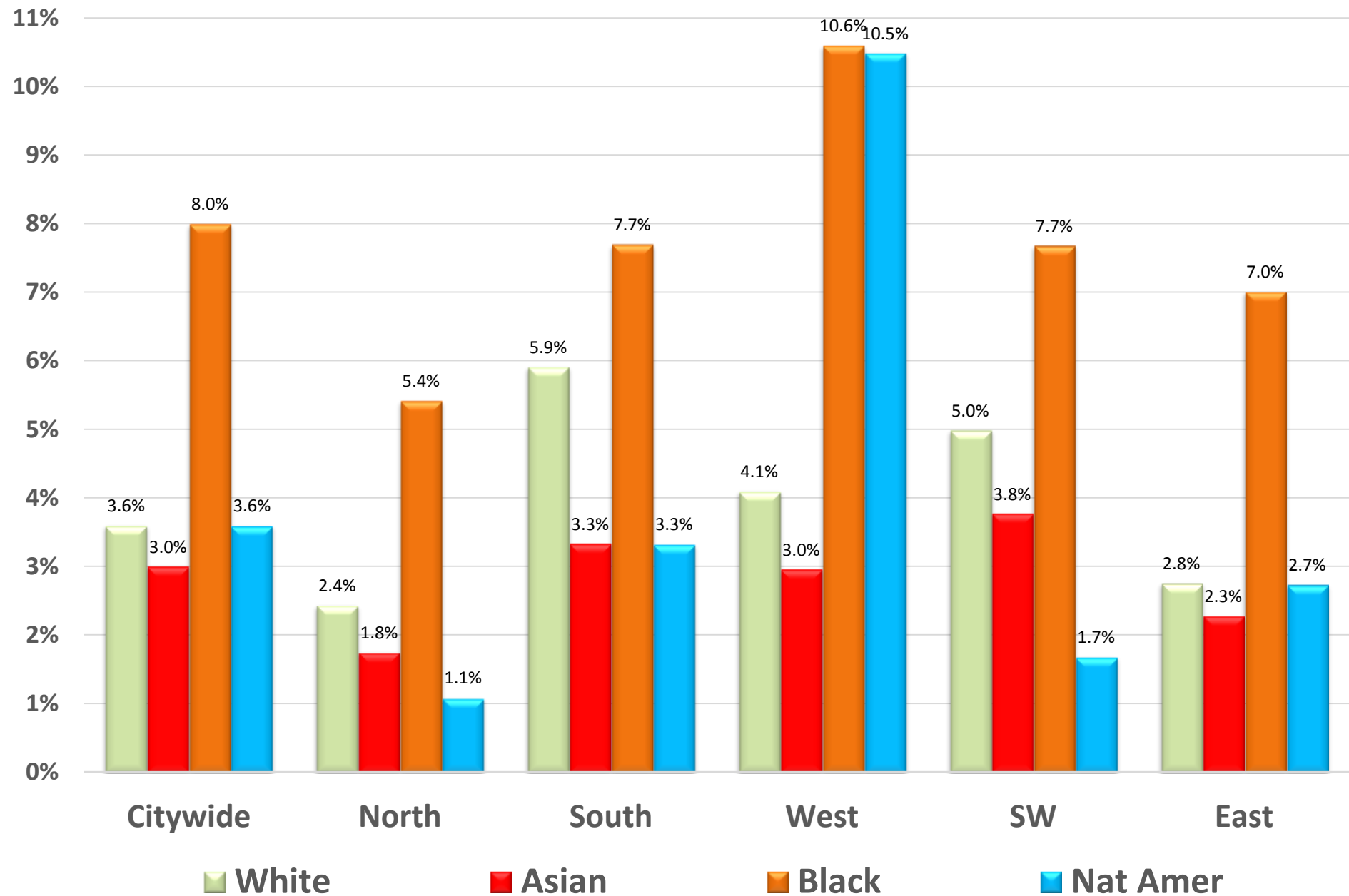
Population by Precinct Using Zip Code Boundaries

| PRECINCT | Population | White | Asian | Black | Nat Amer | Other | Total |
|--------------|----------------|--------------|--------------|-------------|-------------|-------------|-------------|
| North | 289,074 | 77.2% | 11.4% | 3.5% | 0.7% | 7.2% | 100% |
| South | 116,529 | 33.1% | 31.7% | 22.9% | 0.8% | 11.5% | 100% |
| West | 98,201 | 75.9% | 10.9% | 5.9% | 1.0% | 6.2% | 100% |
| SW | 80,634 | 72.3% | 10.2% | 7.3% | 1.1% | 9.2% | 100% |
| East | 73,041 | 75.2% | 7.8% | 9.2% | 0.6% | 7.2% | 100% |
| Total | 657,479 | 68.4% | 14.3% | 8.4% | 0.8% | 8.1% | 100% |

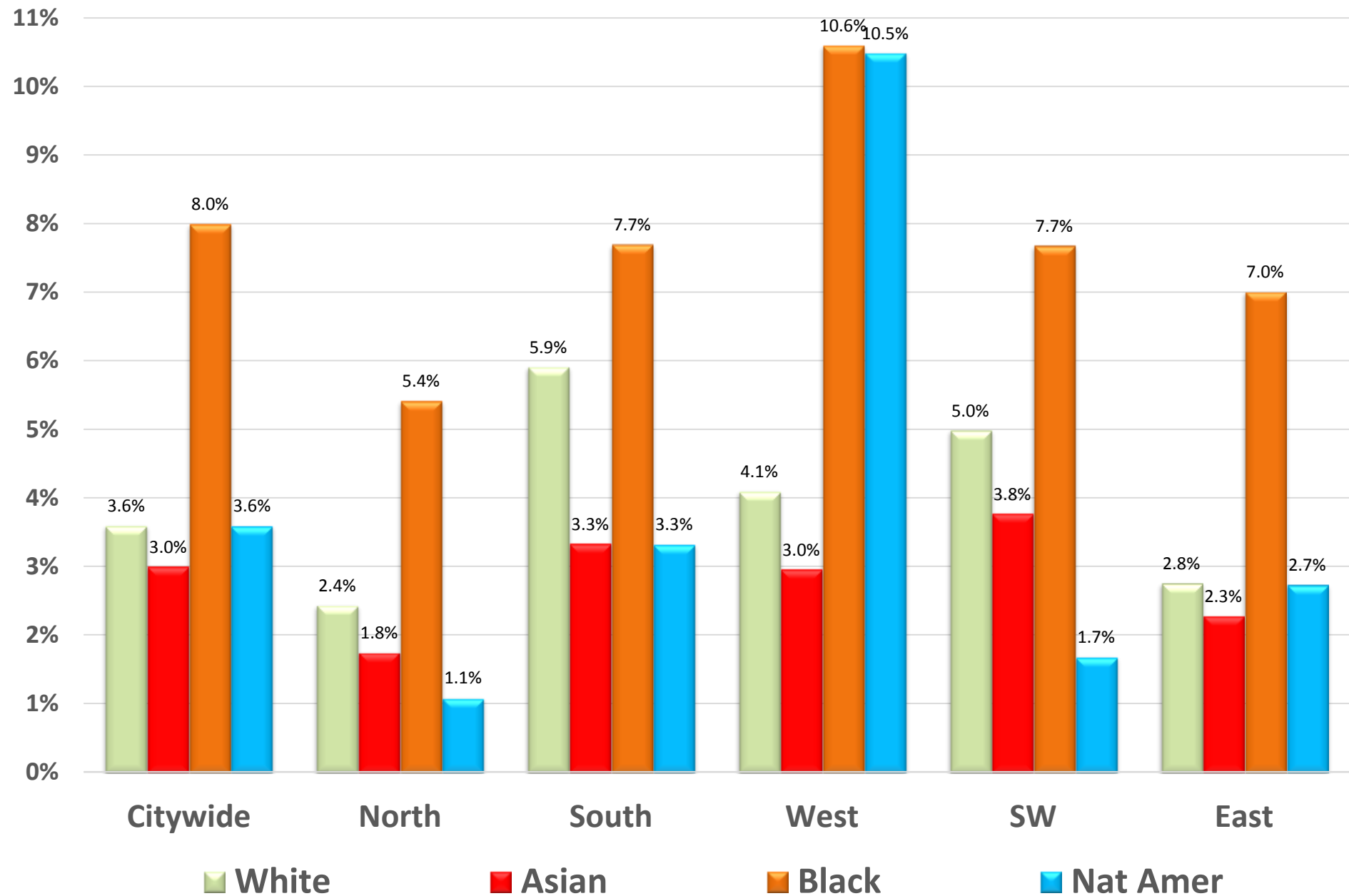
Percentage of Seattle Residents Who Had At Least One Case Referred to Seattle Municipal Court in 2013



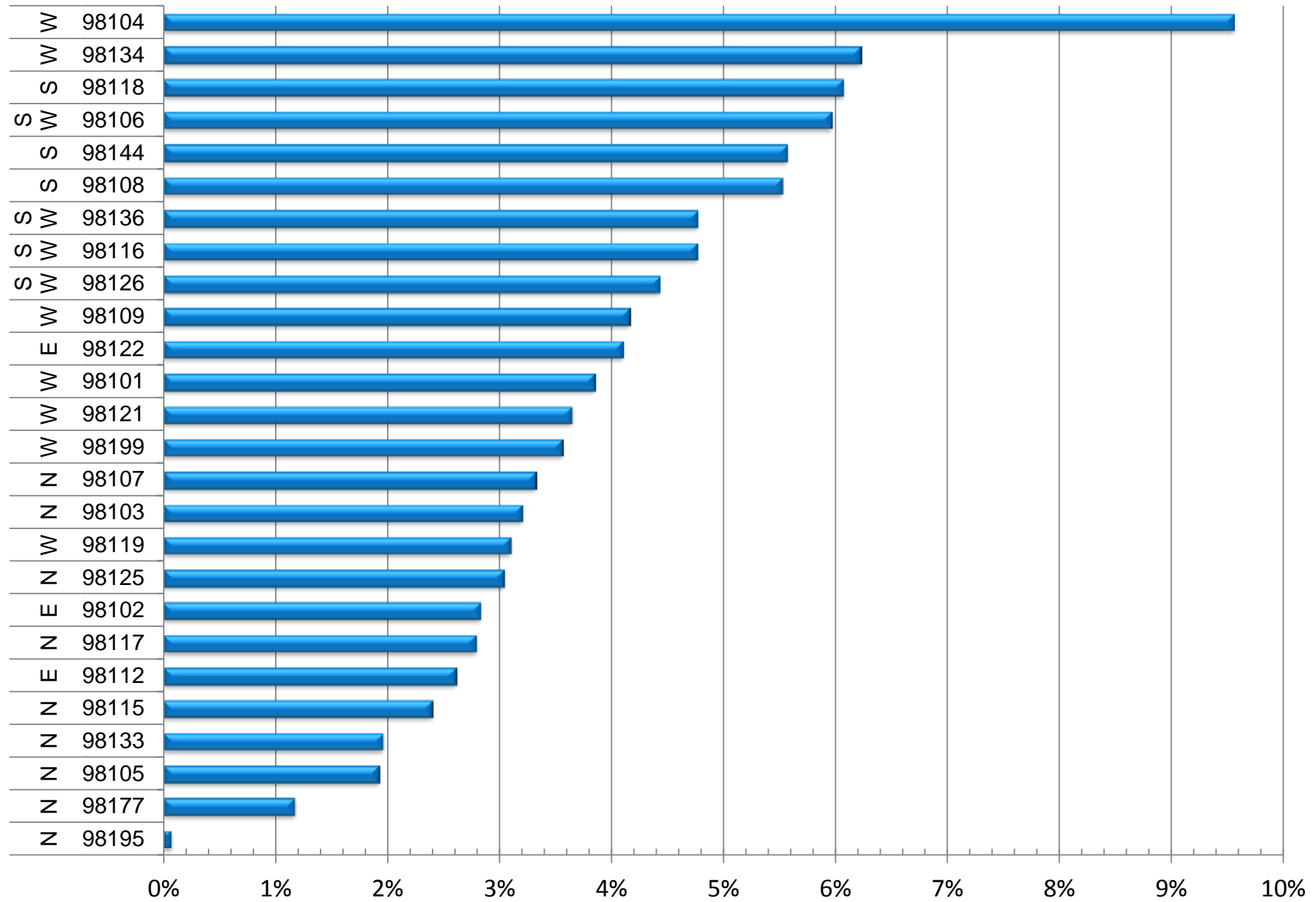
Percentage of Seattle Residents Who Had At Least One Case Referred to Seattle Municipal Court in 2013



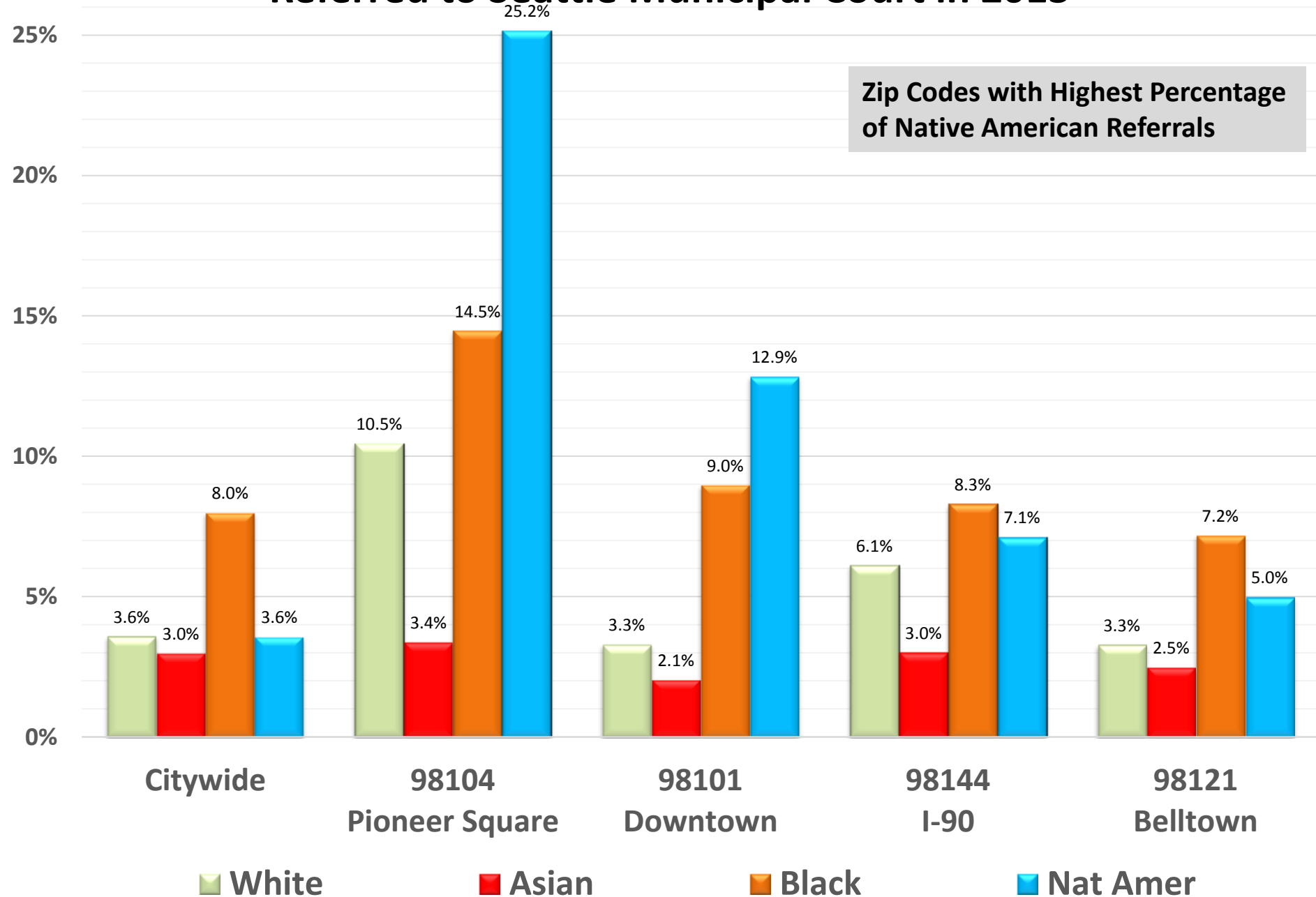
Percentage of Seattle Residents Who Had At Least One Case Referred to Seattle Municipal Court in 2013



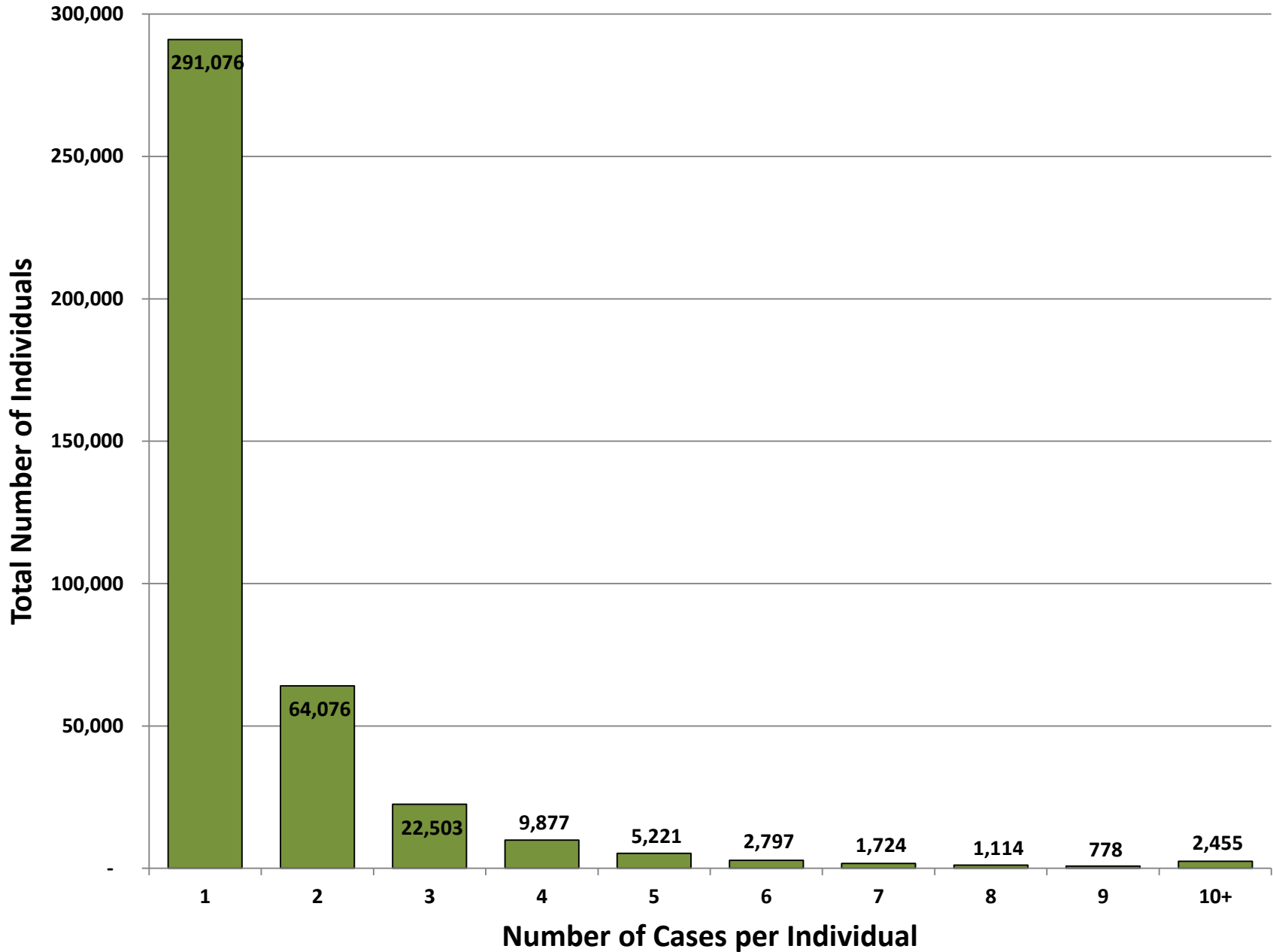
Percentage of Seattle Residents Who Had At Least One Case Referred to Seattle Municipal Court in 2013



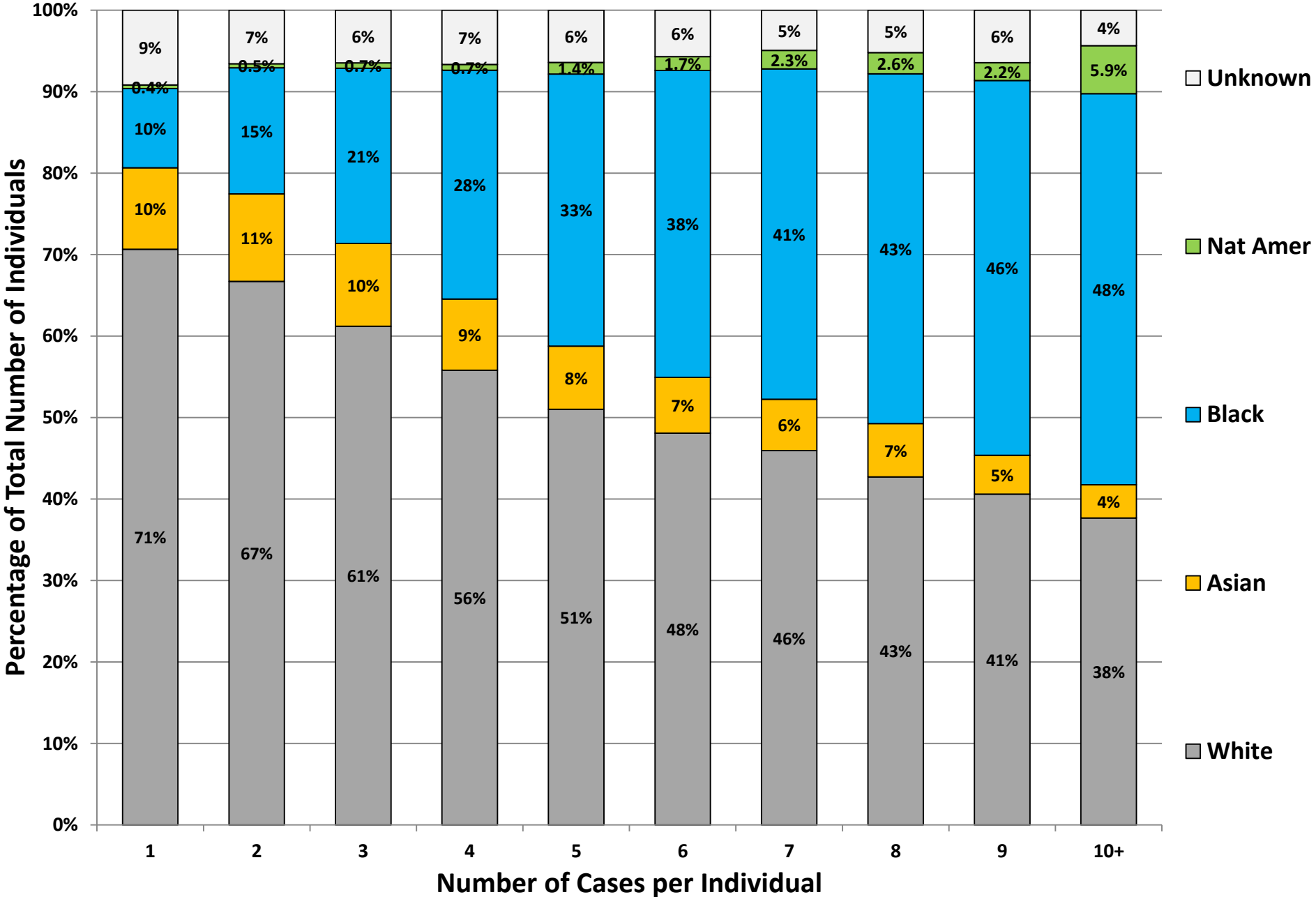
Percentage of Seattle Residents Who Had At Least One Case Referred to Seattle Municipal Court in 2013



Number of Seattle Municipal Court Cases per Individual (Criminal & Civil) 2004 to 2013



Number of Seattle Municipal Court Cases per Individual (Criminal & Civil) 2004 to 2013



Racial Disparity Crimes and Infractions

| Seattle | White | Asian | Black | Latino | Nat Amer | Other Multi Race |
|-------------------|---------|---------|---------|--------|----------|------------------|
| Population | 69.9% | 13.8% | 7.6% | 6.6% | 0.8% | 8.0% |
| Highest Disparity | >90% | >40% | >40% | >10% | >10% | |
| Medium Disparity | 80%-90% | 30%-40% | 30%-40% | 5%-10% | 4%-10% | |
| Lowest Disparity | 70%-80% | 20%-30% | 20%-30% | 4%-5% | 2%-4% | |
| No Disparity | <70% | <20% | <20% | <4% | <2% | |

Crimes and Infractions Referred to SMC 2004-2013

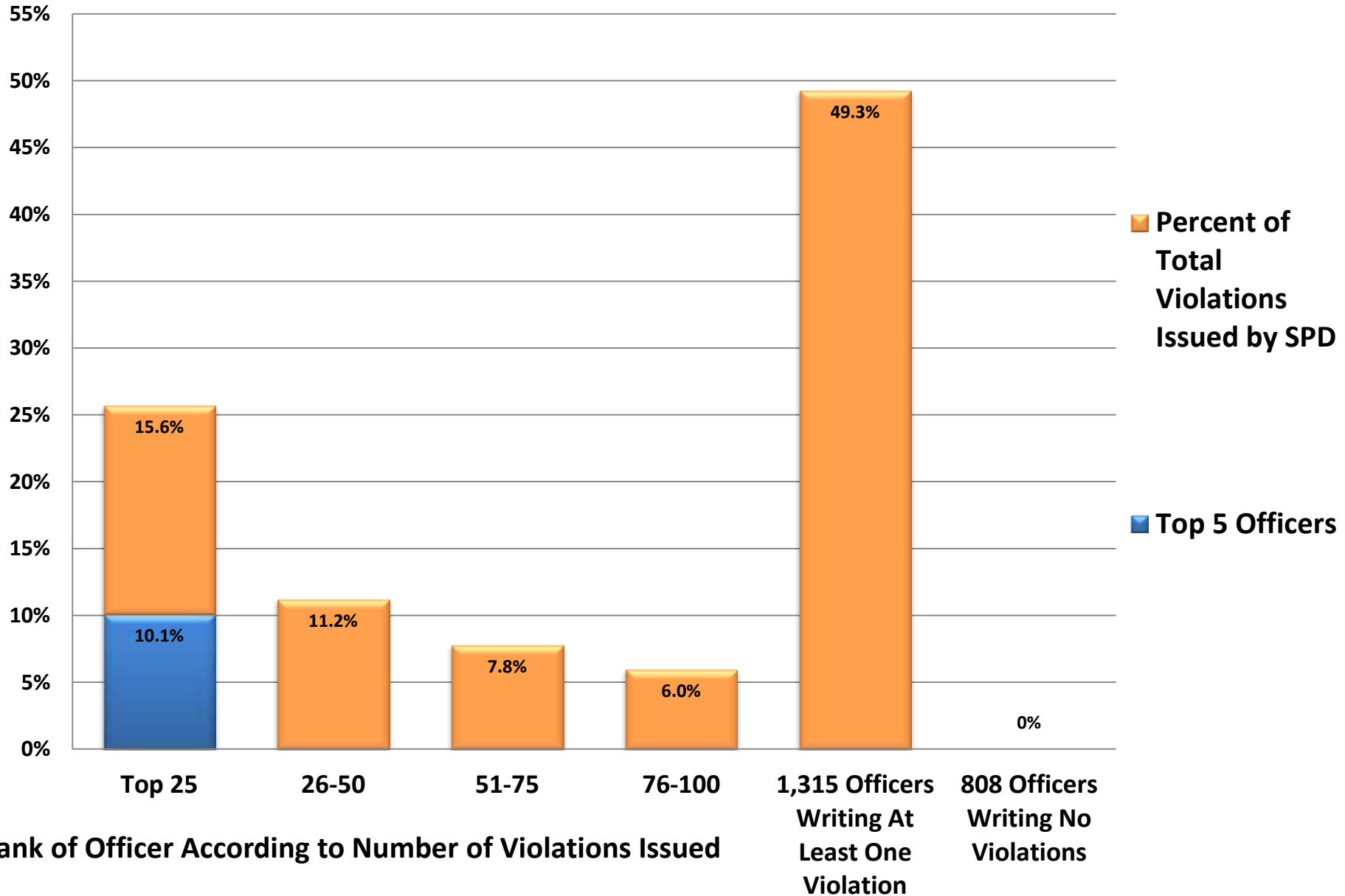
| Total | Violation | Type of Violation | White | Asian | Black | Latino | Nat Amer | Unknown | Total |
|---------|----------------|----------------------|-------|-------|-------|--------|----------|---------|-------|
| 350,743 | Infrac-Traffic | Moving | 66% | 12% | 14% | | 0% | 9% | 100% |
| 126,561 | Infrac-Traffic | Insurance | 58% | 9% | 24% | | 0% | 9% | 100% |
| 75,667 | Infrac-Traffic | Vehicle License | 68% | 9% | 16% | | 0% | 6% | 100% |
| 37,160 | Infrac-Traffic | Drivers License | 49% | 7% | 33% | | 1% | 11% | 100% |
| 24,086 | Crime-Traffic | Drivers License | 42% | 6% | 42% | 5% | 1% | 4% | 100% |
| 22,794 | Crime | Assault | 51% | 6% | 35% | 3% | 3% | 3% | 100% |
| 21,167 | Infraction | Animal | 73% | 5% | 10% | 1% | 0% | 11% | 100% |
| 20,451 | Crime-Traffic | Moving | 68% | 7% | 16% | 5% | 1% | 4% | 100% |
| 17,851 | Infraction | Pedestrian | 66% | 5% | 20% | 1% | 1% | 5% | 100% |
| 17,566 | Infraction | Liquor | 53% | 2% | 24% | 2% | 14% | 5% | 100% |
| 13,428 | Crime | Theft | 55% | 5% | 32% | 2% | 3% | 2% | 100% |
| 12,607 | Infrac-Traffic | Seat Belt | 59% | 10% | 24% | | 0% | 6% | 100% |
| 10,583 | Infrac-Traffic | Other | 56% | 10% | 26% | | 1% | 8% | 100% |
| 9,701 | Infrac-Traffic | Equipment | 54% | 9% | 29% | | 0% | 7% | 100% |
| 9,603 | Crime | Trespass | 51% | 6% | 36% | 1% | 4% | 2% | 100% |
| 7,248 | Infrac-Traffic | Driving w/Cell Phone | 69% | 9% | 12% | | 0% | 10% | 100% |
| 6,498 | Crime | Harassment | 49% | 5% | 40% | 2% | 2% | 3% | 100% |
| 6,149 | Crime | Property - Damage | 59% | 6% | 29% | 2% | 2% | 3% | 100% |
| 4,960 | Crime | DV - No Contact | 55% | 5% | 33% | 2% | 3% | 2% | 100% |
| 4,362 | Infrac-Traffic | Bicycle | 82% | 4% | 9% | | 0% | 5% | 100% |
| 4,059 | Crime | Sex | 62% | 6% | 22% | 4% | 3% | 3% | 100% |
| 4,031 | Crime | Fail to Respond | 51% | 2% | 21% | 2% | 19% | 4% | 100% |
| 3,905 | Crime | Obstructing | 47% | 5% | 42% | 1% | 2% | 2% | 100% |
| 2,976 | Crime | Weapon | 54% | 6% | 33% | 2% | 3% | 3% | 100% |
| 2,913 | Crime | Drug | 35% | 5% | 54% | 1% | 3% | 2% | 100% |
| 2,449 | Infraction | Urinating | 54% | 5% | 27% | 3% | 6% | 5% | 100% |
| 2,337 | Crime | False Reporting | 43% | 5% | 45% | 2% | 3% | 2% | 100% |

Crimes and Infractions Referred to SMC 2004-2013

| Total | Violation | Type of Violation | White | Asian | Black | Latino | Nat Amer | Unknown | Total |
|-------|---------------|-------------------|-------|-------|-------|--------|----------|---------|-------|
| 1,637 | Crime-Traffic | Vehicle License | 44% | 4% | 40% | 5% | 0% | 6% | 100% |
| 1,311 | Infraction | Noise | 71% | 6% | 15% | 3% | 1% | 6% | 100% |
| 1,228 | Infraction | Litter | 48% | 4% | 37% | 2% | 5% | 5% | 100% |
| 1,038 | Infraction | Civility | 76% | 1% | 18% | 0% | 4% | 1% | 100% |
| 1,037 | Crime | Resisting | 51% | 5% | 38% | 1% | 3% | 2% | 100% |
| 1,031 | Crime | DV - Interfering | 52% | 6% | 33% | 4% | 2% | 3% | 100% |
| 893 | Crime | Attempt | 58% | 6% | 32% | 1% | 2% | 1% | 100% |
| 874 | Crime | Disorderly | 56% | 3% | 34% | 1% | 4% | 2% | 100% |
| 824 | Crime | Liquor - Minor | 64% | 7% | 21% | 2% | 2% | 4% | 100% |
| 750 | Crime-Traffic | Equipment | 56% | 7% | 27% | 5% | 1% | 4% | 100% |
| 738 | Infraction | DWLS | 34% | 8% | 37% | 4% | 1% | 16% | 100% |
| 718 | Infraction | Bicycle | 86% | 2% | 9% | 0% | 0% | 3% | 100% |
| 704 | Crime | Protection Order | 53% | 4% | 36% | 1% | 3% | 3% | 100% |
| 696 | Crime | Probation | 41% | 4% | 44% | 0% | 7% | 3% | 100% |
| 558 | Infraction | Business | 28% | 4% | 50% | 0% | 2% | 15% | 100% |
| 508 | Crime | Business | 39% | 4% | 23% | 0% | 0% | 34% | 100% |
| 441 | Infraction | Boating | 89% | 2% | 4% | 1% | 0% | 4% | 100% |
| 306 | Crime | Failure to Sign | 61% | 2% | 26% | 1% | 7% | 4% | 100% |
| 220 | Crime | Minor | 40% | 11% | 34% | 1% | 5% | 8% | 100% |
| 216 | Infraction | Trespass | 78% | 0% | 18% | 1% | 2% | 1% | 100% |
| 207 | Crime-Traffic | Other | 31% | 8% | 55% | 4% | 0% | 1% | 100% |
| 159 | Infraction | Tobacco | 49% | 4% | 42% | 0% | 2% | 4% | 100% |
| 118 | Crime | Fraud | 50% | 4% | 41% | 1% | 3% | 2% | 100% |
| 96 | Crime | Other | 60% | 4% | 28% | 0% | 1% | 6% | 100% |
| 84 | Crime | Animal | 52% | 4% | 37% | 1% | 4% | 2% | 100% |
| 75 | Infraction | Other | 61% | 5% | 19% | 0% | 1% | 13% | 100% |
| 74 | Crime | Reckless | 61% | 5% | 23% | 4% | 4% | 3% | 100% |
| 55 | Infraction | Alarm | 9% | 2% | 5% | 0% | 0% | 84% | 100% |
| 46 | Infraction | Reckless | 89% | 4% | 2% | 0% | 0% | 4% | 100% |
| 37 | Infraction | Drug | 59% | 0% | 24% | 8% | 5% | 3% | 100% |

Violations Issued for High Disparity Offenses 2004-2013

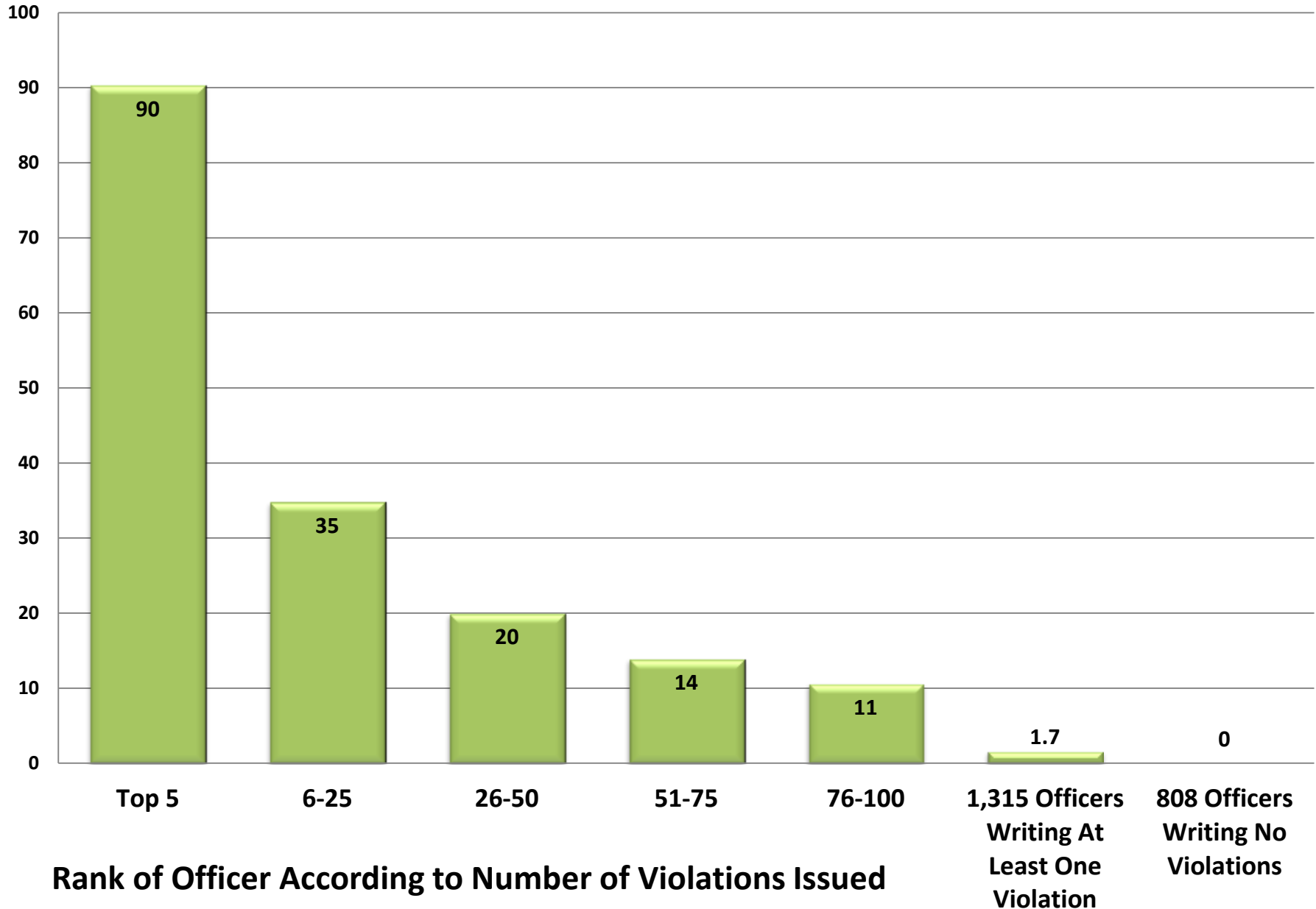
44,660 Total Violations



Average Number of Violations Issued by Each Officer Annually

2004-2013

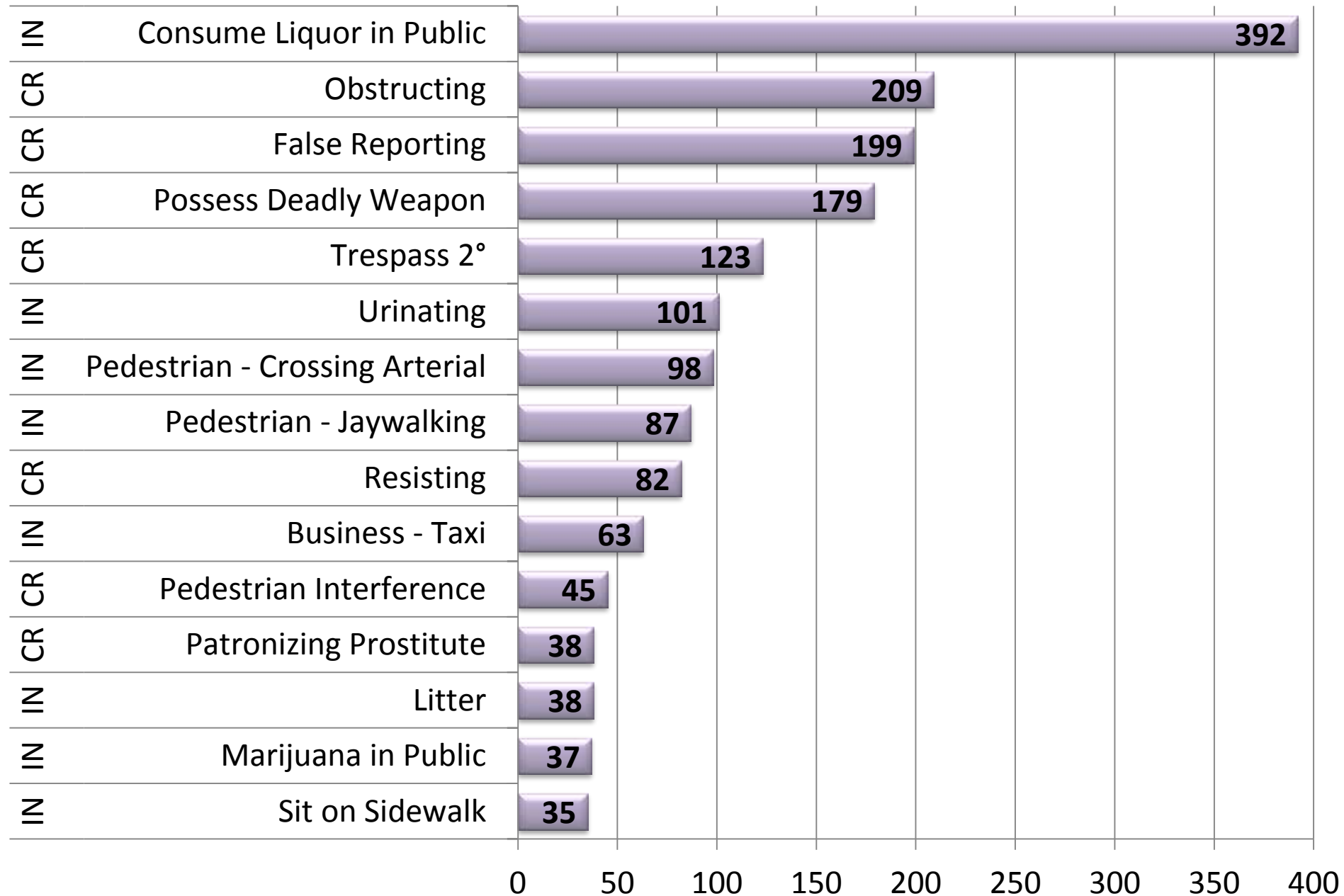
44,660 Total Violations



**High Disparity
High Discretion
Violations**

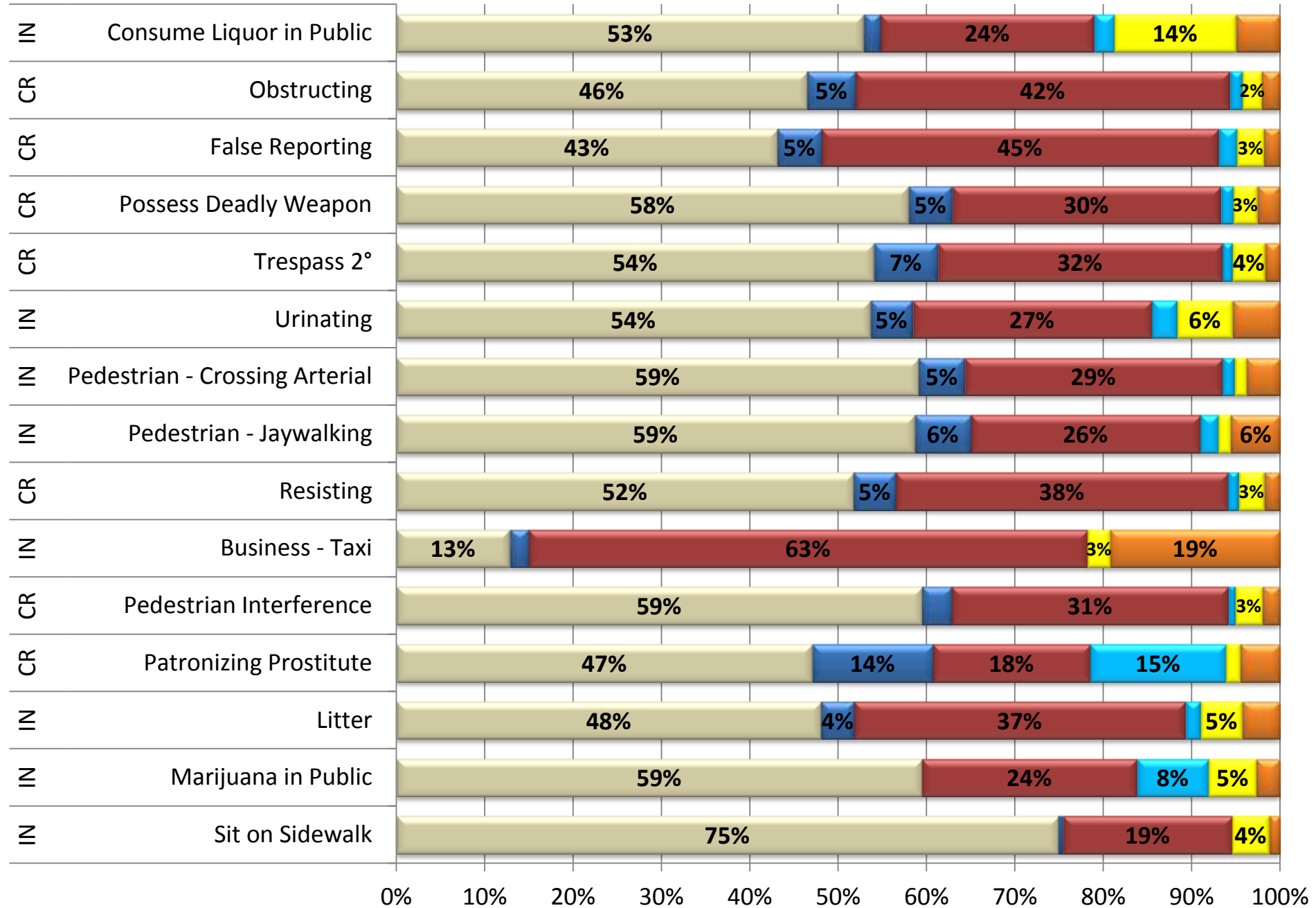
TOP 15 VIOLATIONS IN 2013

Top 15 Violations in 2013



RACE

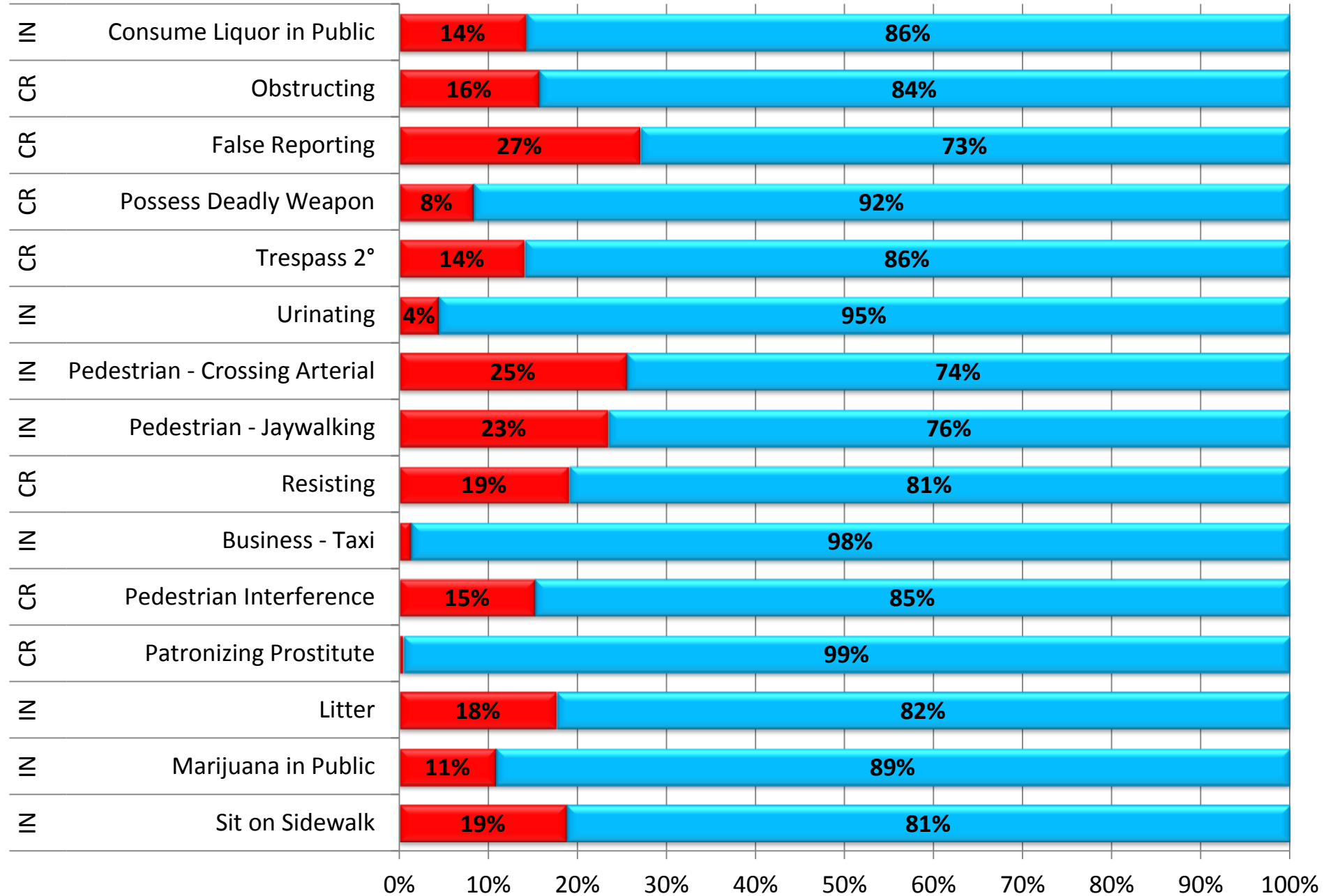
■ White
 ■ Asian
 ■ Black
 ■ Latino
 ■ Nat Amer
 ■ Unknown



GENDER

■ Female

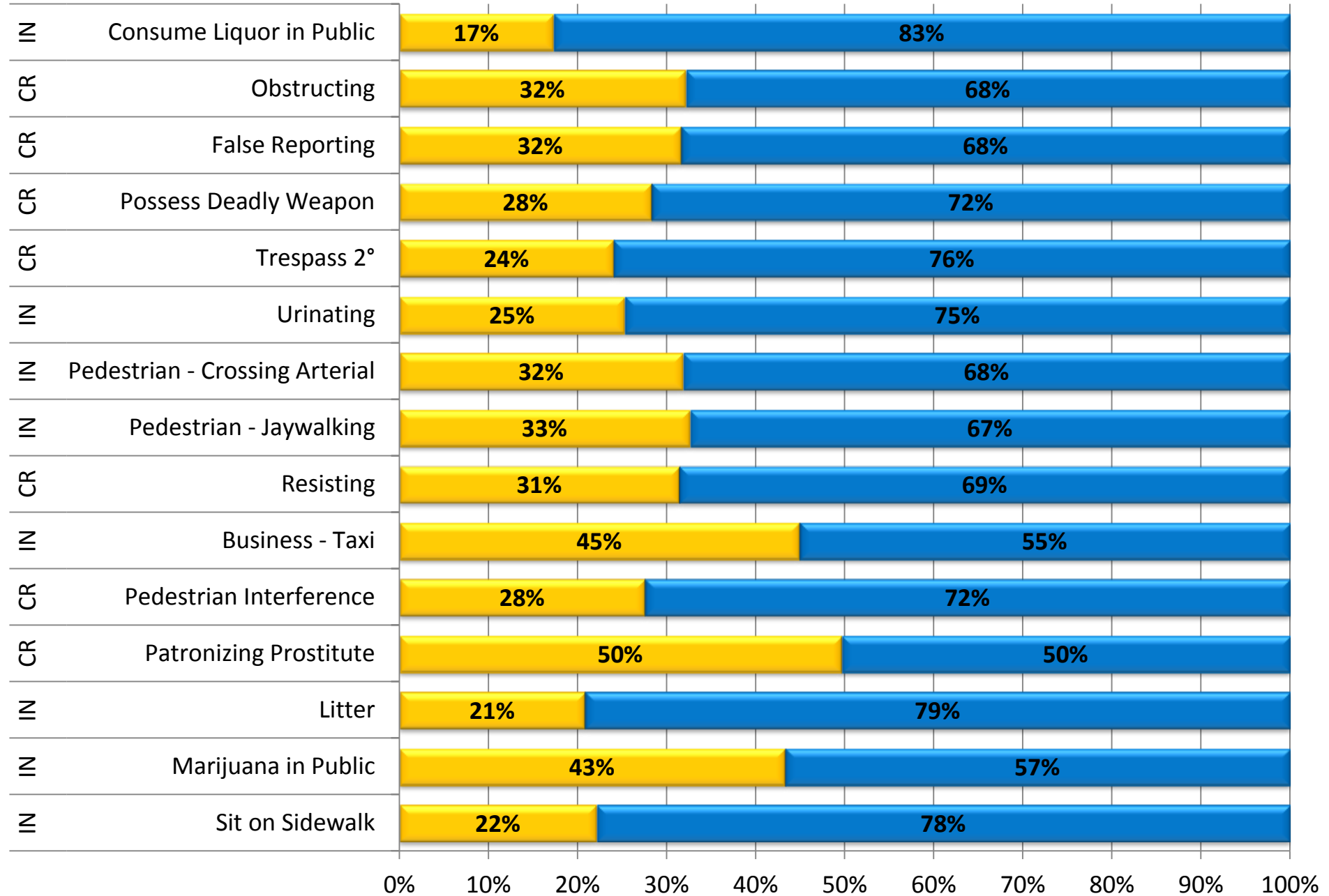
■ Male



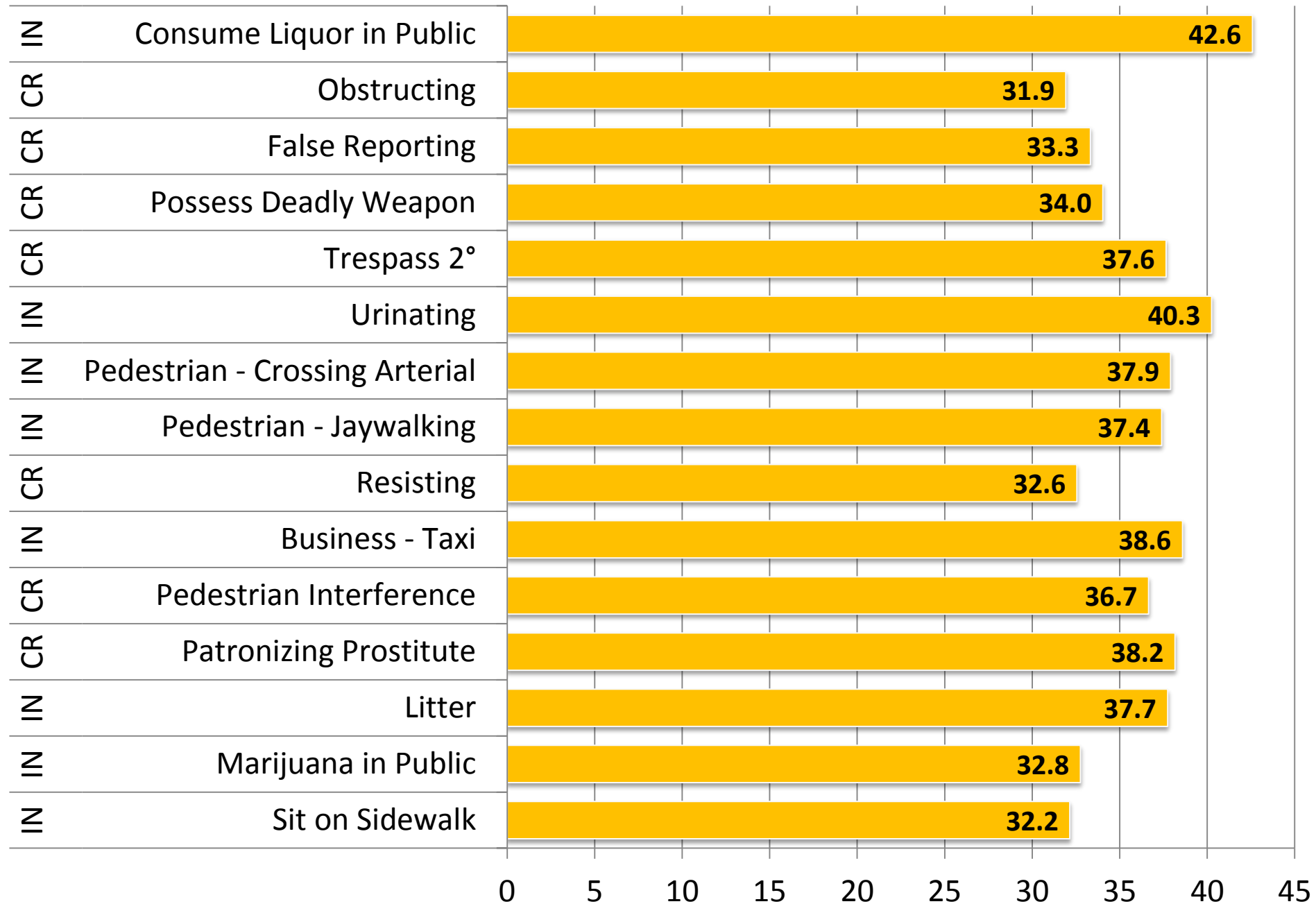
RESIDENCY

■ Other

■ Seattle Resident

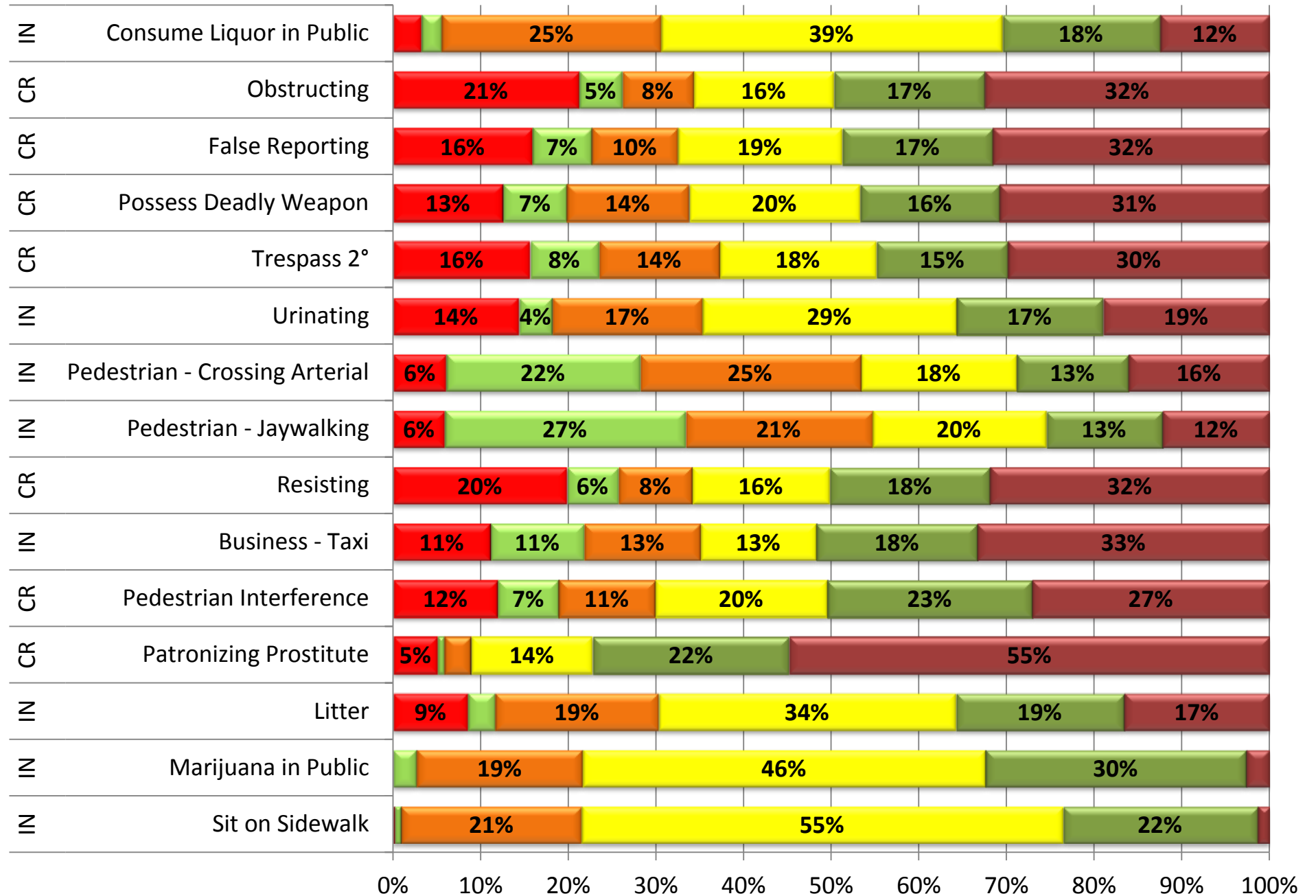


■ Average Age



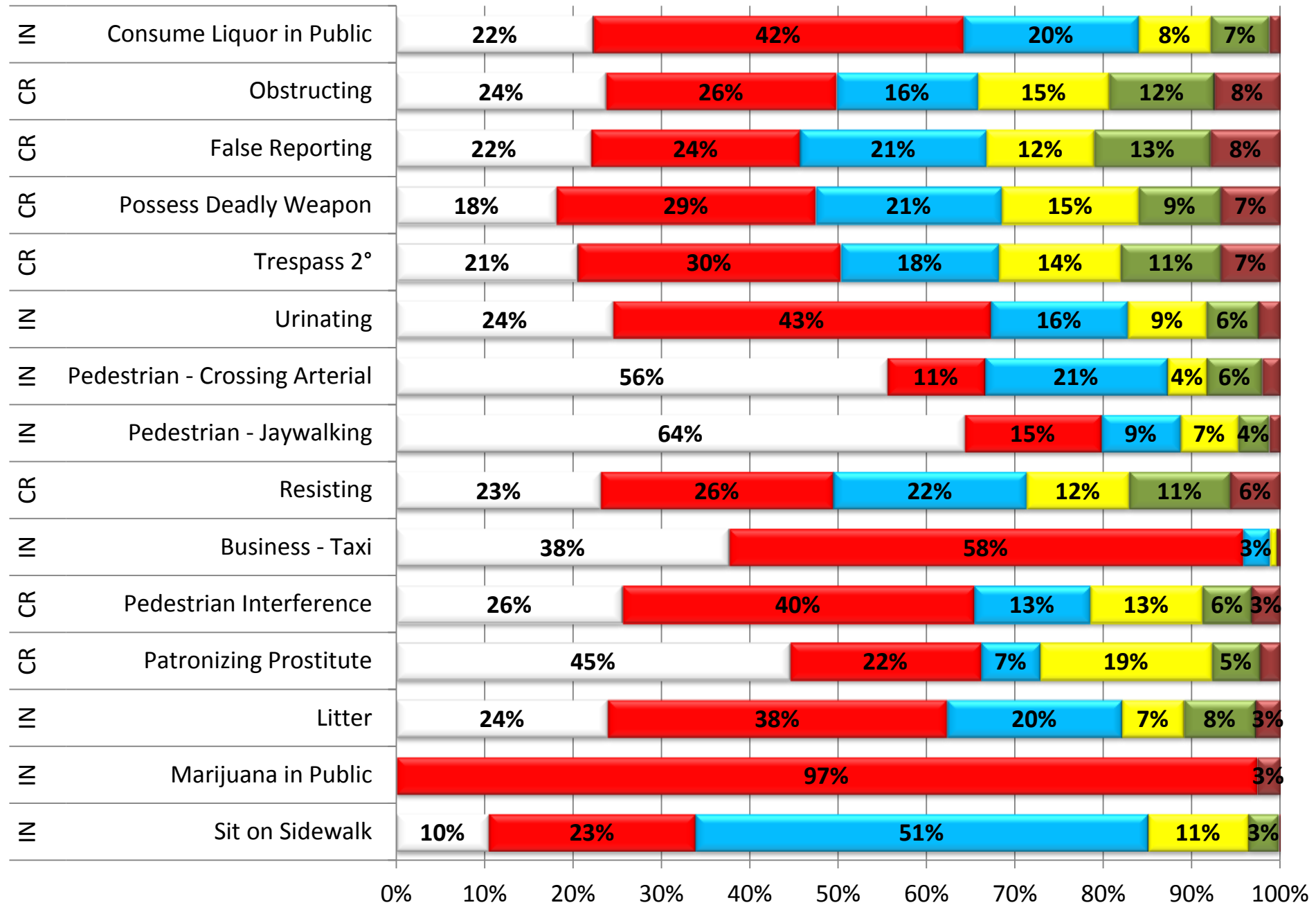
TIME

■ 1 to 4
 ■ 5 to 8
 ■ 9 to 12
 ■ 13 to 16
 ■ 17 to 20
 ■ 21 to 24



PRECINCT

Other
 West
 North
 East
 South
 SW



WATCH

■ 1st

■ 2nd

■ 3rd

■ OPS

■ Other

