



The Medina County Courthouse : Architecture, History, and Restoration

Presentation Agenda

Presentation Will be held at Medina City Hall: 135 North Elmwood, Medina, OH

5:30 PM – Welcome From CDC – Paul Becks (Medina CDC Board, Main Street Medina Board)

Synopsis : The culmination of several years of planning and work on the iconic Medina County Courthouse is nearing completion, with repairs nearly being finalized to the Clocktower. The CDC appreciates the County’s continuing commitment to this symbol of our community, and wants to share with the community what has been going on behind the scenes.

Brief Introduction – Bill Lamb (City of Medina Councilman)

5:35 - The County’s Commitment to the Courthouse - Steve Hambley (County Commissioner)

Synopsis: Extensive repairs to The County Courthouse were identified as necessary in 2010. At the time, the County was uncertain how to fund all necessary repairs. Recognizing the importance of the Courthouse to the County, City, and Square, the County has dedicated the funding to these various projects which has been occurring over several years.

5:40 – History of Courts in Medina and of Courthouse – Roger Smalley (Chairperson, Medina Town Hall and Engine House Museum)

Synopsis : Medina’s courts have evolved significantly since 1818. The original dedicated courthouse was in the building currently occupied by Whitey’s Army/Navy. In 1841, a new courthouse was completed, it was built in the federal style, and while this structure is still incorporated in the courthouse, it looked very different than it does today. Over the years, there have been many additions. Most notably, the 1870’s addition was built



in the Second Empire style, and gave the courthouse the unique Victorian look it currently has. The County courthouse was the first property in Medina to be added to the National Historic Register.

5:50 – Preservation of the Courthouse, CDC’s Involvement – Elaine Lamb (CDC Member)

Synopsis: The Medina County Courthouse is a significant asset both historically and architecturally to the City. It is a unique and shining example of courthouse architecture in Ohio, and was built in a time known to be the “Golden Age” for such buildings. Despite this, several counties in Ohio have demolished such historic courthouses due to the rising cost of maintaining these structures. The CDC has worked to maintain Medina County’s commitment to maintaining and keeping our courthouse.

6:00 – Current Restoration – Studio Techne Architects & Coon Restoration

Maintaining For the Future

Examples of Preservation Throughout Ohio

Synopsis: See attached Draft presentation. Studio Techne, a renowned preservation architecture firm, and Coon Restoration, a firm known not only for their restoration work, but for their involvement with Heritage Ohio and spurring the restoration and adaptive reuse of many buildings, will highlight examples of other projects throughout Ohio.

6:20 – Audience Q&A



Medina County Courthouse Restoration Schedule

Phase 1 – Assessment

November 2010

Leinweber Engineering & Studio Techne

Phase 1A – Emergency Shoring

December 2010

Leinweber Engineering & Studio Techne

Phase 2 – Structure Stabilization

Fall 2011

Leinweber Engineering & Studio Techne

Contractor: Quality Masonry

Phase 3 – Window Replacement & Restoration

2011-2012

Studio Techne

Contractor: Pella/Gunton & RW Clark

Phase 4 – Tower Restoration & Straightening

Fall 2013

Studio Techne

Contractor: Coon Restoration

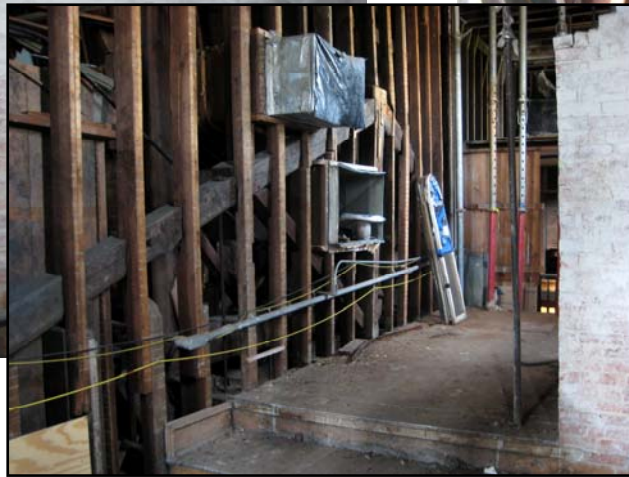
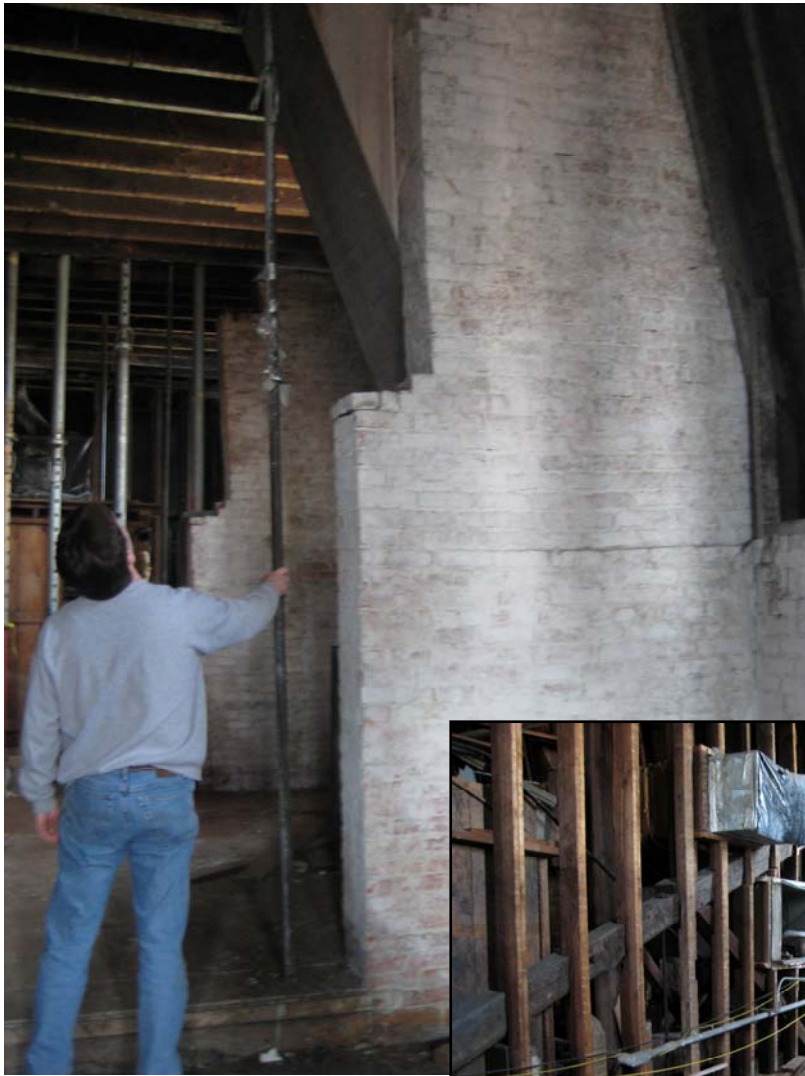
Phase 5 – Exterior Building Restoration

2014 (hopefully)



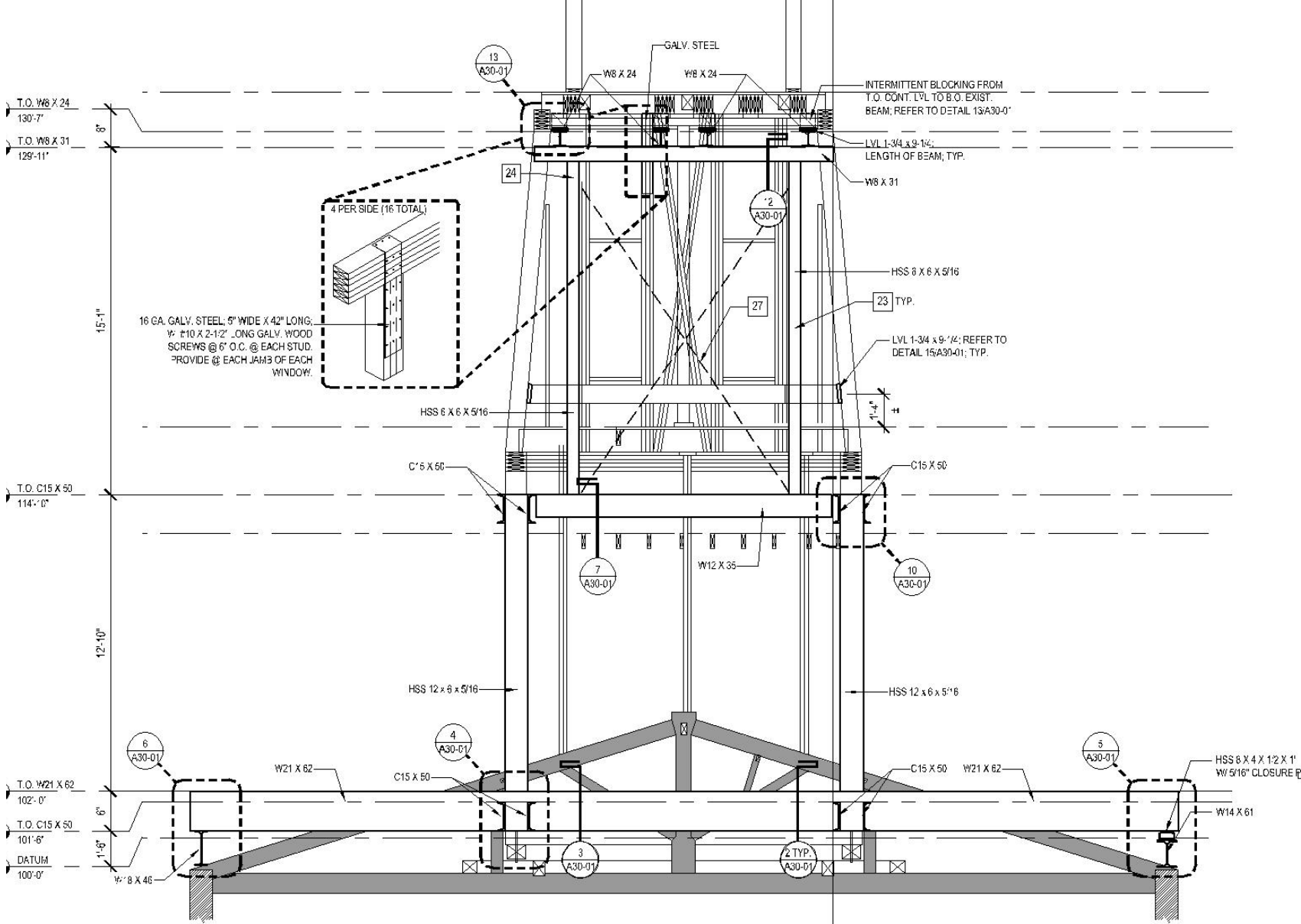
Phase 1 – Assessment

- The structure supporting the tower was failing.
- The tie rods between beams was cut.
 - Water was entering the building at numerous points
 - Wood structural elements were rotted, displaced and delaminating
 - Brick exterior wall was displaced and bricks were cracked and loose.
- The exterior elements of the tower (trim, louvers, windows, cornices, brackets, scrolls and roofing) were severely deteriorated and failing.
 - The clock mechanism and bell were working except for one clock face.
 - Squirrels, bats, pigeons and other *fauna* were calling the tower “home”.



studioTECHNE | architects

Structural Stabilization Project





Structural Stabilization Project

Thousands of pounds of steel added to shift load from 1841 trusses and 1873 wood framing to masonry walls of 1841 and 1873 structures.



Structural Stabilization Project

- Wood framing added throughout tower to supplement or replace existing framing.
- Screw-jacks added to straighten tower in later phase.

Window Replacement & Restoration



studioTECHNE | architects



Window Restoration

More than 20 windows (including the arched topped windows in the 1873 addition) restored.

- Sashes disassembled, repaired, refinished.
- Hardware repaired or replaced; Sash cords replaced
- Insulating glass added
- Sills, frames and trim repaired and refinished

Window Replacement

Replaced windows included details, moldings and extrusions to match existing window including rounded corner, detailed brick molding, narrow profile sash and muntins.

Full scale drawings of existing and proposed windows, frames and trim submitted to Historic Preservation Board for approval along with samples and color selections.



Window Replacement & Restoration



Window Replacement & Restoration



studioTECHNE | architects

Tower Restoration

The “Before” pictures – taken from 125’ crane.

These photos show the deterioration of the painted tern-coated steel roofing and decorative elements.





Tower Restoration

Wood deterioration,
roofing failures,
metal corrosion and breaks





Tower Restoration

The Materials:

Slate – multiple colors and shapes

Tern Coated Steel and Stainless Steel

- Stainless steel trim
- Roofing
- Decorative elements

Grace Ultra underlayment

Epoxy wood repairs, new sheathing,
wood framing

Windows and Louvers

EPDM roofing

Brick

Tower Restoration – Start of Construction

One step backwards before two steps forwards





Tower Restoration

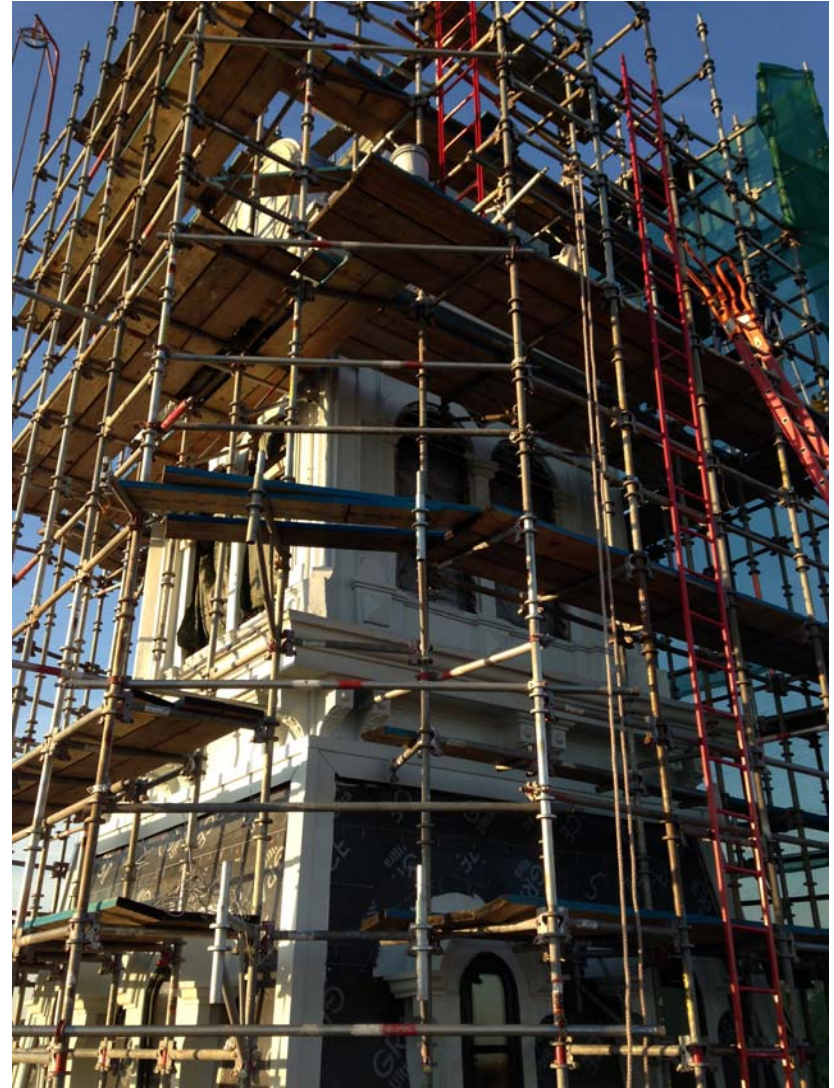
Restoration begins





Tower Restoration

Restoration begins



studioTECHNE | architects



Tower Restoration

Restoration begins

