



## CHIA SHED

a 'learning garden shed' for the Ward 1 Community Garden

Delki Dozzi Park, Greater Sudbury, Ontario, Canada

From copper ore, nickel and rock, Sudbury has grown into a diverse metropolis. Chia Shed embraces Sudbury's rich industrial history and aesthetic, whilst promoting a future of sustainability and horticulture for Ward 1.

The shed is an 'object-lesson' both in content and construction;

### layout

The shed delineates three distinct areas; a 'secure' area (1) for the storage of equipment, an 'active' area (2) for composting, filling water cans, and mixing mulch, and a 'learning' area (3) for workshops and group activities.

### integrated gardens

Two linear gardens form the east and west boundaries of the shed, built into the slag/gabion walls. A 'primitive' green roof is composed of clay pots and pop-bottle planters. As an annual communal event, participants will prepare the planters to populate the roof.

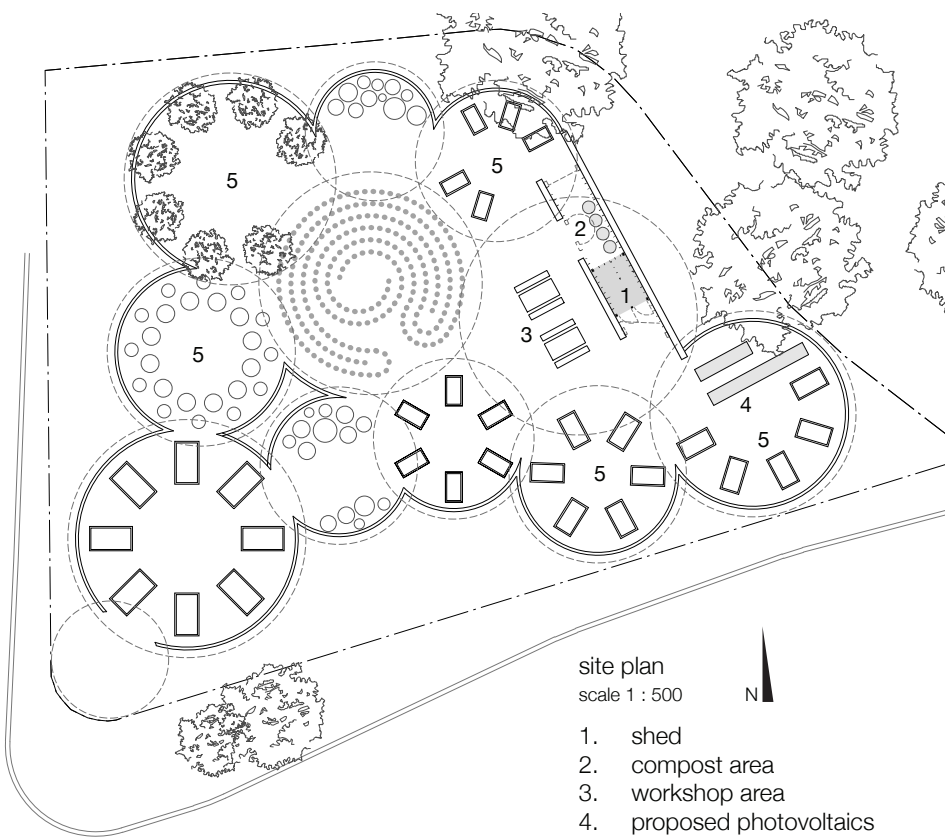
### materiality

The rustic iron/terracotta colour of the shed speaks to both the industrial heritage of Sudbury, and Ward 1's dedication to horticulture.

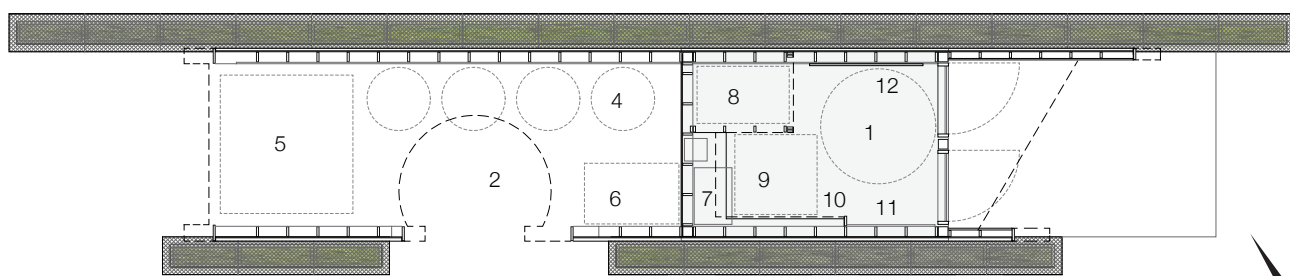
Recycled materials include the innovative use of playground tile as a cladding; each tile is the product of 1.5 recycled automotive tires.

All materials are sourced locally (within 800 kilometres, as prescribed by LEED).

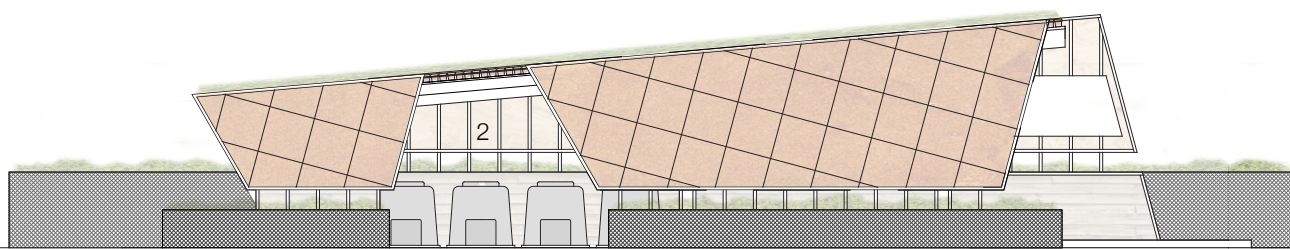
Material sources also parallel Sudbury's economic evolution; the rubber tiles come from Petrolia, whose economy was once based on oil extraction. The sunflower seed board, made from sunflower seed husks, comes from Grand Rapids, Michigan, once dependent on the automotive industry. As such, the shed becomes both a representation and propagator of economic diversification and sustainability.



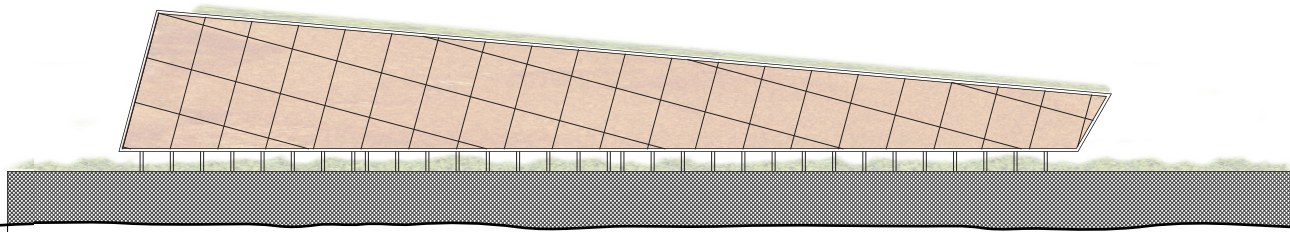
- site plan  
scale 1 : 500
1. shed
  2. compost area
  3. workshop area
  4. proposed photovoltaics
  5. future garden development



1. 'secure' shed
2. compost area
3. workshop area
4. compost bins
5. dry cover
6. tap
7. plumbing pumps
8. folding table storage with drying racks above
9. wheelbarrows
10. shelving
11. rakes, shovels
12. message board

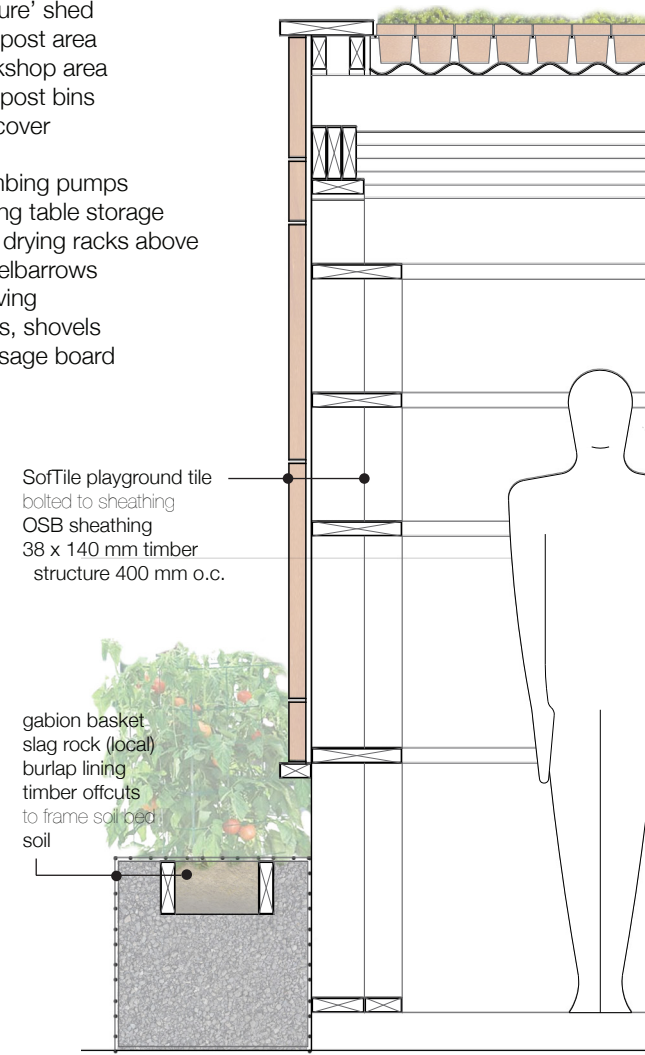


west (garden) elevation



east elevation

scale 1 : 100  
0 .5m 1m 2.5m 5m



SofTile playground tile bolted to sheathing  
OSB sheathing  
38 x 140 mm timber  
structure 400 mm o.c.

gabion basket  
slag rock (local)  
burlap lining  
timber offcuts  
to frame soil bed  
soil

scale 1 : 20  
0 .1m .5m 1m