

For pictures and video go to www.army.mil/jrcf



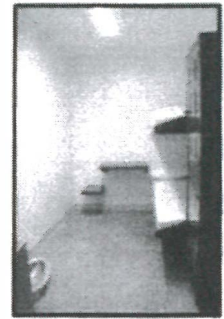
Joint Regional Correctional Facility

The Midwest Joint Regional Correctional Facility (JRCF) is the newest Department of Defense (DoD) correctional facility. It is a state-of-the-art, 464 bed, medium/minimum custody facility with a 48-bed special housing unit built to comply with American Correctional Association Standards. It officially opened on October 1st, 2010 and received its first military prisoners four days later. The mission of the JRCF is to provide pretrial confinement and posttrial incarceration for U.S. military prisoners sentenced to up to five years of confinement. The JRCF staff conducts correctional and treatment programs in order to maintain good order and discipline and reduce recidivism upon release from confinement. The facility is located adjacent to the United States Disciplinary Barracks (USBDB); together they form the Military Correctional Complex (MCC) at Fort Leavenworth, Kansas. The MCC is similar to a Federal Bureau of Prisons' Federal Correctional Complex in that it clusters several distinct correctional facilities of varying security levels in one location that share services and manage efficiencies in manpower and logistics.

The JRCF staff includes a team of mental health professionals, including a psychiatrist, psychologist, social workers, and behavioral science noncommissioned officers with experience in addressing the needs of military personnel in pre and posttrial confinement. The facility's Directorate of Operations is responsible for security, safety, housing unit operations, military police investigations and physical security. The JRCF also has its own military facility commander who reports to the 15th Military Police Brigade Commander/MCC Commander, who leads a team of approximately 1,200 trained and experienced Corrections Specialists and Soldiers.

Within the JRCF, there are six general population housing units capable of holding a total of 464 prisoners. All of the six general housing units are of the direct supervision design. The correctional specialist's control panel is located in the housing unit common area. Five of the general housing units are two levels with 40 modular cells. Each of these general housing units has the capability of housing 80 prisoners each. The sixth general housing unit is an open bay design with 32 double bunks capable of housing 64 minimum security prisoners. Each housing unit has an open center containing pay phones, tables, chairs, and televisions.

Each cell is at least 80 square feet, of which 35 square feet is unencumbered, usable space not taken up by furnishings or fixtures. All cells have a sleeping surface and mattress, a writing surface and seat, storage for personal items, and adequate storage space for clothes and personal belongings. Lighting in all cells is at least 20 foot-candles at desk level and in personal grooming areas, and prisoners have access to natural light by means of an opening or a window of at least three square feet between the cell and an adjacent space.

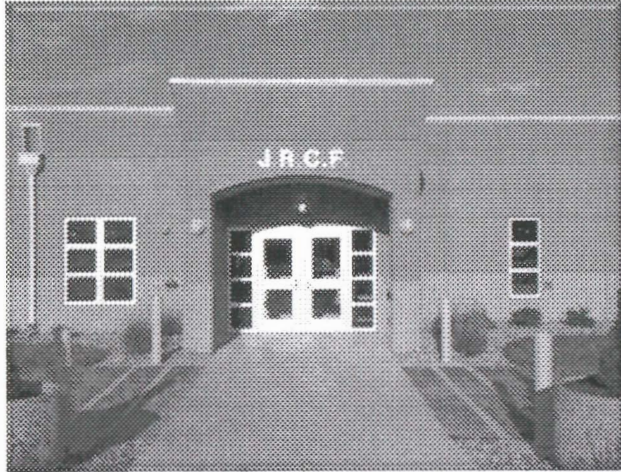


The Special Housing Unit (SHU) is a multi-floor design with 48 individual cells. The correctional specialist's control panel is located in a secure observation booth. There are four areas of four cells each designated for pretrial prisoners awaiting trial. This is where PFC Manning will be located. The pretrial living area and daily activities are separate from the general population. Pretrial prisoners are also segregated from general population prisoners for all meals and recreation. However, pretrial prisoners, like PFC Manning, are able to interact with each other in a common area just outside their individual cells. Pretrial prisoners also receive 3 hours of recreation daily and are able to watch television, read or engage in other personal activities while in their housing unit. During pretrial confinement, pretrial prisoners have access to religious support, medical and mental health care, personal and legal visitation, phone calls, and are authorized to write and receive mail daily.



The JRCF occupies approximately 40 acres of property with a 250,000 square foot facility consisting of five buildings. The exterior walls of the facility were built using 1,488 precast concrete panels. Outside the secure perimeter of the fence is an administrative building, a utility building and the MCC warehouse. Inside the secure perimeter is a vehicle access security building and the main multi-purpose building. The main building is divided into multiple zones consisting of legal, food service, medical/dental clinics, education, chapel, prisoner services, visitation, vocational training, library, gymnasium, laundry, administrative offices and the general population housing units. There is an open air central recreation yard consisting of a softball field, two full sized basketball courts, a handball court, weight pad with eight stack weight systems, and a paved running track, all with exterior lighting. The perimeter fence consists of two 12 foot chain link fences, topped with wire and an intrusion detection system monitored from the central control. The perimeter is illuminated by security lighting and monitored by CCTV and roving security patrols.

Joint Regional Correctional Facility



Ft. Leavenworth, Kansas

UNCLASSIFIED



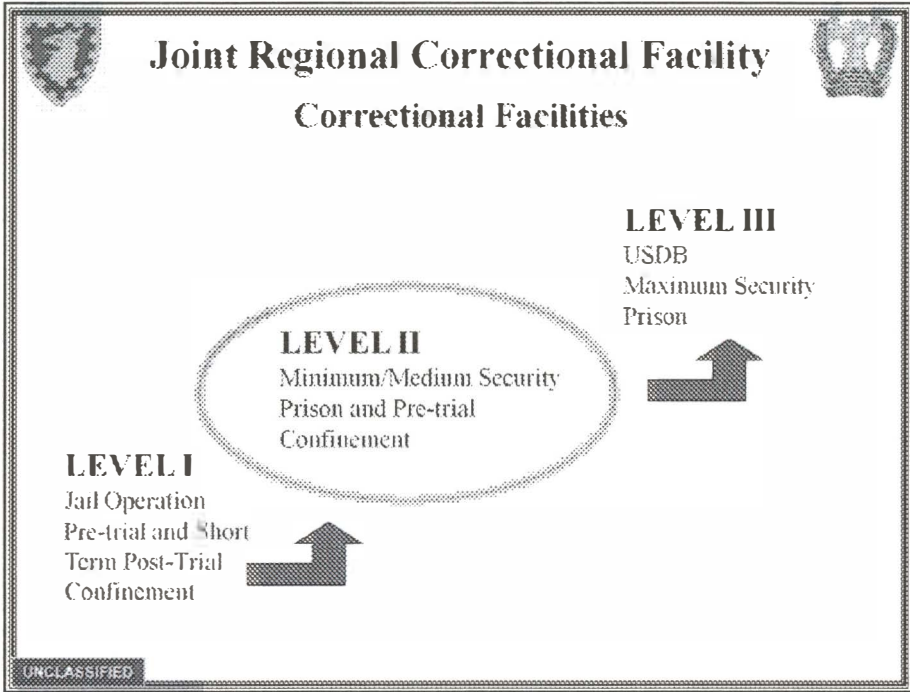
Joint Regional Correctional Facility



DOD Corrections Authority

- Title 10 USC, Chapter 47, UCMJ
- Title 10 USC, Chapter 48, Sections 801-940
- DOD Directive 1325.4
 - Confinement of Military Prisoners and Administration of Military Correctional Programs and Facilities
- DOD Instruction 1325.7
 - Administration of Military Correction Facilities and Clemency and Parole Authority
- AR 190-47, The Army Corrections System

UNCLASSIFIED

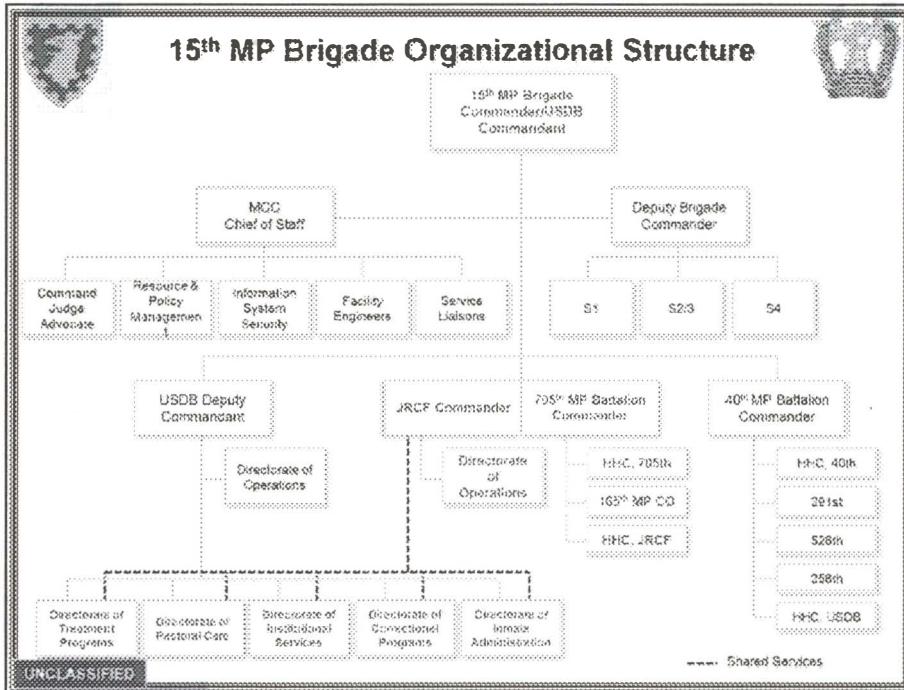




Joint Regional Correctional Facility Mission

The JRCF mission is to provide pretrial confinement and post-trial incarceration for U.S. Military inmates sentenced to up to five years of confinement. The JRCF staff conduct correctional and treatment programs in order to maintain good order and discipline and return productive Soldiers/citizens upon their release to military or civilian environments.

UNCLASSIFIED





Joint Regional Correctional Facility Treatment Programs



Health Clinic:

- Reception physical (health needs)
- Daily sick call/minor procedures
- Audiology booth
- Dental Clinic
- Laboratory
- Referral to installation/local specialist

Assessment Division:

- Conducts archival research
- Assesses internal and external risk
- Develops inmate management action plan (links classification to risk assessment)

Mental Health Division:

- Conducts psychometric tests to assess inmate functioning
- Treats all mentally ill inmates
- Coordinates psychiatric services

Rehabilitation Division (Post Trial):

- Conducts treatment groups
 - Case management group
 - Chemical abuse and addiction program
 - Assaultive offender group
 - Sex offender treatment program/sex offender maintenance group
 - Anger management group
- Coordinates self growth programs
 - Alcoholics Anonymous
 - Narcotics Anonymous

UNCLASSIFIED



Joint Regional Correctional Facility Pastoral Care



Religious Program:

- Worship services
- Religious education
- Religious classes and meetings
- Facilitate faith support groups
- Support over 26 different religions

Religious Media Room:

- Books
- Videos

Counseling:

- Religious preferences
- Individual

Other Support:

- Volunteers
- Music
- Education
- Admin Segregation Checks

UNCLASSIFIED



Joint Regional Correctional Facility Institutional Services



Mailroom:

- Screening (in/outgoing)
- Personal property

Dining Facility:

- Inmate detail
- DFAC advisory counsel
- Daily operations

Funds Management:

- Telephone
- Personal property
- Personal finances
- Health and comfort items

Laundry:

- Inmate detail
- Personal clothing/bedding

Inside/Outside Ground Maintenance:

- Inmate detail
- Area beautification

Phone Services:

- Account management

UNCLASSIFIED



Joint Regional Correctional Facility Correctional Programs



Work Opportunities:

- Barber apprenticeship
- Textile repair

Education:

- Academic skills training
- Adult basic education assessment
- Independent study courses
- External degree completion

Library:

- Law
- Leisure

Pre-Release:

- Resume
- Job Search
- Reintegration

Recreation:

- Indoor
 - Basketball
 - P90X
 - Nautilus
 - Volleyball
 - Ping pong
- Outdoor
 - Soccer
 - Handball
 - Running
 - Fixed weights

UNCLASSIFIED



Joint Regional Correctional Facility Administration



Correctional Treatment File:

- Administrative information
- Disciplinary
- Staff communication

Parole and Clemency Boards:

- Post trial only

Victim/Witness:

- Communication

Custody Classification Boards:

- Initial
- Annual
- Unscheduled

Visitation:

- Program management
- Request

In/Out Processing:

- Sentence computation
- Transportation
- Finance
- Unit coordination
- Temporary release

UNCLASSIFIED



Joint Regional Correctional Facility Operations



Security and Control:

- Physical security
- Transportation support

Policy and Procedures:

- Guide for inmates
- Standard procedures
- Regulations

Daily Operations:

- Reception operations
- Special Housing Unit (SHU) operations
- Housing unit counselors
- Watch commander oversight

Discipline:

- Investigation section
- Recommends disposition

Inmate Advisory Counsel:

- Monthly
- Inmate opportunity to influence change

UNCLASSIFIED



Joint Regional Correctional Facility Reception Operations



Arrival:

- Verify confinement order
- Inventory property
- Photo and fingerprint

Additional:

- Next of kin notification
- Establish funds account
- Establish visitation list
- Establish call list

Medical:

- Mental health assessment
- Physical health assessment
- Dental health assessment

Integration:

- Classes
- Rule book

Risk Assessment:

- Internal and external
- Management program
- Initial classification

UNCLASSIFIED



Joint Regional Correctional Facility Pre-Trial (only) Daily Schedule of Calls

- 0500 First Call
- 0515-0545 Breakfast/Medication Call
- 0650-1120 Work Call (Pre-Trial Housing Area Only)
- 1120-1150 Lunch/Medication Call
- 1400-1500 Outdoor Recreation
- 1550-1620 Dinner/Medication Call
- 1630-1730 Library Call
- 1740-1840 Indoor Recreation
- 1900-2100 Visitation
- 2115-2120 Medication Call
- 2205 Lockdown

UNCLASSIFIED



Firm but Fair
with
Dignity and Respect

UNCLASSIFIED