

How to explain the London success story?

Chris Cook, FT

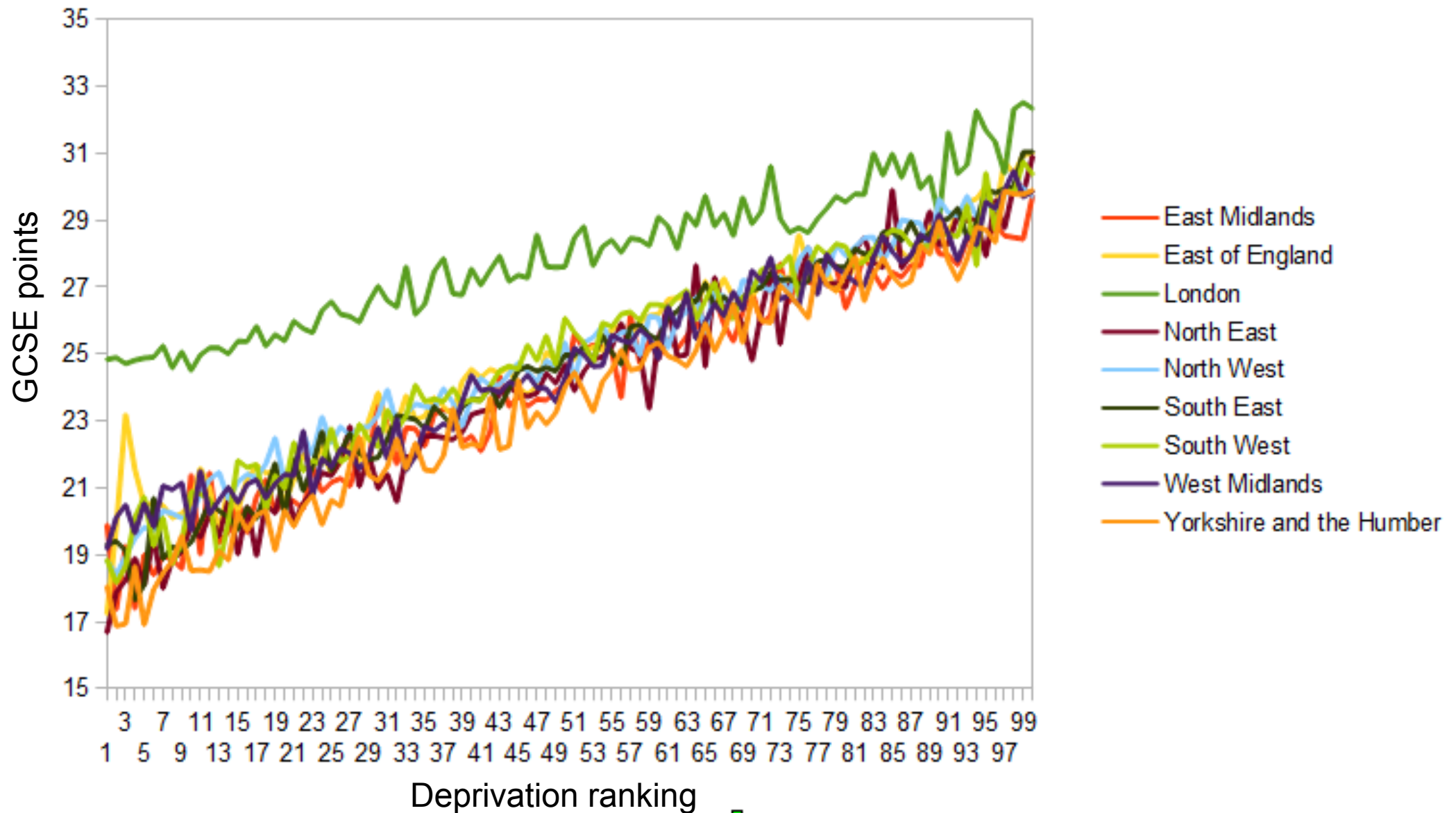
Three quick concepts

1. The “FT score” – we allocate each child a score. Kids get 8 points for an A* down to one for a G. We add up the score for English, maths and their three best other subjects.
2. IDACI – an index of poverty which measures how poor the neighbourhood in which a child lives is.
3. “Regression” – we are dealing with moving populations, changing intakes etc. Think of a regression as a technique that allows us to discern the impact of any one of those things

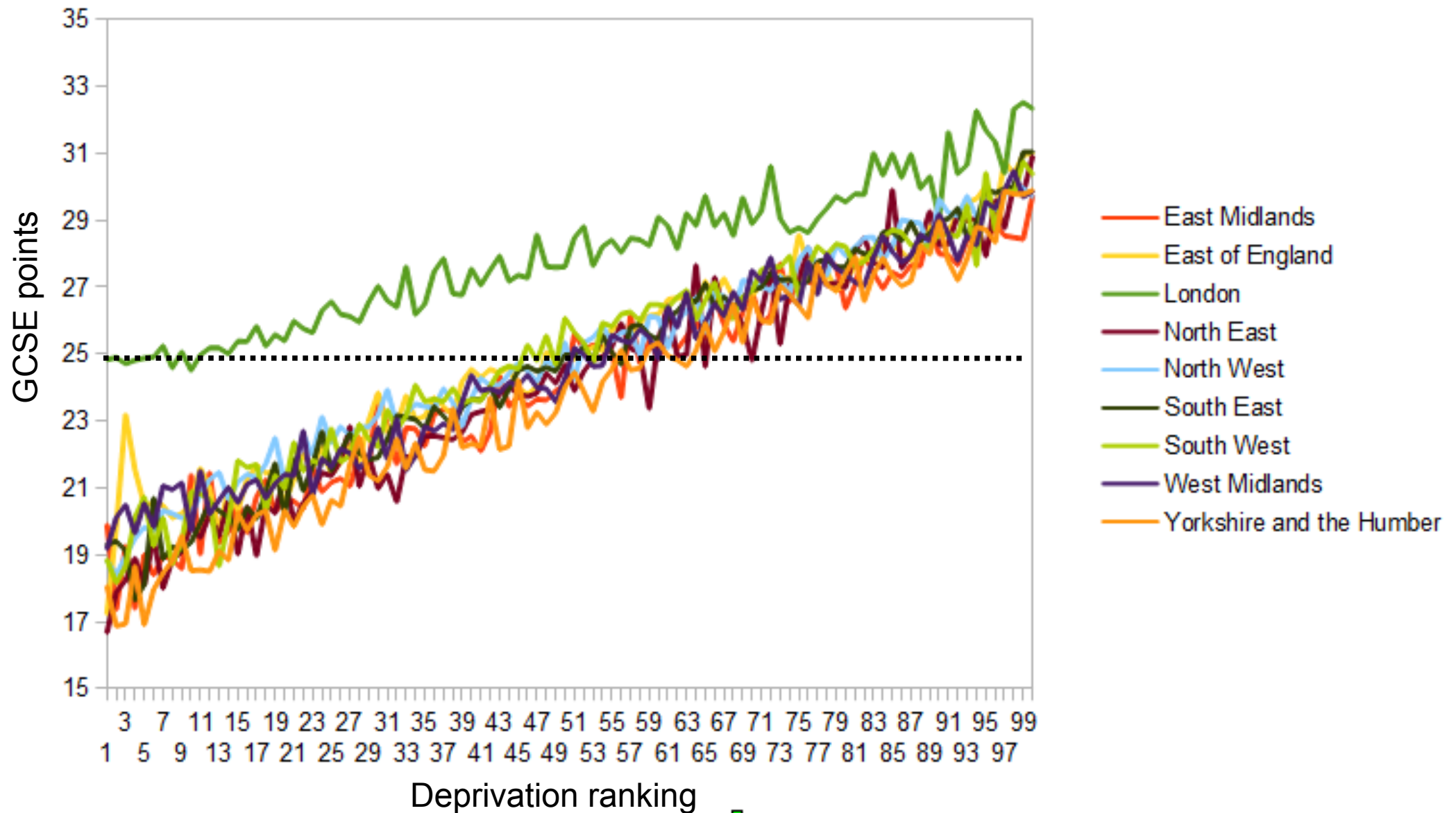
Three quick clichés

1. Schools still aren't good enough.
2. Poor children are still too far behind.
3. It's not either/or, it's both/and.

The London advantage...



...gives the city's kids a *big* lead

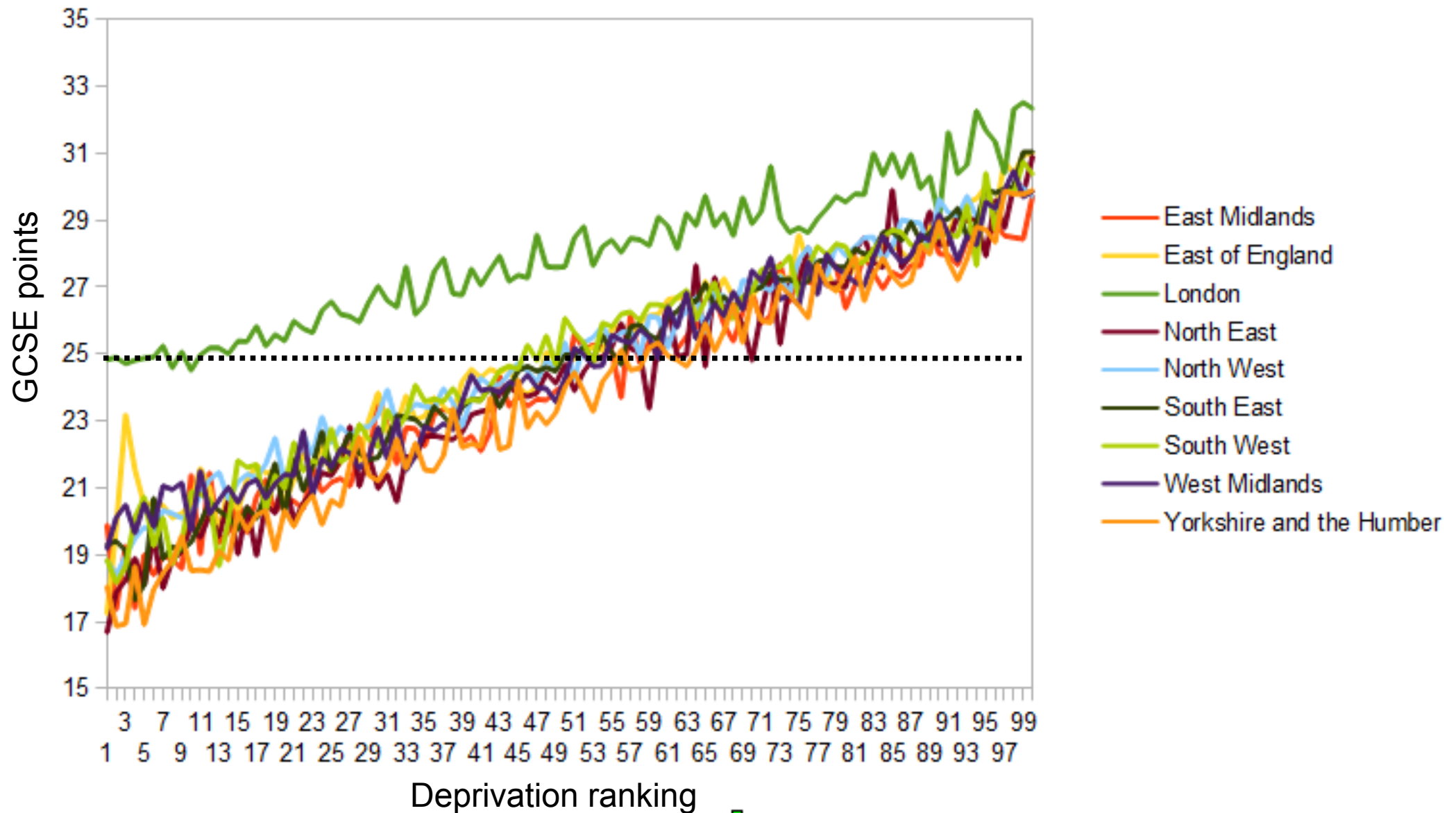


Adjusted for everything...

Region	Gap with the East Midlands
East Midlands	0.000
West Midlands	0.400
East of England	0.700
North East	0.222
North West	0.813
Yorkshire & the Humber	-0.391
South West	0.876
South East	0.811
London	3.800

This is the change you can expect in a child's FT score if you adjust for everything else, and just change where they live...

The line is also flatter in London

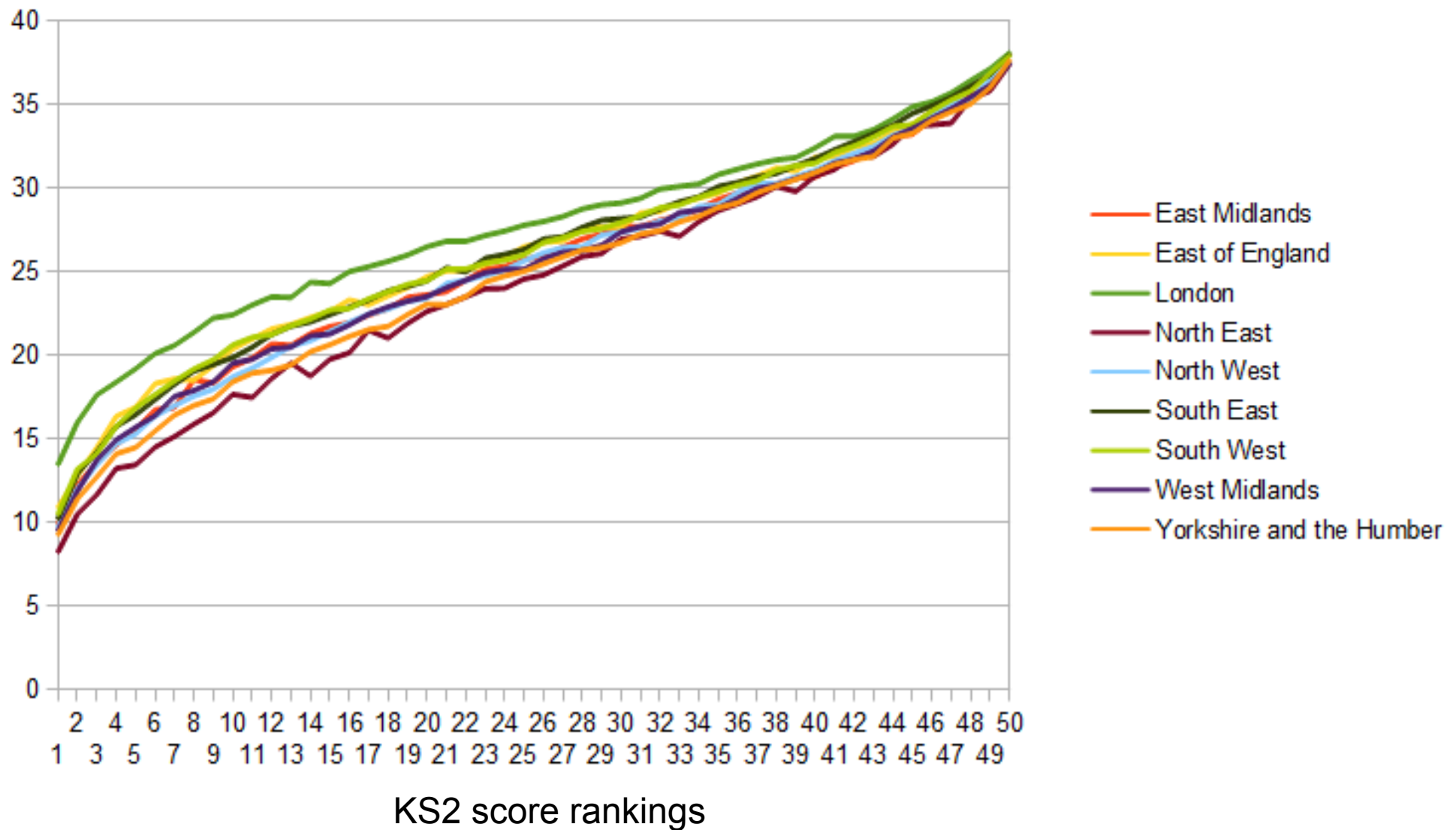


...meaning the city is also more equal

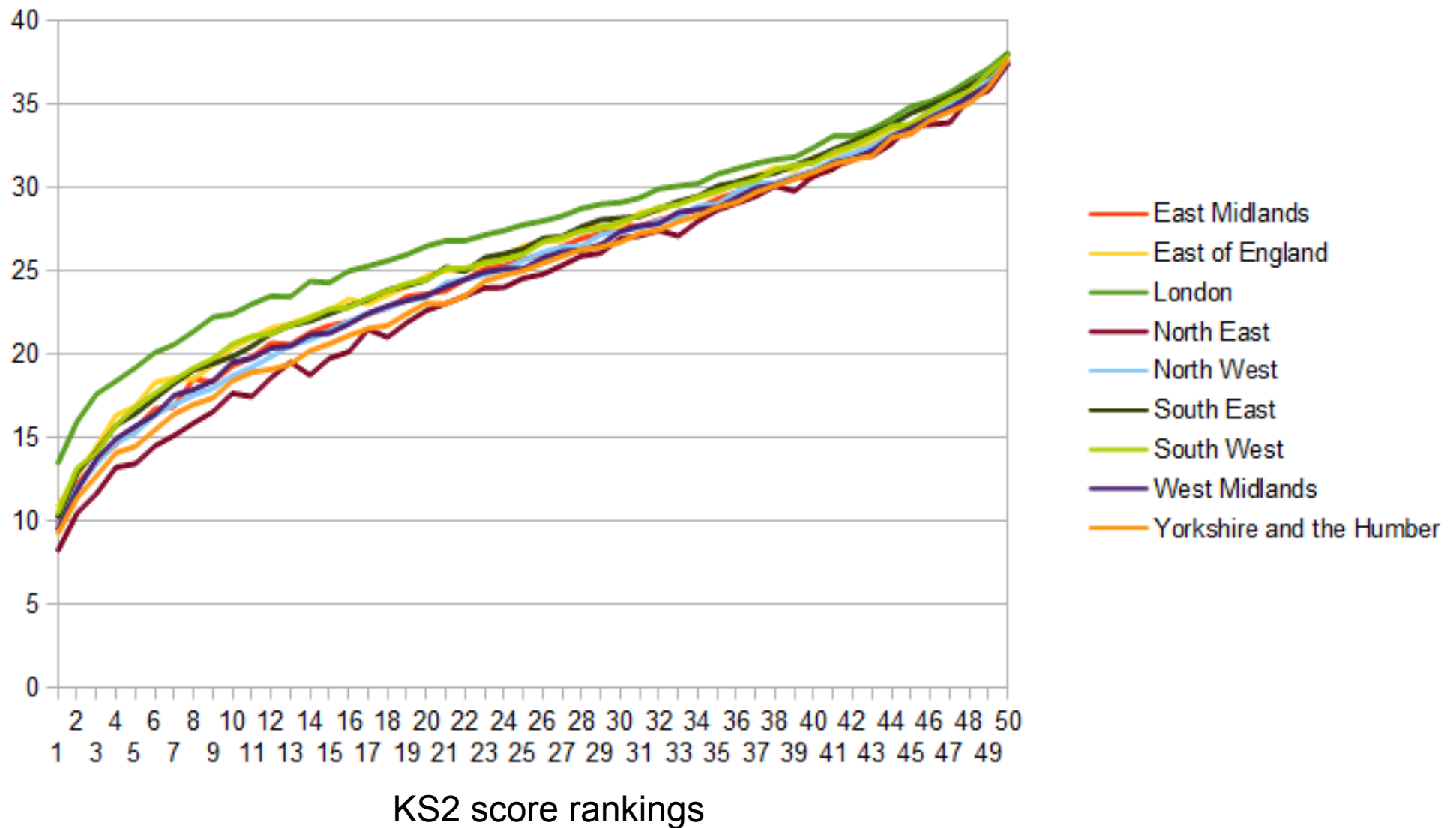
Region	Gradient
East Midlands	0.105
West Midlands	0.101
East of England	0.105
North East	0.119
North West	0.106
Yorkshire & the Humber	0.118
South West	0.104
South East	0.113
London	0.060

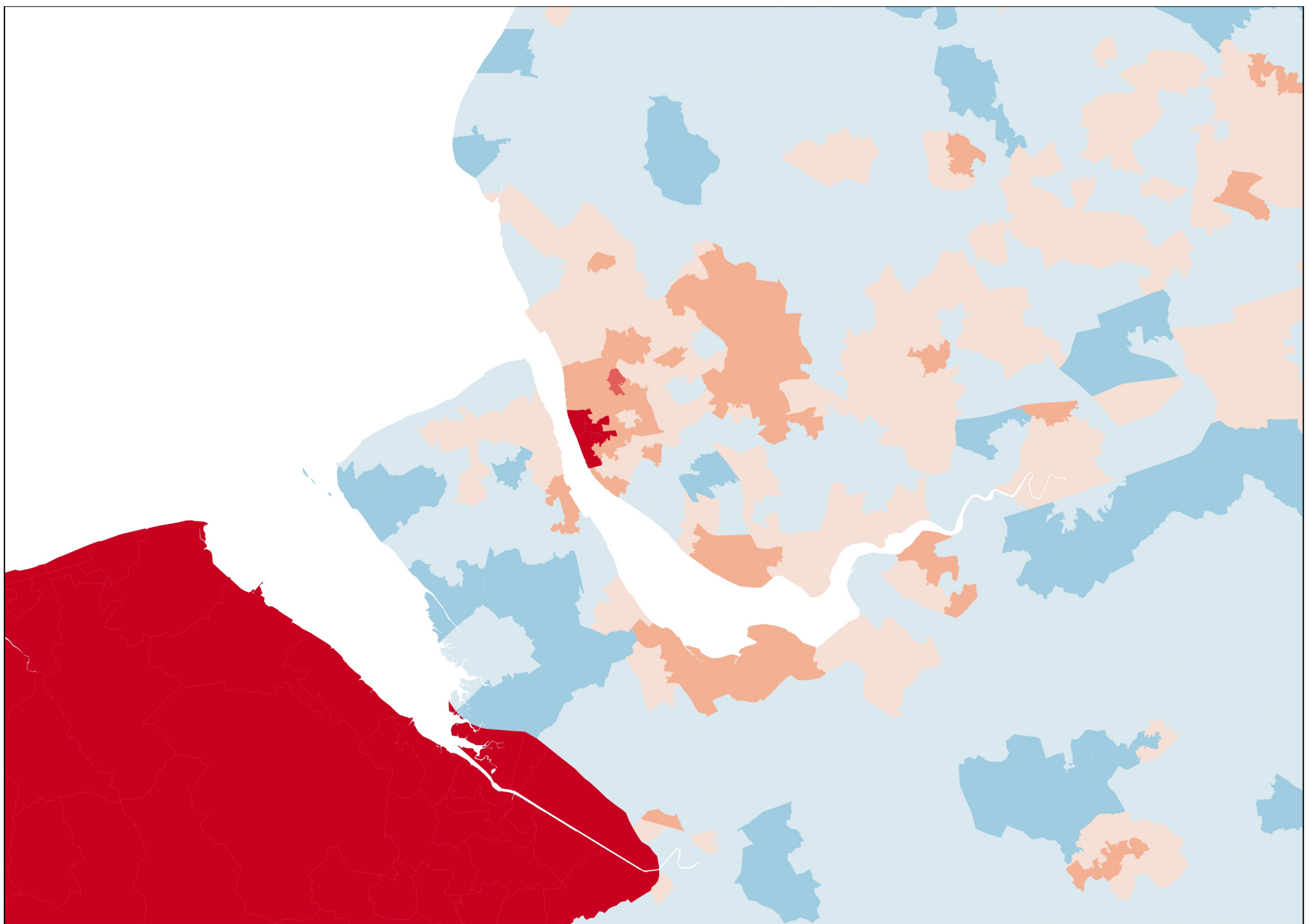
This is the gradient on the line in the previous slide. A shallower line means more equal results

London best for children starting secondary school behind...

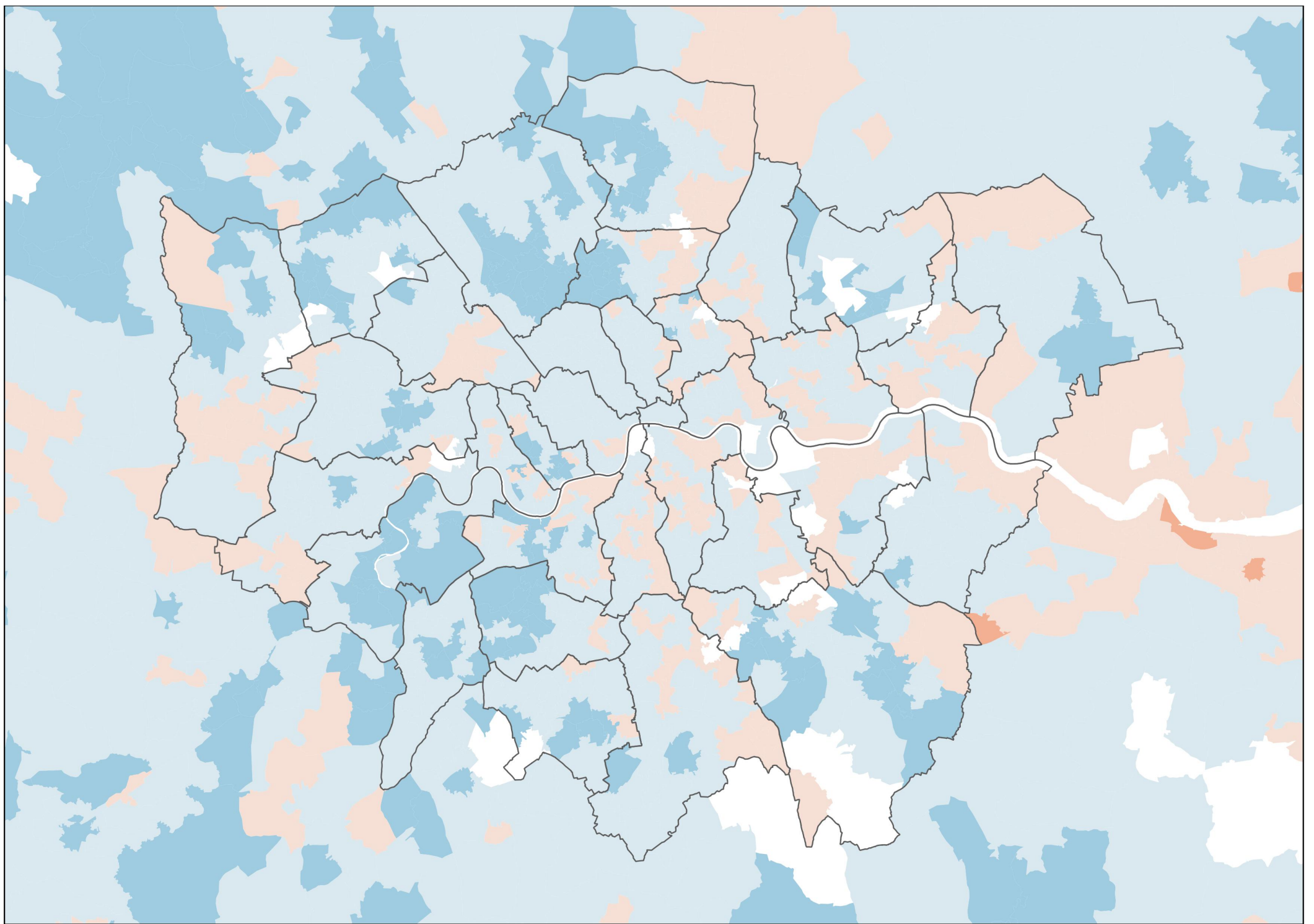


**...but is also the top school region
for high achievers**



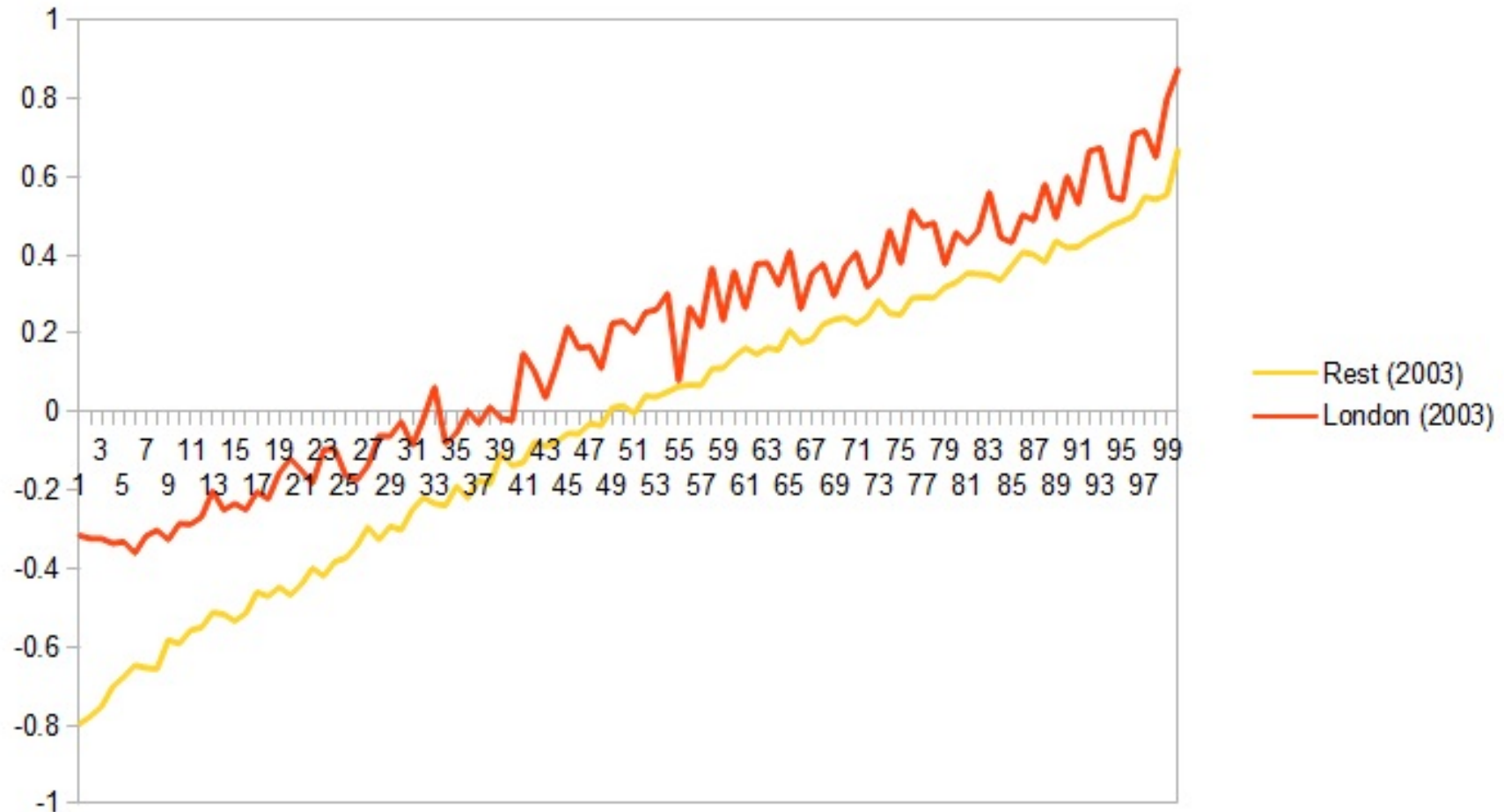


How Liverpool looks. Red/blue areas are below/above national average, darker means by more.



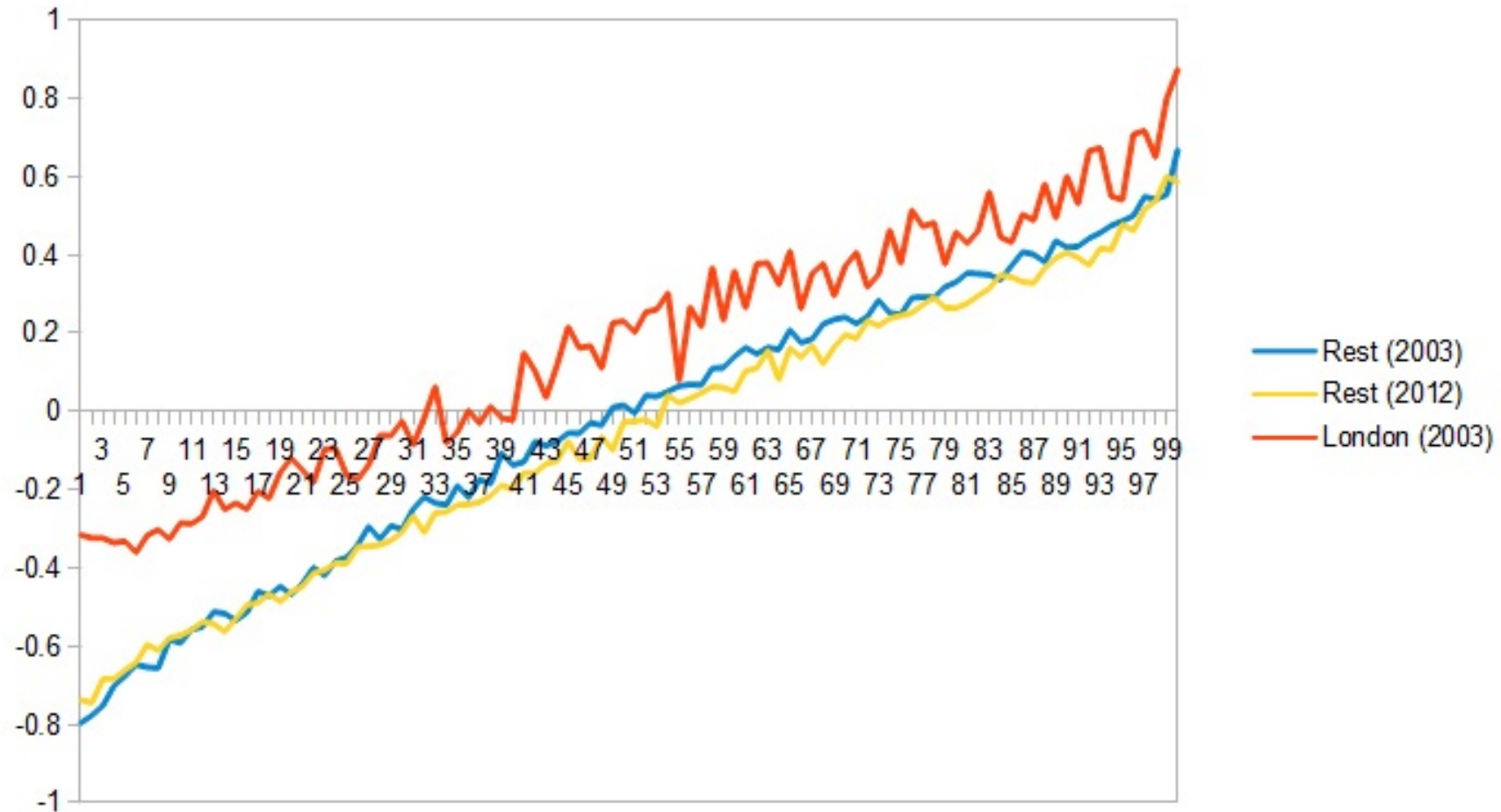
London, using the same scale. No “dark red” (meaning areas below 15 FT points)

London has long been ahead...

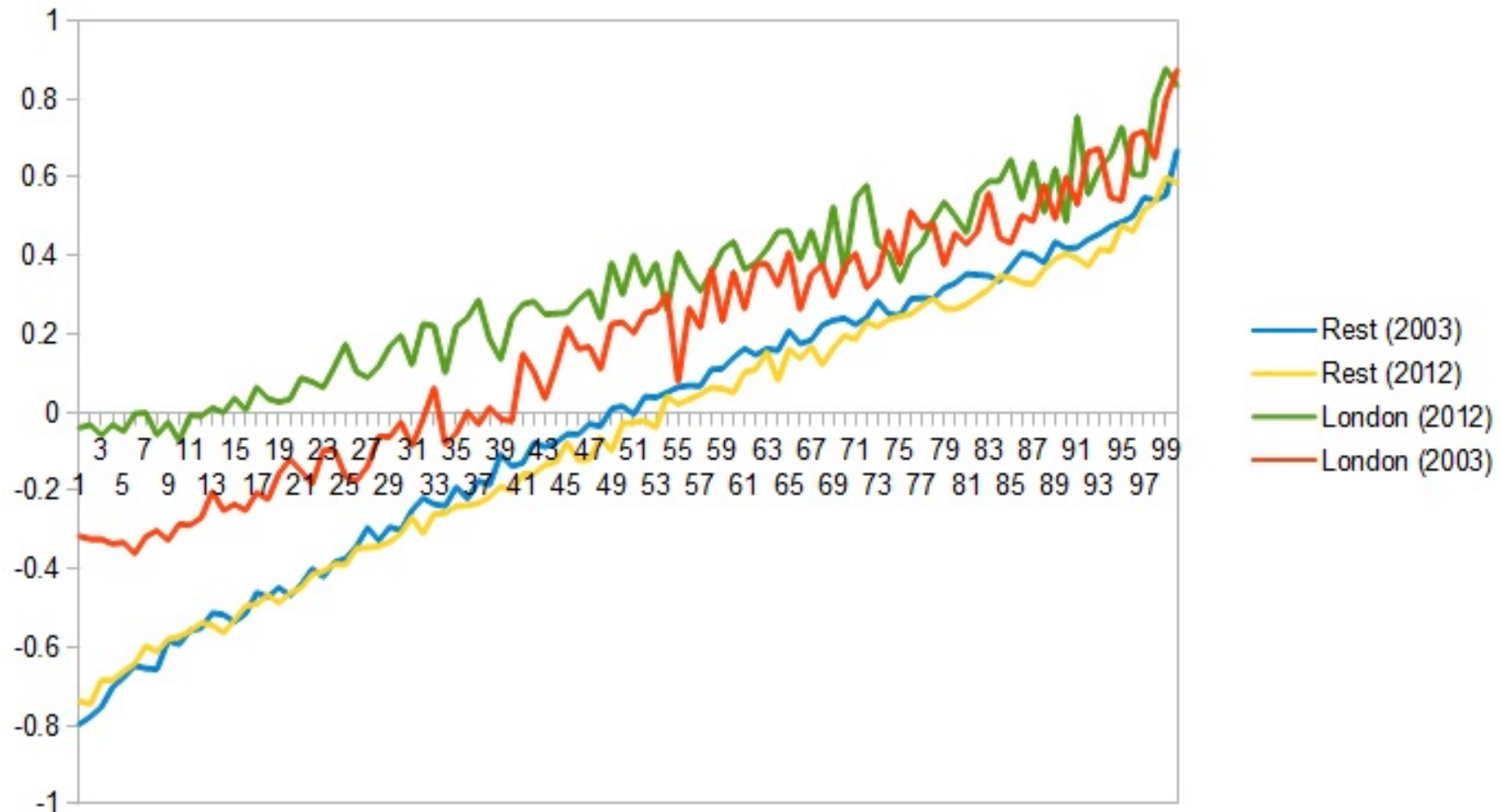


NB – based on FT score, but scale changed because it has been transformed to deal with grade inflation

**...but while there's been little
change elsewhere...**



...London has pulled away



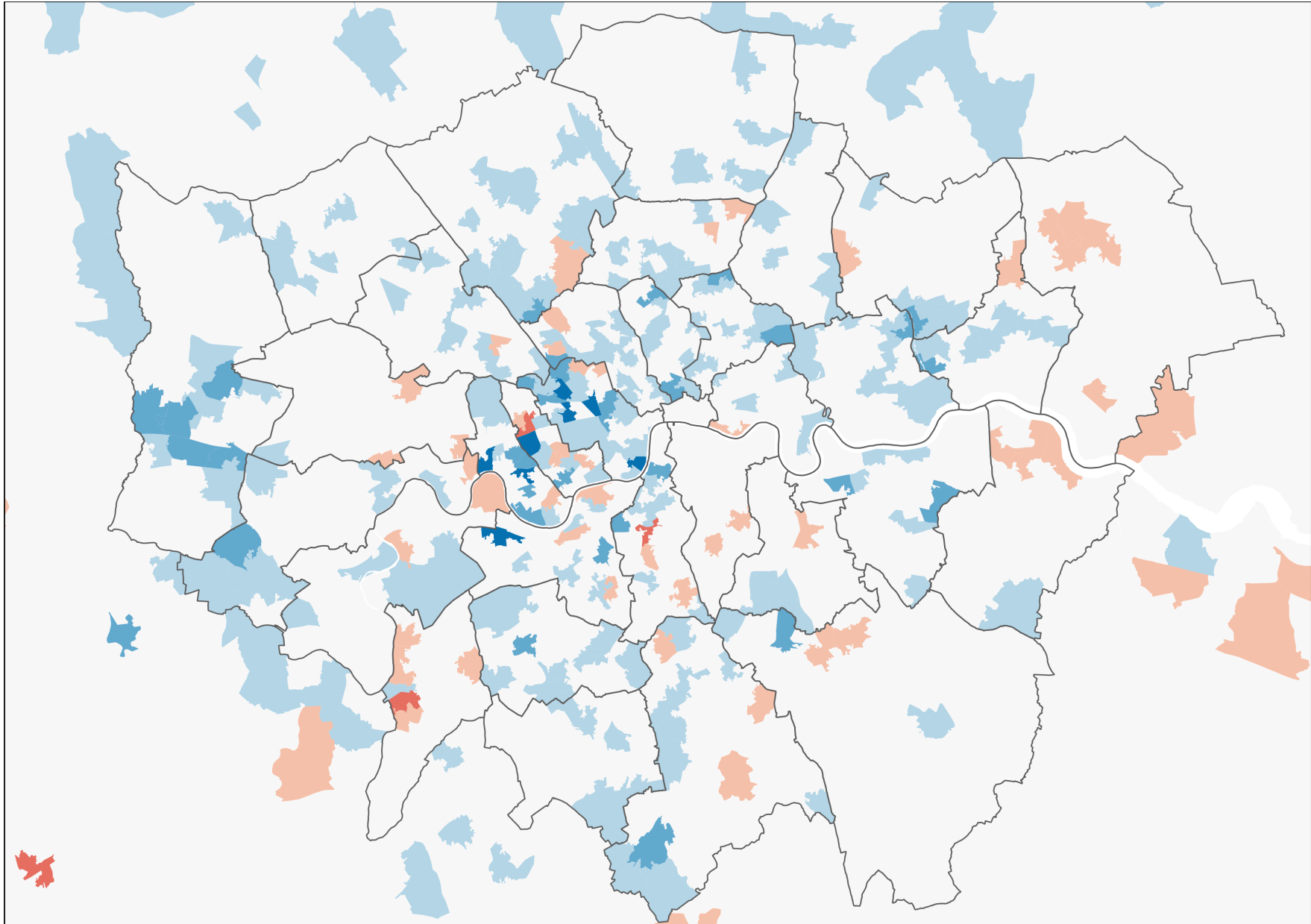
Best performing boroughs (by residence of pupils, including academies)

- Westminster (up from 10th)
- Hackney (up from 11th)
- Hammersmith (up from 5th)
- Newham (up from 6th)
- Camden (down from 2nd)
- Tower Hamlets (down from 3rd)
- Islington (up from 21st)

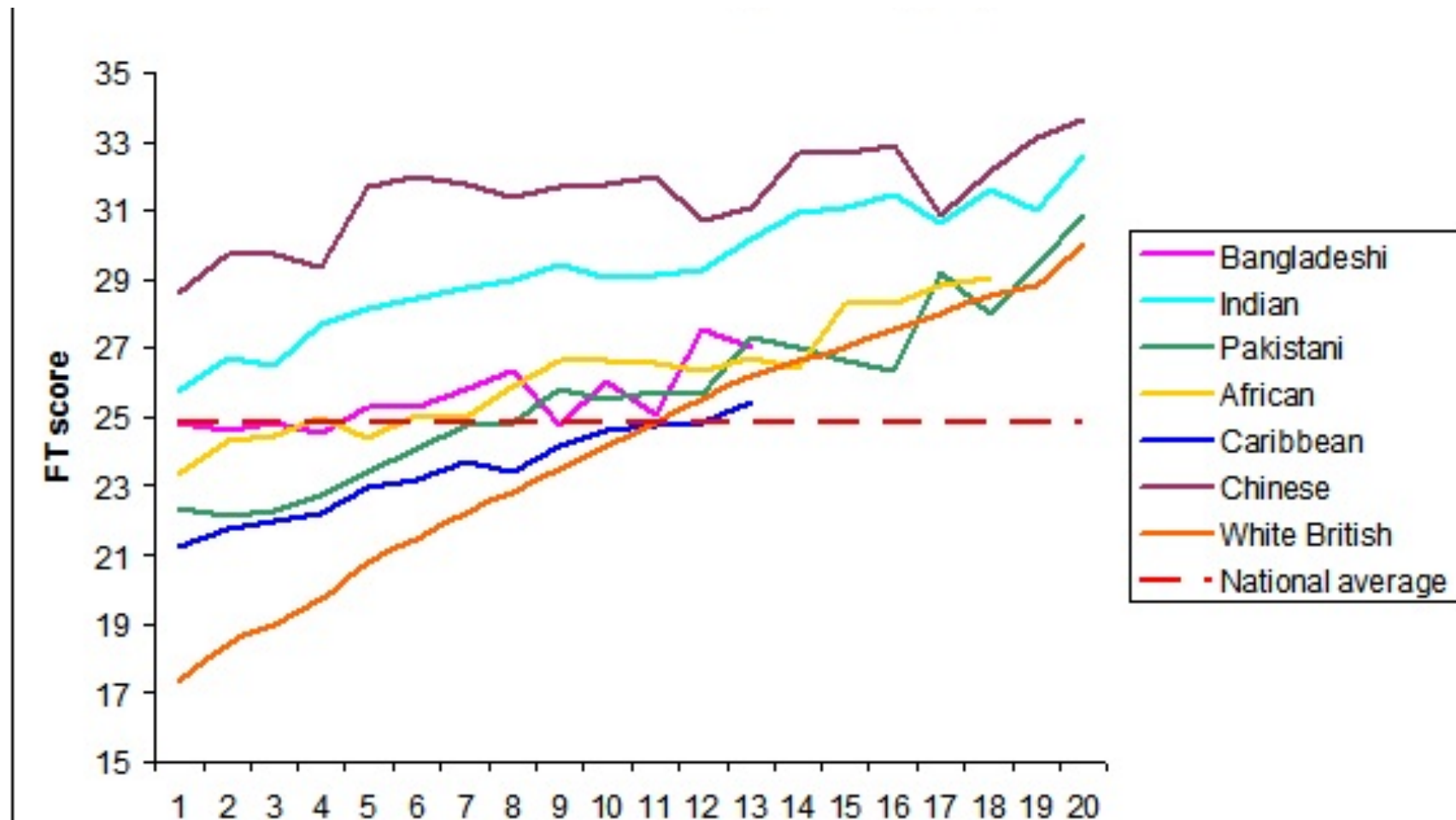
After adjusting for pupil composition.

But improvement has not occurred evenly, even in high performing boroughs

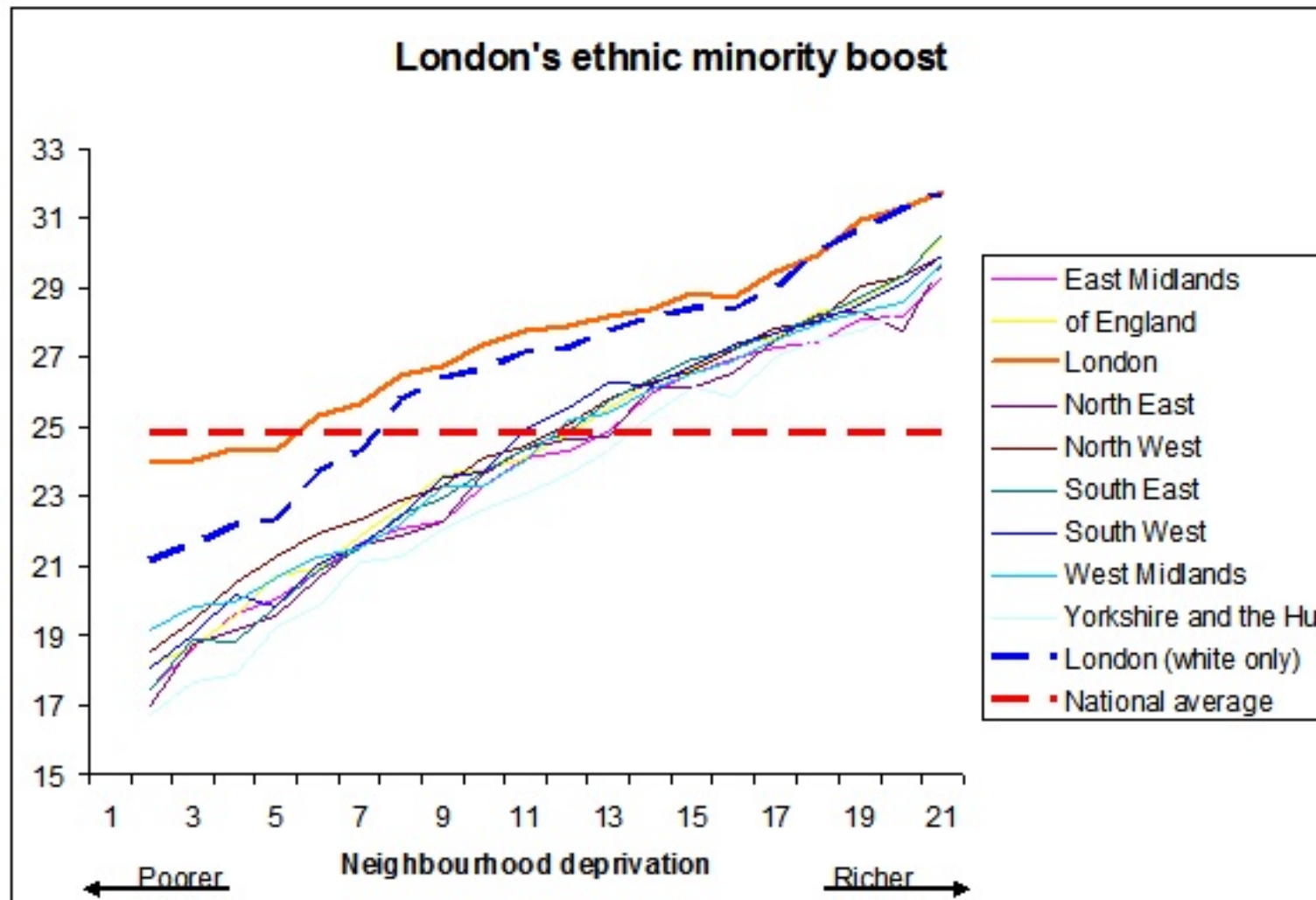
(blue/red means faster/slower than national performance 2003-9)



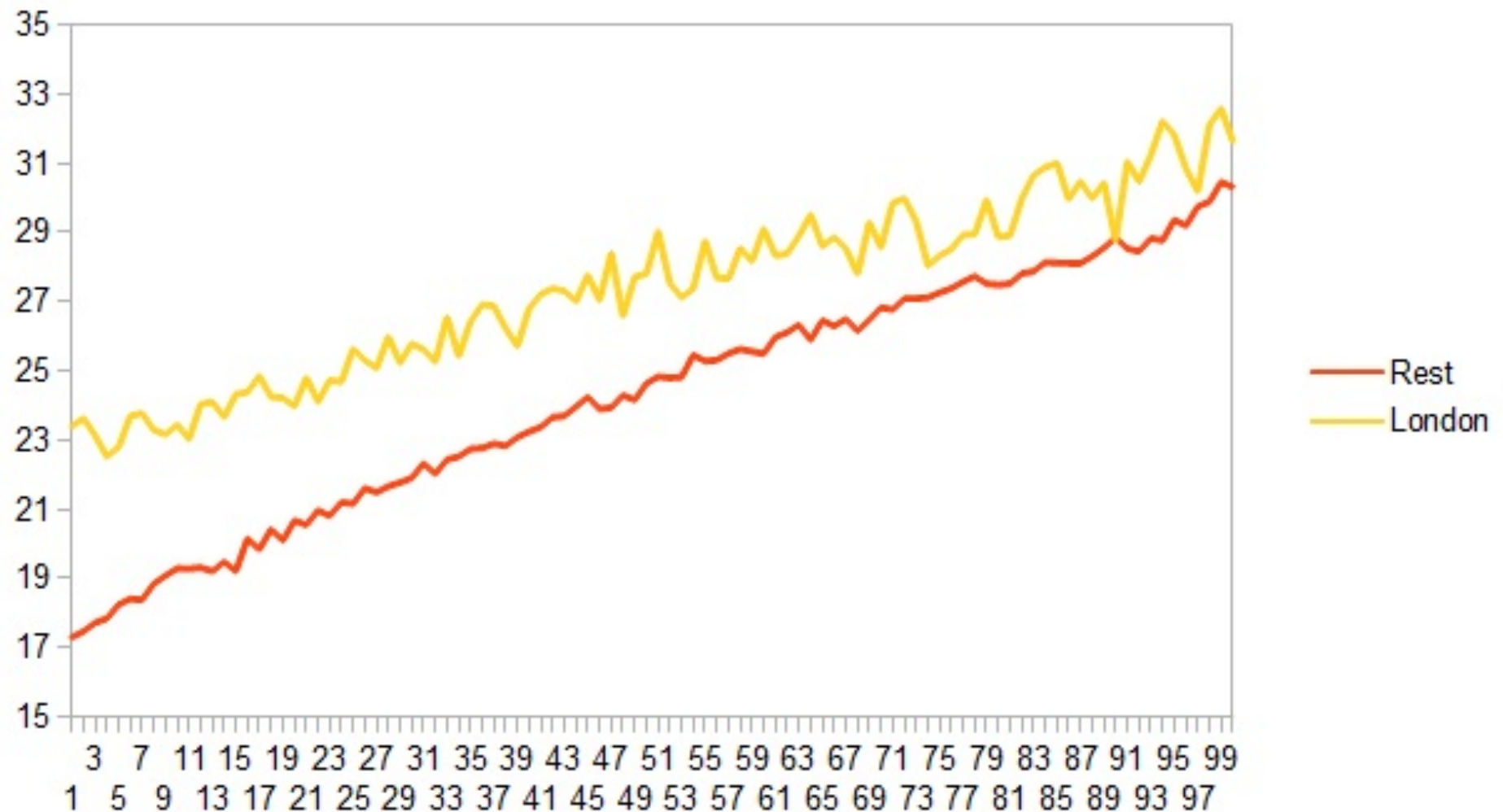
Big ethnic variation in UK (2010)



But it's not the whole gap (2010)



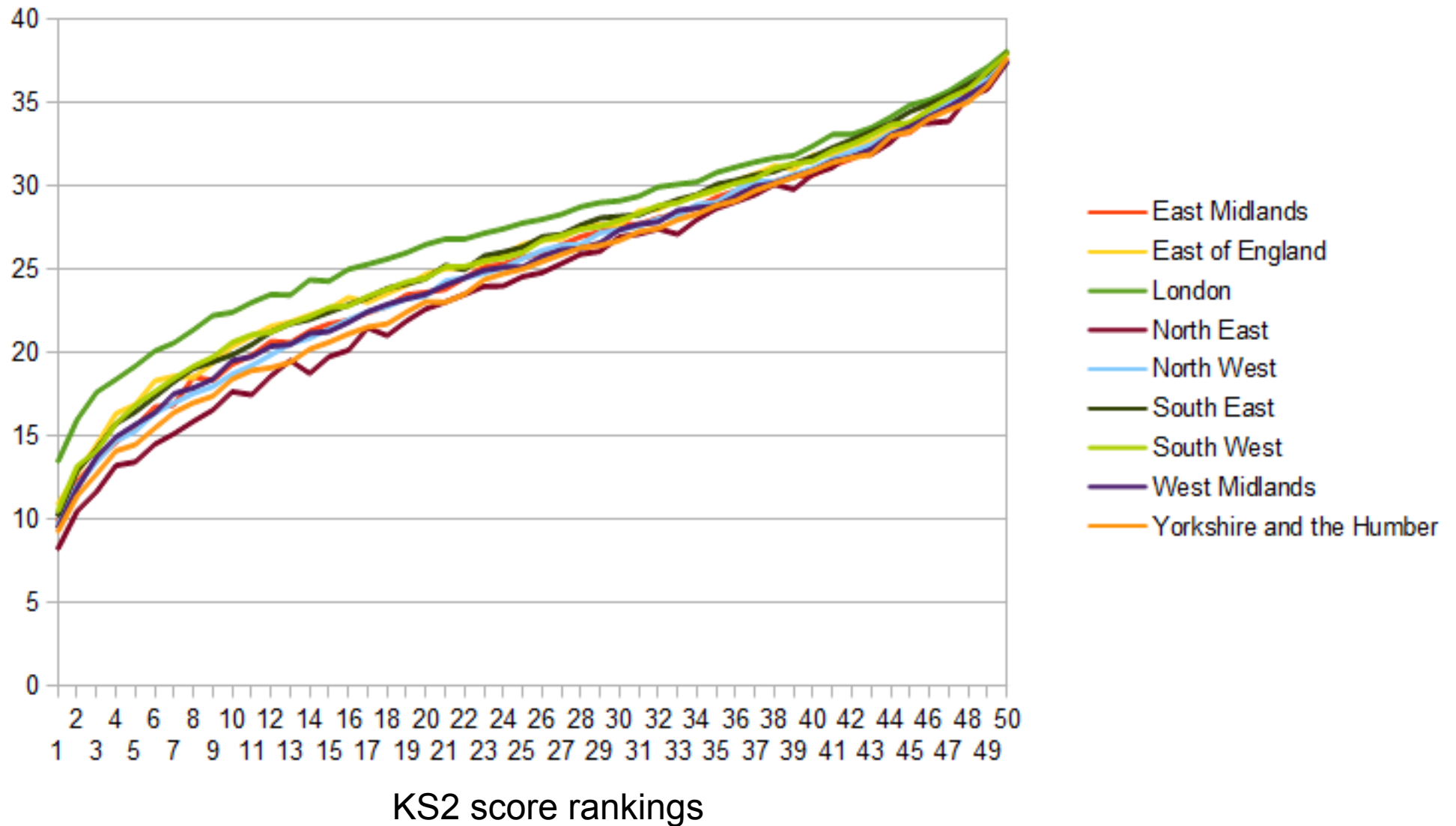
There's a strong London effect for white pupils



Adjusted for everything,

Region	Gap with the East Mids (2003)	Gap with the East Mids (2012)
East Midlands	0.000	0.000
West Midlands	0.006	0.040
East of England	0.050	0.078
North East	0.056	0.021
North West	0.111	0.089
Yorkshire & the Humber	-0.017	-0.051
South West	0.078	0.09
South East	0.105	0.090
London	0.262	0.445

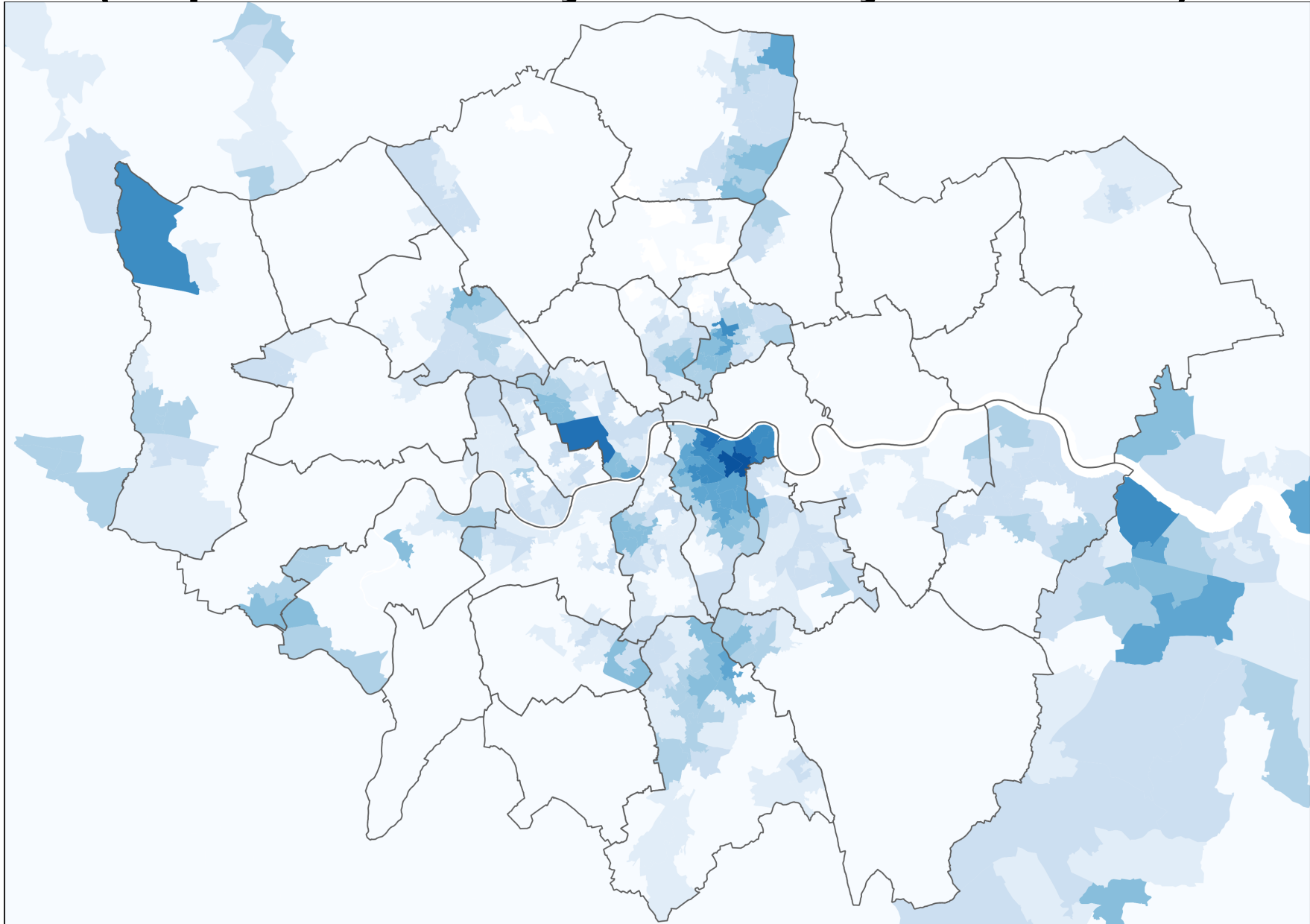
Does London advantage at low KS2 scores suggest it's sponsor academies?



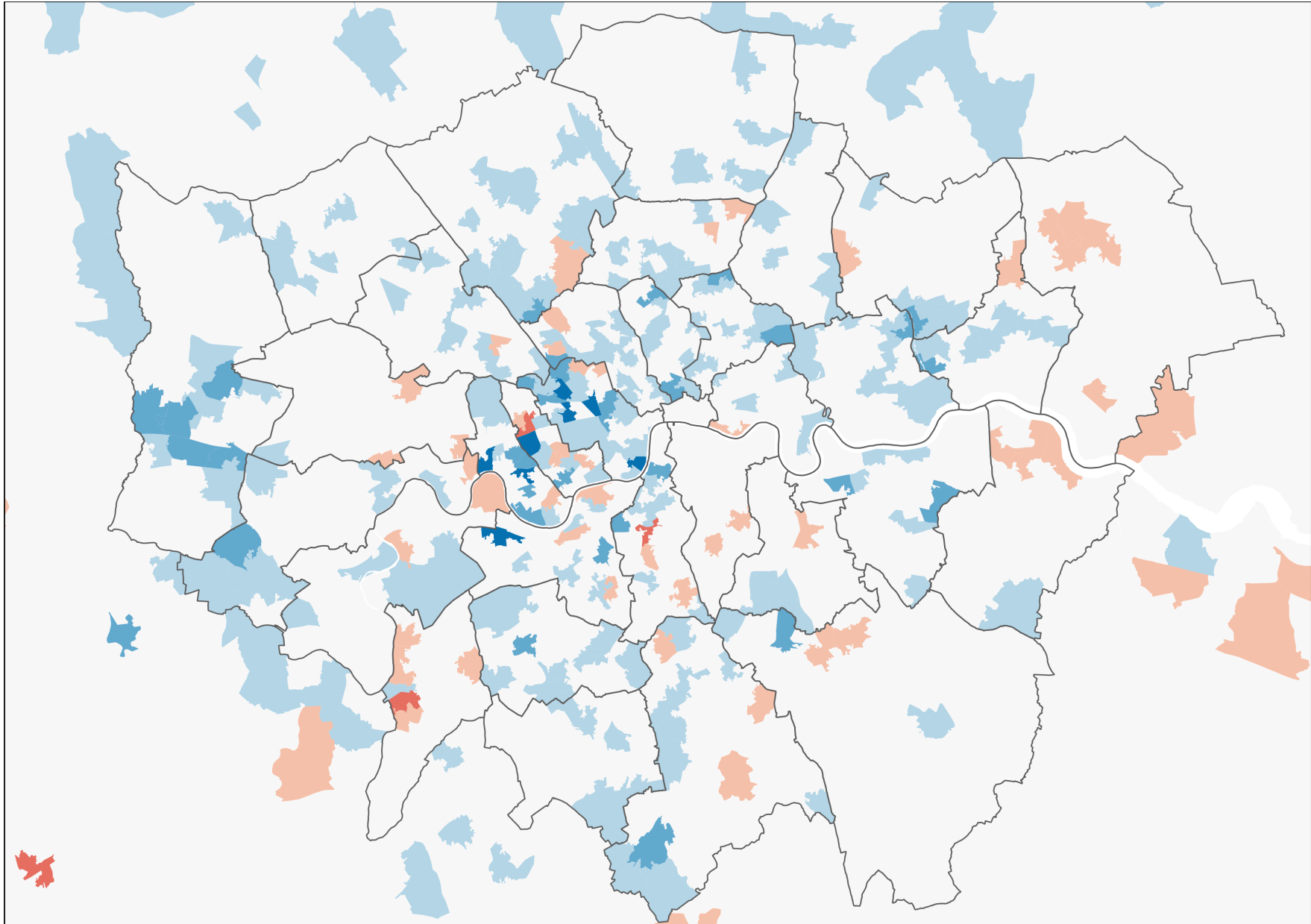
Best performing school chains in England 2011

- The Bourne Family Trust (Mossbourne)
- Westminster
- Future
- Alec Reed
- ARK Schools
- Bacon's CTC Trust (Bacon's College, Rotherhithe)
- Bristol Cathedral School
- Jack Petchey Foundation (Petchey)
- Islington
- Hackney
- Greig Trust (Haringey, Greig City Academy)
- Southwark

**Sponsor academies don't explain the
difference...**
(map shows density of academy attendance)



...but they are certainly part of the story



Something in the ether?

- London Challenge *surely* was a success
- Local authorities are quite different in inner London
- Rise in prestige of teaching (linked to Teach First?)
- Rise in the city's fortunes?

Declare independence?

- It would be a big coincidence if the London school system's needs are now the same as those of the rest of England:
 - Teachers' pay?
 - Classroom places squeeze?
 - Other rewards for teachers?
- The DfE itself is failing; if the city can scramble clear – perhaps seizing oversight of academies and the free schools system – that might allow it to escape the worst of it.