

High School #13



Design Development Presentation, Scott W. Washington,
Director, Capital Planning and Construction

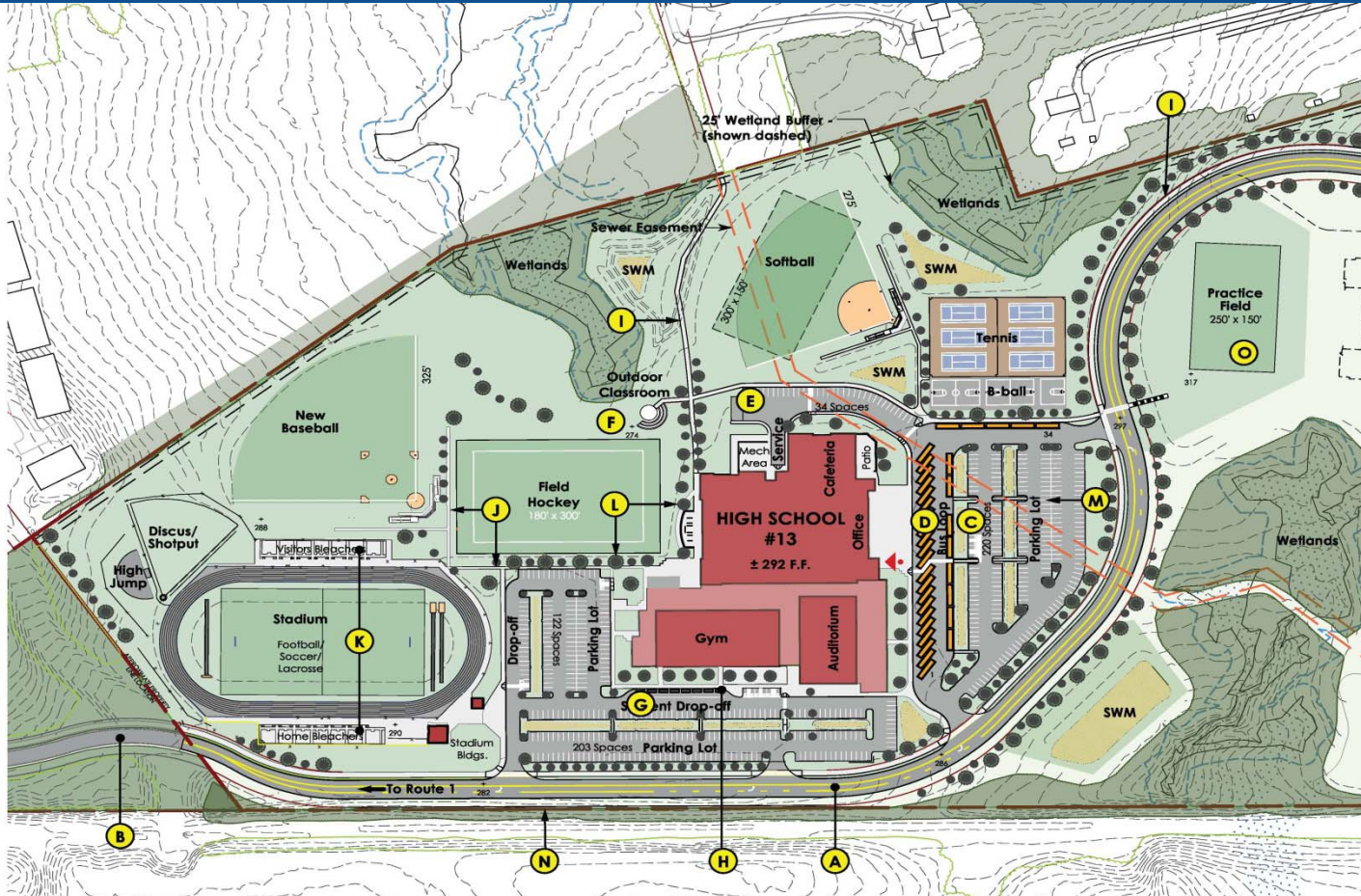
Project Updates

- Continued coordination with the county with regards to the date of property transfer to HCPSS, utility access to the school, the public road and site access, and walkways both on the school site and surrounding neighborhoods
- Anticipated property transfer from County to HCPSS by December 2019
- With an increased design capacity of 1,650, this is the fourth iteration of the prototype plan with the program reviewed and modified for each iteration
- Refined the design along with HCPSS staff during Design Development meetings to discuss space layouts, acoustical needs, and system types

Project Updates (continued)

- Refinement of the site plan, including the relocation of the outdoor classroom, removal of the solar panel canopies at the parking lot, and increased bus parking
- Some floor plan implemented recommendations include increased size of the cafeteria, corridor width, classroom size, and teaching space count; reconfiguration of the CTE Engineering layout, reconfiguration of the athletics/physical education areas
- LEED 'Silver' certificate project under the new LEED for Schools version 4 maintaining a projected 57 LEED credits

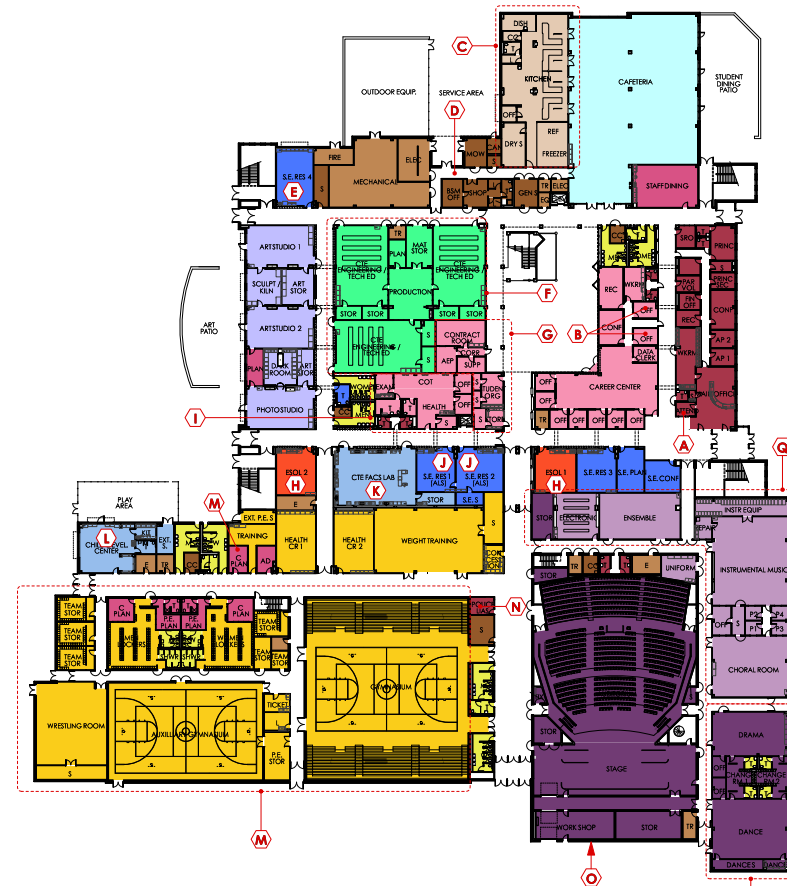
Site Plan



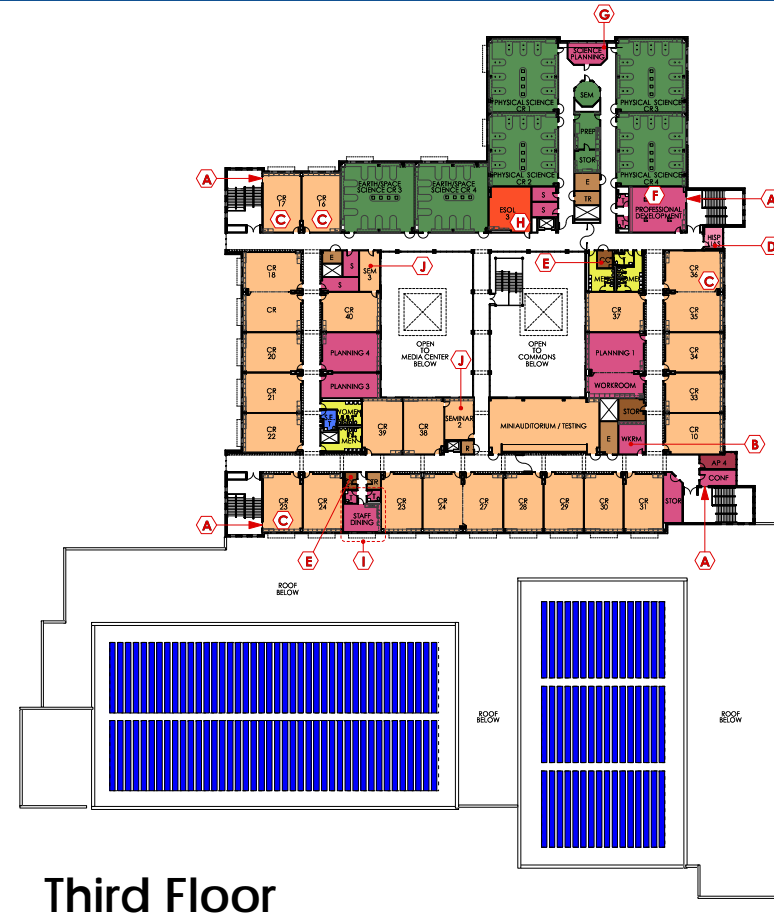
Proposed First Floor Plan

LEGEND

- | | | |
|---|--|---|
|  ADMINISTRATIVE SPACES |  STAFF SUPPORT SPACES |  STUDENT SERVICES |
|  ESOL |  GIFTED & TALENTED |  GENERAL INSTRUCTION |
|  PHYSICAL EDUCATION |  STUDENT TOILET ROOMS |  MEDIA CENTER |
|  SCIENCE |  CTE - TECHNOLOGY EDUCATION |  CTE - CAREER ACADEMY AND COMPUTER SCIENCE |
|  SPECIAL EDUCATION |  CTE - FAMILY AND CONSUMER SCIENCES |  CAFETERIA |
|  AUDITORIUM SPACES |  MUSIC SUITE |  ART SUITE |
|  CUSTODIAL AREAS |  BUILDING SERVICE AREAS |  FOOD SERVICES |



Proposed Second and Third Floor Plans



Architectural Character



Front Elevation



Side Elevation



Rear Elevation



Side Elevation

Total Project Budget

Base Construction Estimate	\$103,205,188
Architect/Engineering Fee	\$6,457,700
Construction Management Fee	\$4,868,574
Related Costs	\$5,404,000
Project Contingency	\$5,404,000
Equipment and Technology	<u>\$5,404,000</u>
Project Total Budget	\$130,743,462
Funding Projections	
FY19	\$6,732,000
FY20	\$15,600,000
FY21	\$32,260,000
FY22	\$32,280,000
FY23	\$32,260,000
FY24	<u>\$19,564,000</u>
Total Funding Projections	\$138,696,000

Summary

- Request approval to move into the construction development phase
- Contingent upon state approval, the construction document presentation will be scheduled for September 2019
 - Construction award May 2020
 - Construction complete April 2023
 - New facility occupied September 2023