

Schools to be included in the Boundary Work

Fairview Elementary School

Grant Elementary School

Mill Creek Elementary School

Paxton Keeley Elementary School

Rock Bridge Elementary School

Russell Boulevard Elementary School

Timeline

September — Attend PTSA meetings to begin sharing guiding principles with schools.

October — Boundary Committee is formed. Schools choose a representative for the Boundary Committee.

November-December — Boundary scenario development

January — Present scenarios to support committee and generate final scenarios

February — School forums

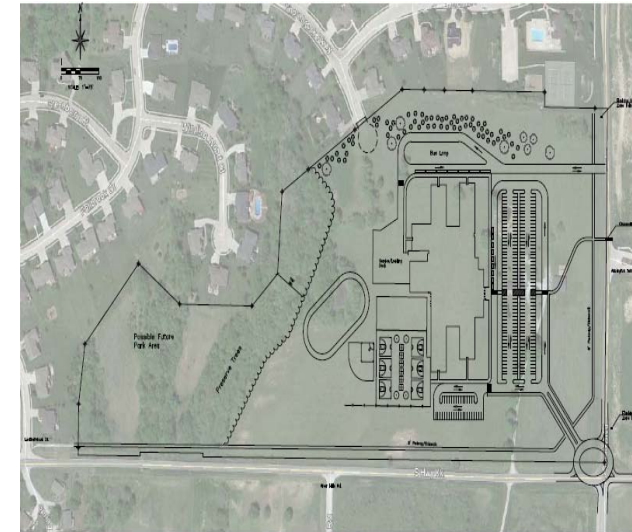
March — Incorporate feedback and administrative review

April — Presentation to the Board of Education

Note: The above timeline is a model, but may be adjusted in order to accommodate the needs of all stakeholders.



Elementary Boundary & Enrollment Planning *Southwest Location*



Ben Tilley
Assistant Superintendent for Elementary Education
Phone: 573-214-3400
Email: btalley@cpsk12.org

Guiding Principles

1. The committee considers this work as part of a district plan and one part of a whole.
2. The boundary should reflect the composition of the Columbia Public School community.
3. The committee recognizes the power of an elementary school to create community.
4. Accessibility for families is essential. (volunteering and attending school functions are easier when the school is near)
5. Walkability whenever possible
6. The boundary should anticipate future growth of the neighborhood.
7. Consider time students spend on a bus and distance traveled to and from school.
8. Consider boundary lines that follow natural/manmade boundaries.
9. Consider a transfer policy that allows 5th graders to remain at their previous school and policies that allow siblings to remain

Children who were affected by the 2014-15 boundary change will not be forced to change schools.

(5th grade transportation to be provided by CPS)

Boundary Committee Members

- Fairview Representative
- Grant Representative
- Mill Creek Representative
- Paxton Keeley Representative
- Rock Bridge Representative
- Russell Boulevard Representative
- Community Member
- Community Member
- Community Member
- Boundary Facilitator

Support Committee Members

Elementary Principal

Assistant Principal

Teacher

City of Columbia

CPS Enrollment Support

Linda Quinley—COO—Columbia Public Schools

GIS Support

Community Member

Director of Transportation