



Northwest Division

Oregon Trunk Subdivision

Reference to:

NWACP Geographical Response Plan

Reference the Entire Document as soon as possible to consult with Agency Responders. The full document can be found at:

<http://www.rrt10nwac.com/GRP/Default.aspx>

BNSF, the State of Oregon and the US EPA have developed a Geographical Response Plan (GRP) to be used in the event of a derailment resulting in a release or potential release of oil or hazardous material into the water of the Deschutes.

The full GRP can be accessed by the following link: <http://www.rtt10nwac.com/GRP/Default.aspx> - Lower Deschutes River.

The first priority GRP on any incident on the Deschutes River is strategy RM .04.

BNSF maintains 3 spill response trailers along the Deschutes River – two (2) in Moody, OR and one (1) in Maupin, OR.

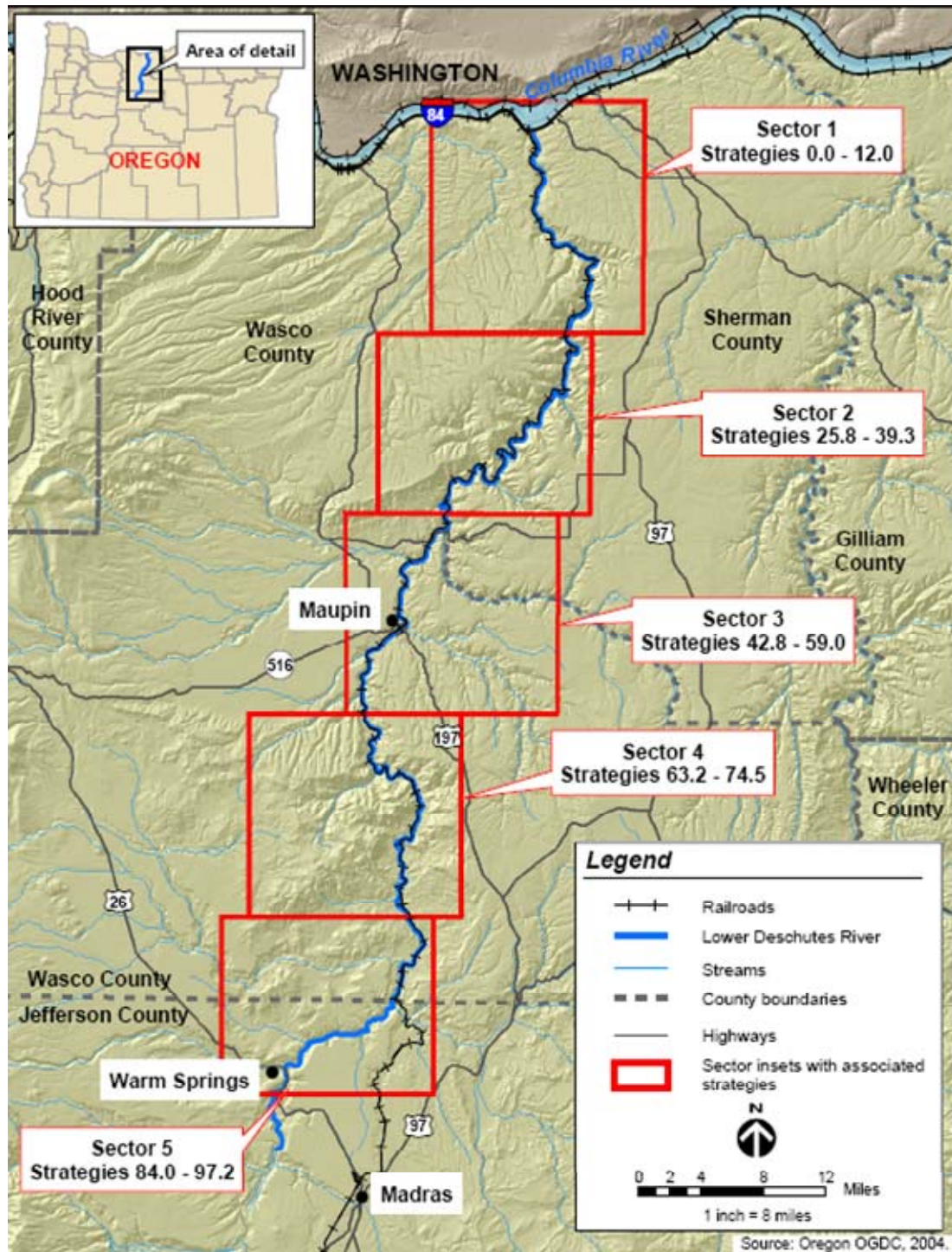
Moody Rail Containers (RTTX 972157 and RTTX 972195)

Requires Locomotive for Transport

Item	Quantity
Poly Pro Pads – ¼" x 17" x 19"	35 bales
Poly Pro Boom – 8" x 10'	38 bales
Boom 10" – 4" float x 6" skirt – 50ft sections	4 each (200ft total)
Boom 18" – 6" float x 12" skirt – 100ft sections	4 each (400ft total)
Boom 18" – 6" float x 12" skirt – 50ft sections	4 each (200ft total)
55 Gallon Drums	10 each
95 Gallon Over-pack Drum	10 each
6 Mil Visqueen 20' x 100'	6 each
RESQMAX Deployment Kit	1 each
SCBA Tank	1 each
Anchor Systems	

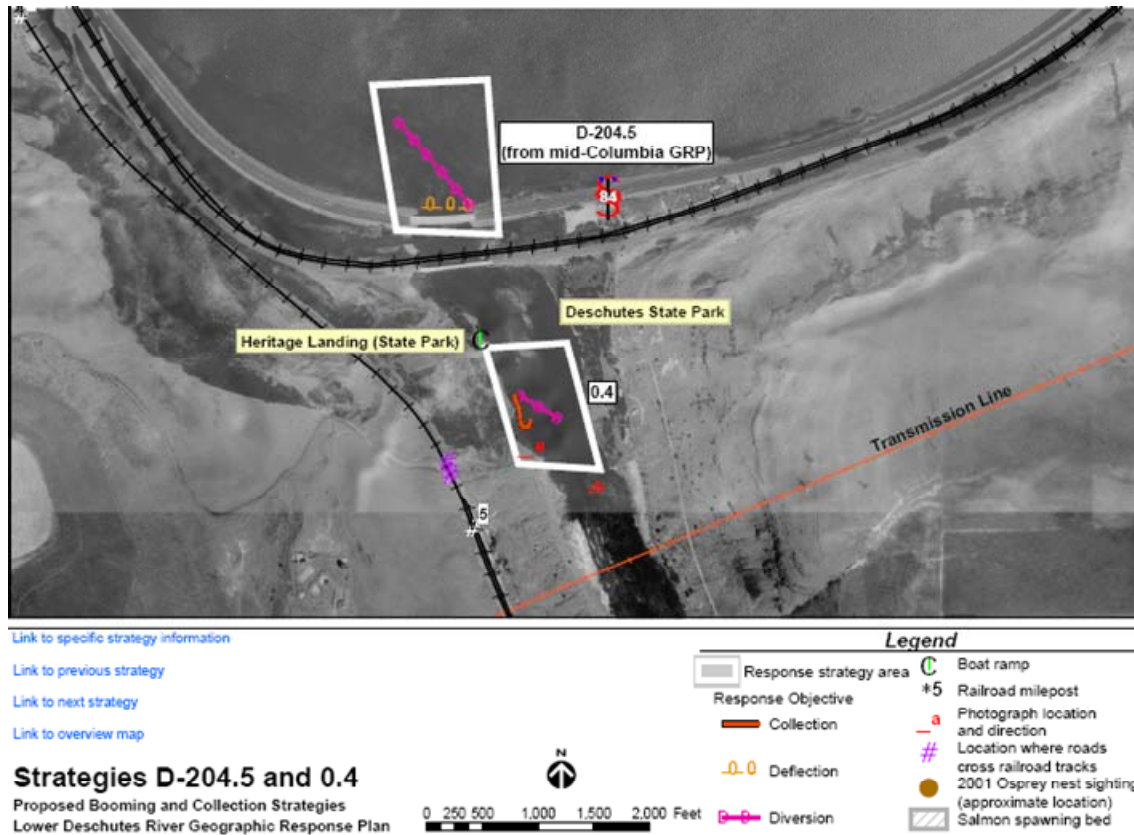
Maupin Trailer

Item	Quantity
Boom 18" – 6" float x 12" skirt – 50ft sections	1000ft
Tow Bridles	4 each
22# Anchor Systems	4 each
Come-Alongs – 1500 pound capacity	4 each
½" Line 600' spools	2 each
3/8" Line 600' spools	2 each
T-style Fence Posts	10 each
6 Mil Visqueen 20' x 100'	1 each
Fence Post Pounder	1 each
Sledge Hammer	2 each
Basic Tool Kit	1 each
Sorbent Boom 5" x 40'	4 bales
Sorbent Sweep 100'	6 bales
Sorbent Pads	2 bales





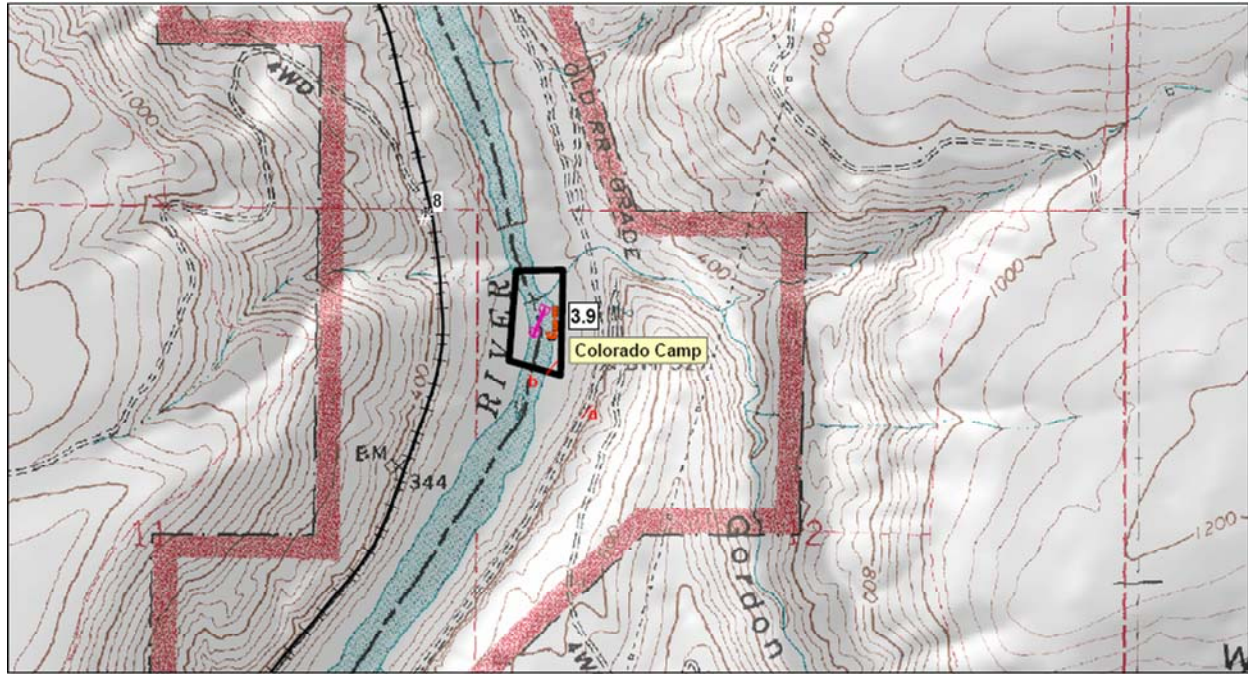
MP 5- MP 6 - Sector 1 – see next page for GRP description



Strategy Number	Response Strategy	Number of Booms and Length of Each	Strategy Implementation	Staging Area	Site Access	Resources Protected	Comments	Status	Lat/Long (NAD27)
D-204.5	Deflection / Diversion	(1) 500' (1) 1,000'	Use either 1,000' deflection to send oil into the main current or 500' exclusion tied to the RR trestle	Heritage Landing Park	I-84 to Exit 88 to Heritage Landing boat ramp	Deschutes River, Waterfowl	RR milepost 4.6 Mid-Columbia GRP response strategy designed to protect the Deschutes River from a spill in the Columbia River.	Unverified	-120.91341, 45.63689
RM 0.4	Collection	(16) 50'	Use 16 sections of 50' collection boom off of west side boat ramp	Heritage Landing Park	I-84 to Heritage Landing Park	Waterfowl, downstream habitat, Columbia River	RR milepost 4.9 (Road to Rail Access) This strategy is the first priority response to an incident on the Deschutes River.	Unverified	-120.90974, 45.63080



MP 8 – MP 9 – Sector 1 - see next page for GRP description



[Link to specific strategy information](#)

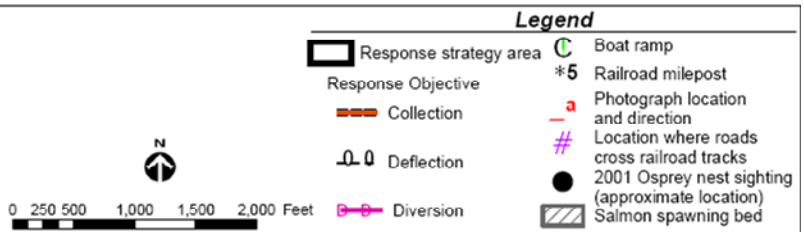
[Link to previous strategy](#)

[Link to next strategy](#)

[Link to overview map](#)

Strategy 3.9

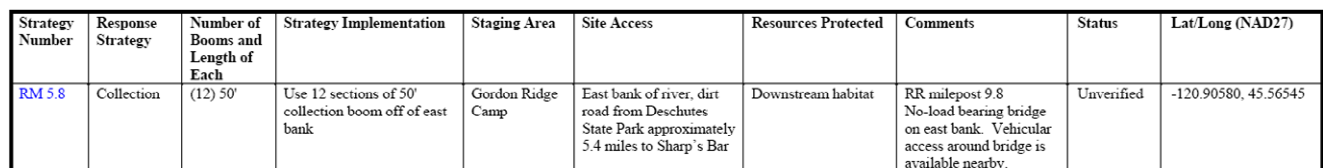
Proposed Booming and Collection Strategies
Lower Deschutes River Geographic Response Plan



Strategy Number	Response Strategy	Number of Booms and Length of Each	Strategy Implementation	Staging Area	Site Access	Resources Protected	Comments	Status	Lat/Long (NAD27)
RM 3.9	Collection	(12) 50'	Use 12 sections of 50' collection boom off of east bank	Colorado Camp	East bank of river, dirt road from Deschutes State Park approximately 3.6 miles to Colorado Camp	Waterfowl, downstream habitat, irrigation intake, Columbia River	RR milepost 8.1	Unverified	-120.89409, 45.58908

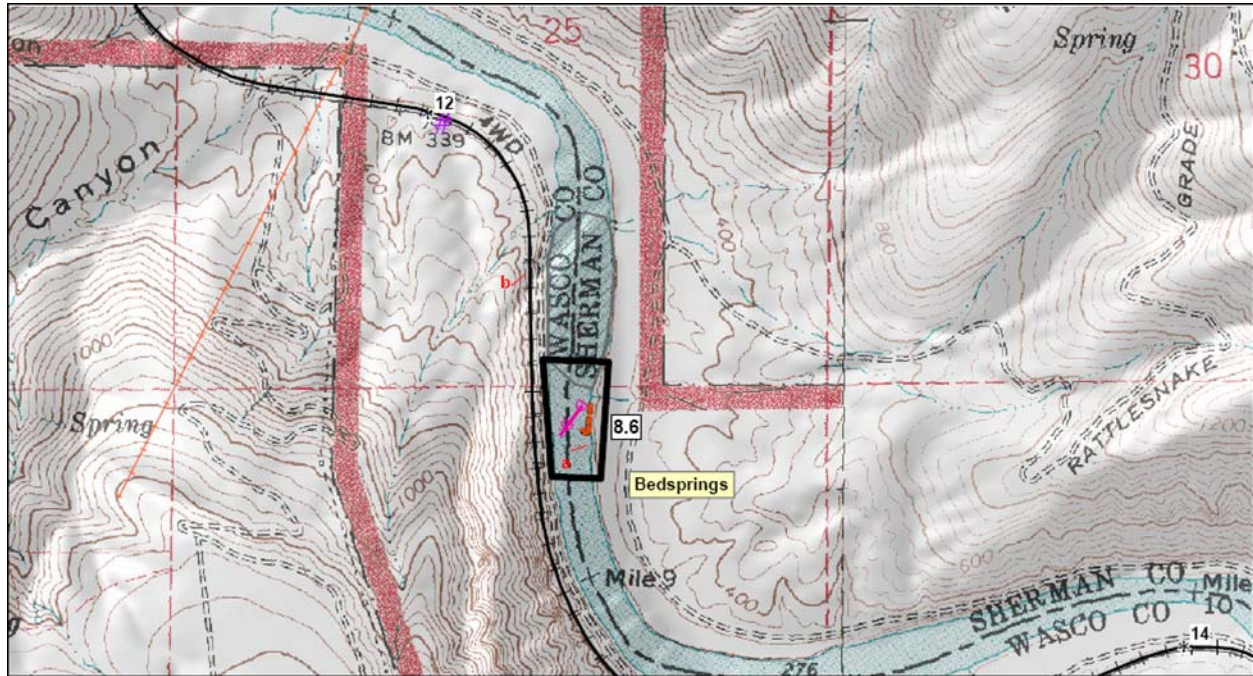


MP 10 – MP 11 – Sector 1 – see next page for GRP description



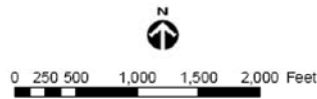


MP 13 – MP 14 – Sector 1 – see next page for GRP description


[Link to specific strategy information](#)
[Link to previous strategy](#)
[Link to next strategy](#)
[Link to overview map](#)

Strategy 8.6

Proposed Booming and Collection Strategies
Lower Deschutes River Geographic Response Plan



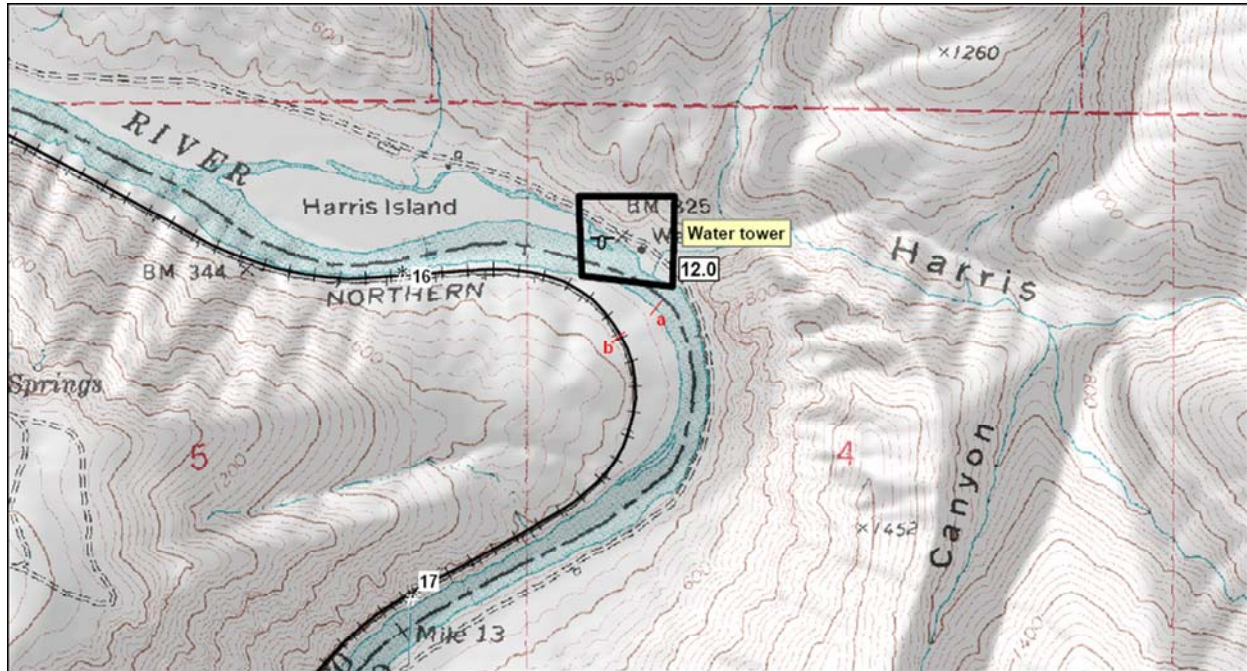
Legend

- Response strategy area
- Response Objective
- Collection
- Deflection
- Diversion
- C Boat ramp
- *5 Railroad milepost
- a Photograph location and direction
- # Location where roads cross railroad tracks
- 2001 Osprey nest sighting (approximate location)
- Salmon spawning bed

Strategy Number	Response Strategy	Number of Booms and Length of Each	Strategy Implementation	Staging Area	Site Access	Resources Protected	Comments	Status	Lat/Long (NAD27)
RM 8.6	Collection	(13) 50'	Use 13 sections of 50' collection boom off of east bank	Bedsprings	East bank of river, dirt road from Deschutes State Park approximately 8.2 miles	Downstream habitat, salmon spawning beds (see Table 6-1 for seasonal fish presence)	RR milepost 12.5	Unverified	120.88342, 45.53280



MP 16- MP 17 – Sector 1 – see next page for GRP description



[Link to specific strategy information](#)

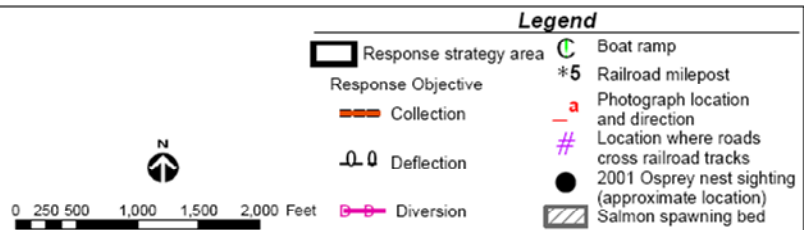
[Link to previous strategy](#)

[Link to next strategy](#)

[Link to overview map](#)

Strategy 12.0

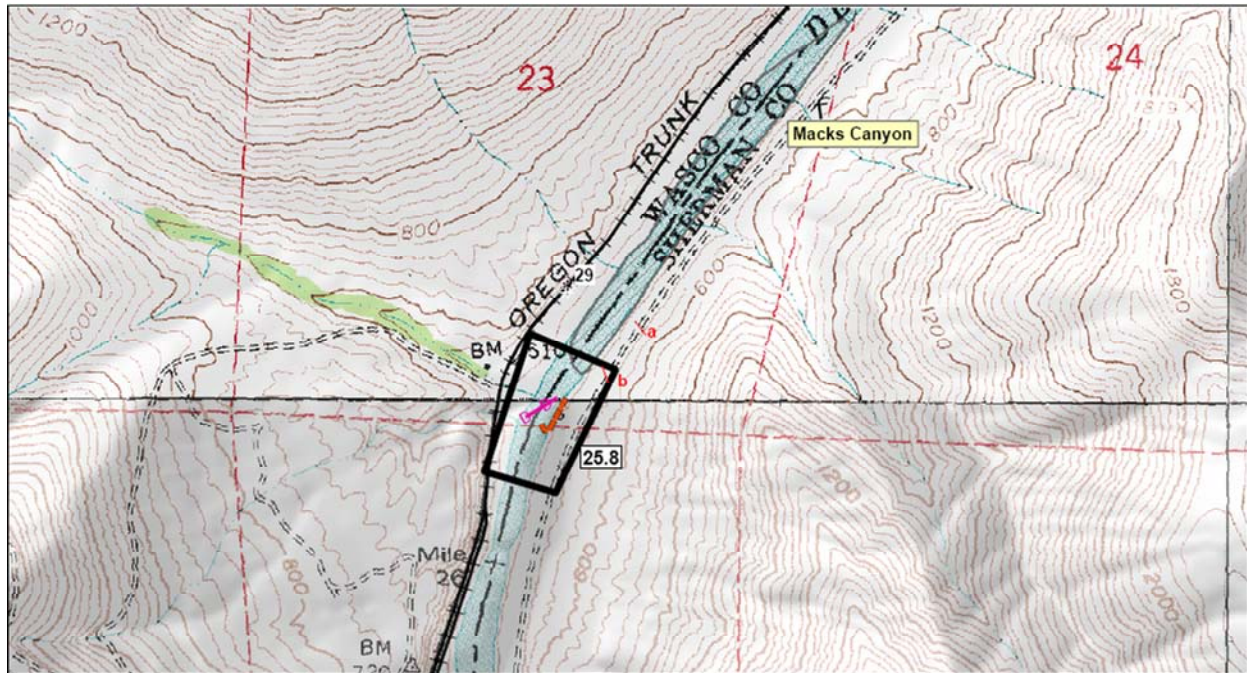
Proposed Booming and Collection Strategies
Lower Deschutes River Geographic Response Plan



Strategy Number	Response Strategy	Number of Booms and Length of Each	Strategy Implementation	Staging Area	Site Access	Resources Protected	Comments	Status	Lat/Long (NAD27)
RM 12.0	Deflection	(1) 200'	Use 1 section (200') to send oil into main channel and protect Harris Island back channel	Water tower (east bank)	East bank of river, dirt road from Deschutes State Park approximately 11.4 miles to water tower at Harris Island	East bank back channel, Waterfowl	RR milepost 16.2	Unverified	-120.82646, 45.51643



MP 29 – MP 30 – Sector 2 – see next page for GRP description



[Link to specific strategy information](#)

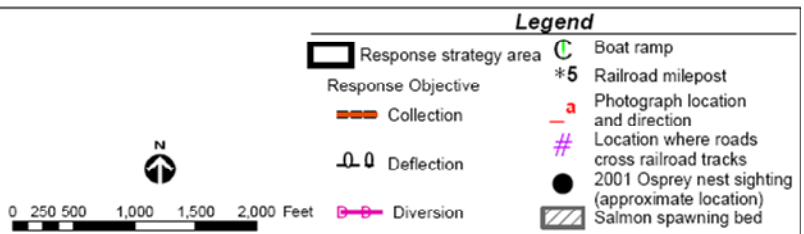
[Link to previous strategy](#)

[Link to next strategy](#)

[Link to overview map](#)

Strategy 25.8

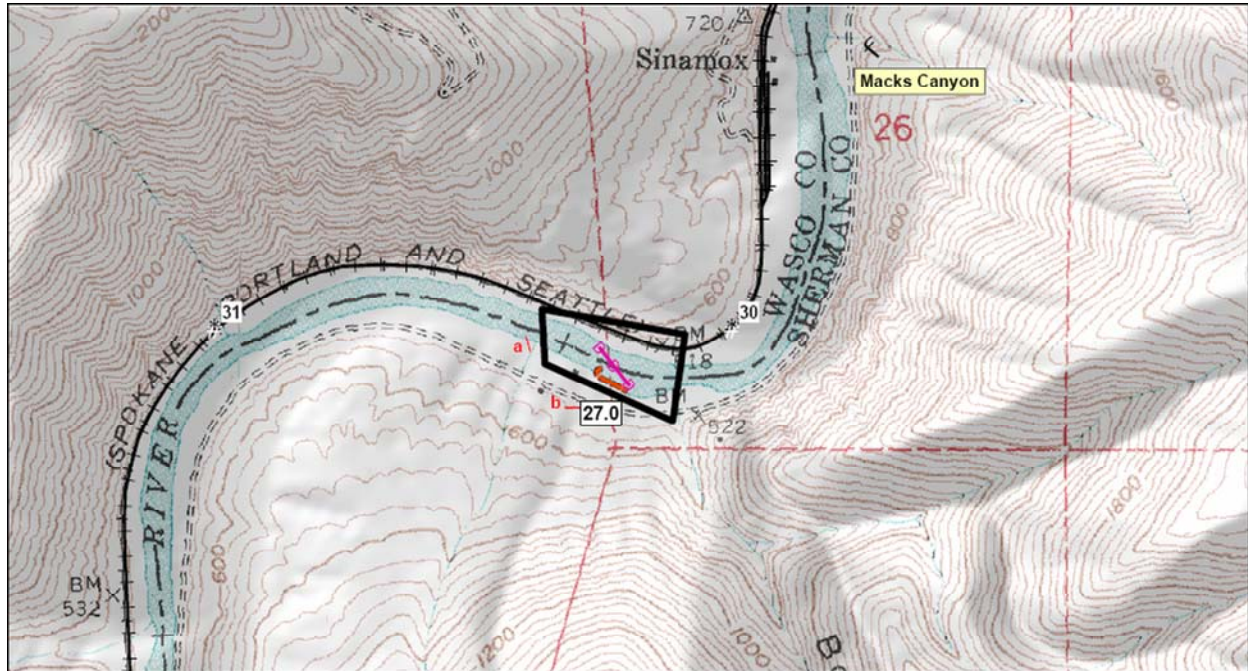
Proposed Booming and Collection Strategies
Lower Deschutes River Geographic Response Plan



Strategy Number	Response Strategy	Number of Booms and Length of Each	Strategy Implementation	Staging Area	Site Access	Resources Protected	Comments	Status	Lat/Long (NAD27)
RM 25.8	Collection	(14) 50'	Use 14 sections of 50' collection boom off of east bank	Macks Canyon	East bank dirt road, approximately 15.3 miles north from Hwy. 216	Downstream habitat, salmon spawning beds (see Table 6-1 for seasonal fish presence)	RR milepost 29.2	Unverified	-120.89660, 45.37466



MP 30- MP 31 – Sector 2 – see next page for GRP description



[Link to specific strategy information](#)

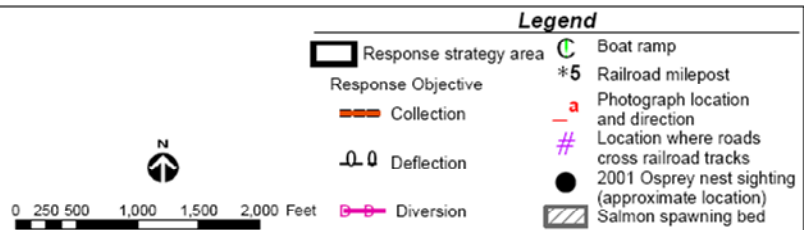
[Link to previous strategy](#)

[Link to next strategy](#)

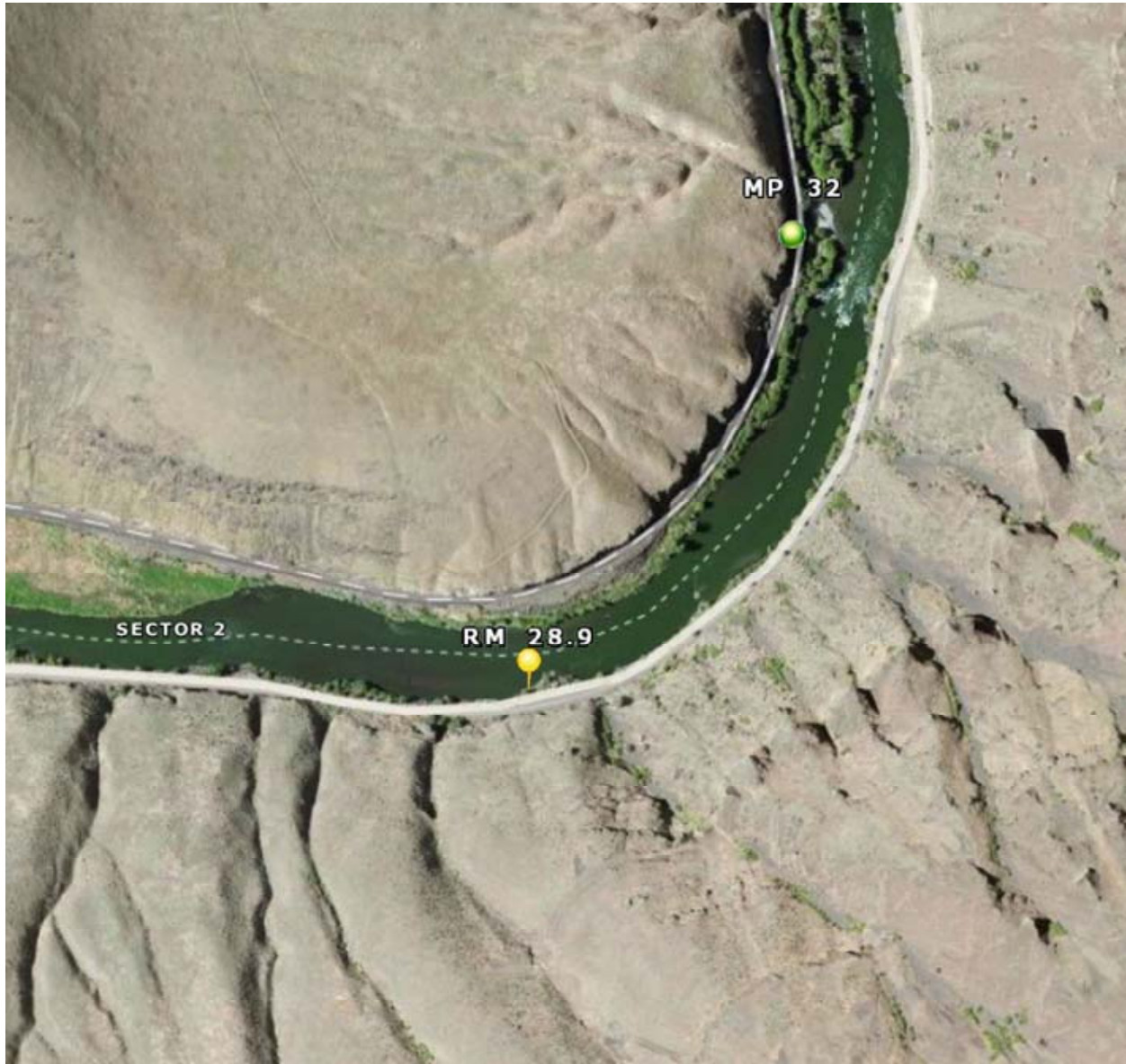
[Link to overview map](#)

Strategy 27.0

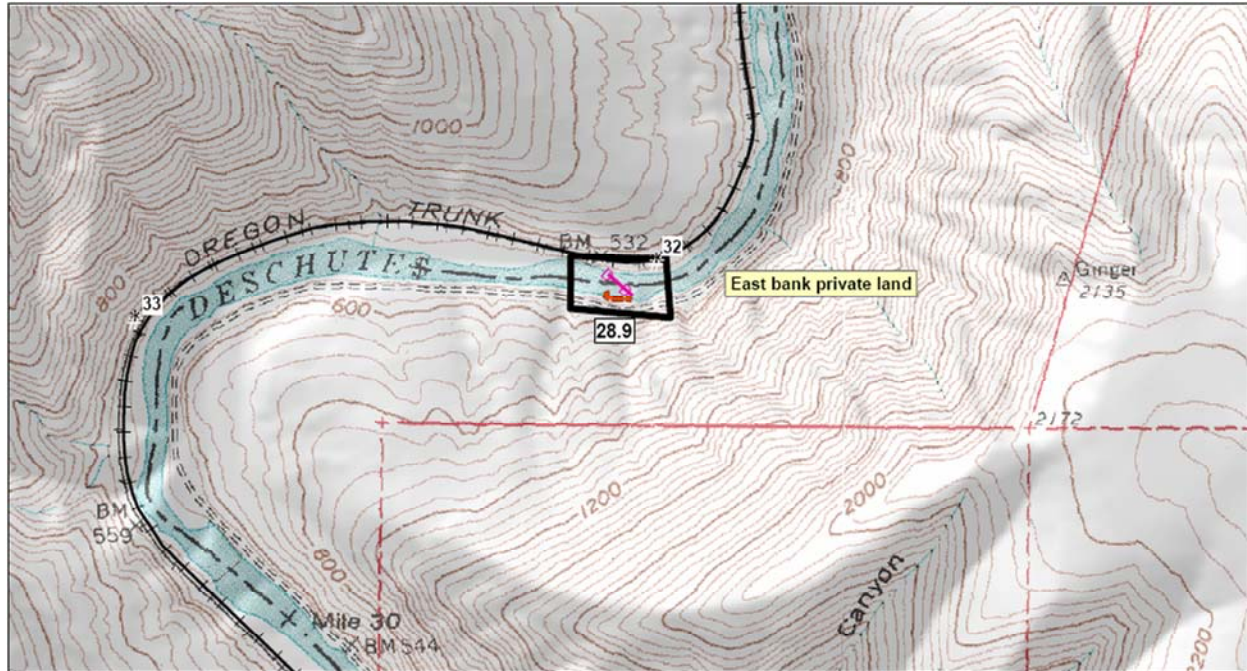
Proposed Booming and Collection Strategies
Lower Deschutes River Geographic Response Plan



Strategy Number	Response Strategy	Number of Booms and Length of Each	Strategy Implementation	Staging Area	Site Access	Resources Protected	Comments	Status	Lat/Long (NAD27)
RM 27.0	Collection	(16) 50'	Use 16 sections of 50' collection boom off of east bank	Macks Canyon	East bank dirt road, approximately 14.1 miles north from Hwy. 216	Downstream habitat	RR milepost 30.3	Unverified	-120.90480, 45.36138



MP 32- MP 33 – Sector 2 – see next page for GRP description



[Link to specific strategy information](#)

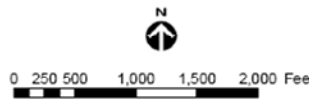
[Link to previous strategy](#)

[Link to next strategy](#)

[Link to overview map](#)

Strategy 28.9

Proposed Booming and Collection Strategies
Lower Deschutes River Geographic Response Plan

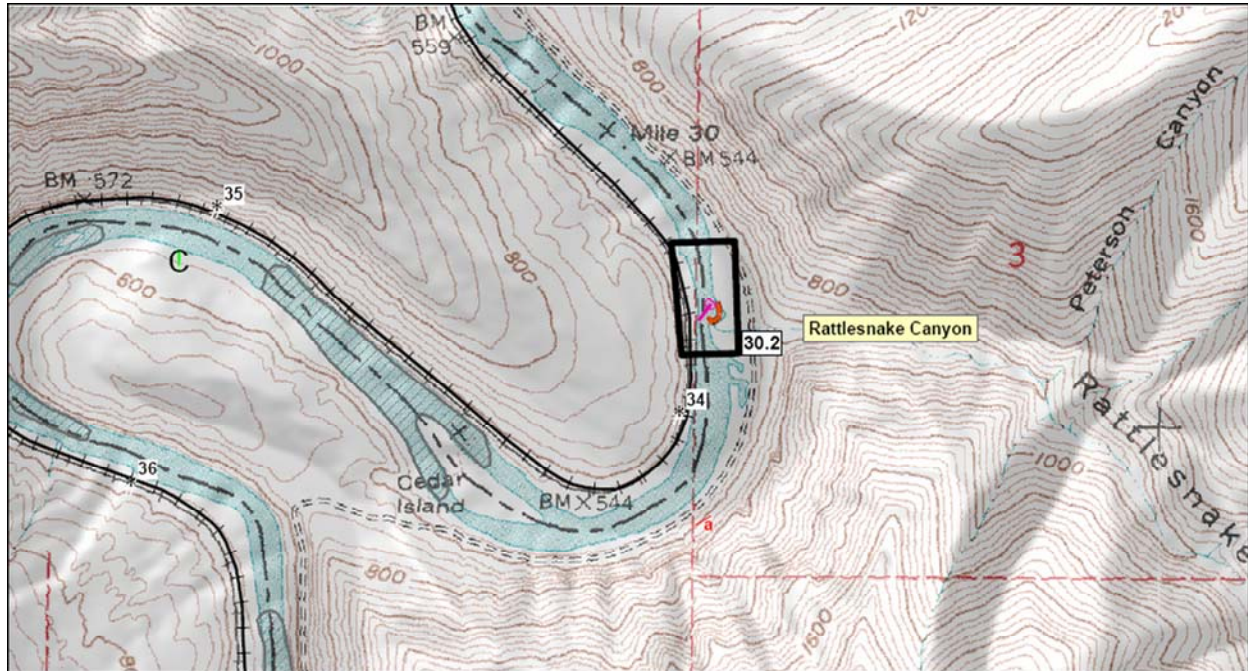


Legend	
	Response strategy area
Response Objective	
	Collection
	Deflection
	Diversion
	Boat ramp
	Railroad milepost
	Photograph location and direction
	Location where roads cross railroad tracks
	2001 Osprey nest sighting (approximate location)
	Salmon spawning bed

Strategy Number	Response Strategy	Number of Booms and Length of Each	Strategy Implementation	Staging Area	Site Access	Resources Protected	Comments	Status	Lat/Long (NAD27)
RM 28.9	Collection	(12) 50'	Use 12 sections of 50' collection boom off of east bank	Private land, east bank	East bank dirt road, approximately 12.4 miles north from Hwy. 216	Downstream habitat	RR milepost 32.1	Unverified	-120.92384, 45.34737



MP 34 – MP 35 – Sector 2 – see next page for GRP description



[Link to specific strategy information](#)

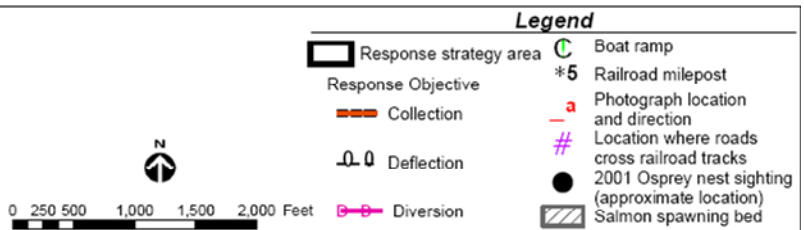
[Link to previous strategy](#)

[Link to next strategy](#)

[Link to overview map](#)

Strategy 30.2

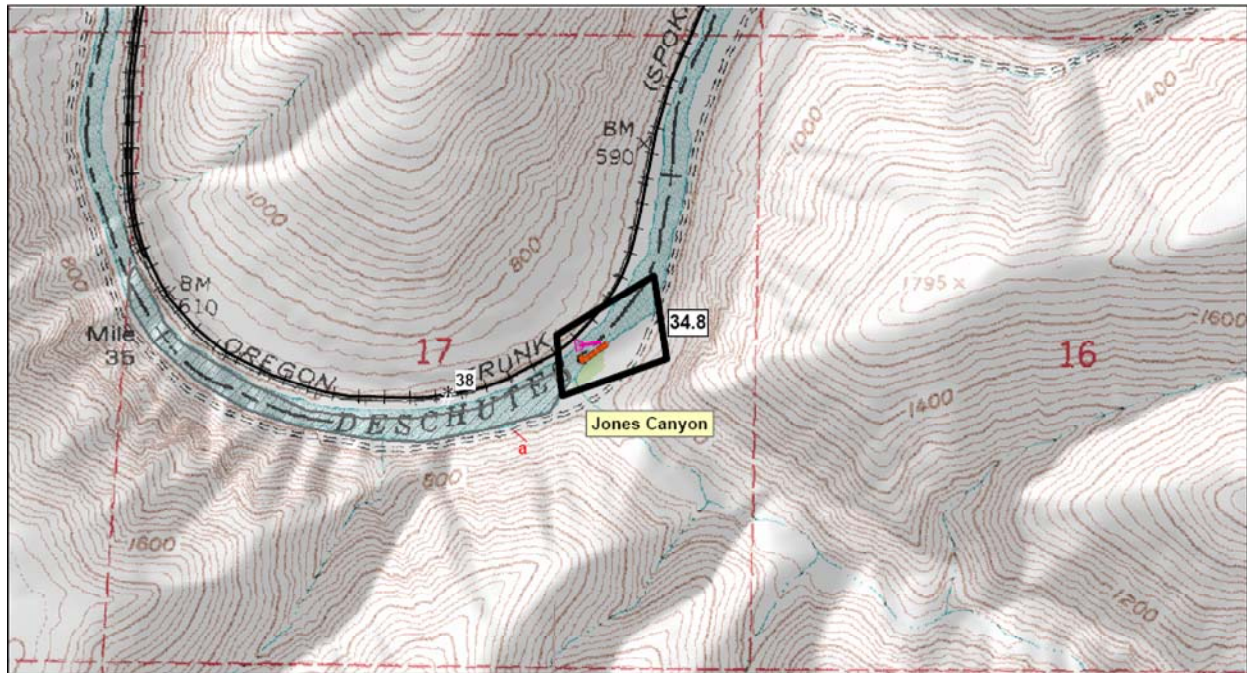
Proposed Booming and Collection Strategies
Lower Deschutes River Geographic Response Plan



Strategy Number	Response Strategy	Number of Booms and Length of Each	Strategy Implementation	Staging Area	Site Access	Resources Protected	Comments	Status	Lat/Long (NAD27)
RM 30.2	Collection	(10) 50'	Use 10 sections of 50' collection boom off of east bank	Rattlesnake Canyon	East bank dirt road, approximately 10.8 miles north from Hwy. 216	Downstream habitat	RR milepost 33.8	Unverified	-120.93110, 45.33618



MP 37- MP 38 – Sector 2 – see next page for GRP description



[Link to specific strategy information](#)

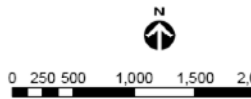
[Link to previous strategy](#)

[Link to next strategy](#)

[Link to overview map](#)

Strategy 34.8

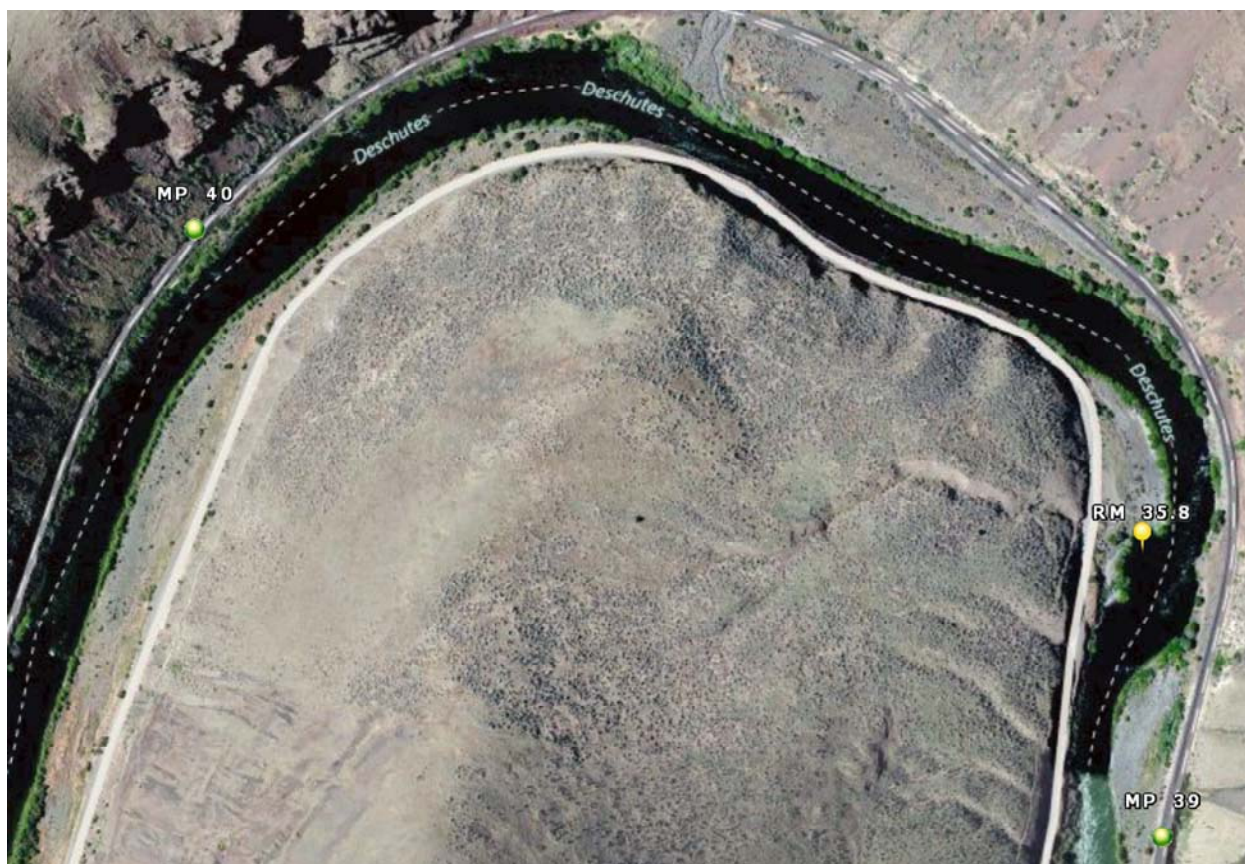
Proposed Booming and Collection Strategies
Lower Deschutes River Geographic Response Plan



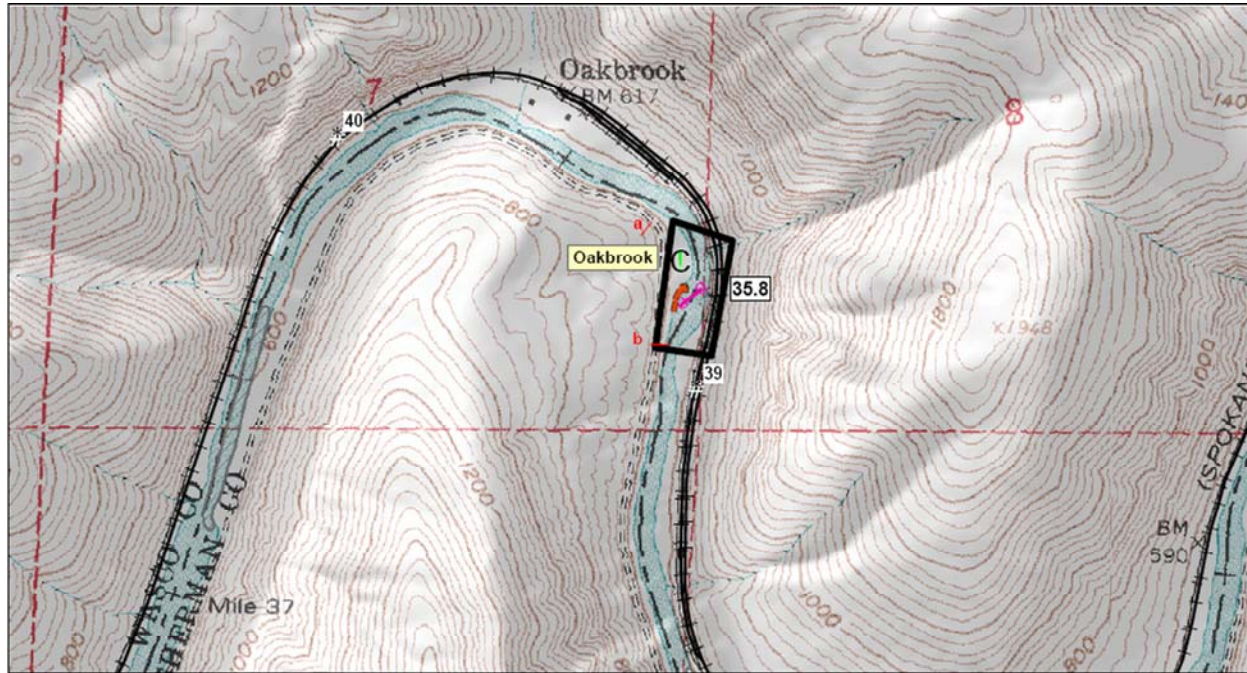
Legend

- Response strategy area
- Response Objective
- Collection
- Deflection
- Diversion
- C Boat ramp
- *5 Railroad milepost
- a Photograph location and direction
- # Location where roads cross railroad tracks
- 2001 Osprey nest sighting (approximate location)
- Salmon spawning bed

Strategy Number	Response Strategy	Number of Booms and Length of Each	Strategy Implementation	Staging Area	Site Access	Resources Protected	Comments	Status	Lat/Long (NAD27)
RM 34.8	Collection	(11) 50'	Use 11 sections of 50' collection boom off of east bank	Jones Canyon Camp	East bank dirt road, approximately 8.0 miles north from Hwy. 216	Downstream habitat, salmon spawning beds (see Table 6-1 for seasonal fish presence)	RR milepost 37.8	Unverified	-120.95662, 45.30875

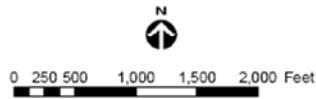


MP 40 – MP 39 – Sector 2 – see next page for GRP description


[Link to specific strategy information](#)
[Link to previous strategy](#)
[Link to next strategy](#)
[Link to overview map](#)

Strategy 35.8

Proposed Booming and Collection Strategies
Lower Deschutes River Geographic Response Plan



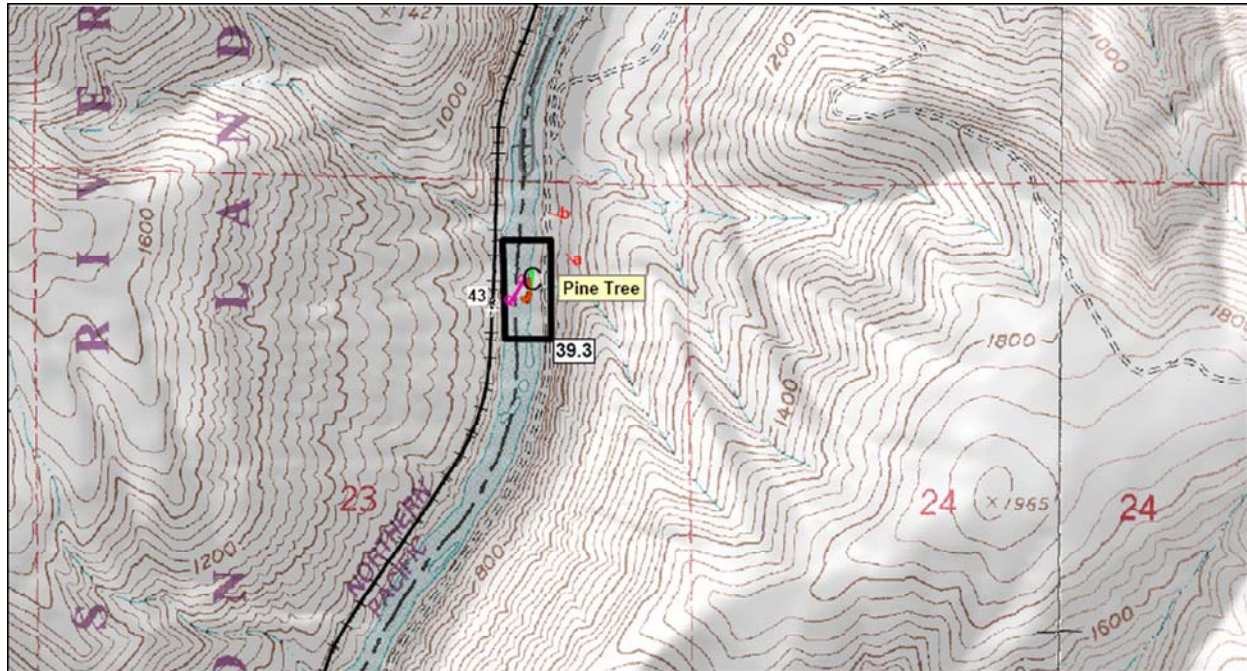
Legend

- Response strategy area
- Response Objective
- Collection
- Deflection
- Diversion
- C Boat ramp
- *5 Railroad milepost
- a Photograph location and direction
- # Location where roads cross railroad tracks
- 2001 Osprey nest sighting (approximate location)
- Salmon spawning bed

Strategy Number	Response Strategy	Number of Booms and Length of Each	Strategy Implementation	Staging Area	Site Access	Resources Protected	Comments	Status	Lat/Long (NAD27)
RM 35.8	Collection	(11) 50'	Use 11 sections of 50' collection boom off of east bank	Oakbrook	East bank dirt road, approximately 6.5 miles north from Hwy. 216	Downstream habitat	RR milepost 39.2	Unverified	-120.97169, 45.31873



MP 42- MP 43 – Sector 2



[Link to specific strategy information](#)

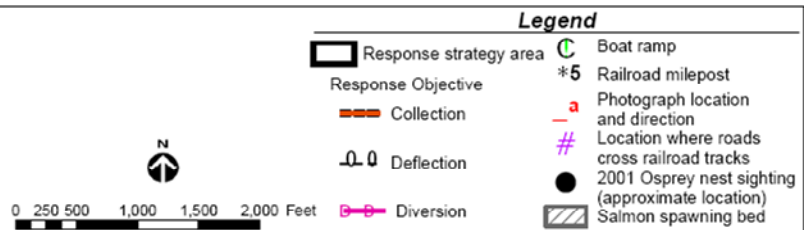
[Link to previous strategy](#)

[Link to next strategy](#)

[Link to overview map](#)

Strategy 39.3

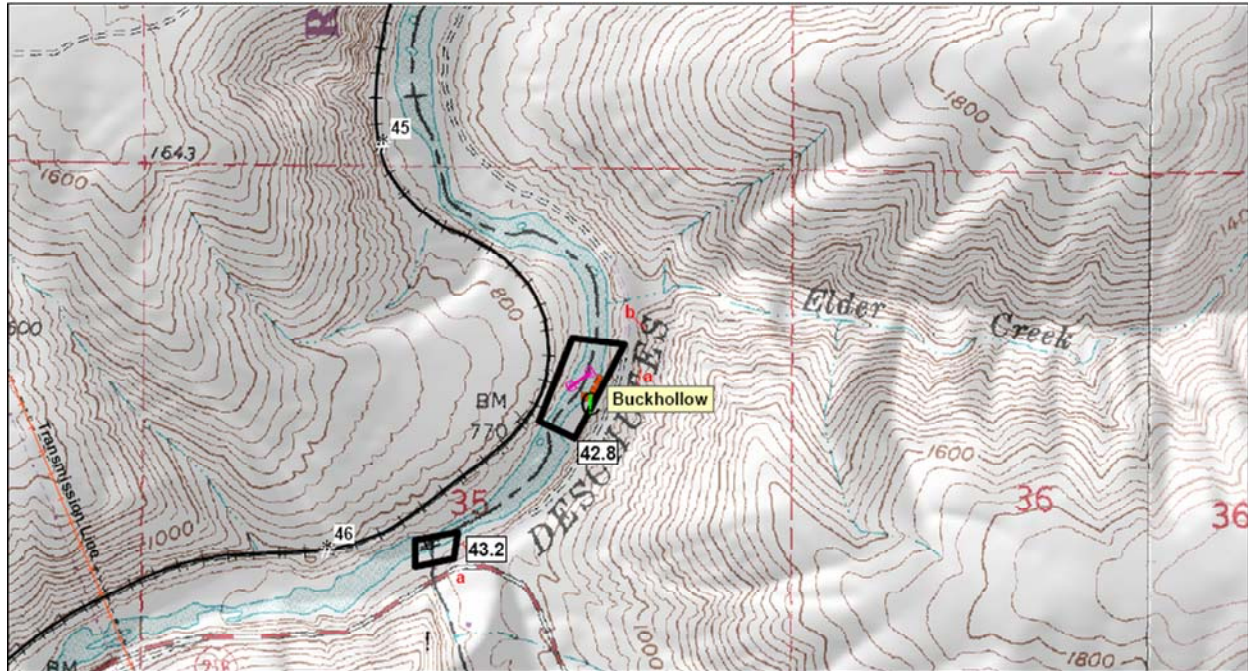
Proposed Booming and Collection Strategies
Lower Deschutes River Geographic Response Plan



Strategy Number	Response Strategy	Number of Booms and Length of Each	Strategy Implementation	Staging Area	Site Access	Resources Protected	Comments	Status	Lat/Long (NAD27)
RM 39.3	Collection	(11) 50'	Use 11 sections of 50' collection boom off of east bank	Pine Tree	East bank dirt road, approximately 3.0 miles north from Hwy. 216	Downstream habitat, salmon spawning beds (see Table 6-1 for seasonal fish presence)	RR milepost 43.0	Unverified	-121.01695, 45.29920



MP 45 – MP 46 – Sector 3 – see next page for GRP description



[Link to specific strategy information](#)

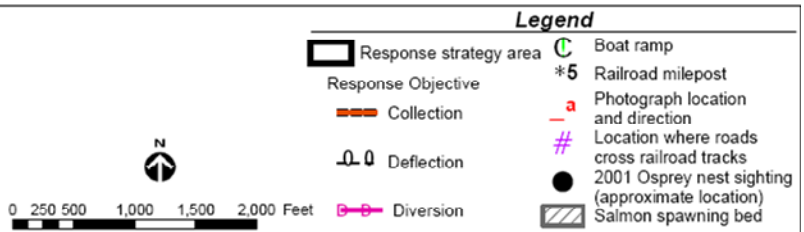
[Link to previous strategy](#)

[Link to next strategy](#)

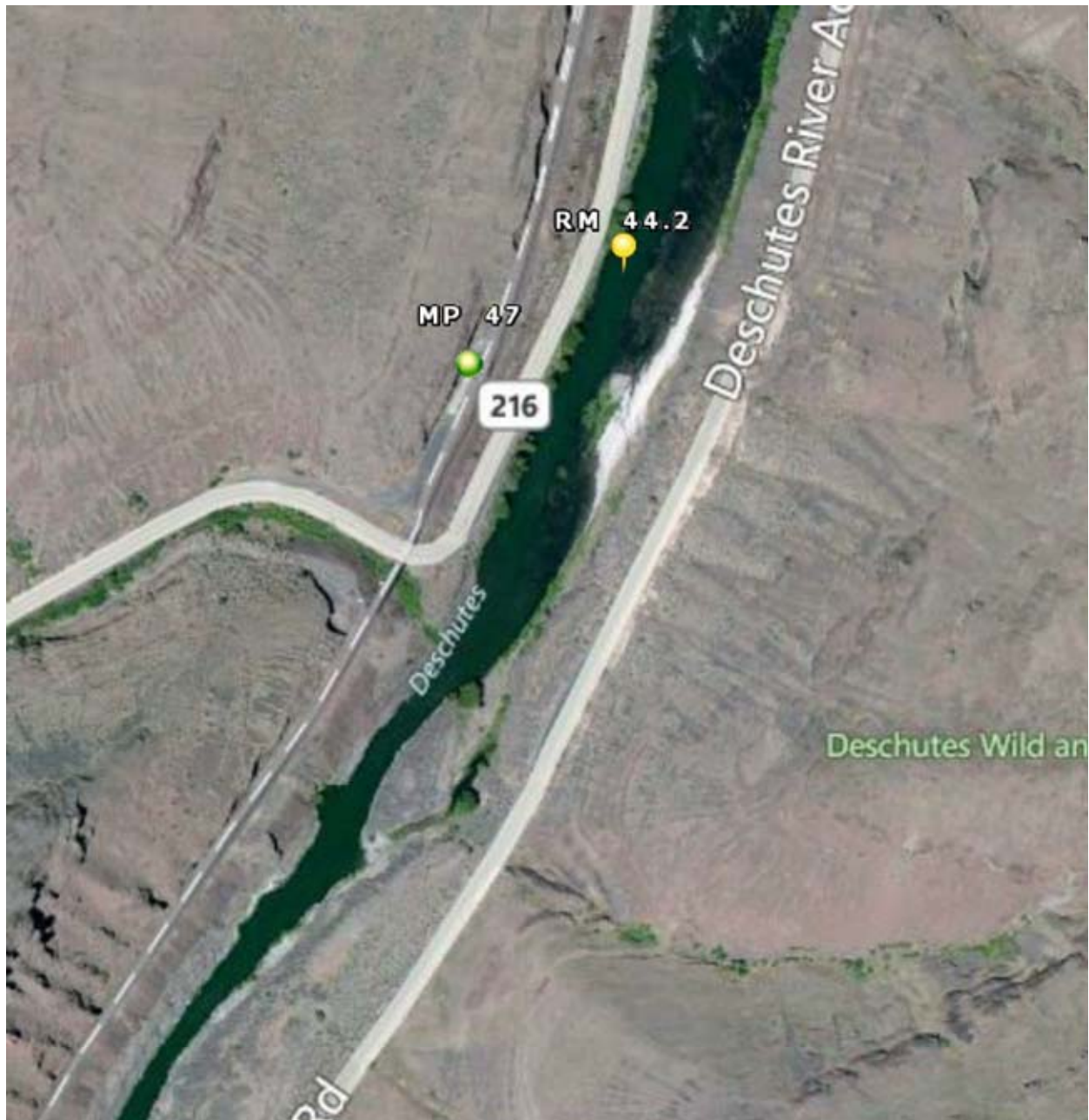
[Link to overview map](#)

Strategies 42.8 and 43.2

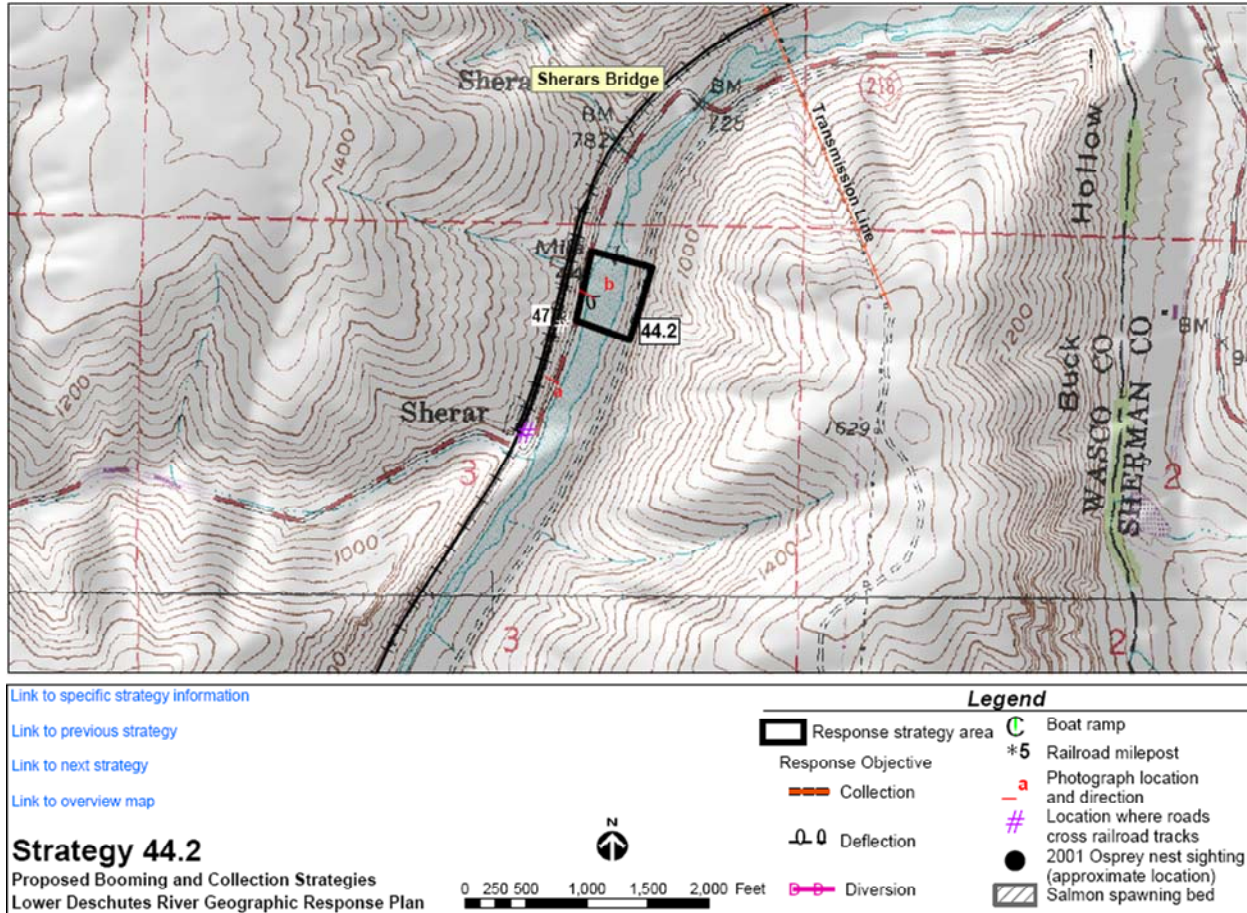
Proposed Booming and Collection Strategies
Lower Deschutes River Geographic Response Plan



Strategy Number	Response Strategy	Number of Booms and Length of Each	Strategy Implementation	Staging Area	Site Access	Resources Protected	Comments	Status	Lat/Long (NAD27)
RM 42.8	Collection	(8) 50'	Use 5 sections (50') of short skirt boom to deflect oil to east side; use 3 sections (50') of short skirt boom to collect oil at shore	Buck Hollow	East bank of river, dirt road approximately 0.4 miles north from Hwy. 216 to Buck Hollow	Downstream habitat	RR milepost 45.6 Osprey nest nearby	Unverified	-121.01810, 45.26777
RM 43.2	Deflection	(1) 200'	Use 1 section (200') to send oil into main channel and protect Buck Hollow Creek	Buck Hollow	Hwy. 216 on east bank near Sherars Bridge	Buck Hollow Creek	RR milepost 45.8 Osprey nest nearby	Unverified	-121.02260, 45.26407



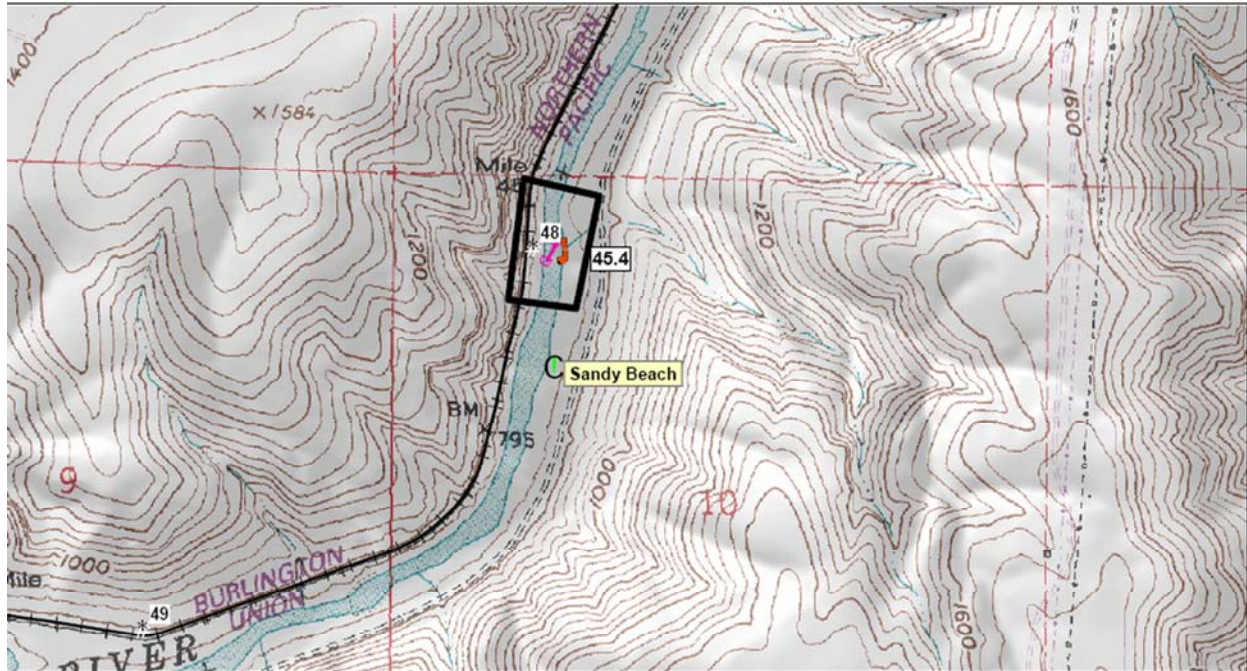
MP 46 – MP 47 – Sector 3 – see next page for GRP description



Strategy Number	Response Strategy	Number of Booms and Length of Each	Strategy Implementation	Staging Area	Site Access	Resources Protected	Comments	Status	Lat/Long (NAD27)
RM 44.2	Deflection	(1) 100'	Use 1 section (100') to send oil into main channel and protect ODFW fish ladder	Sherars Bridge	Hwy. 216 on west bank	ODFW fish ladder	RR milepost 47.0 Road to rail access Osprey nest nearby	Unverified	-121.03793, 45.25669



MP 47 – MP 48 – Sector 3 – see next page for GRP description



[Link to specific strategy information](#)

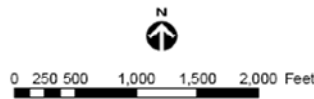
[Link to previous strategy](#)

[Link to next strategy](#)

[Link to overview map](#)

Strategy 45.4

Proposed Booming and Collection Strategies
Lower Deschutes River Geographic Response Plan



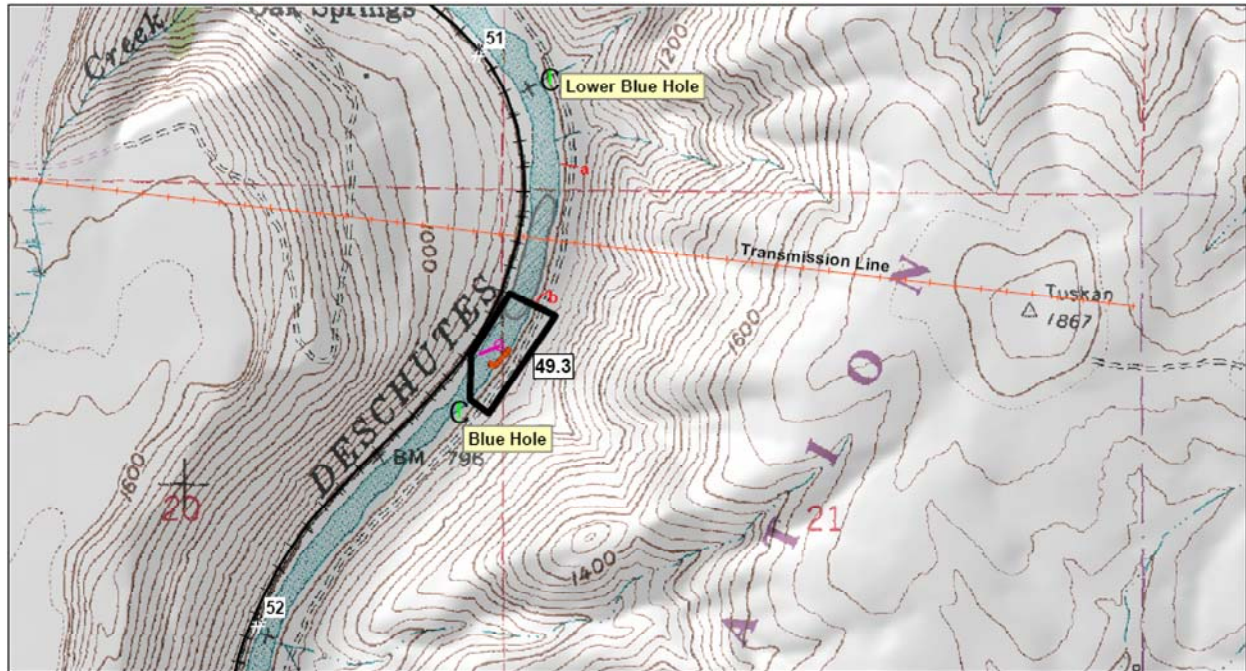
Legend

- Response strategy area
- Response Objective
- Collection
- Deflection
- Diversion
- C Boat ramp
- *5 Railroad milepost
- a Photograph location and direction
- # Location where roads cross railroad tracks
- 2001 Osprey nest sighting (approximate location)
- Salmon spawning bed

Strategy Number	Response Strategy	Number of Booms and Length of Each	Strategy Implementation	Staging Area	Site Access	Resources Protected	Comments	Status	Lat/Long (NAD27)
RM 45.4	Collection	(10) 50'	Use 10 sections (50') of collection boom off of east bank	Sandy Beach	East bank of river, dirt road approximately 1.1 miles south from Hwy. 216	Downstream habitat	RR milepost 48.0	Unverified	-121.04781, 45.24214

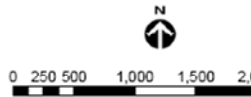


MP 51 – MP 52 – Sector 3 – see next page for GRP description


[Link to specific strategy information](#)
[Link to previous strategy](#)
[Link to next strategy](#)
[Link to overview map](#)

Strategy 49.3

Proposed Booming and Collection Strategies
Lower Deschutes River Geographic Response Plan



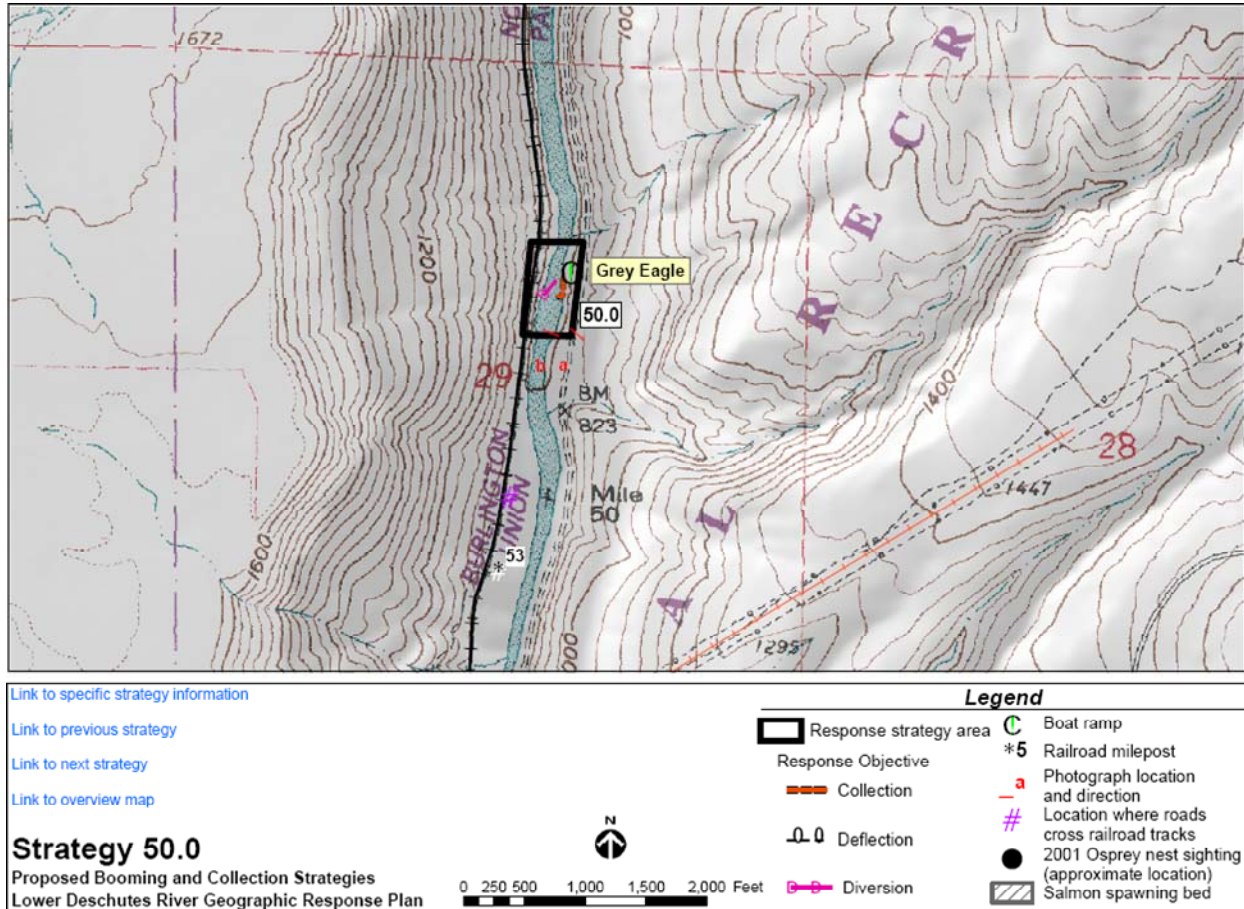
Legend

- Response strategy area
- Response Objective
- Collection
- Deflection
- Diversion
- C Boat ramp
- *5 Railroad milepost
- a Photograph location and direction
- # Location where roads cross railroad tracks
- 2001 Osprey nest sighting (approximate location)
- Salmon spawning bed

Strategy Number	Response Strategy	Number of Booms and Length of Each	Strategy Implementation	Staging Area	Site Access	Resources Protected	Comments	Status	Lat/Long (NAD27)
RM 49.3	Collection	(9) 50'	Use 9 sections (500') of collection boom off of east bank	Blue Hole	East bank of river, dirt road north from Maupin approximately 3.0 miles to Blue Hole	Downstream habitat, salmon spawning beds (see Table 6-1 for seasonal fish presence)	RR milepost 51.4	Unverified	-121.07317, 45.21135



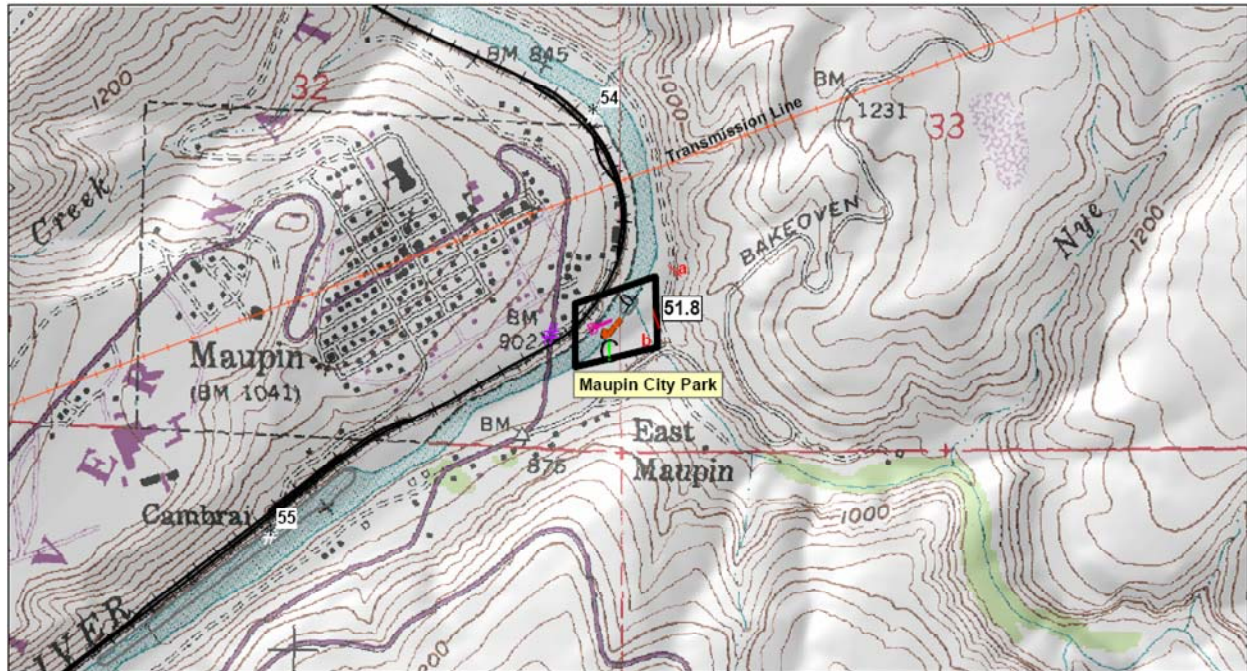
MP 52 – MP 53 – Sector 3 – see next page for GRP description



Strategy Number	Response Strategy	Number of Booms and Length of Each	Strategy Implementation	Staging Area	Site Access	Resources Protected	Comments	Status	Lat/Long (NAD27)
RM 50.0	Collection	(9) 50'	Use 9 sections (50') of collection boom off of east bank	Grey Eagle	East bank of river, dirt road north from Maupin approximately 1.8 miles to Grey Eagle	Downstream habitat	RR milepost 52.6	Unverified	-121.08120, 45.19549

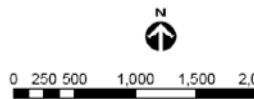


MP 54 – MP 55 – Sector 3 – see next page for GRP description


[Link to specific strategy information](#)
[Link to previous strategy](#)
[Link to next strategy](#)
[Link to overview map](#)

Strategy 51.8

Proposed Booming and Collection Strategies
Lower Deschutes River Geographic Response Plan



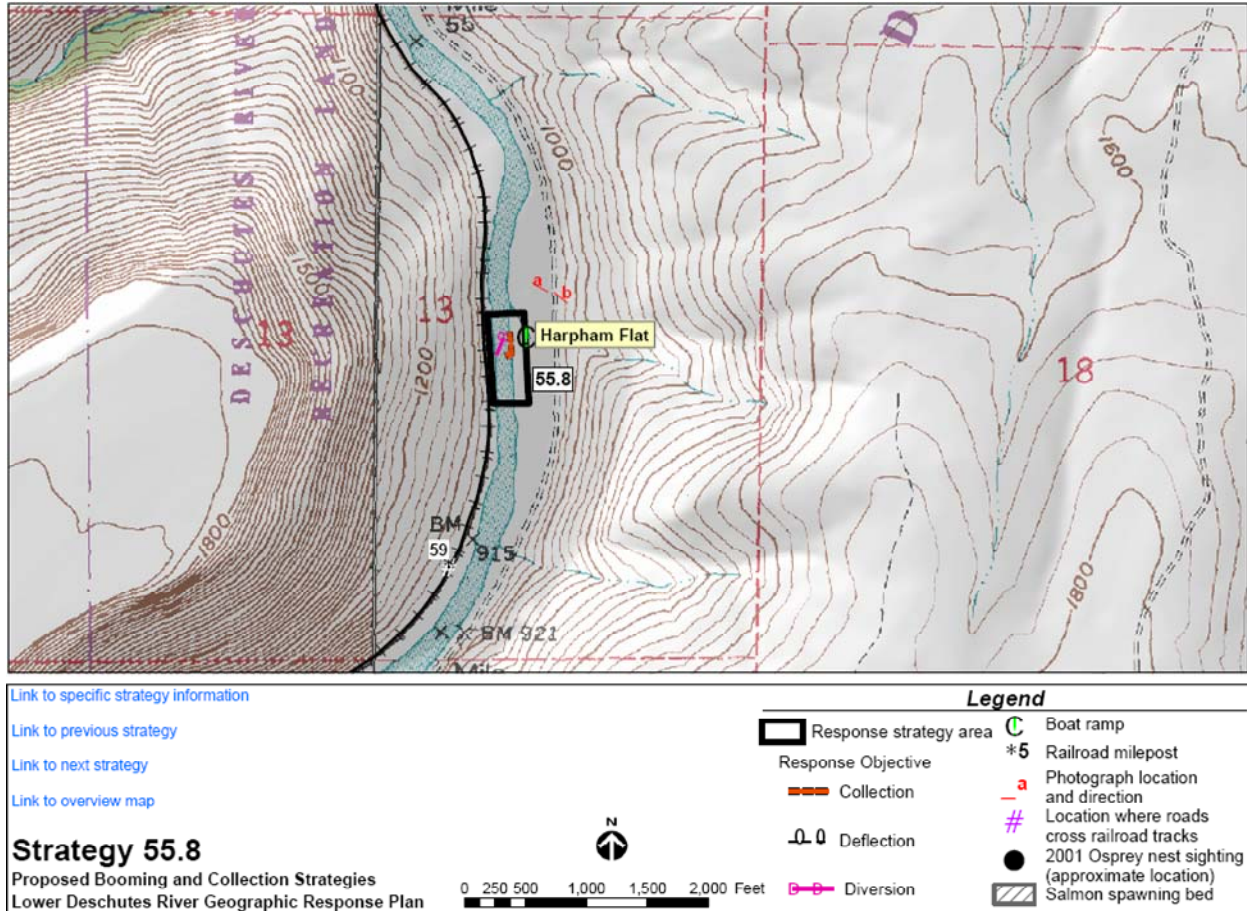
Legend

- Response strategy area
- Response Objective
- Collection
- Deflection
- Diversion
- C Boat ramp
- *5 Railroad milepost
- a Photograph location and direction
- # Location where roads cross railroad tracks
- 2001 Osprey nest sighting (approximate location)
- Salmon spawning bed

Strategy Number	Response Strategy	Number of Booms and Length of Each	Strategy Implementation	Staging Area	Site Access	Resources Protected	Comments	Status	Lat/Long (NAD27)
RM 51.8	Collection / Deflection	(10) 50' (1) 200'	Use 10 sections (50') of collection boom off of east bank. Use 1 section (200') to send oil into main channel and protect Bakeoven Creek	Maupin City Park	Maupin City Park on east bank of river	Bakeoven Creek / downstream habitat, salmon spawning beds (see Table 6-1 for seasonal fish presence)	RR milepost 54.4 Road to rail access, helicopter access. This strategy is the second priority to be fulfilled if an accident happens upstream of Maupin.	Unverified	-121.07318, 45.17395



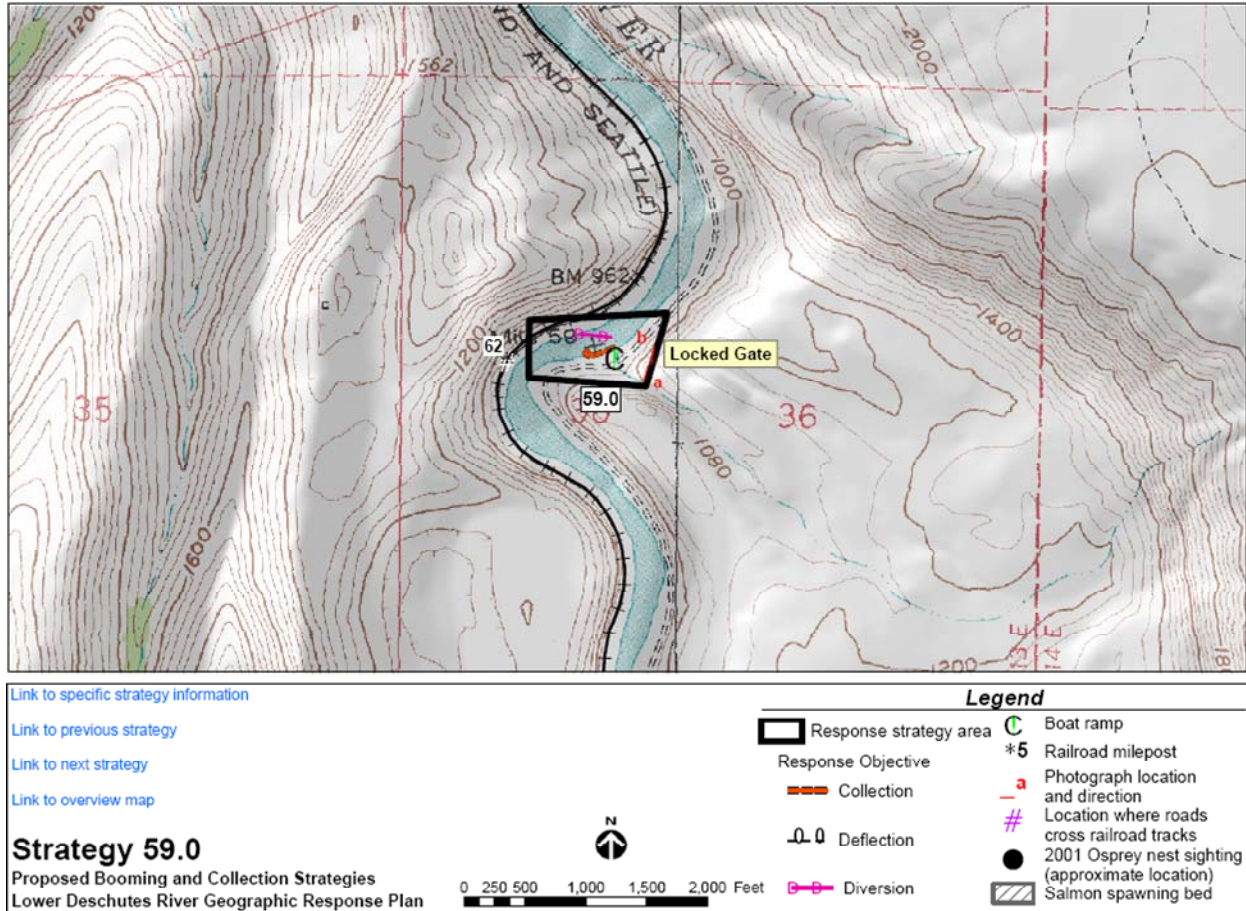
MP 58 – MP 59 – Sector 3 – see next page for GRP description



Strategy Number	Response Strategy	Number of Booms and Length of Each	Strategy Implementation	Staging Area	Site Access	Resources Protected	Comments	Status	Lat/Long (NAD27)
RM 55.8	Collection	(9) 50'	Use 9 sections (50') of collection boom off of east bank	Harpham Flat Camp	East bank of river, dirt road south from Maupin approximately 3.7 miles to Harpham Flat	Downstream habitat	RR milepost 58.7	Unverified	-121.12082, 45.13571



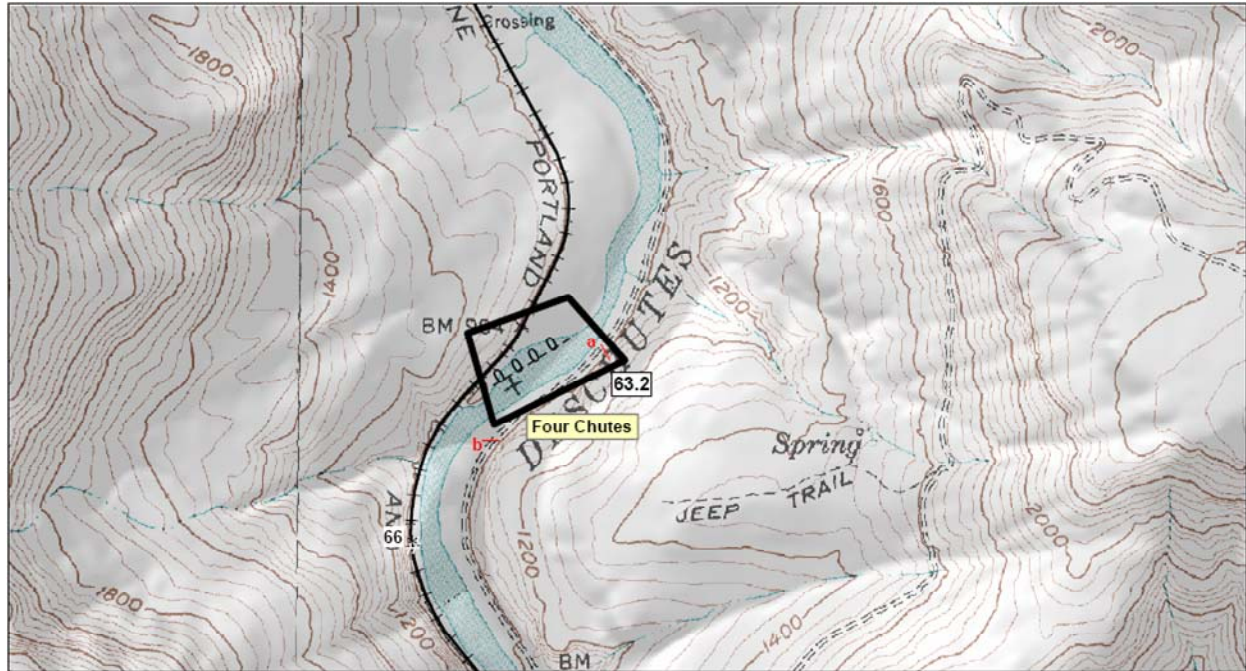
MP 61- MP 62 – Sector 3 – see next page for GRP description



Strategy Number	Response Strategy	Number of Booms and Length of Each	Strategy Implementation	Staging Area	Site Access	Resources Protected	Comments	Status	Lat/Long (NAD27)
RM 59.0	Collection	(12) 50'	Use 12 sections (50') of collection boom off of east bank	Nena	East bank of river, dirt road south from Maupin approximately 7.1 miles to locked gate (contact BLM to obtain gate access)	Downstream habitat	RR milepost 62.0	Unverified	-121.12757, 45.09333

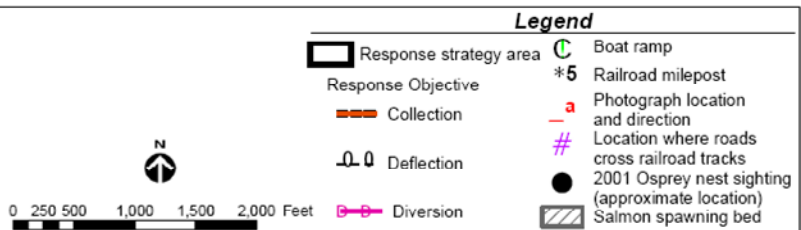


MP 65 – MP 66 – Sector 4 – see next page for GRP description


[Link to specific strategy information](#)
[Link to previous strategy](#)
[Link to next strategy](#)
[Link to overview map](#)

Strategy 63.2

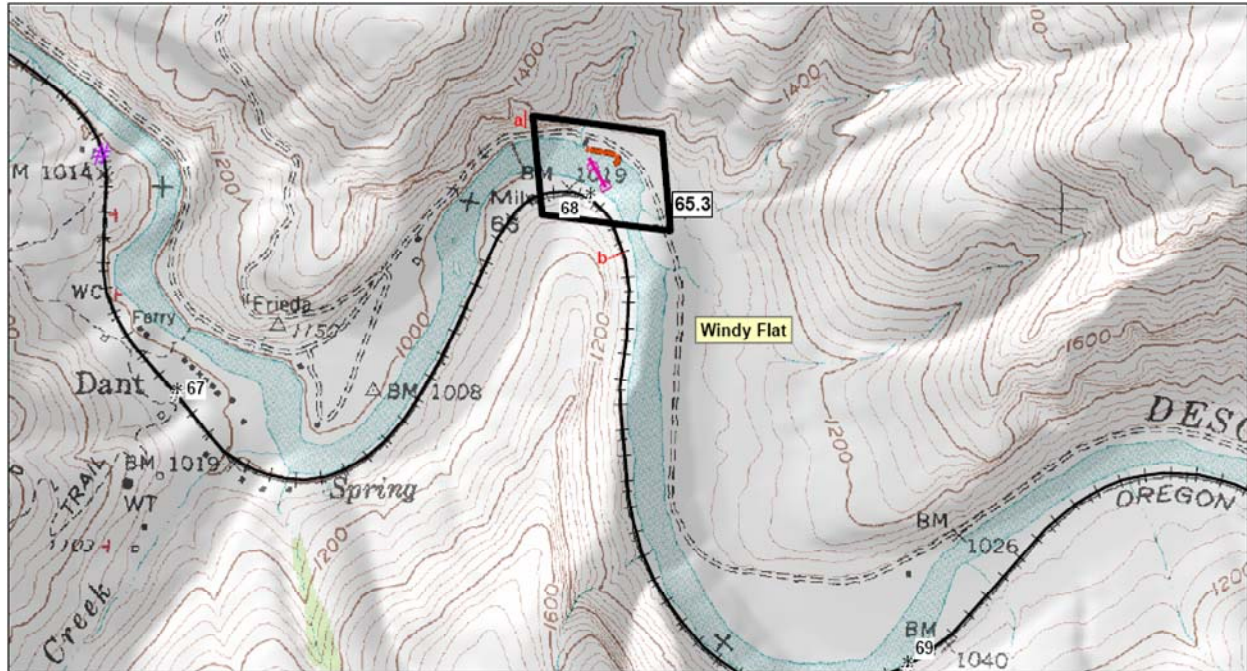
Proposed Booming and Collection Strategies
Lower Deschutes River Geographic Response Plan



Strategy Number	Response Strategy	Number of Booms and Length of Each	Strategy Implementation	Staging Area	Site Access	Resources Protected	Comments	Status	Lat/Long (NAD27)
RM 63.2	Deflection	(13) 50'	Use 13 sections (50') to send oil into main channel and protect west bank habitat	Four Chutes	East bank of river, dirt road south from Maupin approximately 11.0 miles past Deschutes Club	West bank habitat	RR milepost 65.7	Unverified	-121.11747, 45.05366

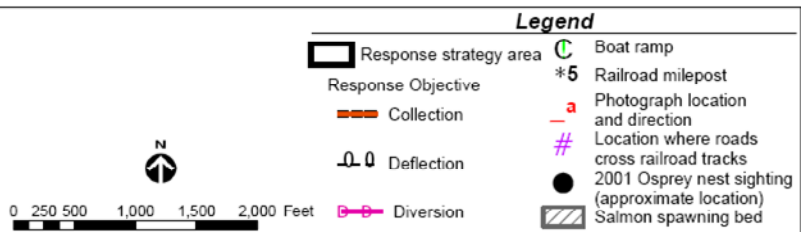


MP 67 – MP 68 – Sector 4 – see next page for GRP description


[Link to specific strategy information](#)
[Link to previous strategy](#)
[Link to next strategy](#)
[Link to overview map](#)

Strategy 65.3

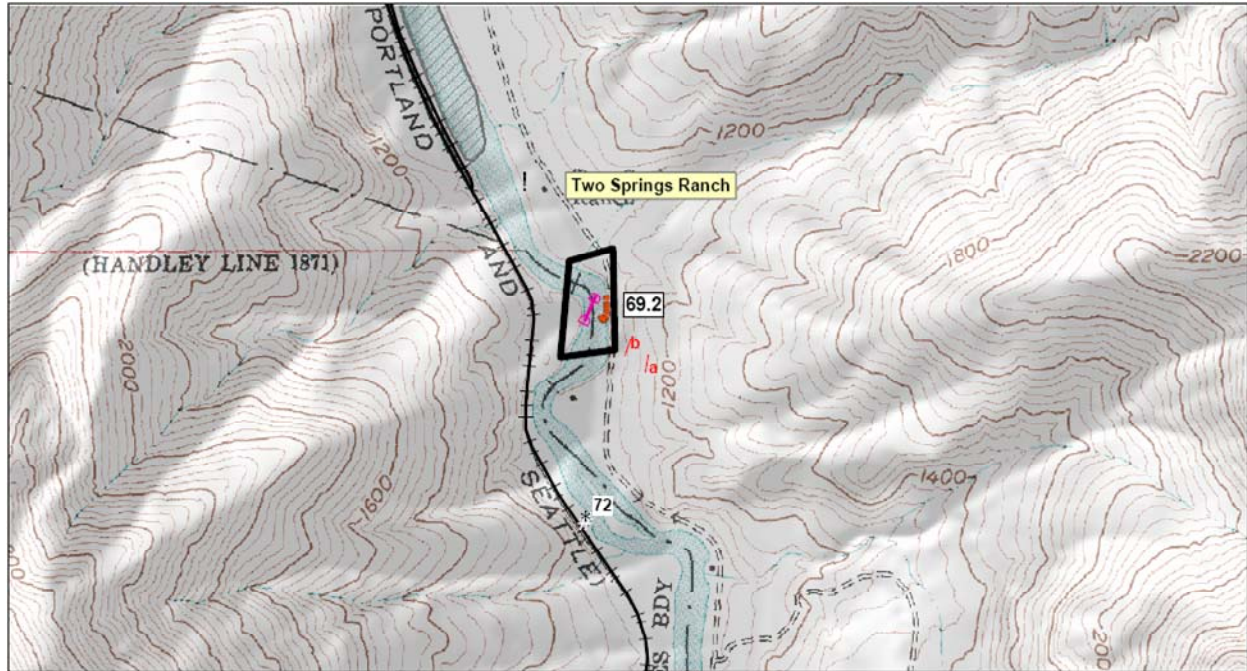
Proposed Booming and Collection Strategies
Lower Deschutes River Geographic Response Plan



Strategy Number	Response Strategy	Number of Booms and Length of Each	Strategy Implementation	Staging Area	Site Access	Resources Protected	Comments	Status	Lat/Long (NAD27)
RM 65.3	Collection	(10) 50'	Use 10 sections (50') of collection boom off of east bank	Windy Flat	East bank of river, dirt road south from Maupin approximately 13.0 miles past Deschutes Club	Downstream habitat	RR milepost 68.0	Unverified	-121.09782, 45.04234

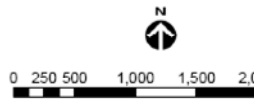


MP 71 – MP 72 – Sector 4 – see next page for GRP description


[Link to specific strategy information](#)
[Link to previous strategy](#)
[Link to next strategy](#)
[Link to overview map](#)

Strategy 69.2

Proposed Booming and Collection Strategies
Lower Deschutes River Geographic Response Plan



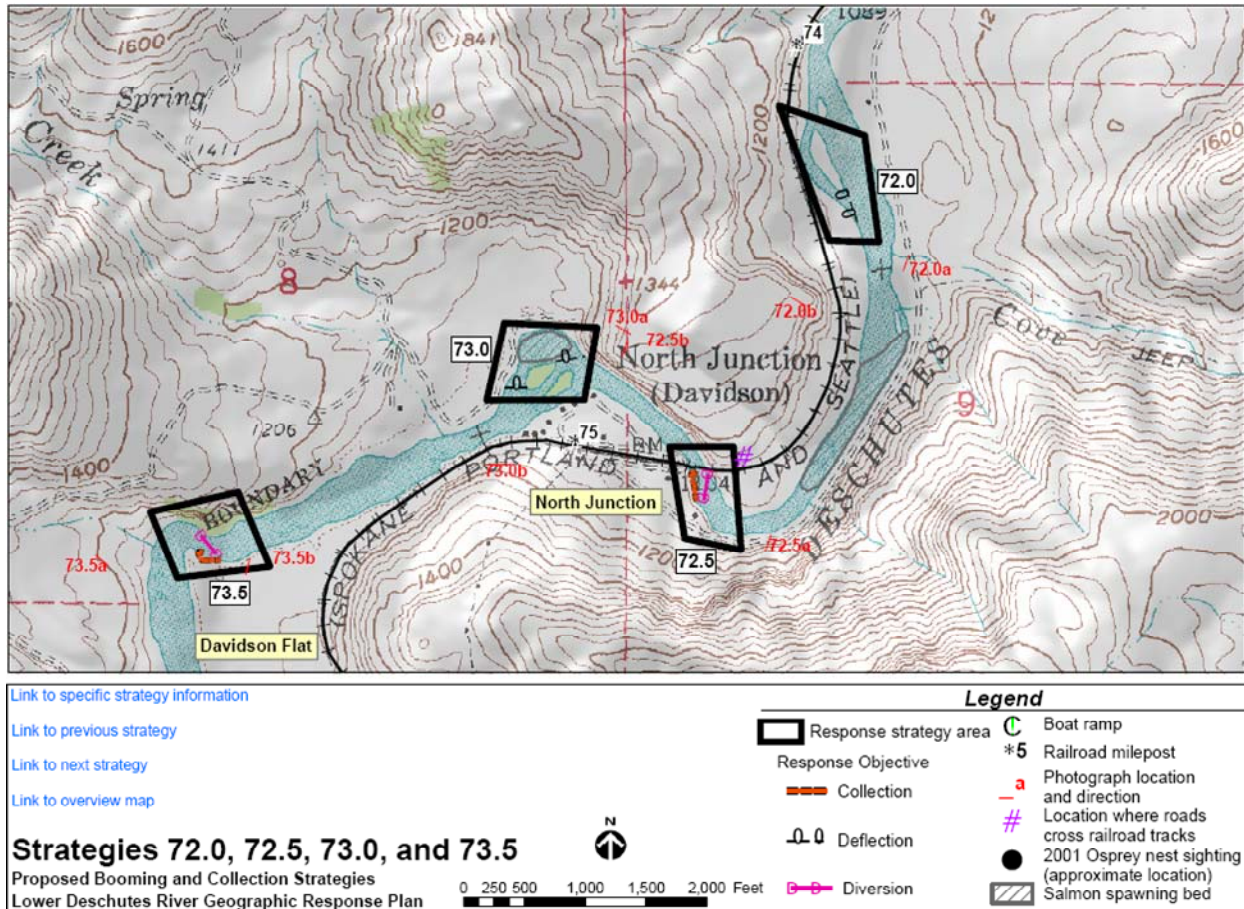
Legend

- Response strategy area
- Response Objective
- Collection
- Deflection
- Diversion
- C Boat ramp
- *5 Railroad milepost
- a Photograph location and direction
- # Location where roads cross railroad tracks
- 2001 Osprey nest sighting (approximate location)
- Salmon spawning bed

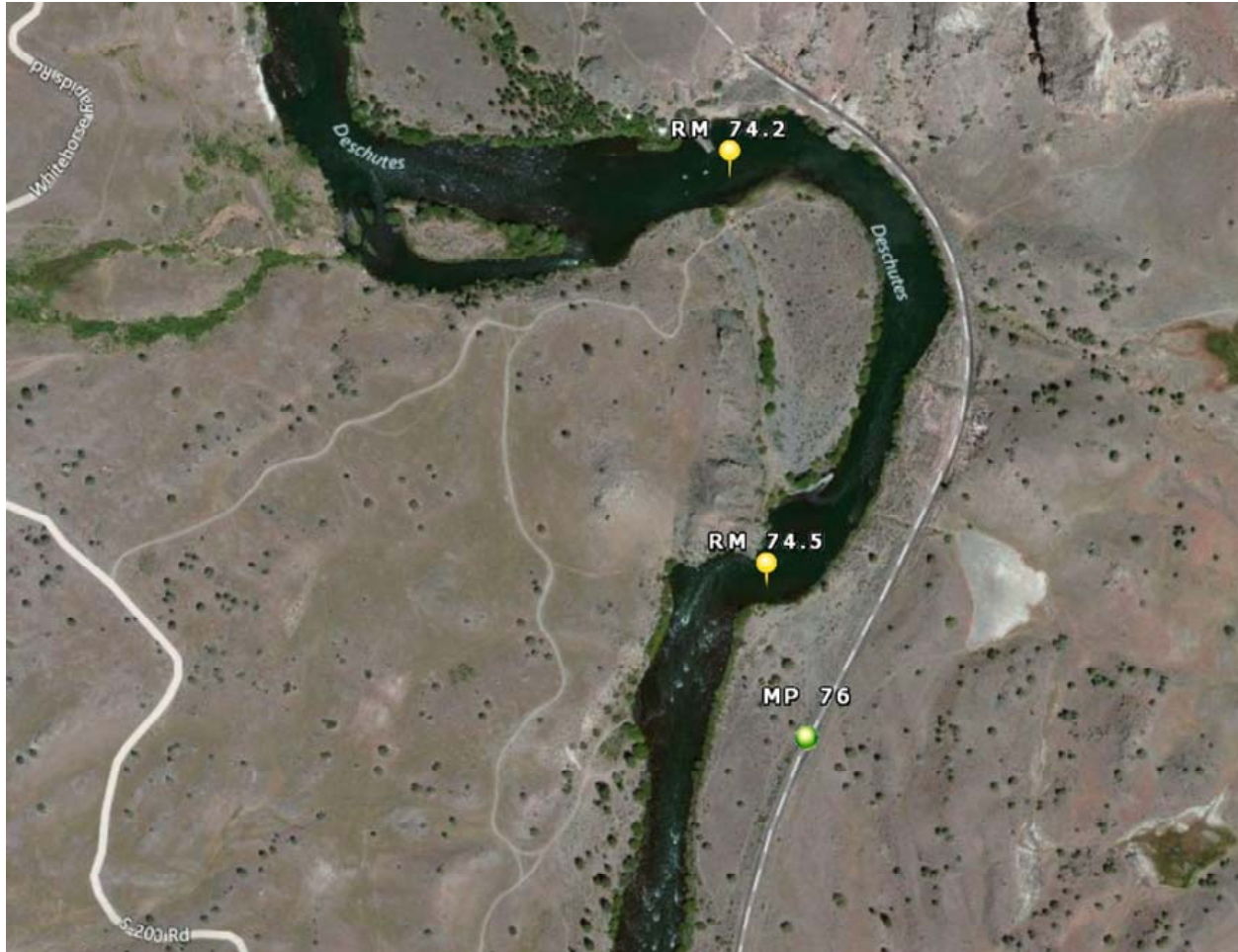
Strategy Number	Response Strategy	Number of Booms and Length of Each	Strategy Implementation	Staging Area	Site Access	Resources Protected	Comments	Status	Lat/Long (NAD27)
RM 69.2	Collection	(10) 50'	Use 10 sections (50') of collection boom off of east bank	Two Springs Ranch	East bank of river, dirt road south from Maupin approximately 16.7 miles to Two Springs Ranch	Downstream habitat, salmon spawning beds (see Table 6-1 for seasonal fish presence)	RR milepost 71.8 Osprey nest nearby Contact USFWS before implementing this strategy.	Unverified	-121.05445, 45.01422



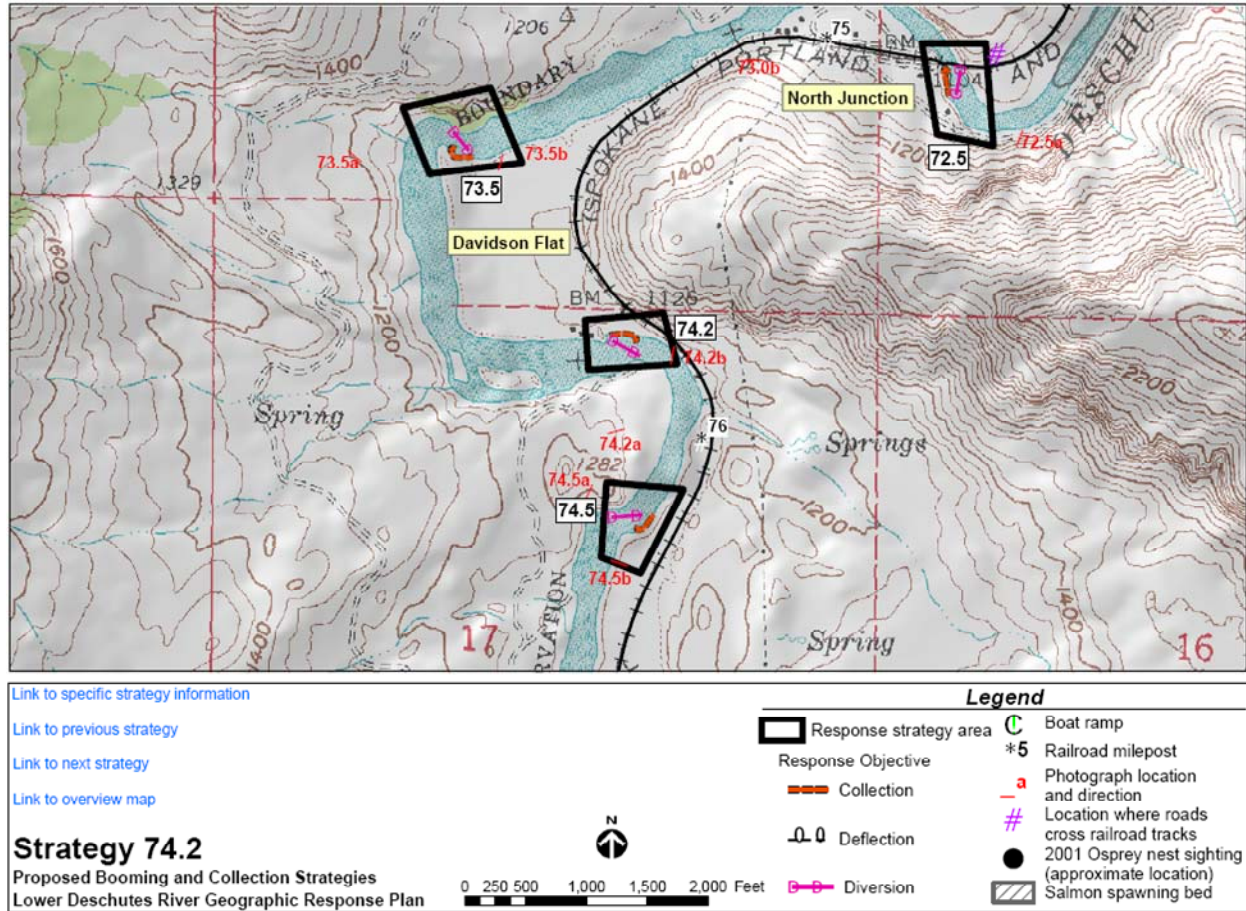
MP 74 – MP 76 – Sector 4 – see next page for GRP description



Strategy Number	Response Strategy	Number of Booms and Length of Each	Strategy Implementation	Staging Area	Site Access	Resources Protected	Comments	Status	Lat/Long (NAD27)
RM 72.0	Deflection	(1) 300'	Use 1 section (300') to send oil into main channel and protect island back channels	North Junction	East bank of river, dirt road south from Maupin approximately 19.3 miles to North Junction	West bank river channel	RR milepost 74.3 Outhouse facility available at RM 72.5 Notify USFWS before implementing this strategy.	Unverified	-121.06364, 44.98079
RM 72.5	Collection	(10) 50'	Use 10 sections (50') of collection boom off of east bank	North Junction	East bank of river, dirt road south from Maupin approximately 20.0 miles to North Junction	Downstream habitat, salmon spawning beds (see Table 6-1 for seasonal fish presence)	RR milepost 74.8 Outhouse facility available at RM 72.5 Notify USFWS before implementing this strategy.	Unverified	-121.06760, 44.97365
RM 73.0	Deflection	(2) 200'	Use sections to send oil into main channel and protect west bank of island back channel	North Junction	East bank of river, dirt road south from Maupin approximately 20.3 miles to North Junction	Fish habitat west of islands, salmon spawning beds (see Table 6-1 for seasonal fish presence)	RR milepost 75.1 Outhouse facility available at RM 72.5 Notify USFWS before implementing this strategy.	Unverified	-121.07285, 44.97657
RM 73.5	Collection	(10) 50'	Use 10 sections (50') of collection boom off of east bank	Davidson Flat	East bank of river, dirt road south from Maupin or hi-rail approximately 20.3 miles on railroad tracks	Downstream habitat, salmon spawning beds (see Table 6-1 for seasonal fish presence)	RR milepost 75.6 Outhouse facility available at RM 72.5 Notify USFWS before implementing this strategy.	Unverified	-121.08329, 44.97262



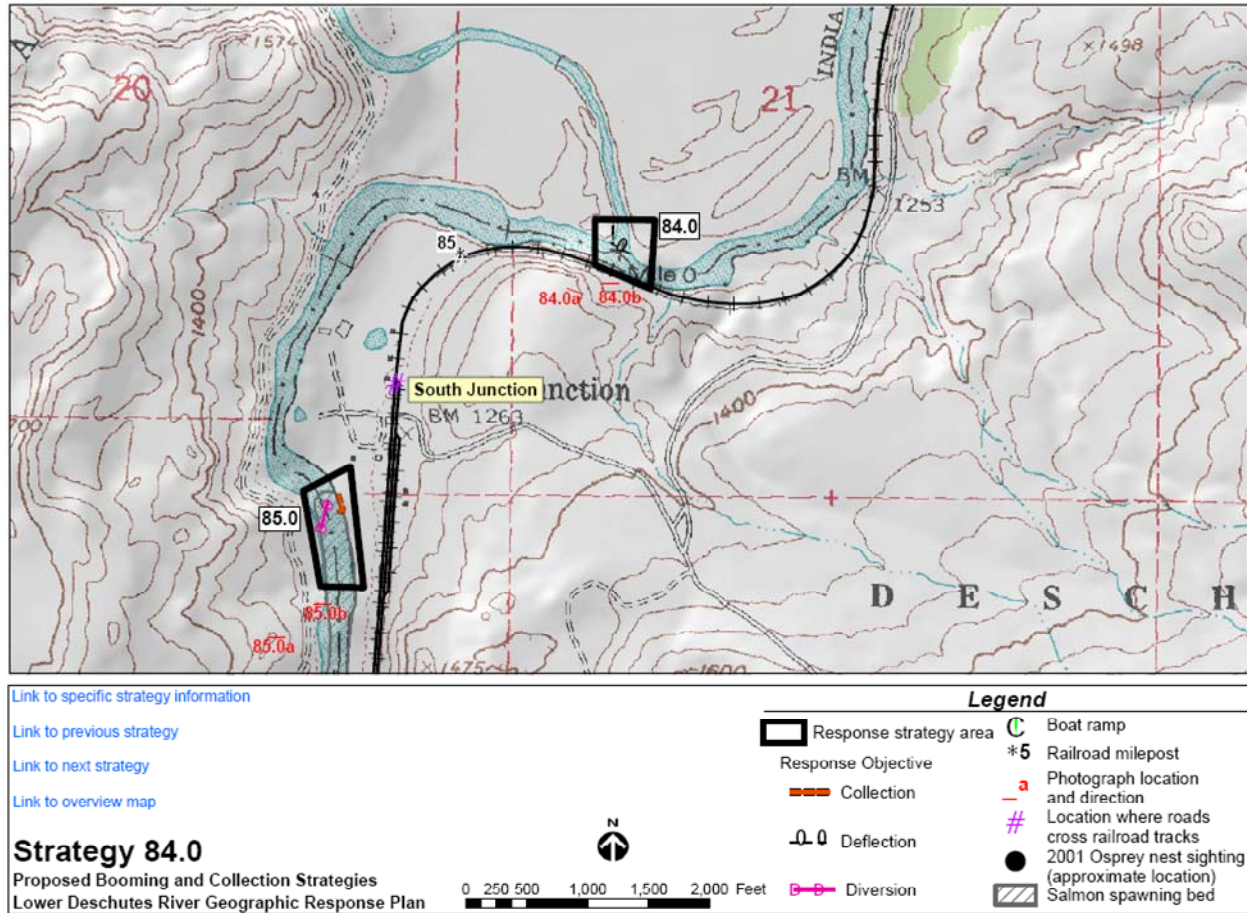
MP 75 – MP 76 – Sector 4 – see next page for GRP description



Strategy Number	Response Strategy	Number of Booms and Length of Each	Strategy Implementation	Staging Area	Site Access	Resources Protected	Comments	Status	Lat/Long (NAD27)
RM 74.2	Collection	(11) 50'	Use 11 sections (50') of collection boom off of east bank	Davidson Flat	East bank of river, dirt road south from Maupin approximately 20.3 miles or hi-rail on railroad tracks	Downstream habitat	RR milepost 75.8 Outhouse facility available at RM 72.5	Unverified	-121.07799, 44.96796
RM 74.5	Collection	(10) 50'	Use 10 sections (50') of collection boom off of east bank	Davidson Flat	Hi-rail on railroad tracks from Maupin	Downstream habitat	RR milepost 76.1	Unverified	-121.07775, 44.96394



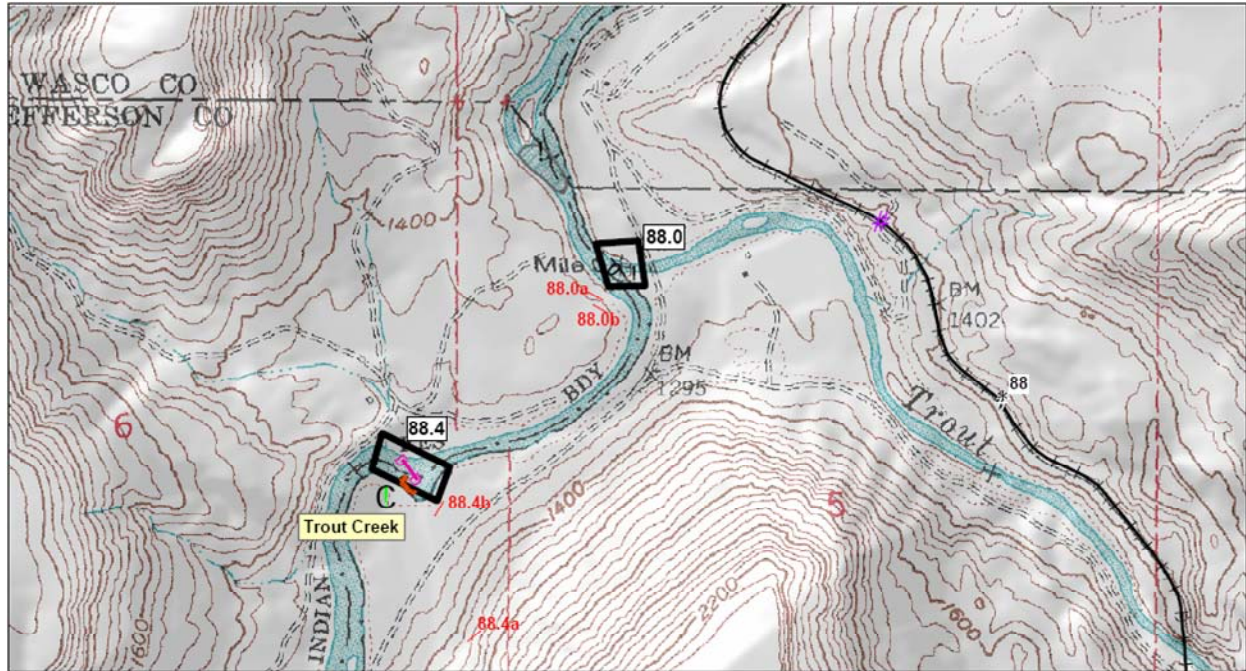
MP 84 – MP 86 – Sector 5 – see next page for GRP description



Strategy Number	Response Strategy	Number of Booms and Length of Each	Strategy Implementation	Staging Area	Site Access	Resources Protected	Comments	Status	Lat/Long (NAD27)
RM 84.0	Deflection	(1) 200'	Use 1 section (200') to send oil into main channel and protect Warm Springs River	South Junction Camp	South Junction Road west from Shaniko Junction to South Junction	Warm Springs River	RR milepost 84.8 Boat access only Osprey nest nearby Strategy not necessary if Warm Springs River has sufficient flow to prevent product from traveling upstream. Notify USFWS before implementing this strategy.	Unverified	-121.06670, 44.85812
RM 85.0	Collection	(9) 50'	Use 9 sections (50') of collection boom off of east bank	South Junction Camp	South Junction Road west from Shaniko Junction to South Junction	Downstream habitat, salmon spawning beds (see Table 6-1 for seasonal fish presence)	RR milepost 85.4 Osprey nest nearby Notify USFWS before implementing this strategy.	Unverified	-121.07578, 44.85176



MP 87 – MP 89 – Sector 5 – see next page for GRP description



[Link to specific strategy information](#)

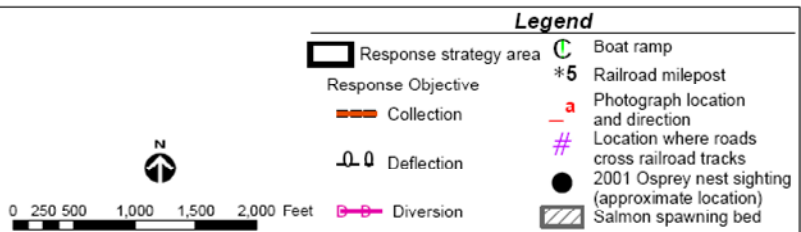
[Link to previous strategy](#)

[Link to next strategy](#)

[Link to overview map](#)

Strategy 88.0

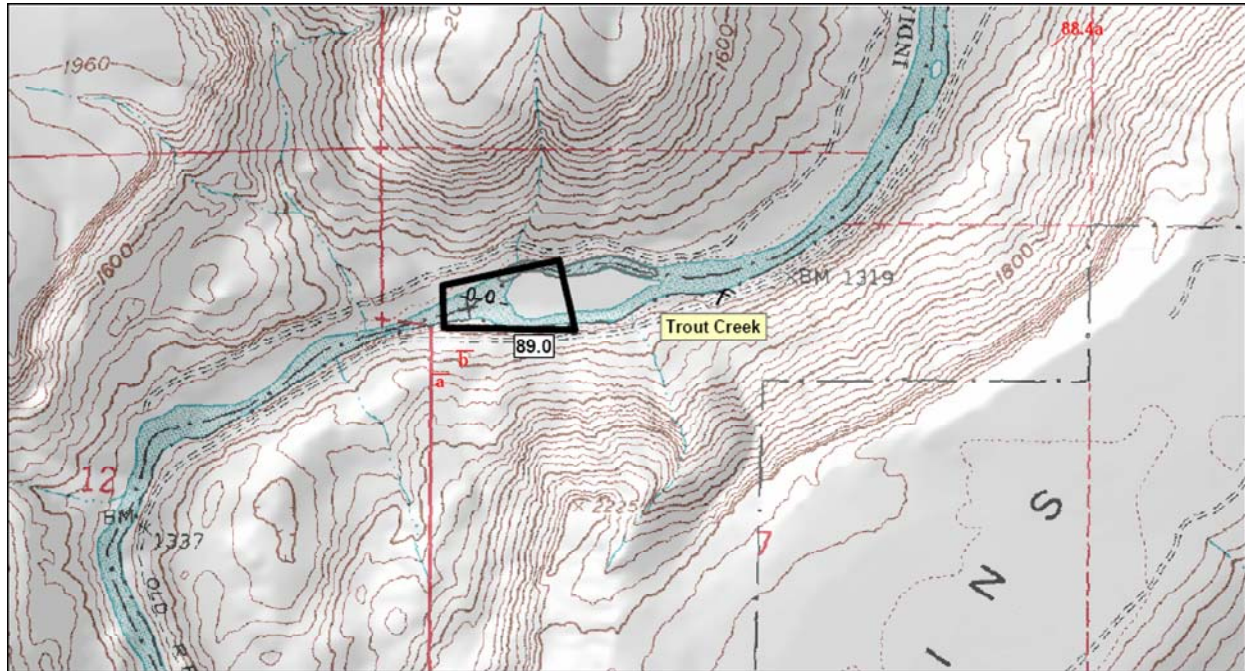
Proposed Booming and Collection Strategies
Lower Deschutes River Geographic Response Plan



Strategy Number	Response Strategy	Number of Booms and Length of Each	Strategy Implementation	Staging Area	Site Access	Resources Protected	Comments	Status	Lat/Long (NAD27)
RM 88.0	Deflection	(1) 200'	Use 1 section (200') to send oil into main channel and protect Trout Creek	Trout Creek Camp	NE Coleman Road west along Trout Creek from Hwy. 97 to Trout Creek Camp	Trout Creek, steelhead (see Table 6-1 for seasonal fish presence)	RR milepost 87.5 Osprey nests nearby Notify USFWS before implementing this strategy.	Unverified	-121.08716, 44.82162
RM 88.4	Collection	(9) 50'	Use 9 sections (50') of collection boom off of east bank	Trout Creek Camp	East bank of river dirt road south from Trout Creek approximately 0.5 miles	Downstream habitat	Osprey nests nearby	Unverified	



MP 89 – MP 90 Sector 5 – see next page for GRP description



[Link to specific strategy information](#)

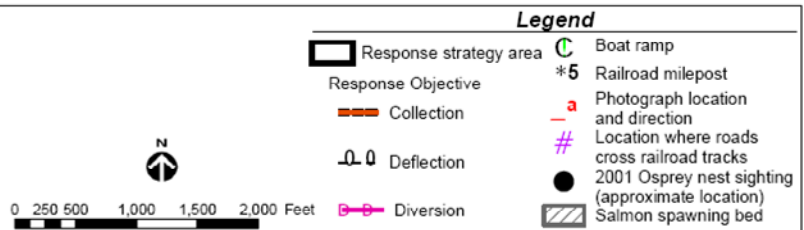
[Link to previous strategy](#)

[Link to next strategy](#)

[Link to overview map](#)

Strategy 89.0

Proposed Booming and Collection Strategies
Lower Deschutes River Geographic Response Plan



Strategy Number	Response Strategy	Number of Booms and Length of Each	Strategy Implementation	Staging Area	Site Access	Resources Protected	Comments	Status	Lat/Long (NAD27)
RM 89.0	Deflection	(1) 400'	Use 1 section (400') to send oil into main channel and protect west island back channel	Trout Creek Camp	East bank of river, dirt road south from Trout Creek approximately 1.7 miles	Steelhead spawning (see Table 6-1 for seasonal fish presence)		Unverified	121.10885, 44.80737

